



INFOCADO WEEKLY REPORT

24th to 30th November 2007 (Wk 48)

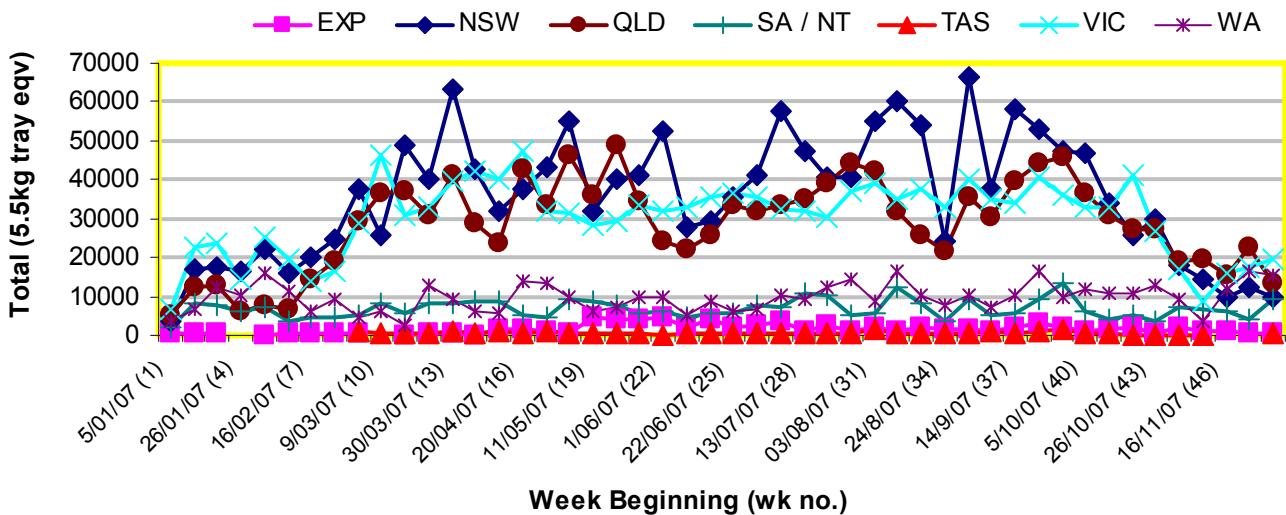
Green shading indicates dispatch data

Yellow shading indicates forecast data

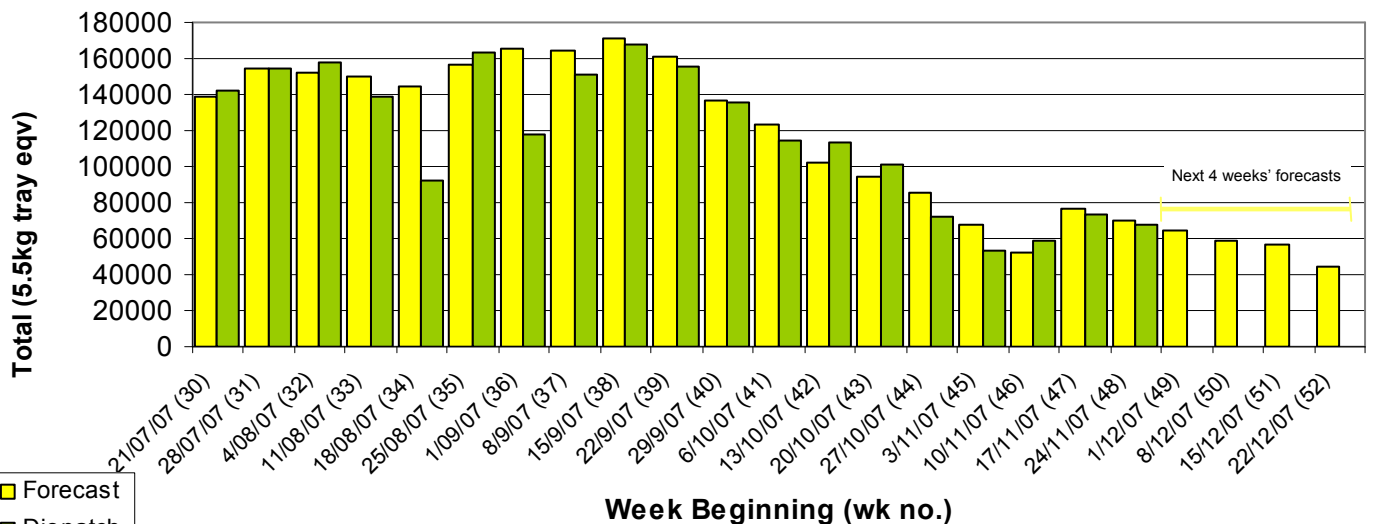
Industry Dispatches 24th to 30th November (Wk 48)

Dest. State	5.5kg	5.5kg	5.5kg	5.5kg	5.5kg	5.5kg	5.5kg	5.5kg	5.5kg	5.5kg	Bulk	P/PK	Other	5.5Kg Eqv Trays All
	<16	16	18	20	22	23	25	28	28+	Total	10Kg	Kg	Kg	Total
EXP								382	111	493	51			586
NSW	175	253	1,076	1,447	68	986	499	1,269	24	5,797	2,322			10,019
QLD	182	187	826	492	2,054	969	2,845	1,474	14	9,043	1,834	3,927	650	13,210
SA / NT		44	557	2,972	57	1,087	1,018	949		6,684	1,379			9,191
TAS						120	159	81		360				360
VIC	213	535	1,803	2,881	139	3,061	2,923	2,626	85	14,266	2,953			19,635
WA		224	614	1,485		4,223	2,769	1,670		10,985	2,204	1,500		15,265
Total	570	1,243	4,876	9,277	2,318	10,446	10,213	8,451	234	47,628	10,743	5,427	650	68,266

Throughput Australian avocados by destination State Throughput 1st January 2007 to date = 5,436,780 5.5kg tray eqv



Dispatch vs weekly forecast for Australian Avocados - all varieties and all packs (21st July to 28th December 2007)



Major Capital City Weather Report – week ahead

City	Tue	Wed	Thu	Fri	Public Hols	School Holidays
Brisbane	30°	31°	30°	31°	December 25-26 Christmas & Boxing Days	15th Dec-28th Jan
Melbourne	23°	23°	32°	25°	December 25-26 Christmas & Boxing Days	22nd Dec-28th Jan
Perth	26°	21°	21°	25°	December 25-26 Christmas & Boxing Days	14th Dec—3rd Feb
Sydney	27°	25°	24°	28°	December 25-26 Christmas & Boxing Days	22nd Dec—28th Jan

Forecast Data (Week 48-51)

Variety	Trays - Total	Bulk	P/Pk	Other	All - Total
	5.5Kg Eqv	10Kg	Kg	Kg	5.5Kg Eqv
Week 48—begin 24/11/07					
Gwen	2,440	270			2,931
Hass	49,070	7,895	6,500	200	64,643
Lamb Hass	1,960	230		100	2,396
Week Total	53,470	8,395	6,500	300	69,971
Week 49—begin 1/12/07					
Gwen	1,404	78			1,546
Hass	43,155	8,647	6,050	200	60,013
Lamb Hass	700	50			791
Reed	1,250	20		300	1,341
Sharwil	500	200			864
Week Total	47,009	8,995	6,050	500	64,555
Week 50—begin 8/12/07					
Gwen	1,640	85			1,795
Hass	39,584	6,201	2,050	200	51,268
Lamb Hass	230	30		100	303
Reed	3,450	360			4,105
Sharwil	500	200			864
Week Total	45,404	6,876	2,050	300	58,334
Week 51— begin 15/12/07					
Gwen	1,830	95			2,003
Hass	39,894	5,582	200		50,079
Reed	3,500	360			4,155
Week Total	45,224	6,037	200	0	56,236
Week 52— begin 22/12/07					
Gwen	1,200	90			1,364
Hass	33,900	4,632	200		42,358
Reed	300	60			409
Week Total	35,400	4,782	200	0	44,131

Dispatch Data (Week 48—begin 24/11/07)

Variety	Trays	Bulk	P/PK	Other	5.5Kg Eqv
	5.5kg eqv	10Kg	Kg	Kg	Total Trays
Gwen	3,238	686	0	0	4,485
Hass	42,750	10,057	5,427	100	62,040
Lamb Hass	92	0	0	100	110
Reed	1,548	0	0	450	1,630
Grand Total	47,628	10,743	5,427	650	68,266

Week 48 contributors

AvoLand
 Avonova
 C F Fechner
 Chinoola Orchards
 Chislett Developments Pty Ltd
 Coastal Avocados
 Delroy Orchards
 Green Nugget Orchards
 Karri ry Produce
 Kulnura Ambrosia Avocados
 Mariners Rest
 Merrinee Farms
 Midcoast Avocados
 Natures Fruit Company
 One Harvest
 RM & KL Cornwall
 Rob Farnsworth Pty Ltd
 Summerland House With No Steps
 Sunfresh
 Sunnyspot Packhouse PL
 Sunrise Avocados
 Tam MT Farm Management
 Vitor Marketing Pty Ltd
 VP & EA Farrell

New Zealand Avocado Exports –Forecast v Import Statistics (5.5kg eqv trays)

Export Dest'n	Aug 07	Sep 07	Oct 07	Nov 07	Dec 07	Jan 08	Feb 08	Mar 08	Apr 08	Total
NZ export forecast		100,000	350,000	600,000	550,000	600,000	450,000	140,000	10,000	2,800,000
Australia	355		162,634	<i>Avail mid Dec</i>						162,989
USA		75,241	186,589	100,393	<i>66,444 (to 2/12/07)</i>					428,667
Japan		26,151	43,179	<i>Avail end Dec</i>						69,330

Percentage dispatched by region (Based on seasonal forecast - 2007)

