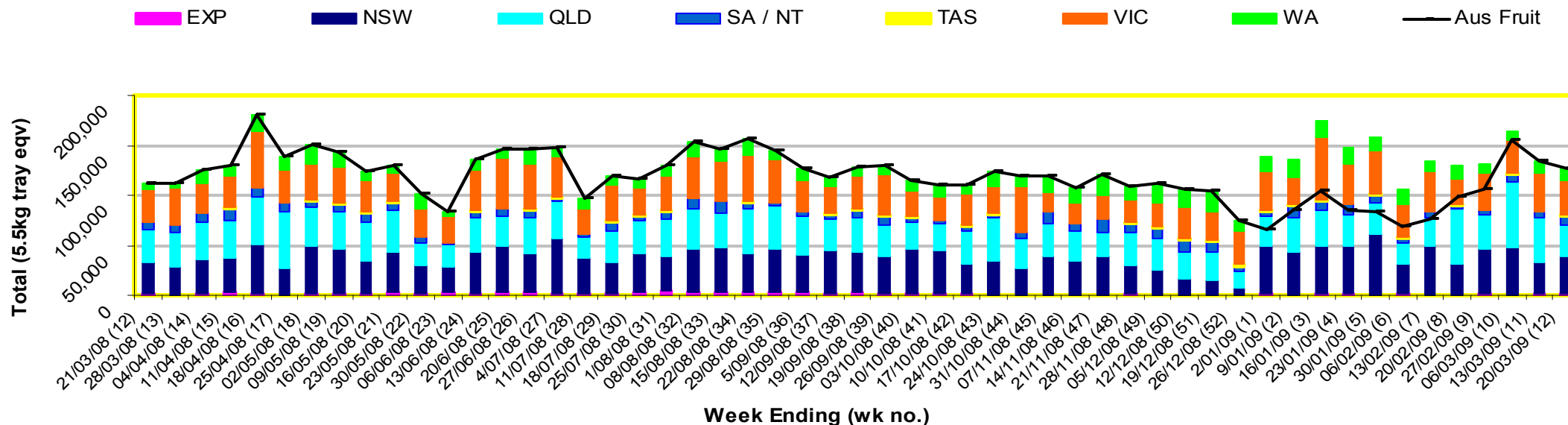


INFOCADO WEEKLY REPORT: 14th - 20th March 2009 (Wk 12)

Industry Dispatches 14th - 20th March 2009 (Wk 12)

Dest. State	5.5kg										Bulk 10Kg	P/PK Kg	Other Kg	5.5Kg Eqv Trays All Total
	<16	16	18	20	22	23	25	28	28+	Total				
EXP		1	7	20		61	6	1,085	534	1,714	11			1,734
NSW	334	1,005	2,698	7,074	919	8,861	4,780	3,828	132	29,631	3,044	6,543		36,356
QLD		11	574	2,294	152	4,439	10,093	5,675	163	23,401	4,638	3,993	637	32,676
SA / NT		18	36	680		1,360	1,559	1,118		4,771	574	10,472		7,719
TAS						742	1,083			1,825				1,825
VIC	393	1,918	6,320	6,667	20	7,411	1,795	1,210	31	25,765	4,431	3,828		34,517
WA	186	391	524	1,971		3,005	3,055	363	13	9,508	1,059	2,500		11,888
Total	913	3,344	10,159	18,706	1,091	25,879	22,371	13,279	873	96,615	13,757	27,336	637	126,714

Throughput Australian & NZ avocados by destination State Throughput 1st January 2009 to date = 1,680,746 5.5kg tray eqv



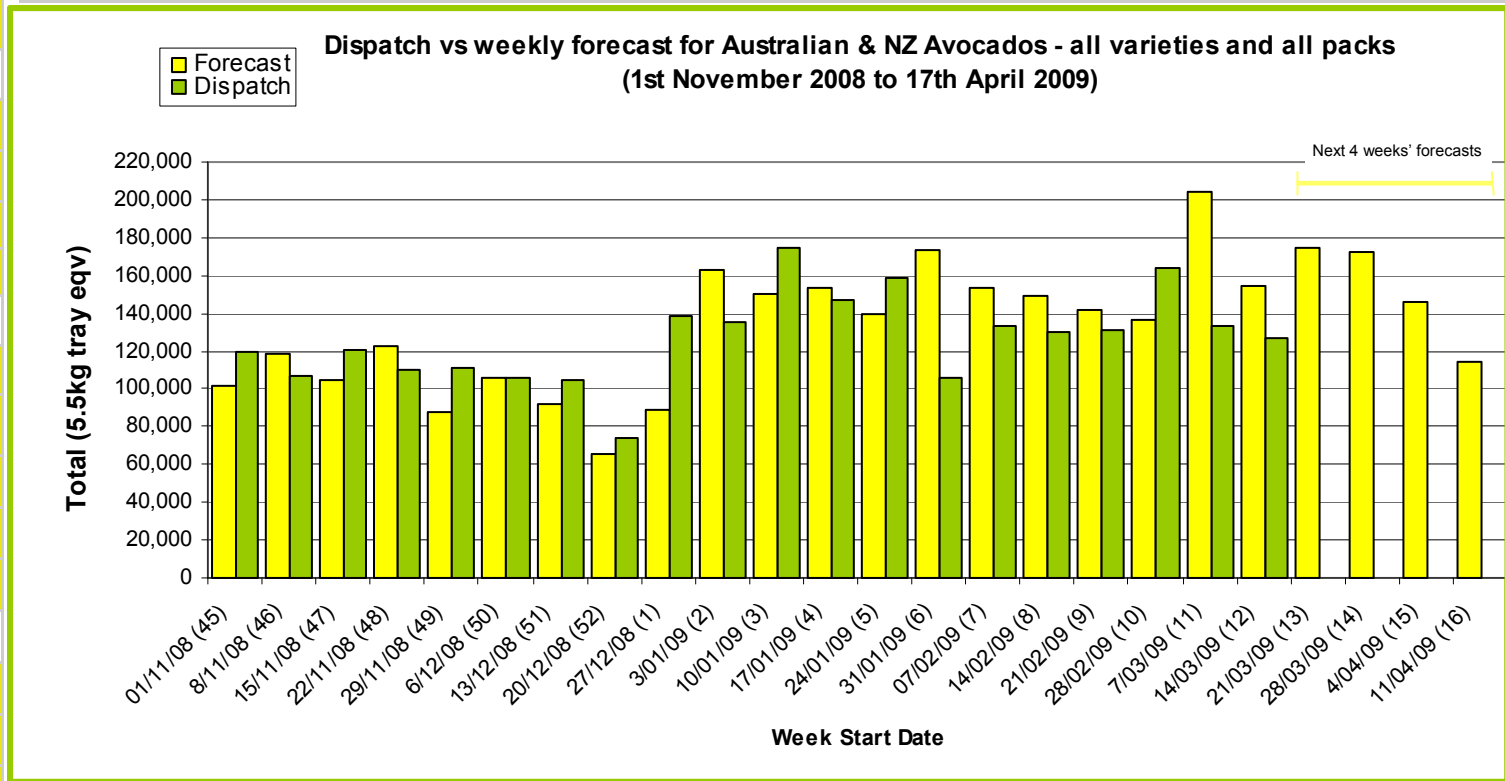
Comments from the CEO

- The New Zealand import season has finished therefore the majority of fruit now in the market (except in WA) is North Qld Shepard.
- Avocados are on add in either or both the major retailers in all cities this week.



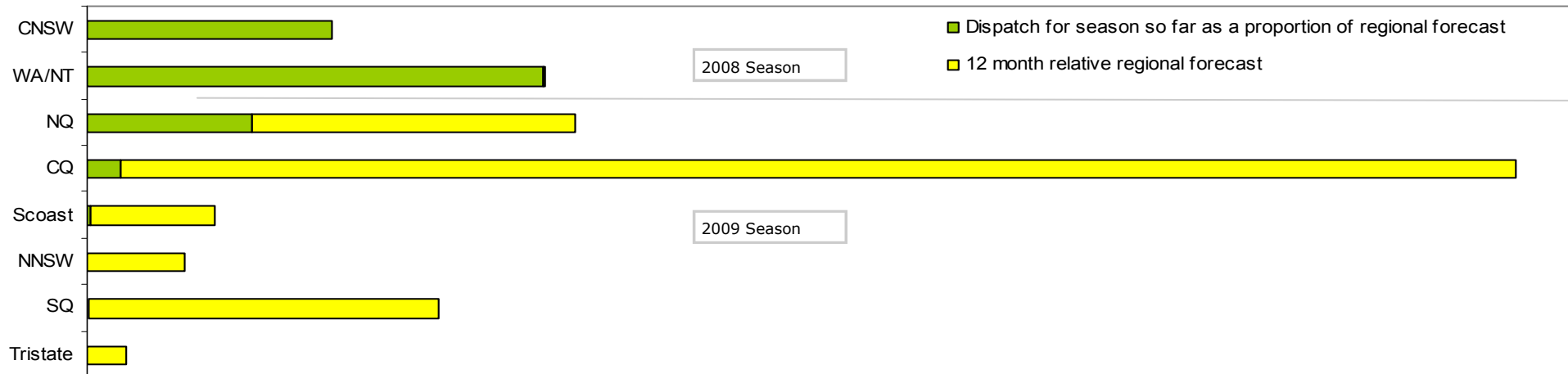
Forecast Data (Week 12 - 16)				
Variety	Trays - Total	Bulk	P/Pk	All - Total
	5.5Kg Eqv	10Kg	Kg	5.5Kg Eqv
Week 12—begin 14/03/09				
Fuerte	2,000	40		2,073
Hass	13,614	1,349	2,500	16,522
Shepard	109,100	11,571	29,500	135,502
Week Total	124,714	12,960	32,000	154,096
Week 13 —begin 21/03/09				
Fuerte	600	10		618
Hass	13,371	1,660	2,000	16,753
Shepard	131,290	11,942	24,000	157,367
Week Total	145,261	13,612	26,000	174,737
Week 14 —begin 28/03/09				
Fuerte	600	10		618
Hass	13,291	130	2,000	13,891
Shepard	127,675	11,692	41,800	156,533
Wurtz	1,000	20		1,036
Week Total	142,565	11,852	43,800	172,078
Week 15 —begin 4/04/09				
Fuerte	1,500	25		1,545
Hass	3,173	135	2,000	3,782
Shepard	113,715	10,300	41,500	139,987
Wurtz	1,000	20		1,036
Week Total	119,388	10,480	43,500	146,352
Week 16 —begin 11/04/09				
Hass	1,500	200		1,864
Shepard	94,780	4,950	41,500	111,325
Wurtz	1,000	20		1,036
Week Total	97,280	5,170	41,500	114,225

Green shading indicates dispatch data		Yellow shading indicates forecast data			
Dispatch Data (Week 12 - begin 14/03/09)					
Variety	Trays	Bulk	P/Pk	Other	5.5Kg Eqv
	5.5kg eqv	10Kg	Kg	Kg	Total Trays
Fuerte	2,152	85		70	2,320
Hass	33,472	2,060	26,720		42,075
Lamb Hass	623	29			676
Shepard	60,366	11,583	616	567	81,641
Total	96,613	13,757	27,336	637	126,712

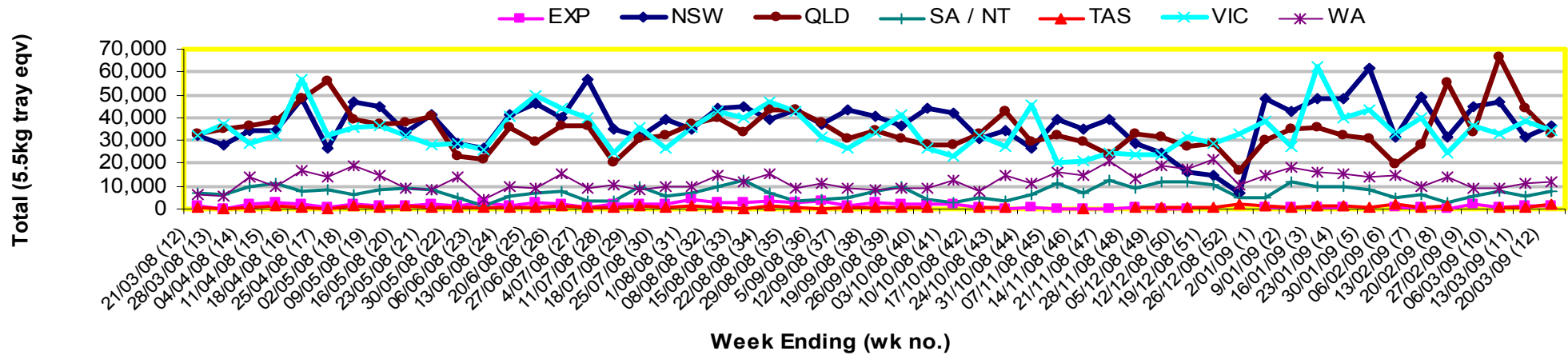


New Zealand Avocado Exports—Forecast v Import Statistics (5.5kg eqv trays) August 2008-April 2009										
Export Dest'n	Aug	Sep	Oct	Nov	Dec	Jan	Feb	Mar	Apr	Total to date
NZ Export Forecast		26,730	177,487	319,958	378,497	304,722	122,824	6,282		1,336,500
Australia		7,713	210,274	312,989	345,200	235,527	150,635			1,262,338
USA										
Japan		3,920	21,563	37,519	27,534	9,600				100,135
Total		11,633	231,837	350,508	372,734	245,127	150,635			1,362,657

Percentage dispatched by region (Based on seasonal forecast - 2009)



Throughput Australian & NZ avocados by destination State Throughput 1st January 2009 to date = 1,680,746 5.5kg tray eqv



Week 12 contributors - Packhouses

Avocado Ridge	Lavers Orchards
Avocados With Altitude Pty Ltd	Mariners Rest
Avonova	Natures Fruit Company
Battistin Orchards	One Harvest
Blushing Acres Pty Ltd	R & M Waterman
Delroy Orchards	Simpsons Farms Pty Ltd
Donovan Family Investment trust	Sunfresh
Gunnado Farm	Sunnyspot Packhouse PL
Hilltop Mareeba	SuperPak Group Pty Ltd
J & K Hummer	Willow Creek Strawberries Pty Ltd

Week 12 contributors - Wholesalers

Barkers (Melbourne)	Quality Produce International (Perth)
Dykes Bros (Melbourne)	Sculli & Co Pty Ltd (Melbourne)
Etherington (Perth)	The La Manna Group (Adelaide)
Kelly's (Melbourne)	The La Manna Group (Brisbane)
Mercer Mooney (Perth)	The La Manna Group (Melbourne)
Murray Bros (Brisbane)	United Fresh (Adelaide)
Premier Fruits Pty Ltd (Melbourne)	

Sales Report including Direct Sales from Packhouses, Wholesale Sales and Stock on Hand at Wholesale Level

	Trays 5.5kg eqv (incl. Mod6 & P84)				Bulk 10kg Cartons				Pre-Pack Kg				Total (5.5kg eqv)						
	Hass	Shepard	Other	Total	Hass	Shepard	Other	Total	5.5kg eqv	Hass	Shepard	Other	Total	5.5kg eqv	Hass	Shepard	Other	Total	
NSW																			
Total supermarket sales																			
Total non supermarket sales	# Full data set not included because not enough Sydney wholesalers contributed data this week																		
Total exports																			
Total sales	3,377	7,734		11,111		528		528	960						3,377	8,694		12,071	
Total stock on hand																			
QLD																			
Total supermarket sales																			
Total non supermarket sales	# Full data set not included because not enough Brisbane wholesalers contributed data this																		
Total exports																			
Total sales	18,911	10,790		29,702		1,444		1,444	2,625				176	176	32	18,911	13,448	32	32,359
Total stock on hand																			
SA & TAS																			
Total supermarket sales																			
Total non supermarket sales	# Full data set not included because not enough Adelaide wholesalers contributed data this																		
Total exports																			
Total sales	4,252	2,854	303	7,409	107	100		207	376				176	176	32	4,447	3,068	303	7,818
Total stock on hand #																			
VIC																			
Total supermarket sales	4,476	8,139		12,615		528		528	960						4,476	9,099		13,575	
Total non supermarket sales	8,632	2,204		10,836	929	1,136		2,065	3,755						10,321	4,270		14,591	
Total exports																			
Total sales	13,107	10,343		23,451	929	1,664		2,593	4,715						14,796	13,369		28,165	
Total stock on hand		363		363	2,969	515		3,484	6,335						5,398	1,299		6,697	
WA																			
Total supermarket sales	3,712	2,077		5,789		264		264	480						3,712	2,557		6,269	
Total non supermarket sales	5,148			5,148	787			787	1,431						6,579			6,579	
Total exports																			
Total sales	8,860	2,077		10,937	787	264		1,051	1,911						10,291	2,557		12,848	
Total stock on hand #	6,670			6,670	223			223	405						7,075			7,075	
TOTAL																			
Total supermarket sales	20,500	27,134	12	47,645		2,301		2,301	4,184				352	352	64	20,500	31,381	12	51,893
Total non supermarket sales	28,008	4,951	291	33,250	1,823	1,688		3,511	6,384						31,322	8,021	291	39,634	
Total exports																			
Total sales	48,507	33,799	303	82,609	1,823	4,000		5,823	10,587				352	352	64	51,822	41,136	303	93,261
Total stock on hand	21,174	2,765	463	24,402	3,199	492		3,691	6,711						26,990	3,660	463	31,113	

Weekly National Sales

