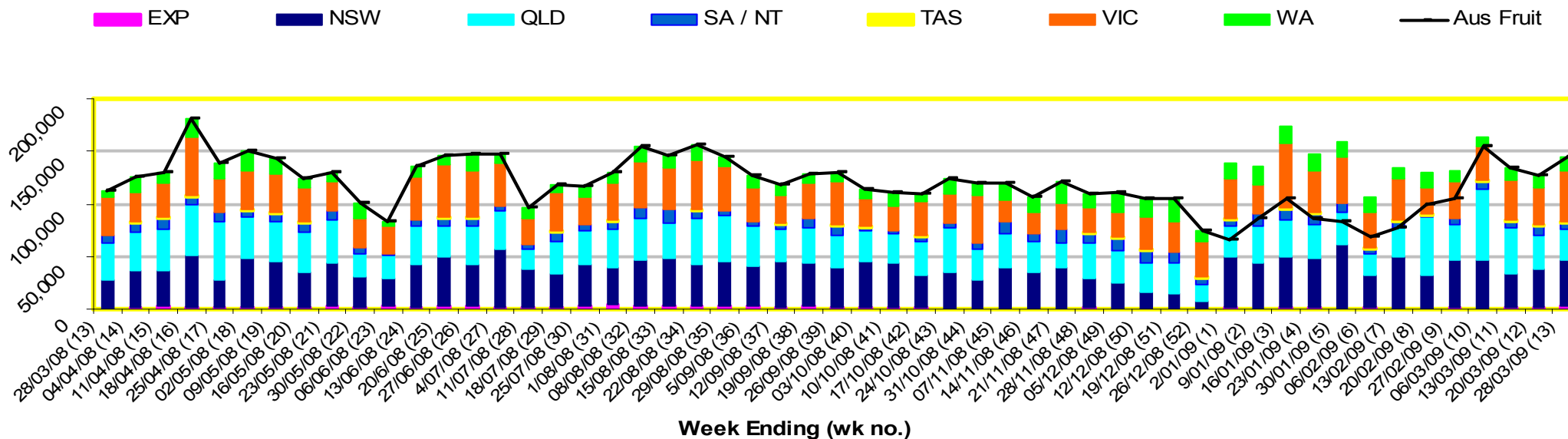


INFOCADO WEEKLY REPORT: 21st - 27th March 2009 (Wk 13)

Industry Dispatches 21st - 27th March 2009 (Wk 13)

| Dest. State | 5.5kg | | | | | | | | | | Bulk 10Kg | P/PK Kg | Other Kg | 5.5Kg Eqv Trays All Total | |
|--------------|------------|--------------|--------------|---------------|--------------|---------------|---------------|---------------|--------------|-------|----------------|---------------|---------------|---------------------------------|----------------|
| | <16 | 16 | 18 | 20 | 22 | 23 | 25 | 28 | 28+ | Total | | | | | |
| EXP | | | | | | | | 1,552 | 925 | | 2,477 | | | | 2,477 |
| NSW | 203 | 481 | 2,987 | 7,651 | 1,963 | 6,154 | 13,313 | 3,918 | 75 | | 36,745 | 3,151 | 6,688 | | 43,690 |
| QLD | | 7 | 632 | 2,021 | 3 | 4,758 | 7,873 | 4,187 | 382 | | 19,863 | 3,924 | 17,820 | 150 | 30,265 |
| SA / NT | | 28 | 62 | 292 | | 787 | 1,601 | 965 | 199 | | 3,934 | 655 | 1,584 | | 5,413 |
| TAS | | | | | | 1,187 | 401 | | | | 1,588 | | 176 | | 1,620 |
| VIC | 100 | 901 | 4,538 | 10,760 | 498 | 16,290 | 3,438 | 2,860 | 13 | | 39,398 | 4,300 | 4,444 | | 48,024 |
| WA | 72 | 423 | 595 | 1,775 | | 3,783 | 3,473 | 202 | 16 | | 10,339 | 1,127 | 2,000 | | 12,752 |
| Total | 375 | 1,840 | 8,814 | 22,499 | 2,464 | 32,959 | 30,099 | 13,684 | 1,610 | | 114,344 | 13,157 | 32,712 | 150 | 144,241 |

Throughput Australian & NZ avocados by destination State Throughput 1st January 2009 to date = 1,824,986 5.5kg tray eqv

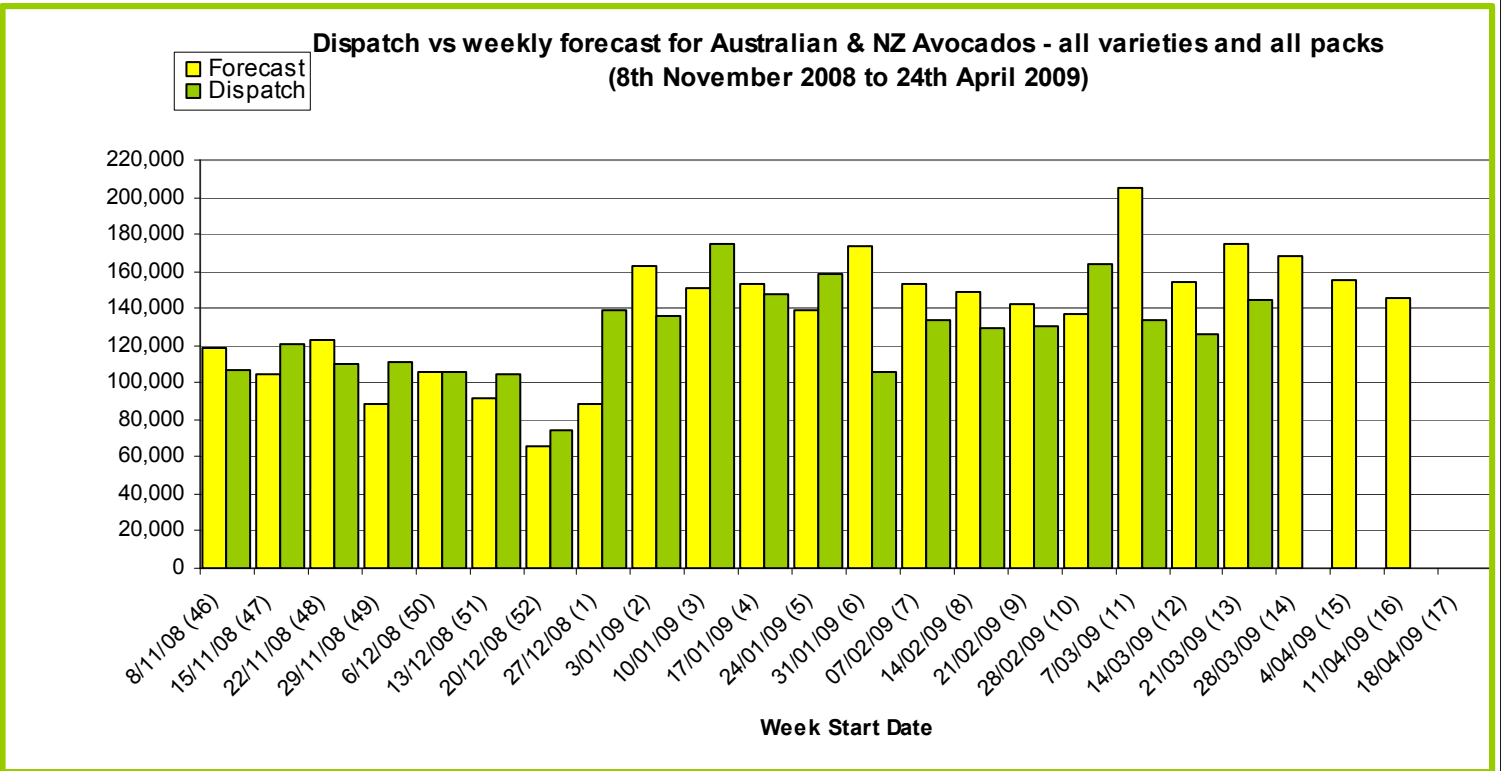


Comments from the CEO

- Week four of the weekly forecast has been removed from the report this week and will not be included until we can get better numbers on a regular basis.
- Volumes of fruit will continue to grow weekly with both NQ and CQ packing.
- Promotion activity is in full swing, magazine, TV, online and PR are all under way.

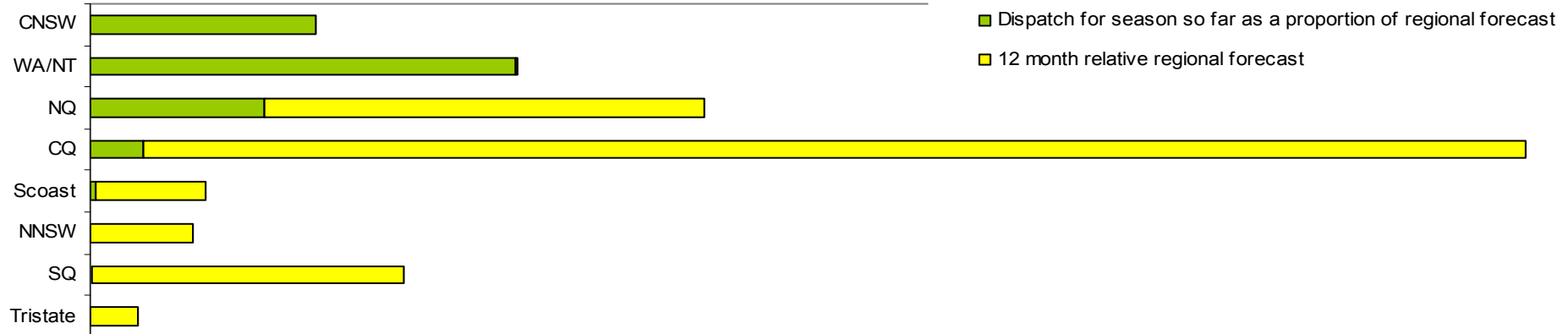
| Forecast Data (Week 13 - 17) | | | | |
|------------------------------|----------------|---------------|---------------|----------------|
| Variety | Trays - Total | Bulk | P/Pk | All - Total |
| | 5.5Kg Eqv | 10Kg | Kg | 5.5Kg Eqv |
| Week 13 —begin 21/03/09 | | | | |
| Fuerte | 600 | 10 | | 618 |
| Hass | 13,371 | 1,660 | 2,000 | 16,753 |
| Shepard | 131,290 | 11,942 | 24,000 | 157,367 |
| Week Total | 145,261 | 13,612 | 26,000 | 174,737 |
| Week 14 —begin 28/03/09 | | | | |
| Fuerte | 900 | 60 | | 1,009 |
| Hass | 11,345 | 650 | 2,000 | 12,891 |
| Shepard | 131,973 | 7,300 | 41,800 | 152,846 |
| Wurtz | 1,000 | 20 | | 1,036 |
| Week Total | 145,219 | 8,030 | 43,800 | 167,783 |
| Week 15 —begin 4/04/09 | | | | |
| Fuerte | 1,850 | 75 | | 1,986 |
| Hass | 6,755 | 835 | 1,500 | 8,546 |
| Shepard | 125,045 | 6,050 | 41,500 | 143,590 |
| Wurtz | 1,000 | 20 | | 1,036 |
| Week Total | 134,649 | 6,980 | 43,000 | 155,158 |
| Week 16 —begin 11/04/09 | | | | |
| Fuerte | 1,850 | 80 | | 1,995 |
| Hass | 12,000 | 1,200 | | 14,182 |
| Sharwil | 100 | | | 100 |
| Shepard | 112,868 | 4,500 | 41,500 | 128,595 |
| Wurtz | 1,000 | 20 | | 1,036 |
| Week Total | 127,818 | 5,800 | 41,500 | 145,908 |
| Week 17 —begin 18/04/09 | | | | |
| | | | | |
| | | | | |
| | | | | |
| Week Total | | | | |

| Green shading indicates dispatch data | | | | | | Yellow shading indicates forecast data | | | | | |
|--|----------------|--|---------------|--|---------------|--|------------|--|----------------|--|--|
| Dispatch Data (Week 13 - begin 21/03/09) | | | | | | | | | | | |
| Variety | Trays | | Bulk | | P/Pk | | Other | | 5.5Kg Eqv | | |
| | 5.5kg eqv | | 10Kg | | Kg | | Kg | | Total Trays | | |
| Fuerte | 1,675 | | 156 | | | | 150 | | 1,986 | | |
| Hass | 12,778 | | 259 | | 2,000 | | | | 13,613 | | |
| Lamb Hass | 770 | | 44 | | | | | | 850 | | |
| Shepard | 99,122 | | 12,698 | | 30,712 | | | | 127,793 | | |
| Total | 114,345 | | 13,157 | | 32,712 | | 150 | | 144,242 | | |



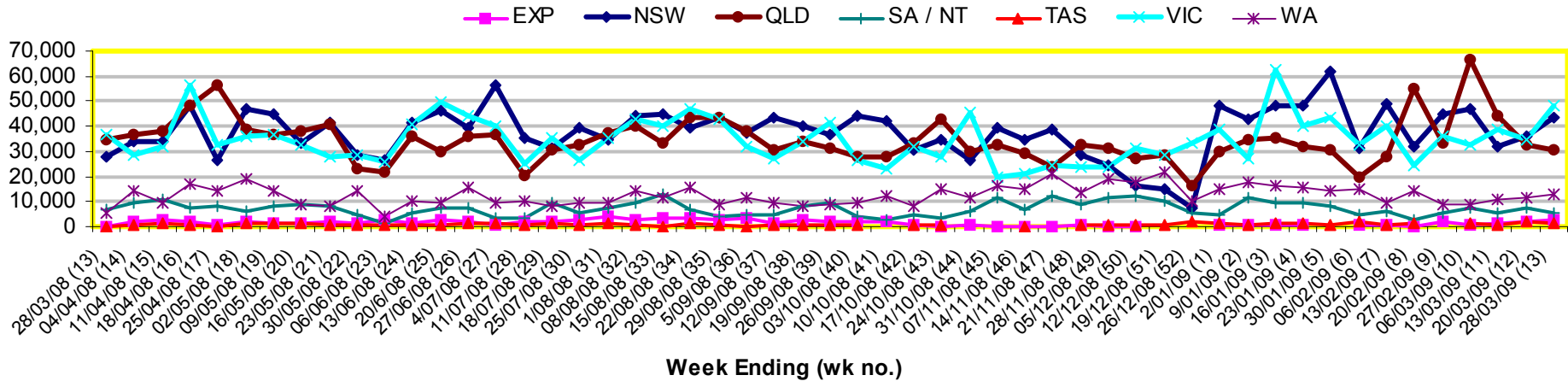
| New Zealand Avocado Exports—Forecast v Import Statistics (5.5kg eqv trays) August 2008-April 2009 | | | | | | | | | | |
|---|-----|---------------|----------------|----------------|----------------|----------------|----------------|-------|-----|------------------|
| Export Dest'n | Aug | Sep | Oct | Nov | Dec | Jan | Feb | Mar | Apr | Total to date |
| NZ Export Forecast | | 26,730 | 177,487 | 319,958 | 378,497 | 304,722 | 122,824 | 6,282 | | 1,336,500 |
| Australia | | 7,713 | 210,274 | 312,989 | 345,200 | 235,527 | 150,635 | | | 1,262,338 |
| USA | | | | | | | | | | |
| Japan | | 3,920 | 21,563 | 37,519 | 27,534 | 9,600 | | | | 100,135 |
| Total | | 11,633 | 231,837 | 350,508 | 372,734 | 245,127 | 150,635 | | | 1,362,657 |

Percentage dispatched by region (Based on seasonal forecast - 2009)



Throughput Australian & NZ avocados by destination State

Throughput 1st January 2009 to date = 1,824,986 5.5kg tray eqv



Week 13 contributors - Packhouses

Avocado Ridge
 Avocados With Altitude Pty Ltd
 Avonova
 Balmoral Orchard
 Battistin Orchards
 Bellview Orchards Pty Ltd
 Chris and Sue Allan
 Delroy Orchards
 Donovan Family Investment trust
 G & C Christensen
 Goodlife Orchards
 Gunnado Farm
 Hilltop Mareeba
 J & K Hummer
 JC & SK Smythe

Lavers Orchards
 Mariners Rest
 Mount Hallen Avocados
 Natures Fruit Company
 One Harvest
 R & M Waterman
 Simpsons Farms Pty Ltd
 Sunfresh
 Sunnyspot Packhouse PL
 SuperPak Group Pty Ltd
 Theart Farming Pty Ltd
 Tinaroo Falls Avocado Trust
 Willow Creek Strawberries Pty Ltd
 Zanfar Pty Ltd

Week 13 contributors - Wholesalers

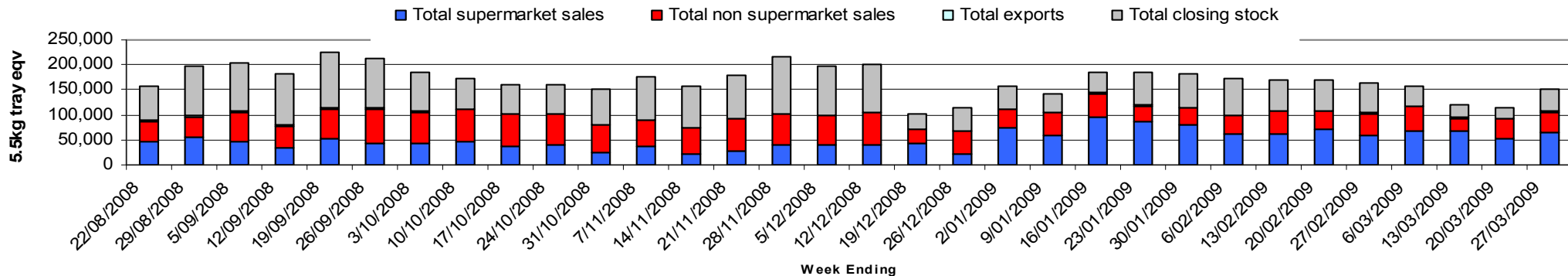
Barkers (Melbourne)
 Costa Exchange Trading (Brisbane)
 Dykes Bros (Melbourne)
 Etherington (Perth)
 Mercer Mooney (Perth)
 Murray Bros (Brisbane)
 Quality Produce International (Perth)

Romeos Marketing (Brisbane)
 Sculli & Co Pty Ltd (Melbourne)
 The La Manna Group (Adelaide)
 The La Manna Group (Brisbane)
 The La Manna Group (Melbourne)
 United Fresh (Adelaide)

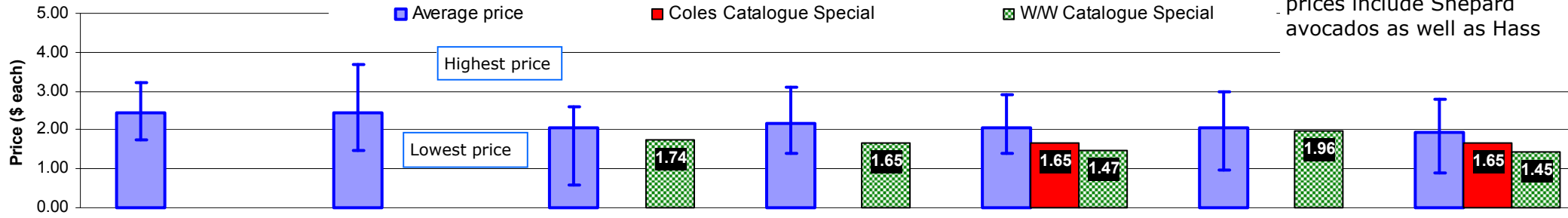
Sales Report including Direct Sales from Packhouses, Wholesale Sales and Stock on Hand at Wholesale Level

| | Trays 5.5kg eqv (incl. Mod6 & P84) | | | | Bulk 10kg Cartons | | | | Pre-Pack Kg | | | | Total (5.5kg eqv) | | | | | |
|-----------------------------|------------------------------------|---------|-------|--------|-------------------|---------|-------|-------|-------------|-------|---------|-------|-------------------|-----------|--------|---------|--------|---------|
| | Hass | Shepard | Other | Total | Hass | Shepard | Other | Total | 5.5kg eqv | Hass | Shepard | Other | Total | 5.5kg eqv | Hass | Shepard | Other | Total |
| NSW | | | | | | | | | | | | | | | | | | |
| Total supermarket sales | | | | | | | | | | | | | | | | | | |
| Total non supermarket sales | | | | | | | | | | | | | | | | | | |
| Total exports | | | | | | | | | | | | | | | | | | |
| Total sales | 890 | 11,086 | | 11,976 | | | | | | | | | 6,688 | 6,688 | 1,216 | 890 | 12,302 | 13,192 |
| Total stock on hand | | | | | | | | | | | | | | | | | | |
| QLD | | | | | | | | | | | | | | | | | | |
| Total supermarket sales | 2,753 | 11,664 | 2 | 14,420 | | 1,265 | | 1,265 | 2,300 | 11 | 19,426 | | 19,437 | 3,534 | 2,755 | 17,496 | 2 | 20,254 |
| Total non supermarket sales | 14,289 | 3,467 | | 17,756 | 102 | 1,068 | | 1,170 | 2,127 | | | | | | 14,474 | 5,409 | | 19,883 |
| Total exports | | 2,477 | | 2,477 | | | | | | | | | | | | 2,477 | | 2,477 |
| Total sales | 17,042 | 17,608 | 2 | 34,653 | 102 | 2,333 | | 2,435 | 4,427 | 11 | 19,426 | | 19,437 | 3,534 | 17,230 | 25,382 | 2 | 42,614 |
| Total stock on hand | 22,506 | 3,240 | | 25,746 | 90 | 100 | | 190 | 345 | | 32 | | 32 | 6 | 22,670 | 3,427 | | 26,097 |
| SA & TAS | | | | | | | | | | | | | | | | | | |
| Total supermarket sales | | | | | | | | | | | | | | | | | | |
| Total non supermarket sales | | | | | | | | | | | | | | | | | | |
| Total exports | | | | | | | | | | | | | | | | | | |
| Total sales | 2,554 | 2,914 | 295 | 5,763 | | 317 | | 317 | 576 | | 1,760 | | 1,760 | 320 | 2,554 | 3,811 | 295 | 6,660 |
| Total stock on hand # | | | | | | | | | | | | | | | | | | |
| VIC | | | | | | | | | | | | | | | | | | |
| Total supermarket sales | | 18,674 | | 18,674 | | 1,144 | | 1,144 | 2,080 | | 4,092 | | 4,092 | 744 | | 21,498 | | 21,498 |
| Total non supermarket sales | 2,557 | 2,570 | 55 | 5,182 | 163 | 2,108 | | 2,271 | 4,129 | | | | | | 2,854 | 6,402 | 55 | 9,311 |
| Total exports | | | | | | | | | | | | | | | | | | |
| Total sales | 2,557 | 21,244 | 55 | 23,856 | 163 | 3,252 | | 3,415 | 6,209 | | 4,092 | | 4,092 | 744 | 2,854 | 27,900 | 55 | 30,809 |
| Total stock on hand | | 1,600 | 77 | 232 | 4,651 | 520 | | 5,171 | 9,402 | | | | | | 8,457 | 2,545 | 77 | 11,079 |
| WA | | | | | | | | | | | | | | | | | | |
| Total supermarket sales | 5,459 | 1,484 | | 6,943 | | 528 | 15 | 543 | 987 | 2,000 | | | 2,000 | 364 | 5,823 | 2,444 | 27 | 8,294 |
| Total non supermarket sales | 3,668 | | | 3,668 | 711 | 39 | | 750 | 1,364 | | | | | | 4,961 | 71 | | 5,032 |
| Total exports | | | | | | | | | | | | | | | | | | |
| Total sales | 9,127 | 1,484 | | 10,611 | 711 | 567 | 15 | 1,293 | 2,351 | 2,000 | | | 2,000 | 364 | 10,783 | 2,515 | 27 | 13,325 |
| Total stock on hand # | 5,688 | | | 5,688 | 257 | 225 | | 482 | 876 | | | | | | 6,155 | 409 | | 6,564 |
| TOTAL | | | | | | | | | | | | | | | | | | |
| Total supermarket sales | 9,844 | 44,561 | 2 | 54,408 | | 2,937 | 15 | 2,952 | 5,367 | 2,011 | 31,966 | | 33,977 | 6,178 | 10,210 | 55,713 | 29 | 65,953 |
| Total non supermarket sales | 22,326 | 7,298 | 350 | 29,974 | 976 | 3,532 | | 4,508 | 8,196 | | | | | | 24,101 | 13,720 | 350 | 38,171 |
| Total exports | | 2,477 | | 2,477 | | | | | | | | | | | | 2,477 | | 2,477 |
| Total sales | 32,171 | 54,336 | 352 | 86,859 | 976 | 6,469 | 15 | 7,460 | 13,564 | 2,011 | 31,966 | | 33,977 | 6,178 | 34,311 | 71,910 | 379 | 106,600 |
| Total stock on hand | 29,058 | 6,498 | 245 | 34,357 | 5,005 | 900 | 100 | 6,005 | 10,918 | | 32 | | 32 | 6 | 38,158 | 8,141 | 427 | 46,726 |

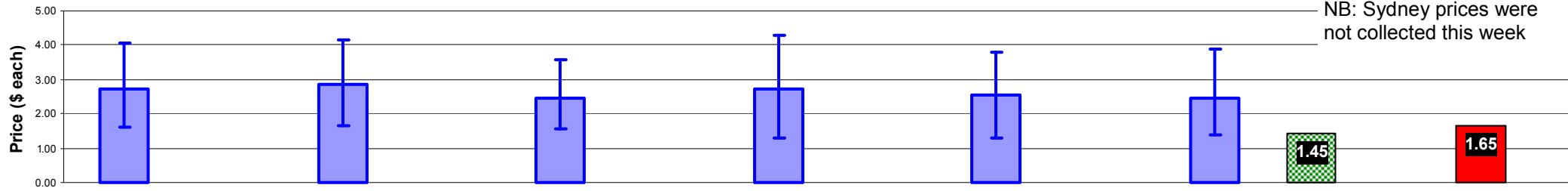
Weekly National Sales



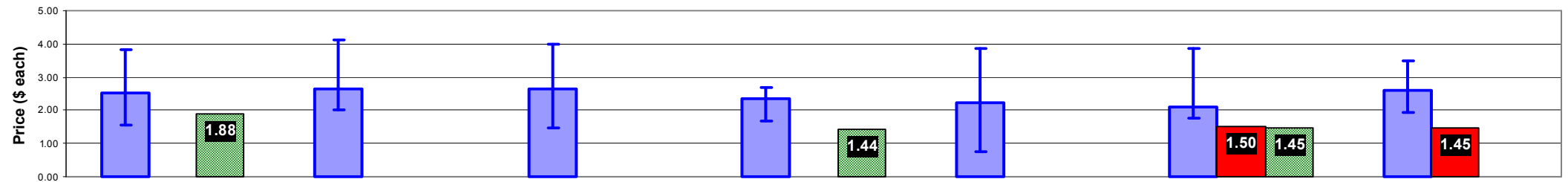
Average Avocado Retail Prices - Brisbane



Average Avocado Retail Prices - Sydney



Average Avocado Retail Prices - Melbourne



Average Avocado Retail Prices - Perth

