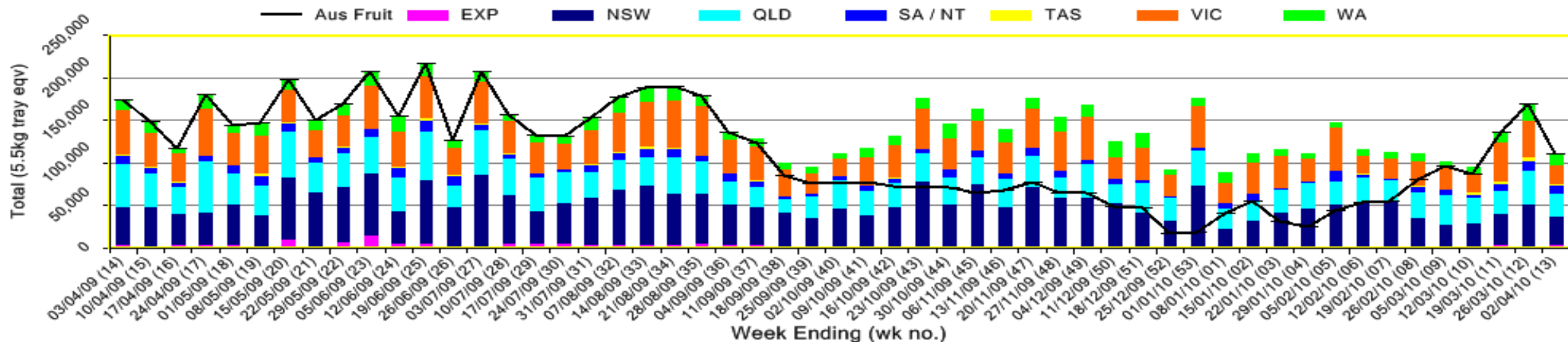


INFOCADO WEEKLY REPORT: 27th March - 2nd April 2010 (Wk 13)

Industry Dispatches 27th March - 2nd April 2010 (Wk 13)

Dest. State	5.5kg										Trays - Total	Bulk	P/PK	Proc	5.5Kg Eqv Trays All
	<16	16	18	20	22	23	25	28	28+	5.5Kg Eqv	10Kg	Kg	Kg	Total	
EXP									2,344	1,407	3,751				3,751
NSW	12	317	1,961	6,871	446	6,673	2,861	2,613	58		21,812	4,280	14,932		32,309
QLD	8	240	1,284	2,707	602	3,581	8,893	2,625	868		20,808	2,662	10,768	500	27,697
SA / NT		47	222	601		498	5,091	1,079	86		7,624	480	2,376		8,929
TAS							1,513				1,513		84		1,528
VIC	147	806	3,687	6,401	777	3,673	1,950	1,428	516		19,385	1,453	3,780		22,714
WA		136	290	1,237	396	3,902	3,706	638			10,305	1,279	288		12,682
Total	167	1,546	7,444	17,817	2,221	18,327	24,014	10,727	2,935		85,198	10,154	32,228	500	109,611

Throughput Australian & NZ avocados by destination state
Throughput 1st January 2010 to date = 1,703,120 5.5kg tray eqv



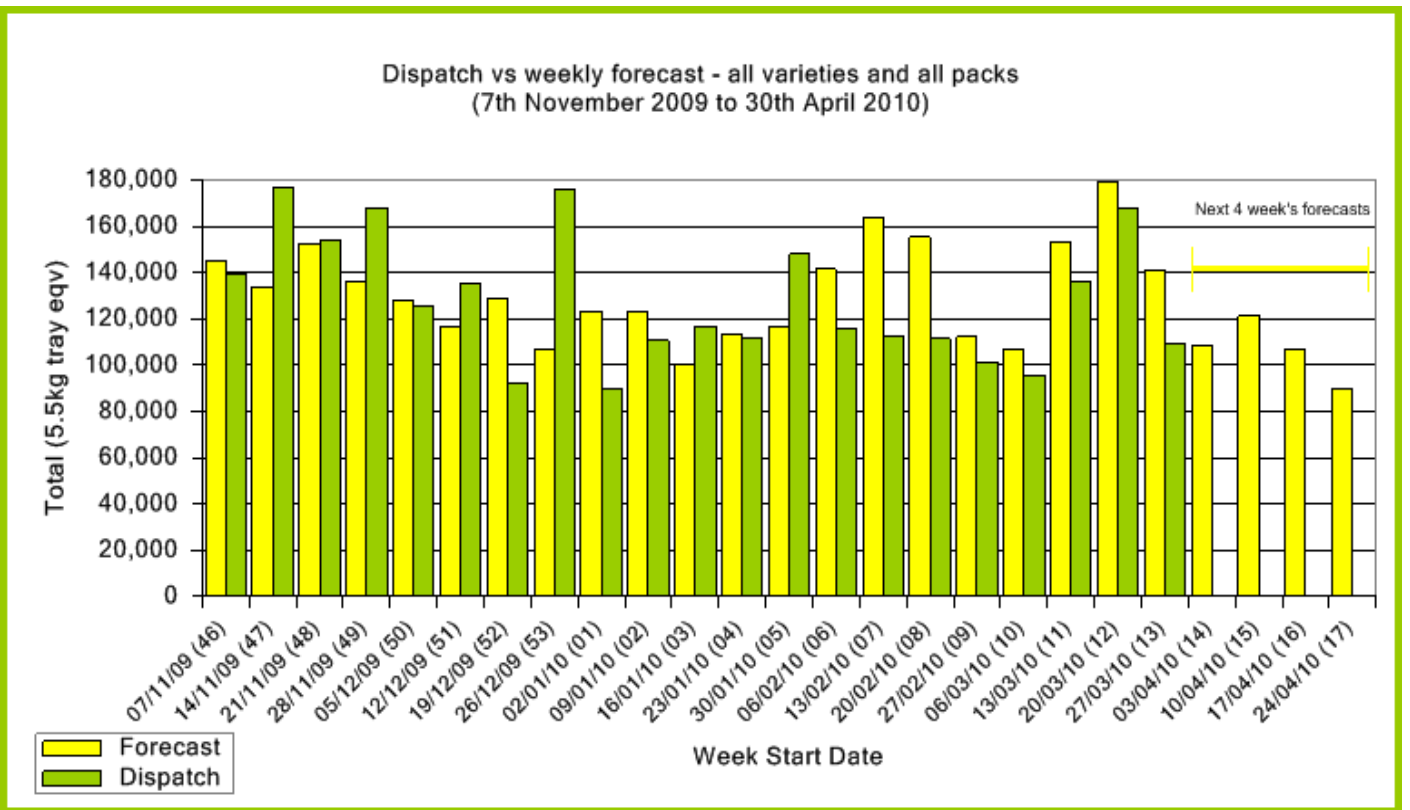
Comments from the CEO

- Forecasts for fruit dispatches have dropped off over the next four weeks with the change over from Shepard to Hass. This is a timely reminder to please include your upcoming Hass forecasts when updating your forecast next week even if you don't start for another couple of weeks.
- Both Western Australia and New Zealand are now finished.
- Please note that the results of the dry matter test conducted on fruit collected from the Sydney Markets on Monday 29th March are included this week. The report has been attached as a separate document.



Forecast Data (Week 13 - 17)					
Variety	Trays - Total	Bulk	P/Pk	Proc	All - Total
	5.5Kg Eqv	10Kg	Kg	Kg	5.5Kg Eqv
Week 13 - begin 27/03/2010					
Fuerte	700	20			736
Hass	1,134	72			1,265
Shepard	118,172	8,100	33,200	500	139,026
Wurtz	50	5			59
Week Total	120,056	8,197	33,200	500	141,087
Week 14 - begin 03/04/2010					
Fuerte	1,450	128			1,683
Hass	1,600	140			1,855
Sharwil	750	100			932
Shepard	91,264	5,650	13,400		103,973
Week Total	95,064	6,018	13,400		108,442
Week 15 - begin 10/04/2010					
Fuerte	1,750	260			2,223
Hass	14,365	1,600	1,000	200	17,492
Sharwil	350	50			441
Shepard	90,537	4,596	13,400		101,329
Week Total	107,002	6,506	14,400	200	121,485
Week 16 - begin 17/04/2010					
Fuerte	1,000	50			1,091
Hass	28,355	2,400	3,000		33,264
Shepard	65,102	2,800	12,200		72,411
Week Total	94,456	5,250	15,200		106,765
Week 17 - begin 24/04/2010					
Hass	32,333	2,200	3,000		36,878
Shepard	48,344	1,400	10,300		52,762
Week Total	80,676	3,600	13,300		89,639

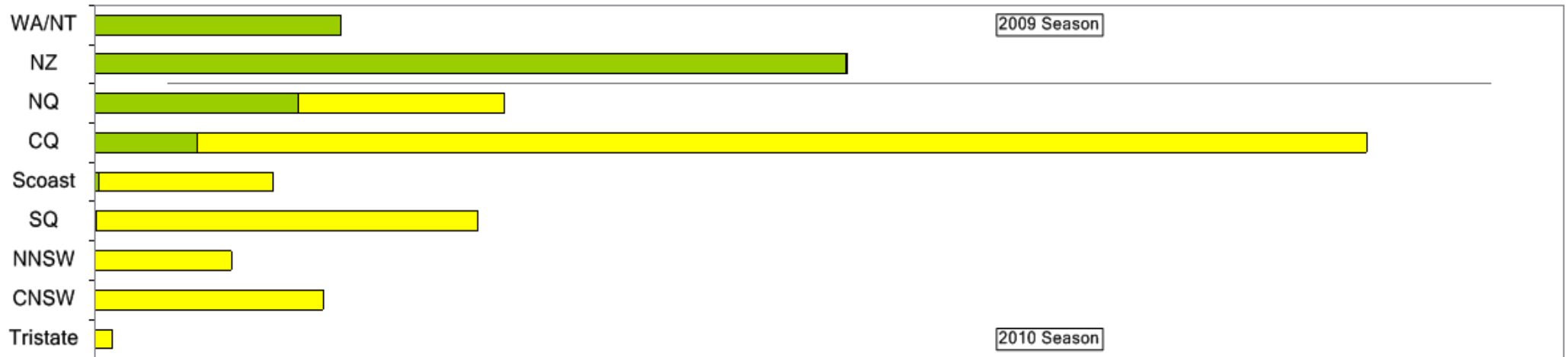
Green shading indicates dispatch data			Yellow shading indicates forecast data		
Dispatch Data (Week 13 - begin 27/03/2010)					
Variety	Trays	Bulk	P/PK	Proc	5.5Kg Eqv
	5.5Kg Eqv	10Kg	Kg	Kg	Total Trays
Edrinol	734	60			843
Fuerte	1,945	138			2,196
Hass	1,267	127			1,498
Sharwil	359	40			432
Shepard	80,894	9,789	32,228	500	104,643
Total	85,199	10,154	32,228	500	109,61



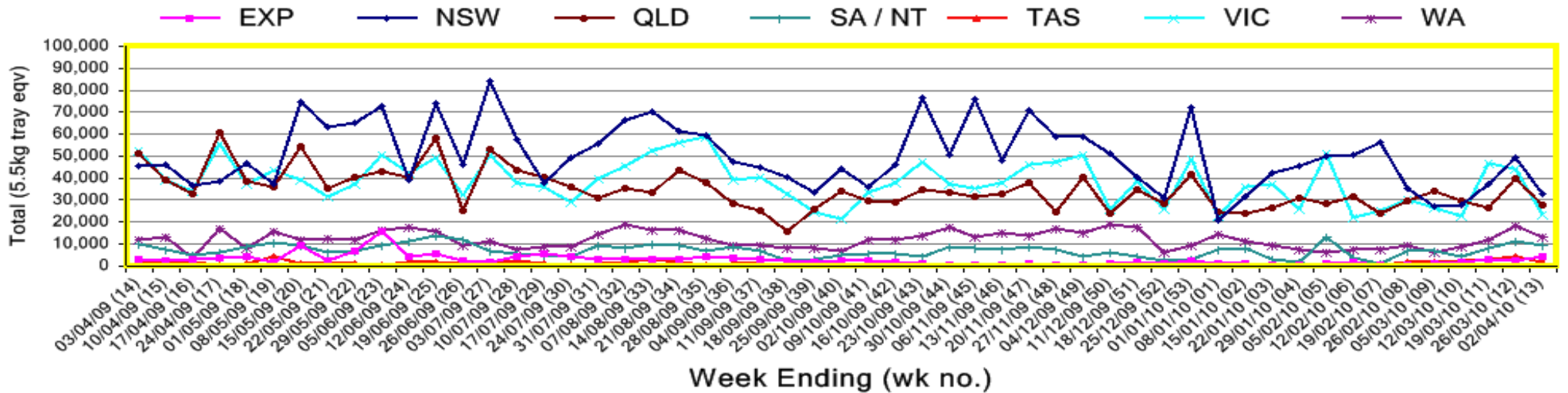
New Zealand Avocado Exports—Forecast v Import Statistics (5.5kg eqv trays) August 2009-April 2010										
Export Dest'n	Aug	Sep	Oct	Nov	Dec	Jan	Feb	Mar	Apr	Total to date
NZ Export to Australia Forecast		5,055	314,324	314,516	354,135	328,074	344,756	133,464	5,641	1,799,965
Australia		41,599	321,706	363,357	347,496	439,691	258,767	16,210		1,788,826
USA	2,727	15,090	22,787	6,183						46,787
Japan	4,519	28,746	64,348	69,842	45,244	14,154				226,853
Total	7,246	85,436	408,840	439,382	392,740	453,845	258,767	16,210		2,062,466

Percentage dispatched by region (Based on seasonal forecast - 2010)

■ Dispatch for season so far as a proportion of regional forecast
 ■ 12 month relative regional Forecast



Throughput Australian & NZ avocados by destination state Throughput 1st January 2010 to date = 1,703,120 5.5kg tray eqv



Week 13 contributors - Packhouses

- | | |
|-----------------------------------|-----------------------------|
| Aussie Orchards Growers & Packers | One Harvest |
| Avocados With Altitude Pty Ltd | R & M Waterman |
| Bellview Orchards Pty Ltd | Simpson Farms Pty Ltd |
| Donovan Family Investment Trust | Sunfresh |
| Gunnado Farm | Sunnyspot Packhouse PL |
| Lavers Orchards | SuperPak |
| Natures Fruit Company | Tinaroo Falls Avocado Trust |

Week 13 contributors - Wholesalers

- | | |
|---------------------------------------|--------------------------------|
| Dykes Bros (Melbourne) | The La Manna Group (Adelaide) |
| Etherington (Perth) | The La Manna Group (Brisbane) |
| Kelly's (Melbourne) | The La Manna Group (Melbourne) |
| Murray Bros (Brisbane) | United Fresh (Adelaide) |
| Quality Produce International (Perth) | |

Sales Report including Direct Sales from Packhouses, Wholesale Sales and Stock on Hand at Wholesale Level

	Trays 5.5kg eqv (incl. Mod6 & P84)				Bulk 10Kg Cartons					Pre-Pack Kg					Total (5.5Kg Eqv)			
	Hass	Shepard	Other	Total	Hass	Shepard	Other	Total	5.5Kg Eqv	Hass	Shepard	Other	Total	5.5Kg Eqv	Hass	Shepard	Other	Total
NSW																		
Total supermarket sales																		
Total non supermarket sales	# Data set not displayed because not enough NSW wholesalers contributed data this week																	
Total exports																		
Total sales																		
Total Stock on Hand																		
QLD																		
Total supermarket sales																		
Total non supermarket sales	# Full data set not displayed because not enough QLD wholesalers contributed data this week																	
Total exports																		
Total sales	17,815	11,834		29,649		504		504	916		8,954		8,954	1,628	17,815	14,378		32,193
Total Stock on Hand																		
SA & TAS																		
Total supermarket sales																		
Total non supermarket sales	# Full data set not displayed because not enough SA&TAS wholesalers contributed data this week																	
Total exports																		
Total sales	1,523	6,338		7,861	99	377		476	865		2,460		2,460	447	1,703	7,471		9,174
Total Stock on Hand																		
VIC																		
Total supermarket sales		5,983		5,983							3,780		3,780	687		6,670		6,670
Total non supermarket sales	554	2,123	297	2,974		281		281	511						554	2,634	297	3,485
Total exports																		
Total sales	554	8,105	297	8,956		281		281	511		3,780		3,780	687	554	9,304	297	10,155
Total Stock on Hand	1,581	4,302	80	5,962	30	516		546	993						1,635	5,240	80	6,955
WA																		
Total supermarket sales																		
Total non supermarket sales	# Full data set not displayed because not enough WA wholesalers contributed data this week																	
Total exports																		
Total sales	141	6,551		6,692	110	480		590	1,073						341	7,424		7,765
Total Stock on Hand																		
Total																		
Total supermarket sales	4,985	35,997		40,982		1,633		1,633	2,969		30,126		30,126	5,477	4,985	44,444		49,429
Total non supermarket sales	15,938	4,689	297	20,924	209	1,258		1,467	2,667						16,318	6,976	297	23,591
Total exports																		
Total sales	20,923	44,437	297	65,657	209	2,891		3,100	5,636		30,126		30,126	5,477	21,303	55,171	297	76,771
Total Stock on Hand	16,996	12,513	344	29,853	773	1,152		1,930	3,509						18,402	14,607	353	33,362

Weekly National Sales

