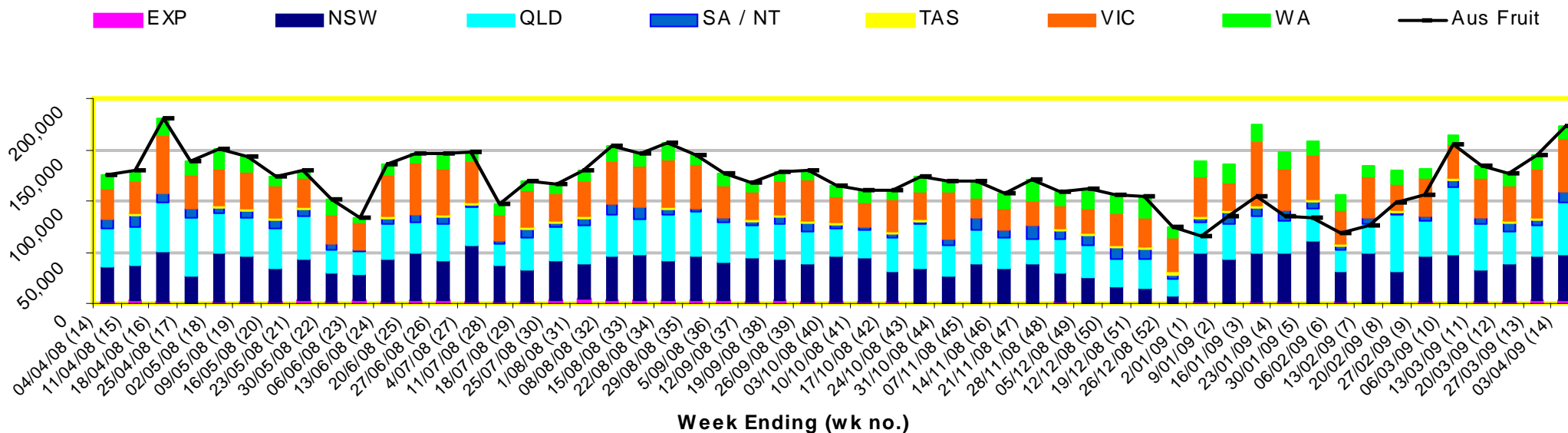


INFOCADO WEEKLY REPORT: 28th March - 3rd April 2009 (Wk 14)

Industry Dispatches 28th March - 3rd April 2009 (Wk 14)

Dest. State	5.5kg	5.5kg	5.5kg	5.5kg	5.5kg	5.5kg	5.5kg	5.5kg	5.5kg	5.5kg	Bulk	P/PK	Other	5.5Kg Eqv Trays
	<16	16	18	20	22	23	25	28	28+	Total	10Kg	Kg	Kg	Total
EXP								1,815	971	2,786				2,786
NSW	1	519	2,633	7,436	2,087	8,322	4,864	5,181		31,043	4,529	31,358		44,979
QLD	8	332	2,468	4,539	927	11,016	11,412	5,729	26	36,457	6,167	15,442	1,860	50,816
SA / NT		7	110	3,033	482	1,613	2,055	594		7,894	1,008	1,584		10,015
TAS				297			668			965				965
VIC	582	1,741	6,099	13,195	1,036	10,012	5,221	2,188	130	40,204	3,808	28,598		52,328
WA	14	73	929	2,101		1,243	4,078	322	31	8,791	1,420	2,852		11,892
Total	605	2,672	12,239	30,601	4,532	32,206	28,298	15,829	1,158	128,140	16,932	79,834	1,860	173,778

Throughput Australian & NZ avocados by destination State Throughput 1st January 2009 to date = 1,998,763 5.5kg tray eqv



Comments from the CEO

North Queensland and Central Queensland are now in full swing with both New Zealand and WA finished.

It's good to see that forecasts for last week were relatively accurate. Most packhouses should have received their individual reports for 2008 indicating how accurate your forecasting was last year. There was room for improvement for most packhouses. We hope these reports will help in making those improvements. We also plan to adapt the weekly forecast forms so that you can see each week how accurate your last week's forecast was. Watch this space!

School Holidays are upon us, holiday dates for different states are as follows: Qld: 14-19 April, NSW: 11-26 April, Vic: 4-19 April, SA: 11-26 April, WA: 11-26 April



Forecast Data (Week 14 - 18)

Variety	Trays - Total	Bulk	P/Pk	All - Total
	5.5Kg Eqv	10Kg	Kg	5.5Kg Eqv

Week 14 —begin 28/03/09

Fuerte	900	60		1,009
Hass	11,345	650	2,000	12,891
Shepard	131,973	7,300	41,800	152,846
Wurtz	1,000	20		1,036
Week Total	145,219	8,030	43,800	167,783

Week 15 —begin 4/04/09

Fuerte	1,350	105		1,541
Hass	9,560	2,800	1,200	14,869
Shepard	121,227	6,846	41,500	141,219
Wurtz	1,000	20		1,036
Week Total	133,137	9,771	42,700	158,666

Week 16 —begin 11/04/09

Fuerte	2,900	115		3,109
Hass	21,400	4,000		28,673
Sharwil	100			100
Shepard	109,406	5,400	41,500	126,769
Wurtz	1,000	20		1,036
Week Total	134,806	9,535	41,500	159,687

Week 17 —begin 18/04/09

Fuerte	900	90		1,064
Hass	14,500	2,946		19,856
Sharwil	500	40		573
Shepard	76,167	1,990	41,000	87,240
Wurtz	1,000	20		1,036
Week Total	93,067	5,086	41,000	109,769

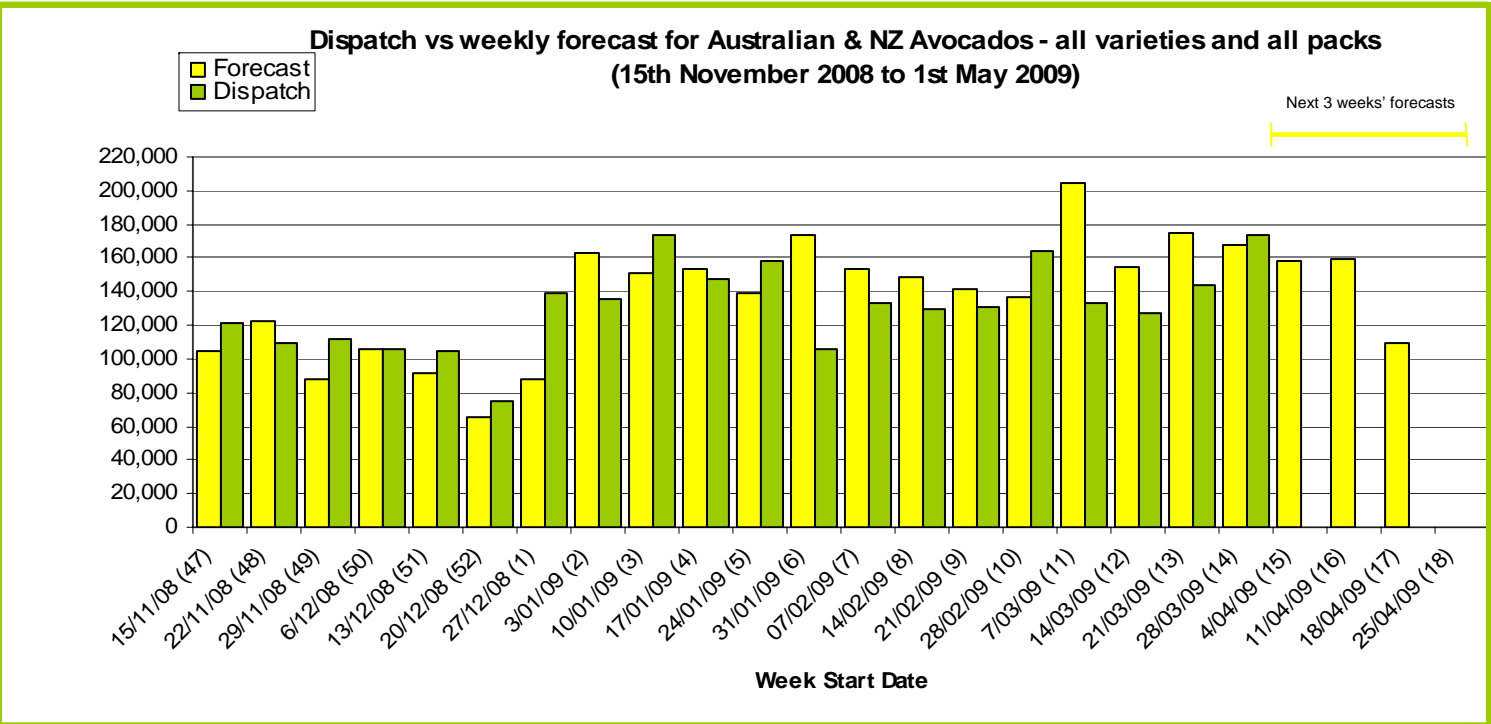
Week 18 —begin 25/04/09

Week Total				

Green shading indicates dispatch data Yellow shading indicates forecast data

Dispatch Data (Week 14 - begin 28/03/09)

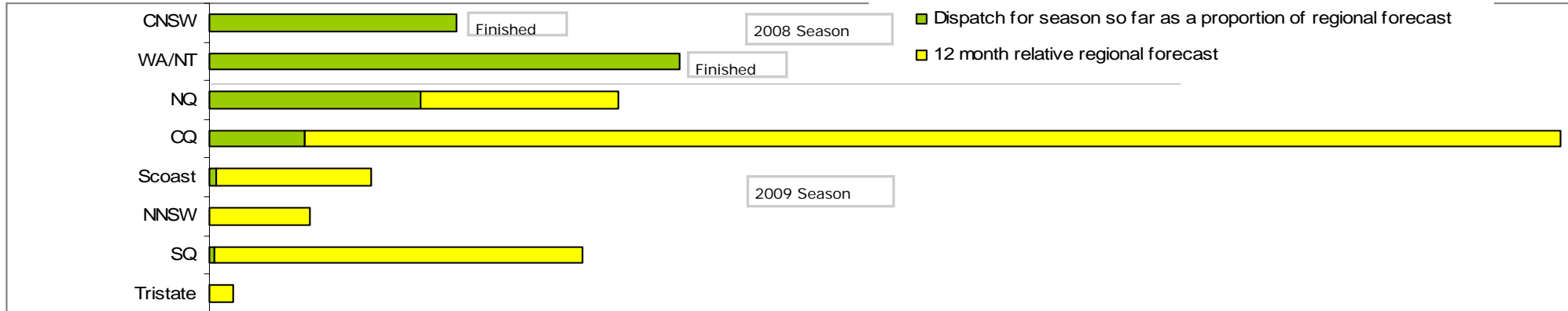
Variety	Trays	Bulk	P/Pk	Other	5.5Kg Eqv
	5.5kg eqv	10Kg	Kg	Kg	Total Trays
Fuerte	1,996	153			2,274
Hass	17,831	1,836	2,500		21,624
Pinkerton	244	3	110		269
Shepard	107,240	14,937	77,224	1,860	148,777
Wurtz	829	3			834
Total	128,140	16,932	79,834	1,860	173,778



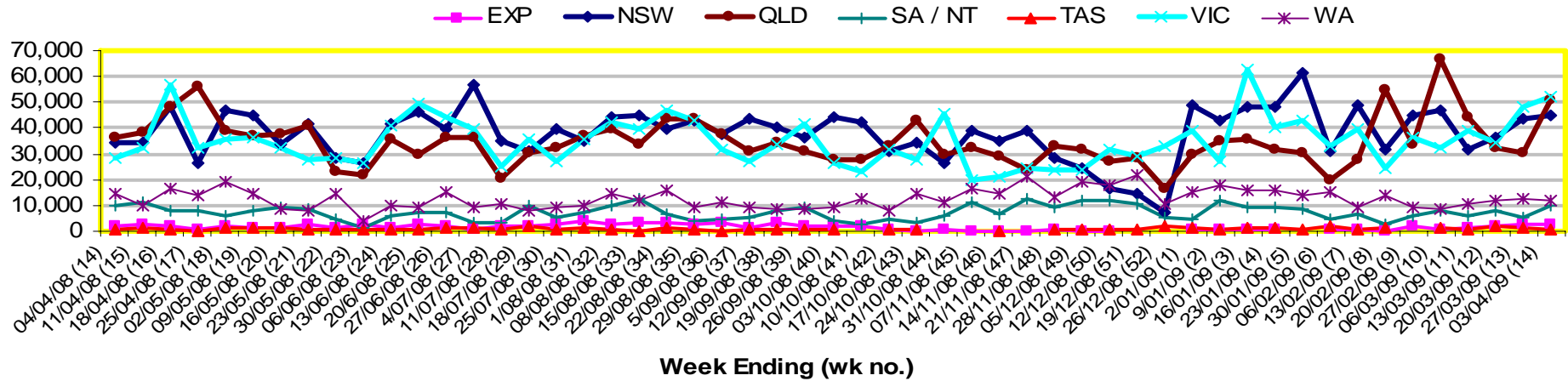
New Zealand Avocado Exports—Forecast v Import Statistics (5.5kg eqv trays) August 2008-April 2009

Export Dest'n	Aug	Sep	Oct	Nov	Dec	Jan	Feb	Mar	Apr	Total to date
NZ Export Forecast		26,730	177,487	319,958	378,497	304,722	122,824	6,282		1,336,500
Australia		7,713	210,274	312,989	345,200	235,527	150,635			1,262,338
USA										
Japan		3,920	21,563	37,519	27,534	9,600				100,135
Total		11,633	231,837	350,508	372,734	245,127	150,635			1,362,657

Percentage dispatched by region (Based on seasonal forecast - 2009)



Throughput Australian & NZ avocados by destination State
Throughput 1st January 2009 to date = 1,998,763 5.5kq tray eqv



Week 14 contributors - Packhouses

Avocados With Altitude Pty Ltd	R & M Waterman
Battistin Orchards	Simpsons Farms Pty Ltd
Donovan Family Investment Trust	Sunfresh
Gunnado Farm	Sunnyspot Packhouse PL
J & K Hummer	SuperPak Group Pty Ltd
Lavers Orchards	Tinaroo Falls Avocado Trust
Natures Fruit Company	Tropicado Avocados
One Harvest	

Week 14 contributors - Wholesalers

Allstates F&V (Perth)	Murray Bros (Brisbane)
Barkers (Melbourne)	Quality Produce International (Perth)
Costa Exchange Trading (Adelaide)	Romeos Marketing (Brisbane)
Costa Exchange Trading (Brisbane)	Sculli & Co Pty Ltd (Melbourne)
Dykes Bros (Melbourne)	The La Manna Group (Adelaide)
Etherington (Perth)	The La Manna Group (Brisbane)
Kelly's (Melbourne)	The La Manna Group (Melbourne)
Mercer Mooney (Perth)	United Fresh (Adelaide)

Sales Report including Direct Sales from Packhouses, Wholesale Sales and Stock on Hand at Wholesale Level

	Trays 5.5kg eqv (incl. Mod6 & P84)				Bulk 10kg Cartons					Pre-Pack Kg					Total (5.5kg eqv)			
	Hass	Shepard	Other	Total	Hass	Shepard	Other	Total	5.5kg eqv	Hass	Shepard	Other	Total	5.5kg eqv	Hass	Shepard	Other	Total
NSW																		
Total supermarket sales																		
Total non supermarket sales	# Full data set not included because not enough Sydney wholesalers contributed data this week																	
Total exports																		
Total sales		13,502		13,502		996		996	1,811		29,678		29,678	5,396		20,709		20,709
Total stock on hand																		
QLD																		
Total supermarket sales	2,791	22,686	4	25,481		1,342	1	1,343	2,442		6,948		6,948	1,263	2,791	26,389	6	29,186
Total non supermarket sales	16,310	2,381		18,691	222	420		642	1,167						16,714	3,145		19,858
Total exports		2,786		2,786												2,786		2,786
Total sales	19,101	27,853	4	46,958	222	1,762	1	1,985	3,609		6,948		6,948	1,263	19,504	32,320	6	51,830
Total stock on hand	21,951	8,783		30,734	197	1,401		1,598	2,905		16		16	3	22,309	11,333		33,643
SA & TAS																		
Total supermarket sales		6,382		6,382		528		528	960		1,584		1,584	288		7,630		7,630
Total non supermarket sales	1,432	2,866		4,298		792		792	1,440						1,432	4,306		5,738
Total exports																		
Total sales	1,432	9,248		10,680		1,320		1,320	2,400		1,584		1,584	288	1,432	11,936		13,368
Total stock on hand #	838	4,967	168	5,973	7	319	100	426	775						851	5,547	350	6,748
VIC																		
Total supermarket sales		18,357		18,357		1,056		1,056	1,920		28,248		28,248	5,136		25,413		25,413
Total non supermarket sales	2,030	7,398	171	9,599	111	1,440	95	1,646	2,993						2,232	10,016	344	12,592
Total exports																		
Total sales	2,030	25,755	171	27,956	111	2,496	95	2,702	4,913		28,248		28,248	5,136	2,232	35,429	344	38,005
Total stock on hand	11,315	4,334	200	15,849	136	187		323	587						11,562	4,674	200	16,436
WA																		
Total supermarket sales	2,377	4,444		6,820		440		440	800		352		352	64	2,377	5,308		7,684
Total non supermarket sales	4,379	190	200	4,769	1,034	219	8	1,261	2,293						6,259	588	215	7,062
Total exports																		
Total sales	6,756	4,634	200	11,589	1,034	659	8	1,701	3,093		352		352	64	8,636	5,896	215	14,746
Total stock on hand #	2,938	814	100	3,852	476	341		817	1,485						3,803	1,434	100	5,337
TOTAL																		
Total supermarket sales	5,167	65,371	4	70,542		4,362	1	4,363	7,933		66,810		66,810	12,147	5,167	85,449	6	90,622
Total non supermarket sales	24,151	12,835	371	37,357	1,367	2,871	103	4,341	7,893						26,636	18,055	558	45,250
Total exports																		
Total sales	29,318	80,992	375	110,685	1,367	7,233	104	8,704	15,825		66,810		66,810	12,147	31,804	106,290	564	138,658
Total stock on hand	37,042	18,898	468	56,408	816	2,248	100	3,164	5,753		16		16	3	38,526	22,988	650	62,164

Weekly National Sales

