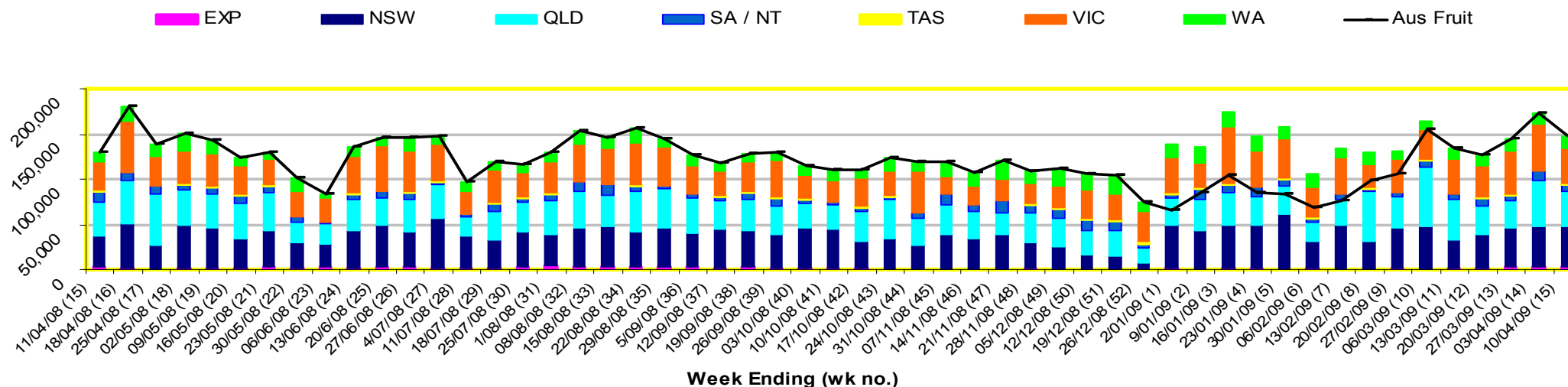


INFOCADO WEEKLY REPORT: 4th - 10th April 2009 (Wk 15)

Industry Dispatches 4th - 10th April 2009 (Wk 15)

Dest. State	5.5kg	5.5kg	5.5kg	5.5kg	5.5kg	5.5kg	5.5kg	5.5kg	5.5kg	5.5kg	Bulk	P/PK	Other	5.5Kg Eqv Trays All
	<16	16	18	20	22	23	25	28	28+	Total	10Kg	Kg	Kg	Total
EXP								1,814	438	2,252	40			2,325
NSW	20	498	3,494	8,807	3,197	6,740	7,458	1,727	119	32,060	6,357	9,602	2,000	45,728
QLD		17	2,429	4,146	1,451	4,115	7,415	3,555	980	24,108	5,014	30,912	711	38,973
SA / NT			39	265	76	524	4,676	608		6,188	288	3,168		7,288
TAS				297			668			965		176		997
VIC	148	1,121	3,675	8,508	883	9,697	3,493	2,308	1	29,834	4,700	3,938		39,095
WA	10	211	539	2,323		2,019	3,524	480	14	9,120	2,065			12,875
Total	178	1,847	10,176	24,346	5,607	23,095	27,234	10,492	1,552	104,527	18,464	47,796	2,711	147,281

Throughput Australian & NZ avocados by destination State Throughput 1st January 2009 to date = 2,146,043 5.5kg tray eqv



Comments from the CEO

- Fruit volumes will be increasing weekly from now on, until at least the end of August.
- Fruit into the markets from this and last week has started to build the stock in hand for most markets.
- Shepard continues to be in shorter supply and this has resulted in very early supplies of Hass being supplies to the market. Hass quality is generally not the best and shriveling of fruit common.
- General fruit quality continues to be extremely variable and will most certainly result in consumer purchasing slow down.
- The four weekly forecasts continues to be poorly supported, if we continue to receive low numbers of contributors for this section we will remove all of page 2 of the report and suspend the four week forecasts in the Infocado System.
- Retails prices need to be reducing as we move into the next few weeks otherwise we will end up with a large build up of fruit in storage.



Forecast Data (Week 15 - 19)

Variety	Trays - Total	Bulk	P/Pk	All - Total
	5.5Kg Eqv	10Kg	Kg	5.5Kg Eqv

Week 15 —begin 4/04/09				
Fuerte	1,350	105		1,541
Hass	9,560	2,800	1,200	14,869
Shepard	121,227	6,846	41,500	141,219
Wurtz	1,000	20		1,036
Week Total	133,137	9,771	42,700	158,666

Week 16 —begin 11/04/09				
Fuerte	2,900	95		3,073
Hass	19,750	3,800		26,659
Sharwil	100			100
Shepard	96,667	5,500	41,500	114,212
Wurtz	1,000	20		1,036
Week Total	120,417	9,415	41,500	145,080

Week 17 —begin 18/04/09				
Fuerte	2,900	80		3,045
Hass	21,200	3,696		27,920
Sharwil	500	40		573
Shepard	44,313	2,890	34,000	55,750
Wurtz	1,000	20		1,036
Week Total	69,913	6,726	34,000	88,324

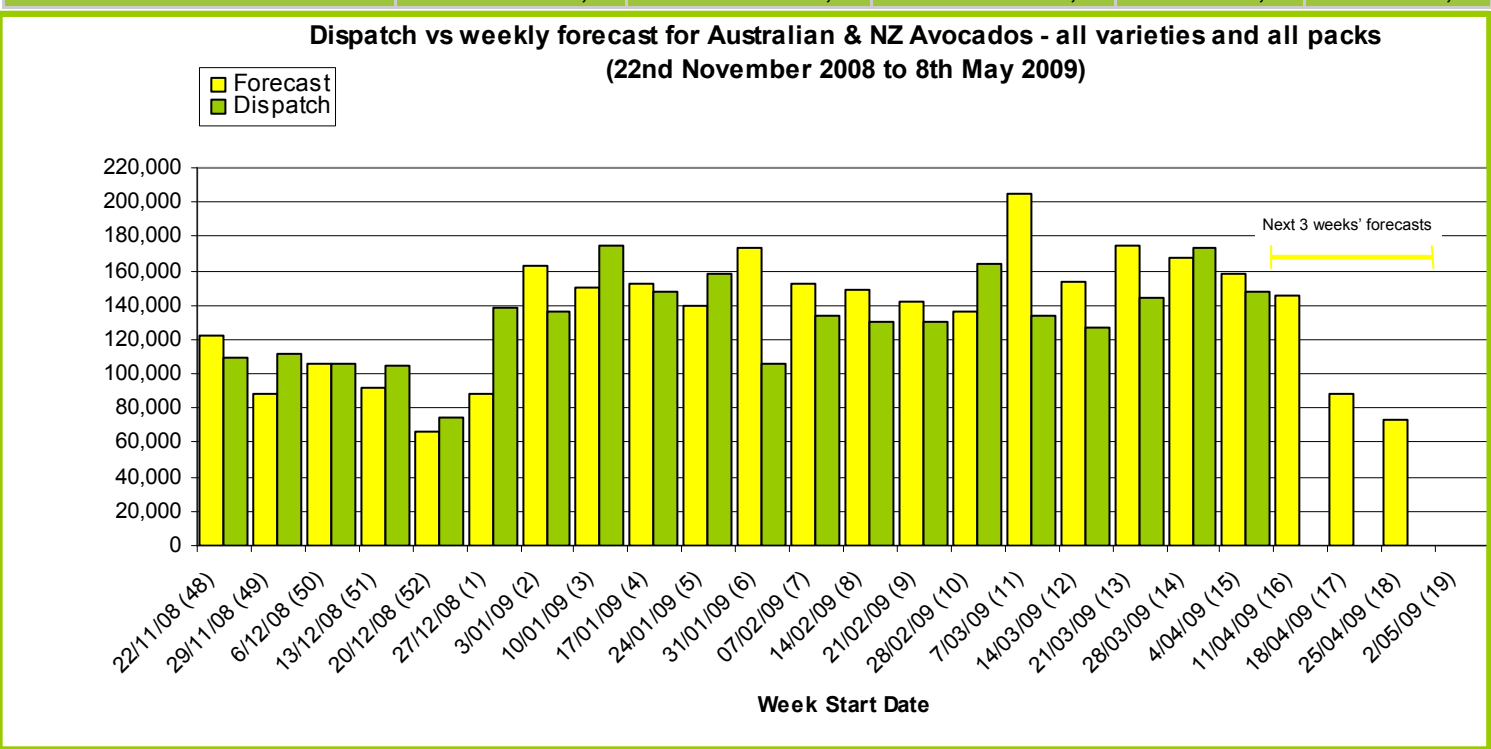
Week 18 —begin 25/04/09				
Fuerte	2,200	50		2,291
Hass	44,218	2,700		49,127
Shepard	16,718	1,000	11,000	20,536
Wurtz	1,500	10		1,518
Week Total	64,636	3,760	11,000	73,472

Week 19 —begin 2/05/09				
Week Total				

Green shading indicates dispatch data Yellow shading indicates forecast data

Dispatch Data (Week 15 - begin 4/04/09)

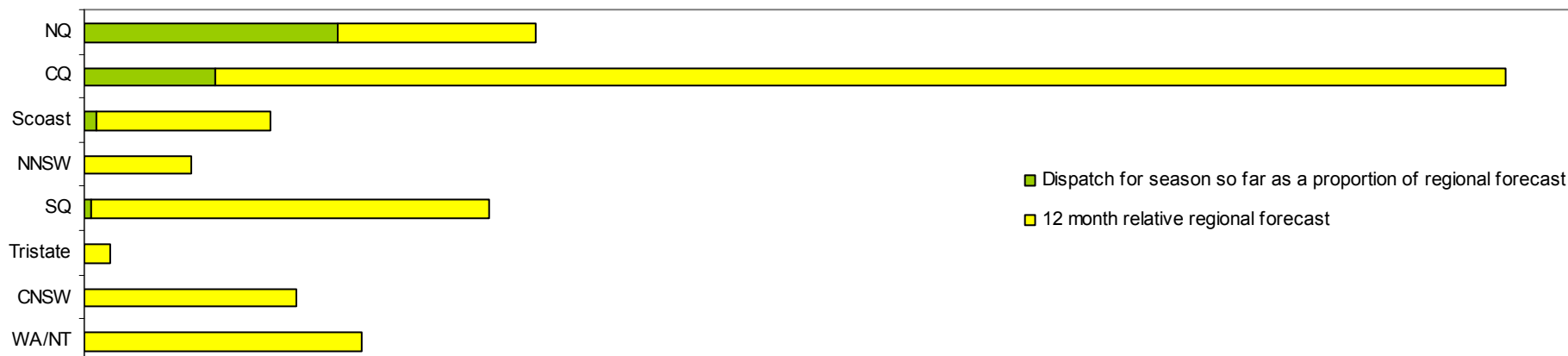
Variety	Trays	Bulk	P/Pk	Other	5.5Kg Eqv
	5.5kg eqv	10Kg	Kg	Kg	Total Trays
Fuerte	2,085	156		175	2,401
Hass	18,889	6,210		2,136	30,568
Pinkerton	711	37			778
Sharwil	170	35			234
Shepard	82,669	12,026	47,796	400	113,297
Total	104,524	18,464	47,796	2,711	147,278



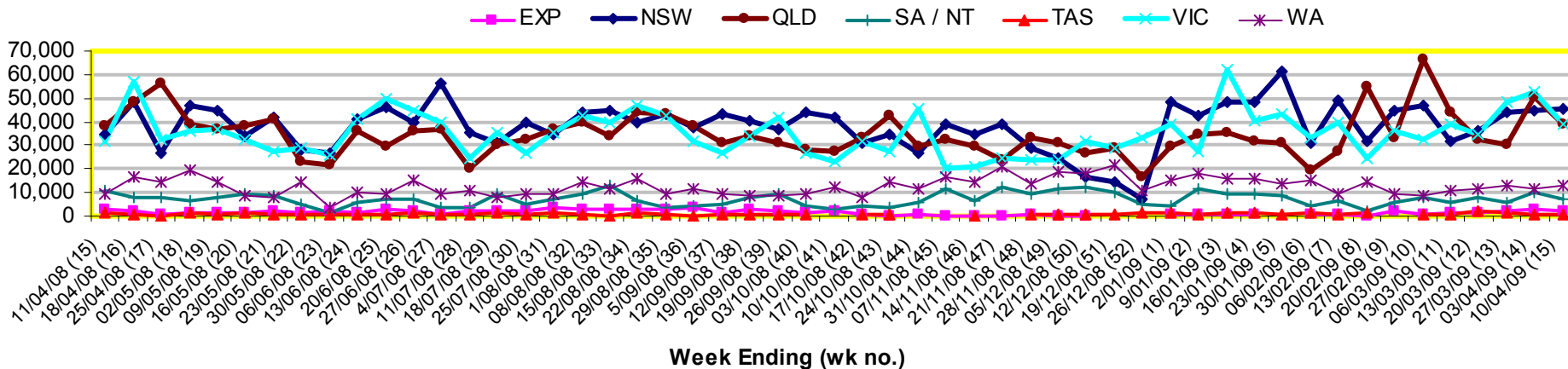
New Zealand Avocado Exports—Forecast v Import Statistics (5.5kg eqv trays) August 2008-April 2009

Export Dest'n	Aug	Sep	Oct	Nov	Dec	Jan	Feb	Mar	Apr	Total to date
NZ Export Forecast		26,730	177,487	319,958	378,497	304,722	122,824	6,282		1,336,500
Australia		7,713	210,274	312,989	345,200	235,527	150,635			1,262,338
USA										
Japan		3,920	21,563	37,519	27,534	9,600				100,135
Total		11,633	231,837	350,508	372,734	245,127	150,635			1,362,657

Percentage dispatched by region 2009 Season (Based on seasonal forecast - 2009)



Throughput Australian & NZ avocados by destination State
Throughput 1st January 2009 to date = 2,146,043 5.5kg tray eqv



Week 15 contributors - Packhouses

- | | |
|---------------------------------|-----------------------------|
| Avocado Ridge | One Harvest |
| Avocados With Altitude Pty Ltd | R & M Waterman |
| Donovan Family Investment Trust | Simpsons Farms Pty Ltd |
| Gunnado Farm | Sunfresh |
| Hilltop Mareeba | Sunnyspot Packhouse PL |
| J & K Hummer | SuperPak Group Pty Ltd |
| Lavers Orchards | The Jonsson Family Trust |
| Mount Hallen Avocados | Tinaroo Falls Avocado Trust |
| Natures Fruit Company | |

Week 15 contributors - Wholesalers

- | | |
|-----------------------------------|---------------------------------------|
| Barkers (Melbourne) | Quality Produce International (Perth) |
| Costa Exchange Trading (Adelaide) | Romeos Marketing (Brisbane) |
| Costa Exchange Trading (Brisbane) | Sculli & Co Pty Ltd (Melbourne) |
| Dykes Bros (Melbourne) | The La Manna Group (Adelaide) |
| Etherington (Perth) | The La Manna Group (Brisbane) |
| Kelly's (Melbourne) | The La Manna Group (Melbourne) |
| Mercer Mooney (Perth) | United Fresh (Adelaide) |
| Murray Bros (Brisbane) | |

Sales Report including Direct Sales from Packhouses, Wholesale Sales and Stock on Hand at Wholesale Level

	Trays 5.5kg eqv (incl. Mod6 & P84)				Bulk 10kg Cartons				Pre-Pack Kg				Total (5.5kg eqv)					
	Hass	Shepard	Other	Total	Hass	Shepard	Other	Total	5.5kg eqv	Hass	Shepard	Other	Total	5.5kg eqv	Hass	Shepard	Other	Total
NSW																		
Total supermarket sales																		
Total non supermarket sales																		
Total exports																		
Total sales	913	14,137		15,050	479	968		1,447	2,631		9,602		9,602	1,746	1,784	17,642	19,427	
Total stock on hand																		
QLD																		
Total supermarket sales	3,058	14,487		17,545		704		704	1,280		23,256		23,256	4,228	3,058	19,996	23,053	
Total non supermarket sales	14,301	2,437		16,738	184	604		788	1,433					14,636	3,535		18,171	
Total exports	152	2,100		2,252		40		40	73					152	2,173		2,325	
Total sales	17,511	19,024		36,535	184	1,348		1,532	2,785		23,256		23,256	4,228	17,845	25,704	43,549	
Total stock on hand	23,704	7,511		31,214	197	1,680		1,877	3,413		24		24	4	24,062	10,570	34,631	
SA & TAS																		
Total supermarket sales	320	5,813		6,133							3,344		3,344	608	320	6,421	6,741	
Total non supermarket sales	1,775	2,403		4,178		573		573	1,042					1,775	3,445		5,220	
Total exports																		
Total sales	2,095	8,216		10,311		573		573	1,042		3,344		3,344	608	2,095	9,865	11,960	
Total stock on hand #	2,775	3,378	168	6,321	295	420	100	815	1,482					3,311	4,142	350	7,803	
VIC																		
Total supermarket sales		13,194		13,194		880		880	1,600		3,938		3,938	716		15,510	15,510	
Total non supermarket sales	1,237	4,519	2,688	8,445	91	1,590	528	2,209	4,016					1,403	7,410	3,648	12,462	
Total exports																		
Total sales	1,237	17,713	2,688	21,639	91	2,470	528	3,089	5,616		3,938		3,938	716	1,403	22,920	27,971	
Total stock on hand	20,603	5,924	314	26,841	983	414		1,397	2,540					22,391	6,676	314	29,381	
WA																		
Total supermarket sales	28	5,020		5,048		352		352	640					28	5,660		5,688	
Total non supermarket sales	4,549	183		4,732	1,258	556		1,814	3,298					6,836	1,194		8,030	
Total exports																		
Total sales	4,577	5,203		9,780	1,258	908		2,166	3,938					6,864	6,854		13,719	
Total stock on hand #	365	1,343		1,708	216	444		660	1,200					758	2,150		2,908	
TOTAL																		
Total supermarket sales	4,319	52,650		56,970	479	2,904		3,383	6,151		40,140		40,140	7,298	5,190	65,229	70,419	
Total non supermarket sales	21,862	9,542	2,688	34,093	1,533	3,323	528	5,384	9,789					24,650	15,584	3,648	43,882	
Total exports	152	2,100		2,252		40		40	73					152	2,173		2,325	
Total sales	26,334	64,293	2,688	93,315	2,012	6,267	528	8,807	16,013		40,140		40,140	7,298	29,992	82,986	116,626	
Total stock on hand	47,447	18,156	482	66,085	1,691	2,958	100	4,749	8,635		24		24	4	50,522	23,538	664	74,724

