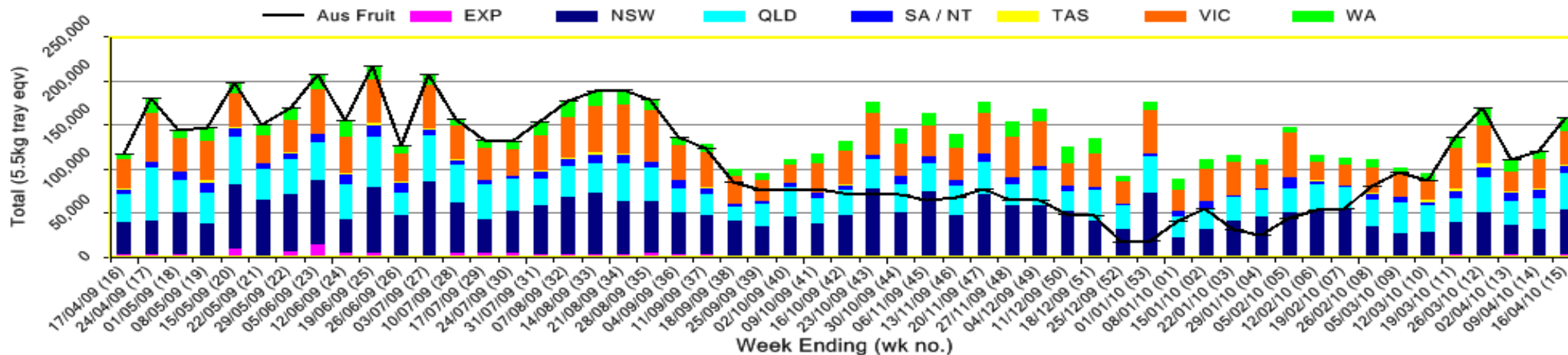


INFOCADO WEEKLY REPORT: 10th April - 16th April 2010 (Wk 15)

Industry Dispatches 10th April - 16th April 2010 (Wk 15)

Dest. State	5.5kg	5.5kg	5.5kg	5.5kg	5.5kg	5.5kg	5.5kg	5.5kg	5.5kg	Trays - Total	Bulk	P/PK	Other	5.5Kg Eqv Trays All
	<16	16	18	20	22	23	25	28	28+	5.5Kg Eqv	10Kg	Kg	Kg	Total
EXP									1,592	936				2,528
NSW	96	681	2,646	5,916	1,484	10,660	10,352	3,454	782		7,669	5,211	450	51,044
QLD	150	358	1,945	3,293	2,809	3,243	15,085	3,579	607		5,482	5,216	1,200	42,202
SA / NT		19	16	29	23	320	4,232	736	38		375	4,654		6,941
TAS							846				384	78		1,558
VIC	532	1,059	3,301	10,340	1,385	8,161	2,813	1,547	715		4,393	1,549		38,122
WA	2	33	222	1,746		3,252	5,907	1,460			1,081			14,587
Total	780	2,150	8,130	21,324	5,701	25,636	39,235	12,368	3,078	118,402	19,384	16,708	1,650	156,984

Throughput Australian & NZ avocados by destination state
Throughput 1st January 2010 to date = 1,979,973 5.5kg tray eqv



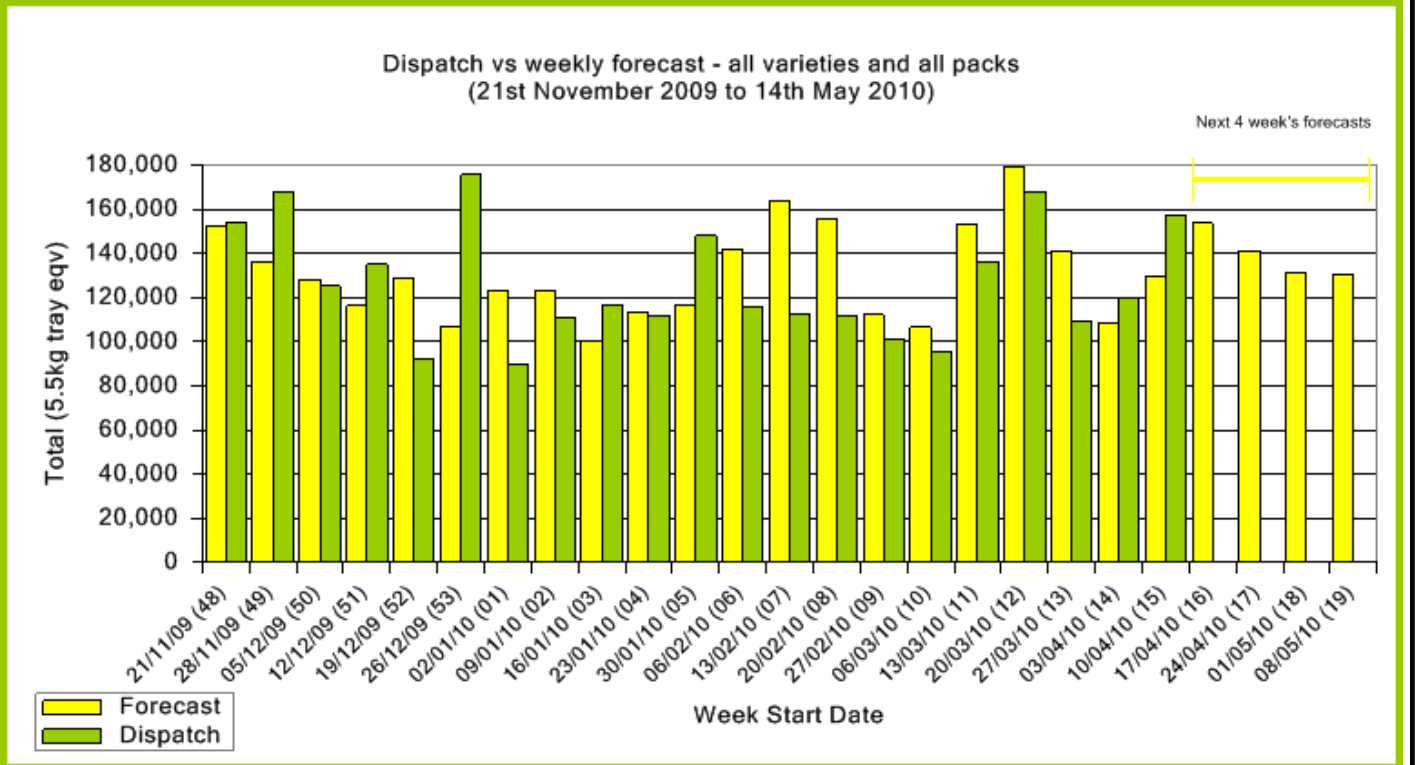
Comments from the CEO

- The forecast shows that there will still be reasonable volumes of Shepard in the market until mid May.
- Dispatches were higher than forecast last week because more hass than was expected was dispatched from North Queensland.
- Retail prices are remaining quite stable with Shepard even being on catalogue special in Melbourne this week.



Forecast Data (Week 15 - 19)					
Variety	Trays - Total	Bulk	P/Pk	Proc	All - Total
	5.5Kg Eqv	10Kg	Kg	Kg	5.5Kg Eqv
Week 15 - begin 10/04/2010					
Fuerte	1,750	260			2,223
Hass	15,865	1,600		200	18,810
Sharwil	750	40			823
Shepard	93,264	4,346	33,200		107,202
Wurtz	1,000				1,000
Week Total	112,629	6,246	33,200	200	130,057
Week 16 - begin 17/04/2010					
Fuerte	2,000	280			2,509
Hass	43,297	5,750	1,000		53,934
Pinkerton	2,000	10			2,018
Sharwil	2,471	20			2,507
Shepard	82,665	3,296	13,600		91,131
Wurtz	1,600	20			1,636
Week Total	134,033	9,376	14,600		153,735
Week 17 - begin 24/04/2010					
Fuerte	1,400	250			1,855
Hass	55,505	6,800	3,000		68,414
Pinkerton	2,000	10			2,018
Sharwil	1,095	40			1,168
Shepard	61,381	1,900	12,100		67,036
Wurtz	650	25			695
Week Total	122,030	9,025	15,100		141,184
Week 18 - begin 01/05/2010					
Fuerte	750	40			823
Hass	65,621	5,826	3,000		76,759
Pinkerton	1,500	10			1,518
Sharwil	495				495
Shepard	47,581	800	11,100		51,054
Wurtz	700	30			755
Week Total	116,646	6,706	14,100		131,403
Week 19 - begin 08/05/2010					
Fuerte	600	30			655
Hass	67,311	5,800	3,000		78,401
Sharwil	618				618
Shepard	46,632	650	11,100		49,832
Wurtz	750	35			814
Week Total	115,911	6,515	14,100		130,320

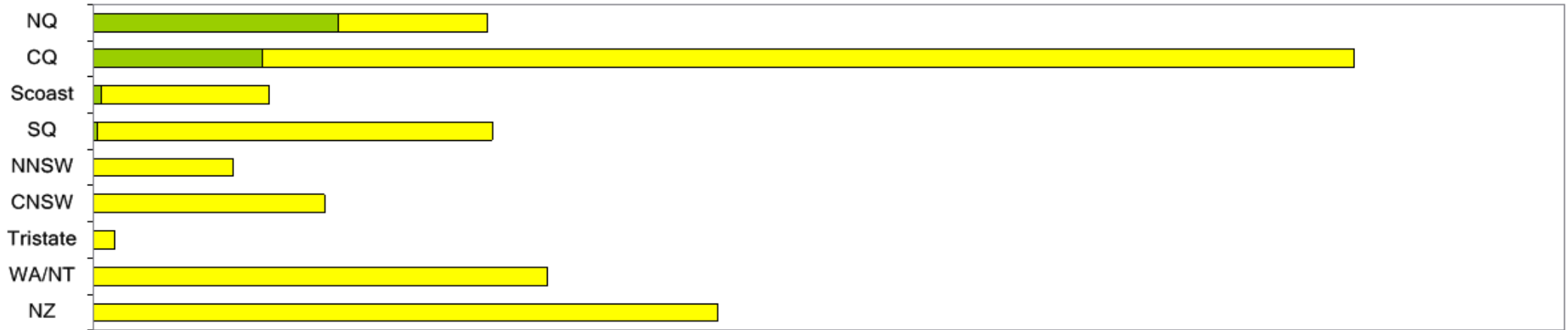
Green shading indicates dispatch data		Yellow shading indicates forecast data			
Dispatch Data (Week 15 - begin 10/04/2010)					
Variety	Trays	Bulk	P/PK	Other	5.5Kg Eqv
	5.5Kg Eqv	10Kg	Kg	Kg	Total Trays
Fuerte	2,524	399			3,249
Hass	27,279	5,764		1,650	38,059
Pinkerton	2,454	154			2,734
Sharwil	1,353	501			2,264
Shepard	84,272	12,554	16,708		110,135
Wurtz	521	12			543
Total	118,403	19,384	16,708	1,650	156,985



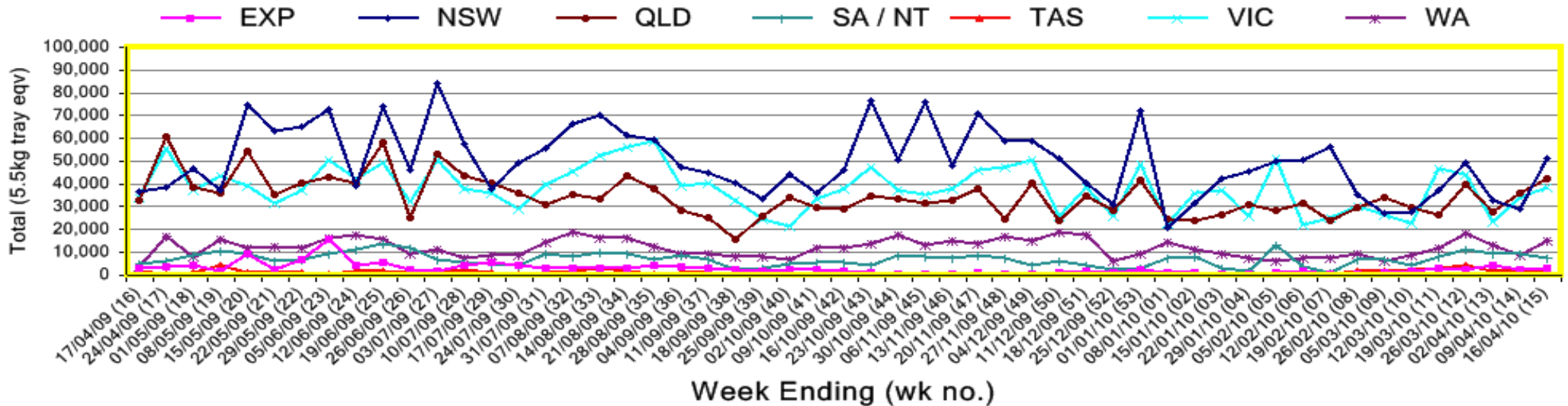
New Zealand Avocado Exports—Forecast v Import Statistics (5.5kg eqv trays) August 2009-April 2010										
Export Dest'n	Aug	Sep	Oct	Nov	Dec	Jan	Feb	Mar	Apr	Total to date
NZ Export to Australia Forecast		5,055	314,324	314,516	354,135	328,074	344,756	133,464	5,641	1,799,965
Australia		41,599	321,706	363,357	347,496	439,691	258,767	16,210		1,788,826
USA	2,727	15,090	22,787	6,183						46,787
Japan	4,519	28,746	64,348	69,842	45,244	14,154				226,853
Total	7,246	85,436	408,840	439,382	392,740	453,845	258,767	16,210		2,062,466

Percentage dispatched by region (Based on seasonal forecast - 2010)

Dispatch for season so far as a proportion of regional forecast 12 month relative regional Forecast



Throughput Australian & NZ avocados by destination state Throughput 1st January 2010 to date = 1,979,973 5.5kg tray eqv



Week 15 contributors - Packhouses

Aussie Orchards Growers & Packers
Avocados With Altitude Pty Ltd
Donovan Family Investment Trust
Goodlife Orchards
Hilltop Mareeba
ID & AM Leighton
J & K Hummer
Lavers Orchards
Natures Fruit Company

One Harvest
R & M Waterman
Simpson Farms Pty Ltd
Sunfresh
Sunnyspot Packhouse PL
SuperPak
Tinaroo Falls Avocado Trust
Tropicado Avocados

Week 15 contributors - Wholesalers

Dykes Bros (Melbourne)
Etherington (Perth)
Kelly's (Melbourne)
Murray Bros (Brisbane)
Sculli & Co Pty Ltd (Melbourne)

The La Manna Group (Adelaide)
The La Manna Group (Brisbane)
The La Manna Group (Melbourne)
United Fresh (Adelaide)

Sales Report including Direct Sales from Packhouses, Wholesale Sales and Stock on Hand at Wholesale Level

	Trays 5.5kg eqv (incl. Mod6 & P84)				Bulk 10Kg Cartons					Pre-Pack Kg					Total (5.5Kg Eqv)			
	Hass	Shepard	Other	Total	Hass	Shepard	Other	Total	5.5Kg Eqv	Hass	Shepard	Other	Total	5.5Kg Eqv	Hass	Shepard	Other	Total
NSW																		
Total supermarket sales																		
Total non supermarket sales	# Data set not displayed because not enough NSW wholesalers contributed data this week																	
Total exports																		
Total sales																		
Total Stock on Hand																		
QLD																		
Total supermarket sales																		
Total non supermarket sales	# Full data set not displayed because not enough QLD wholesalers contributed data this week																	
Total exports																		
Total sales	18,110	11,431		29,541		70		70	127		5,216		5,216	948	18,110	12,507		30,617
Total Stock on Hand																		
SA & TAS																		
Total supermarket sales																		
Total non supermarket sales	# Full data set not displayed because not enough SA&TAS wholesalers contributed data this week																	
Total exports																		
Total sales	1,215	5,914	101	7,230	73	701	26	800	1,455		4,732		4,732	860	1,348	8,049	148	9,545
Total Stock on Hand																		
VIC																		
Total supermarket sales		3,389	1,171	4,560		138	164	302	549		1,549		1,549	282		3,922	1,469	5,391
Total non supermarket sales	1,602	4,615	663	6,880	190	657	53	900	1,636						1,948	5,810	759	8,517
Total exports																		
Total sales	1,602	8,004	1,834	11,441	190	795	217	1,202	2,185		1,549		1,549	282	1,948	9,732	2,229	13,908
Total Stock on Hand	3,264	2,682	388	6,335	2	180	6	188	342						3,268	3,010	399	6,676
WA																		
Total supermarket sales																		
Total non supermarket sales	# Full data set not displayed because not enough WA wholesalers contributed data this week																	
Total exports																		
Total sales		6,166		6,166	13			13	24						24	6,166		6,190
Total Stock on Hand																		
Total																		
Total supermarket sales	3,562	40,693	1,467	45,722	43	2,908	195	3,146	5,720		16,708		16,708	3,038	3,640	49,018	1,822	54,480
Total non supermarket sales	17,841	6,648	663	25,152	276	1,033	53	1,362	2,476						18,343	8,526	759	27,629
Total exports																		
Total sales	21,403	49,869	2,130	73,402	319	3,941	248	4,508	8,196		16,708		16,708	3,038	21,983	60,072	2,581	84,636
Total Stock on Hand	18,507	10,533	652	29,693	847	400	11	1,258	2,287						20,047	11,261	672	31,980

