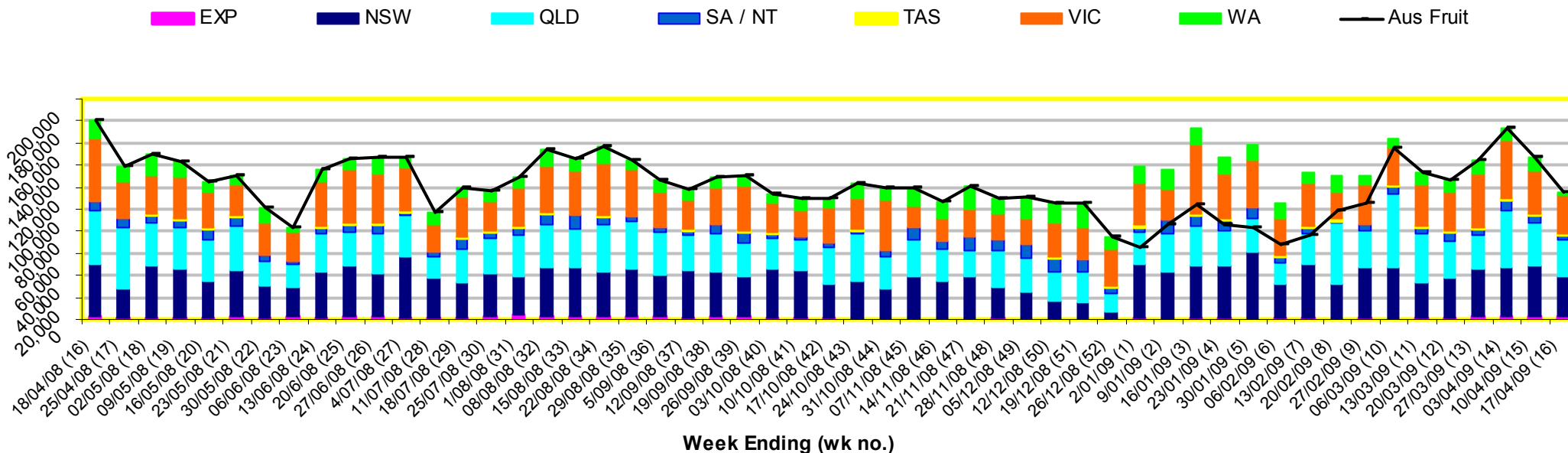


# INFOCADO WEEKLY REPORT: 11th - 17th April 2009 (Wk 16)

## Industry Dispatches 11th - 17th April 2009 (Wk 16)

Dest. State	5.5kg										Bulk 10Kg	P/PK Kg	Other Kg	5.5Kg Eqv Trays All Total	
	<16	16	18	20	22	23	25	28	28+	Total					
EXP								2,016	632		2,648	144			2,910
NSW	504	1,001	4,206	6,980	2,219	4,422	2,357	3,278	263		25,230	4,727	13,794	960	36,508
QLD	117	476	3,069	5,022	304	8,140	6,198	3,618	240		27,184	1,883	8,328	1,170	32,335
SA / NT				152		555	1,823	888			3,418	288	5,412		4,926
TAS							1,046	176			1,222				1,222
VIC	844	1,316	3,068	8,788	1,141	5,311	3,938	1,750	428		26,584	2,088	19,745	285	34,022
WA	20	52	92	488		2,478	149	247	8		3,534	63			3,649
<b>Total</b>	<b>1,485</b>	<b>2,845</b>	<b>10,435</b>	<b>21,430</b>	<b>3,664</b>	<b>20,906</b>	<b>15,511</b>	<b>11,973</b>	<b>1,571</b>		<b>89,820</b>	<b>9,193</b>	<b>47,279</b>	<b>2,415</b>	<b>115,570</b>

### Throughput Australian & NZ avocados by destination State Throughput 1st January 2009 to date = 2,261,611 5.5kg tray eqv



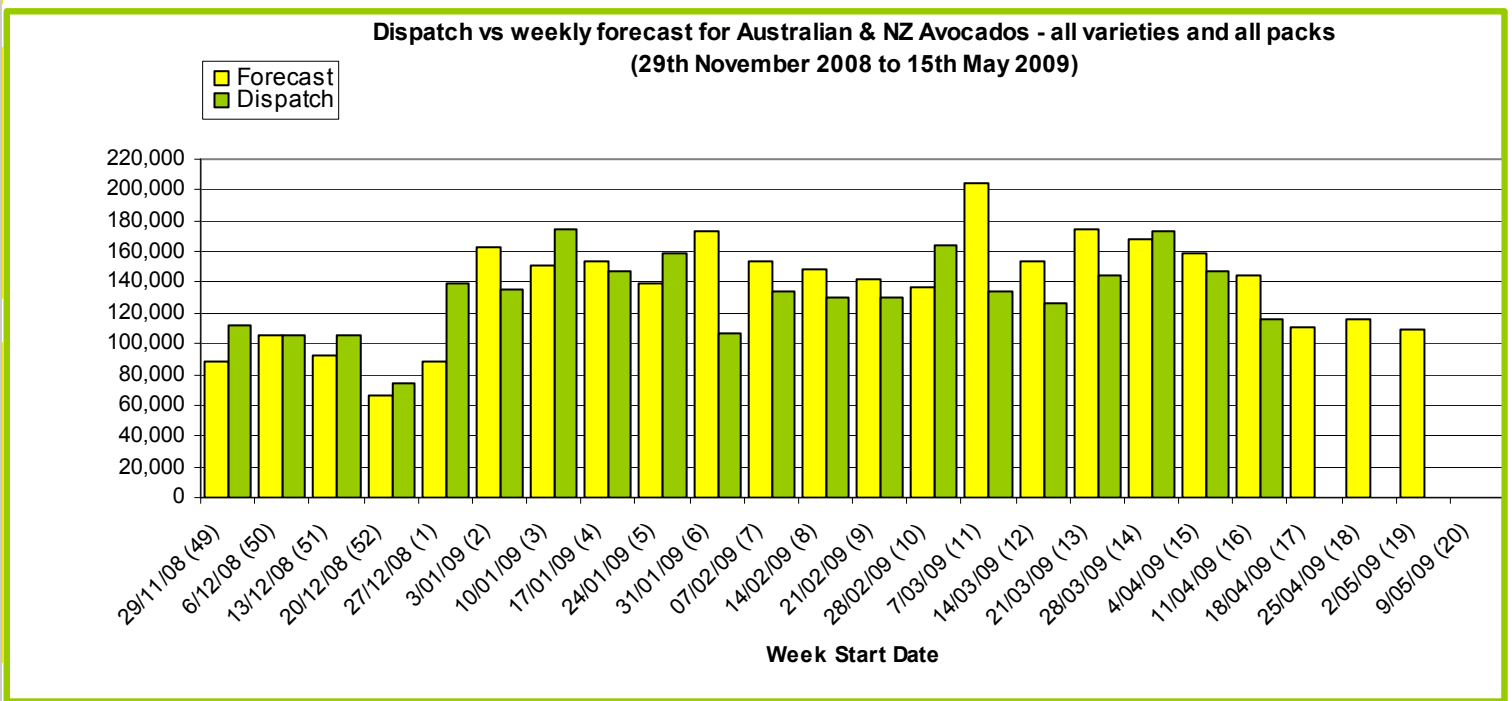
### Comments from the CEO

- Dispatches were down on forecasts last week. This may be as a result of the Easter public holidays and also wet weather in Queensland. It is important that packhouses take upcoming public holidays into account when submitting forecasts.
- A report will be sent out later this week presenting monthly fruit maturity results as measured by Dry Matter content including Hass fruit sampled this week.



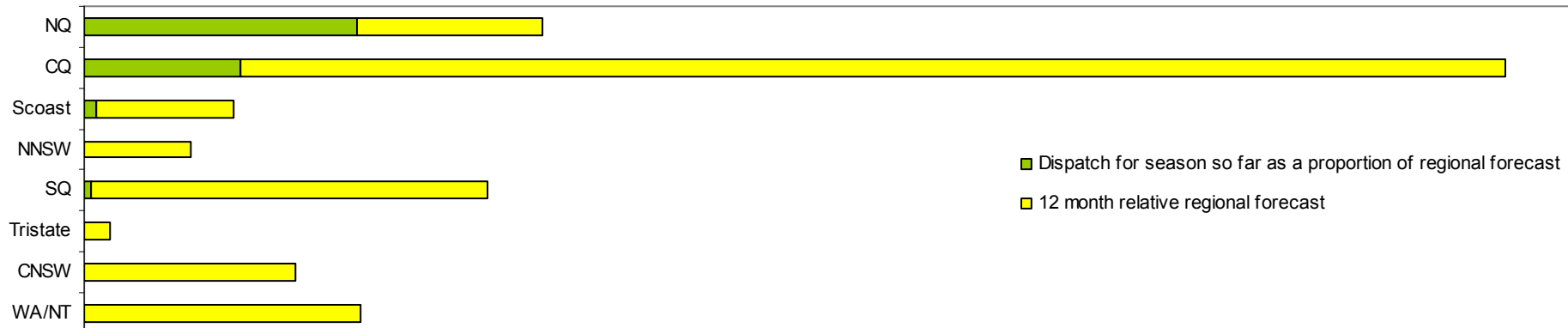
Forecast Data (Week 16 - 20)				
Variety	Trays - Total	Bulk	P/Pk	All - Total
	5.5Kg Eqv	10Kg	Kg	5.5Kg Eqv
Week 16 —begin 11/04/09				
Fuerte	2,900	95		3,073
Hass	19,750	3,800		26,659
Sharwil	100			100
Shepard	96,667	5,500	41,500	114,212
Wurtz	1,000	20		1,036
<b>Week Total</b>	<b>120,417</b>	<b>9,415</b>	<b>41,500</b>	<b>145,080</b>
Week 17 —begin 18/04/09				
Fuerte	2,075	105		2,266
Hass	44,000	4,780	22,000	56,691
Sharwil	900	90		1,064
Shepard	39,313	2,190	34,000	49,477
Wurtz	1,500	20		1,536
<b>Week Total</b>	<b>87,788</b>	<b>7,185</b>	<b>56,000</b>	<b>111,034</b>
Week 18 —begin 25/04/09				
Fuerte	4,725	315		5,298
Hass	72,785	4,000	22,000	84,058
Pinkerton	3,500	30		3,555
Sharwil	500	60		609
Shepard	17,018	1,000	11,000	20,836
Wurtz	1,500	10		1,518
<b>Week Total</b>	<b>100,029</b>	<b>5,415</b>	<b>33,000</b>	<b>115,874</b>
Week 19 —begin 2/05/09				
Fuerte	2,625	205		2,998
Hass	89,804	3,200	22,000	99,622
Sharwil	900	160		1,191
Shepard	2,897	500		3,806
Wurtz	1,200	15		1,227
<b>Week Total</b>	<b>97,425</b>	<b>4,080</b>	<b>22,000</b>	<b>108,843</b>
Week 20 —begin 9/05/09				
<b>Week Total</b>				

Green shading indicates dispatch data						Yellow shading indicates forecast data					
Dispatch Data (Week 16 - begin 11/04/09)											
Variety	Trays		Bulk		P/Pk		Other		5.5Kg Eqv		
	5.5kg eqv		10Kg		Kg		Kg		Total Trays		
Fuerte	4,608		267				84		5,108		
Hass	20,002		3,984				1,960		27,602		
Pinkerton	3,690		191				86		4,053		
Sharwil	1,010		110						1,210		
Shepard	59,934		4,636		47,279		285		77,011		
Wurtz	574		5						583		
<b>Total</b>	<b>89,818</b>		<b>9,193</b>		<b>47,279</b>		<b>2,415</b>		<b>115,568</b>		

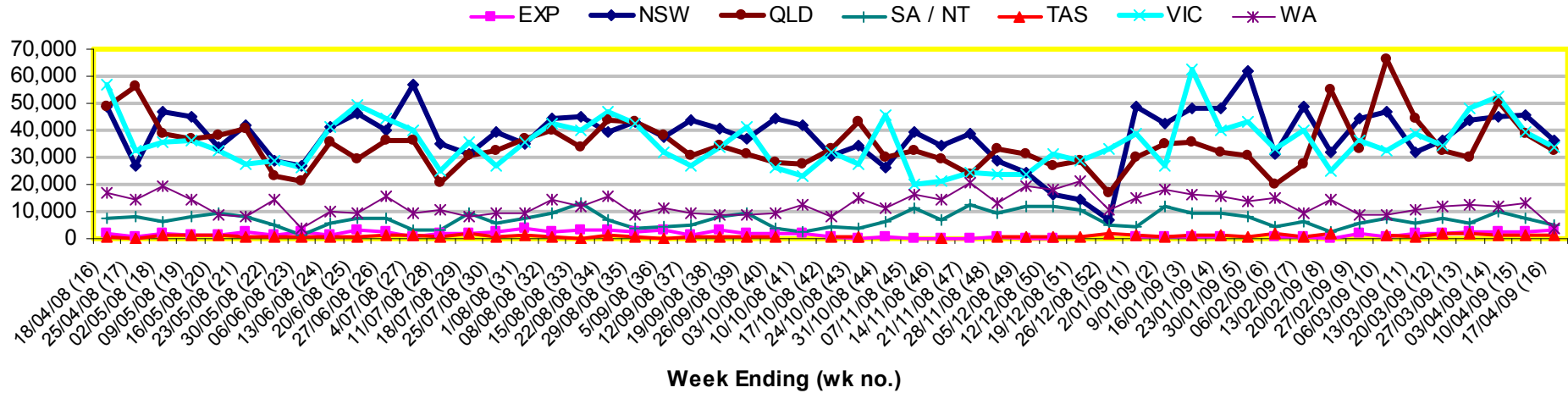


New Zealand Avocado Exports—Forecast v Import Statistics (5.5kg eqv trays) August 2008-April 2009											
Export Dest'n	Aug	Sep	Oct	Nov	Dec	Jan	Feb	Mar	Apr	Total to date	
<b>NZ Export Forecast</b>		26,730	177,487	319,958	378,497	304,722	122,824	6,282		<b>1,336,500</b>	
<b>Australia</b>		7,713	210,274	312,989	345,200	235,527	150,635			<b>1,262,338</b>	
<b>USA</b>											
<b>Japan</b>		3,920	21,563	37,519	27,534	9,600				<b>100,135</b>	
<b>Total</b>		<b>11,633</b>	<b>231,837</b>	<b>350,508</b>	<b>372,734</b>	<b>245,127</b>	<b>150,635</b>			<b>1,362,657</b>	

Percentage dispatched by region 2009 Season (Based on seasonal forecast - 2009)



Throughput Australian & NZ avocados by destination State  
Throughput 1st January 2009 to date = 2,261,611 5.5kg tray eqv



**Week 16 contributors - Packhouses**

- |                                 |                                |
|---------------------------------|--------------------------------|
| Avocados With Altitude Pty Ltd  | Simpsons Farms Pty Ltd         |
| Donovan Family Investment Trust | Summerland House With No Steps |
| Gunnado Farm                    | Sunfresh                       |
| J & K Hummer                    | Sunnyspot Packhouse PL         |
| Jirel Holdings                  | SuperPak Group Pty Ltd         |
| Lavers Orchards                 | The Jonsson Family Trust       |
| Natures Fruit Company           | Tinaroo Falls Avocado Trust    |
| One Harvest                     | Tropicado Avocados             |
| R & M Waterman                  |                                |

**Week 16 contributors - Wholesalers**

- |                                   |                                       |
|-----------------------------------|---------------------------------------|
| Barkers (Melbourne)               | Quality Produce International (Perth) |
| Costa Exchange Trading (Adelaide) | Sculli & Co Pty Ltd (Melbourne)       |
| Costa Exchange Trading (Brisbane) | The La Manna Group (Adelaide)         |
| Dykes Bros (Melbourne)            | The La Manna Group (Brisbane)         |
| Etherington (Perth)               | The La Manna Group (Melbourne)        |
| Mercer Mooney (Perth)             | United Fresh (Adelaide)               |
| Murray Bros (Brisbane)            |                                       |

### Sales Report including Direct Sales from Packhouses, Wholesale Sales and Stock on Hand at Wholesale Level

	Trays 5.5kg eqv (incl. Mod6 & P84)				Bulk 10kg Cartons					Pre-Pack Kg					Total (5.5kg eqv)			
	Hass	Shepard	Other	Total	Hass	Shepard	Other	Total	5.5kg eqv	Hass	Shepard	Other	Total	5.5kg eqv	Hass	Shepard	Other	Total
<b>NSW</b>																		
Total supermarket sales																		
Total non supermarket sales	# Full data set not included because not enough Sydney wholesalers contributed data this week																	
Total exports																		
Total sales	148	6,312		6,460							13,794		13,794	2,508	148	8,820		8,968
Total stock on hand																		
<b>QLD</b>																		
Total supermarket sales	6,167	14,777	2	20,946	2			2	4		4,528		4,528	823	6,171	15,600	2	21,773
Total non supermarket sales	11,821	2,639		14,460	29	884		913	1,660						11,874	4,246		16,120
Total exports		2,648		2,648	96	48		144	262						175	2,735		2,910
Total sales	17,988	20,064	2	38,054	127	932		1,059	1,925		4,528		4,528	823	18,219	22,582	2	40,803
Total stock on hand	17,181	2,064		19,245	120	932		1,052	1,913		32		32	6	17,399	3,764		21,164
<b>SA &amp; TAS</b>																		
Total supermarket sales		3,645		3,645	36			36	65						65	3,645		3,711
Total non supermarket sales	2,164	1,359		3,523	310	351		661	1,202						2,728	1,997		4,725
Total exports																		
Total sales	2,164	5,004		7,168	346	351		697	1,267						2,793	5,643		8,436
Total stock on hand #	7,077	2,479	168	9,724	381	165	100	646	1,175						7,770	2,779	350	10,898
<b>VIC</b>																		
Total supermarket sales		12,321		12,321												12,321		12,321
Total non supermarket sales	2,585	4,336	1,163	8,085	564	334	352	1,250	2,273						3,611	4,944	1,803	10,358
Total exports																		
Total sales	2,585	16,658	1,163	20,406	564	334	352	1,250	2,273						3,611	17,265	1,803	22,679
Total stock on hand	21,613	3,567	112	25,292	1,458	761		2,219	4,035						24,264	4,950	112	29,327
<b>WA</b>																		
Total supermarket sales	16	2,660		2,676											16	2,660		2,676
Total non supermarket sales	344	1,442		1,786	483	353		836	1,520						1,222	2,084		3,306
Total exports																		
Total sales	360	4,102		4,462	483	353		836	1,520						1,238	4,744		5,982
Total stock on hand #	701	1,630		2,331	1,360	438		1,798	3,269						3,174	2,427		5,601
<b>TOTAL</b>																		
Total supermarket sales	6,331	39,715	2	46,049	38			38	69		18,322		18,322	3,331	6,401	43,047	2	49,449
Total non supermarket sales	16,914	9,776	1,163	27,854	1,386	1,922	352	3,660	6,655						19,434	13,271	1,803	34,508
Total exports																		
Total sales	23,246	52,140	1,165	76,551	1,520	1,970	352	3,842	6,985		18,322		18,322	3,331	26,010	59,053	1,805	86,867
Total stock on hand	46,572	9,740	280	56,592	3,319	2,296	100	5,715	10,391		32		32	6	52,607	13,920	462	66,989

**Weekly National Sales**

