



# INFOCADO WEEKLY REPORT

10th - 16th May 2008 (Wk 20)

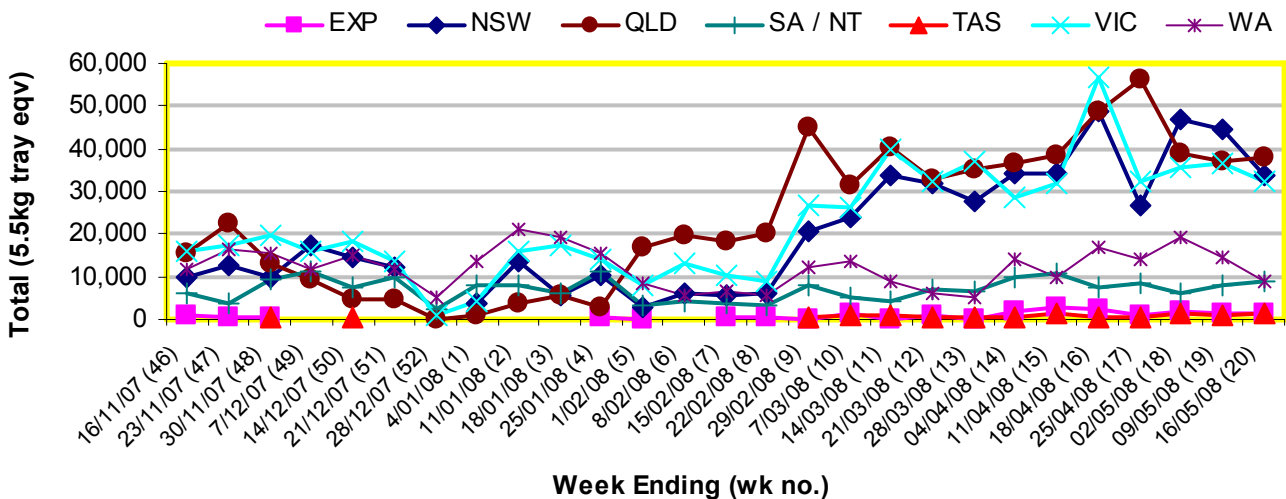
Green shading indicates dispatch data

Yellow shading indicates forecast data

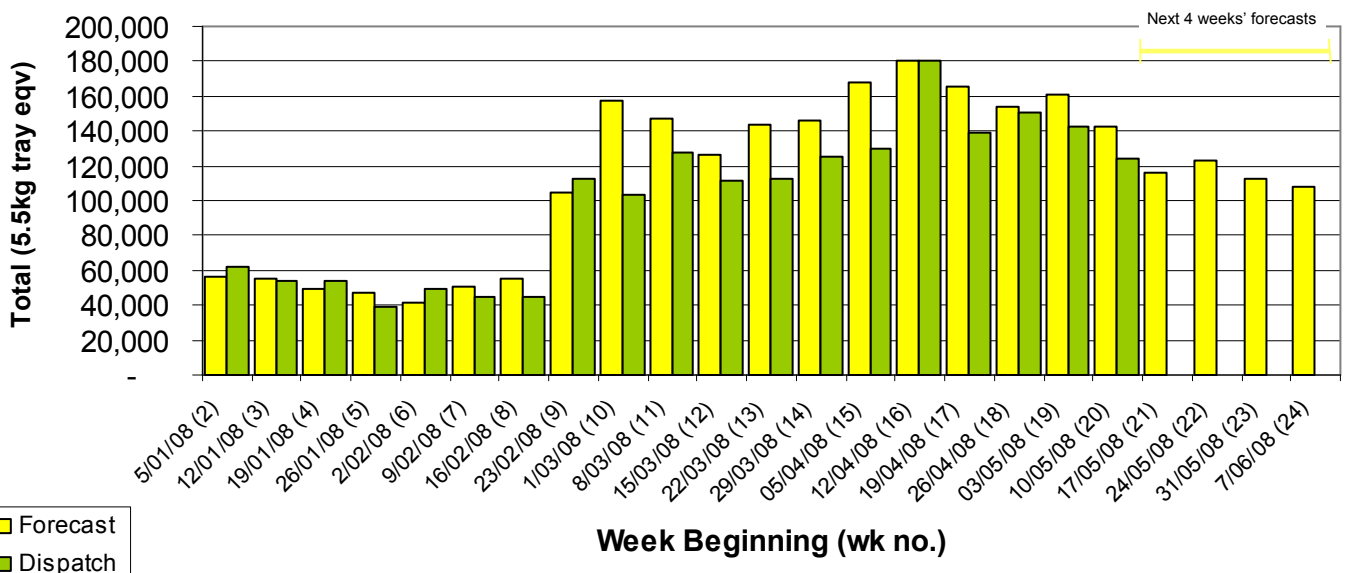
## Industry Dispatches 10th - 16th May 2008 (Wk 20)

Dest. State	5.5kg	5.5kg	5.5kg	5.5kg	5.5kg	5.5kg	5.5kg	5.5kg	5.5kg	5.5kg	Bulk	P/PK	Oil	5.5Kg Eqv Trays All
	<16	16	18	20	22	23	25	28	28+	Total	10Kg	Kg	Kg	Total
EXP				10				645	495	1,150	67			1,272
NSW	487	1,046	3,144	9,066	1,782	5,906	3,691	2,001	103	27,226	3,411	896		33,591
QLD	1,348	953	1,290	3,125	364	9,240	6,640	4,293	227	27,480	4,897	352	8,100	37,921
SA / NT		98	515	179	60	2,217	4,137	714	144	8,064	560			9,082
TAS							1,335			1,335				1,335
VIC	72	3,097	7,414	4,779	416	5,469	2,369	1,262	181	25,059	3,955	1,038		32,439
WA			183	462	68	3,178	2,110	288		6,289	1,328	875		8,863
<b>Total</b>	<b>1,907</b>	<b>5,194</b>	<b>12,546</b>	<b>17,621</b>	<b>2,690</b>	<b>26,010</b>	<b>20,282</b>	<b>9,203</b>	<b>1,150</b>	<b>96,603</b>	<b>14,218</b>	<b>3,161</b>	<b>8,100</b>	<b>124,502</b>

## Throughput Australian avocados by destination State Throughput 1st January 2008 to date = 1,938,850 5.5kg tray eqv



## Dispatch vs weekly forecast for Australian Avocados - all varieties and all packs (5th January 2008 to 13th July 2008)



### Major Capital City Weather Report – week ahead

City	Tue	Wed	Thu	Fri	Public Hols	School Holidays
Brisbane	23°	24°	23°	23°	9th June - Queens B'day	28th Jun - 13th Jul
Melbourne	17°	15°	16°	16°	9th June - Queens B'day	28th Jun - 13th Jul
Perth	22°	23°	19°	20°	2nd June - Foundation Day	5th—20th Jul
Sydney	21°	19°	17°	18°	9th June - Queens B'day	5th—20th Jul

#### Forecast Data (Week 20-24)

Variety	Trays - Total	Bulk	P/Pk	Oil	Other	All - Total
	5.5Kg Eqv	10Kg	Kg	Kg	Kg	5.5Kg Eqv
Week 20 - begin 10/05/08						
Fuerte	450	103				637
Hass	100,056	7,812	21,300	50,000		127,224
Pinkerton	300	820				1,791
Sharwil	1,770	50	1,000			2,043
Shepard	850	320	2,610			1,907
Wurtz	7,200	900				8,836
<b>Week Total</b>	<b>110,626</b>	<b>10,005</b>	<b>24,910</b>	<b>50,000</b>		<b>142,437</b>
Week 21 - begin 17/05/08						
Fuerte	1,500	200				1,864
Hass	86,197	5,550	23,000	9,500		102,197
Pinkerton	425	840				1,952
Sharwil	2,270	20	1,000			2,488
Shepard	80	10	2,610			573
Wurtz	5,600	830				7,109
<b>Week Total</b>	<b>96,072</b>	<b>7,450</b>	<b>26,610</b>	<b>9,500</b>		<b>116,182</b>
Week 22 - begin 24/05/08						
Fuerte	1,300	100				1,482
Hass	94,336	6,060	20,500	9,500		110,808
Pinkerton	344	840				1,871
Sharwil	1,135	30	2,000			1,554
Shepard			2,610			475
Wurtz	5,600	830				7,109
<b>Week Total</b>	<b>102,715</b>	<b>7,860</b>	<b>25,110</b>	<b>9,500</b>		<b>123,298</b>
Week 23 - begin 31/05/08						
Hass	89,482	6,510	20,000	9,500		106,681
Sharwil	85	30	2,000			504
Shepard			2,610			475
Wurtz	5,150					5,150
<b>Week Total</b>	<b>94,717</b>	<b>6,540</b>	<b>24,610</b>	<b>9,500</b>		<b>112,810</b>
Week 24 - begin 7/06/08						
Hass	90,919	5,460		9,500		102,573
Sharwil	85	30				140
Wurtz	5,000					5,000
<b>Week Total</b>	<b>96,004</b>	<b>5,490</b>	<b>0</b>	<b>9,500</b>		<b>107,713</b>

#### Dispatch Data (Week 20 - begin 10/05/08)

Variety	Trays	Bulk	P/Pk	Oil	5.5Kg Eqv
	5.5kg eqv	10Kg	Kg	Kg	Total Trays
Fuerte	1,856	155			2,138
Hass	88,301	12,367	3,161	8,100	112,834
Pinkerton	288	735			1,624
Sharwil	1,417	39			1,488
Shepard	590				590
Wurtz	4,150	922			5,826
<b>Total</b>	<b>96,602</b>	<b>14,218</b>	<b>3,161</b>	<b>8,100</b>	<b>124,501</b>

#### Week 20 contributors

Avocados With Altitude  
 Balmoral Orchard  
 BT & RG Pegg  
 Coastal Avocados  
 Donovan Avocados  
 G & C Christensen  
 G & J Krenske  
 Lavers Orchards  
 Mount Hallen Avocados  
 Mountain Fresh  
 Natures Fruit Company  
 Simpsons Farms Pty Ltd  
 Summerland House With No Steps  
 Sunfresh  
 Sunny Bluff Produce Pty Ltd  
 Sunnyspot Packhouse PL  
 Tinaroo Falls Avocado Trust  
 Tropicado Avocados

#### New Zealand Avocado Exports—Forecast v Import Statistics (5.5kg eqv trays) August 2007-April 2008

Export Dest'n	Aug	Sep	Oct	Nov	Dec	Jan	Feb	Mar	Apr	Total to date
<b>NZ Export Forecast</b>		100,000	350,000	650,000	650,000	350,000	375,000	25,000		<b>2,500,000</b>
<b>Australia</b>	355		163,000	471,000	464,166	445,339	408,055	35,338		<b>1,987,253</b>
<b>USA</b>		42,484	146,175	101,451	146,742	32,727				<b>469,579</b>
<b>Japan</b>	1,996	19,043	51,145	53,557	57,757	19,325	13,473			<b>216,296</b>
<b>Total</b>	<b>2,351</b>	<b>61,526</b>	<b>360,320</b>	<b>626,008</b>	<b>668,665</b>	<b>497,391</b>	<b>421,528</b>	<b>35,338</b>		<b>2,673,127</b>

#### Percentage dispatched by region (Based on seasonal forecast - 2008)

