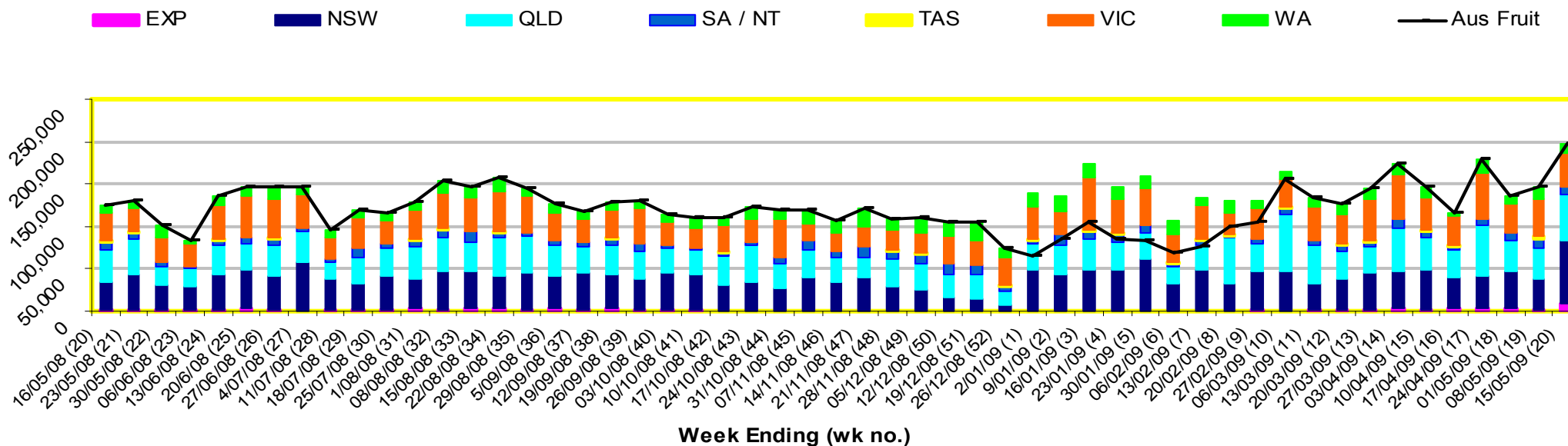


# INFOCADO WEEKLY REPORT: 9th May - 15th May 2009 (Wk 20)

## Industry Dispatches 9th May - 15th May 2009 (Wk 20)

Dest. State	5.5kg										Bulk 10Kg	P/PK Kg	Proc Kg	Other Kg	5.5Kg Eqv Trays All Total	
	<16	16	18	20	22	23	25	28	28+	Total						
EXP			53	414		823	985	2,711	3,534	<b>8,520</b>	487					<b>9,405</b>
NSW	262	519	24,394	9,703	915	13,379	6,607	3,659	210	<b>59,648</b>	7,597	3,420		112	<b>74,103</b>	
QLD	2	77	1,176	7,539	577	10,026	9,341	6,317	79	<b>35,134</b>	8,108	15,168	1,080	6,621	<b>54,034</b>	
SA / NT	3	29	72	156	31	763	6,025	615	144	<b>7,838</b>	579				<b>8,891</b>	
TAS						445	401			<b>846</b>	88				<b>1,006</b>	
VIC	670	1,419	6,464	9,644	173	6,929	2,729	1,307	421	<b>29,756</b>	4,372	6,132			<b>38,820</b>	
WA		42	274	1,931	108	1,970	1,056	296		<b>5,677</b>	3,112	66			<b>11,347</b>	
<b>Total</b>	<b>937</b>	<b>2,086</b>	<b>32,433</b>	<b>29,387</b>	<b>1,804</b>	<b>34,335</b>	<b>27,144</b>	<b>14,905</b>	<b>4,388</b>	<b>147,419</b>	<b>24,343</b>	<b>24,786</b>	<b>1,080</b>	<b>6,733</b>	<b>197,606</b>	

### Throughput Australian & NZ avocados by destination State Throughput 1st January 2009 to date = 2,929,079 5.5kg tray eqv



#### Comments from the CEO

- There are only very small quantities of Shepard avocados left in the system – the market is now predominately Hass
- High prices last week have caused a large disparity between what was forecast forecast versus what was dispatched. The rain forecast for this week may also have caused heavier picking last week.
- Widespread rain in Queensland this week will inevitably have an impact on volumes dispatched.



**Forecast Data (Week 20 - 24)**

Variety	Trays - Total	Bulk	P/Pk	Proc	Other	All - Total
	5.5Kg	10Kg	Kg	Kg	Kg	5.5Kg Eqv

Week 20 - begin 9/05/09						
Fuerte	1,275	121				1,495
Hass	99,821	13,395	27,000	400	200	129,194
Pinkerton	300	352				940
Sharwil	3,700	720				5,009
Shepard	444	106	2,500			1,092
Wurtz	3,900	200				4,264
<b>Week Total</b>	<b>109,440</b>	<b>14,894</b>	<b>29,500</b>	<b>400</b>	<b>200</b>	<b>141,993</b>

Week 21 - begin 16/05/09						
Fuerte	1,500	226				1,911
Hass	99,219	6,715	44,000	1,080	600	119,733
Pinkerton	1,000					1,000
Sharwil	3,960	1,004				5,785
Shepard	100		2,200			500
Wurtz	1,944	286				2,464
<b>Week Total</b>	<b>107,723</b>	<b>8,231</b>	<b>46,200</b>	<b>1,080</b>	<b>600</b>	<b>131,393</b>

Week 22 - begin 23/05/09						
Fuerte	680	196				1,036
Hass	112,677	7,220	27,000	1,080	400	130,982
Pinkerton	900	352				1,540
Sharwil	2,575	524				3,528
Shepard			2,200			400
Wurtz	1,544	266				2,028
<b>Week Total</b>	<b>118,376</b>	<b>8,558</b>	<b>29,200</b>	<b>1,080</b>	<b>400</b>	<b>139,514</b>

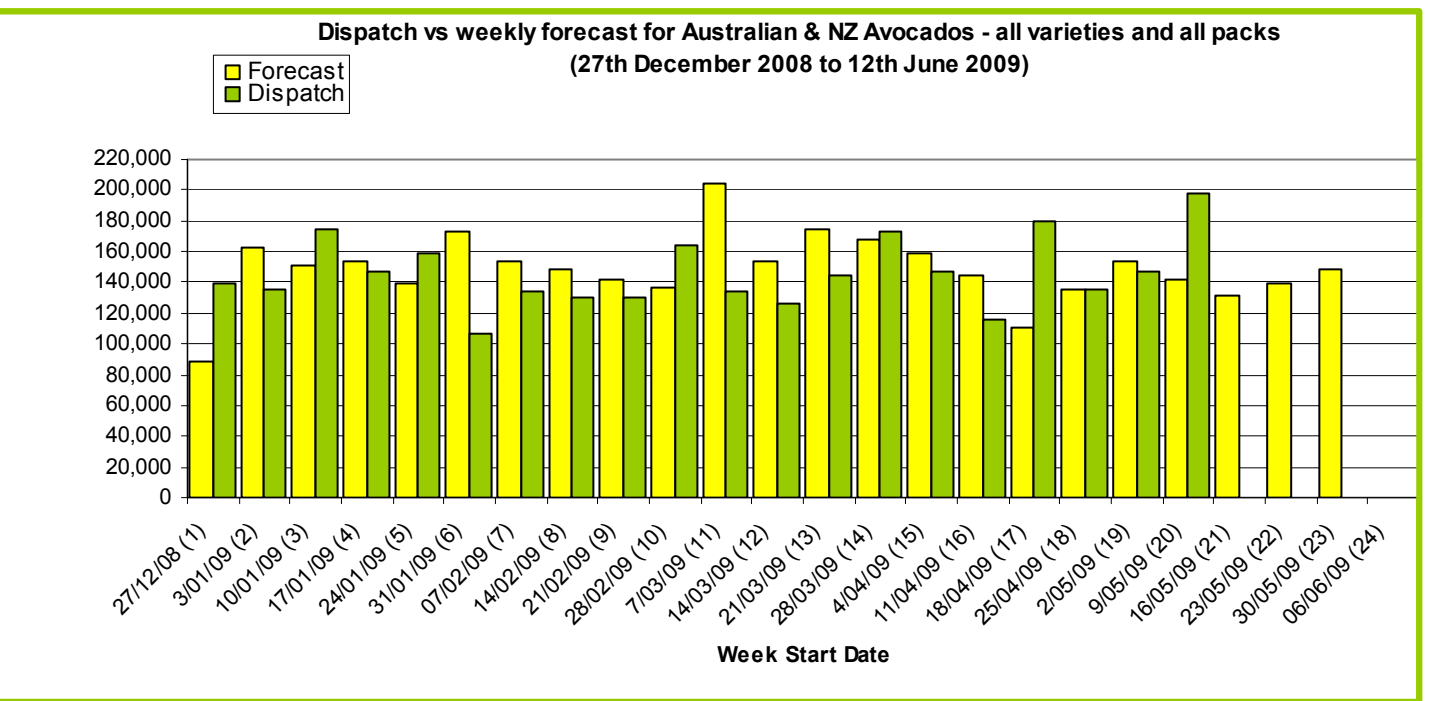
Week 23 - begin 30/05/09						
Fuerte	60					60
Hass	123,746	7,090	30,000	6,080	300	143,252
Pinkerton	600					600
Sharwil	2,595	504				3,511
Shepard			2,200			400
Wurtz	800	100				982
<b>Week Total</b>	<b>127,801</b>	<b>7,694</b>	<b>32,200</b>	<b>6,080</b>	<b>300</b>	<b>148,805</b>

Week 24 - begin 6/06/09						
<b>Week Total</b>						

**Green shading indicates dispatch data Yellow shading indicates forecast data**

**Dispatch Data (Week 20 - begin 9/05/09)**

Variety	Trays	Bulk	P/Pk	Proc	Other	5.5Kg Eqv
	5.5kg eqv	10Kg	Kg	Kg	Kg	Total Trays
Fuerte	1,155	221			112	1,577
Hass	137,066	22,426	22,542	1,080	5,872	183,204
Pinkerton	2,682	24			349	2,789
Sharwil	1,837	680				3,073
Shepard	2,598	573	2,244			4,048
Wurtz	2,081	419			400	2,916
<b>Total</b>	<b>147,419</b>	<b>24,343</b>	<b>24,786</b>	<b>1,080</b>	<b>6,733</b>	<b>197,606</b>



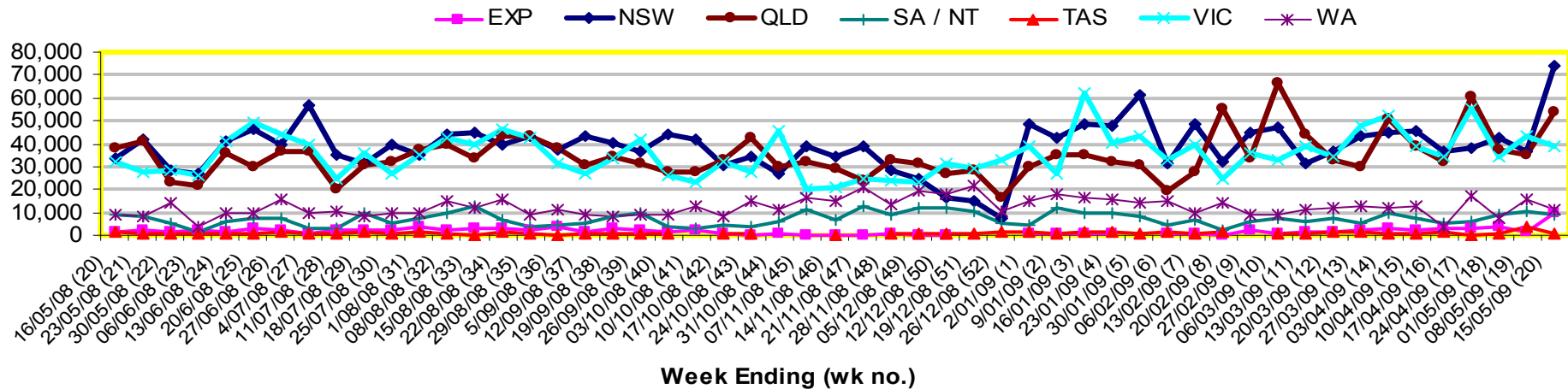
**New Zealand Avocado Exports—Forecast v Import Statistics (5.5kg eqv trays) August 2008-April 2009**

Export Dest'n	Aug	Sep	Oct	Nov	Dec	Jan	Feb	Mar	Apr	Total to date
<b>NZ Export Forecast</b>		26,730	177,487	319,958	378,497	304,722	122,824	6,282		<b>1,336,500</b>
<b>Australia</b>		7,713	210,274	312,989	345,200	235,527	150,635			<b>1,262,338</b>
<b>USA</b>										
<b>Japan</b>		3,920	21,563	37,519	27,534	9,600				<b>100,135</b>
<b>Total</b>		<b>11,633</b>	<b>231,837</b>	<b>350,508</b>	<b>372,734</b>	<b>245,127</b>	<b>150,635</b>			<b>1,362,657</b>

Percentage dispatched by region 2009 Season (Based on seasonal forecast - 2009)



Throughput Australian & NZ avocados by destination State  
Throughput 1st January 2009 to date = 2,929,079 5.5kg trav eqv



**Week 20 contributors - Packhouses**

Donovan Family Investment Trust	Simpsons Farms Pty Ltd
G & C Christensen	Sunfresh
G & J Krenske	Sunny Bluff Produce Pty Ltd
Googa Farms	Sunnyspot Packhouse PL
J & K Hummer	SuperPak Group Pty Ltd
Lavers Orchards	The I & R Family Trust
Mount Hallen Avocados	The Jonsson Family Trust
Natures Fruit Company	Tinaroo Falls Avocado Trust
One Harvest	Tropicado Avocados

**Week 20 contributors - Wholesalers**

Allstates F&V (Perth)	Murray Bros (Brisbane)
Barkers (Melbourne)	Romeos Marketing (Brisbane)
Costa Exchange Trading (Adelaide)	Sculli & Co Pty Ltd (Melbourne)
Costa Exchange Trading (Brisbane)	The La Manna Group (Adelaide)
Dykes Bros (Melbourne)	The La Manna Group (Brisbane)
Etherington (Perth)	The La Manna Group (Melbourne)
Kelly's (Melbourne)	United Fresh (Adelaide)
Mercer Mooney (Perth)	

### Sales Report including Direct Sales from Packhouses, Wholesale Sales and Stock on Hand at Wholesale Level

	Trays 5.5kg eqv (incl. Mod6 & P84)				Bulk 10kg Cartons					Pre-Pack Kg					Total (5.5kg eqv)			
	Hass	Shepard	Other	Total	Hass	Shepard	Other	Total	5.5kg eqv	Hass	Shepard	Other	Total	5.5kg eqv	Hass	Shepard	Other	Total
<b>NSW</b>																		
Total supermarket sales																		
Total non supermarket sales																		
Total exports																		
Total sales																		
Total stock on hand																		
<b>QLD</b>																		
Total supermarket sales	28,092	304		<b>28,396</b>	528	3		531	<b>965</b>	17,396	2,244		19,640	<b>3,571</b>	32,215	717		<b>32,933</b>
Total non supermarket sales	16,668	480	227	<b>17,375</b>	941	176		1,117	<b>2,031</b>						18,379	800	227	<b>19,406</b>
Total exports	3,133			<b>3,133</b>	487			487	<b>885</b>						4,018			<b>4,018</b>
Total sales	<b>47,893</b>	<b>784</b>	<b>227</b>	<b>48,904</b>	<b>1,956</b>	<b>179</b>		<b>2,135</b>	<b>3,882</b>	<b>17,396</b>	<b>2,244</b>		<b>19,640</b>	<b>3,571</b>	<b>54,613</b>	<b>1,517</b>	<b>227</b>	<b>56,357</b>
Total stock on hand	<b>30,981</b>	<b>127</b>	<b>256</b>	<b>31,364</b>	<b>2,461</b>	<b>155</b>	<b>13</b>	<b>2,629</b>	<b>4,780</b>	<b>1,002</b>			<b>1,002</b>	<b>182</b>	<b>35,637</b>	<b>409</b>	<b>279</b>	<b>36,326</b>
<b>SA &amp; TAS</b>																		
Total supermarket sales	10,395		184	<b>10,579</b>	88		3	91	<b>165</b>						10,555		189	<b>10,745</b>
Total non supermarket sales	5,490	236		<b>5,726</b>	357			357	<b>649</b>						6,139	236		<b>6,375</b>
Total exports																		
Total sales	<b>15,885</b>	<b>236</b>	<b>184</b>	<b>16,305</b>	<b>445</b>		<b>3</b>	<b>448</b>	<b>815</b>						<b>16,694</b>	<b>236</b>	<b>189</b>	<b>17,119</b>
Total stock on hand #	<b>9,566</b>	<b>96</b>	<b>250</b>	<b>9,912</b>	<b>943</b>	<b>58</b>	<b>100</b>	<b>1,101</b>	<b>2,002</b>						<b>11,281</b>	<b>201</b>	<b>432</b>	<b>11,914</b>
<b>VIC</b>																		
Total supermarket sales	14,546			<b>14,546</b>	1,408			1,408	<b>2,560</b>	6,132			6,132	<b>1,115</b>	18,221			<b>18,221</b>
Total non supermarket sales	4,724	1,553	779	<b>7,056</b>	441	434		875	<b>1,591</b>						5,526	2,342	779	<b>8,647</b>
Total exports																		
Total sales	<b>19,271</b>	<b>1,553</b>	<b>779</b>	<b>21,603</b>	<b>1,849</b>	<b>434</b>		<b>2,283</b>	<b>4,151</b>	<b>6,132</b>			<b>6,132</b>	<b>1,115</b>	<b>23,748</b>	<b>2,342</b>	<b>779</b>	<b>26,869</b>
Total stock on hand	<b>15,243</b>	<b>3,936</b>	<b>4,046</b>	<b>23,226</b>	<b>1,671</b>	<b>1,443</b>	<b>158</b>	<b>3,272</b>	<b>5,949</b>						<b>18,282</b>	<b>6,560</b>	<b>4,334</b>	<b>29,175</b>
<b>WA</b>																		
Total supermarket sales	2,597			<b>2,597</b>	1,144			1,144	<b>2,080</b>						4,677			<b>4,677</b>
Total non supermarket sales	6,397			<b>6,397</b>	2,111			2,111	<b>3,838</b>						10,235			<b>10,235</b>
Total exports																		
Total sales	<b>8,994</b>			<b>8,994</b>	<b>3,255</b>			<b>3,255</b>	<b>5,918</b>						<b>14,912</b>			<b>14,912</b>
Total stock on hand #	<b>6,227</b>			<b>6,227</b>	<b>1,191</b>	<b>79</b>		<b>1,270</b>	<b>2,309</b>						<b>8,392</b>	<b>144</b>		<b>8,536</b>
<b>TOTAL</b>																		
Total supermarket sales	71,758	304	783	<b>72,845</b>	4,752	3	15	4,770	<b>8,673</b>	26,948	2,244		29,192	<b>5,308</b>	85,297	717	810	<b>86,825</b>
Total non supermarket sales	33,279	2,269	1,006	<b>36,554</b>	3,850	610		4,460	<b>8,109</b>						40,279	3,378	1,006	<b>44,663</b>
Total exports	3,133			<b>3,133</b>	487			487	<b>885</b>						4,018			<b>4,018</b>
Total sales	<b>108,170</b>	<b>2,573</b>	<b>1,789</b>	<b>112,532</b>	<b>9,089</b>	<b>613</b>	<b>15</b>	<b>9,717</b>	<b>17,667</b>	<b>26,948</b>	<b>2,244</b>		<b>29,192</b>	<b>5,308</b>	<b>129,595</b>	<b>4,095</b>	<b>1,817</b>	<b>135,507</b>
Total stock on hand	<b>62,017</b>	<b>4,160</b>	<b>4,552</b>	<b>70,729</b>	<b>6,266</b>	<b>1,735</b>	<b>271</b>	<b>8,272</b>	<b>15,040</b>	<b>1,002</b>			<b>1,002</b>	<b>182</b>	<b>73,592</b>	<b>7,314</b>	<b>5,045</b>	<b>85,952</b>

