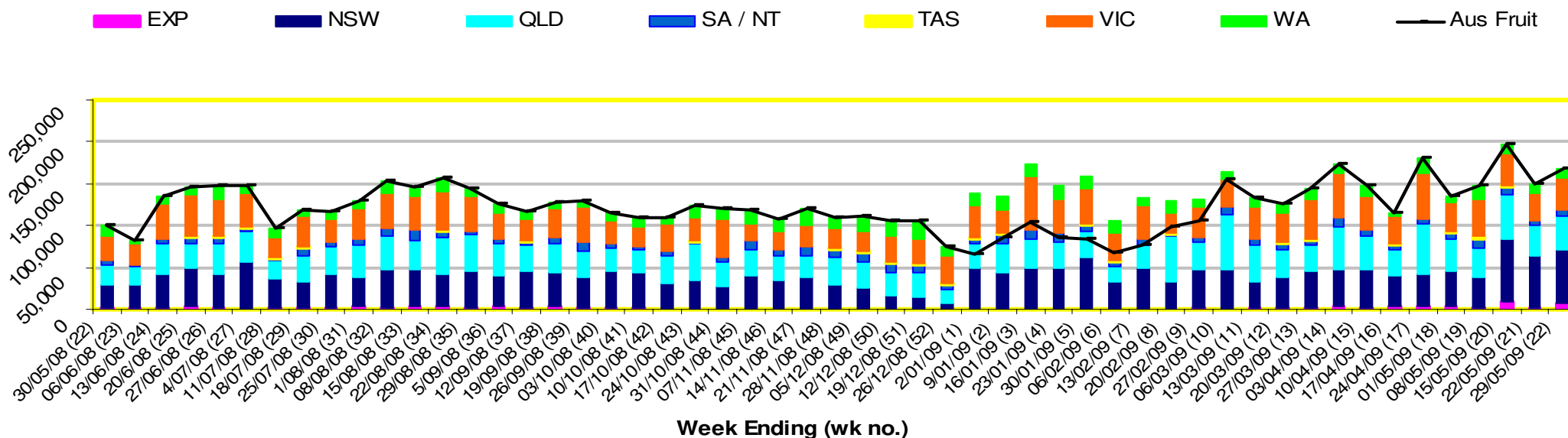


INFOCADO WEEKLY REPORT: 23rd May - 29th May 2009 (Wk 22)

Industry Dispatches 23rd May - 29th May 2009 (Wk 22)

Dest. State	5.5kg										Total	Bulk 10Kg	P/ PK Kg	Oil Kg	Other Kg	5.5Kg Eqv Trays All Total
	< 16	16	18	20	22	23	25	28	28+							
EXP		26	178	1,215		1,119	848	2,446	829		6,661	75				6,797
NSW	158	465	6,380	6,826	1,072	14,000	10,622	3,171	115		42,809	11,768	2,376			64,637
QLD		108	869	5,577	262	5,055	5,622	5,149	424		23,066	6,474	15,287	3,208	9,693	39,961
SA / NT			11	178		2,414	2,538	1,137			6,278	289				6,803
TAS						445	534				979					979
VIC	355	1,193	5,204	8,036	469	4,793	6,193	1,134	137		27,514	4,926	4,400			37,270
WA			93	3,314		1,410	3,222	304			8,343	1,920	120			11,856
Total	513	1,792	12,735	25,146	1,803	29,236	29,579	13,341	1,505		115,650	25,452	22,183	3,208	9,693	168,304

Throughput Australian & NZ avocados by destination State Throughput 1st January 2009 to date = 3,247,187 5.5kg tray eqv



Comments from the CEO

- Dispatches are again greater than forecasted trays for this week.
- Total exports have grown this week, a great sign of work being done across the industry.
- Please note the monthly Dry Matter Report is attached to this weeks report.

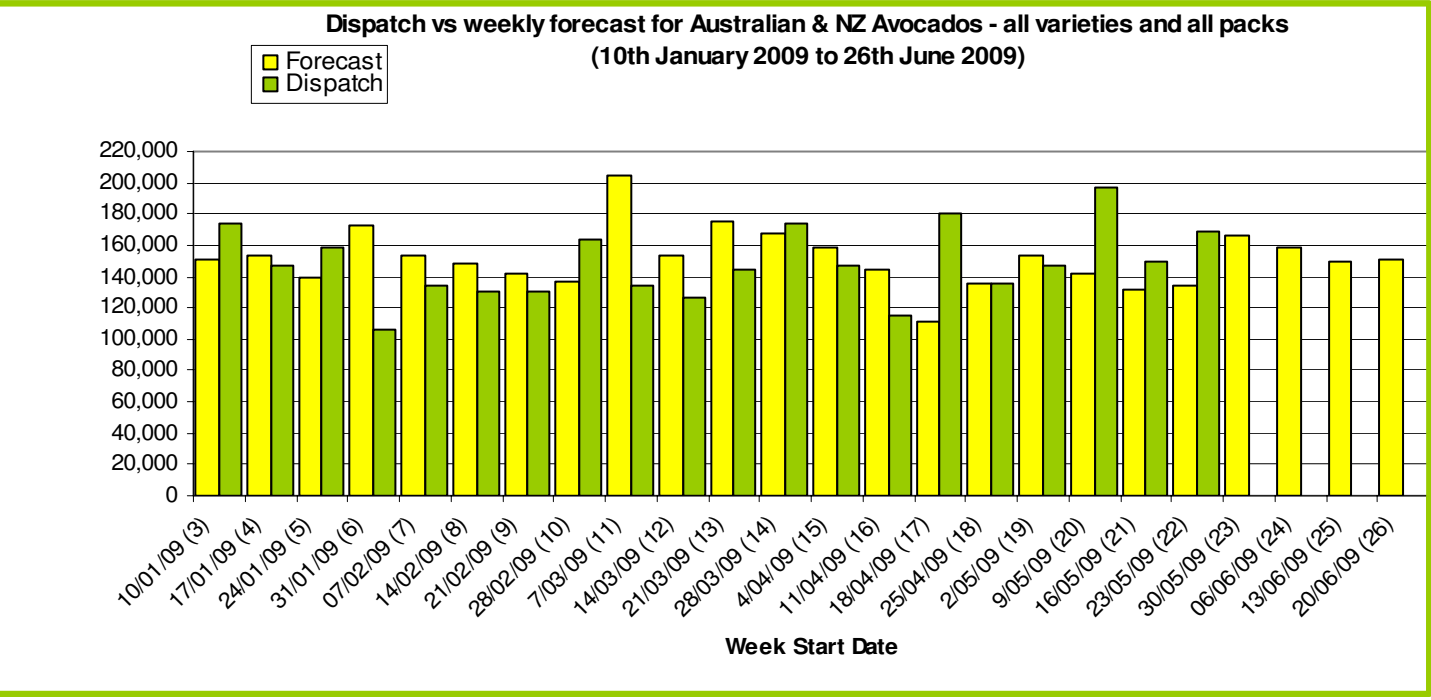


Forecast Data (Week 22 - 26)

Variety	Trays -	Bulk	P/ Pk	Proc	Other	All - Total
	5.5Kg	10Kg	Kg	Kg	Kg	5.5Kg Eqv
Week 22 - begin 23/05/09						
Fuerte	680	196				1,036
Hass	110,617	7,920	15,400	1,080	200	128,049
Pinkerton	600	352				1,240
Sharwil	1,715	554				2,722
Shepard	156	86	2,200			712
Wurtz	344	96				519
Week Total	114,112	9,204	17,600	1,080	200	134,279
Week 23 - begin 30/05/09						
Bacon		80				145
Fuerte	60					60
Hass	138,947	9,240	15,400	6,080	300	159,707
Pinkerton	600				200	636
Sharwil	2,750	539	2,000			4,094
Shepard			2,200			400
Wurtz	900	30				955
Week Total	143,257	9,889	19,600	6,080	500	165,997
Week 24 - begin 6/06/09						
Bacon		80				145
Hass	134,163	8,810	16,000	1,080	300	153,341
Pinkerton	400					400
Sharwil	2,550	519	2,000			3,858
Shepard	76	43	2,200			554
Wurtz	500	20				536
Week Total	137,689	9,472	20,200	1,080	300	158,835
Week 25 - begin 13/06/09						
Bacon		120				218
Hass	129,968	7,810	16,000	1,080	300	147,328
Pinkerton	200					200
Sharwil	1,630	95				1,803
Shepard	76	43				154
Wurtz	400	10				418
Week Total	132,274	8,078	16,000	1,080	300	150,121
Week 26 - begin 20/06/09						
Bacon		120				218
Hass	131,577	8,060	16,000	1,080	250	149,382
Sharwil	1,090	25				1,135
Week Total	132,667	8,205	16,000	1,080	250	150,735

Green shading indicates dispatch data Yellow shading indicates forecast data

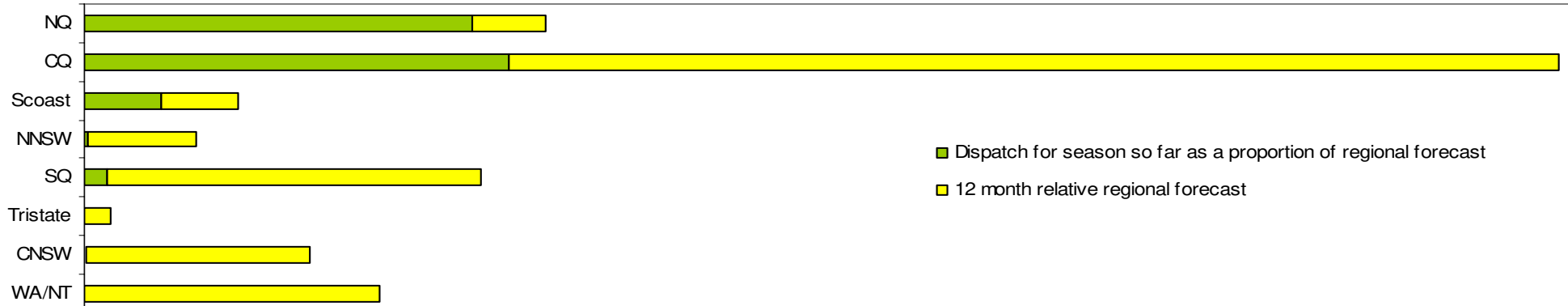
Dispatch Data (Week 22 - begin 23/ 05/ 09)						
Variety	Trays	Bulk	P/ Pk	Oil	Other	5.5Kg Eqv
	5.5kg eqv	10Kg	Kg	Kg	Kg	Total Trays
Fuerte	61	43				139
Hass	111,945	24,711	19,609	3,208	9,000	162,658
Pinkerton	941	6			693	1,078
Sharwil	1,054	267	2,574			2,007
Shepard	29	10				47
Wurtz	1,621	415				2,376
Total	115,651	25,452	22,183	3,208	9,693	168,304



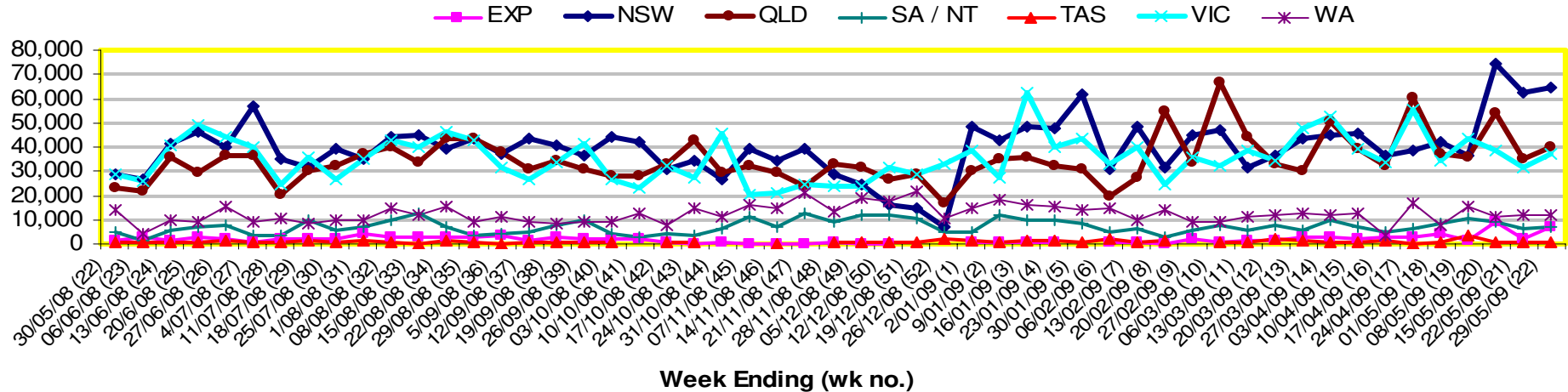
New Zealand Avocado Exports—Forecast v Import Statistics (5.5kg eqv trays) August 2008-April 2009

Export Dest'n	Aug	Sep	Oct	Nov	Dec	Jan	Feb	Mar	Apr	Total to date
NZ Export Forecast		26,730	177,487	319,958	378,497	304,722	122,824	6,282		1,336,500
Australia		7,713	210,274	312,989	345,200	235,527	150,635			1,262,338
USA										
Japan		3,920	21,563	37,519	27,534	9,600				100,135
Total		11,633	231,837	350,508	372,734	245,127	150,635			1,362,657

Percentage dispatched by region 2009 Season (Based on seasonal forecast - 2009)



Throughput Australian & NZ avocados by destination State
Throughput 1st January 2009 to date = 3,247,187 5.5kq tray eqv



Week 22 contributors - Packhouses

- Chris and Sue Allan
- Donovan Family Investment Trust
- G & C Christensen
- G & J Krenske
- Googa Farms
- J & K Hummer
- Mount Hallen Avocados
- Natures Fruit Company
- One Harvest
- Simpsons Farms Pty Ltd

- Sunfresh
- Sunny Bluff Produce Pty Ltd
- Sunnyspot Packhouse PL
- SuperPak Group Pty Ltd
- The I & R Family Trust
- The Jonsson Family Trust
- Tinaroo Falls Avocado Trust
- Touchwood Farming
- Tropicado Avocados

Week 22 contributors - Wholesalers

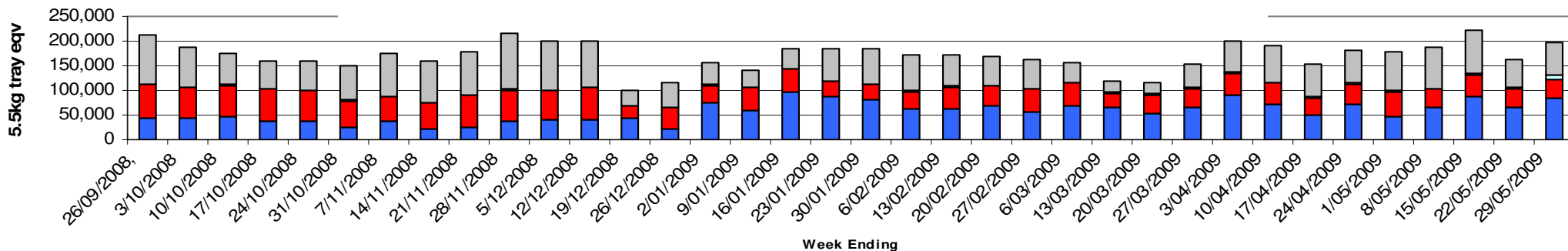
- Barkers (Melbourne)
- Costa Exchange Trading (Adelaide)
- Costa Exchange Trading (Brisbane)
- Dykes Bros (Melbourne)
- Etherington (Perth)
- Kelly's (Melbourne)
- Murray Bros (Brisbane)
- Premier Fruits Pty Ltd (Melbourne)
- Romeos Marketing (Brisbane)
- Sculli & Co Pty Ltd (Melbourne)
- The La Manna Group (Adelaide)
- The La Manna Group (Brisbane)
- The La Manna Group (Melbourne)
- United Fresh (Adelaide)

Sales Report including Direct Sales from Packhouses, Wholesale Sales and Stock on Hand at Wholesale Level

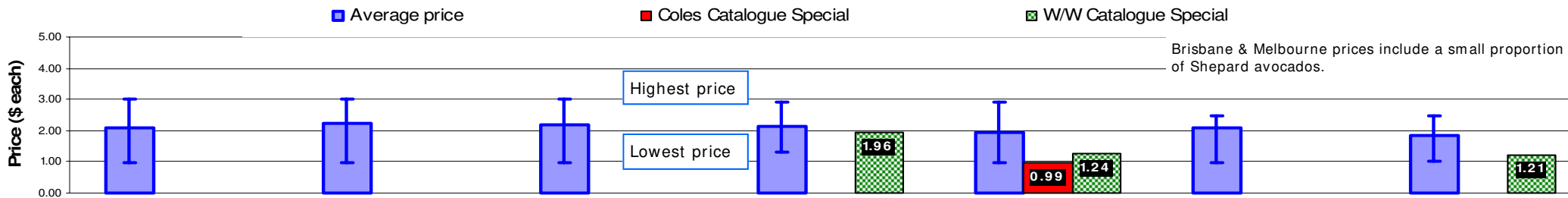
	Trays 5.5kg eqv (incl. Mod6 & P84)				Bulk 10kg Cartons					Pre-Pack Kg					Total (5.5kg eqv)			
	Hass	Shepard	Other	Total	Hass	Shepard	Other	Total	5.5kg eqv	Hass	Shepard	Other	Total	5.5kg eqv	Hass	Shepard	Other	Total
NSW																		
Total supermarket sales																		
Total non supermarket sales	# Full data set not included because not enough NSW wholesalers contributed data this week																	
Total exports																		
Total sales																		
Total stock on hand																		
QLD																		
Total supermarket sales	22,752			22,752	2,544			2,544	4,625	17,569		2,574	20,143	3,662	30,572		468	31,040
Total non supermarket sales	13,201	663	298	14,162	1,432	305	175	1,912	3,476						15,805	1,218	616	17,638
Total exports	6,661			6,661	75			75	136						6,797			6,797
Total sales	42,614	663	298	43,575	4,051	305	175	4,531	8,238	17,569		2,574	20,143	3,662	53,174	1,218	1,084	55,476
Total stock on hand	32,009	434	687	33,130	1,670	348	36	2,054	3,735	3,202			3,202	582	35,628	1,067	752	37,447
SA & TAS																		
Total supermarket sales	10,389		71	10,460						114			114	21	10,410		71	10,481
Total non supermarket sales	3,212			3,212	433			433	787						3,999			3,999
Total exports																		
Total sales	13,601		71	13,672	433			433	787	114			114	21	14,409		71	14,480
Total stock on hand #	3,418	96	186	3,700	452	58	100	610	1,109	6			6	1	4,240	201	368	4,810
VIC																		
Total supermarket sales	11,014		29	11,043	1,679		43	1,722	3,131	4,400			4,400	800	14,867		107	14,974
Total non supermarket sales	7,816	290	1,034	9,140	964	565	16	1,545	2,809						9,568	1,317	1,063	11,949
Total exports																		
Total sales	18,830	290	1,063	20,183	2,643	565	59	3,267	5,940	4,400			4,400	800	24,435	1,317	1,170	26,923
Total stock on hand	12,220	3,520	2,407	18,147	1,585	1,094	275	2,954	5,371						15,102	5,510	2,907	23,518
WA																		
Total supermarket sales																		
Total non supermarket sales	# Full data set not included because not enough WA wholesalers contributed data this week																	
Total exports																		
Total sales	2,259			2,259	39			39	71						2,330			2,330
Total stock on hand #																		
TOTAL																		
Total supermarket sales	68,715		100	68,815	6,471		43	6,514	11,844	24,579		2,574	27,153	4,937	84,949		646	85,595
Total non supermarket sales	27,822	953	1,332	30,107	3,016	870	191	4,077	7,413						33,306	2,535	1,679	37,520
Total exports	6,661			6,661	75			75	136						6,797			6,797
Total sales	103,198	953	1,432	105,583	9,562	870	234	10,666	19,393	24,579		2,574	27,153	4,937	125,053	2,535	2,325	129,913
Total stock on hand	49,906	4,050	3,279	57,236	3,746	1,500	411	5,657	10,285	3,208			3,208	583	57,300	6,778	4,027	68,105

Weekly National Sales

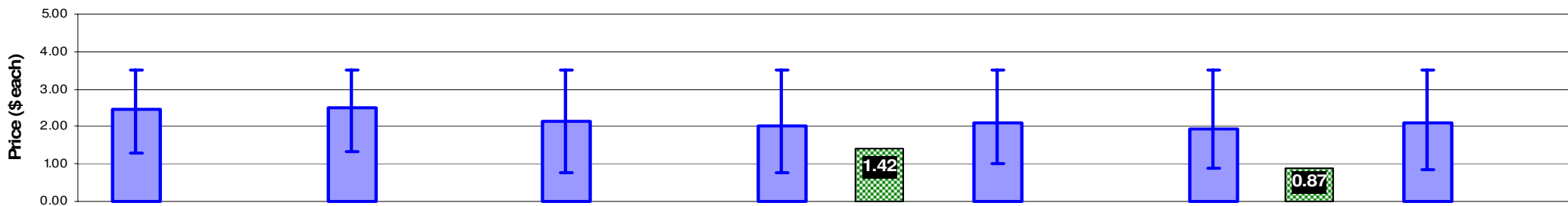
■ Total supermarket sales
 ■ Total non supermarket sales
 ■ Total exports
 ■ Total closing stock



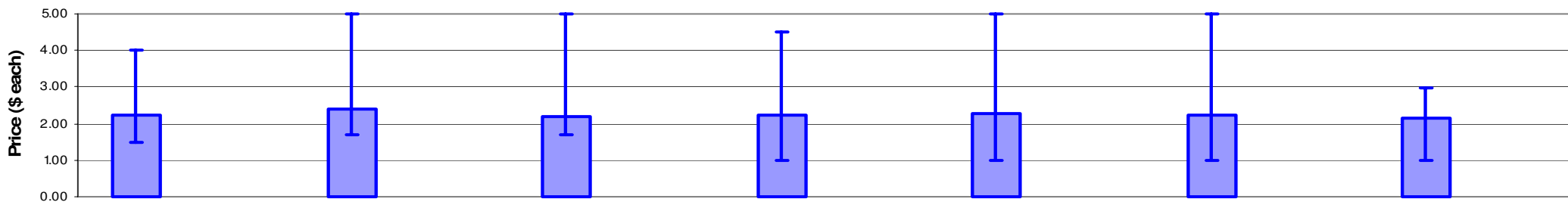
Average Avocado Retail Prices - Brisbane



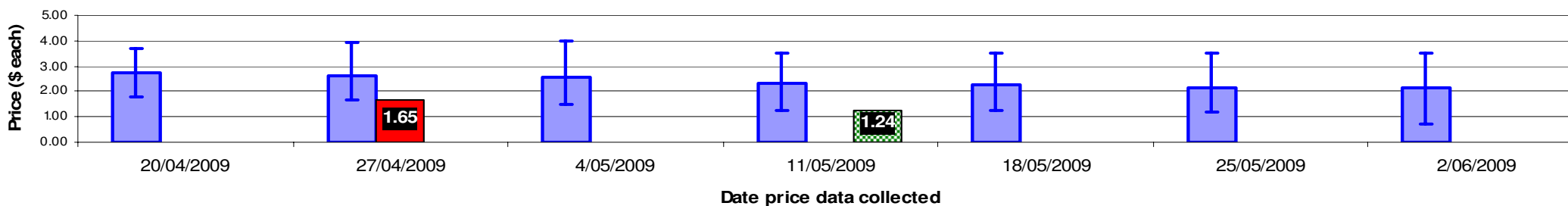
Average Avocado Retail Prices - Sydney



Average Avocado Retail Prices - Melbourne



Average Avocado Retail Prices - Perth



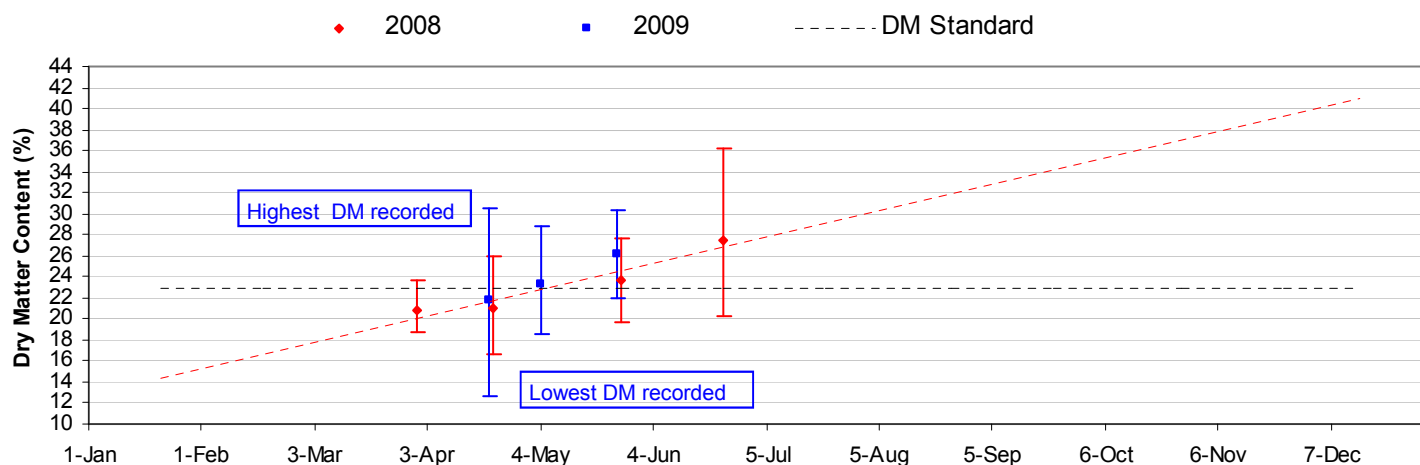


Avocado DM Content Report

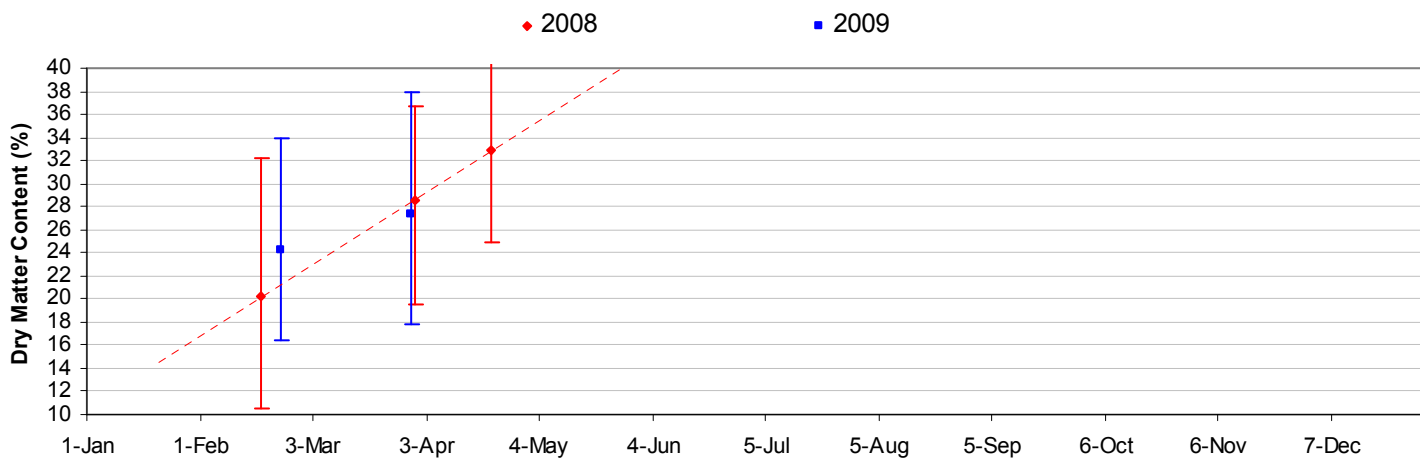
Fruit collected 25th May 2009

Dry Matter Intervals	Proportion of Fruit tested for each Dry matter interval 25th May 2009									
	NQ		CQ		SC	SQ	NNSW	CNSW	Tri	WA
	Hass	Shepard	Hass	Shepard	Hass	Hass	Hass	Hass	Hass	Hass
<=18%	0%		0%		0%					
18.1%-20.9%	0%		8%		0%					
21%-22.9%	6%		28%		0%					
23%-28%	70%		61%		100%					
27.1%-40%	24%		3%		0%					
>40%	0%		0%		0%					

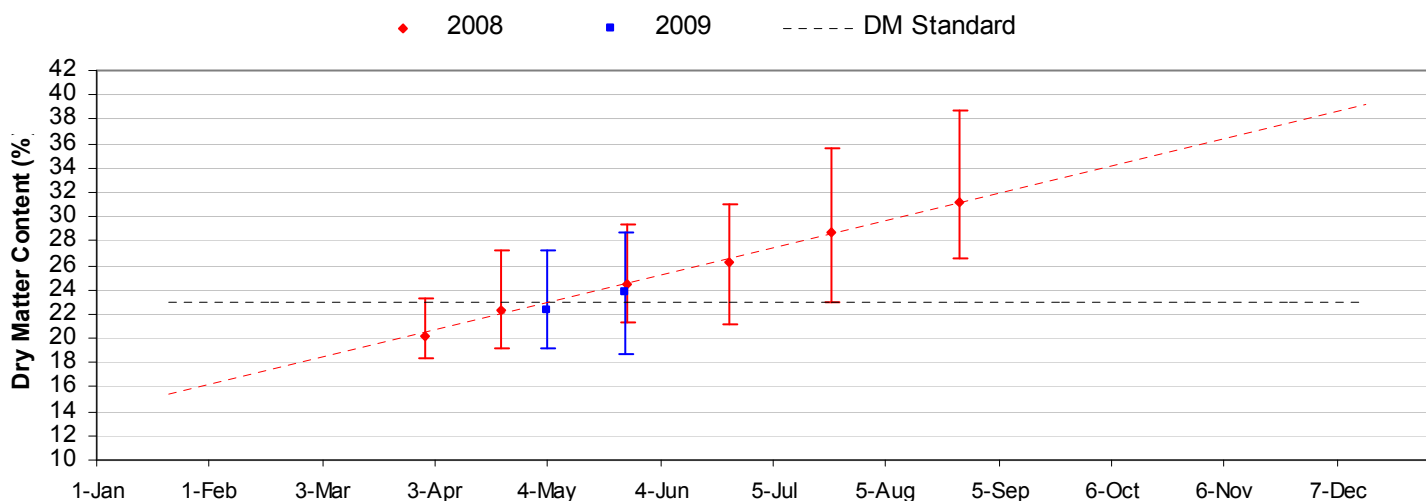
Average DM content - North Queensland (Hass)



Average DM content - North Queensland (Shepard)

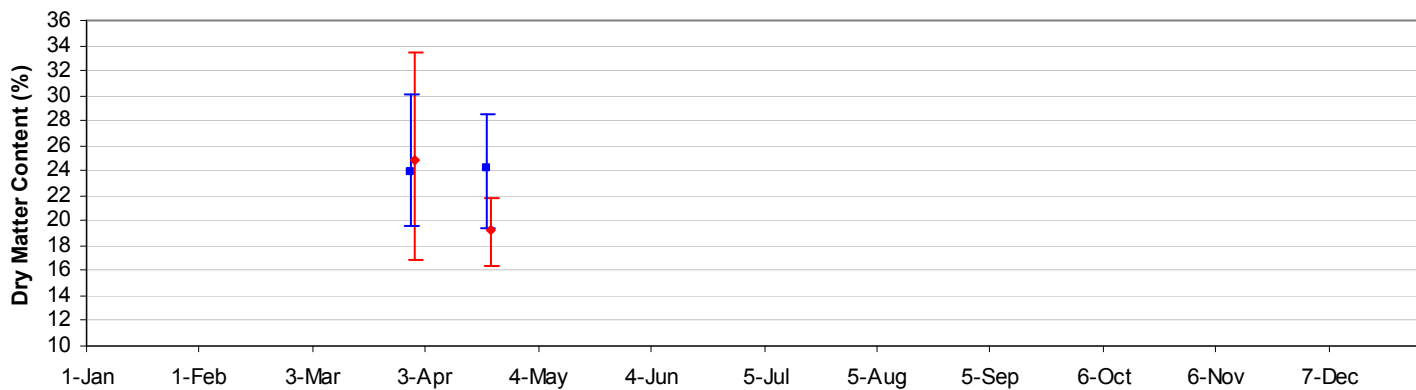


Average DM content - Central Queensland (Hass)



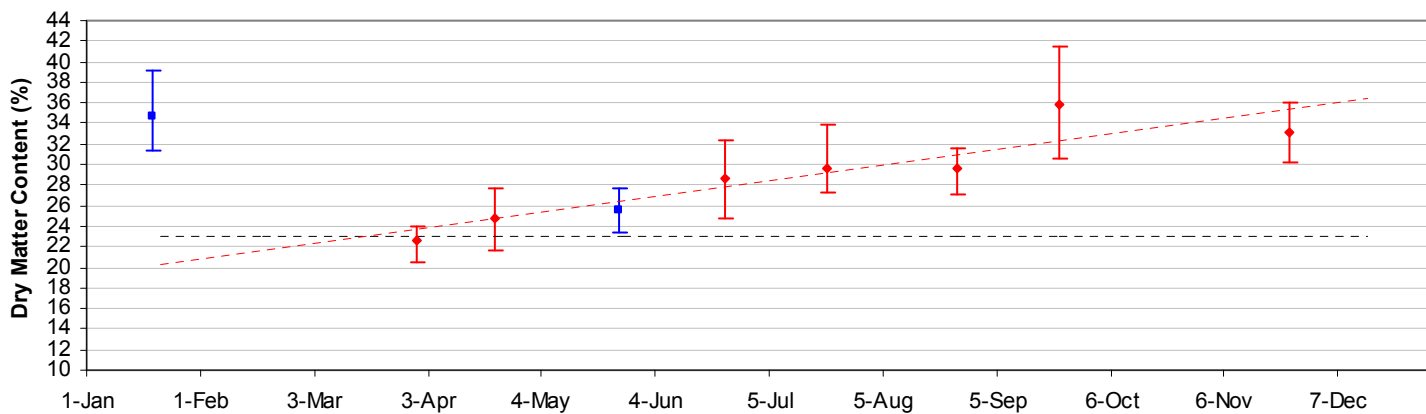
Average DM content - Central Queensland (Shepard)

◆ 2008 ■ 2009



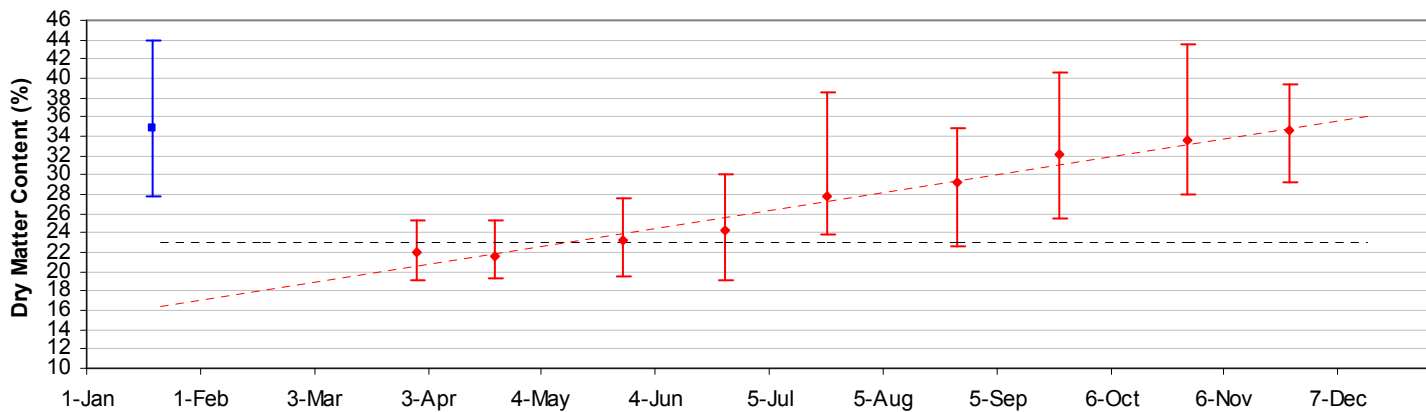
Average DM content - Sunshine Coast (Hass)

◆ 2008 ■ 2009 - - - - - DM Standard



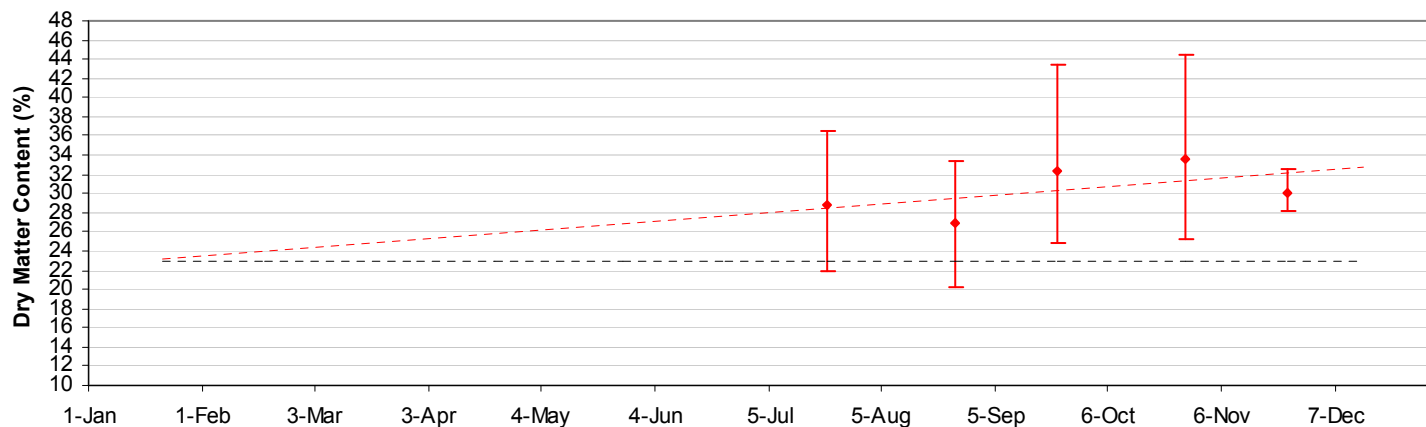
Average DM content - South Qld (Hass)

◆ 2008 ■ 2009 - - - - - DM Standard



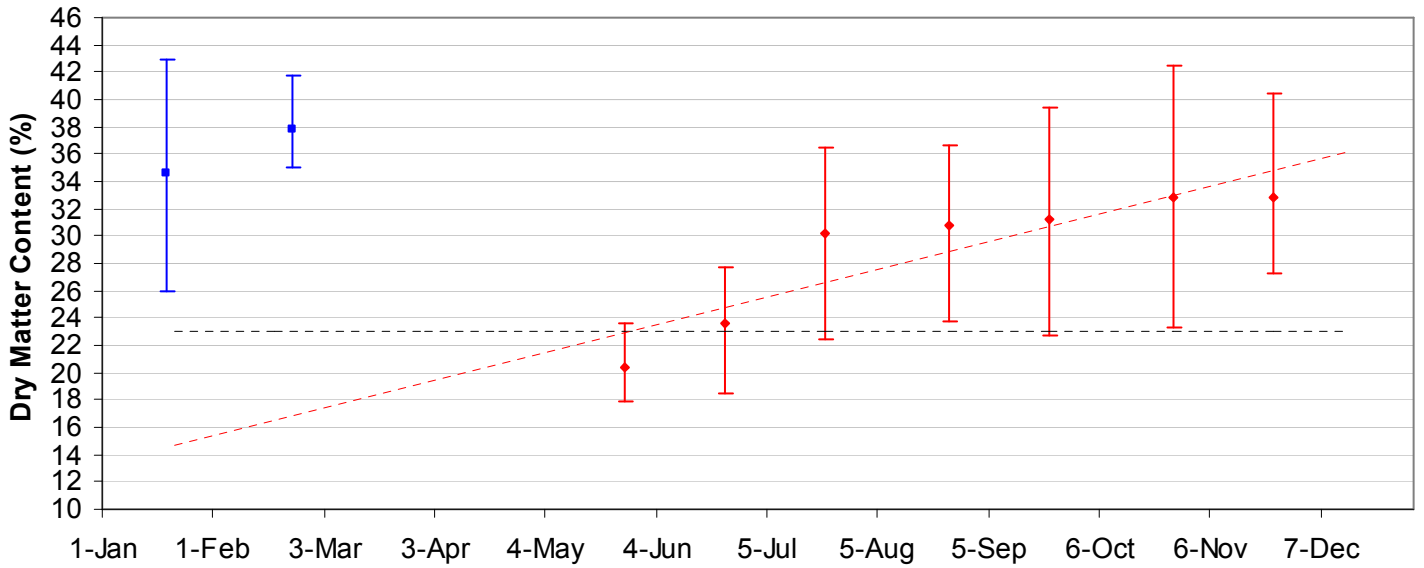
Average DM content - Northern NSW (Hass)

◆ 2008 ■ 2009 - - - - - DM Standard



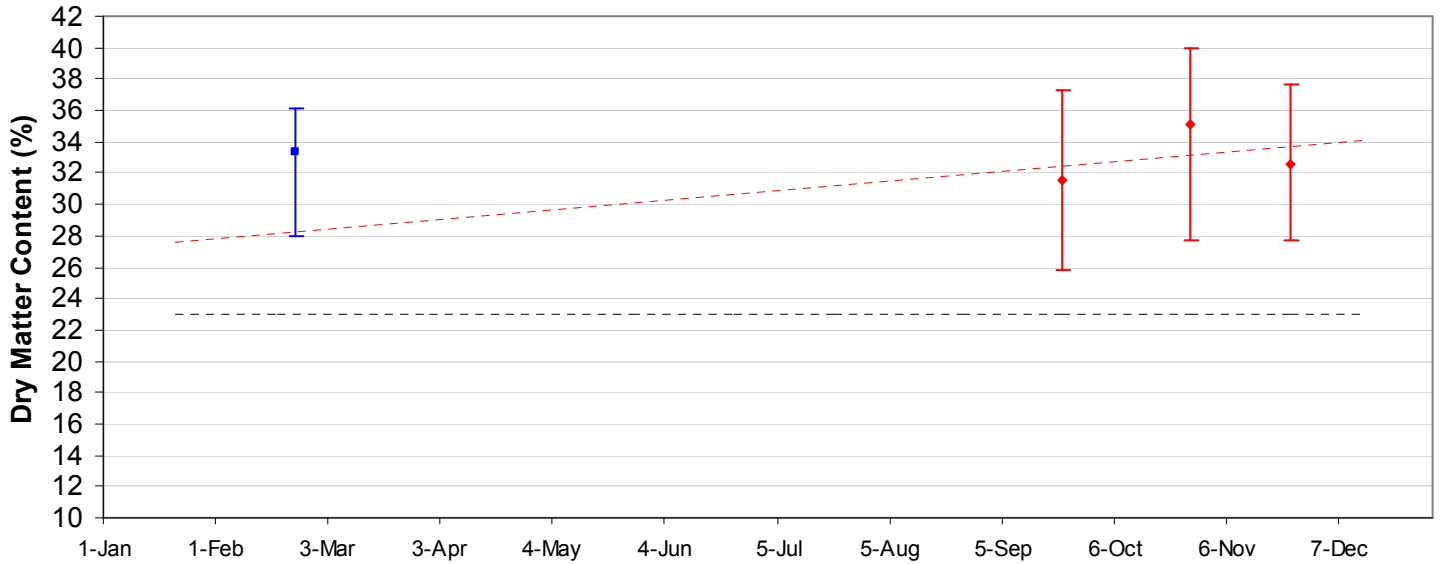
Average DM content - Central NSW (Hass)

◆ 2008 ■ 2009 - - - - DM Standard



Average DM content - Tristate (Hass)

◆ 2008 ■ 2009 - - - - DM Standard



Average DM content - WA (Hass)

◆ 2008 ■ 2009 - - - - DM Standard

