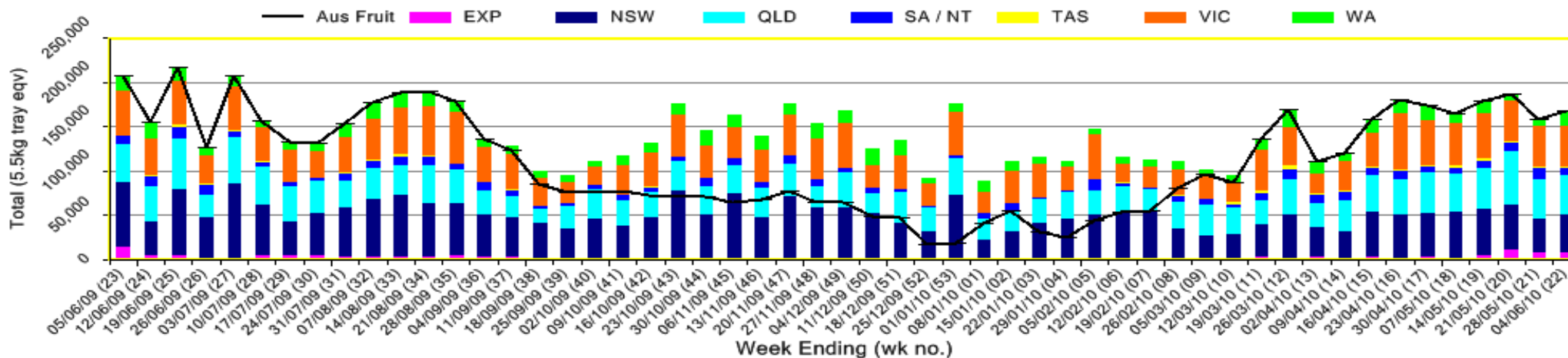


INFOCADO WEEKLY REPORT: 29th May - 4th June 2010 (Wk 22)

Industry Dispatches 29th May - 4th June 2010 (Wk 22)

Dest. State	5.5kg	5.5kg	5.5kg	5.5kg	5.5kg	5.5kg	5.5kg	5.5kg	5.5kg	Trays - Total	Bulk	P/PK	Oil	Other	5.5Kg Eqv Trays All
	<16	16	18	20	22	23	25	28	28+	5.5Kg Eqv	10Kg	Kg	Kg	Kg	Total
EXP								4,327	2,294	6,621	739	880			8,125
NSW	246	686	2,137	9,299	1,228	12,940	4,470	2,130	79	33,215	4,771	5,349			42,863
QLD	6	192	686	4,888	577	12,506	13,105	2,922	50	34,932	4,464	2,078	5,000	311	44,392
SA / NT		4	298	405		960	3,374	1,366		6,407	576	144			7,480
TAS								861		861	256	72			1,339
VIC	362	2,257	12,919	12,738	85	6,511	1,906	1,046	13	37,837	4,459	2,616			46,420
WA			241	2,461		3,119	6,506	393		12,720	2,377				17,042
Total	614	3,139	16,281	29,791	1,890	36,036	30,222	12,184	2,436	132,593	17,642	11,139	5,000	311	167,660

Throughput Australian & NZ avocados by destination state
Throughput 1st January 2010 to date = 3,185,718 5.5kg tray eqv



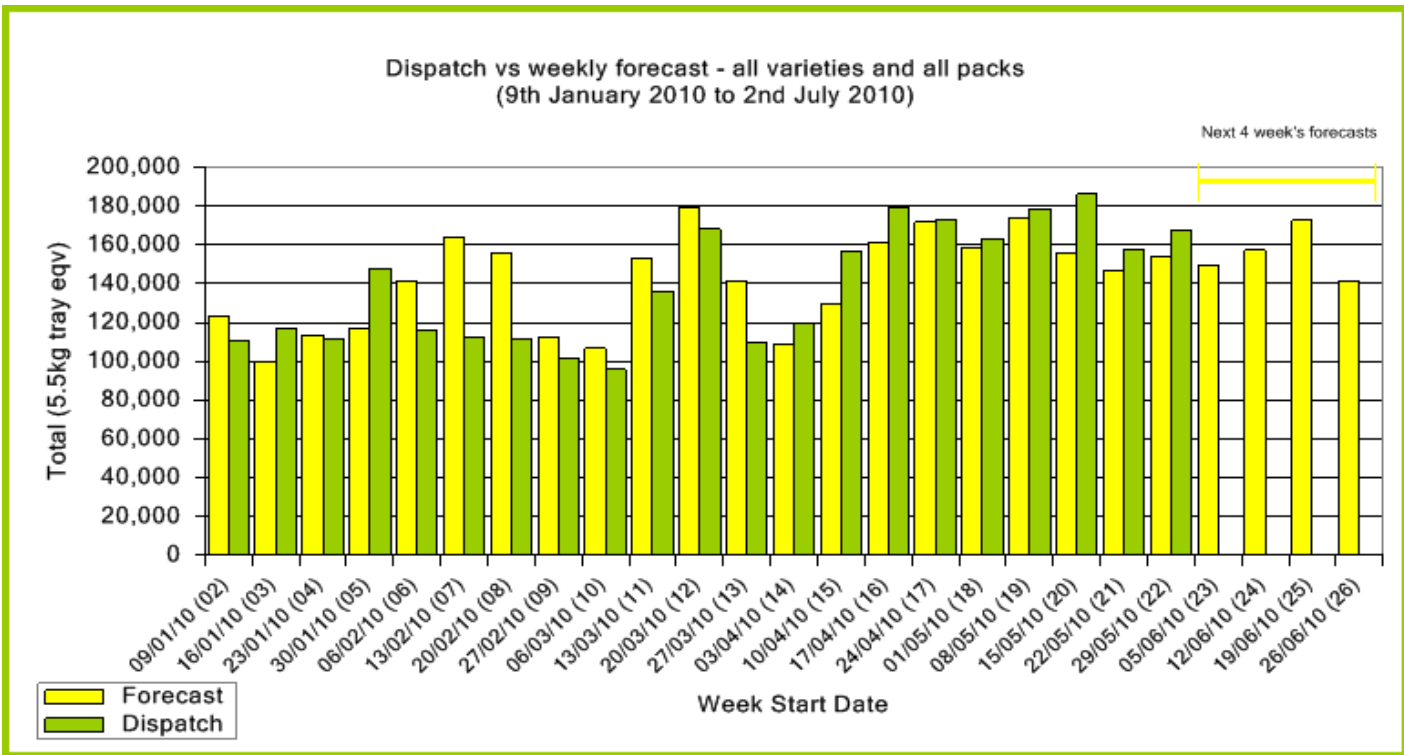
Comments from the CEO

- Please note that the Dry Matter results from fruit sampled on the 31st May are included at the back of this week's report.
- Dispatch volumes remain fairly constant with stock on hand at the wholesale level reducing slightly.
- Hass are on catalogue special in Coles in Melbourne this week.
- School holidays start in Qld and Vic on the 26th June and in ACT, SA and WA on the 3rd July.



Forecast Data (Week 22 - 26)					
Variety	Trays - Total	Bulk	P/Pk	Proc	All - Total
	5.5Kg Eqv	10Kg	Kg	Kg	5.5Kg Eqv
Week 22 - begin 29/05/2010					
Bacon		80			145
Fuerte	100	10			118
Hass	129,386	8,150	25,500	5,000	149,749
Pinkerton	80				80
Sharwil	630	10			648
Shepard	2,000	600			3,091
Wurtz	200				200
Week Total	132,396	8,850	25,500	5,000	154,032
Week 23 - begin 05/06/2010					
Bacon		80			145
Hass	127,565	8,650	26,500	5,000	149,019
Pinkerton	50				50
Sharwil	320	65			438
Wurtz	50				50
Week Total	127,985	8,795	26,500	5,000	149,703
Week 24 - begin 12/06/2010					
Bacon		120			218
Hass	130,269	8,550	26,500	5,000	151,541
Pinkerton	30				30
Sharwil	350	100			532
Wurtz	5,030				5,030
Week Total	135,679	8,770	26,500	5,000	157,351
Week 25 - begin 19/06/2010					
Bacon		120			218
Hass	142,204	10,700	23,500	5,000	166,841
Sharwil	340	100			522
Wurtz	5,020				5,020
Week Total	147,564	10,920	23,500	5,000	172,601
Week 26 - begin 26/06/2010					
Bacon		120			218
Hass	118,968	9,050			135,423
Sharwil	640	75			776
Wurtz	5,010				5,010
Week Total	124,618	9,245			141,427

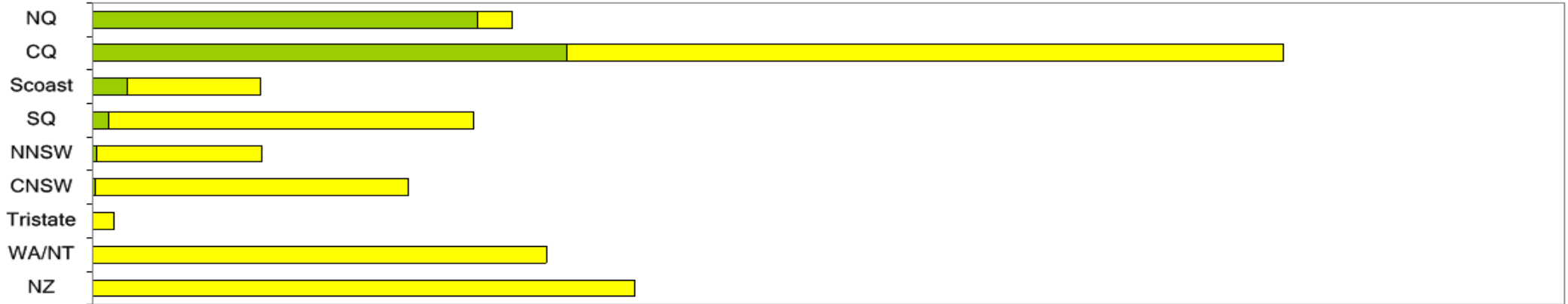
Green shading indicates dispatch data			Yellow shading indicates forecast data			
Dispatch Data (Week 22 - begin 29/05/2010)						
Variety	Trays	Bulk	P/PK	Oil	Other	5.5Kg Eqv
	5.5Kg Eqv	10Kg	Kg	Kg	Kg	Total Trays
Bacon			72			131
Fuerte	58	4				65
Hass	125,957	17,083	11,139	5,000	311	160,008
Pinkerton	1,030	3				1,035
Sharwil	1,316	342				1,938
Shepard	4,073	96				4,248
Wurtz	159	42				235
Total	132,593	17,642	11,139	5,000	311	167,660



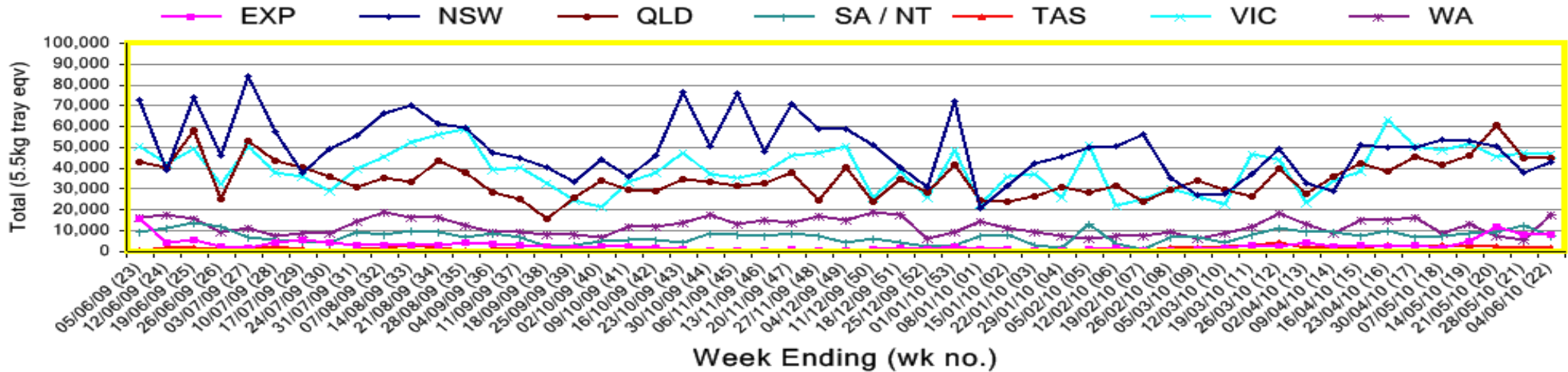
New Zealand Avocado Exports—Forecast v Import Statistics (5.5kg eqv trays) August 2009-April 2010										
Export Dest'n	Aug	Sep	Oct	Nov	Dec	Jan	Feb	Mar	Apr	Total to date
NZ Export to Australia Forecast		5,055	314,324	314,516	354,135	328,074	344,756	133,464	5,641	1,799,965
Australia		41,599	321,706	363,357	347,496	439,691	258,767	16,210		1,788,826
USA	2,727	15,090	22,787	6,183						46,787
Japan	4,519	28,746	64,348	69,842	45,244	14,154				226,853
Total	7,246	85,436	408,840	439,382	392,740	453,845	258,767	16,210		2,062,466

Percentage dispatched by region (Based on seasonal forecast - 2010)

■ Dispatch for season so far as a proportion of regional forecast ■ 12 month relative regional Forecast



Throughput Australian & NZ avocados by destination state Throughput 1st January 2010 to date = 3,185,718 5.5kg tray eqv



Week 22 contributors - Packhouses

- | | |
|---------------------------------|-----------------------------|
| Avocados With Altitude Pty Ltd | Simpson Farms Pty Ltd |
| Balmoral Orchard | Sunfresh |
| Donovan Family Investment Trust | Sunny Bluff Produce Pty Ltd |
| G & C Christensen | Sunnyspot Packhouse PL |
| G & J Krenske | SuperPak |
| Lavers Orchards | Tinaroo Falls Avocado Trust |
| Natures Fruit Company | Touchwood Farming |

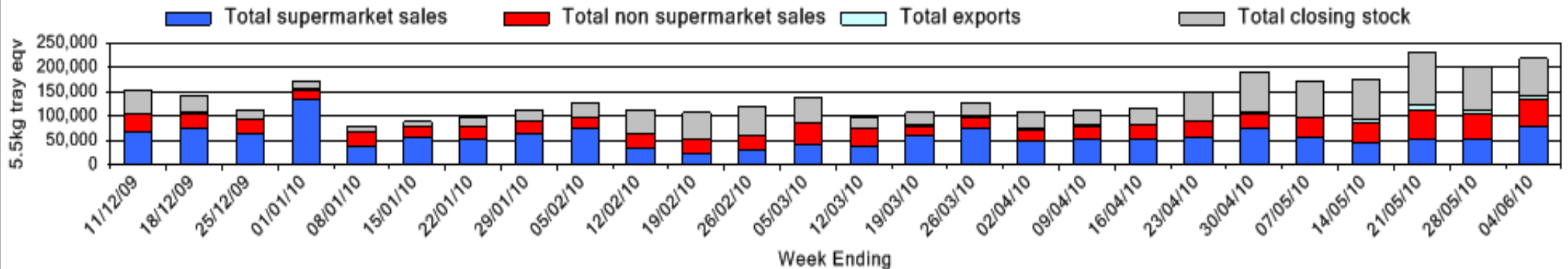
Week 22 contributors - Wholesalers

- | | |
|-----------------------------------|---|
| Costa Exchange Trading (Adelaide) | Romeos (Brisbane) |
| Dykes Bros (Melbourne) | Sculli & Co Pty Ltd (Melbourne) |
| Etherington (Perth) | Sinclair & Antico (Aust) Pty Ltd (Sydney) |
| Exotic Fruit Traders (Sydney) | The La Manna Group (Adelaide) |
| Kelly's (Melbourne) | The La Manna Group (Brisbane) |
| Mercer Mooney (Perth) | The La Manna Group (Melbourne) |
| Moraitis (Sydney) | United Fresh (Adelaide) |
| Murray Bros (Brisbane) | |

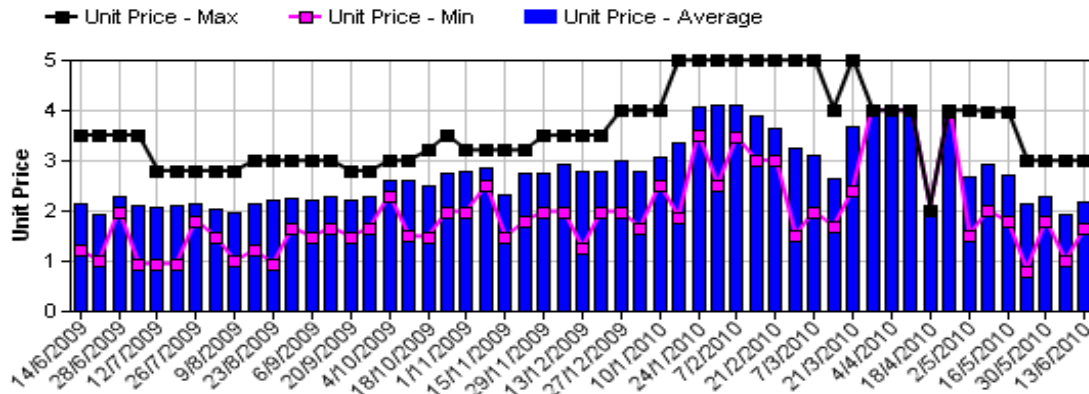
Sales Report including Direct Sales from Packhouses, Wholesale Sales and Stock on Hand at Wholesale Level

	Trays 5.5kg eqv (incl. Mod6 & P84)				Bulk 10Kg Cartons					Pre-Pack Kg					Total (5.5Kg Eqv)			
	Hass	Shepard	Other	Total	Hass	Shepard	Other	Total	5.5Kg Eqv	Hass	Shepard	Other	Total	5.5Kg Eqv	Hass	Shepard	Other	Total
NSW																		
Total supermarket sales																		
Total non supermarket sales	# Full data set not displayed because not enough NSW wholesalers contributed data this week																	
Total exports																		
Total sales	30,792		42	30,834	5,492			5,492	9,985	360			360	65	40,843		42	40,885
Total Stock on Hand																		
QLD																		
Total supermarket sales	15,186	935		16,121	2,145			2,145	3,900						19,086	935		20,021
Total non supermarket sales	9,733	102	55	9,890	192	1		193	351					10,082	104	55		10,241
Total exports	6,621			6,621	739			739	1,344	880			880	160	8,125			8,125
Total sales	31,540	1,037	55	32,632	3,076	1		3,077	5,595	880			880	160	37,293	1,039	55	38,386
Total Stock on Hand	33,005	56	155	33,216	138	49	51	238	433						33,256	145	248	33,649
SA & TAS																		
Total supermarket sales	4,859			4,859	568			568	1,033	247			247	45	5,937			5,937
Total non supermarket sales	3,696			3,696	562			562	1,022						4,718			4,718
Total exports																		
Total sales	8,555			8,555	1,130			1,130	2,055	247			247	45	10,654			10,654
Total Stock on Hand	5,929	3,194	264	9,387	1,448	192	5	1,645	2,991	132			132	24	8,586	3,543	273	12,402
VIC																		
Total supermarket sales	19,397			19,397	45			45	82	336			336	61	19,540			19,540
Total non supermarket sales	5,387	2,705	1,385	9,476	1,779		172	1,951	3,547						8,622	2,705	1,698	13,024
Total exports																		
Total sales	24,784	2,705	1,385	28,873	1,824		172	1,996	3,629	336			336	61	28,161	2,705	1,698	32,564
Total Stock on Hand	5,698	10,493	1,723	17,914	1,135	1,022	184	2,341	4,256						7,762	12,351	2,058	22,171
WA																		
Total supermarket sales	# Full data set not displayed because not enough WA wholesalers contributed data this week																	
Total non supermarket sales	# Full data set not displayed because not enough WA wholesalers contributed data this week																	
Total exports																		
Total sales	14,502		15	14,517	2,657	72	23	2,752	5,004						19,333	131	57	19,521
Total Stock on Hand																		
Total																		
Total supermarket sales	67,803	935		68,738	6,014			6,014	10,935	943			943	171	78,909	935		79,844
Total non supermarket sales	35,749	2,807	1,497	40,052	7,426	73	195	7,694	13,989						49,251	2,939	1,852	54,042
Total exports	6,621			6,621	739			739	1,344	880			880	160	8,125			8,125
Total sales	110,173	3,741	1,497	115,411	14,179	73	195	14,447	26,267	1,823			1,823	331	136,285	3,874	1,852	142,010
Total Stock on Hand	52,433	13,743	2,205	68,381	3,481	1,263	240	4,984	9,062	132			132	24	58,786	16,040	2,641	77,467

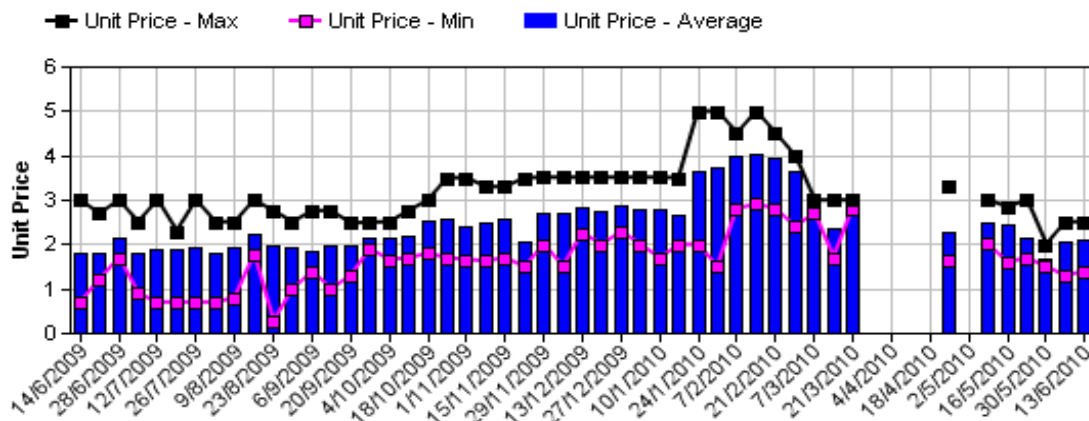
Weekly National Sales



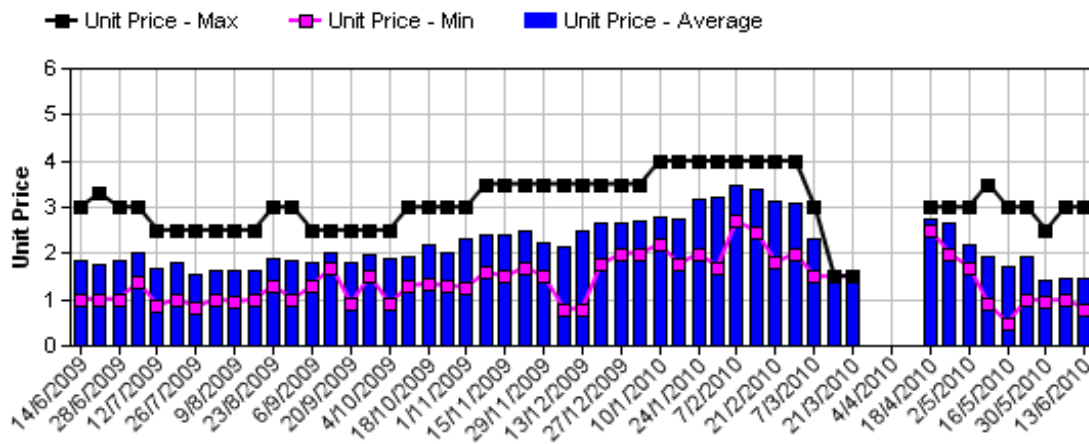
Hass Avocado Average Retail Prices - Sydney



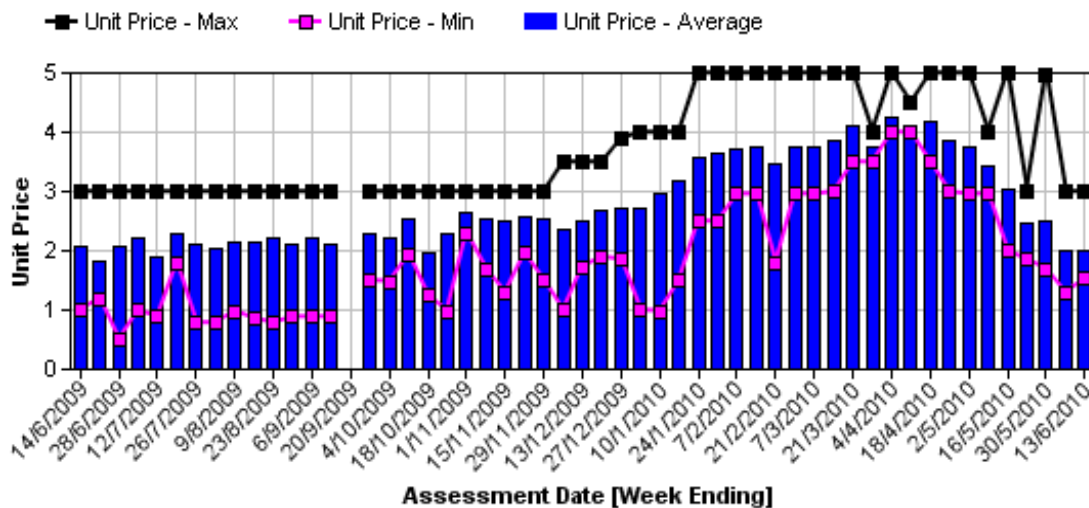
Hass Avocado Average Retail Prices - Melbourne



Hass Avocado Average Retail Prices - Brisbane

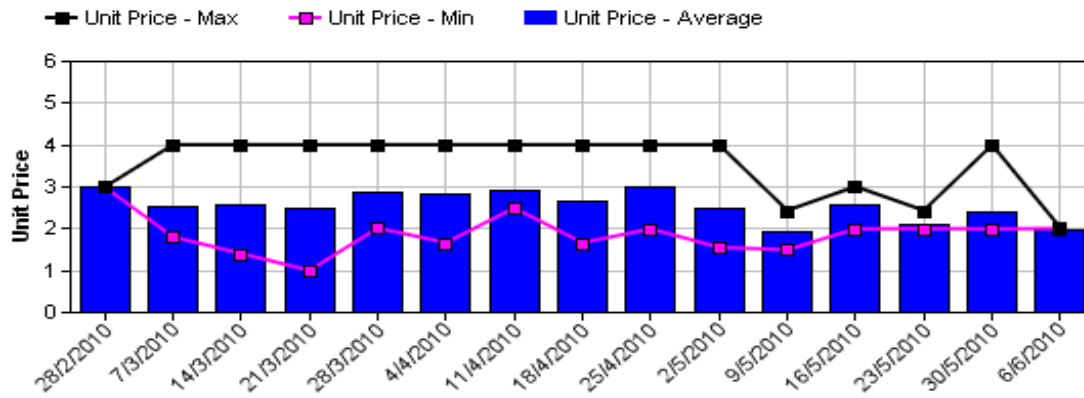


Hass Avocado Average Retail Prices - Perth

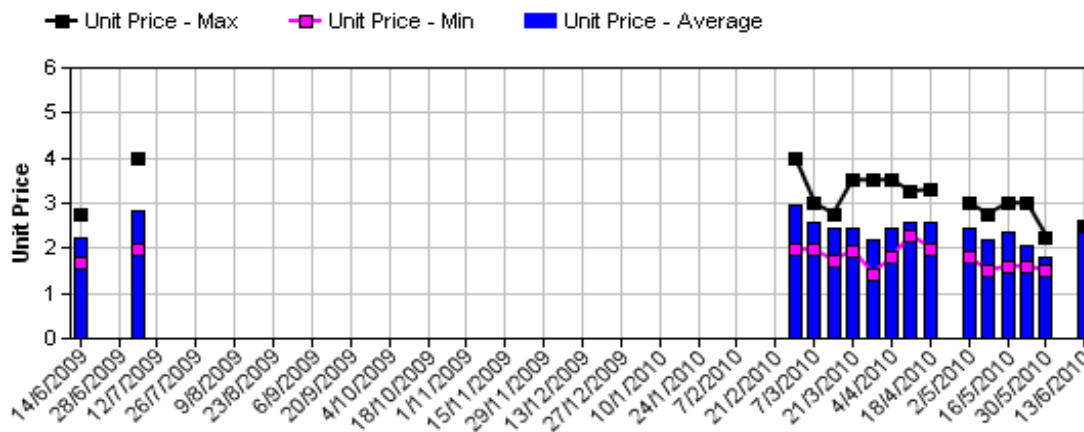


Assessment Date [Week Ending]

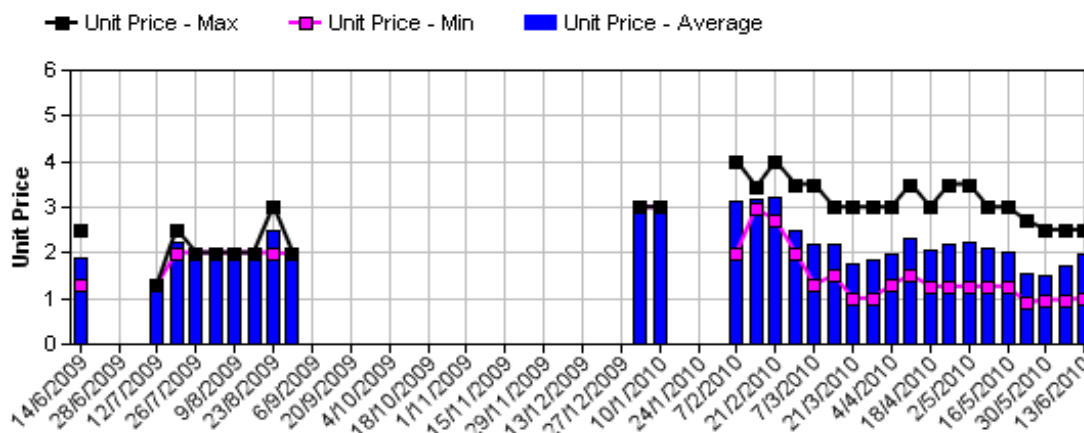
Shepard Avocado Average Retail Prices - Sydney



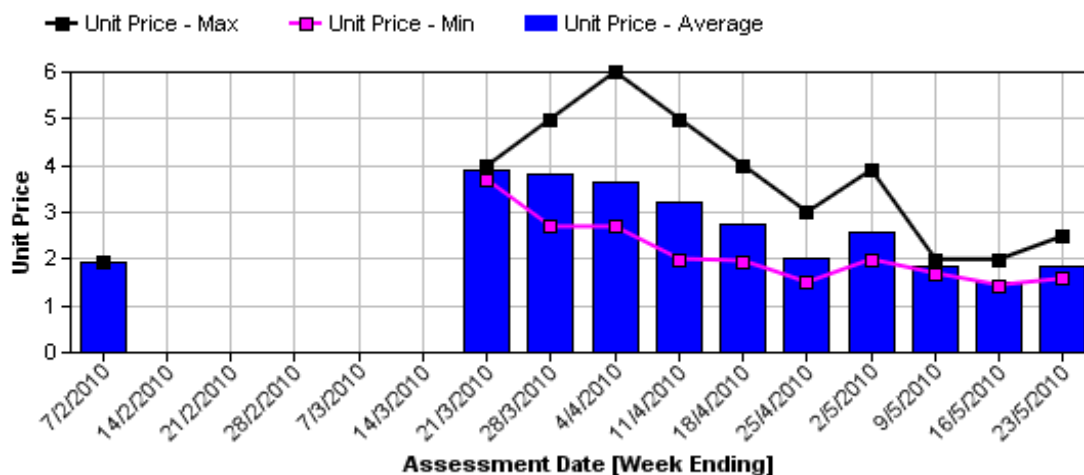
Shepard Avocado Average Retail Prices - Melbourne



Shepard Avocado Average Retail Prices - Brisbane



Shepard Avocado Average Retail Prices - Perth



Assessment Date [Week Ending]

Retail Prices by City, Store and Variety - 7th June 2010

Store	Var	Av Wt (g)	Unit Price	Special	Country of Origin
SYDNEY					
Woolworths	Hass	260	1.63	No	Aus
Woolworths	Hass	245	1.63	Store	Aus
Woolworths	Hass	190	1.63	Store	Aus
Coles	Hass	255	1.68	No	Aus
Coles	Lamb Hass	240	1.68	Store	Aus
Coles	Hass	285	1.68	Store	Aus
IC	Hass	300	1.99	No	Aus
IGA	Hass	240	1.99	Store	NS
IC	Hass	300	1.99	No	Aus
I	Hass	320	2.49	No	Aus
I	Hass	276	2.49	No	Aus
Foodworks	Hass	270	2.49	No	NS
IGA	Hass	265	2.49	No	NZ
IC	Hass	280	2.50	No	Aus
I	Hass	265	2.99	Store	Aus
I	Hass	270	2.99	No	Aus
BRISBANE					
I	Hass	240	0.79	Store	Aus
I	Hass	245	0.83	Store	Aus
Woolworths	Hass	240	0.83	Store	Aus
I	Shepard	195	0.99	Store	Aus
IC	Hass	180	0.99	Store	Aus
IC	Hass	165	0.99	Store	Aus
I	Hass	200	1.29	No	Aus
Coles	Hass	260	1.45	No	Aus
Coles	Hass	205	1.45	Store	Aus
Coles	Hass	250	1.45	Store	Aus
Woolworths	Hass	230	1.64	Store	Aus
Woolworths	Hass	240	1.64	No	Aus
IGA	Hass	200	1.79	No	NS
I	Hass	300	1.99	No	Aus
IGA	Hass	140	1.99	No	Aus
I	Shepard	290	2.49	Store	NS
I	Shepard	298	2.49	Store	Aus
I	Hass	270	2.99	Store	NS

Store	Var	Av Wt (g)	Unit Price	Special	Country of Origin
MELBOURNE					
I	Hass	290	1.39	No	NS
I	Hass	220	1.49	No	NS
I	Hass	240	1.69	No	NS
Coles	Hass	290	1.95	Cat	Aus
Coles	Hass	270	1.95	Cat	Aus
Coles	Hass	270	1.98	Cat	Aus
I	Hass	245	1.99	No	NS
IGA	Hass	295	2.29	No	Aus
I	Hass	265	2.29	No	Aus
Safeway	Hass	295	2.50	No	Aus
Safeway	Hass	310	2.50	No	Aus
I	Hass	310	2.50	No	Aus
I	Shepard	295	2.50	No	NS
Safeway	Hass	280	2.50	No	Aus
I	Sharwil	310	2.50	No	NS
PERTH					
Woolworths	Hass	185	1.53	Store	Aus
Woolworths	Hass	196	1.53	Store	Aus
Woolworths	Hass	210	1.55	Store	Aus
IS	Hass	260	1.59	Cat	NS
IGA	Hass	280	1.59	Cat	Aus
IGA	Hass	210	1.59	Cat	Aus
IGA	Hass	265	1.59	Cat	NS
I	Hass	240	1.95	No	Aus
Coles	Hass	240	1.98	No	Aus
Coles	Hass	230	1.98	Store	Aus
Coles	Hass	255	1.98	No	Aus
I	Hass	230	1.99	No	NS
I	Hass	270	2.49	No	Aus
IS	Hass	280	2.69	No	Aus
I	Hass	270	2.99	No	Aus
I	Hass	310	2.99	No	Aus

Store Codes

I = Independent Fruit and Vegetable stores
 IC = Independent Fruit and Vegetable store Chains
 IS = Independent Supermarkets

Special Codes

Cat = fruit is on catalogue special for that city this week
 Store = fruit is on special in that store only this week

Country of Origin Codes

Aus = display sign indicates fruit is from Australia
 NZ = display sign indicates fruit is from New Zealand
 NS = display sign doesn't say where fruit is from
 Mixed = display sign indicates fruit is from multiple origins

Size ranges based on 5.5kg trays

Size	Weight Range
28	185 - 208g
25	208 - 230g
23	230 - 245g
22	245 - 263g
20	263 - 290g
18	290 - 325g
16	325 - 363g

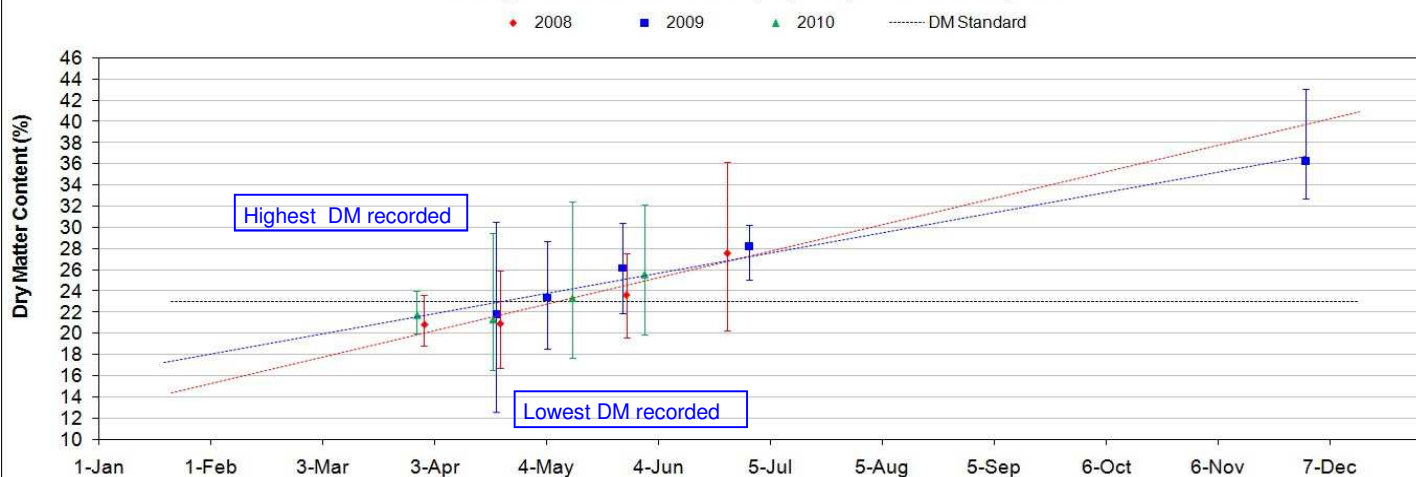


Avocado DM Content Report

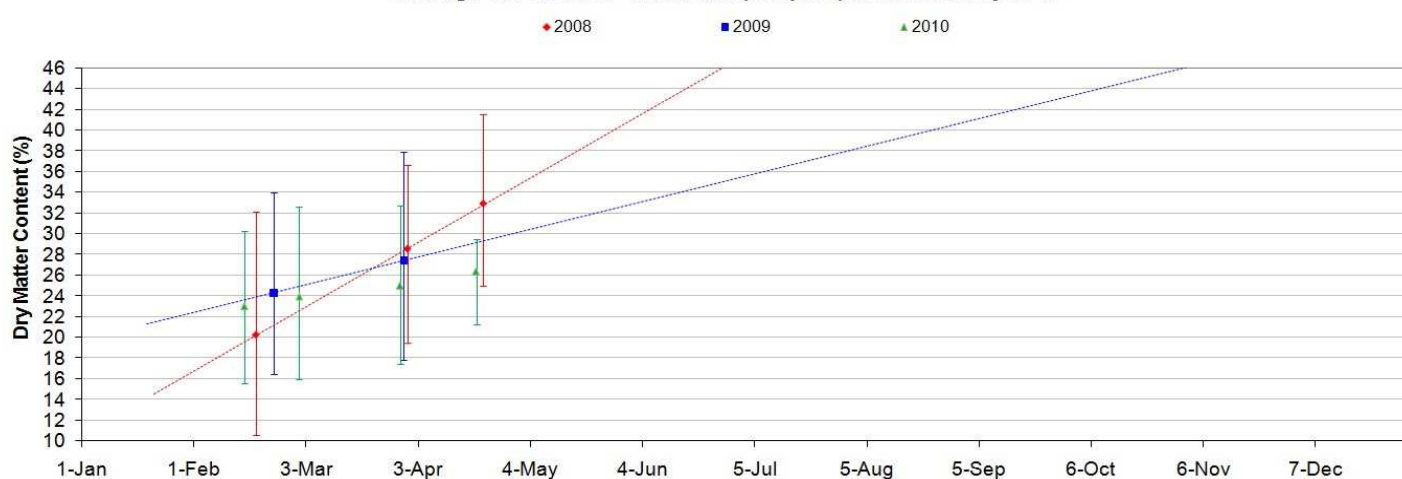
Fruit collected 31st May 2010

Dry Matter Intervals	Proportion of fruit tested for each dry matter interval 31st May 2010									
	NQ		CQ		SC	SQ	NNSW	CNSW	Tri	WA
	Hass	Shepard	Hass	Shepard	Hass	Hass	Hass	Hass	Hass	Hass
<=18%	0%		0%			0%	0%			
18.1%-20.9%	4%		8%			15%	0%			
21%-22.9%	12%		23%			15%	20%			
23%-28%	64%		55%			40%	80%			
27.1%-40%	20%		13%			30%	0%			
>40%	0%		0%			0%	0%			

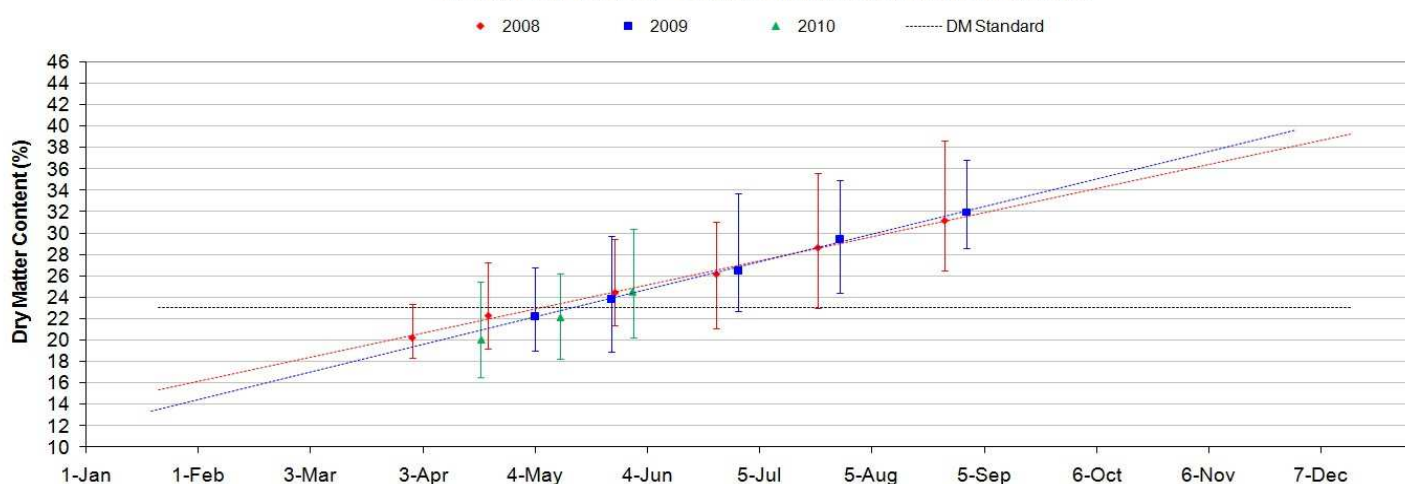
Average DM Content - North Qld (Hass) as of 31st May 2010



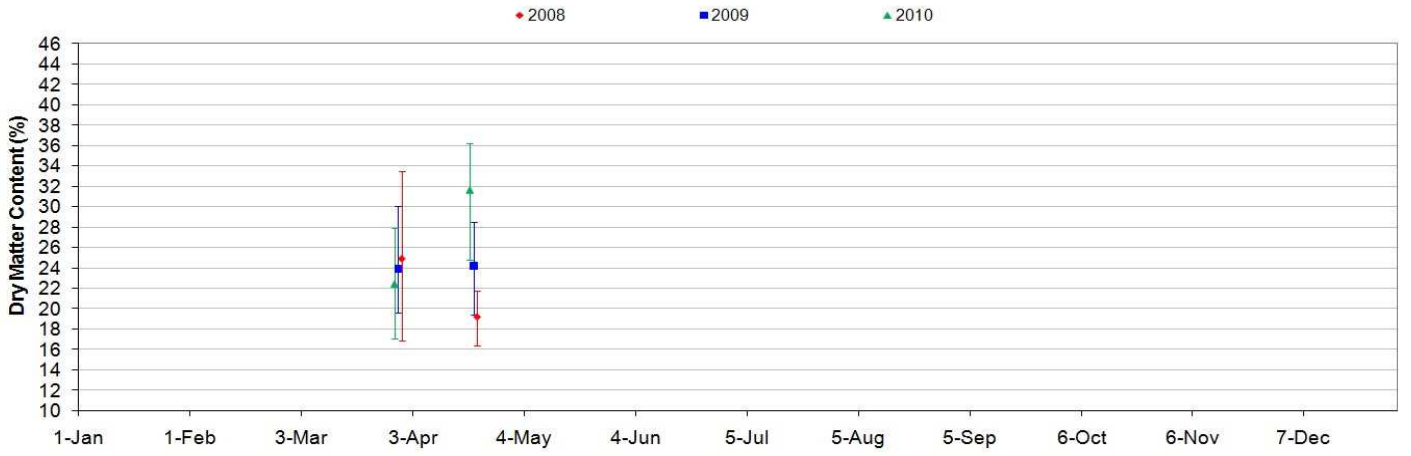
Average DM Content - North Qld (Shepard) as of 31st May 2010



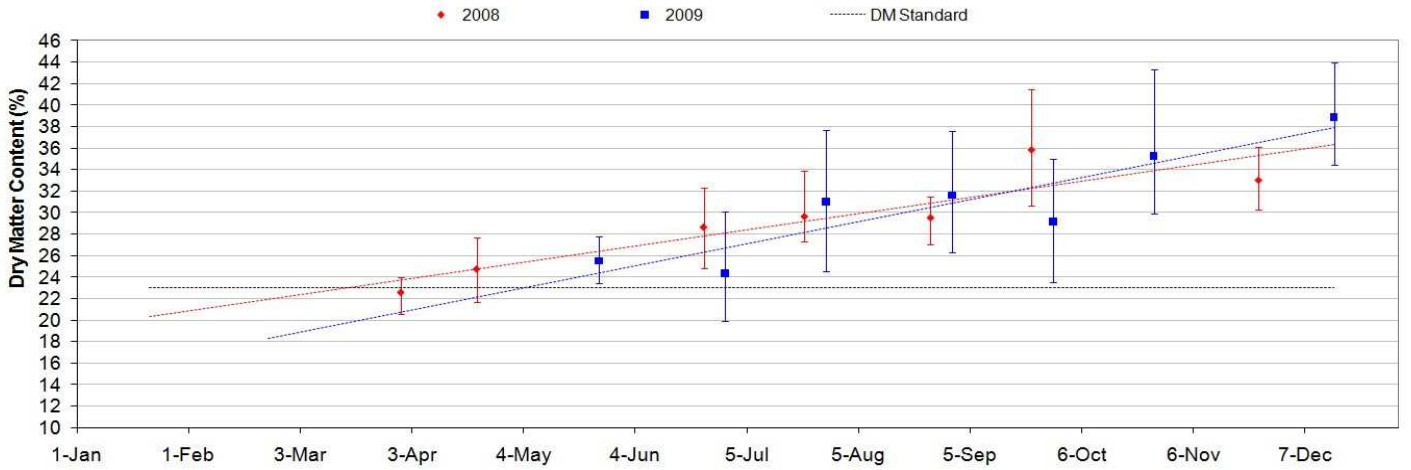
Average DM Content - Central Qld (Hass) as of 31st May 2010



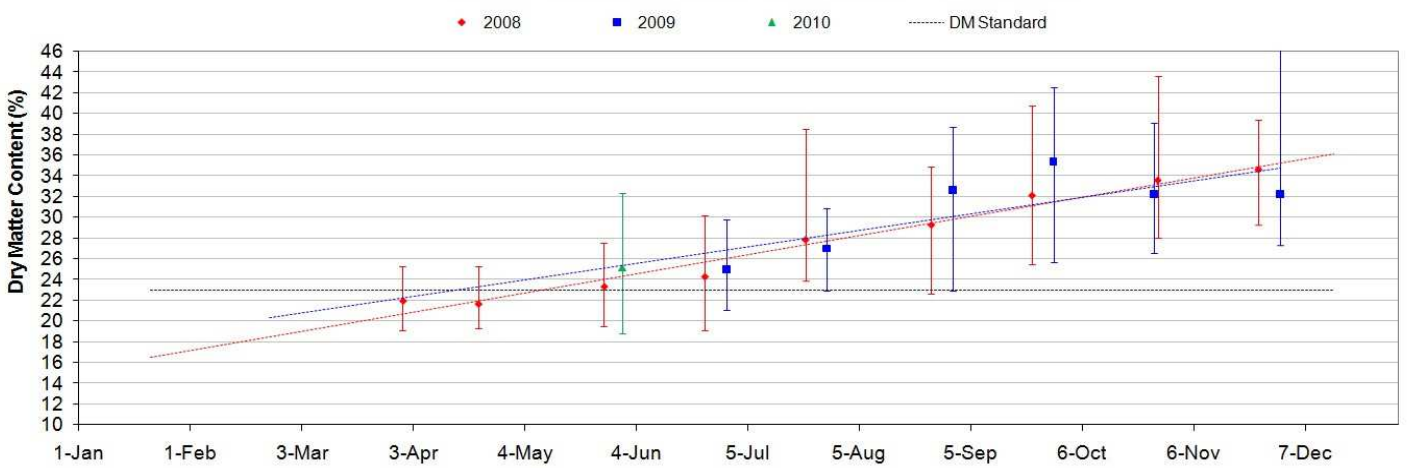
Average DM Content - Central Qld (Shepard) as of 31st May 2010



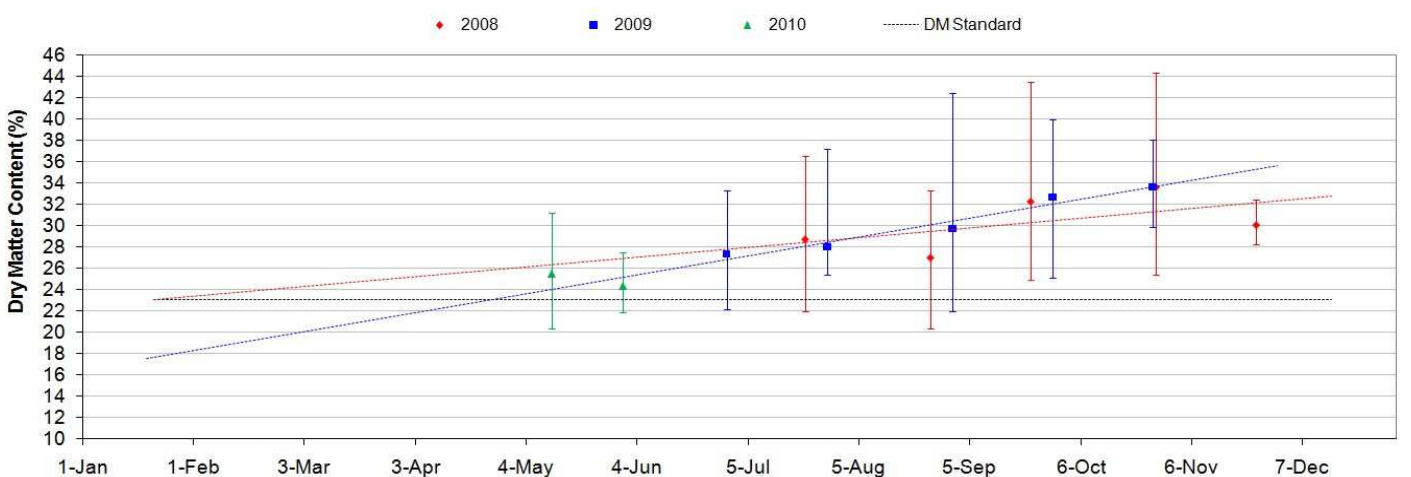
Average DM Content - Sunshine Coast (Hass) as of 31st May 2010



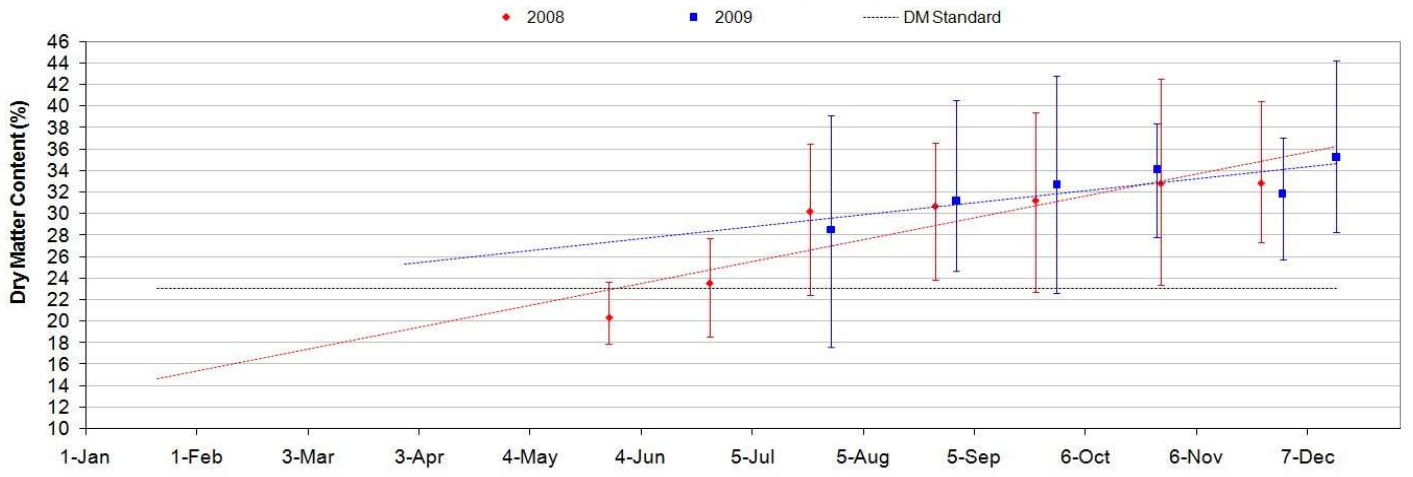
Average DM Content - South Qld (Hass) as of 31st May 2010



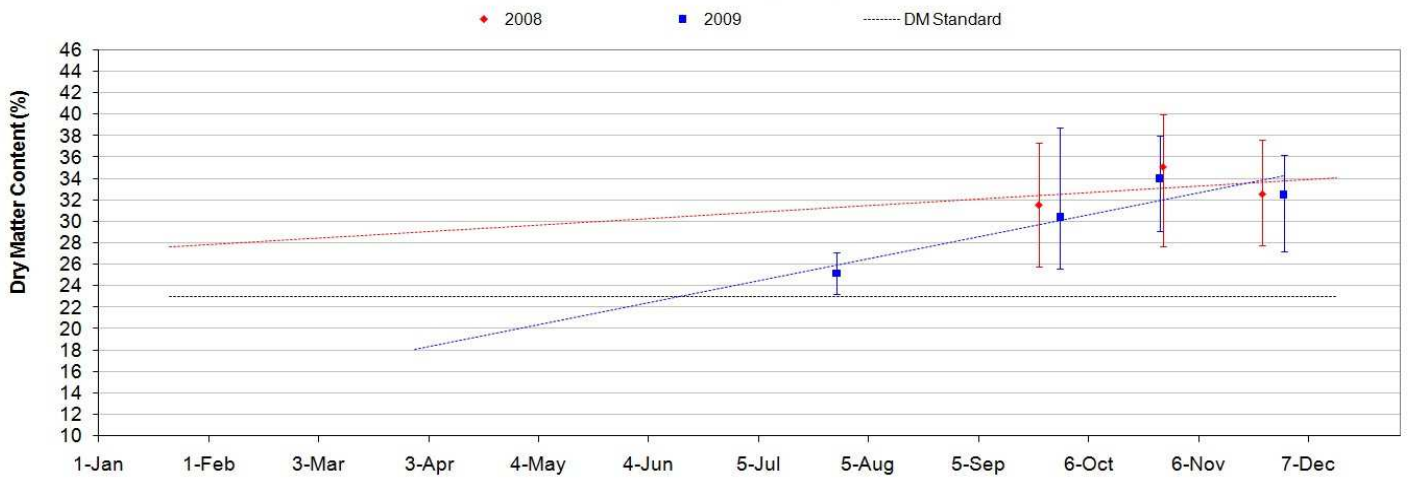
Average DM Content - Northern NSW (Hass) as of 31st May 2010



Average DM Content - Central NSW (Hass) as of 31st May 2010



Average DM Content - Tristate (Hass) as of 31st May 2010



Average DM Content - WA (Hass) as of 31st May 2010

