



INFOCADO WEEKLY REPORT

2nd June to 8th June 2007 (Wk 23)

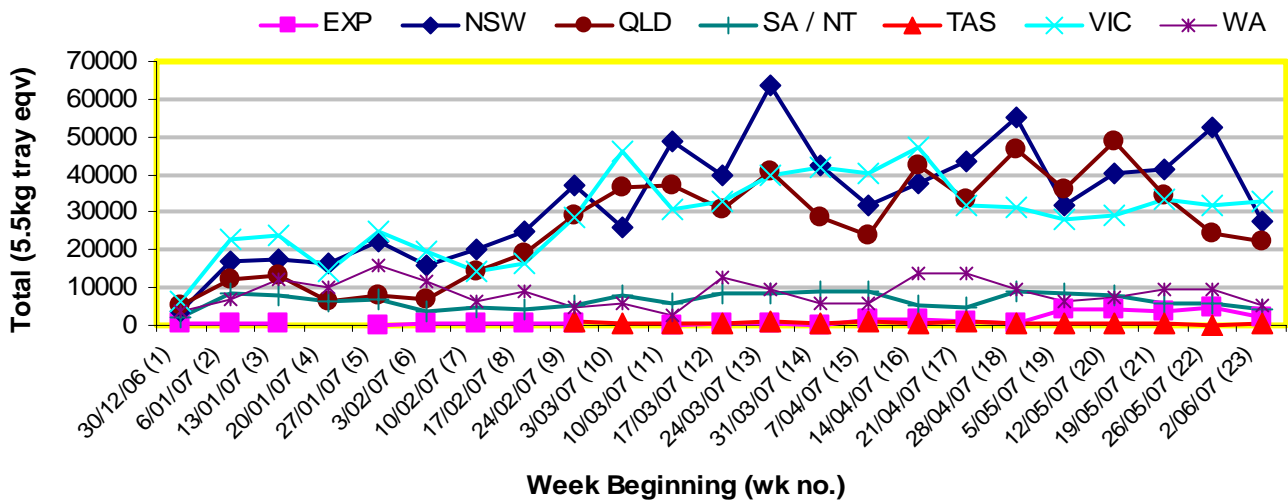
Green shading indicates dispatch data

Yellow shading indicates forecast data

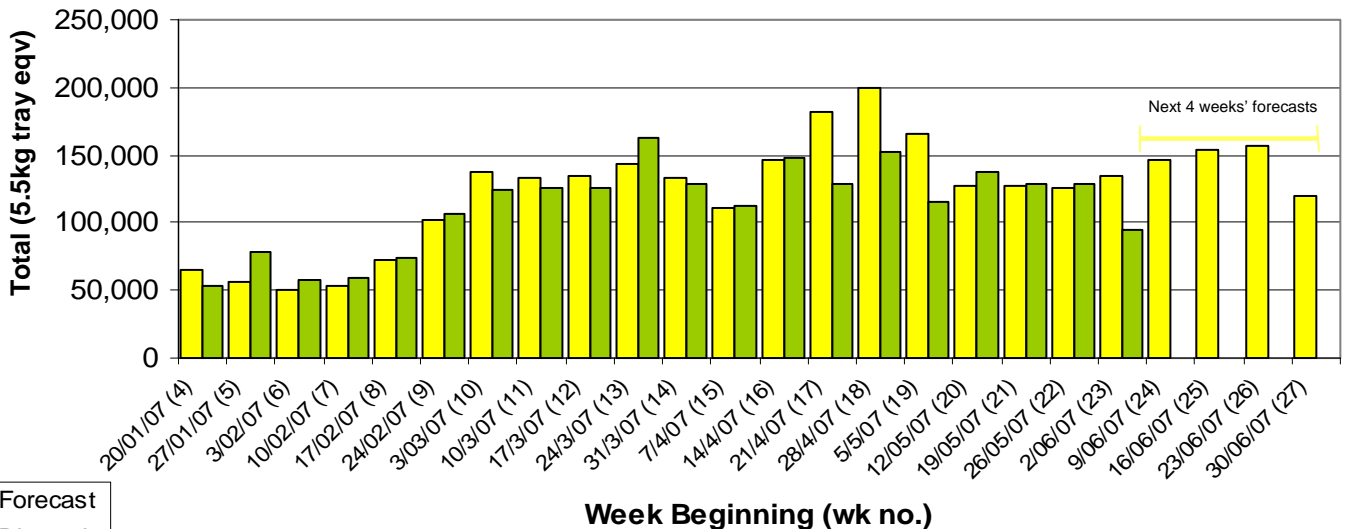
Industry Dispatches 2nd June to 8th June 2007 (Wk 23)

Dest. State	5.5kg										Bulk	P/PK	Other	5.5Kg Eqv Trays All	
	<16	16	18	20	22	23	25	28	28+	Total					
EXP									1,146	744	1,890	80	110		2,055
NSW	117	644	3,347	6,291	1,468	4,115	3,591	1,694	603	21,870	2,626	5,456		27,637	
QLD	2	451	1,240	467	1,003	1,626	7,149	3,403	35	15,376	2,954	7,854	300	22,230	
SA / NT				147			54	2,645	357	3,203	664	66		4,422	
TAS								720		720				720	
VIC	53	2,088	2,493	7,976	1,835	6,636	2,555	1,431	623	25,690	3,192	7,687		32,892	
WA			41	247		1,479	2,304	288		4,359	431	441		5,223	
Total	172	3,183	7,121	15,128	4,306	13,910	18,964	8,319	2,005	73,108	9,947	21,614	300	95,178	

Throughput Australian avocados by destination State Throughput 1st January 2007 to date = 2,426,075 5.5kg tray eqv



Dispatch vs weekly forecast for all varieties and all packs (20th January 2007 to 6th July 2007)



Major Capital City Weather Report – week ahead

City	Wed	Thur	Fri	Sat	Public Hols	Upcoming school Hols
Brisbane	22°	21°	20°	20°		23rd June—9th July
Melbourne	13°	14°	15°	16°		30th June—15th July
Perth	22°	19°	19°	19°		7th July—23rd July
Sydney	15°	15°	15°	16°		30th June—15th July

Forecast Data (Week 23-27)

Variety	Trays - Total	Bulk	P/Pk	Proc	All - Total
	5.5Kg Eqv	10Kg	Kg	Kg	5.5Kg Eqv
Week 23—begin 2/6/07					
Bacon		180			327
Hass	10,8590	9,792	15,000	2,500	129,576
Pinkerton	750	500			1,659
Sharwil	1,280	80			1,425
Wurtz	1,050	130			1,286
Week Total	111,670	10,682	15,000	2,500	134,274
Week 24—begin 9/6/07					
Bacon		180			327
Hass	120,601	9,753	15,900	2,500	141,680
Pinkerton	750	300			1,295
Sharwil	1,840	390			2,549
Wurtz	800	100			982
Week Total	123,991	10,723	15,900	2,500	146,833
Week 25—begin 16/6/07					
Bacon		180			327
Hass	126,114	11,122	16,500	1,500	149,609
Pinkerton	750	300			1,295
Sharwil	1,590	390			2,299
Wurtz	800	100			982
Week Total	129,254	12,092	16,500	1,500	154,512
Week 26—begin 23/6/07					
Bacon		180			327
Hass	129,190	10,886	16,000		151,892
Pinkerton	750	300			1,295
Sharwil	1,590	390			2,299
Wurtz	500	100			682
Week Total	132,030	11,856	16,000		156,495
Week 27—begin 30/6/07					
Bacon		230			418
Fuerte	50	10			68
Hass	98,514	9,182			115,209
Pinkerton	750	300			1,295
Sharwil	1,590	390			2,299
Wurtz	500	100			682
Week Total	101,404	10,212			119,971

Dispatch Data (Week 23—begin 2/6/07)

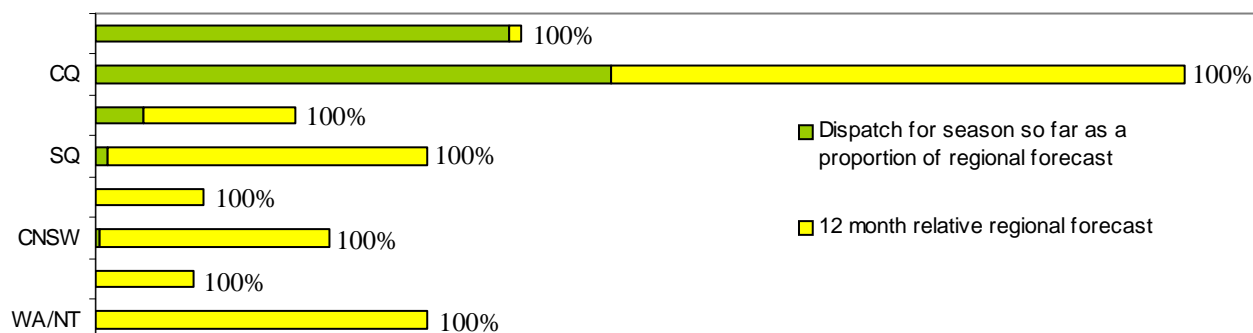
Variety	Trays	Bulk	P/PK	Proc	5.5Kg Eqv
	5.5kg eqv	10Kg	Kg	Kg	Total Trays
Bacon		176			320
Hass	70,173	9,382	21,614		91,161
Pinkerton	184	162		300	534
Sharwil	1,399	116			1,610
Shepard		53			96
Wurtz	1,352	58			1,457
Total	73,108	9,947	21,614	300	95,178

NB: Very wet weather in SE QLD affected dispatch versus forecasted dispatch for this report.

Week 23 contributors

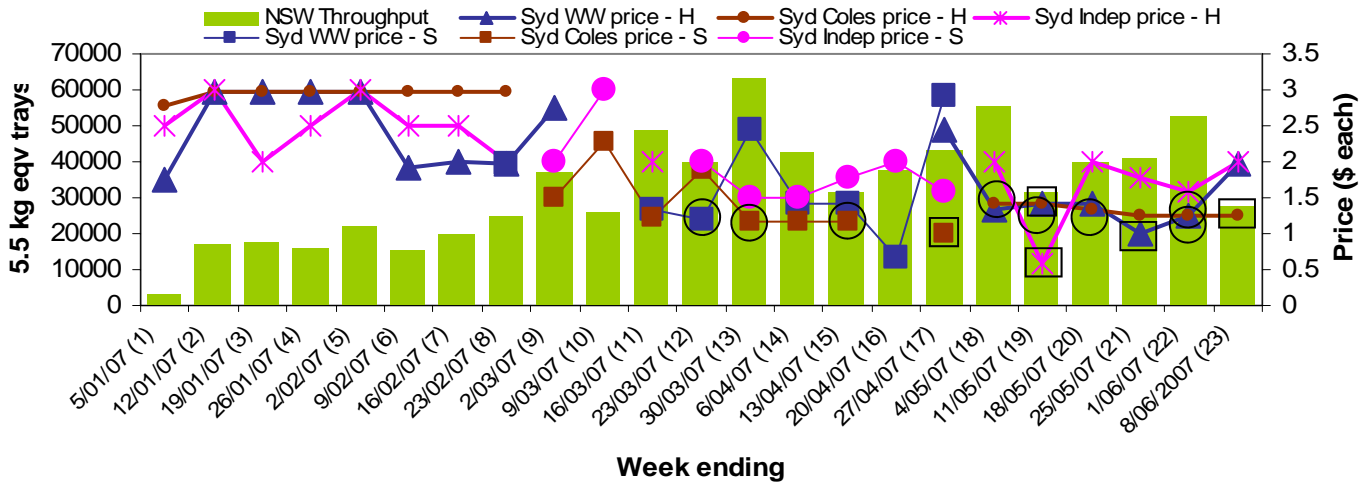
Balmoral Orchard
 BT & RG Pegg
 C F Fechner
 Coastal Avocados
 Donovan Avocados
 G & C Christensen
 G & J Krenske
 G & R Ernest
 Goodlife Orchards
 Googa Farms
 Green Pear Avocado
 J & K Hummer
 JC & SK Smythe
 Lavers Orchards
 Midcoast Avocados
 Mt Binga Orchards Pty Ltd
 Natures Fruit Company
 One Harvest
 RM & KL Cornwall
 Simpsons Farms Pty Ltd
 Sunfresh
 Sunny Bluff Produce Pty Ltd
 Tinaroo Falls Avocado Trust
 Touchwood Farming
 Tropicado Avocados
 WA & GM Jonsson
 Willow Creek Strawberries Pty Ltd

Percentage dispatched by region (Based on seasonal forecast - 2007)

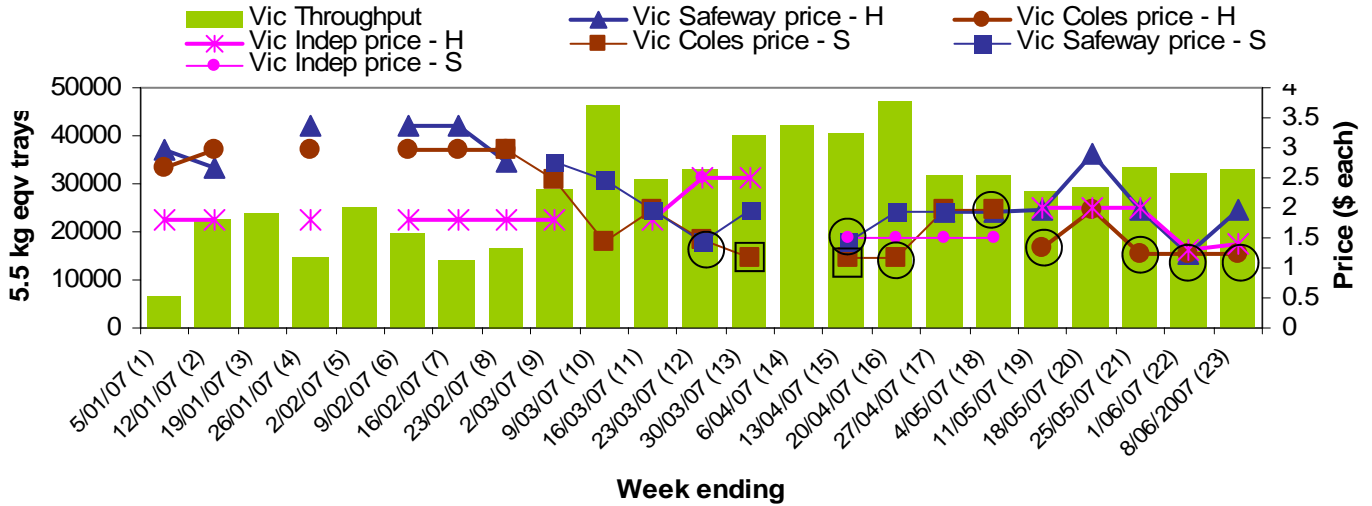


NB: H = Hass, S= Shepard, ○ = catalogue special □ = store special

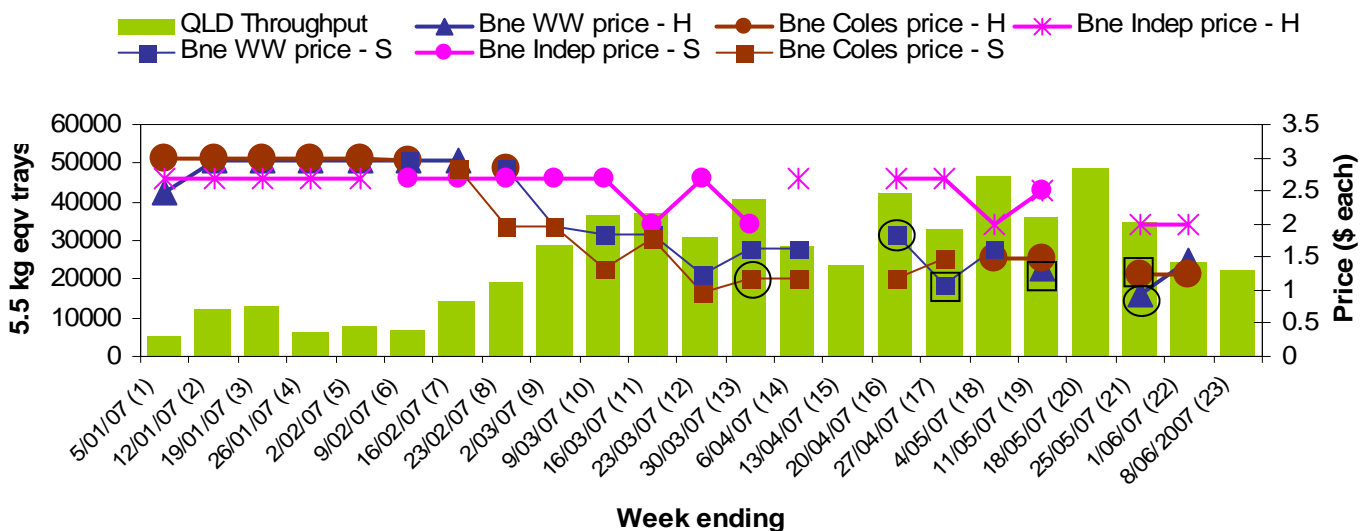
Sydney Avocado Retail Prices vs Dispatches - Destination state NSW



Melbourne Avocado Retail Prices vs Dispatches - Destination state Vic



Brisbane Avocado Retail Prices vs Dispatches - Destination state Qld



For more detailed reports please go to www.avocado.org.au and login to Infocado. Instructions on accessing reports are available in your Infocado Information kit under 'Retrieving information'

For further assistance please contact: Joanna Embry, Ph: 07 3391 2344, Email: infocado@avocado.org.au