



INFOCADO WEEKLY REPORT

7th - 13th June 2008 (Wk 24)

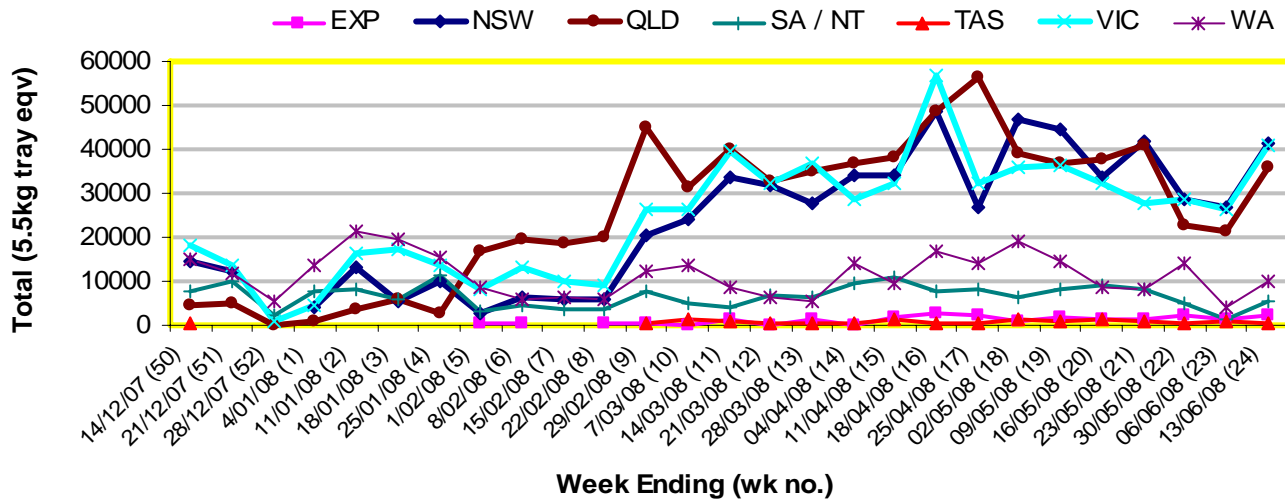
Green shading indicates dispatch data

Yellow shading indicates forecast data

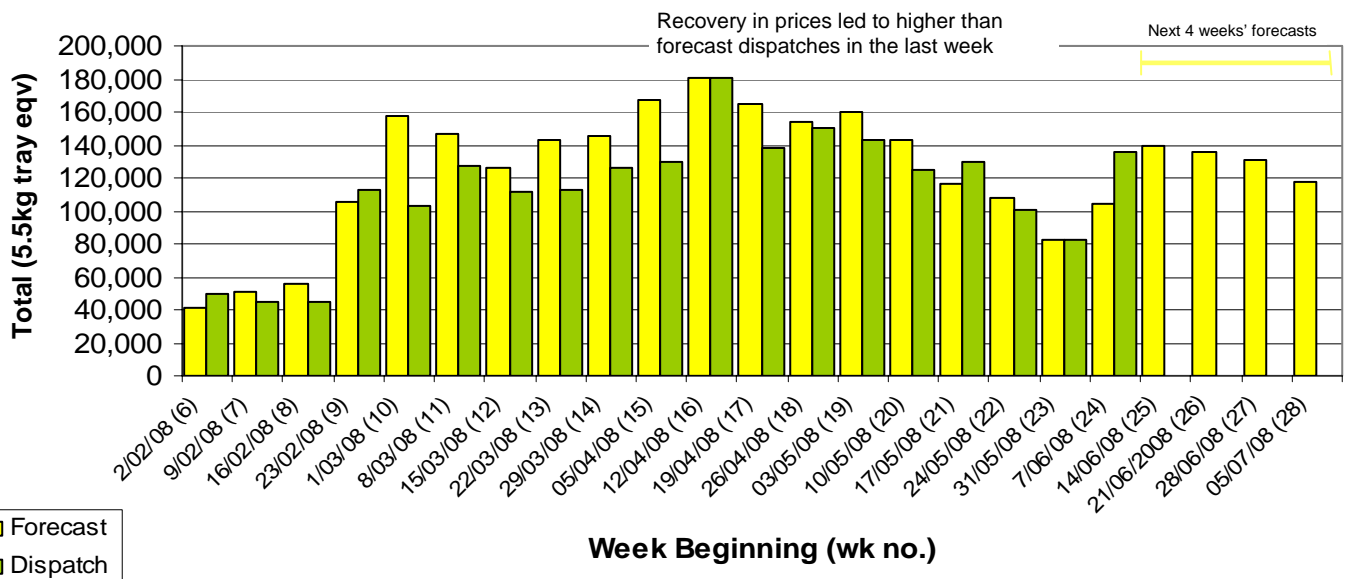
Industry Dispatches 7th - 13th June 2008 (Wk 24)

Dest. State	5.5kg <16	5.5kg 16	5.5kg 18	5.5kg 20	5.5kg 22	5.5kg 23	5.5kg 25	5.5kg 28	5.5kg 28+	5.5kg Total	Bulk 10Kg	P/PK Kg	Oil Kg	Other Kg	5.5Kg Eqv Trays All Total
EXP								748	412	1,160	66				1,280
NSW	95	2,618	9,296	8,415	1,770	8,207	2,963	2,310	158	35,832	2,152	8,492		200	41,325
QLD	13	345	1,823	7,045	137	7,254	5,818	2,898	376	25,709	4,204	5,738	5,600	1,866	35,753
SA / NT		19	129	498		2,090	1,708	506	10	4,960	339	240			5,620
TAS								519		519					519
VIC	174	5,851	14,467	9,847	872	4,127	1,459	529	8	37,334	1,427	5,556			40,939
WA	8	55	169	1,375		2,984	1,435	208		6,234	1,976	1,352			10,073
Total	290	8,888	25,884	27,180	2,779	24,662	13,902	7,199	964	111,748	10,164	21,378	5,600	2,066	135,509

Throughput Australian avocados by destination State Throughput 1st January 2008 to date = 2,388,255 5.5kg tray eqv



Dispatch vs weekly forecast for Australian Avocados - all varieties and all packs (2nd February 2008 to 11th July 2008)



Major Capital City Weather Report – week ahead

City	Tue	Wed	Thu	Fri	Public Hols	School Holidays
Brisbane	23°	23°	21°	24°	13th Aug - Royal Show	28th Jun - 13th Jul
Melbourne	17°	18°	15°	15°	4th Nov - Melb. Cup Day	28th Jun - 13th Jul
Perth	18°	18°	18°	19°	29th Sept - Queen's B/day	5th Jul - 20th Jul
Sydney	19°	20°	19°	20°	4th Aug - Bank Holiday	5th Jul - 20th Jul

Forecast Data (Week 24-28)

Dispatch Data (Week 24 - begin 7/06/08)

Variety	Trays - Total	Bulk	P/Pk	Oil	All - Total
	5.5Kg Eqv	10Kg	Kg	Kg	5.5Kg Eqv
Week 24 - begin 7/06/08					
Bacon		80			145
Fuerte	100	100			282
Hass	82,196	4,880	10,000	4,000	93,614
Pinkerton	60	250			515
Sharwil	2,498	530	1,500		3,735
Wurtz	5,350	20			5,386
Week Total	90,204	5,860	11,500	4,000	103,677
Week 25 - begin 14/06/08					
Bacon		120			218
Hass	115,146	6,617	30,300	5,400	133,668
Pinkerton	50	50			141
Sharwil	3,830	640	1,500		5,267
Wurtz	450	20			486
Week Total	119,476	7,447	31,800	5,400	139,780
Week 26 - begin 21/06/08					
Bacon		120			218
Hass	112,159	5,702	20,400	5,400	127,217
Sharwil	2,770	400	1,000		3,679
Wurtz	5,150	10			5,168
Week Total	120,079	6,232	21,400	5,400	136,283
Week 27 - begin 28/06/08					
Bacon		120			218
Hass	109,032	5,600	20,400	5,400	123,905
Sharwil	1,070	30	1,000		1,307
Wurtz	5,000				5,000
Week Total	115,102	5,750	21,400	5,400	130,430
Week 28 - begin 5/07/08					
Bacon		40			73
Fuerte		80			145
Hass	103,304	4,400	20,400	5,400	115,995
Sharwil	1,000		1,000		1,182
Week Total	104,304	4,520	21,400	5,400	117,395

Variety	Trays	Bulk	P/Pk	Oil	Other	5.5Kg Eqv
	5.5kg eqv	10Kg	Kg	Kg	Kg	Total Trays
Bacon		120				218
Hass	106,032	9,407	17,616	5,600	2,066	127,733
Sharwil	3,230	251	3,762			4,370
Wurtz	2,487	386				3,189
Total	111,749	10,164	21,378	5,600	2,066	135,510

Week 24 contributors

Balmoral Orchard
 BT & RG Pegg
 Coastal Avocados
 Donovan Avocados
 G & C Christensen
 G & J Krenske
 I & A Tolson
 JC & SK Smythe
 Lavers Orchards
 Mountain Fresh
 Natures Fruit Company
 One Harvest
 Simpsons Farms Pty Ltd
 Sunfresh
 Sunny Bluff Produce Pty Ltd
 Sunnyspot Packhouse PL
 Tinaroo Falls Avocado Trust
 Touchwood Farming
 Tropicado Avocados

Percentage dispatched by region (Based on seasonal forecast - 2008)

