



INFOCADO WEEKLY REPORT

14th - 20th June 2008 (Wk 25)

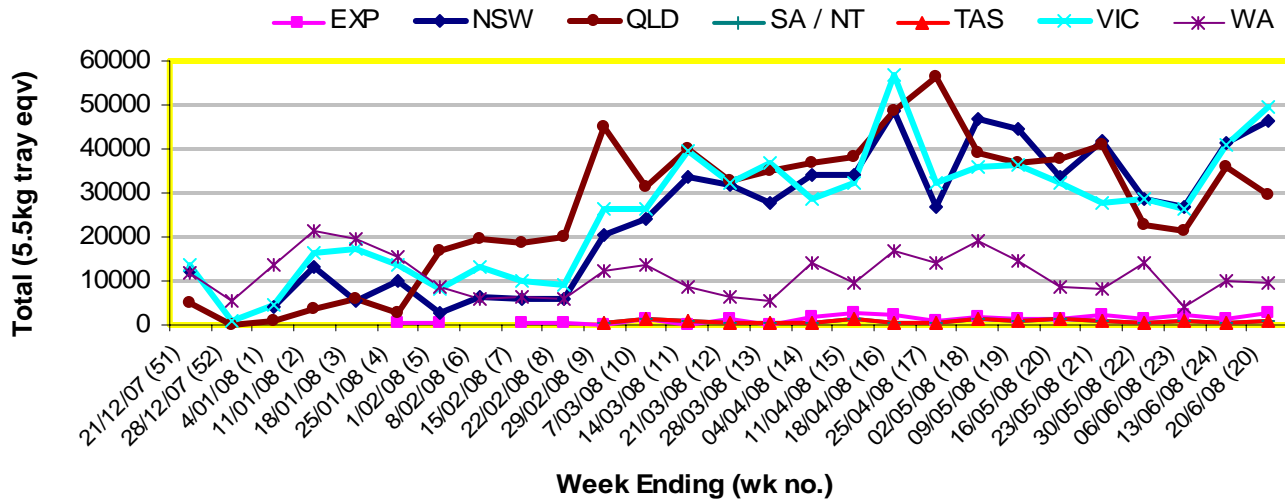
Green shading indicates dispatch data

Yellow shading indicates forecast data

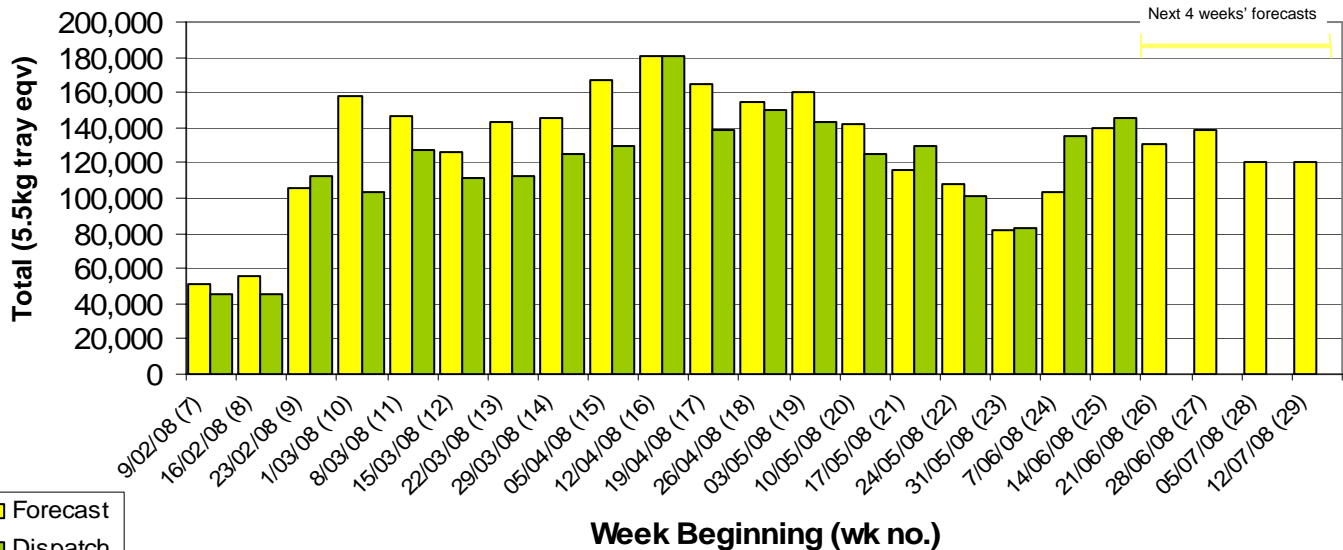
Industry Dispatches 14th - 20th June 2008 (Wk 25)

Dest. State	5.5kg									Total	Bulk 10Kg	P/PK Kg	Oil Kg	5.5Kg Eqv Trays All Total
	<16	16	18	20	22	23	25	28	28+					
EXP							42	1,639	1,061	2,742	65			2,860
NSW	265	3,110	9,013	13,987	2,146	3,848	3,325	3,311	923	39,928	2,932	6,332		46,410
QLD	54	516	2,167	7,857	490	5,296	3,911	1,787	1,533	23,611	2,850	4,774		29,661
SA / NT	1	22	108	321	101	1,530	4,220	480		6,783	288			7,307
TAS							890			890				890
VIC	1,470	3,414	7,411	12,366	1,824	8,662	3,251	1,161	124	39,683	4,448	9,194		49,442
WA			179	3,966		1,631	257	39		6,072	1,792	208		9,368
Total	1,790	7,062	18,878	38,497	4,561	20,967	15,896	8,417	3,641	119,709	12,375	20,508		145,938

Throughput Australian avocados by destination State Throughput 1st January 2008 to date = 2,534,193 5.5kg tray eqv



Dispatch vs weekly forecast for Australian Avocados - all varieties and all packs (9th February 2008 to 18th July 2008)



Major Capital City Weather Report – week ahead

City	Tue	Wed	Thu	Fri	Public Hols	School Holidays
Brisbane	22°	23°	24°	23°	13th Aug - Royal Show	28th Jun - 13th Jul
Melbourne	16°	16°	15°	16°	4th Nov - Melb. Cup Day	28th Jun - 13th Jul
Perth	22°	18°	19°	19°	29th Sept - Queen's B/day	5th Jul - 20th Jul
Sydney	18°	19°	21°	18°	4th Aug - Bank Holiday	5th Jul - 20th Jul

Forecast Data (Week 25-29)

Variety	Trays - Total	Bulk	P/Pk	Oil	All - Total
	5.5Kg Eqv	10Kg	Kg	Kg	5.5Kg Eqv
Week 25 - begin 14/06/08					
Bacon		120			218
Hass	115,146	6,617	30,300	5,400	133,668
Pinkerton	50	50			141
Sharwil	3,830	640	1,500		5,267
Wurtz	450	20			486
Week Total	119,476	7,447	31,800	5,400	139,780
Week 26 - begin 21/06/08					
Bacon		192			349
Fuerte	200	50			291
Hass	106,439	5,067	20,400	5,400	120,343
Lamb Hass	300				300
Sharwil	3,070	460	1,000		4,088
Wurtz	5,150	10			5,168
Week Total	115,159	5,779	21,400	5,400	130,539
Week 27 - begin 28/06/08					
Bacon		160			291
Fuerte		48			87
Hass	115,914	6,160	20,400	5,400	131,805
Lamb Hass	200				200
Sharwil	1,070	30	1,000		1,307
Wurtz	5,300				5,300
Week Total	122,484	6,398	21,400	5,400	138,990
Week 28 - begin 5/07/08					
Bacon		40			73
Fuerte		80			145
Hass	106,234	4,430	20,400	5,400	118,980
Lamb Hass	100				100
Sharwil	1,070	30	1,000		1,307
Week Total	107,404	4,580	21,400	5,400	120,604
Week 29 - begin 12/07/08					
Bacon		40			73
Fuerte		160			291
Hass	106,234	4,530	20,500	5,400	119,179
Lamb Hass	100				100
Sharwil	1,000		1,000		1,182
Week Total	107,334	4,730	21,500	5,400	120,825

Dispatch Data (Week 25 - begin 14/06/08)

Variety	Trays	Bulk	P/Pk	Oil	5.5Kg Eqv
	5.5kg eqv	10Kg	Kg	Kg	Total Trays
Bacon		120			218
Fuerte	940	116			1,151
Hass	111,195	10,661	18,176		133,884
Lamb Hass	177	42			253
Sharwil	4,547	725	2,332		6,289
Wurtz	2,852	711			4,145
Total	119,711	12,375	20,508		145,940

Week 25 contributors

Balmoral Orchard
 Coastal Avocados
 Donovan Avocados
 G & C Christensen
 G & J Krenske
 I & A Tolson
 JC & SK Smythe
 Lavers Orchards
 Mount Hallen Avocados
 Mountain Fresh
 Mt Binga Orchards Pty Ltd
 Natures Fruit Company
 One Harvest
 Simpsons Farms Pty Ltd
 Sunfresh
 Sunny Bluff Produce Pty Ltd
 Sunnyspot Packhouse PL
 Tinaroo Falls Avocado Trust
 Touchwood Farming
 Tropicado Avocados

Percentage dispatched by region (Based on seasonal forecast - 2008)

