



# INFOCADO WEEKLY REPORT

21st - 27th June 2008 (Wk 26)

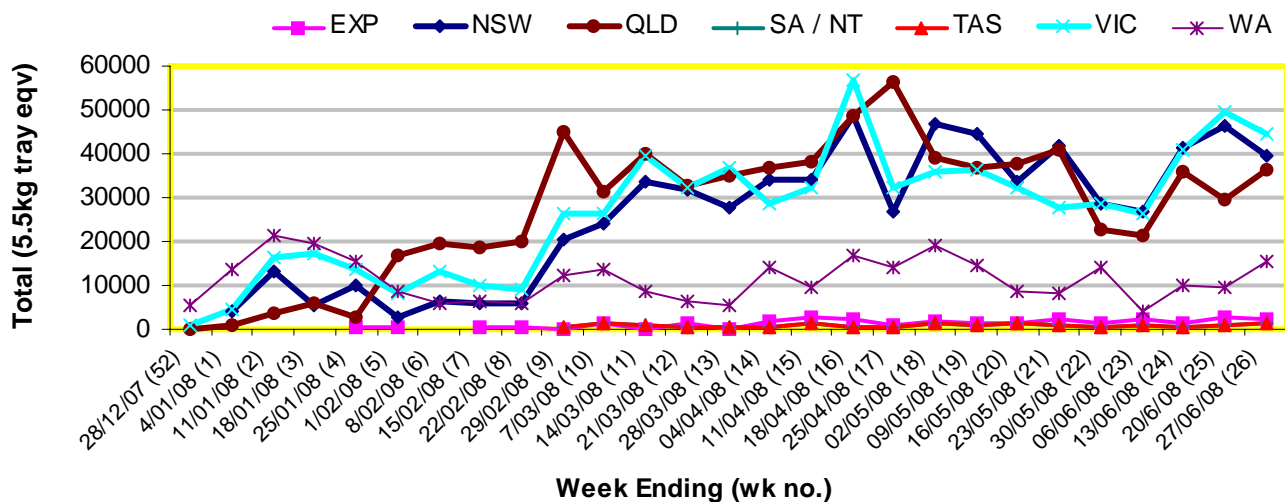
Green shading indicates dispatch data

Yellow shading indicates forecast data

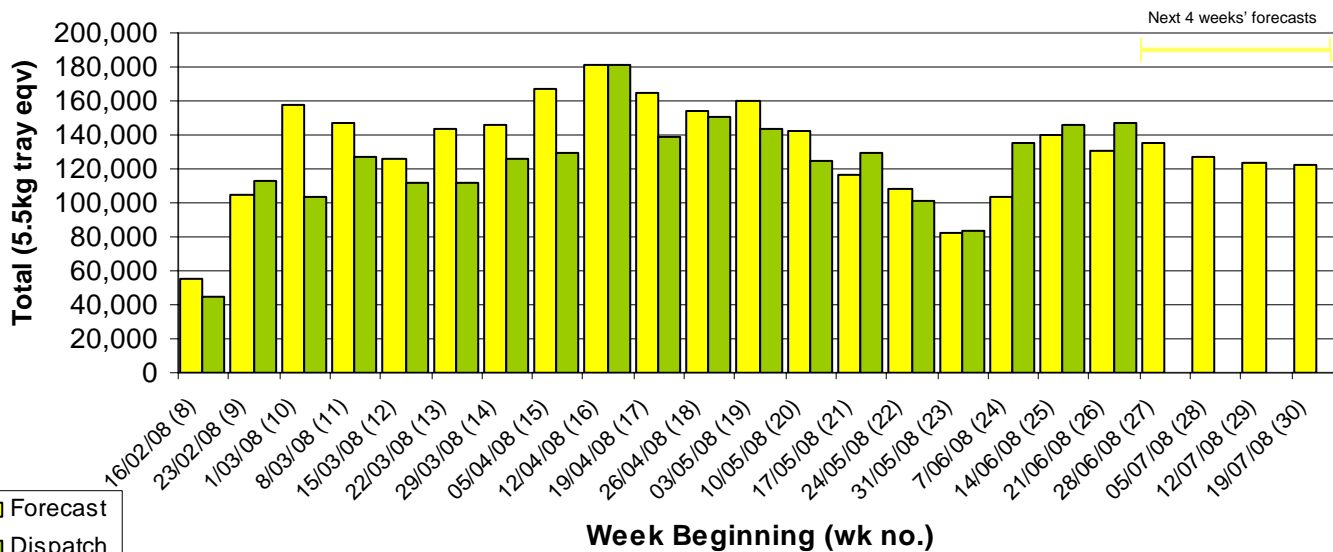
## Industry Dispatches 21st - 27th June 2008 (Wk 26)

Dest. State	5.5kg									5.5kg Total	Bulk 10Kg	P/PK Kg	Oil Kg	Other Kg	5.5Kg Eqv Trays All Total						
	<16	16	18	20	22	23	25	28	28+												
EXP										1,100	971					2,071	130				2,307
NSW	203	1,270	5,414	4,798	2,106	10,200	2,915	2,312	411						29,629	3,590	19,364		400	39,750	
QLD	140	185	2,503	8,727	144	7,968	5,775	1,860	1,022						28,324	3,404	3,942	5,400	275	36,262	
SA / NT	135	5	30	433	116	280	4,610	1,128							6,737	376	240			7,465	
TAS										1,335					1,335					1,335	
VIC	95	3,153	10,088	6,989	942	8,702	4,070	1,171	65						35,275	4,378	6,480			44,413	
WA	5	111	566	3,026	177	2,771	997	661							8,314	3,822	816			15,411	
<b>Total</b>	<b>578</b>	<b>4,724</b>	<b>18,601</b>	<b>23,973</b>	<b>3,485</b>	<b>29,921</b>	<b>19,702</b>	<b>8,232</b>	<b>2,469</b>						<b>111,685</b>	<b>15,700</b>	<b>30,842</b>	<b>5,400</b>	<b>675</b>	<b>146,943</b>	

## Throughput Australian avocados by destination State Throughput 1st January 2008 to date = 2,681,136 5.5kg tray eqv



## Dispatch vs weekly forecast for Australian Avocados - all varieties and all packs (16th February 2008 to 25th July 2008)



## Major Capital City Weather Report – week ahead

City	Tue	Wed	Thu	Fri	Public Hols	School Holidays
<b>Brisbane</b>	25°	23°	22°	21°	13th Aug - Royal Show	28th Jun - 13th Jul
<b>Melbourne</b>	14°	15°	15°	15°	4th Nov - Melb. Cup Day	28th Jun - 13th Jul
<b>Perth</b>	18°	19°	21°	19°	29th Sept - Queen's B/day	5th Jul - 20th Jul
<b>Sydney</b>	19°	18°	18°	16°	4th Aug - Bank Holiday	5th Jul - 20th Jul

### Forecast Data (Week 26-30)

Variety	Trays - Total	Bulk	P/Pk	Oil	All - Total
	5.5Kg Eqv	10Kg	Kg	Kg	5.5Kg Eqv
Week 26 - begin 21/06/08					
Bacon		192			<b>349</b>
Fuerte	200	50			<b>291</b>
Hass	106,439	5,067	20,400	5,400	<b>120,343</b>
Lamb Hass	300				<b>300</b>
Sharwil	3,070	460	1,000		<b>4,088</b>
Wurtz	5,150	10			<b>5,168</b>
<b>Week Total</b>	<b>115,159</b>	<b>5,779</b>	<b>21,400</b>	<b>5,400</b>	<b>130,539</b>
Week 27 - begin 28/06/08					
Bacon		128			<b>233</b>
Fuerte	80	82			<b>229</b>
Hass	104,496	12,210	20,400	5,400	<b>131,387</b>
Lamb Hass	200				<b>200</b>
Sharwil	2,620	220	1,000		<b>3,202</b>
Wurtz	300				<b>300</b>
<b>Week Total</b>	<b>107,696</b>	<b>12,640</b>	<b>21,400</b>	<b>5,400</b>	<b>135,551</b>
Week 28 - begin 5/07/08					
Bacon		120			<b>218</b>
Fuerte	80	90			<b>244</b>
Hass	99,719	11,230	15,400	5,400	<b>123,919</b>
Lamb Hass	100				<b>100</b>
Sharwil	1,870	70	1,000		<b>2,179</b>
Wurtz	600	50			<b>691</b>
<b>Week Total</b>	<b>102,369</b>	<b>11,560</b>	<b>16,400</b>	<b>5,400</b>	<b>127,351</b>
Week 29 - begin 12/07/08					
Bacon		160			<b>291</b>
Fuerte	80	170			<b>389</b>
Hass	96,425	11,460	15,500	5,400	<b>121,061</b>
Lamb Hass	100				<b>100</b>
Sharwil	1,200	10	1,000		<b>1,400</b>
<b>Week Total</b>	<b>97,805</b>	<b>11,800</b>	<b>16,500</b>	<b>5,400</b>	<b>123,242</b>
Week 30 - begin 19/07/08					
Fuerte	80	210			<b>462</b>
Hass	95,093	11,120	20,500	5,400	<b>120,020</b>
Sharwil	1,200	10			<b>1,218</b>
Wurtz	950				<b>950</b>
<b>Week Total</b>	<b>97,323</b>	<b>11,340</b>	<b>20,500</b>	<b>5,400</b>	<b>122,650</b>

### Dispatch Data (Week 26 - begin 21/06/08)

Variety	Trays	Bulk	P/Pk	Oil	Other	5.5Kg Eqv
	5.5kg eqv	10Kg	Kg	Kg	Kg	Total Trays
Bacon		188				<b>342</b>
Fuerte	208	44				<b>288</b>
Hass	107,024	14,978	30,842	5,400	400	<b>140,920</b>
Lamb Hass	142	33				<b>202</b>
Pinkerton		48				<b>87</b>
Reed	280	36				<b>345</b>
Sharwil	3,116	291			165	<b>3,675</b>
Shepard	39	13				<b>63</b>
Wurtz	877	69			110	<b>1,022</b>
<b>Total</b>	<b>111,686</b>	<b>15,700</b>	<b>30,842</b>	<b>5,400</b>	<b>675</b>	<b>146,944</b>

### Week 26 contributors

Balmoral Orchard  
 BT & RG Pegg  
 Donovan Avocados  
 G & J Krenske  
 Green Nugget Orchards  
 Lavers Orchards  
 Mountain Fresh  
 Mt Binga Orchards Pty Ltd  
 Natures Fruit Company  
 One Harvest  
 RM & KL Cornwall  
 Simpsons Farms Pty Ltd  
 Summerland House With No Steps  
 Sunfresh  
 Sunny Bluff Produce Pty Ltd  
 Sunnyspot Packhouse PL  
 Touchwood Farming

### Percentage dispatched by region (Based on seasonal forecast - 2008)

