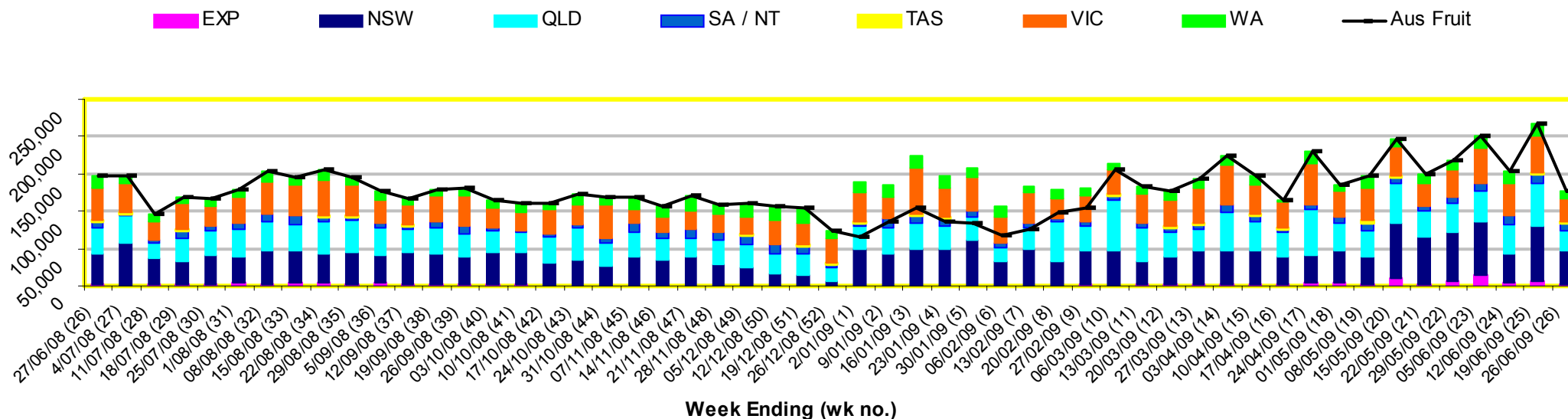


INFOCADO WEEKLY REPORT: 20th June - 26th June 2009 (Wk 26)

Industry Dispatches 20th June - 26th June 2009 (Wk 26)

Dest. State	5.5kg	5.5kg	5.5kg	5.5kg	5.5kg	5.5kg	5.5kg	5.5kg	5.5kg	5.5kg	Bulk	P/PK	Oil	Proc	Other	5.5Kg Eqv Trays All
	<16	16	18	20	22	23	25	28	28+	Total	10Kg	Kg	Kg	Kg	Kg	Total
EXP								1,449	841	2,290	65					2,408
NSW	158	847	3,851	6,091	2,096	10,222	7,462	1,723	568	33,018	6,926	478				45,698
QLD	28	505	756	4,125	382	3,694	5,085	2,120	212	16,907	2,407	12,722	2,847	4,050	452	24,932
SA / NT		10	69	4	19	197	5,285	2,096		7,680	2,117	432				11,608
TAS						297	801			1,098						1,098
VIC	169	628	4,008	8,552	947	5,466	2,153	1,480	104	23,507	4,468	72				31,644
WA		164	358	546		1,331	1,173	152		3,724	2,896					8,989
Total	355	2,154	9,042	19,318	3,444	21,207	21,959	9,020	1,725	88,224	18,879	13,704	2,847	4,050	452	126,377

Throughput Australian & NZ avocados by destination State Throughput 1st January 2009 to date = 3,950,434 5.5kg tray eqv



Comments from the CEO

- Over the last couple of weeks some of the Coles specials have been on add intermittently in Melbourne and Brisbane but for prepacks—these were not reported on the graph on page 5 because it reports on loose fruit.
- As of next week ACT, NT, Qld, SA and Victoria are all on school holidays. NSW start holidays on 11th July.
- Some dispatches were down last week due to rain in South Queensland however this does not account for the huge discrepancy between dispatch and forecast last week. The forecast form has now been adapted to show you the comparison between your forecast last week and your actual dispatches. Please use this to assist in your forthcoming forecasts. We are also looking in to other ways to help improve forecasting.
- Stock on hand is starting to rise in the markets.



Forecast Data (Week 26 - 30)

Variety	Trays - Total	Bulk	P/Pk	Proc	Other	All - Total
	5.5Kg	10Kg	Kg	Kg	Kg	5.5Kg Eqv

Week 26 - begin 20/06/09						
Bacon		120				218
Hass	149,198	11,850	16,500	6,000	360	174,899
Pinkerton	150				90	166
Sharwil	1,290	75	3,000			1,971
Wurtz	1,700	200				2,064
Week Total	152,338	12,245	19,500	6,000	450	179,320

Week 27 - begin 27/06/09						
Bacon		112				204
Hass	141,094	11,040	17,500	6,000	360	165,505
Pinkerton	500				90	516
Sharwil	1,900	50	3,000			2,536
Wurtz	800	30				855
Week Total	144,294	11,232	20,500	6,000	450	169,616

Week 28 - begin 4/07/09						
Fuerte		160				291
Hass	139,750	11,520	17,500	6,000	180	165,001
Pinkerton	80					80
Sharwil	1,600	30	3,000			2,200
Wurtz	700	20				736
Week Total	142,130	11,730	20,500	6,000	180	168,308

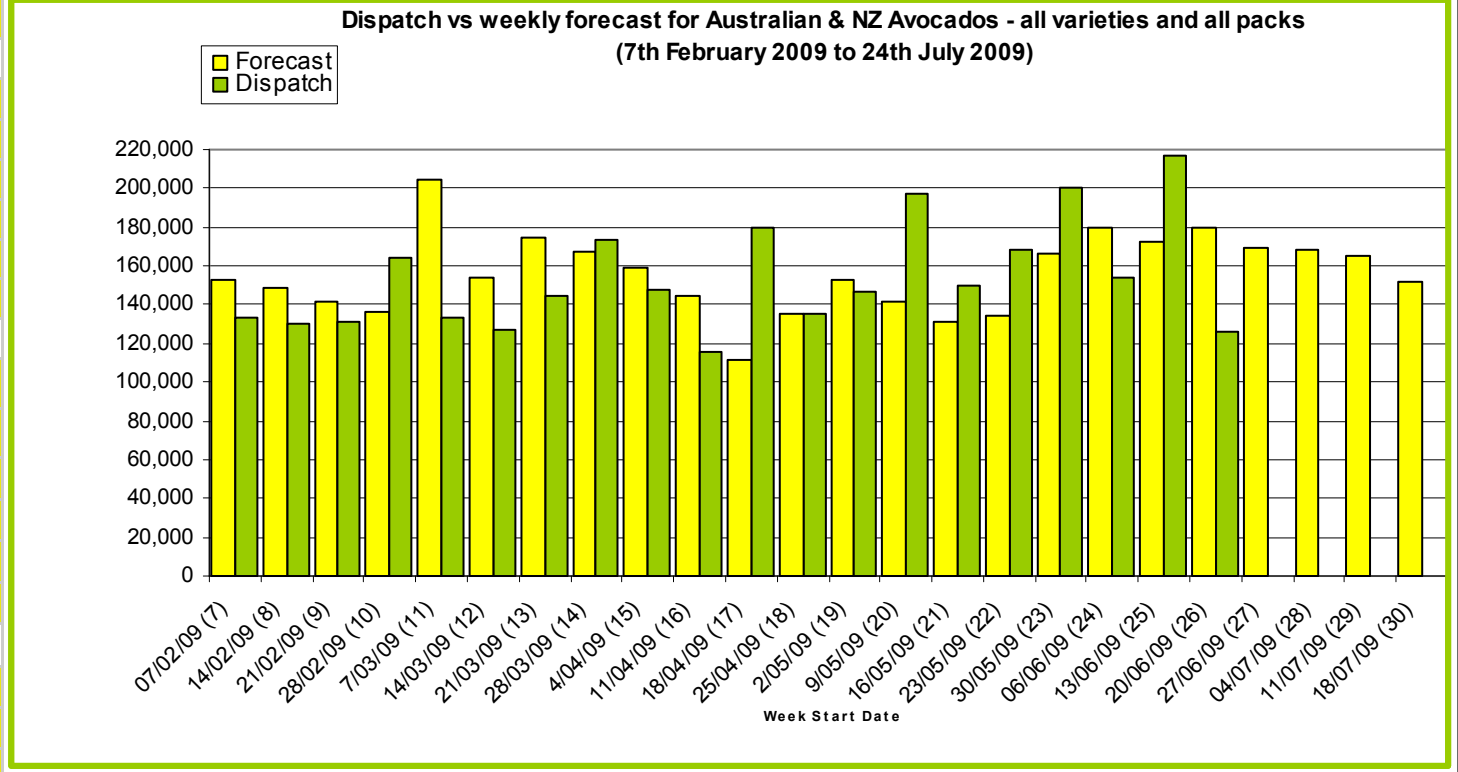
Week 29 - begin 11/07/09						
Fuerte		160				291
Hass	139,039	11,020	17,500	6,000	180	163,381
Pinkerton	70					70
Sharwil	450	20	3,000			1,031
Wurtz	600	10				618
Week Total	140,159	11,210	20,500	6,000	180	165,392

Week 30 - begin 18/07/09						
Fuerte		40				73
Hass	132,074	9,770	1,000	6,000	360	151,176
Sharwil	400	20				436
Wurtz	500					500
Week Total	132,974	9,830	1,000	6,000	360	152,185

Green shading indicates dispatch data Yellow shading indicates forecast data

Dispatch Data (Week 26 - begin 20/06/09)

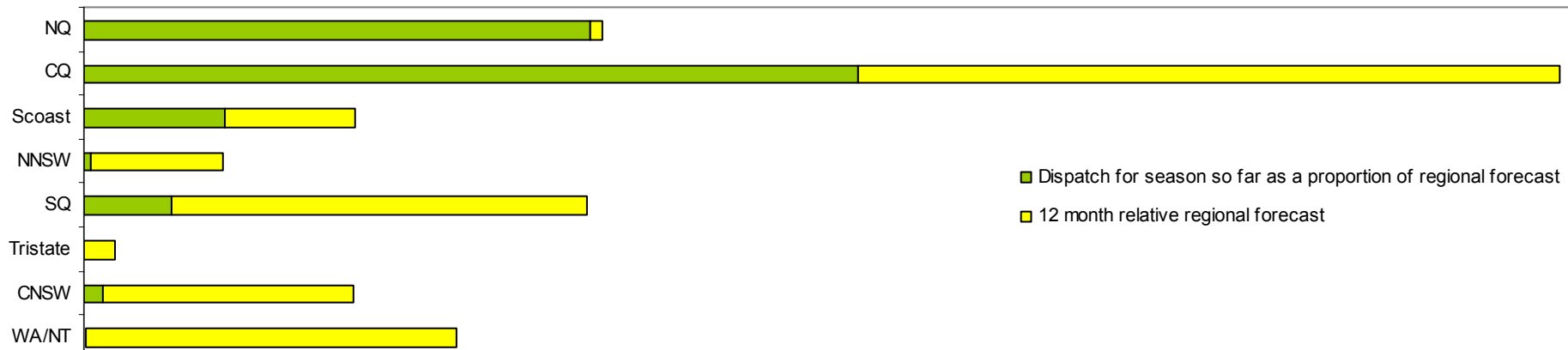
Variety	Trays	Bulk	P/Pk	Oil	Proc	Other	5.5Kg Eqv
	5.5kg eqv	10Kg	Kg	Kg	Kg	Kg	Total Trays
Bacon		112					204
Hass	84,661	18,342	13,704	2,847	4,050	452	121,838
Pinkerton	159						159
Sharwil	1,426	271					1,919
Wurtz	1,976	154					2,256
Total	88,222	18,879	13,704	2,847	4,050	452	126,375



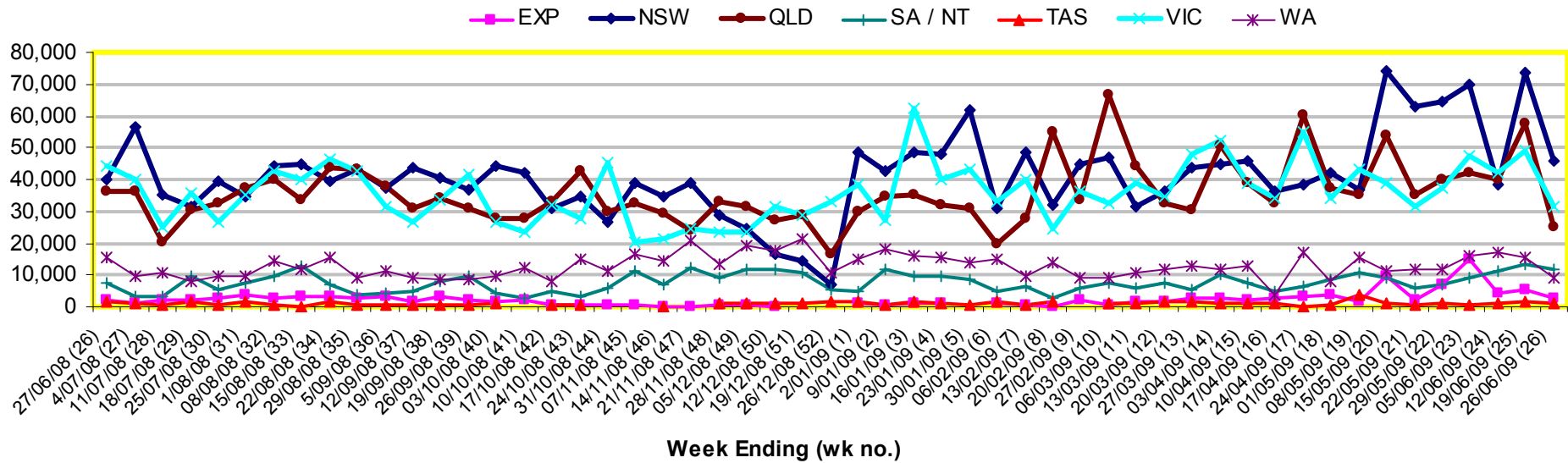
New Zealand Avocado Exports—Forecast v Import Statistics (5.5kg eqv trays) August 2008-April 2009

Export Dest'n	Aug	Sep	Oct	Nov	Dec	Jan	Feb	Mar	Apr	Total to date
NZ Export Forecast		26,730	177,487	319,958	378,497	304,722	122,824	6,282		1,336,500
Australia		7,713	210,274	312,989	345,200	235,527	150,635			1,262,338
USA										
Japan		3,920	21,563	37,519	27,534	9,600				100,135
Total		11,633	231,837	350,508	372,734	245,127	150,635			1,362,657

Percentage dispatched by region 2009 Season (Based on seasonal forecast - 2009)



Throughput Australian & NZ avocados by destination State
Throughput 1st January 2009 to date = 3,950,434 5.5kg tray eqv



Week 26 contributors - Packhouses

- | | |
|---------------------------------|--------------------------------|
| Balmoral Orchard | Natures Fruit Company |
| Donovan Family Investment Trust | Simpson Farms Pty Ltd |
| G & J Krenske | Summerland House With No Steps |
| Googa Farms | Sunfresh |
| J & K Hummer | Sunny Bluff Produce |
| Mount Hallen Avocados | Sunnyspot Packhouse |
| Mountain Fresh | SuperPak Group |
| Mt Binga Orchards Pty Ltd | Touchwood Farming |

Week 26 contributors - Wholesalers

- | | |
|-----------------------------------|---------------------------------|
| Barkers (Melbourne) | Romeos Marketing (Brisbane) |
| Costa Exchange Trading (Adelaide) | Sculli & Co Pty Ltd (Melbourne) |
| Dykes Bros (Melbourne) | The La Manna Group (Adelaide) |
| Etherington (Perth) | The La Manna Group (Brisbane) |
| Mercer Mooney (Perth) | The La Manna Group (Melbourne) |
| Murray Bros (Brisbane) | United Fresh (Adelaide) |

Sales Report including Direct Sales from Packhouses, Wholesale Sales and Stock on Hand at Wholesale Level

	Trays 5.5kg eqv (incl. Mod6 & P84)				Bulk 10kg Cartons					Pre-Pack Kg					Total (5.5kg eqv)			
	Hass	Shepard	Other	Total	Hass	Shepard	Other	Total	5.5kg eqv	Hass	Shepard	Other	Total	5.5kg eqv	Hass	Shepard	Other	Total
NSW																		
Total supermarket sales																		
Total non supermarket sales	# Data set not included because not enough NSW wholesalers contributed data this week																	
Total exports																		
Total sales																		
Total stock on hand																		
QLD																		
Total supermarket sales	9,346		4	9,350						822			822	149	9,496		4	9,500
Total non supermarket sales	13,588		308	13,896	436	46	38	520	945						14,381	84	377	14,842
Total exports	2,290			2,290	65			65	118						2,408			2,408
Total sales	25,224		312	25,536	501	46	38	585	1,064	822			822	149	26,285	84	381	26,750
Total stock on hand	27,337		246	27,583	158		55	213	387						27,624		346	27,970
SA & TAS																		
Total supermarket sales	10,208			10,208	1,056			1,056	1,920	444			444	81	12,208			12,208
Total non supermarket sales	3,207		31	3,238	951			951	1,729						4,936		31	4,967
Total exports																		
Total sales	13,415		31	13,446	2,007			2,007	3,649	444			444	81	17,145		31	17,176
Total stock on hand #	9,461	96	293	9,850	1,913	58	100	2,071	3,765	87			87	16	12,955	201	475	13,631
VIC																		
Total supermarket sales	12,716			12,716	1,440			1,440	2,618	72			72	13	15,347			15,347
Total non supermarket sales	5,221		2,880	8,101	1,314			1,314	2,389						7,611		2,880	10,490
Total exports																		
Total sales	17,937		2,880	20,817	2,754			2,754	5,007	72			72	13	22,958		2,880	25,837
Total stock on hand	17,259		3,383	20,642	1,883	641	1,773	4,297	7,813						20,683	1,165	6,606	28,455
WA																		
Total supermarket sales																		
Total non supermarket sales	# Full data set not included because not enough WA wholesalers contributed data this week																	
Total exports																		
Total sales	4,947			4,947	2,713			2,713	4,933						9,880			9,880
Total stock on hand #																		
TOTAL																		
Total supermarket sales	48,984		4	48,988	4,172			4,172	7,585	1,482			1,482	269	56,839		4	56,843
Total non supermarket sales	25,376		3,219	28,595	4,262	46	38	4,346	7,902						33,126	84	3,288	36,497
Total exports	2,290			2,290	65			65	118						2,408			2,408
Total sales	76,651		3,223	79,874	8,499	46	38	8,583	15,605	1,482			1,482	269	92,373	84	3,292	95,749
Total stock on hand	61,933	96	3,922	65,951	7,963	699	1,928	10,590	19,255	87			87	16	76,427	1,367	7,427	85,221

Weekly National Sales

