



INFOCADO WEEKLY REPORT

28th June - 4th July 2008 (Wk 27)

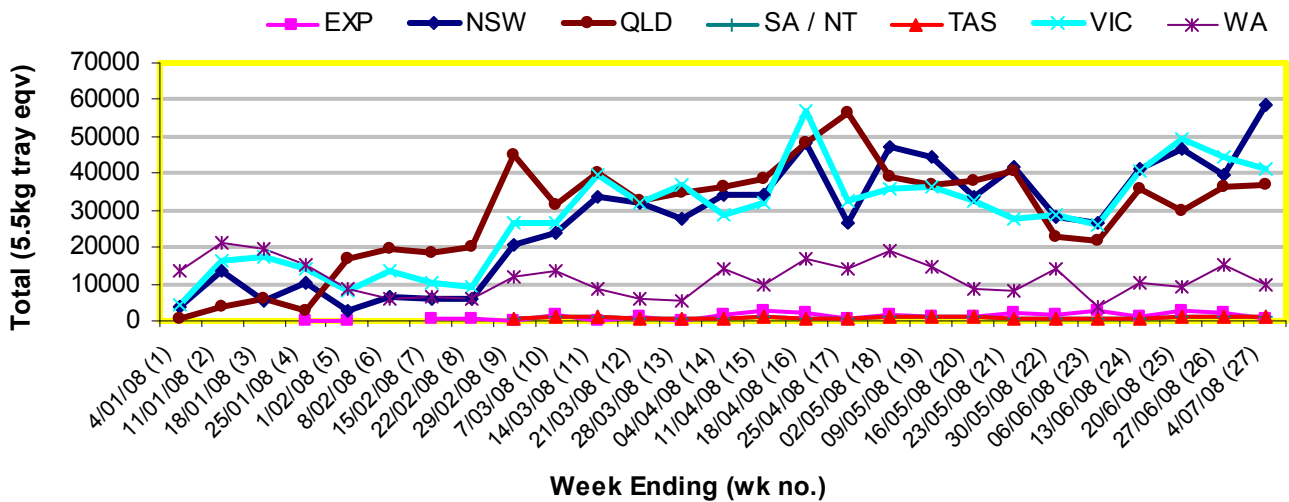
Green shading indicates dispatch data

Yellow shading indicates forecast data

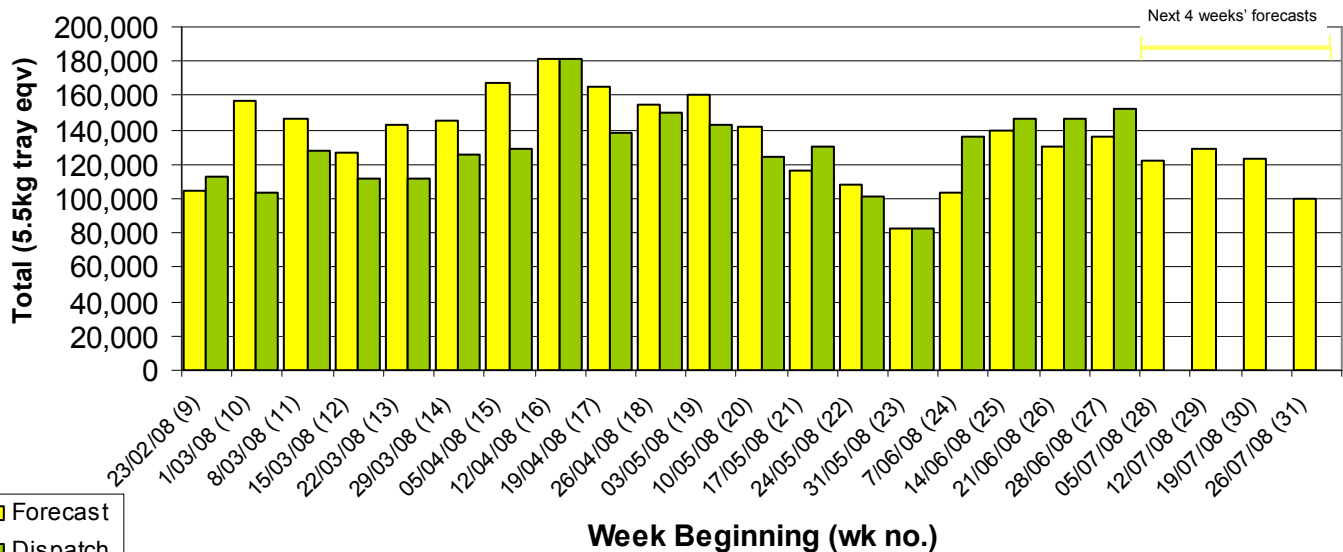
Industry Dispatches 28th June - 4th July 2008 (Wk 27)

Dest. State	5.5kg	5.5kg	5.5kg	5.5kg	5.5kg	5.5kg	5.5kg	5.5kg	5.5kg	5.5kg	Bulk	P/PK	Oil	Other	5.5Kg Eqv Trays All
	<16	16	18	20	22	23	25	28	28+	Total	10Kg	Kg	Kg	Kg	Total
EXP									578	578	123				802
NSW	224	1,399	17,816	9,236	1,590	6,585	3,267	1,607	402	42,126	5,956	31,890		600	58,862
QLD	44	233	2,178	3,369	92	12,378	6,620	1,994	873	27,781	3,042	8,102	10,557	231	36,747
SA / NT	1	43	94	119	93	822	1,327	301		2,800	289				3,325
TAS									1,039	1,039					1,039
VIC	93	3,436	12,548	5,370	969	3,929	2,264	778	59	29,446	4,618	18,336			41,176
WA	1	16	108	4,172	180	931	732	377		6,517	1,096	8,400			10,037
Total	363	5,127	32,744	22,266	2,924	24,645	15,249	5,057	1,912	110,287	15,124	66,728	5,400	831	151,988

Throughput Australian avocados by destination State Throughput 1st January 2008 to date = 2,833,123 5.5kg tray eqv



Dispatch vs weekly forecast for Australian Avocados - all varieties and all packs (23rd February 2008 to 1st August 2008)



Major Capital City Weather Report – week ahead

City	Tue	Wed	Thu	Fri	Public Hols	School Holidays
Brisbane	21°	18°	20°	21°	13th Aug - Royal Show	28th Jun - 13th Jul
Melbourne	13°	14°	13°	13°	4th Nov - Melb. Cup Day	28th Jun - 13th Jul
Perth	21°	19°	19°	17°	29th Sept - Queen's B/day	5th Jul - 20th Jul
Sydney	16°	14°	16°	16°	4th Aug - Bank Holiday	5th Jul - 20th Jul

Forecast Data (Week 27-31)

Variety	Trays - Total	Bulk	P/Pk	Oil	All - Total
	5.5Kg Eqv	10Kg	Kg	Kg	5.5Kg Eqv
Week 27 - begin 28/06/08					
Bacon		128			233
Fuerte	80	82			229
Hass	104,496	12,210	20,400	5,400	131,387
Lamb Hass	200				200
Sharwil	2,620	220	1,000		3,202
Wurtz	300				300
Week Total	107,696	12,640	21,400	5,400	135,551
Week 28 - begin 5/07/08					
Bacon		120			218
Fuerte	380	190			725
Hass	94,487	10,880	15,400	5,400	118,051
Lamb Hass	100				100
Sharwil	1,900	40	1,000		2,155
Wurtz	600	50			691
Week Total	97,467	11,280	16,400	5,400	121,940
Week 29 - begin 12/07/08					
Bacon		200			364
Fuerte	80	90			244
Hass	100,529	12,160	15,500	5,400	126,438
Lamb Hass	100				100
Sharwil	1,300	40	1,000		1,555
Wurtz	500	100			682
Week Total	102,509	12,590	16,500	5,400	129,382
Week 30 - begin 19/07/08					
Bacon		40			73
Fuerte	80	210			462
Hass	96,711	11,120	15,500	5,400	120,729
Lamb Hass	100	50			191
Sharwil	1,300	10	1,000		1,500
Wurtz	800				800
Week Total	98,991	11,430	16,500	5,400	123,755
Week 31 - begin 26/07/08					
Fuerte	80	170			389
Hass	78,802	9,250	15,000		98,347
Lamb Hass	100	50			191
Sharwil	1,120		1,000		1,302
Week Total	80,102	9,470	16,000	0	100,229

Dispatch Data (Week 27 - begin 28/06/08)

Variety	Trays	Bulk	P/Pk	Oil	Other	5.5Kg Eqv
	5.5kg eqv	10Kg	Kg	Kg	Kg	Total Trays
Fuerte	387	227				800
Hass	107,787	14,506	66,728	10,557	831	148,365
Sharwil	1,321	273				1,817
Shepard	117					117
Wurtz	675	118				890
Total	110,287	15,124	66,728	5,400	831	151,988

Week 27 contributors

Balmoral Orchard
 BT & RG Pegg
 Donovan Avocados
 G & C Christensen
 G & J Krenske
 Green Nugget Orchards
 J & K Hummer
 Jirel Holdings
 Lavers Orchards
 Mount Hallen Avocados
 Mountain Fresh
 Mt Binga Orchards Pty Ltd
 Natures Fruit Company
 One Harvest
 Simpsons Farms Pty Ltd
 Summerland House With No Steps
 Sunfresh
 Sunny Bluff Produce Pty Ltd
 Sunnyspot Packhouse PL
 Touchwood Farming
 Tropicado Avocados

Percentage dispatched by region (Based on seasonal forecast - 2008)

