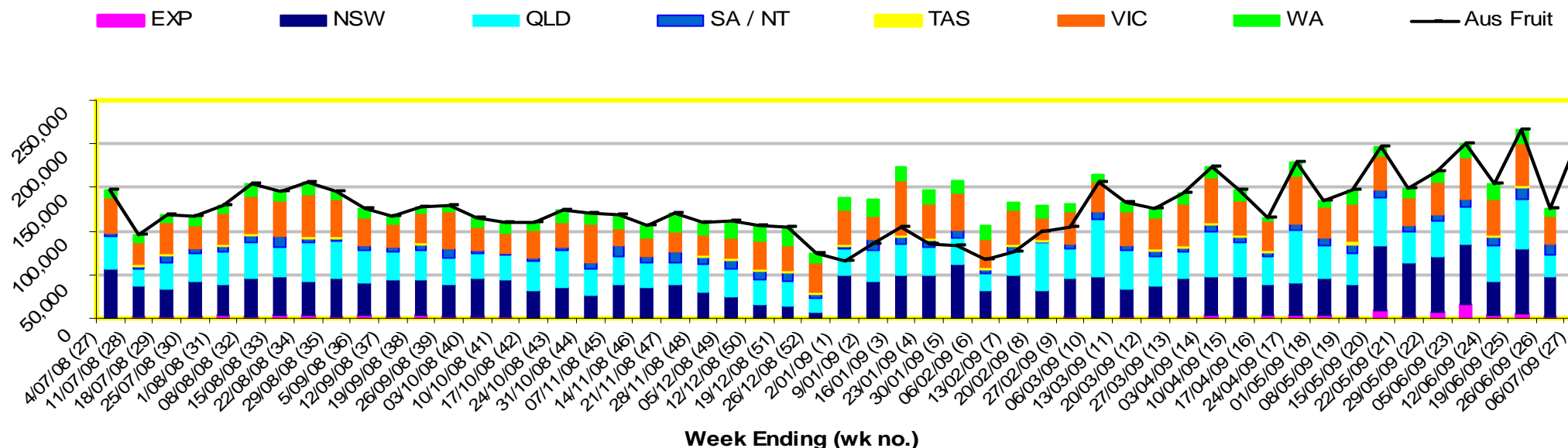


INFOCADO WEEKLY REPORT: 27th June - 3rd July 2009 (Wk 27)

Industry Dispatches 27th June - 3rd July 2009 (Wk 27)

| Dest. State | 5.5kg | | | | | | | | | | Bulk | P/PK | Proc | 5.5Kg Eqv Trays All | |
|--------------|------------|--------------|---------------|---------------|--------------|---------------|---------------|---------------|--------------|-------|----------------|---------------|---------------|---------------------|----------------|
| | <16 | 16 | 18 | 20 | 22 | 23 | 25 | 28 | 28+ | Total | | | | | |
| EXP | | | | | | | | 304 | 663 | | 967 | 260 | | | 1,440 |
| NSW | 166 | 1,092 | 6,575 | 9,843 | 2,017 | 18,818 | 8,491 | 6,404 | 803 | | 54,209 | 14,398 | 18,782 | | 83,802 |
| QLD | | 915 | 1,059 | 5,090 | 289 | 8,013 | 13,244 | 5,418 | 452 | | 34,480 | 7,916 | 15,987 | 6,000 | 52,871 |
| SA / NT | 2 | 34 | 135 | 178 | 75 | 170 | 3,517 | 1,301 | | | 5,412 | 631 | 576 | | 6,664 |
| TAS | | | | | | | 1,068 | | | | 1,068 | | 114 | | 1,089 |
| VIC | 59 | 2,037 | 8,660 | 9,137 | 2,058 | 4,296 | 4,645 | 4,168 | 912 | | 35,972 | 7,055 | 8,748 | | 50,390 |
| WA | | 14 | 29 | 245 | 226 | 2,729 | 1,521 | 575 | | | 5,339 | 3,088 | | | 10,954 |
| Total | 227 | 4,092 | 16,458 | 24,493 | 4,665 | 34,026 | 32,486 | 18,170 | 2,830 | | 137,447 | 33,348 | 44,207 | 6,000 | 207,210 |

Throughput Australian & NZ avocados by destination State Throughput 1st January 2009 to date = 4,157,642 5.5kg tray eqv



Comments from the CEO

- Last week, sales to supermarkets were the highest they've been all year. Not surprisingly avocados are on catalogue special this week in Brisbane and Sydney for Woolworths and in Perth for Coles.
- Closing stocks in the market seem to be remaining steady.
- Although over the past 4 weeks there have been large discrepancies between forecasts and dispatches both have averaged out to about 175,000 trays per week.

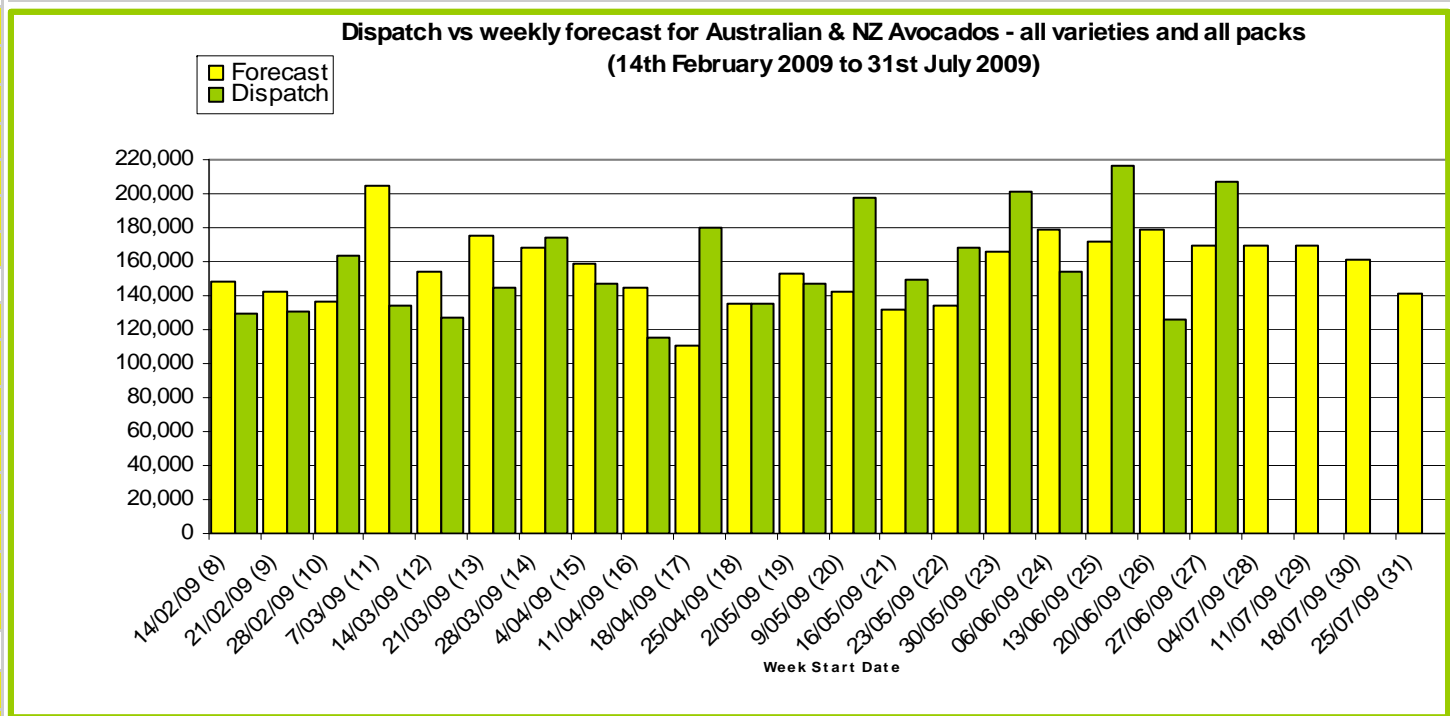


Forecast Data (Week 27 - 31)

| Variety | Trays - 5.5Kg | Bulk 10Kg | P/Pk Kg | Proc Kg | Other Kg | All - Total 5.5Kg Eqv |
|--------------------------|------------------|---------------|---------------|--------------|-------------|--------------------------|
| Week 27 - begin 27/06/09 | | | | | | |
| Bacon | | 112 | | | | 204 |
| Hass | 141,094 | 11,040 | 17,500 | 6,000 | 360 | 165,505 |
| Pinkerton | 500 | | | | 90 | 516 |
| Sharwil | 1,900 | 50 | 3,000 | | | 2,536 |
| Wurtz | 800 | 30 | | | | 855 |
| Week Total | 144,294 | 11,232 | 20,500 | 6,000 | 450 | 169,616 |
| Week 28 - begin 4/07/09 | | | | | | |
| Bacon | | 40 | | | | 73 |
| Fuerte | | 120 | | | | 218 |
| Hass | 138,162 | 12,120 | 26,400 | 6,000 | 180 | 166,122 |
| Pinkerton | 80 | | | | | 80 |
| Sharwil | 1,450 | 30 | 3,000 | | | 2,050 |
| Wurtz | 600 | 20 | | | | 636 |
| Week Total | 140,292 | 12,330 | 29,400 | 6,000 | 180 | 169,179 |
| Week 29 - begin 11/07/09 | | | | | | |
| Bacon | | 20 | | | | 36 |
| Fuerte | | 140 | | | | 255 |
| Hass | 139,825 | 12,170 | 23,400 | 6,000 | 180 | 167,331 |
| Pinkerton | 70 | | | | | 70 |
| Reed | | 10 | | | | 18 |
| Sharwil | 600 | 20 | 3,000 | | | 1,181 |
| Wurtz | 700 | 10 | | | | 718 |
| Week Total | 141,195 | 12,370 | 26,400 | 6,000 | 180 | 169,610 |
| Week 30 - begin 18/07/09 | | | | | | |
| Fuerte | | 40 | | | | 73 |
| Hass | 135,289 | 11,000 | 23,400 | 6,000 | 360 | 160,700 |
| Sharwil | 400 | 20 | | | | 436 |
| Wurtz | 500 | | | | | 500 |
| Week Total | 136,189 | 11,060 | 23,400 | 6,000 | 360 | 161,709 |
| Week 31 - begin 25/07/09 | | | | | | |
| Fuerte | | 120 | | | | 218 |
| Hass | 119,389 | 9,760 | 18,400 | | 200 | 140,515 |
| Sharwil | 400 | 50 | | | | 491 |
| Wurtz | 500 | 20 | | | | 536 |
| Week Total | 120,289 | 9,950 | 18,400 | | 200 | 141,761 |

Green shading indicates dispatch data Yellow shading indicates forecast data

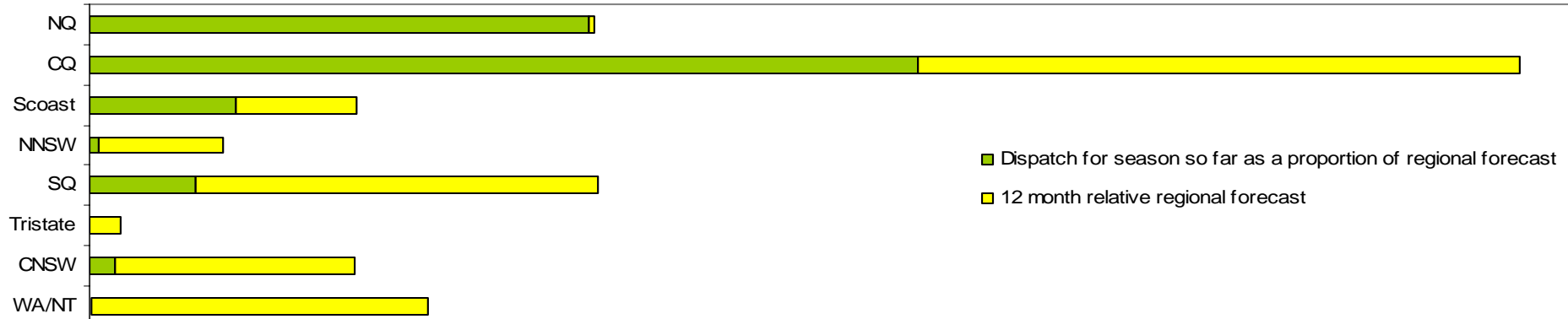
| Dispatch Data (Week 27 - begin 27/06/09) | | | | | |
|--|----------------|---------------|---------------|--------------|----------------|
| Variety | Trays | Bulk | P/Pk | Proc | 5.5Kg Eqv |
| | 5.5kg eqv | 10Kg | Kg | Kg | Total Trays |
| Bacon | | 112 | | | 204 |
| Fuerte | | 40 | | | 73 |
| Hass | 135,134 | 32,507 | 44,207 | 6,000 | 203,367 |
| Reed | | 63 | | | 115 |
| Sharwil | 1,469 | 257 | | | 1,936 |
| Wurtz | 845 | 369 | | | 1,516 |
| Total | 137,448 | 33,348 | 44,207 | 6,000 | 207,210 |



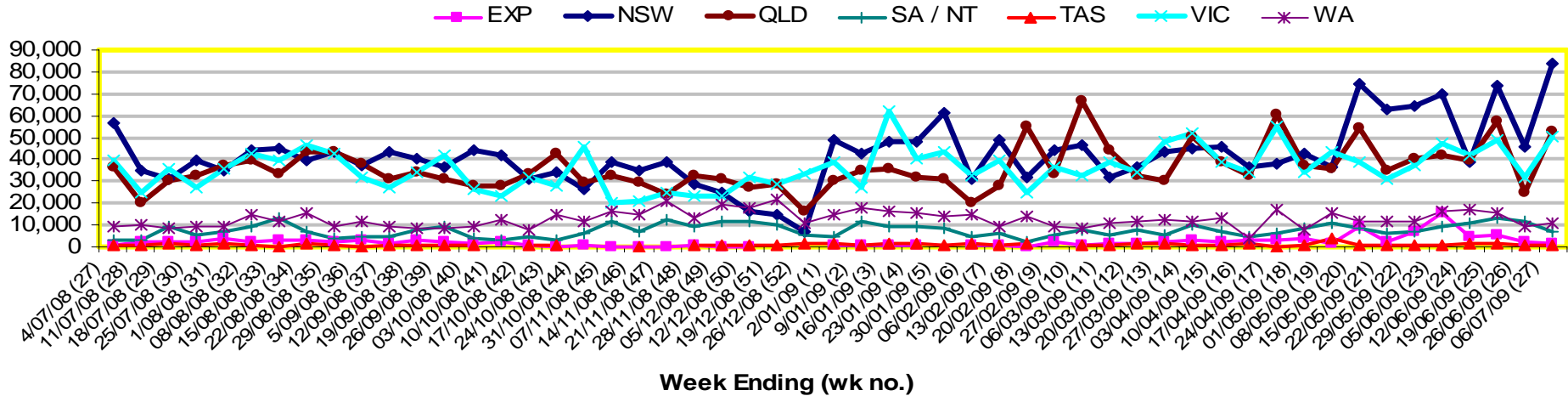
New Zealand Avocado Exports—Forecast v Import Statistics (5.5kg eqv trays) August 2008-April 2009

| Export Dest'n | Aug | Sep | Oct | Nov | Dec | Jan | Feb | Mar | Apr | Total to date |
|---------------------------|-----|--------|---------|---------|---------|---------|---------|-------|-----|---------------|
| NZ Export Forecast | | 26,730 | 177,487 | 319,958 | 378,497 | 304,722 | 122,824 | 6,282 | | 1,336,500 |
| Australia | | 7,713 | 210,274 | 312,989 | 345,200 | 235,527 | 150,635 | | | 1,262,338 |
| USA | | | | | | | | | | |
| Japan | | 3,920 | 21,563 | 37,519 | 27,534 | 9,600 | | | | 100,135 |
| Total | | 11,633 | 231,837 | 350,508 | 372,734 | 245,127 | 150,635 | | | 1,362,657 |

Percentage dispatched by region 2009 Season (Based on seasonal forecast - 2009)



Throughput Australian & NZ avocados by destination State
Throughput 1st January 2009 to date = 4.157.642 5.5kq trav eqv



Week 27 contributors - Packhouses

| | |
|---------------------------------|-----------------------------|
| Balmoral Orchard | One Harvest |
| Donovan Family Investment Trust | Simpson Farms Pty Ltd |
| G & J Krenske | Sunfresh |
| Googa Farms | Sunny Bluff Produce Pty Ltd |
| J & K Hummer | Sunnyspot Packhouse PL |
| Mount Hallen Avocados | SuperPak Group Pty Ltd |
| Mountain Fresh | The I & R Family Trust |
| Natures Fruit Company | Touchwood Farming |

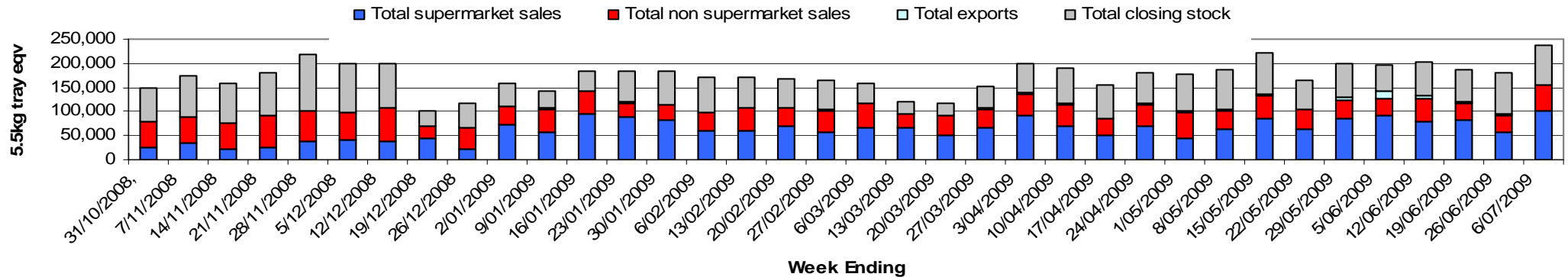
Week 27 contributors - Wholesalers

| | |
|-----------------------------------|---------------------------------|
| Costa Exchange Trading (Adelaide) | Romeos Marketing (Brisbane) |
| Costa Exchange Trading (Brisbane) | Sculli & Co Pty Ltd (Melbourne) |
| Dykes Bros (Melbourne) | The La Manna Group (Adelaide) |
| Etherington (Perth) | The La Manna Group (Brisbane) |
| Kelly's (Melbourne) | The La Manna Group (Melbourne) |
| Mercer Mooney (Perth) | United Fresh (Adelaide) |
| Murray Bros (Brisbane) | |

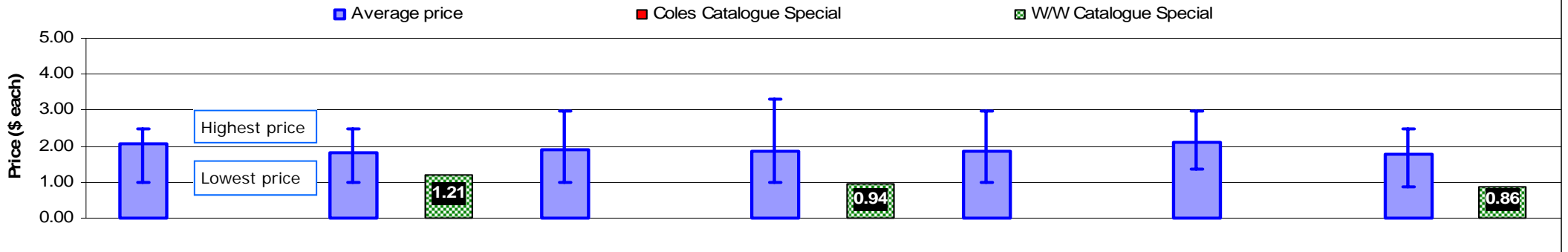
Sales Report including Direct Sales from Packhouses, Wholesale Sales and Stock on Hand at Wholesale Level

| | Trays 5.5kg eqv (incl. Mod6 & P84) | | | | Bulk 10kg Cartons | | | | Pre-Pack Kg | | | | | Total (5.5kg eqv) | | | | | |
|-----------------------------|------------------------------------|---------|-------|---------|-------------------|---------|-------|--------|-------------|--------|---------|-------|-------|-------------------|--------|---------|-------|--------|---------|
| | Hass | Shepard | Other | Total | Hass | Shepard | Other | Total | 5.5kg eqv | Hass | Shepard | Other | Total | 5.5kg eqv | Hass | Shepard | Other | Total | |
| NSW | | | | | | | | | | | | | | | | | | | |
| Total supermarket sales | | | | | | | | | | | | | | | | | | | |
| Total non supermarket sales | | | | | | | | | | | | | | | | | | | |
| Total exports | | | | | | | | | | | | | | | | | | | |
| Total sales | | | | | | | | | | | | | | | | | | | |
| Total stock on hand | | | | | | | | | | | | | | | | | | | |
| QLD | | | | | | | | | | | | | | | | | | | |
| Total supermarket sales | 28,748 | | | 28,748 | 1,702 | | | 1,702 | 3,095 | 41,422 | | | | 41,422 | 7,531 | 39,374 | | 39,374 | |
| Total non supermarket sales | 16,515 | | 335 | 16,850 | 1,944 | | 97 | 2,041 | 3,711 | | | | | | 20,050 | | 511 | 20,561 | |
| Total exports | 967 | | | 967 | 260 | | | 260 | 473 | | | | | | 1,440 | | | 1,440 | |
| Total sales | 46,230 | | 335 | 46,565 | 3,906 | | 97 | 4,003 | 7,278 | 41,422 | | | | 41,422 | 7,531 | 60,863 | | 511 | 61,375 |
| Total stock on hand | 38,557 | | 942 | 39,500 | 1,099 | | 77 | 1,176 | 2,138 | 167 | | | | 167 | 30 | 40,586 | | 1,082 | 41,668 |
| SA & TAS | | | | | | | | | | | | | | | | | | | |
| Total supermarket sales | 9,573 | | 139 | 9,712 | 384 | | 15 | 399 | 725 | 784 | | | | 784 | 143 | 10,413 | | 166 | 10,580 |
| Total non supermarket sales | 3,681 | | 94 | 3,775 | 727 | | | 727 | 1,322 | | | | | | 5,003 | | 94 | 5,097 | |
| Total exports | | | | | | | | | | | | | | | | | | | |
| Total sales | 13,254 | | 233 | 13,487 | 1,111 | | 15 | 1,126 | 2,047 | 784 | | | | 784 | 143 | 15,416 | | 260 | 15,676 |
| Total stock on hand # | 3,431 | | 335 | 3,766 | 1,310 | | 96 | 1,406 | 2,556 | 209 | | | | 209 | 38 | 5,851 | | 510 | 6,361 |
| VIC | | | | | | | | | | | | | | | | | | | |
| Total supermarket sales | 13,762 | | 22 | 13,784 | 239 | | 7 | 246 | 447 | 8,748 | | | | 8,748 | 1,591 | 15,787 | | 35 | 15,822 |
| Total non supermarket sales | 6,829 | | 3,622 | 10,451 | 579 | 641 | 658 | 1,878 | 3,415 | | | | | | 7,882 | 1,165 | 4,819 | 13,866 | |
| Total exports | | | | | | | | | | | | | | | | | | | |
| Total sales | 20,591 | | 3,644 | 24,236 | 818 | 641 | 665 | 2,124 | 3,862 | 8,748 | | | | 8,748 | 1,591 | 23,669 | 1,165 | 4,853 | 29,688 |
| Total stock on hand | 9,253 | | 4,749 | 14,002 | 3,105 | 1,250 | 4,355 | 7,918 | | | | | | | | 14,899 | | 7,022 | 21,921 |
| WA | | | | | | | | | | | | | | | | | | | |
| Total supermarket sales | | | | | | | | | | | | | | | | | | | |
| Total non supermarket sales | | | | | | | | | | | | | | | | | | | |
| Total exports | | | | | | | | | | | | | | | | | | | |
| Total sales | 6,382 | | | 6,382 | 7,057 | 75 | | 7,132 | 12,967 | | | | | | 19,213 | | 136 | 19,350 | |
| Total stock on hand # | | | | | | | | | | | | | | | | | | | |
| TOTAL | | | | | | | | | | | | | | | | | | | |
| Total supermarket sales | 79,353 | | 161 | 79,514 | 6,428 | | 22 | 6,450 | 11,727 | 56,312 | | | | 56,312 | 10,239 | 101,279 | | 201 | 101,480 |
| Total non supermarket sales | 30,008 | | 4,051 | 34,059 | 9,155 | 716 | 755 | 10,626 | 19,320 | | | | | | 46,653 | 1,302 | 5,424 | 53,379 | |
| Total exports | 967 | | | 967 | 260 | | | 260 | 473 | | | | | | 1,440 | | | 1,440 | |
| Total sales | 110,328 | | 4,212 | 114,540 | 15,843 | 716 | 777 | 17,336 | 31,520 | 56,312 | | | | 56,312 | 10,239 | 149,372 | 1,302 | 5,625 | 156,299 |
| Total stock on hand | 59,117 | | 6,163 | 65,279 | 7,140 | 37 | 1,437 | 8,614 | 15,662 | 376 | | | | 376 | 68 | 72,167 | | 67 | 81,010 |

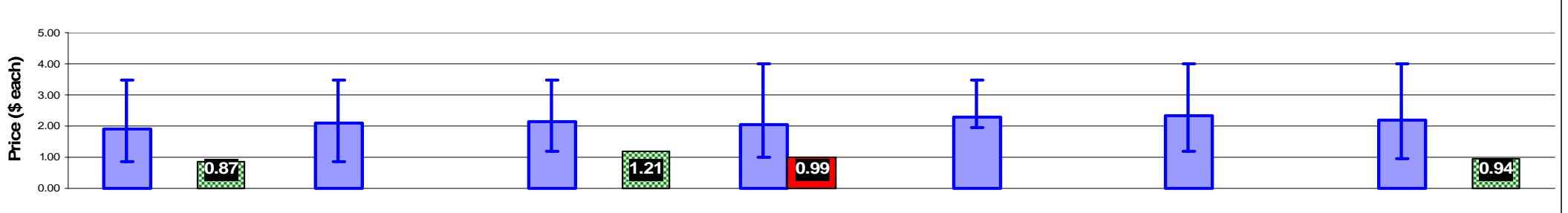
Weekly National Sales



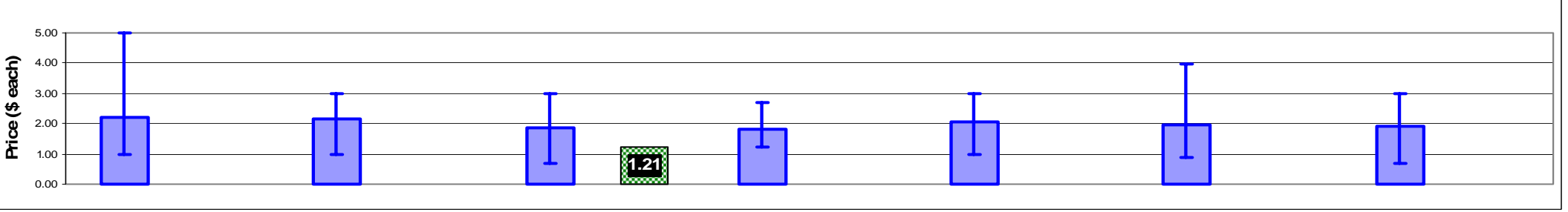
Average Avocado Retail Prices - Brisbane



Average Avocado Retail Prices - Sydney



Average Avocado Retail Prices - Melbourne



Average Avocado Retail Prices - Perth

