



INFOCADO WEEKLY REPORT

5th - 11th July 2008 (Wk 28)

Green shading indicates dispatch data

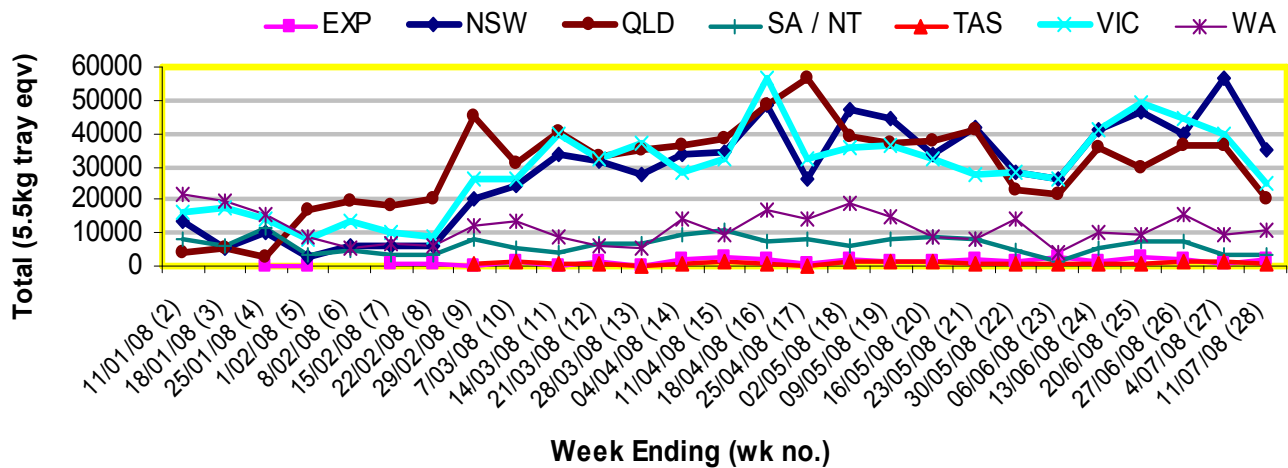
Yellow shading indicates forecast data

Industry Dispatches 5th - 11th July 2008 (Wk 28)

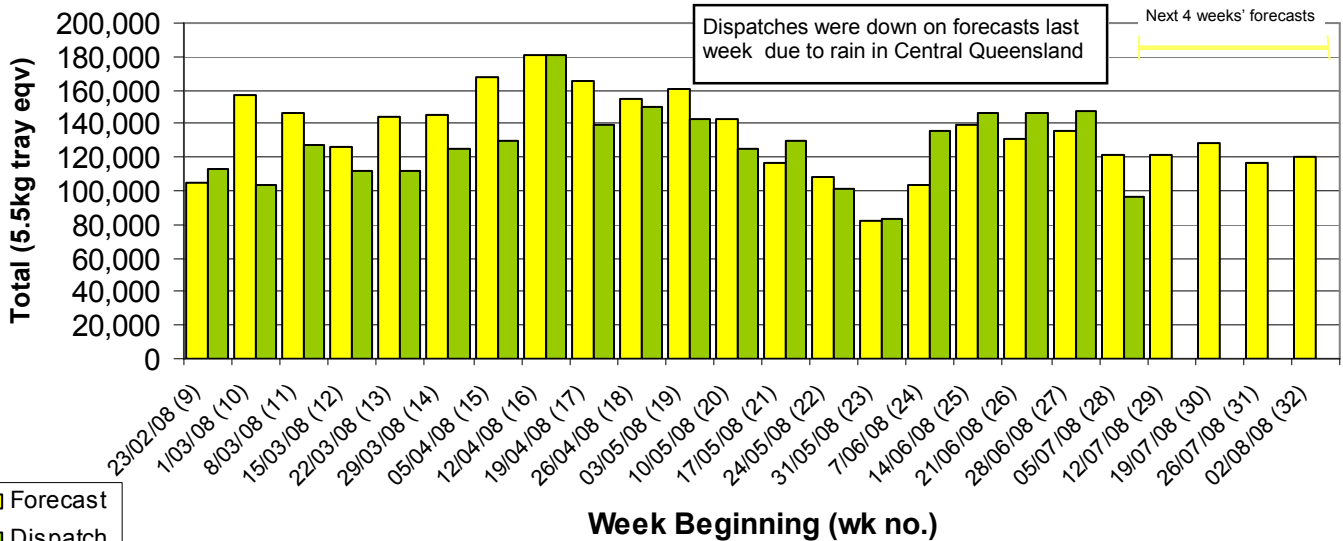
Dest. State	5.5kg	5.5kg	5.5kg	5.5kg	5.5kg	5.5kg	5.5kg	5.5kg	5.5kg	5.5kg	Bulk	P/PK	Oil	Other	5.5Kg Eqv Trays All	
	<16	16	18	20	22	23	25	28	28+	Total					10Kg	Kg
EXP				200					680	958	1,838	105				2,029
NSW	142	578	12,671	3,698	765	6,946	2,486	2,099	245	29,630	2,532	5,064			400	35,228
QLD	74	141	618	6,750	64	2,566	2,899	1,583	628	15,323	1,512	4,218	7,896	350		20,339
SA / NT	230	42	57	126	9	319	1,832	433		3,048	140					3,303
TAS								410		410						410
VIC	80	1,806	10,555	2,832	687	1,487	2,957	533	38	20,975	1,436	6,860				24,833
WA		7	58	2,805	72	3,161	579	188		6,870	1,237	7,440				10,472
Total	526	2,574	23,959	16,411	1,597	14,479	11,163	5,516	1,869	78,094	6,962	23,582	7,896	750		96,612

Throughput Australian avocados by destination State

Throughput 1st January 2008 to date = 2,925,254 5.4kg tray eqv



Dispatch vs weekly forecast for Australian Avocados - all varieties and all packs (23rd February 2008 to 8th August 2008)



Major Capital City Weather Report – week ahead

City	Tue	Wed	Thu	Fri	Public Hols	School Holidays
Brisbane	24°	20°	23°	24°	13th Aug - Royal Show	20th Sept - 5th Oct
Melbourne	17°	15°	15°	14°	4th Nov - Melb. Cup Day	20th Sept - 5th Oct
Perth	18°	16°	18°	16°	29th Sept - Queen's B/day	5th Jul - 20th Jul
Sydney	20°	18°	19°	19°	4th Aug - Bank Holiday	5th Jul - 20th Jul

Forecast Data (Week 28-32)

Variety	Trays - Total	Bulk	P/Pk	Oil	All - Total
	5.5Kg Eqv	10Kg	Kg	Kg	5.5Kg Eqv

Week 28 - begin 5/07/08

Bacon		120			218
Fuerte	380	190			725
Hass	94,487	10,880	15,400	5,400	118,051
Lamb Hass	100				100
Sharwil	1,900	40	1,000		2,155
Wurtz	600	50			691
Week Total	97,467	11,280	16,400	5,400	121,940

Week 29 - begin 12/07/08

Bacon		200			364
Fuerte	380	218			776
Hass	91,069	10,610	15,500	5,400	114,160
Lamb Hass	100				100
Reed	4,000				4,000
Sharwil	1,300	40	1,000		1,555
Wurtz	500	100			682
Week Total	97,349	11,168	16,500	5,400	121,636

Week 30 - begin 19/07/08

Bacon		40			73
Fuerte	80	210			462
Hass	96,708	11,700	10,500	5,400	120,872
Lamb Hass	100	50			191
Reed	4,000				4,000
Sharwil	1,350	10	1,000		1,550
Wurtz	1,200	100			1,382
Week Total	103,438	12,110	11,500	5,400	128,529

Week 31 - begin 26/07/08

Fuerte	80	170			389
Hass	90,754	10,225	10,600		111,272
Lamb Hass	100	50			191
Reed	4,000				4,000
Sharwil	1,100		1,000		1,282
Week Total	96,034	10,445	11,600		117,134

Week 32 - begin 02/08/08

Bacon		40			73
Fuerte	80	238			513
Hass	93,055	10,305	10,700		113,736
Reed	4,000				4,000
Sharwil	1,120		1,000		1,302
Wurtz	800				800
Week Total	99,055	10,583	11,700		120,424

Dispatch Data (Week 28 - begin 05/07/08)

Variety	Trays	Bulk	P/Pk	Oil	Other	5.5Kg Eqv
	5.5kg eqv	10Kg	Kg	Kg	Kg	Total Trays

Bacon		192				349
Fuerte	94	43				172
Hass	76,472	6,155	21,932	7,896	750	93,223
Reed	264	74				399
Sharwil	854	207	1,650			1,530
Wurtz	411	291				940
Total	78,095	6,962	23,582	7,896	750	96,613

Week 28 contributors

Balmoral Orchard	Touchwood Farming
Donovan Avocados	Mountain Fresh
G & C Christensen	Mt Binga Orchards Pty Ltd
G & J Krenske	Natures Fruit Company
Green Nugget Orchards	One Harvest
Jirel Holdings	Simpsons Farms Pty Ltd
Lavers Orchards	Summerland HWNS
Merrinee Farms	Sunfresh
Tenterfield Fruit Packers	Sunny Bluff Produce Pty Ltd
Tropicado Avocados	Sunnyspot Packhouse PL

Percentage dispatched by region (Based on seasonal forecast - 2008)

