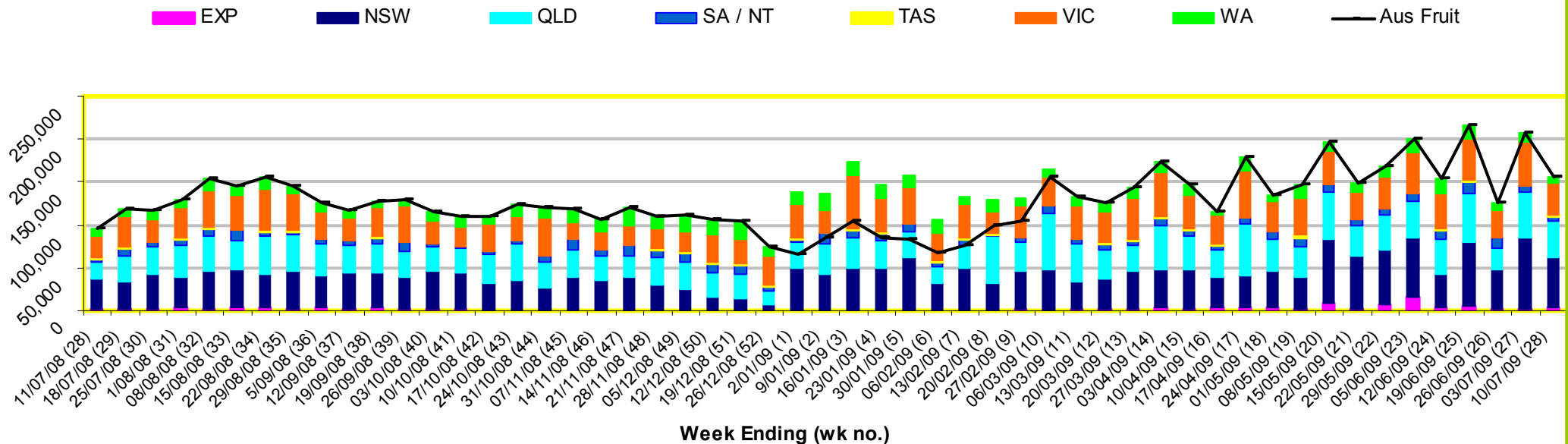


INFOCADO WEEKLY REPORT: 4th - 10th July 2009 (Wk 28)

Industry Dispatches 4th-10th July 2009 (Wk 28)

Dest. State	5.5kg	5.5kg	5.5kg	5.5kg	5.5kg	5.5kg	5.5kg	5.5kg	5.5kg	5.5kg	Bulk	P/PK	Proc	Other	5.5Kg Eqv Trays All
	<16	16	18	20	22	23	25	28	28+	Total	10Kg	Kg	Kg	Kg	Total
EXP								2,473	1,541	4,014	118				4,229
NSW	218	743	4,361	9,353	2,072	11,620	5,306	2,661	458	36,792	10,540	6,170			57,078
QLD	30	163	854	3,227	268	6,586	9,430	6,113	471	27,142	6,040	19,795	7,200	397	43,104
SA / NT			3	30		73	3,903			4,009	512	456			5,023
TAS						445	1,869			2,314		192			2,349
VIC	339	881	6,649	7,692	1,189	3,440	3,089	1,467	242	24,988	6,262	6,270			37,513
WA				152		1,484	1,354			2,990	2,232				7,048
Total	587	1,787	11,867	20,454	3,529	23,648	24,951	12,714	2,712	102,249	25,704	32,883	7,200	397	156,344

Throughput Australian & NZ avocados by destination State Throughput 1st January 2009 to date = 4,313,985 5.5kg tray eqv



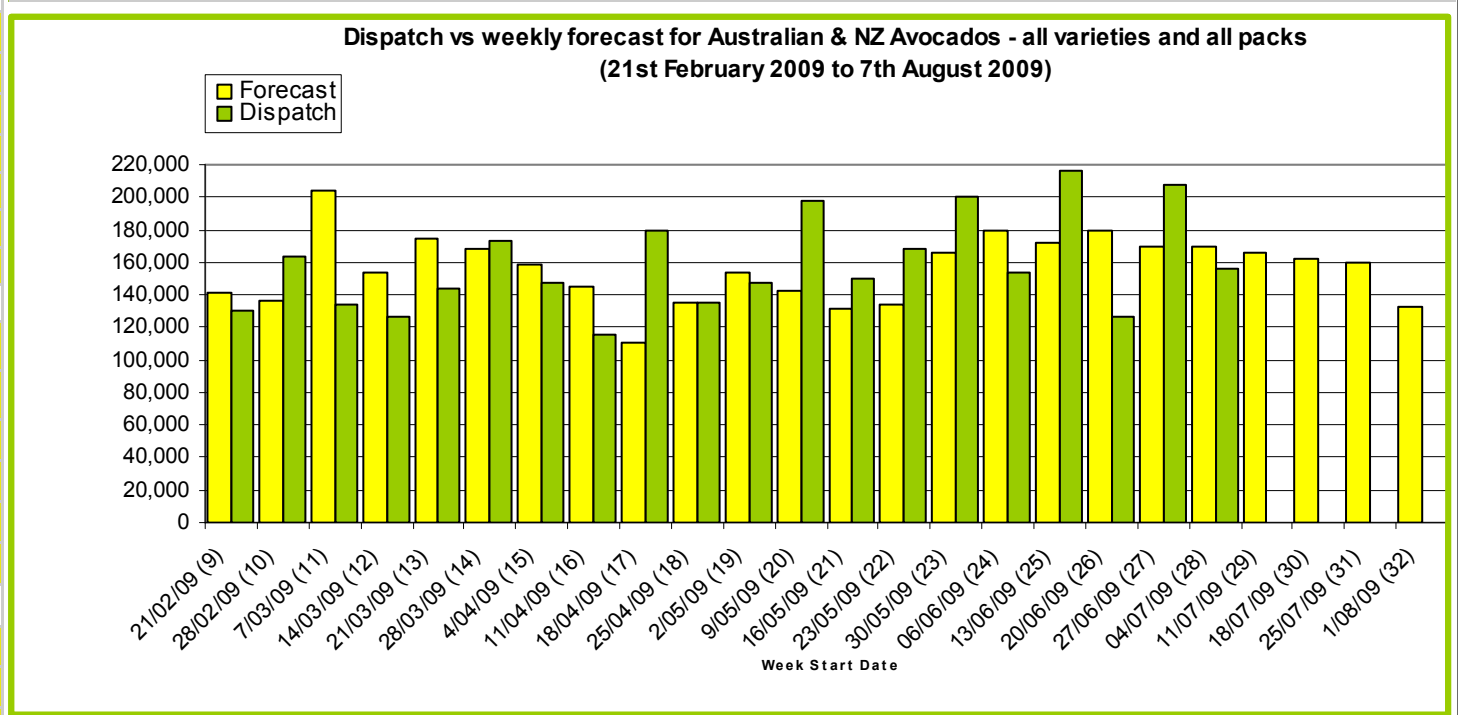
Comments from the CEO

- Forecasts improved last week in terms of accuracy so we hope that trend continues.
- The July quarterly report will be distributed by the end of this week.
- New Zealand forecasts for the 2009/2010 season will be updated for next week's weekly report.
- **See you at the conference... which by the way is not an excuse for not getting your Infocado figures in!**



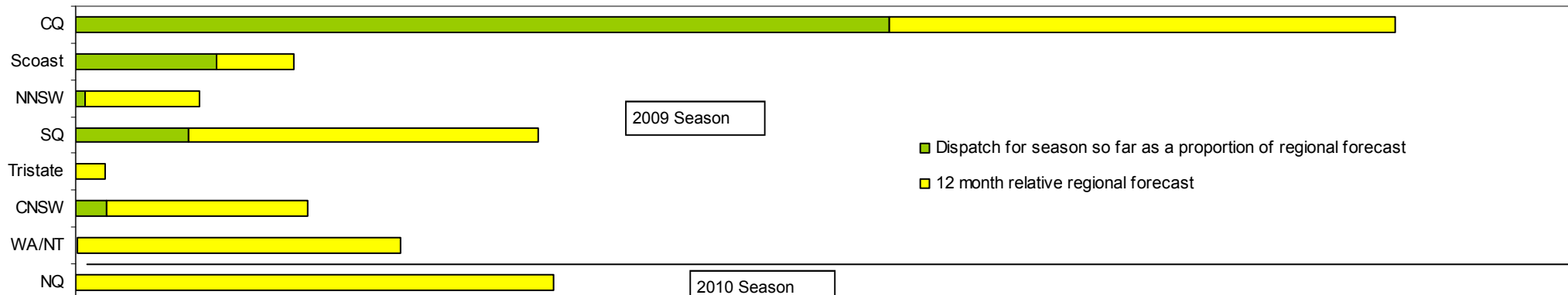
Forecast Data (Week 28 - 32)						
Variety	Trays - Total	Bulk	P/Pk	Proc	Other	All - Total
	5.5Kg	10Kg	Kg	Kg	Kg	5.5Kg Eqv
Week 28 - begin 4/07/09						
Bacon		40				73
Fuerte		120				218
Hass	138,162	12,120	26,400	6,000	180	166,122
Pinkerton	80					80
Sharwil	1,450	30	3,000			2,050
Wurtz	600	20				636
Week Total	140,292	12,330	29,400	6,000	180	169,179
Week 29 - begin 11/07/09						
Bacon		20				36
Fuerte		188				342
Hass	135,737	11,980	23,700	7,600	180	163,243
Pinkerton	300				150	327
Sharwil	700	220	2,640			1,580
Wurtz	600	10				618
Week Total	137,337	12,418	26,340	7,600	330	166,146
Week 30 - begin 18/07/09						
Fuerte		40				73
Hass	134,737	11,019	23,700	7,600	150	160,490
Pinkerton	200				100	218
Sharwil	50	20	2,640			566
Wurtz	500					500
Week Total	135,487	11,079	26,340	7,600	250	161,847
Week 31 - begin 25/07/09						
Fuerte	70	140				325
Hass	131,966	11,319	23,700	7,600	200	158,273
Sharwil	50	10	2,640			548
Wurtz	600	20				636
Week Total	132,686	11,489	26,340	7,600	200	159,782
Week 32 - begin 1/08/09						
Fuerte	70	180				397
Hass	113,337	7,989	16,600	7,600	150	132,289
Sharwil	50	10	2,640			548
Week Total	113,457	8,179	19,240	7,600	150	133,235

Green shading indicates dispatch data			Yellow shading indicates forecast data			
Dispatch Data (Week 28 - begin 4/07/09)						
Variety	Trays	Bulk	P/Pk	Proc	Other	5.5Kg Eqv
	5.5kg eqv	10Kg	Kg	Kg	Kg	Total Trays
Bacon		40				73
Fuerte		120				218
Hass	98,877	24,829	30,837	7,200	107	150,956
Pinkerton	411				290	464
Reed	63	6				74
Sharwil	975	353	2,046			1,989
Shepard	17	6				28
Wurtz	1,905	350				2,541
Total	102,248	25,704	32,883	7,200	397	156,343

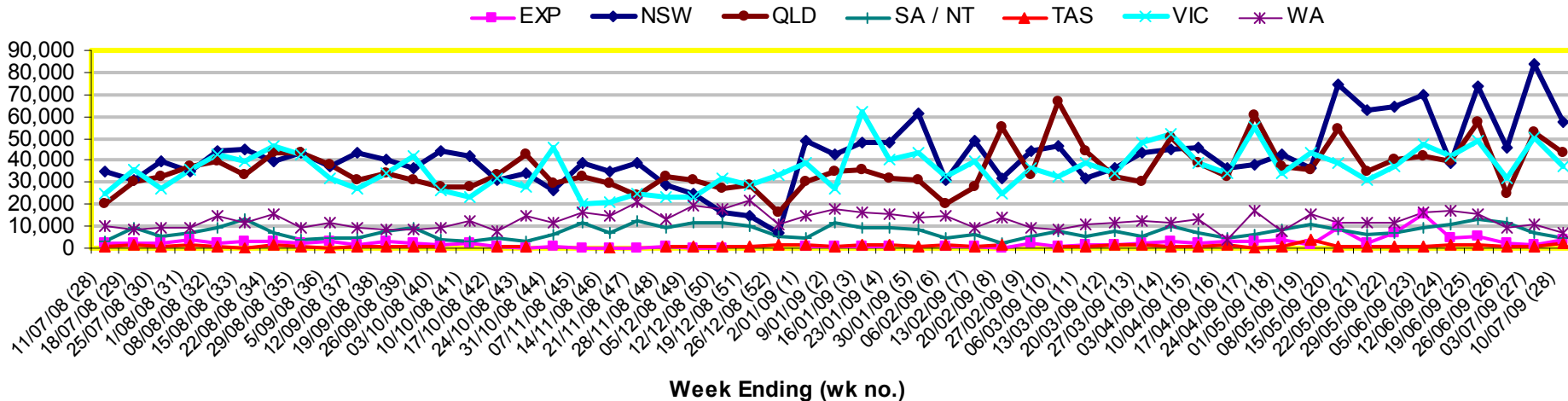


New Zealand Avocado Exports—Forecast v Import Statistics (5.5kg eqv trays) August 2008-April 2009										
Export Dest'n	Aug	Sep	Oct	Nov	Dec	Jan	Feb	Mar	Apr	Total to date
NZ Export Forecast		26,730	177,487	319,958	378,497	304,722	122,824	6,282		1,336,500
Australia		7,713	210,274	312,989	345,200	235,527	150,635			1,262,338
USA										
Japan		3,920	21,563	37,519	27,534	9,600				100,135
Total		11,633	231,837	350,508	372,734	245,127	150,635			1,362,657

Percentage dispatched by region 2009 Season (Based on seasonal forecast - 2009)



Throughput Australian & NZ avocados by destination State
Throughput 1st January 2009 to date = 4,313,985 5.5kg tray eqv



Week 28 contributors - Packhouses

- | | |
|---------------------------------|--------------------------------|
| Balmoral Orchard | One Harvest |
| Coastal Avocados | Serrata Enterprises |
| Donovan Family Investment Trust | Simpson Farms Pty Ltd |
| G & J Krenske | Summerland House With No Steps |
| I & A Tolson | Sunfresh |
| J & K Hummer | Sunny Bluff Produce Pty Ltd |
| Midcoast Avocados | Sunnyspot Packhouse PL |
| Mount Hallen Avocados | SuperPak |
| Mountain Fresh | The I & R Family Trust |
| Natures Fruit Company | Touchwood Farming |

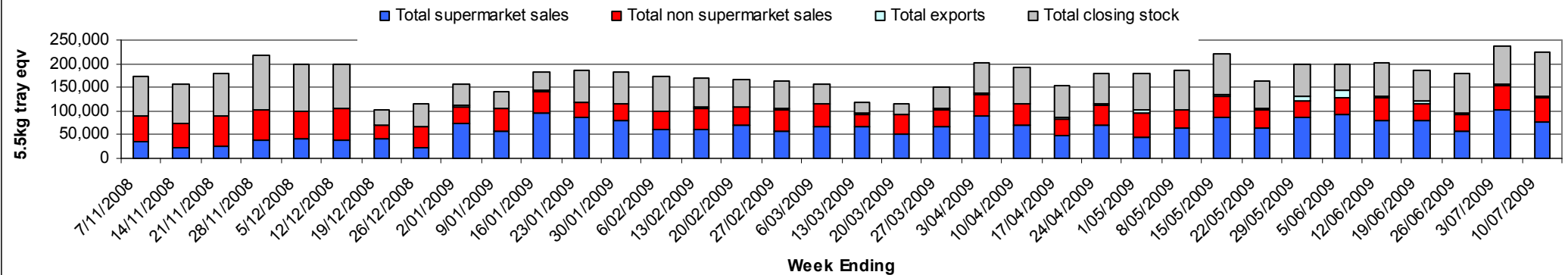
Week 28 contributors - Wholesalers

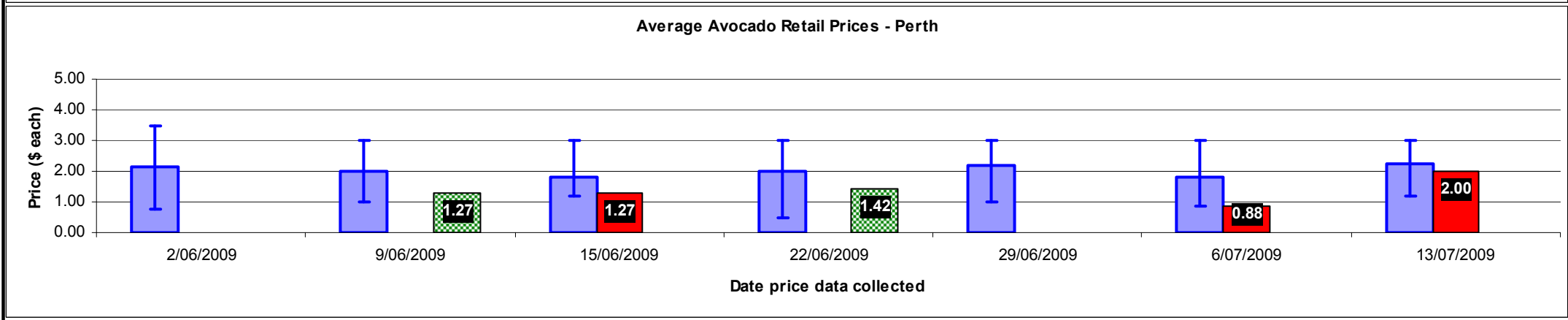
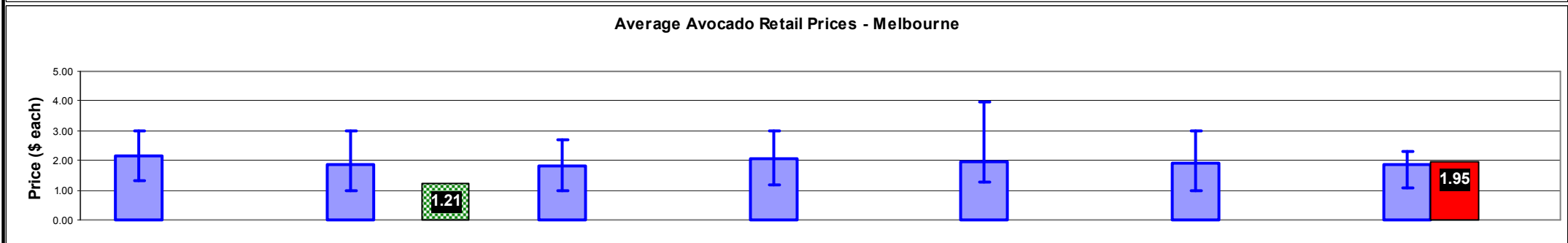
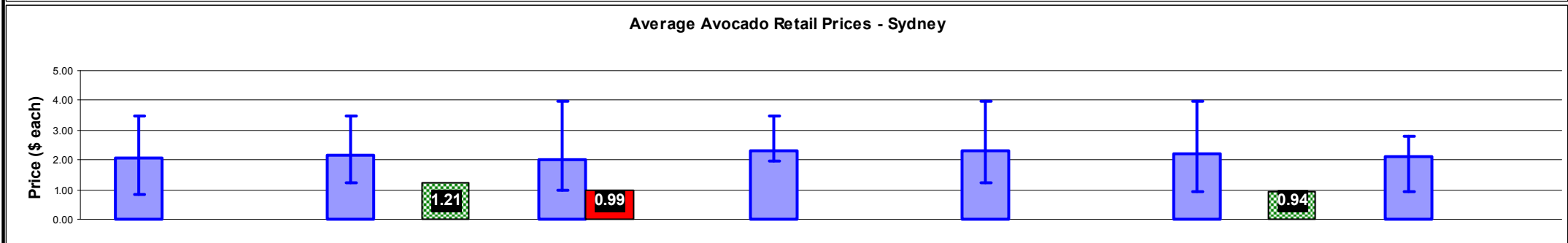
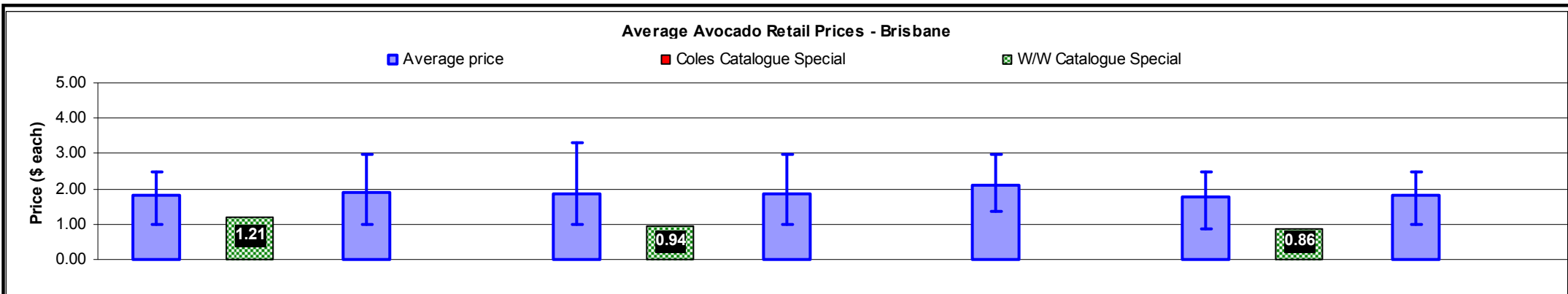
- | | |
|-----------------------------------|---------------------------------|
| Barkers (Melbourne) | Murray Bros (Brisbane) |
| Costa Exchange Trading (Adelaide) | Romeos Marketing (Brisbane) |
| Costa Exchange Trading (Brisbane) | Sculli & Co Pty Ltd (Melbourne) |
| Dykes Bros (Melbourne) | The La Manna Group (Adelaide) |
| Etherington (Perth) | The La Manna Group (Brisbane) |
| Kelly's (Melbourne) | The La Manna Group (Melbourne) |
| Mercer Mooney (Perth) | United Fresh (Adelaide) |

Sales Report including Direct Sales from Packhouses, Wholesale Sales and Stock on Hand at Wholesale Level

	Trays 5.5kg eqv (incl. Mod6 & P84)				Bulk 10kg Cartons					Pre-Pack Kg					Total (5.5kg eqv)			
	Hass	Shepard	Other	Total	Hass	Shepard	Other	Total	5.5kg eqv	Hass	Shepard	Other	Total	5.5kg eqv	Hass	Shepard	Other	Total
NSW																		
Total supermarket sales																		
Total non supermarket sales																		
Total exports																		
Total sales																		
Total stock on hand																		
QLD																		
Total supermarket sales	21,020	13		21,033	1,728	6		1,734	3,153	15,903		2,046	17,949	3,263	27,054	24	372	27,449
Total non supermarket sales	13,673		193	13,866	851			851	1,547						15,220		193	15,413
Total exports	3,414			3,414	118			118	215						3,629			3,629
Total sales	38,107	13	193	38,313	2,697	6		2,703	4,915	15,903		2,046	17,949	3,263	45,902	24	565	46,491
Total stock on hand	34,644		875	35,519	1,381		64	1,445	2,627	202			202	37	37,192		991	38,183
SA & TAS																		
Total supermarket sales	8,170			8,170	384			384	698	1,014			1,014	184	9,052			9,052
Total non supermarket sales	3,894		32	3,926	922		1	923	1,678						5,570		34	5,604
Total exports																		
Total sales	12,064		32	12,096	1,306		1	1,307	2,376	1,014			1,014	184	14,623		34	14,657
Total stock on hand #	4,192		488	4,680	1,066		95	1,161	2,111	275			275	50	6,180		661	6,841
VIC																		
Total supermarket sales	10,464			10,464	987			987	1,795	6,270			6,270	1,140	13,399			13,399
Total non supermarket sales	7,236	390	646	8,271	1,860		381	2,241	4,075						10,618	390	1,338	12,346
Total exports																		
Total sales	17,700	390	646	18,736	2,847		381	3,228	5,869	6,270			6,270	1,140	24,016	390	1,338	25,745
Total stock on hand	23,075	131	5,555	28,761	5,371		1,157	6,528	11,869						32,840	131	7,659	40,630
WA																		
Total supermarket sales																		
Total non supermarket sales																		
Total exports																		
Total sales	9,021		136	9,157	7,756	170	5	7,931	14,420						23,123	309	145	23,577
Total stock on hand #																		
TOTAL																		
Total supermarket sales	57,918	13		57,931	7,286	6		7,292	13,258	28,149		2,046	30,195	5,490	76,283	24	372	76,679
Total non supermarket sales	30,995	390	1,007	32,391	9,427	170	387	9,984	18,153						48,135	699	1,710	50,544
Total exports	4,014			4,014	118			118	215						4,229			4,229
Total sales	92,927	403	1,007	94,336	16,831	176	387	17,394	31,625	28,149		2,046	30,195	5,490	128,646	723	2,082	131,452
Total stock on hand	67,256	131	6,918	74,305	9,599	22	1,325	10,946	19,902	477			477	87	84,795	171	9,327	94,293

Weekly National Sales



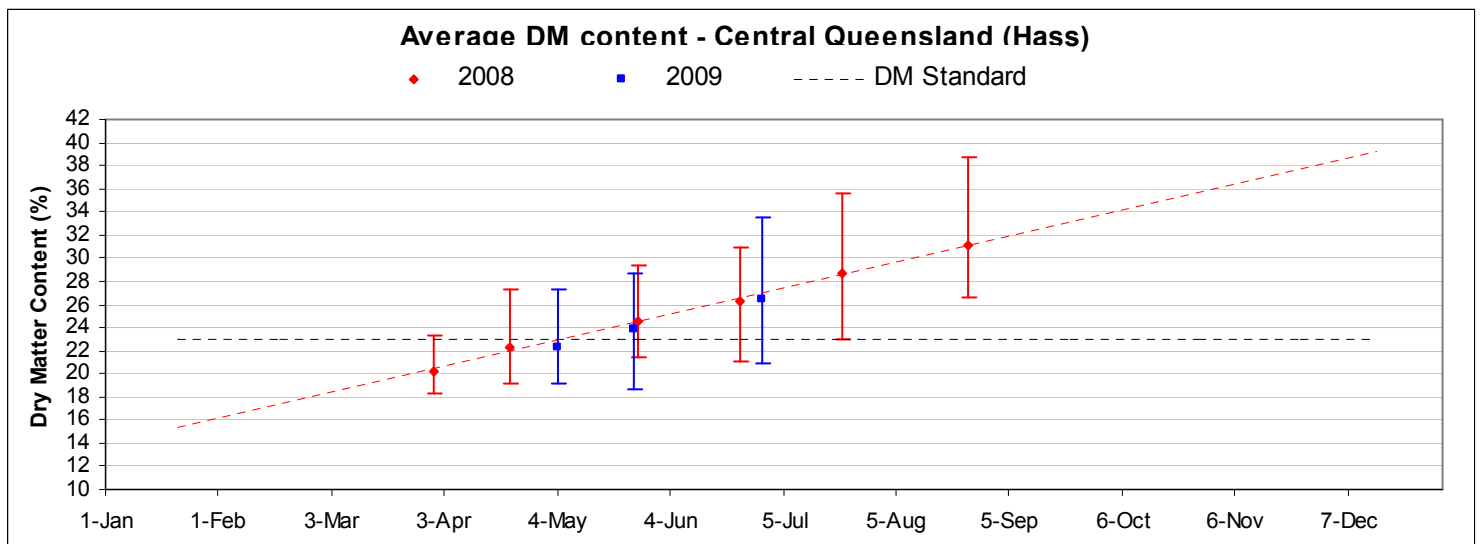
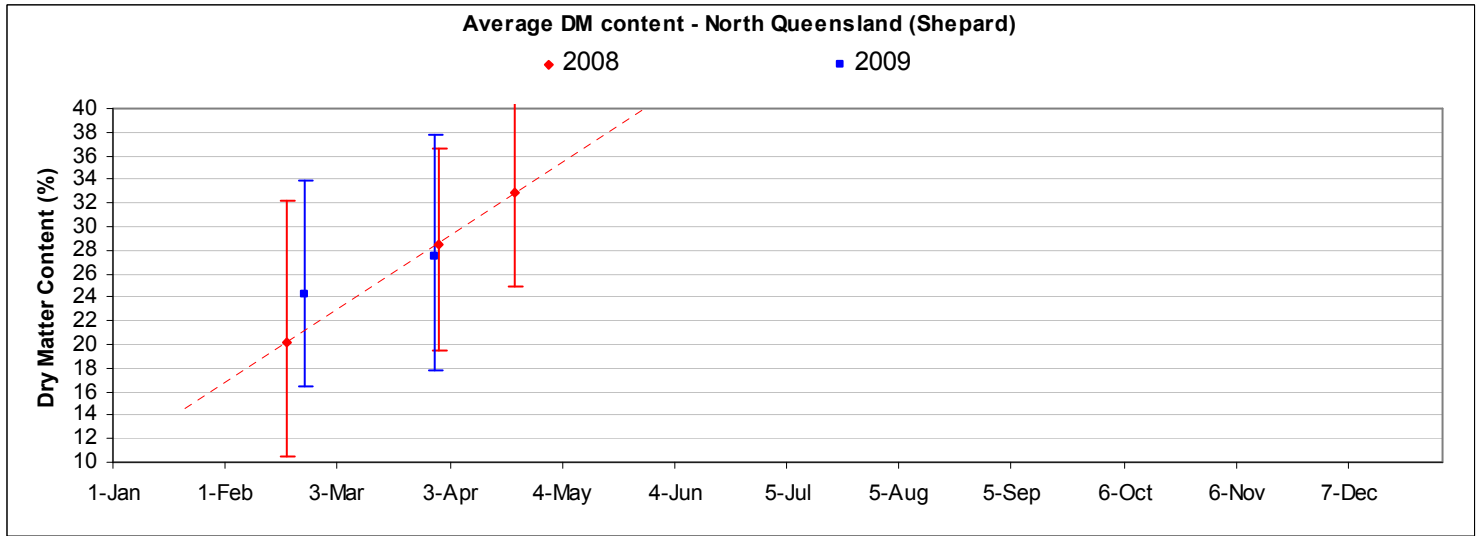
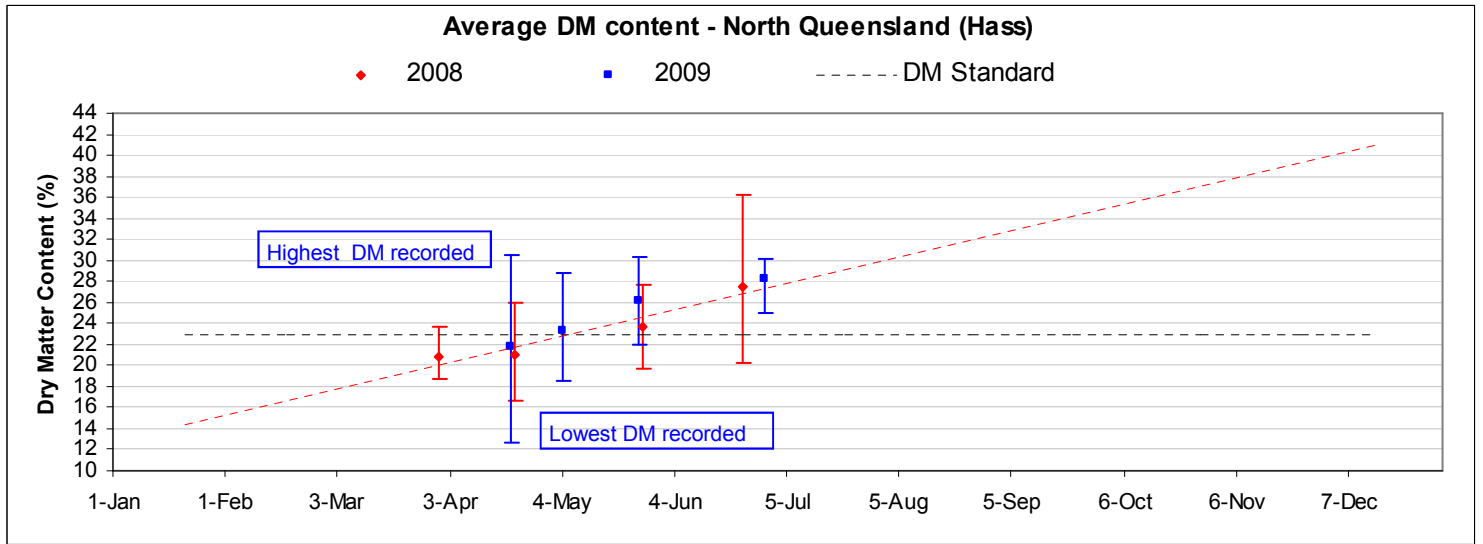




Avocado DM Content Report

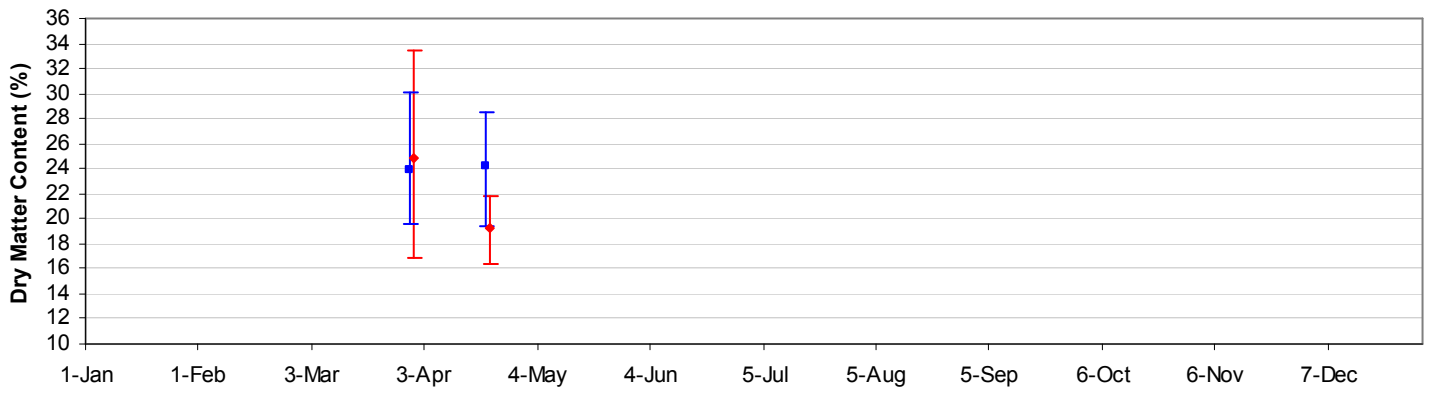
Fruit collected 29th June 2009

Dry Matter Intervals	Proportion of Fruit tested for each Dry matter interval 29th June 2009									
	NQ		CQ		SC	SQ	NNSW	CNSW	Tri	WA
	Hass	Shepard	Hass	Shepard	Hass	Hass	Hass	Hass	Hass	Hass
<=18%	0%		0%		0%	0%	0%			
18.1%-20.9%	0%		0%		5%	0%	0%			
21%-22.9%	0%		2%		25%	28%	5%			
23%-28%	30%		78%		63%	60%	65%			
27.1%-40%	70%		20%		8%	13%	30%			
>40%	0%		0%		0%	0%	0%			



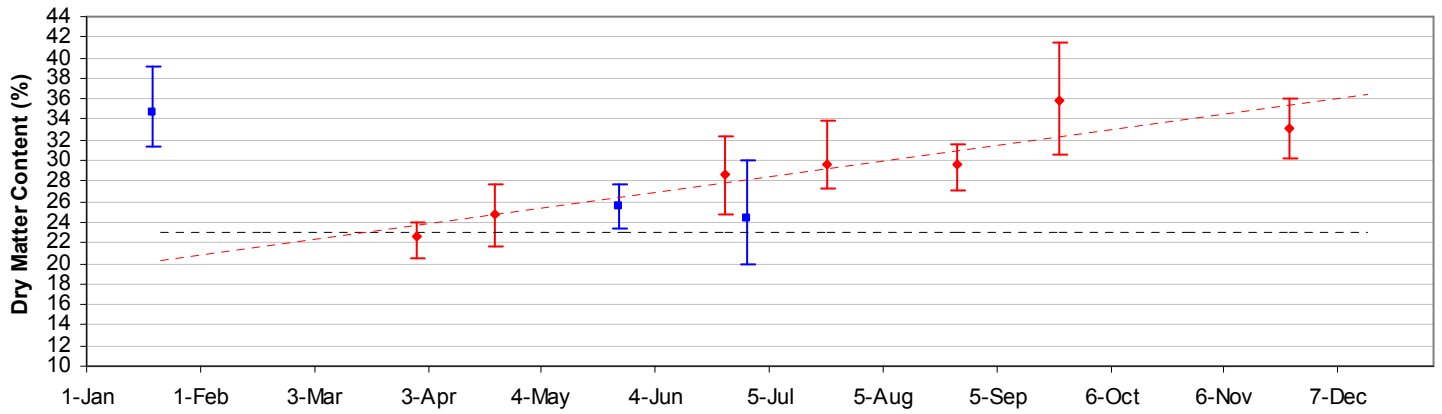
Average DM content - Central Queensland (Shepard)

◆ 2008 ■ 2009



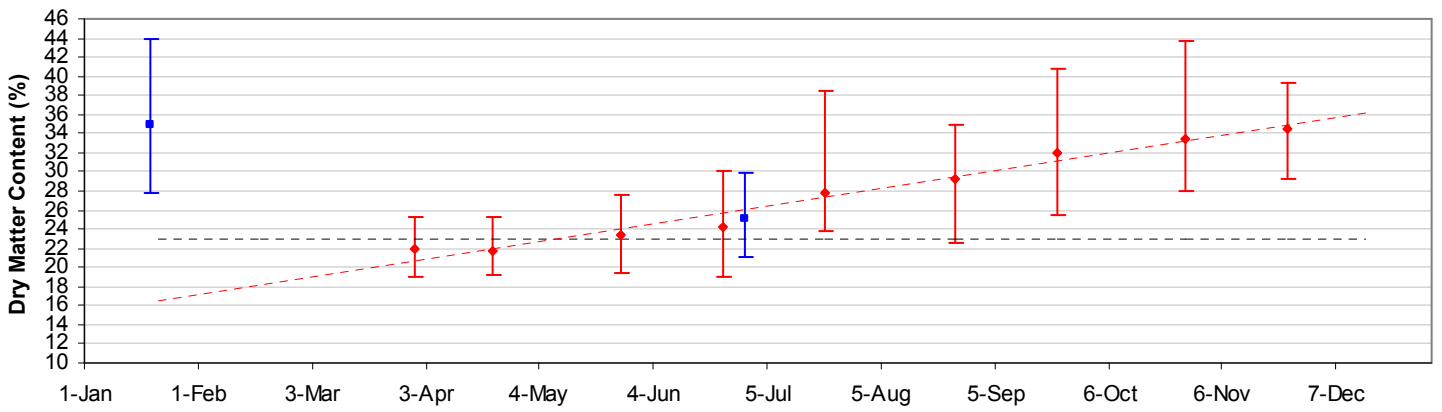
Average DM content - Sunshine Coast (Hass)

◆ 2008 ■ 2009 - - - - - DM Standard



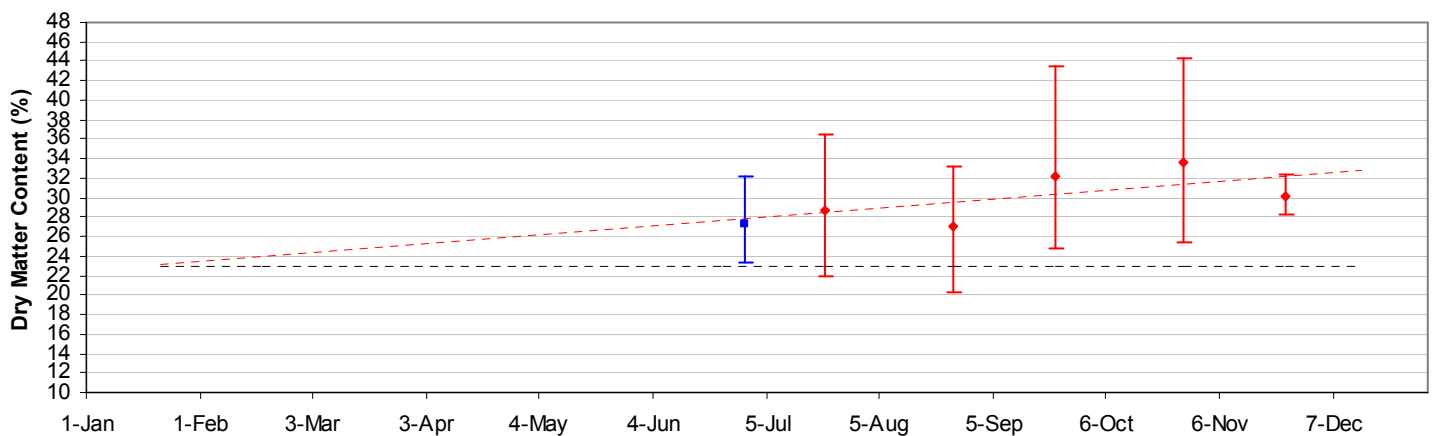
Average DM content - South Qld (Hass)

◆ 2008 ■ 2009 - - - - - DM Standard



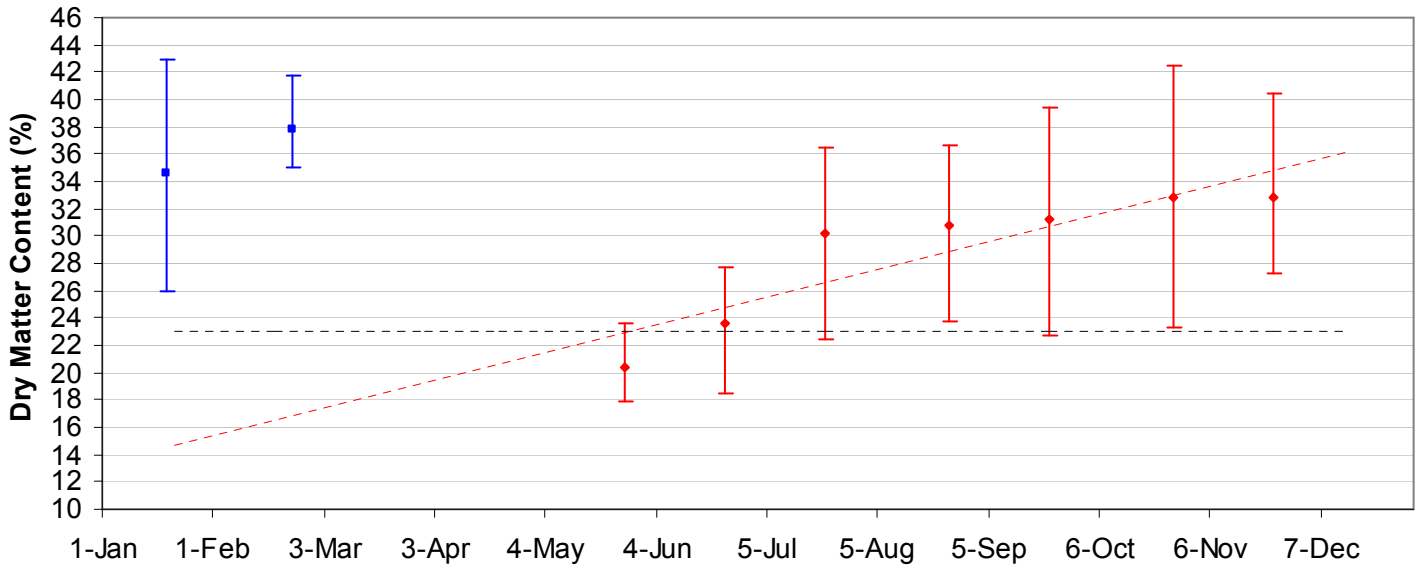
Average DM content - Northern NSW (Hass)

◆ 2008 ■ 2009 - - - - - DM Standard



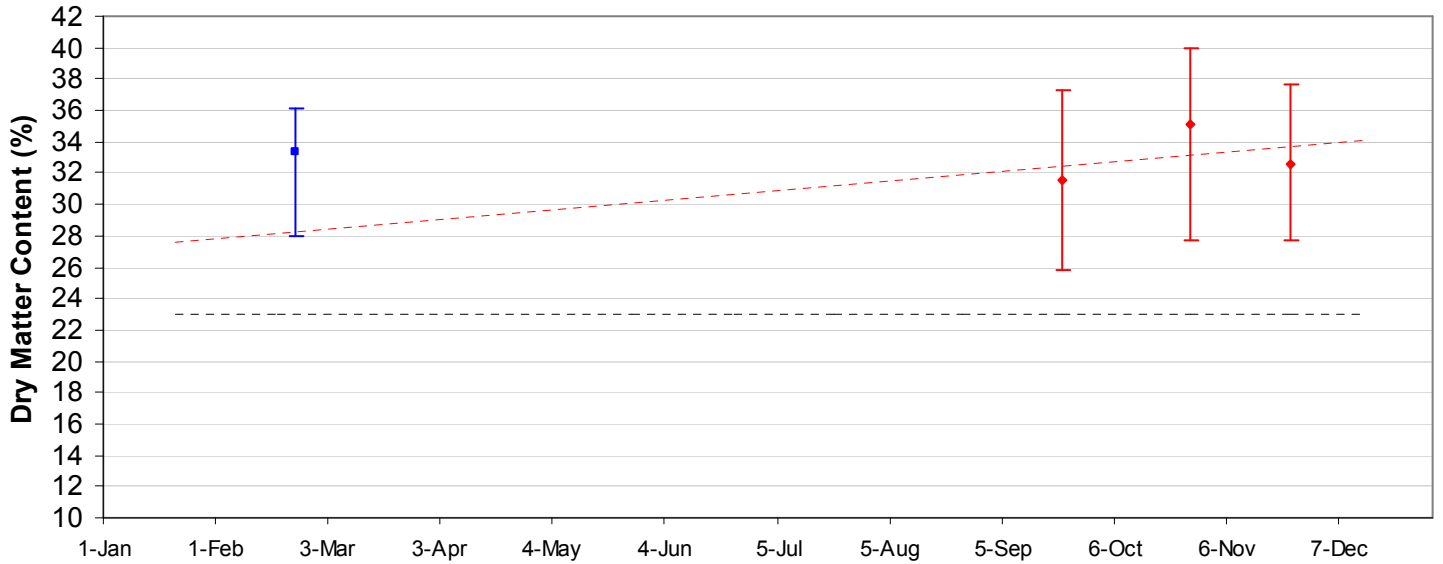
Average DM content - Central NSW (Hass)

◆ 2008 ■ 2009 - - - - DM Standard



Average DM content - Tristate (Hass)

◆ 2008 ■ 2009 - - - - DM Standard



Average DM content - WA (Hass)

◆ 2008 ■ 2009 - - - - DM Standard

