



INFOCADO WEEKLY REPORT

14th July to 20th July 2007 (Wk 29)

Green shading indicates dispatch data

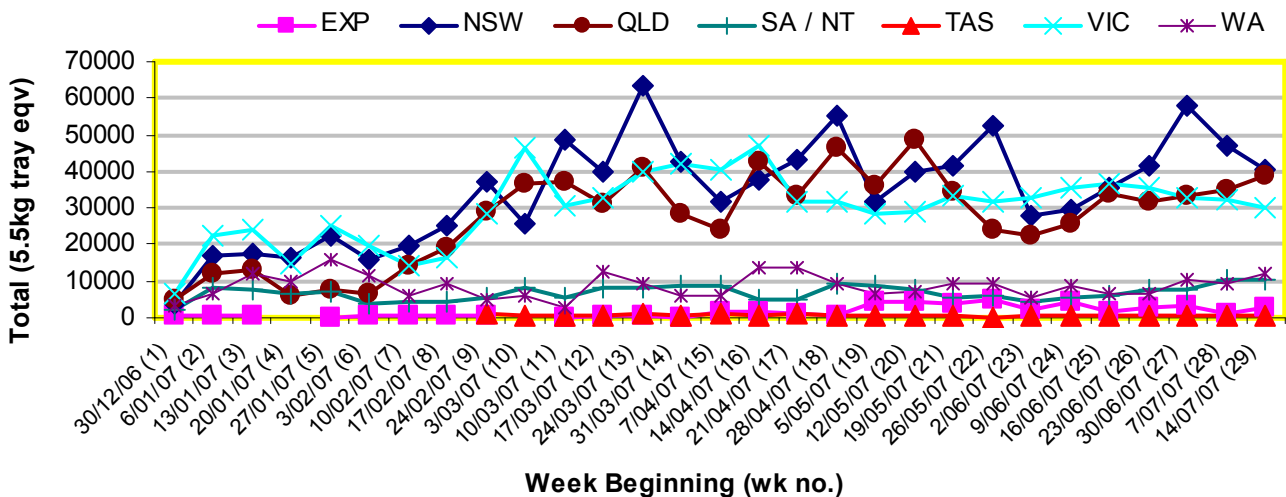
Yellow shading indicates forecast data

Industry Dispatches 14th to 20th July 2007 (Wk 29)

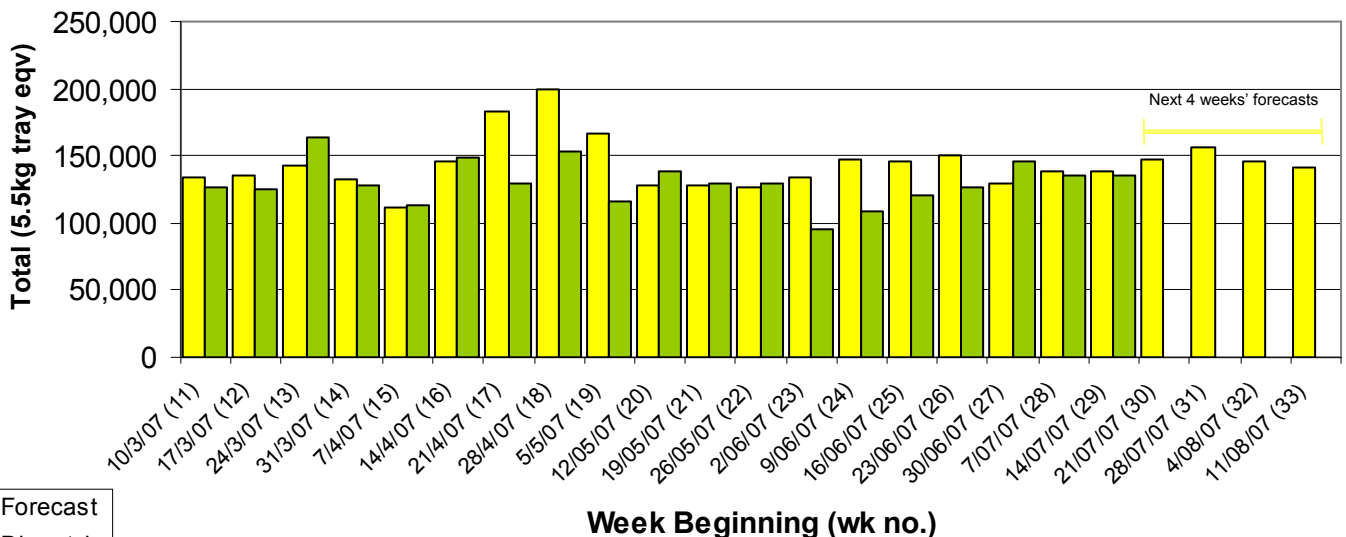
Dest. State	5.5kg										Bulk	P/PK	Other	5.5Kg Eqv Trays All	
	<16	16	18	20	22	23	25	28	28+	Total					
EXP				180					1,420	1,096	2,696	60			2,805
NSW	11	284	3,126	16,569	744	4,517	4,404	2,514	1,113	33,282	3,145	8,536		40,552	
QLD		333	546	1,468	5,098	5,357	8,330	5,885	329	27,346	3,143	27,968	4,950	39,046	
SA / NT		41	68	383	71	205	5,398	432		6,598	1,728	2,640		10,220	
TAS								432		432				432	
VIC	37	1,346	1,400	8,020	1,146	4,820	2,649	921	47	20,386	4,356	10,472		30,210	
WA		57	519	585		2,557	3,762	442		7,922	1,864	4,560		12,140	
Total	48	2,061	5,659	27,205	7,059	17,456	24,975	11,614	2,585	98,662	14,296	54,176	4,950	135,405	

Throughput Australian avocados by destination State

Throughput 1st January 2007 to date = 3,205,605 5.5kg tray eqv



Dispatch vs weekly forecast for all varieties and all packs (10th March 2007 to 18th August 2007)



Major Capital City Weather Report – week ahead

City	Wed	Thu	Fri	Sat	Public Hols	Upcoming school Hols
Brisbane	22°	22°	23°	23°	August 15—Royal Show Day	22nd Sep-7th Oct
Melbourne	17°	16°	14°	14°	November 6—Melbourne Cup Day	22nd Sep-7th Oct
Perth	18°	20°	19°	19°	October 1—Queen's B'day	29th Sep—15th Oct
Sydney	19°	20°	19°	23°	October 1—Labour Day	29th Sep-14th Oct

Forecast Data (Week 29-33)

Variety	Trays - Total	Bulk	P/Pk	Other	All - Total
	5.5Kg Eqv	10Kg	Kg	Kg	5.5Kg Eqv
Week 29—begin 14/7/07					
Bacon		88			160
Fuerte	50	100			232
Hass	108,917	10,972	22,044		132,874
Pinkerton	750	300			1,295
Sharwil	1,700	430			2,482
Wurtz	1,200	250			1,655
Week Total	112,617	12,140	22,044	0	138,698
Week 30—begin 21/7/07					
Fuerte	100	132			340
Hass	121,624	10,150	16,500	300	143,134
Pinkerton	250				250
Sharwil	1,100	435			1,891
Wurtz	1,200	250			1,655
Week Total	124,274	10,967	16,500	300	147,269
Week 31—begin 28/7/07					
Fuerte	100	160			391
Hass	128,633	10,771	16,500	300	151,272
Pinkerton	250				250
Sharwil	1,020	560			2,038
Wurtz	1,200	250			1,655
Week Total	131,203	11,741	16,500	300	155,605
Week 32—begin 4/8/07					
Fuerte	196	170			505
Hass	121,150	9,180	17,500		141,023
Sharwil	1,020	560			2,038
Wurtz	1,100	300			1,645
Week Total	123,466	10,210	17,500	0	145,212
Week 33—begin 11/8/07					
Fuerte	196	120			414
Hass	119,708	8,580	16,500		138,308
Sharwil	800	200			1,164
Wurtz	1,500	400			2,227
Week Total	122,204	9,300	16,500	0	142,113

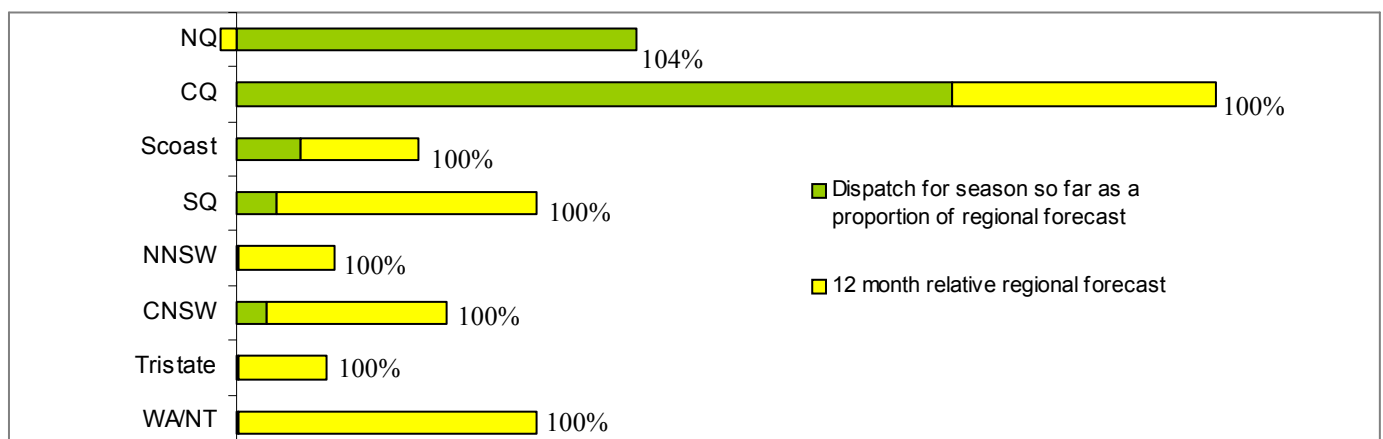
Dispatch Data (Week 29—begin 14/7/07)

Variety	Trays	Bulk	P/PK	Other	5.5Kg Eqv
	5.5kg eqv	10Kg	Kg	Kg	Total Trays
Fuerte	69	83			220
Hass	94,327	12,822	54,176	4,950	128,390
Pinkerton		290			527
Sharwil	1,048	354			1,692
Wurtz	3,218	747			4,576
Total	98,662	14,296	54,176	4,950	135,405

Week 29 contributors

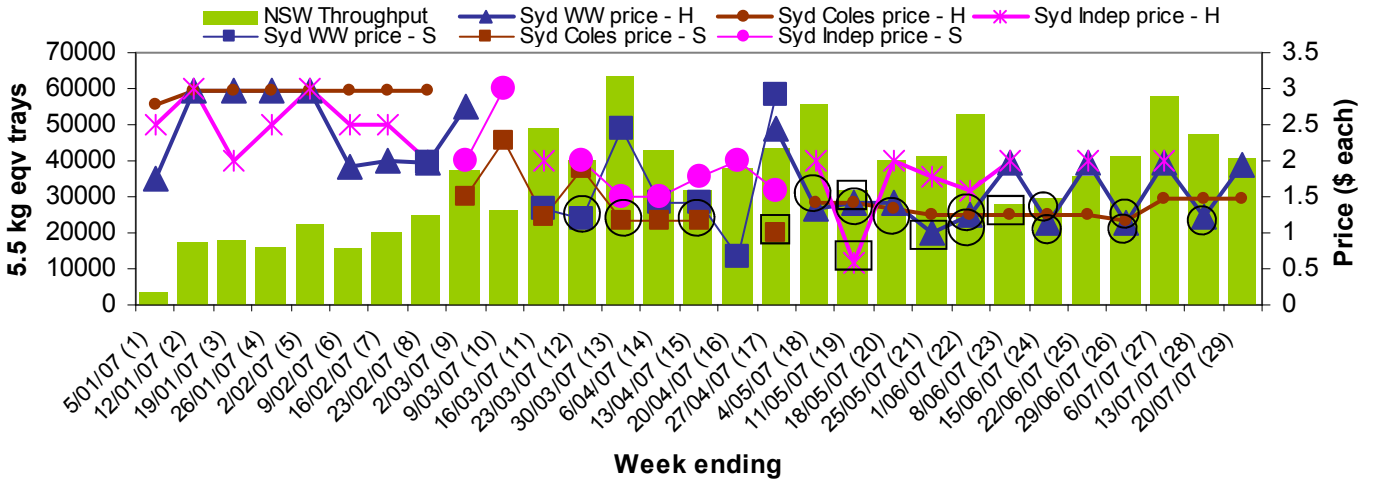
Avowest
 Balmoral Orchard
 BT & RG Pegg
 C F Fechner
 Coastal Avocados
 DJ Tottenham
 Donovan Avocados
 G & J Krenske
 G & R Ernest
 Goodlife Orchards
 Green Nugget Orchards
 Green Pear Avocado
 I & A Tolson
 J & K Hummer
 JC & SK Smythe
 Merrinee Farms
 Midcoast Avocados
 Mt Binga Orchards Pty Ltd
 Natures Fruit Company
 One Harvest
 RG & DV Rohde
 RM & KL Cornwall
 Rocky Creek Orchards
 Simpsons Farms Pty Ltd (1)
 Sunfresh
 Sunny Bluff Produce Pty Ltd
 Sunnyspot Packhouse PL
 Touchwood Farming
 Tropicado Avocados

Percentage dispatched by region (Based on seasonal forecast - 2007)

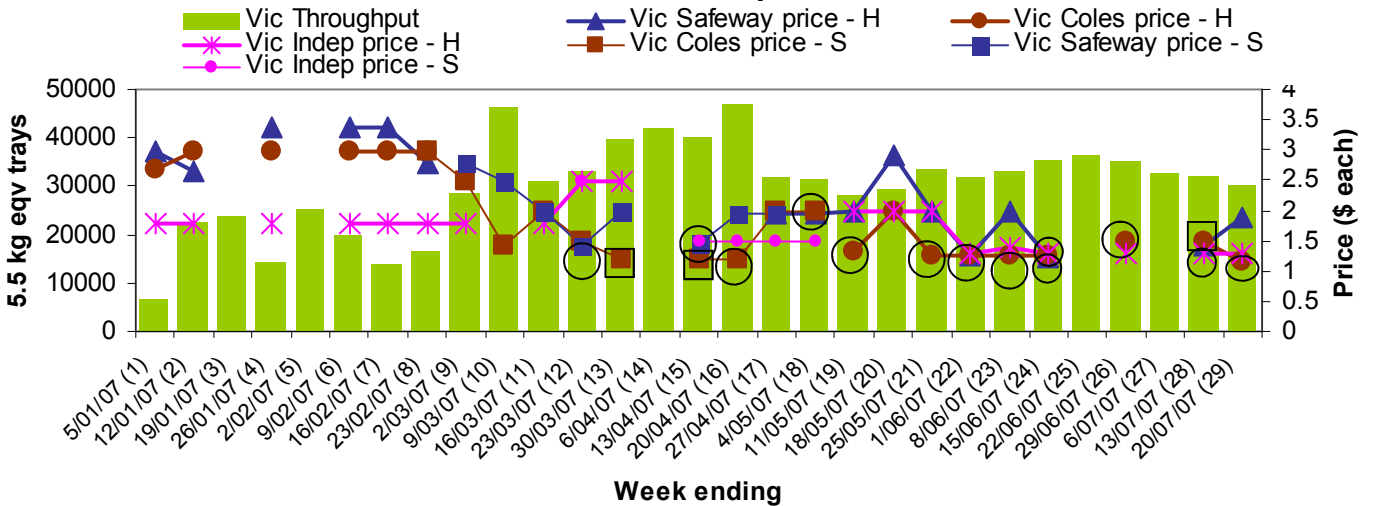


NB: H = Hass, S= Shepard, ○ = catalogue special □ = store special

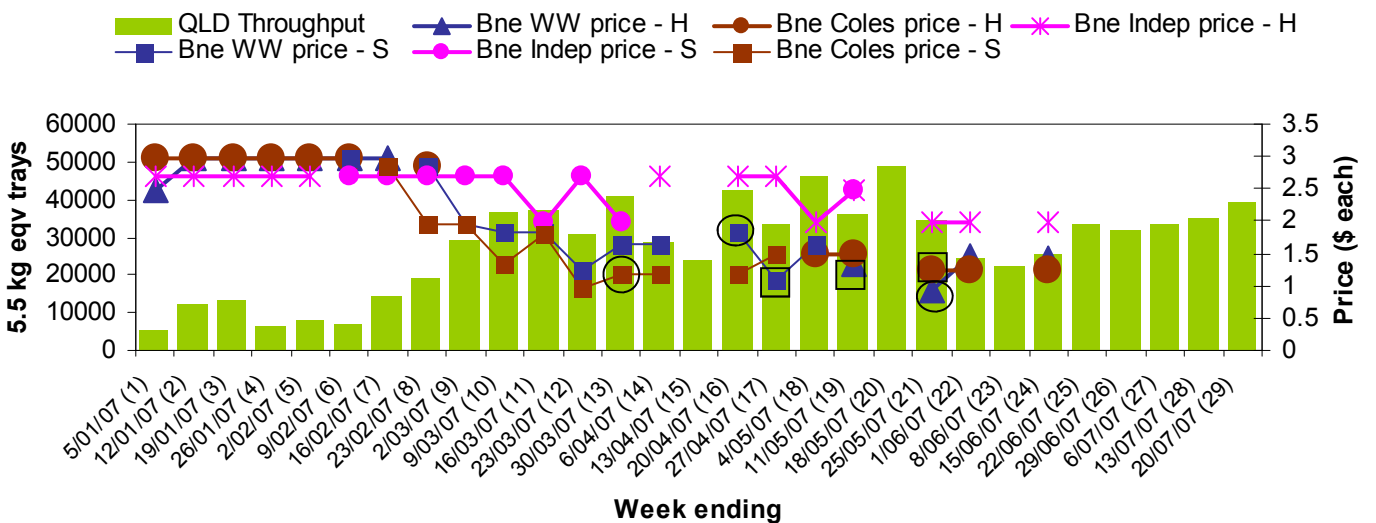
Sydney Avocado Retail Prices vs Dispatches - Destination state NSW



Melbourne Avocado Retail Prices vs Dispatches - Destination state Vic



Brisbane Avocado Retail Prices vs Dispatches - Destination state Qld



For more detailed reports please go to www.avocado.org.au and login to Infocado. Instructions on accessing reports are available in your Infocado Information kit under 'Retrieving information'

For further assistance please contact: Joanna Embry, Ph: 07 3391 2344, Email: infocado@avocado.org.au