



INFOCADO WEEKLY REPORT

12th - 18th July 2008 (Wk 29)

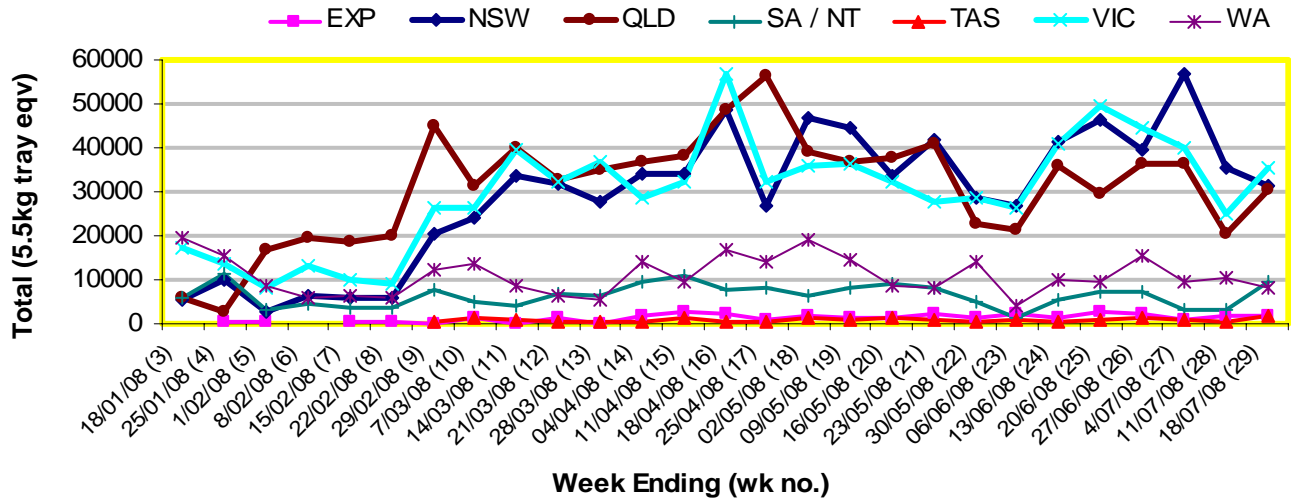
Green shading indicates dispatch data

Yellow shading indicates forecast data

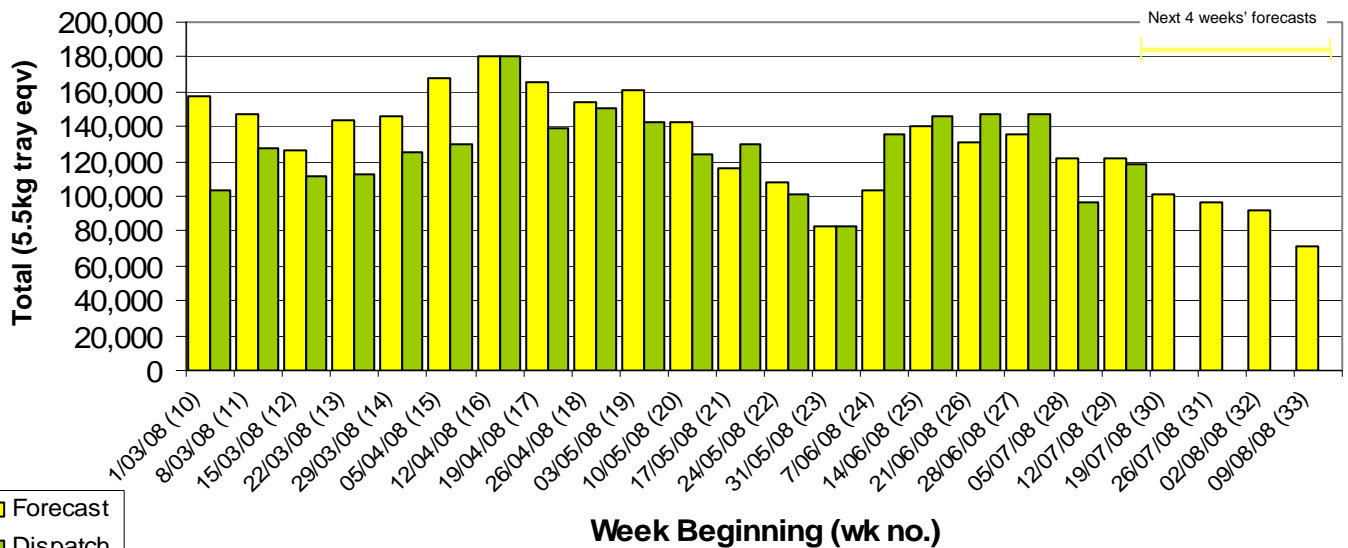
Industry Dispatches 12th – 18th July 2008 (Wk 29)

Dest. State	5.5kg	5.5kg	5.5kg	5.5kg	5.5kg	5.5kg	5.5kg	5.5kg	5.5kg	5.5kg	Bulk	P/PK	Oil	5.5Kg Eqv Trays All				
	<16	16	18	20	22	23	25	28	28+	Total	10Kg	Kg	Kg	Total				
EXP									660	1,135				1,795	85			1,950
NSW	189	1,145	12,515	4,251	1,375	2,932	1,281	741	265	24,694	3,003	6,381		31,314				
QLD	102	781	1,530	4,734	203	8,317	4,012	1,568	3	21,250	2,437	22,148	4,500	30,526				
SA / NT		5	32	2,368	199	1,767	2,971	367		7,709	831	2,160		9,613				
TAS								1,667		1,667				1,667				
VIC	720	3,763	11,062	3,797	1,014	4,402	3,123	400	124	28,405	3,159	8,210		35,642				
WA				3,264						3,264	1,704	9,954		8,172				
Total	1,011	5,694	25,139	18,414	2,791	17,418	13,054	3,736	1,527	88,784	11,219	48,853	4,500	118,882				

Throughput Australian avocados by destination State Throughput 1st January 2008 to date = 3,044,135 5.5kg tray eqv



Dispatch vs weekly forecast for Australian Avocados - all varieties and all packs (1st March 2008 to 15th August 2008)



Major Capital City Weather Report – week ahead

City	Tue	Wed	Thu	Fri	Public Hols	School Holidays
Brisbane	20°	19°	18°	19°	13th Aug - Royal Show	20th Sept - 5th Oct
Melbourne	12°	14°	14°	15°	4th Nov - Melb. Cup Day	20th Sept - 5th Oct
Perth	19°	20°	18°	18°	29th Sept - Queen's B/day	27th Sept - 13th Oct
Sydney	16°	16°	17°	16°	4th Aug - Bank Holiday	27th Sept - 13th Oct

Forecast Data (Week 29-33)

Variety	Trays - Total		Bulk	P/Pk	Oil	All - Total
	5.5Kg Eqv		10Kg	Kg	Kg	5.5Kg Eqv
Week 29 - begin 12/07/08						
Bacon			200			364
Fuerte	380		218			776
Hass	91,069	10,610	15,500	5,400		114,160
Lamb Hass	100					100
Reed	4,000					4,000
Sharwil	1,300	40	1,000			1,555
Wurtz	500	100				682
Week Total	97,349	11,168	16,500	5,400		121,636
Week 30 - begin 19/07/08						
Bacon			40			73
Fuerte	200	200				564
Hass	74,517	8,360	28,000			94,808
Reed	3,000					3,000
Sharwil	1,350	10	1,000			1,550
Wurtz	400	100				582
Week Total	79,467	8,710	29,000			100,576
Week 31 - begin 26/07/08						
Fuerte	80	170				389
Hass	72,591	8,075	10,600			89,200
Lamb Hass	100	50				191
Reed	5,000					5,000
Sharwil	1,150	20	1,000			1,368
Wurtz	150	10				168
Week Total	79,071	8,325	11,600			96,316
Week 32 - begin 02/08/08						
Bacon			40			73
Fuerte	80	238				513
Hass	69,455	7,215	10,700			84,518
Lamb Hass	100	50				191
Reed	5,000					5,000
Sharwil	1,120		1,000			1,302
Wurtz	800					800
Week Total	76,555	7,543	11,700			92,397
Week 33 - begin 09/08/08						
Bacon			40			73
Fuerte	80	130				316
Hass	53,530	5,340	10,700			65,184
Lamb Hass	100	50				191
Reed	5,000					5,000
Sharwil			1,000			182
Wurtz	800					800
Week Total	59,510	5,560	11,700			71,746

Dispatch Data (Week 29 - begin 12/07/08)

Variety	Trays	Bulk	P/Pk	Oil	5.5Kg Eqv
	5.5kg eqv	10Kg	Kg	Kg	Total Trays
Bacon		216			393
Fuerte	152	30			207
Hass	86,166	9,543	47,665	4,500	113,001
Lamb Hass	849				849
Pinkerton		156			284
Reed	864	1,056			2,784
Sharwil	357	195	1,188		928
Wurtz	393	23			435
Total	88,781	11,219	48,853	4,500	118,879

Week 29 contributors

Balmoral Orchard
 BT & RG Pegg
 Donovan Avocados
 G & J Krenske
 Green Nugget Orchards
 Mountain Fresh
 Natures Fruit Company
 One Harvest
 Simpsons Farms Pty Ltd
 Sunfresh
 Sunny Bluff Produce Pty Ltd
 Sunnyspot Packhouse PL
 Touchwood Farming
 Tropicado Avocados

Percentage dispatched by region (Based on seasonal forecast - 2008)

