



INFOCADO WEEKLY REPORT

19th - 25th July 2008 (Wk 30)

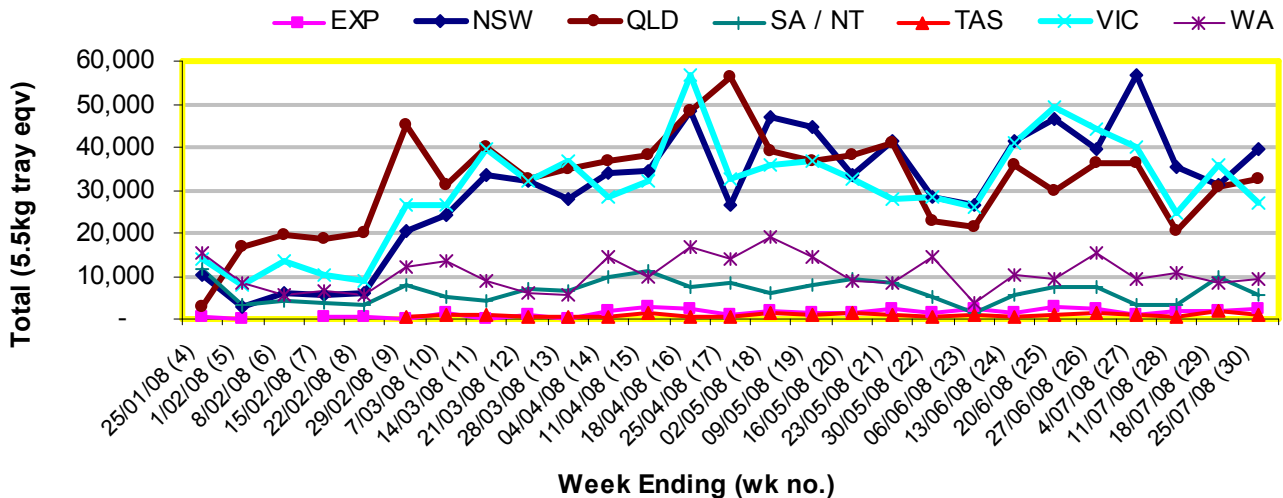
Green shading indicates dispatch data

Yellow shading indicates forecast data

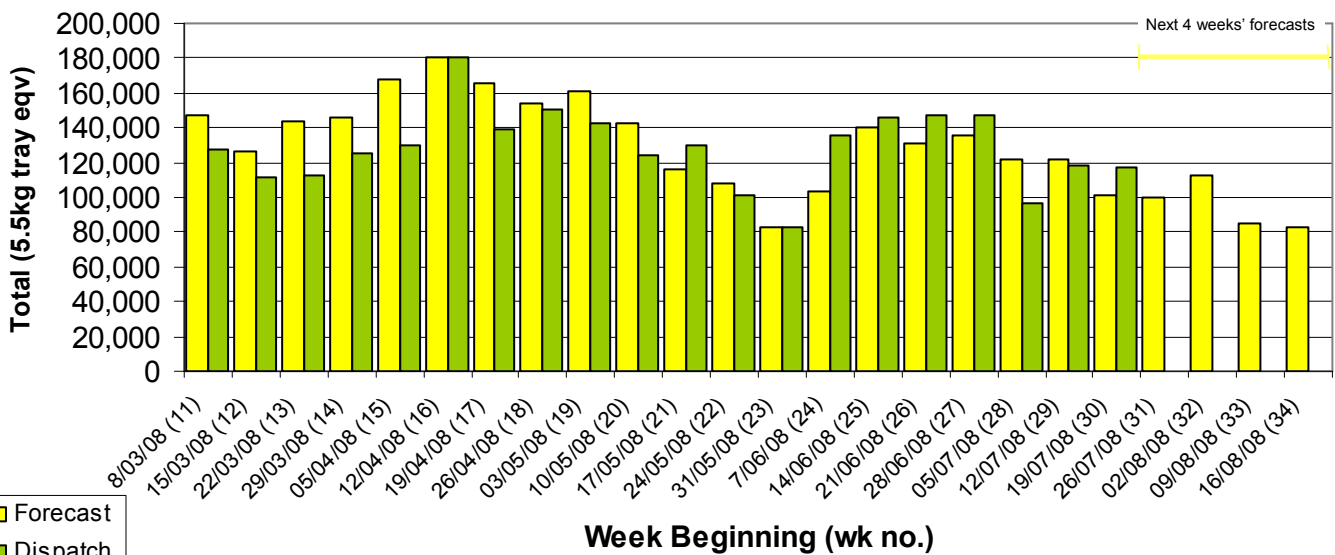
Industry Dispatches 19th – 25th July 2008 (Wk 30)

Dest. State	5.5kg	5.5kg	5.5kg	5.5kg	5.5kg	5.5kg	5.5kg	5.5kg	5.5kg	5.5kg	Bulk	P/PK	Oil	5.5Kg Eqv Trays All
	<16	16	18	20	22	23	25	28	28+	Total	10Kg	Kg	Kg	Total
EXP								1,168	1,052	2,220	105			2,411
NSW	811	4,008	6,238	7,635	1,462	3,004	2,999	1,508	435	28,100	2,690	35,433		39,433
QLD	2,722	3,716	1,288	2,769	454	6,301	3,640	1,886	373	23,149	3,490	15,978	200	32,435
SA / NT	222	260	54	104	56	1,214	1,410	298	5	3,623	816	1,440		5,369
TAS							579			579	92			746
VIC	2,041	3,839	6,211	2,957	519	3,175	1,312	643	97	20,794	2,294	10,233		26,826
WA		3	33	5,011	190	546	600	144		6,527	1,260	3,906		9,528
Total	5,796	11,826	13,824	18,476	2,681	14,240	10,540	5,647	1,962	84,992	10,747	66,990	200	116,748

Throughput Australian avocados by destination State Throughput 1st January 2008 to date = 3,160,884 5.5kg tray eqv



Dispatch vs weekly forecast for Australian Avocados - all varieties and all packs (8th March 2008 to 22nd August 2008)



Major Capital City Weather Report – week ahead

City	Tue	Wed	Thu	Fri	Public Hols	School Holidays
Brisbane	18°	17°	20°	25°	13th Aug - Royal Show	20th Sept - 5th Oct
Melbourne	14°	15°	15°	14°	4th Nov - Melb. Cup Day	20th Sept - 5th Oct
Perth	18°	17°	16°	17°	29th Sept - Queen's B/day	27th Sept - 13th Oct
Sydney	14°	17°	18°	20°	4th Aug - Bank Holiday	27th Sept - 13th Oct

Forecast Data (Week 30-34)

Variety	Trays - Total	Bulk	P/Pk	Other	All - Total
	5.5Kg Eqv	10Kg	Kg	Kg	5.5Kg Eqv
Week 30 - begin 19/07/08					
Bacon		40			73
Fuerte	200	200			564
Hass	74,517	8,360	28,000		94,808
Reed	3,000				3,000
Sharwil	1,350	10	1,000		1,550
Wurtz	400	100			582
Week Total	79,467	8,710	29,000		100,576
Week 31 - begin 26/07/08					
Fuerte	240	90			404
Hass	76,517	7,900	11,000		92,881
Reed	5,000				5,000
Sharwil	1,300	20	1,000		1,518
Wurtz	150	10			168
Week Total	83,207	8,020	12,000	0	99,971
Week 32 - begin 02/08/08					
Bacon		40			73
Fuerte	280	238			713
Hass	86,438	8,815	11,000		104,465
Lamb Hass	100	50			191
Reed	5,000				5,000
Sharwil	1,230	30	2,000	50	1,658
Wurtz	900				900
Week Total	93,948	9,173	13,000	50	112,999
Week 33 - begin 09/08/08					
Bacon		80			145
Fuerte	280	130			516
Hass	64,567	5,915	11,000		77,322
Lamb Hass	100	50			191
Reed	5,000				5,000
Sharwil	1,120		2,000		1,484
Wurtz	800				800
Week Total	71,867	6,175	13,000	0	85,458
Week 34 - begin 16/08/08					
Bacon		40			73
Fuerte	200	40			273
Hass	63,945	5,835	11,000	50	76,563
Lamb Hass	100	50			191
Reed	5,000				5,000
Sharwil	120		2,000		484
Week Total	69,365	5,965	13,000	50	82,583

Dispatch Data (Week 30 - begin 19/07/08)

Variety	Trays	Bulk	P/Pk	Other	5.5Kg Eqv
	5.5kg eqv	10Kg	Kg	Kg	Total Trays
Bacon		92			167
Fuerte	160	136			407
Hass	75,514	8,682	63,024	200	102,794
Lamb Hass	1,589	397			2,311
Reed	6,176	1,248			8,445
Sharwil	1,326	183	3,966		2,380
Wurtz	228	9			244
Total	84,993	10,747	66,990	200	116,749

Week 30 contributors

Balmoral Orchard
 BT & RG Pegg
 C F Fechner
 Coastal Avocados
 DJ & BD Tottenham
 Donovan Avocados
 G & C Christensen
 G & J Krenske
 Googa Farms
 Green Nugget Orchards
 I & A Tolson
 Jirel Holdings
 Midcoast Avocados
 Mountain Fresh
 Mt Binga Orchards Pty Ltd
 Natures Fruit Company
 One Harvest
 RM & KL Cornwall
 Rob Farnsworth Pty Ltd
 Simpsons Farms Pty Ltd
 Summerland House With No Steps
 Sunfresh
 Sunnyspot Packhouse PL
 Tenterfield Fruit Packers
 Touchwood Farming

Percentage dispatched by region (Based on seasonal forecast - 2008)

