



INFOCADO WEEKLY REPORT

26th July - 1st August 2008 (Wk 31)

Green shading indicates dispatch data

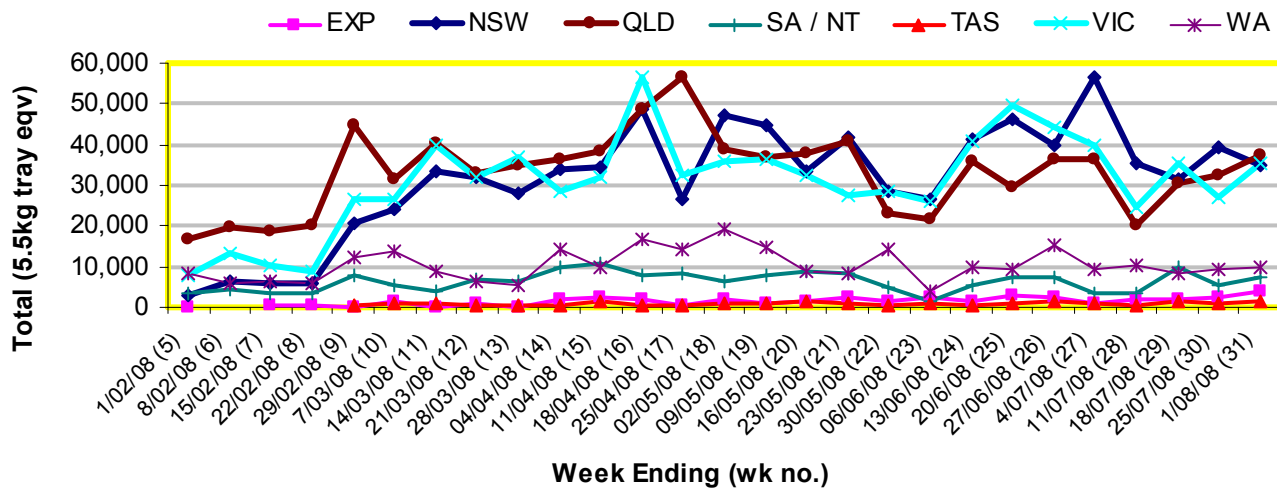
Yellow shading indicates forecast data

Industry Dispatches 26th July – 1st August 2008 (Wk 31)

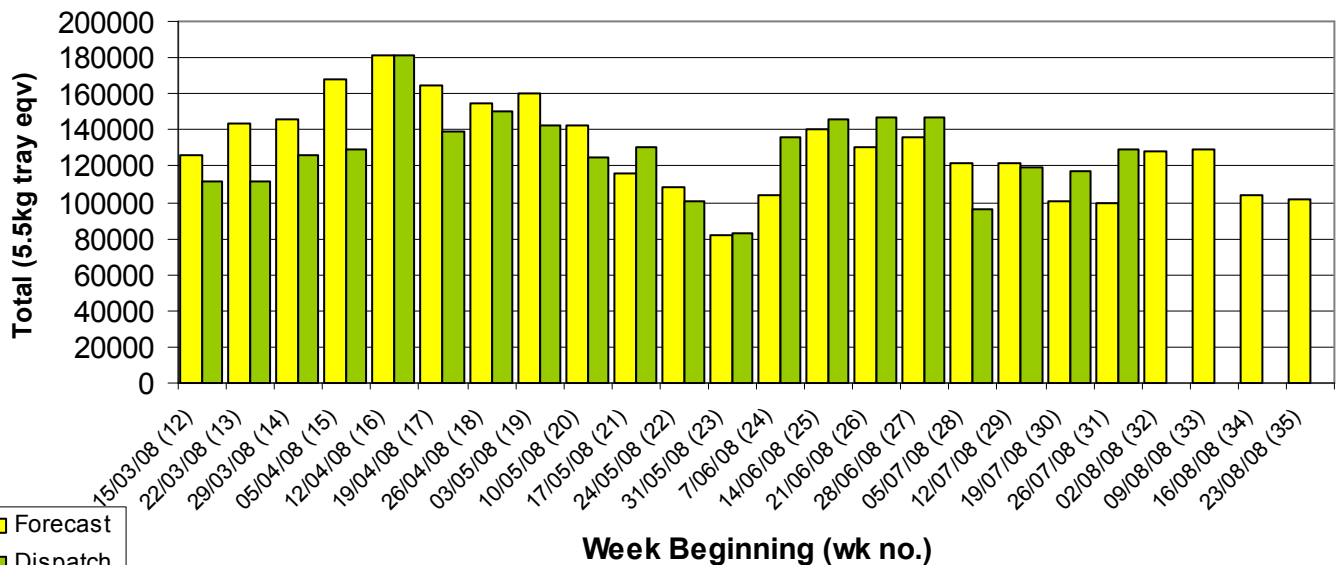
Dest. State	5.5kg		5.5kg		5.5kg		5.5kg		5.5kg		Bulk	P/PK	Oil	5.5Kg Eqv Trays All	
	<16	16	18	20	22	23	25	28	28+	5.5kg Total					10Kg
EXP						22	35	1,516	1,861		3,434	278			3,939
NSW	466	1,867	10,175	4,453	2,131	3,629	3,212	1,694	373	28,000	3,406	3,124	200	34,797	
QLD	2,770	1,788	1,332	9,990	239	9,652	4,728	1,661	259	32,419	1,838	6,670	1,000	37,156	
SA / NT	120	20	320	819	255	1,185	2,693	840	72	6,324	460	240		7,204	
TAS							1,335			1,335				1,335	
VIC	670	2,559	8,127	4,837	1,241	3,307	1,609	980	86	23,416	3,109	34,608		35,361	
WA	111	41	212	3,471	222	286	476	252		5,071	2,418	1,136		9,674	
Total	4,137	6,275	20,166	23,570	4,088	18,081	14,088	6,943	2,651	99,999	11,509	45,778	1,200	129,465	

Throughput Australian avocados by destination State

Throughput 1st January 2008 to date = 3,290,351 5.5kg tray eqv



Dispatch vs weekly forecast for Australian Avocados - all varieties and all packs (15th March 2008 to 29th August 2008)



Major Capital City Weather Report – week ahead

City	Tue	Wed	Thu	Fri	Public Hols	School Holidays
Brisbane	21	20°	20°	20°	13th Aug - Royal Show	20th Sept - 5th Oct
Melbourne	14°	14°	14°	14°	4th Nov - Melb. Cup Day	20th Sept - 5th Oct
Perth	18°	18°	17°	16°	29th Sept - Queen's B/day	27th Sept - 13th Oct
Sydney	16°	16°	16°	19°	6th Oct - Labour Day	27th Sept - 13th Oct

Forecast Data (Week 31-35)

Variety	Trays - Total	Bulk	P/Pk	Other	All - Total
	5.5Kg Eqv	10Kg	Kg	Kg	5.5Kg Eqv
Week 31 - begin 26/07/08					
Bacon	240	90			404
Hass	76,517	7,900	11,000		92,881
Reed	5,000				5,000
Sharwil	1,300	20	1,000		1,518
Wurtz	150	10			168
Week Total	83,207	8,020	12,000	0	99,971
Week 32 - begin 02/08/08					
Bacon		40			73
Fuerte	620	470			1,475
Gwen	100				100
Hass	101,426	8,785	11,000		119,399
Reed	5,000				5,000
Sharwil	1,230	30	2,000	50	1,658
Wurtz	100				100
Week Total	108,476	9,325	13,000	50	127,804
Week 33 - begin 09/08/08					
Bacon		80			145
Fuerte	580	280			1,089
Hass	99,574	9,935	11,000		119,638
Lamb Hass	100	50			191
Reed	5,000				5,000
Sharwil	1,620	70	2,000		2,111
Wurtz	900				900
Week Total	107,774	10,415	13,000	0	129,074
Week 34 - begin 16/08/08					
Bacon		40			73
Fuerte	560	210			942
Hass	82,042	6,885	11,000	50	96,569
Lamb Hass	100	50			191
Reed	5,000				5,000
Sharwil	120	40	2,000		557
Week Total	87,822	7,225	13,000	50	103,331
Week 35 - begin 23/08/08					
Fuerte	60	20			96
Hass	81,830	6,770	12,000		96,321
Lamb Hass	100	50			191
Reed	5,000				5,000
Sharwil			2,000		364
Week Total	86,990	6,840	14,000	0	101,971

Dispatch Data (Week 31 - begin 26/07/08)

Variety	Trays	Bulk	P/Pk	Other	5.5Kg Eqv
	5.5kg eqv	10Kg	Kg	Kg	Total Trays
Fuerte	43	128			276
Gwen	134	11			154
Hass	91,083	9,301	44,176	1,200	116,244
Lamb Hass	2,104	482			2,980
Reed	4,870	1,250			7,143
Sharwil	1,648	332	1,602		2,543
Wurtz	118	5			127
Total	100,000	11,509	45,778	1,200	129,466

Week 31 contributors

Avowest
 Balmoral Orchard
 BT & RG Pegg
 Coastal Avocados
 Donovan Avocados
 G & C Christensen
 G & J Krenske
 Green Nugget Orchards
 I & A Tolson
 Jirel Holdings
 Midcoast Avocados
 Mountain Fresh
 Mt Binga Orchards Pty Ltd
 Natures Fruit Company
 One Harvest
 Simpsons Farms Pty Ltd
 Summerland House With No Steps
 Sunfresh
 Sunnyspot Packhouse PL
 Tenterfield Fruit Packers
 Touchwood Farming

Percentage dispatched by region (Based on seasonal forecast - 2008)

