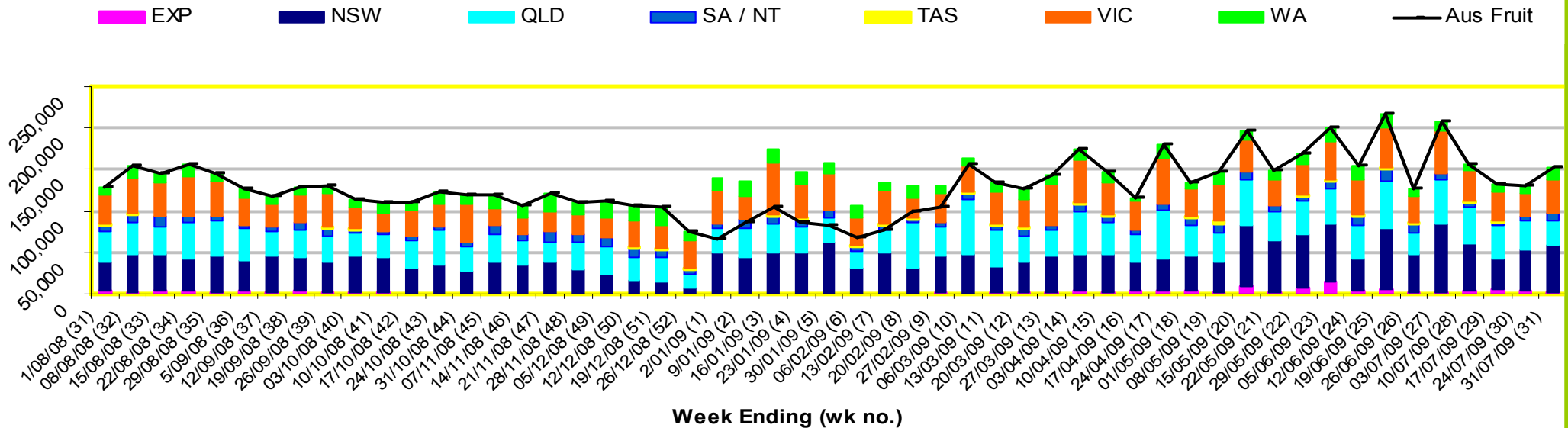


INFOCADO WEEKLY REPORT: 25th - 31st July 2009 (Wk 31)

Industry Dispatches 25th - 31st July 2009 (Wk 31)

Dest. State	5.5kg									5.5kg Total	Bulk 10Kg	P/PK Kg	Proc Kg	5.5Kg Eqv Trays All Total
	<16	16	18	20	22	23	25	28	28+					
EXP								1,593	663	2,256	208			2,634
NSW	713	893	7,245	8,148	2,597	6,913	4,388	2,151	322	33,370	11,230	10,130		55,630
QLD		6	313	3,126	108	8,410	4,301	1,803	449	18,516	5,162	12,430	2,400	30,597
SA / NT	3	84	49	596	60	481	5,407	409		7,089	942			8,802
TAS							504			504		444		585
VIC	2	1,893	8,688	10,532	1,430	2,337	2,397	1,278	139	28,696	5,300	6,084		39,438
WA	4	21	55	2,454	153	2,212	1,712	287	1	6,899	4,042			14,248
Total	722	2,897	16,350	24,856	4,348	20,353	18,709	7,521	1,574	97,330	26,884	29,088	2,400	151,935

Throughput Australian & NZ avocados by destination State Throughput 1st January 2009 to date = 4,727,748 5.5kg tray eqv

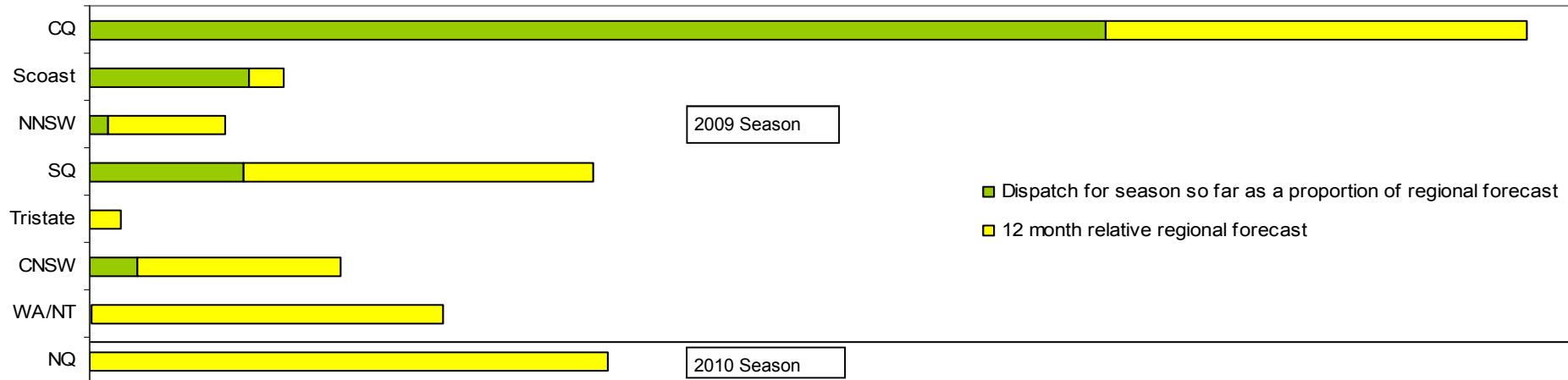


Comments from the CEO

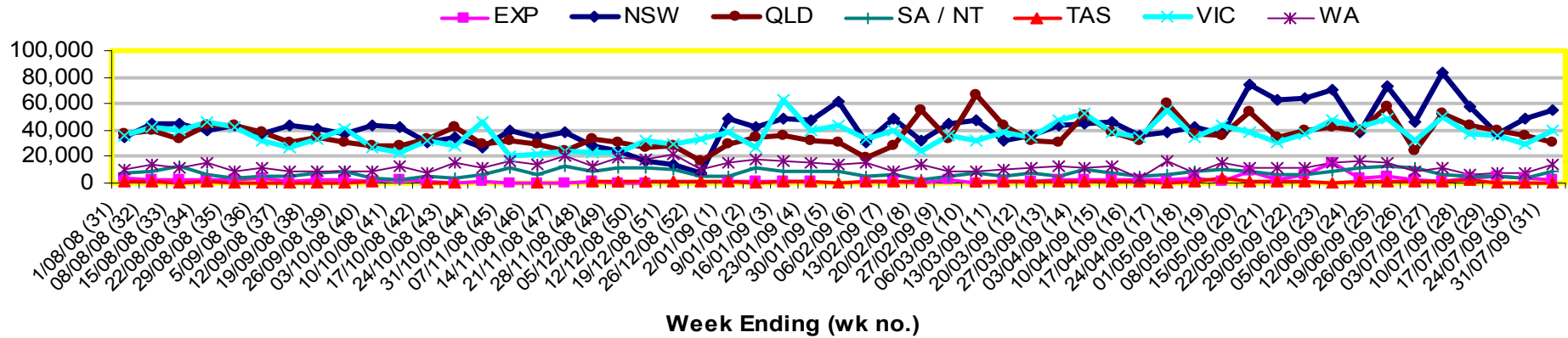
- There is not yet a definitive date for New Zealand avocados to come into the Australian market. Once they reach their export requirement of 24% DM they can be shipped at any time.
- Australian regional dry matter results have been included at the back of this week's report.



Percentage dispatched by region 2009 Season (Based on seasonal forecast - 2009)



Throughput Australian & NZ avocados by destination State
Throughput 1st January 2009 to date = 4,727,748 5.5kg tray eqv



Week 31 contributors - Packhouses

Balmoral Orchard
 Donovan Family Investment Trust
 G & J Krenske
 Googa Farms
 Green Nugget Orchards
 Mount Hallen Avocados
 Mountain Fresh
 Natures Fruit Company

One Harvest
 Simpson Farms Pty Ltd
 Sunfresh
 Sunny Bluff Produce Pty Ltd
 Sunnyspot Packhouse PL
 SuperPak
 The I & R Family Trust
 Touchwood Farming

Week 31 contributors - Wholesalers

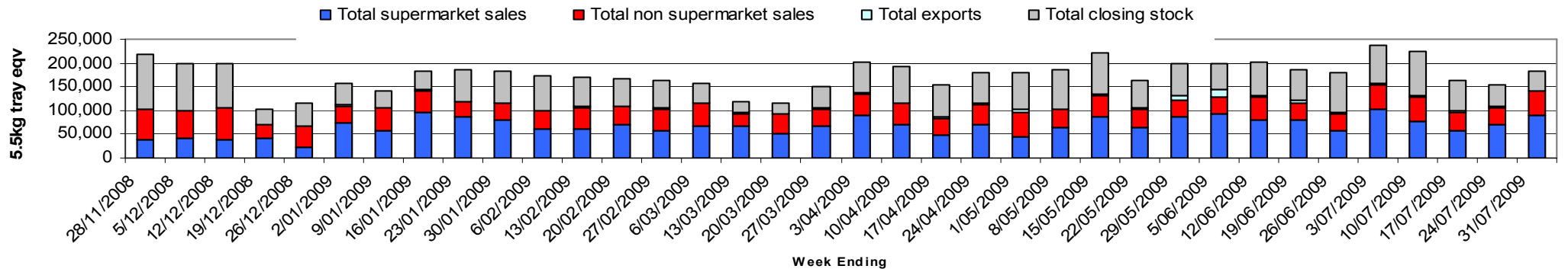
Costa Exchange Trading (Brisbane)
 Dykes Bros (Melbourne)
 Etherington (Perth)
 Kelly's (Melbourne)
 Mercer Mooney (Perth)
 Murray Bros (Brisbane)

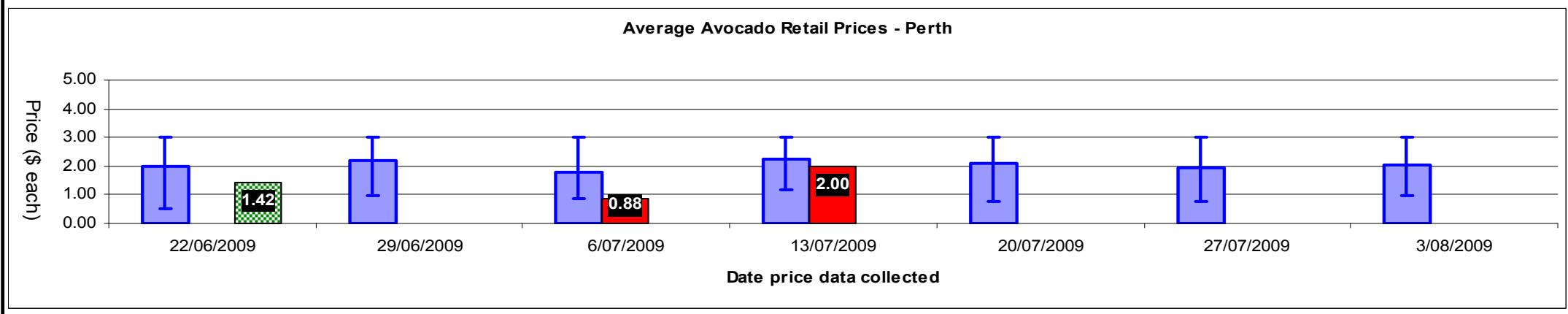
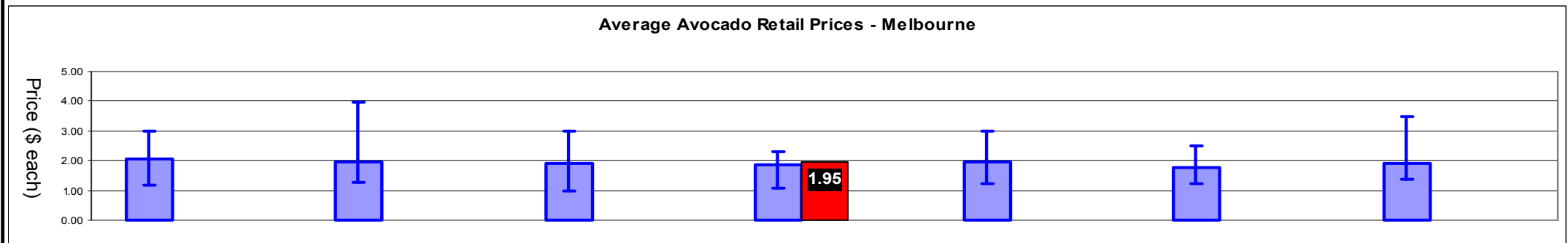
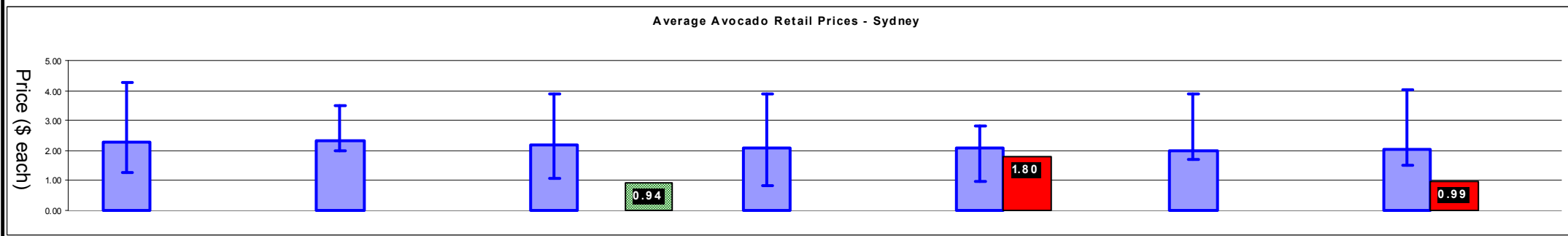
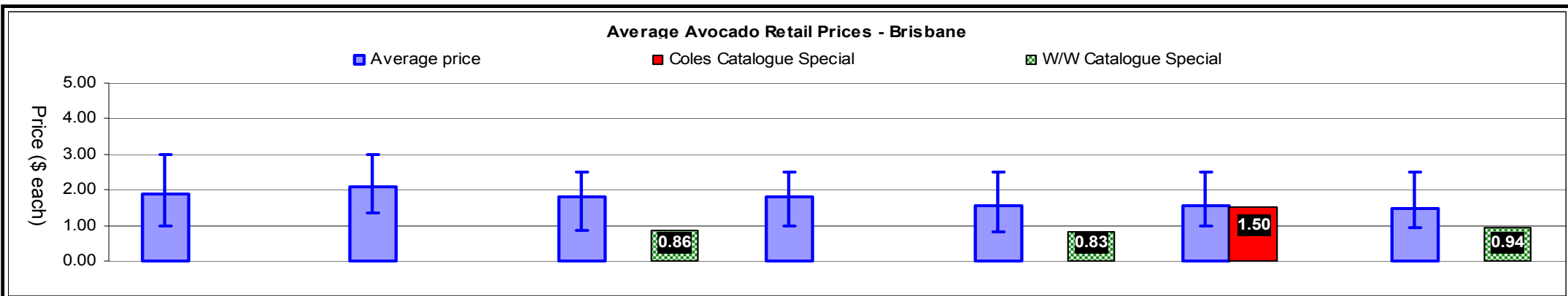
Romeos Marketing (Brisbane)
 Sculli & Co Pty Ltd (Melbourne)
 The La Manna Group (Adelaide)
 The La Manna Group (Brisbane)
 The La Manna Group (Melbourne)
 United Fresh (Adelaide)

Sales Report including Direct Sales from Packhouses, Wholesale Sales and Stock on Hand at Wholesale Level

	Trays 5.5kg eqv (incl. Mod6 & P84)				Bulk 10kg Cartons				Pre-Pack Kg					Total (5.5kg eqv)				
	Hass	Shepard	Other	Total	Hass	Shepard	Other	Total	5.5kg eqv	Hass	Shepard	Other	Total	5.5kg eqv	Hass	Shepard	Other	Total
NSW																		
Total supermarket sales																		
Total non supermarket sales	# Data set not included because not enough NSW wholesalers contributed data this week																	
Total exports																		
Total sales																		
Total stock on hand																		
QLD																		
Total supermarket sales	21,797			21,797	1,889			1,889	3,435	21,725				21,725	3,950	29,181		29,181
Total non supermarket sales	17,095		312	17,407	2,252		48	2,300	4,182							21,189	399	21,589
Total exports	2,177			2,177	208			208	378							2,555		2,555
Total sales	41,069		312	41,381	4,349		48	4,397	7,995	21,725				21,725	3,950	52,926	399	53,325
Total stock on hand	20,694		804	21,498	1,565			1,565	2,845	1,321				1,321	240	23,780	804	24,584
SA & TAS																		
Total supermarket sales																		
Total non supermarket sales	# Full data set not included because not enough SA/TAS wholesalers contributed data this week																	
Total exports																		
Total sales	8,975			8,975	872		11	883	1,605	444				444	81	10,641	20	10,661
Total stock on hand #																		
VIC																		
Total supermarket sales	19,023			19,023	1,825			1,825	3,318	6,084				6,084	1,106	23,448		23,448
Total non supermarket sales	5,998		2,963	8,961	3,079		755	3,834	6,971							11,596	4,336	15,932
Total exports																		
Total sales	25,021		2,963	27,984	4,904		755	5,659	10,289	6,084				6,084	1,106	35,043	4,336	39,379
Total stock on hand	3,478		3,913	7,391	718		2,004	2,722	4,949							4,783	7,557	12,340
WA																		
Total supermarket sales																		
Total non supermarket sales	# Full data set not included because not enough WA wholesalers contributed data this week																	
Total exports																		
Total sales	8,640		239	8,879	4,101		102	4,203	7,642							16,096	424	16,520
Total stock on hand #																		
TOTAL																		
Total supermarket sales	68,286			68,286	8,393			8,393	15,260	36,971				36,971	6,722	90,268		90,268
Total non supermarket sales	29,248		3,514	32,762	8,277		916	9,193	16,715							44,297	5,180	49,477
Total exports	2,256			2,256	208			208	378							2,634		2,634
Total sales	99,790		3,514	103,304	16,878		916	17,794	32,353	36,971				36,971	6,722	137,200	5,180	142,379
Total stock on hand	27,759		4,942	32,701	2,545		2,101	4,646	8,447	1,321				1,321	240	32,627	8,762	41,389

Weekly National Sales



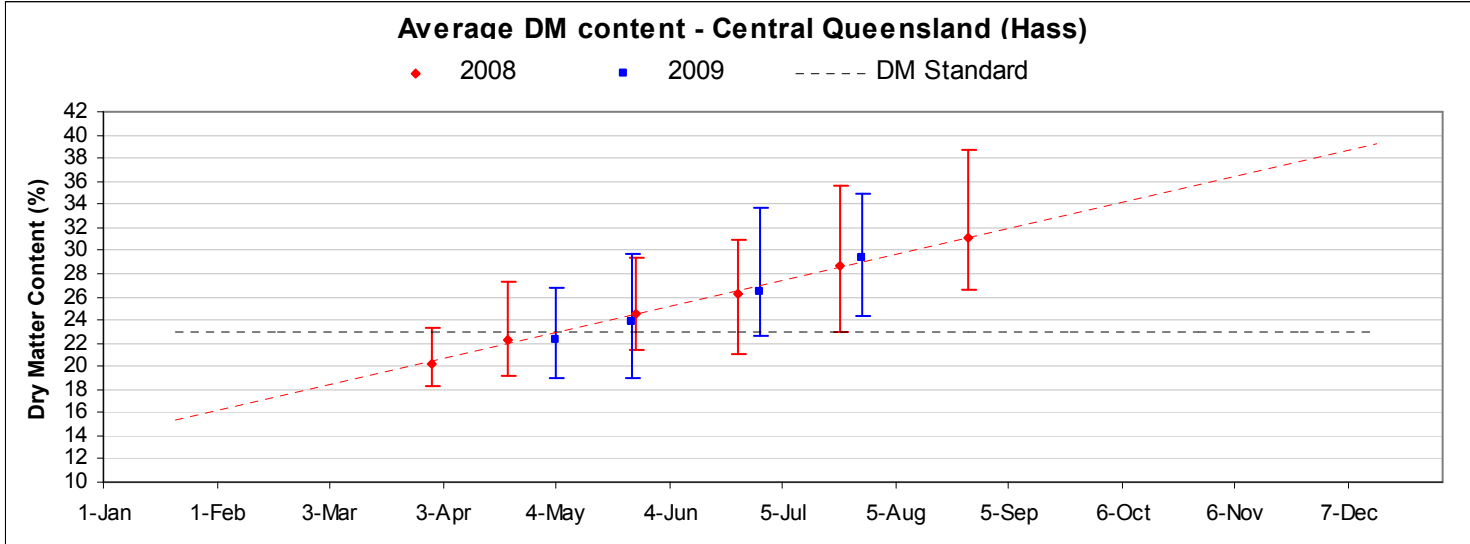
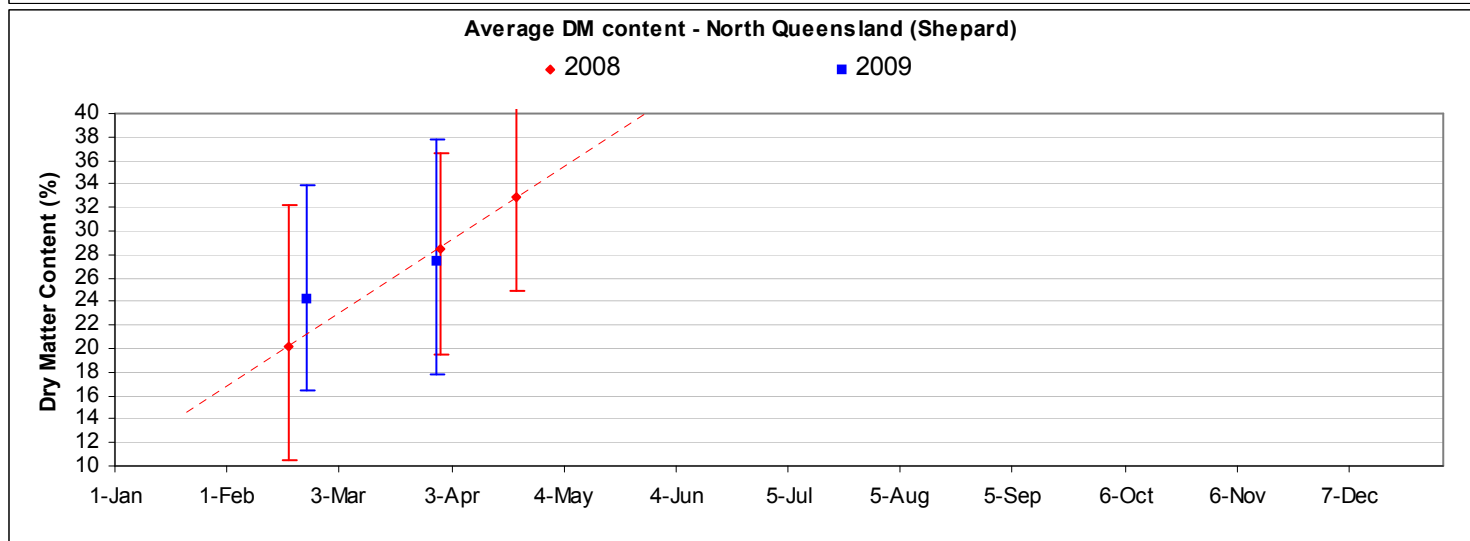
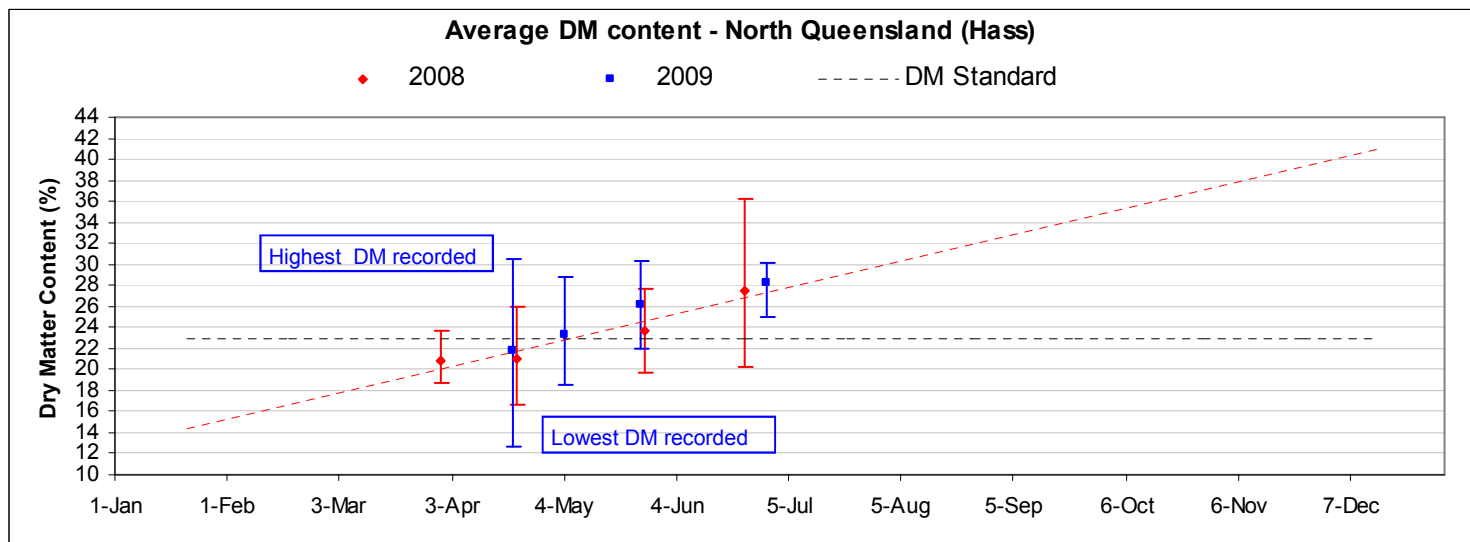




Avocado DM Content Report

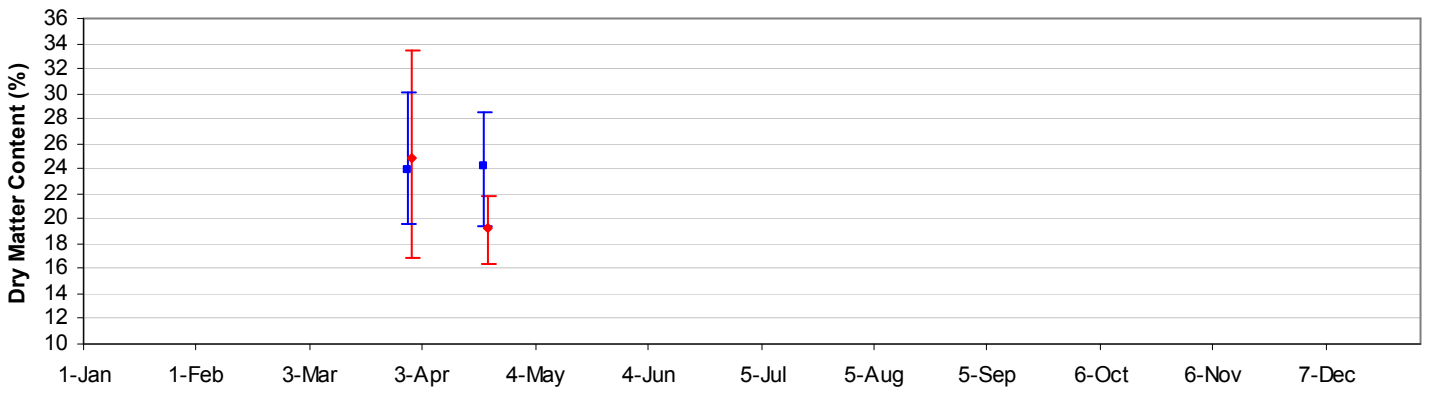
Fruit collected 27th July 2009

Dry Matter Intervals	Proportion of Fruit tested for each Dry matter interval 27th July 2009									
	NQ		CQ		SC	SQ	NNSW	CNSW	Tri	WA
	Hass	Shepard	Hass	Shepard	Hass	Hass	Hass	Hass	Hass	Hass
<=18%			0%		0%	0%	0%	3%	0%	
18.1%-20.9%			0%		0%	0%	0%	0%	0%	
21%-22.9%			0%		0%	5%	0%	0%	0%	
23%-28%			28%		20%	55%	60%	43%	100%	
27.1%-40%			73%		80%	40%	40%	55%	0%	
>40%			0%		0%	0%	0%	0%	0%	



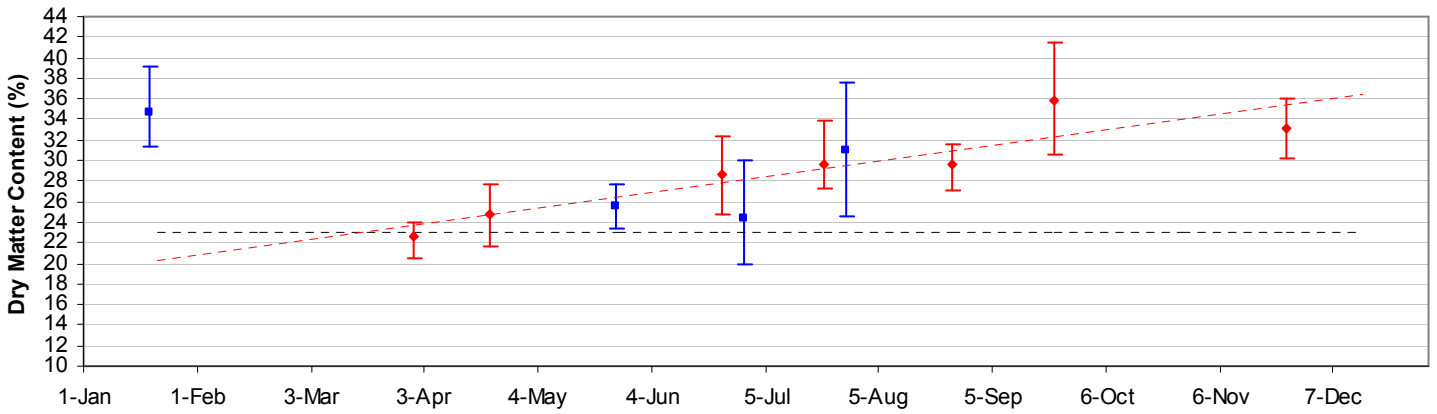
Average DM content - Central Queensland (Shepard)

◆ 2008 ■ 2009



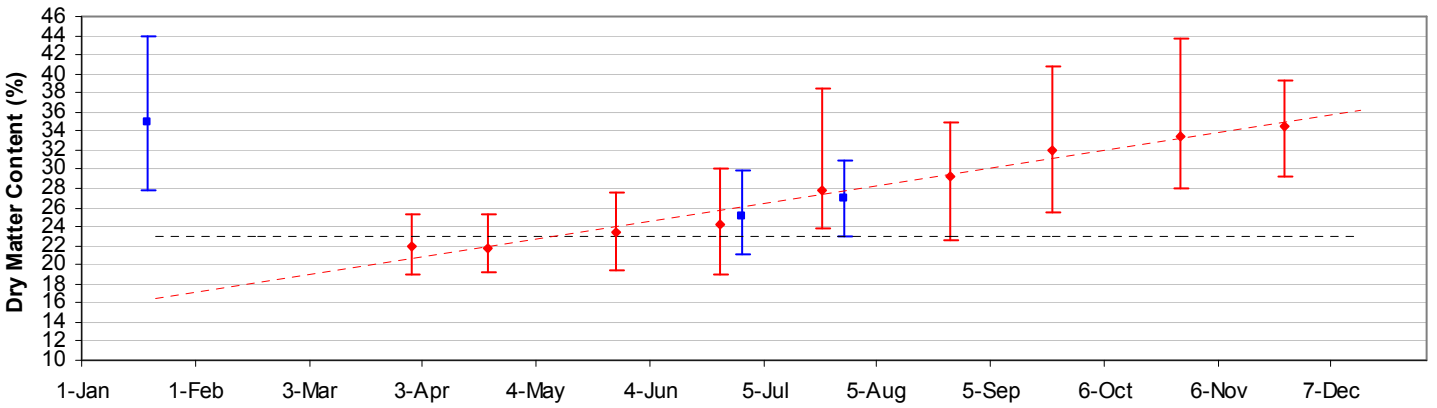
Average DM content - Sunshine Coast (Hass)

◆ 2008 ■ 2009 - - - - - DM Standard



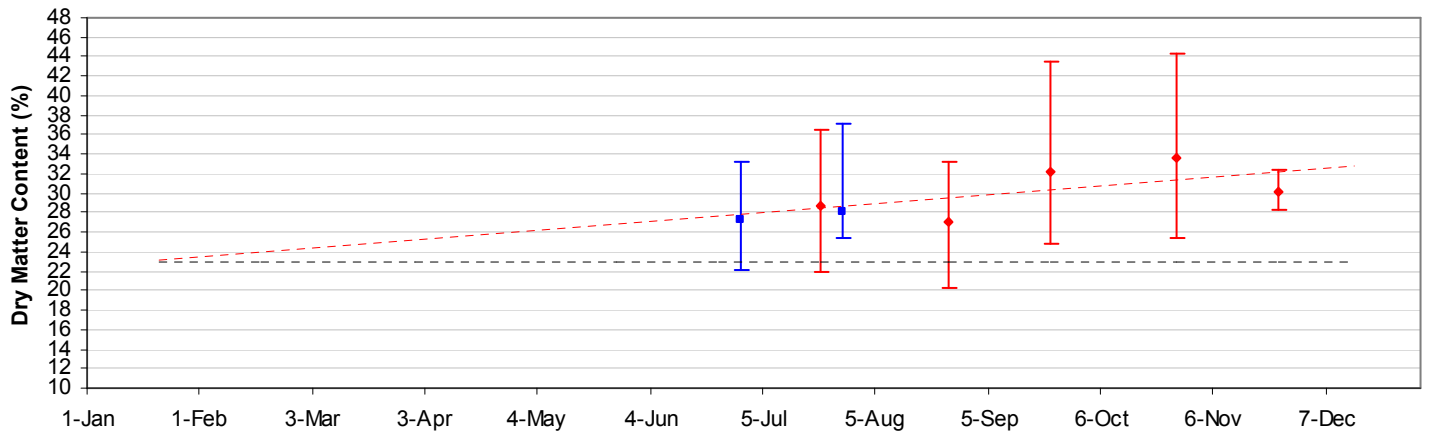
Average DM content - South Qld (Hass)

◆ 2008 ■ 2009 - - - - - DM Standard



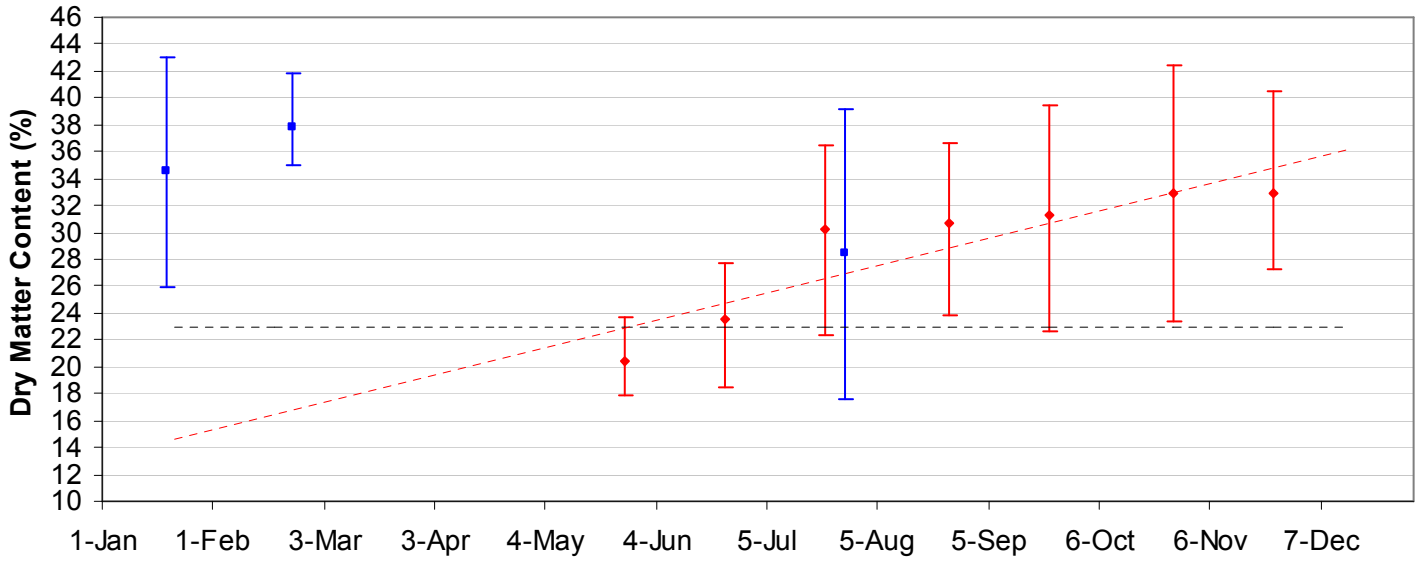
Average DM content - Northern NSW (Hass)

◆ 2008 ■ 2009 - - - - - DM Standard



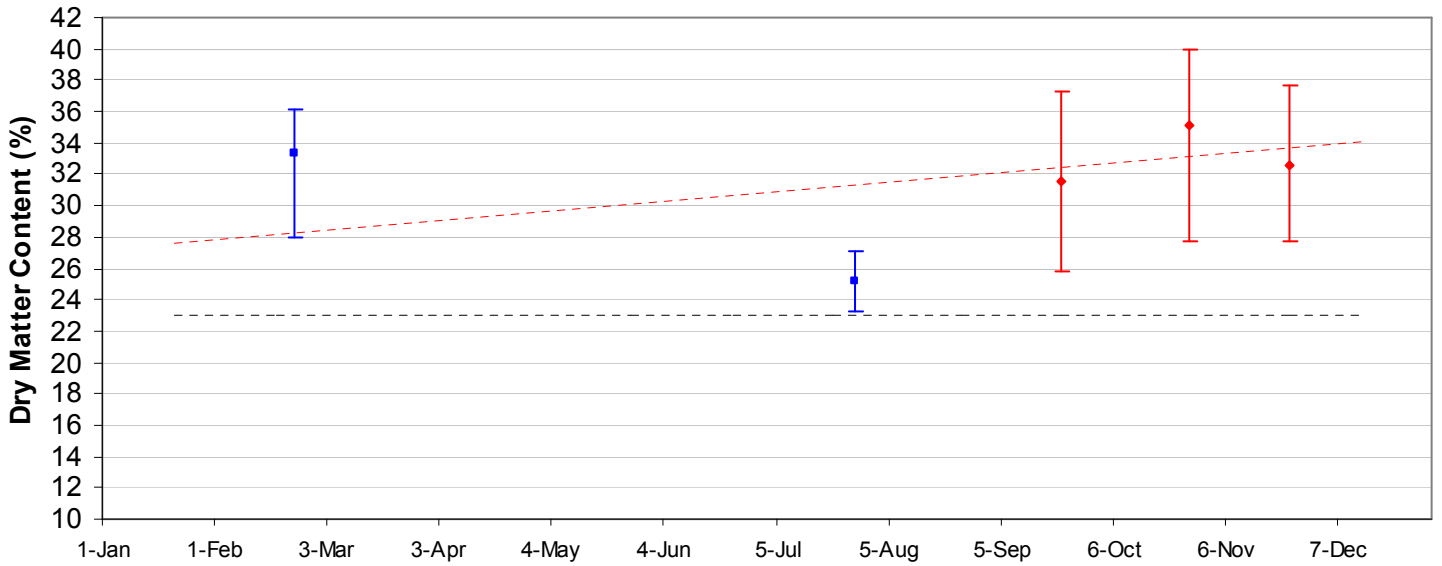
Average DM content - Central NSW (Hass)

◆ 2008 ■ 2009 - - - - DM Standard



Average DM content - Tristate (Hass)

◆ 2008 ■ 2009 - - - - DM Standard



Average DM content - WA (Hass)

◆ 2008 ■ 2009 - - - - DM Standard

