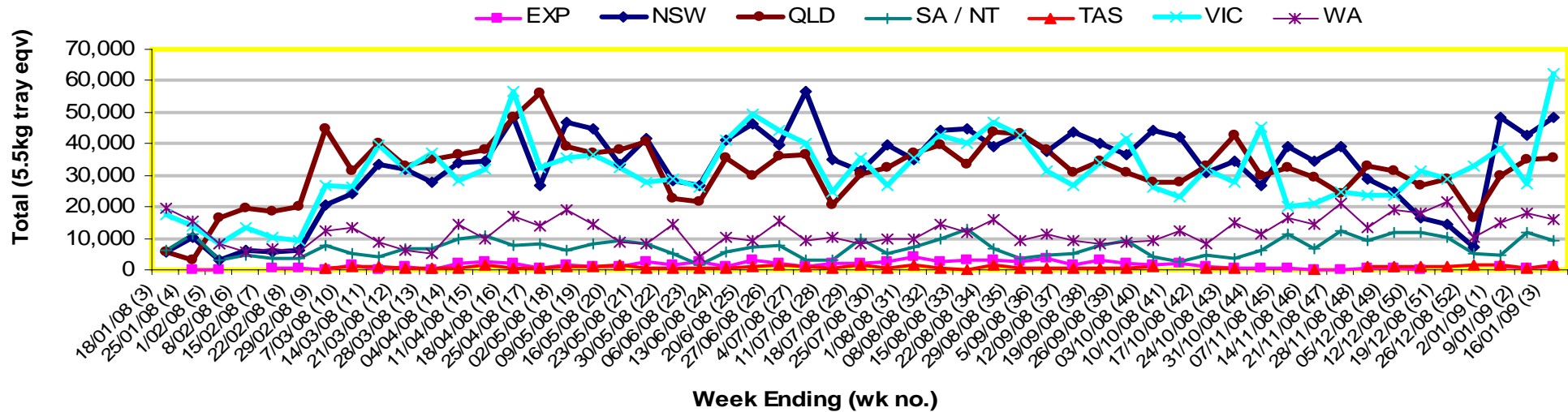


INFOCADO WEEKLY REPORT: 10th - 16th January 2009 (Wk 3)

Industry Dispatches 10th - 16th January 2009 (Wk 3)

Dest. State	5.5kg									5.5kg Total	Bulk 10Kg	P/PK Kg	Other Kg	5.5Kg Eqv Trays Total
	<16	16	18	20	22	23	25	28	28+					
EXP									660	660	96			835
NSW	15	3,333	7,212	10,535		8,609	7,083	4,146	2,783	43,716	2,583			48,412
QLD	657	2,325	4,855	6,871	307	6,872	5,739	2,759	1,911	32,296	1,060	5,574	1,200	35,454
SA / NT	154	149	423	697		745	4,258	885		7,311	592	6,000		9,478
TAS							1,484			1,484				1,484
VIC	1,045	3,128	16,337	21,760		6,766	4,912	2,305	1,387	57,640	2,623			62,409
WA	2	260	699	1,678		4,277	5,039	1,638	12	13,605	773	6,000		16,101
Total	1,873	9,195	29,526	41,541	307	27,269	28,515	12,393	6,093	156,712	7,727	17,574	1,200	174,174

Throughput Australian & NZ avocados by destination State Throughput 1st January 2009 to date = 448, 994 5.5kg tray eqv



Comments from the CEO

- Dispatches were up on forecasts this week, making up for last weeks reduction.
- Increases in dispatches seem to correspond to an increase in the overall market returns.
- The 2009 Seasonal Forecast is due out this week.



Forecast Data (Week 3 - 7)

Variety	Trays - Total	Bulk	P/Pk	All - Total
	5.5Kg Eqv	10Kg	Kg	5.5Kg Eqv
Week 3—begin 10/01/09				
Gwen	1,000	110		1,200
Hass	132,912	7,511	7,500	147,932
Lamb Hass	600	40		673
Reed	520	30		575
Wurtz	200	10		218
Week Total	135,232	7,701	7,500	150,598
Week 4—begin 17/01/09				
Gwen	1,350	170		1,659
Hass	130,000	6,308	10,290	143,340
Lamb Hass	760	40		833
Reed	190	20		226
Shepard	6,000	500		6,909
Wurtz	20			20
Week Total	138,320	7,038	10,290	152,987
Week 5—begin 24/01/09				
Gwen	1,000	90		1,164
Hass	124,964	5,831	9,290	137,255
Lamb Hass	750	40		823
Reed	950	50		1,041
Shepard	6,709	500		7,618
Week Total	134,373	6,511	9,290	147,900
Week 6—begin 31/01/09				
Gwen	900	90		1,064
Hass	112,947	4,168	9,290	122,214
Lamb Hass	750	40		823
Reed	800	20		836
Shepard	7,945	1,000		9,763
Week Total	123,342	5,318	9,290	134,700
Week 7—begin 7/02/09				
Hass	97,870	3,768	9,290	106,410
Lamb Hass	600	40		673
Reed	7,945		4,000	8,672
Week Total	106,416	3,808	13,290	115,756

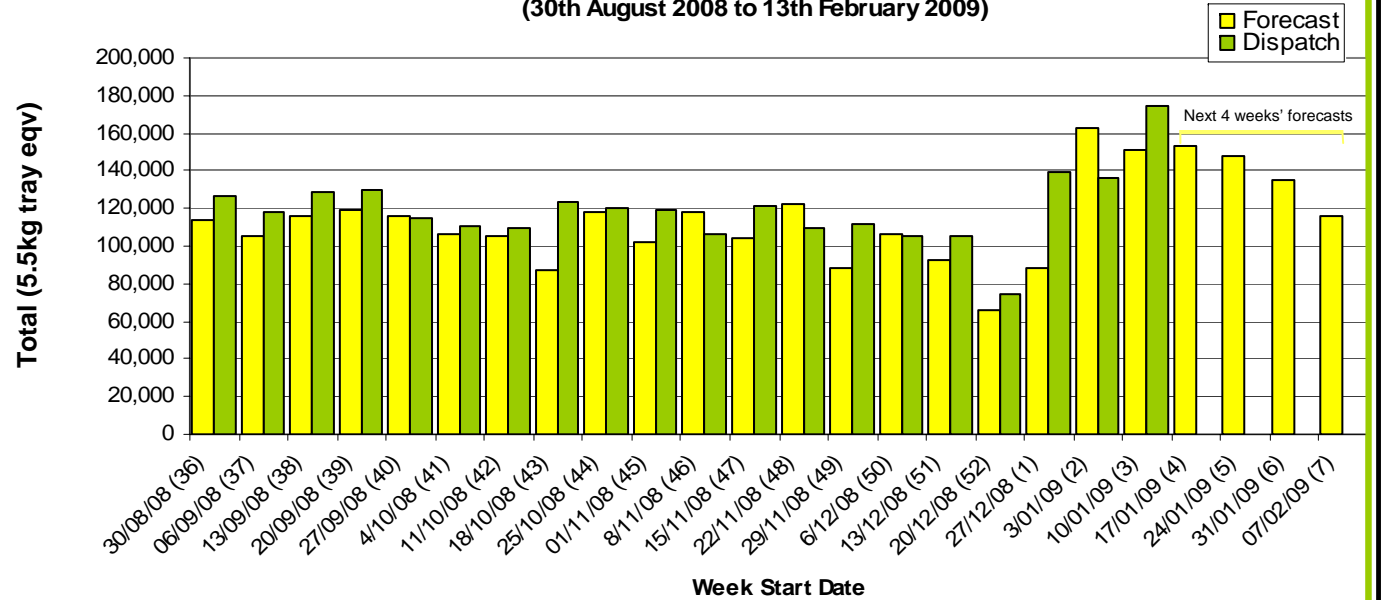
Green shading indicates dispatch data

Yellow shading indicates forecast data

Dispatch Data (Week 3 - begin 10/01/09)

Variety	Trays	Bulk	P/Pk	Other	5.5Kg Eqv
	5.5kg eqv	10Kg	Kg	Kg	Total Trays
Gwen	2,121	210			2,503
Hass	149,726	7,113	17,574	1,200	166,072
Lamb Hass	524	27			573
Reed	1,128	356			1,775
Shepard	3,158	21			3,196
Wurtz	53				53
Total	156,710	7,727	17,574	1,200	174,174

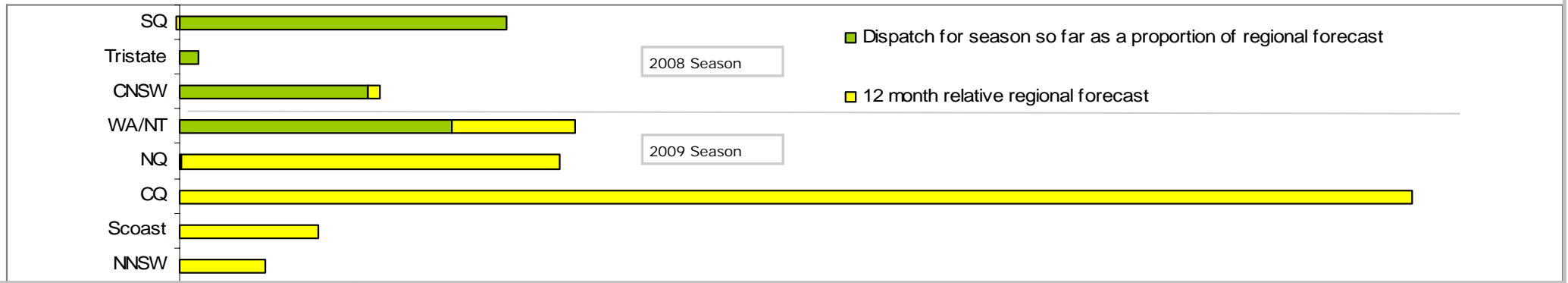
Dispatch vs weekly forecast for Australian & NZ Avocados - all varieties and all packs (30th August 2008 to 13th February 2009)



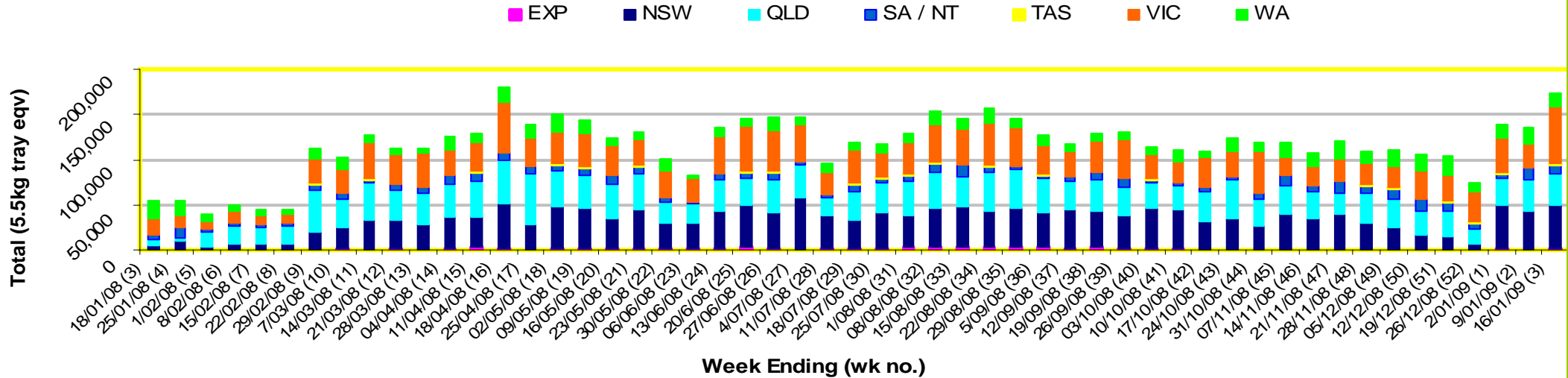
New Zealand Avocado Exports—Forecast v Import Statistics (5.5kg eqv trays) August 2008-April 2009

Export Dest'n	Aug	Sep	Oct	Nov	Dec	Jan	Feb	Mar	Apr	Total to date
NZ Export Forecast		26,730	177,487	319,958	378,497	304,722	122,824	6,282		1,336,500
Australia	0	7,713	210,274	312,989	345,200					530,976
USA										
Japan		3,920	21,563	37,519	24,334					87,335
Total	0	11,633	231,837	350,508	24,334					618,311

Percentage dispatched by region (Based on seasonal forecast - 2008)



Throughput Australian & NZ avocados by destination State
Throughput 1st January 2009 to date = 448,994 5.5kg tray eqv



Week 3 contributors - Packhouses

- | | |
|--------------------------------------|-----------------------------------|
| Advance Packing & Marketing Services | Midcoast Avocados |
| NZ Avocado Industry Council | Natures Fruit Company |
| AvoLand | One Harvest |
| Avonova | Perseverance Farming Co |
| C F Fechner | RM & KL Cornwall |
| Chinoola Orchards | Sunfresh |
| Chislett Developments Pty Ltd | Sunrise Avocados |
| Coastal Avocados | Tam MT Farm Management |
| Delroy Orchards | VP & EA Farrell |
| I & A Tolson | Willow Creek Strawberries Pty Ltd |
| Kulnura Ambrosia Avocados | WJ Row |
| Merrinee Farms | |

Week 3 contributors - Wholesalers

- | | |
|-----------------------------------|---------------------------------------|
| Barkers (Melbourne) | Premier Fruits Pty Ltd (Melbourne) |
| Costa Exchange Trading (Adelaide) | Quality Produce International (Perth) |
| Dykes Bros (Melbourne) | The La Manna Group (Adelaide) |
| Etherington (Perth) | The La Manna Group (Brisbane) |
| Exotic Fruit Traders (Sydney) | The La Manna Group (Melbourne) |
| Mercer Mooney (Perth) | United Fresh (Adelaide) |
| Murray Bros (Brisbane) | |

Sales Report including Direct Sales from Packhouses, Wholesale Sales and Stock on Hand at Wholesale Level

	Trays 5.5kg eqv (incl. Mod6 & P84)				Bulk 10kg Cartons					Pre-Pack Kg					Total (5.5kg eqv)			
	Hass	Shepard	Other	Total	Hass	Shepard	Other	Total	5.5kg eqv	Hass	Shepard	Other	Total	5.5kg eqv	Hass	Shepard	Other	Total
NSW																		
Total supermarket sales																		
Total non supermarket sales																		
Total exports																		
Total sales	28,859			28,859	1,043			1,043	1,896									30,755
Total stock on hand																		
QLD																		
Total supermarket sales																		
Total non supermarket sales																		
Total exports																		
Total sales	38,930			38,930	96			96	175	5,574			5,574	1,013				40,118
Total stock on hand																		
SA & TAS																		
Total supermarket sales	9,833			11	9,844					6,089			6,089	1,107	10,940		11	10,951
Total non supermarket sales	5,687			434	6,121	765		1	766	1,393					7,078		436	7,514
Total exports																		
Total sales	15,520			445	15,965	765		1	766	1,393			6,089	1,107	18,018		447	18,465
Total stock on hand #	3,144			-8	3,136	307		17	324	589			25	5	3,707		23	3,730
VIC																		
Total supermarket sales	36,549				36,549										36,549			36,549
Total non supermarket sales	3,389				3,389	201			201	365					3,755			3,755
Total exports																		
Total sales	39,939				39,939	201			201	365					40,304			40,304
Total stock on hand	8,750				8,750	12			12	22					8,772			8,772
WA																		
Total supermarket sales	6,422				6,422					6,000			6,000	1,091	7,513			7,513
Total non supermarket sales	4,707				4,707	864			864	1,571					6,278			6,278
Total exports	400				400										400			400
Total sales	11,529				11,529	864			864	1,571			6,000	1,091	14,191			14,191
Total stock on hand #	6,882				6,882	1,087			1,087	1,976					8,858			8,858
TOTAL																		
Total supermarket sales	93,065			11	93,076					17,663			17,663	3,211	96,276		11	96,287
Total non supermarket sales	40,652			434	41,086	2,873		1	2,874	5,225					45,875		436	46,311
Total exports	1,060				1,060	96			96	175					1,235			1,235
Total sales	134,777			445	135,222	2,969		1	2,970	5,400			17,663	3,211	143,386		447	143,833
Total stock on hand	37,305			-8	37,297	1,440		17	1,457	2,649			25	5	39,927		23	39,950

Weekly National Sales

