



INFOCADO WEEKLY REPORT

2nd - 8th August 2008 (Wk 32)

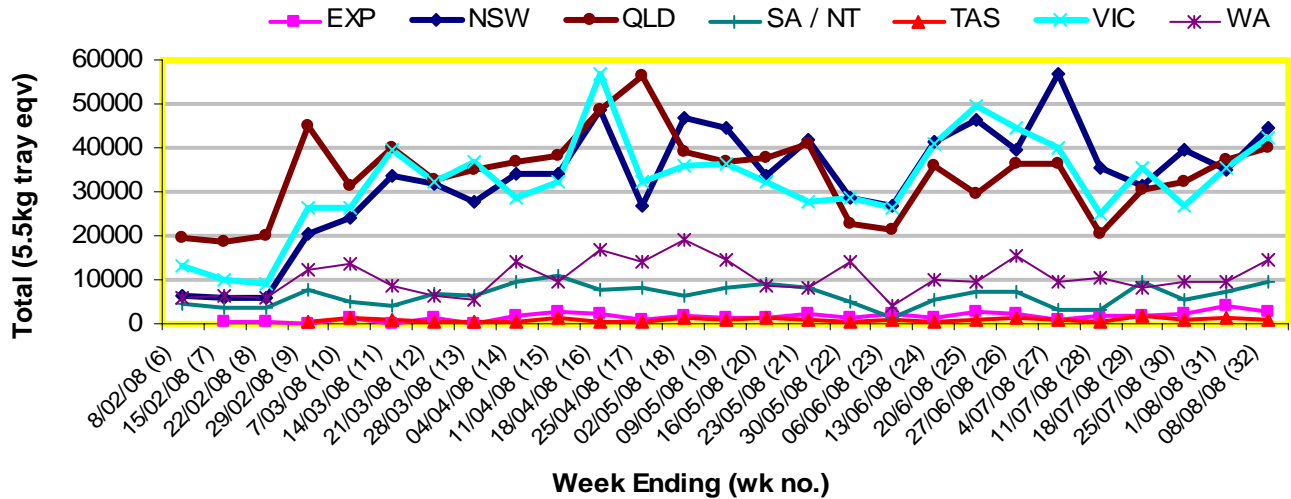
Green shading indicates dispatch data

Yellow shading indicates forecast data

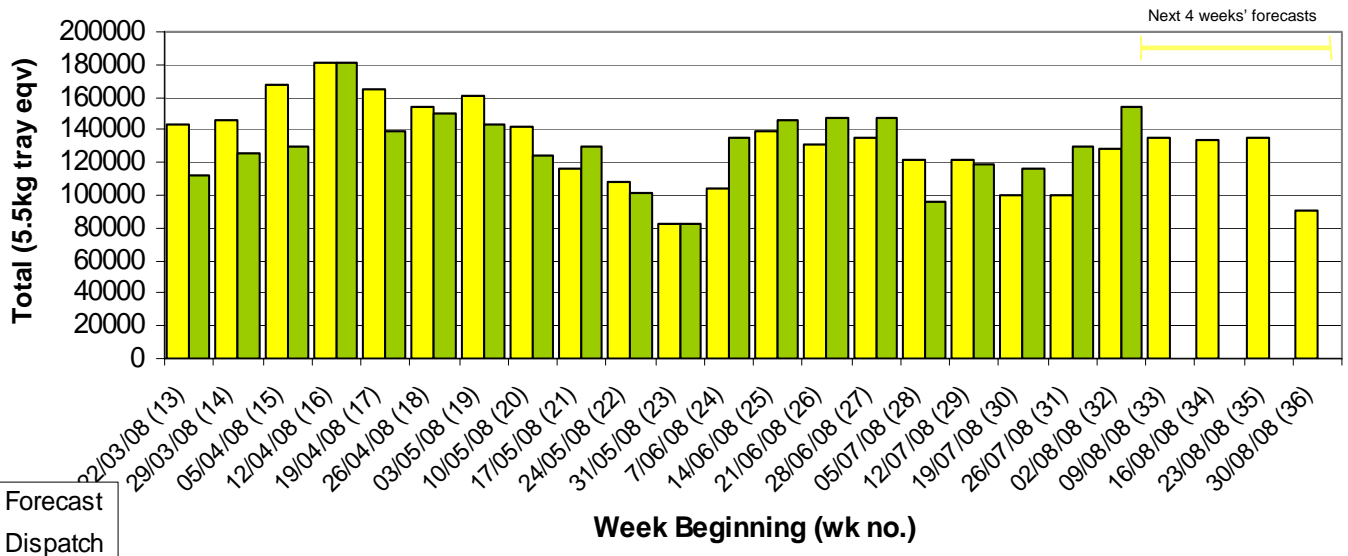
Industry Dispatches 2nd – 8th August 2008 (Wk 32)

Dest. State	5.5kg	5.5kg	5.5kg	5.5kg	5.5kg	5.5kg	5.5kg	5.5kg	5.5kg	5.5kg	Bulk	P/PK	Other	5.5Kg Eqv Trays All
	<16	16	18	20	22	23	25	28	28+	Total	10Kg	Kg	Kg	Total
EXP				15		6	297	777	1,254	2,349	115			2,558
NSW	563	2,434	10,391	5,402	2,087	6,742	3,506	1,748	402	33,275	5,586	4,776	200	44,335
QLD	1,712	1,374	3,096	8,878	598	9,381	3,946	2,497	318	31,800	3,836	5,305	460	39,824
SA / NT	92	52	302	679	268	2,873	3,487	665	180	8,598	548			9,594
TAS								721		721				721
VIC	120	3,359	13,586	6,454	1,003	6,147	2,849	1,085	124	34,727	3,742	5,286		42,492
WA		150	663	5,631	222	793	842	397	124	8,822	3,080	1,012		14,606
Total	2,487	7,369	28,038	27,059	4,178	25,942	15,648	7,169	2,402	120,292	16,907	16,379	660	154,130

Throughput Australian avocados by destination State Throughput 1st January 2008 to date = 3,444,479 5.5kg tray eqv



Dispatch vs weekly forecast for Australian Avocados - all varieties and all packs (22nd March 2008 to 5th September 2008)



Major Capital City Weather Report – week ahead

City	Tue	Wed	Thu	Fri	Public Hols	School Holidays
Brisbane	20	20°	20°	22°	13th Aug - Royal Show	20th Sept - 5th Oct
Melbourne	13°	13°	13°	13°	4th Nov - Melb. Cup Day	20th Sept - 5th Oct
Perth	19°	20°	22°	21°	29th Sept - Queen's B/day	27th Sept - 13th Oct
Sydney	16°	17°	17°	17°	6th Oct - Labour Day	27th Sept - 13th Oct

Forecast Data (Week 32-36)

Variety	Trays - Total	Bulk	P/Pk	Other	All - Total
	5.5Kg Eqv	10Kg	Kg	Kg	5.5Kg Eqv
Week 32 - begin 02/08/08					
Bacon		40			73
Fuerte	620	470			1,475
Gwen	100				100
Hass	101,426	8,785	11,000		119,399
Reed	5,000				5,000
Sharwil	1,230	30	2,000	50	1,658
Wurtz	100				100
Week Total	108,476	9,325	13,000	50	127,804
Week 33 - begin 09/08/08					
Bacon		80			145
Fuerte	652	211			1,036
Gwen	250	10			268
Hass	104,192	10,816	11,160		125,886
Lamb Hass		250			455
Reed	5,000				5,000
Sharwil	1,670	90	1,518		2,110
Wurtz	900				900
Week Total	112,664	11,457	12,678		135,800
Week 34 - begin 16/08/08					
Bacon		40			73
Fuerte	620	180			947
Gwen	250	10			268
Hass	107,200	8,945	11,300	50	125,528
Lamb Hass	100	300			645
Reed	5,000				5,000
Sharwil	620	70	1,500		1,020
Wurtz	30	10			48
Week Total	113,820	9,555	12,800	50	133,529
Week 35 - begin 23/08/08					
Fuerte	360	30			415
Gwen	250	10			268
Hass	108,372	9,530	11,300		127,754
Lamb Hass	100	50			191
Reed	5,000				5,000
Sharwil	500	30	1,500		828
Wurtz	30	10			48
Week Total	114,612	9,660	12,800		134,503
Week 36 - begin 30/08/08					
Fuerte	360	30			415
Hass	75,634	6,330	11,300		89,198
Sharwil	60	20	1,500		369
Week Total	76,054	6,380	12,800		89,981

Dispatch Data (Week 32 - begin 02/08/08)

Variety	Trays	Bulk	P/Pk	Other	5.5Kg Eqv
	5.5kg eqv	10Kg	Kg	Kg	Total Trays
Bacon		79			144
Fuerte	577	396			1,297
Gwen	255	11			275
Hass	111,329	15,630	14,729	660	142,545
Lamb Hass	2,072	448			2,887
Reed	3,513	2			3,517
Sharwil	2,513	334	1,650		3,420
Wurtz	33	7			46
Total	120,292	16,907	16,379	660	154,130

Week 32 contributors

Avowest
 Balmoral Orchard
 BT & RG Pegg
 C F Fechner
 Coastal Avocados
 Donovan Avocados
 G & C Christensen
 G & J Krenske
 Googa Farms
 Green Nugget Orchards
 I & A Tolson
 Jirel Holdings
 Midcoast Avocados
 Mountain Fresh
 Mt Binga Orchards Pty Ltd
 Natures Fruit Company
 One Harvest
 RM & KL Cornwall
 Rob Farnsworth Pty Ltd
 Simpsons Farms Pty Ltd
 Summerland House With No Steps
 Sunfresh
 Sunnyspot Packhouse PL
 Tenterfield Fruit Packers
 Touchwood Farming

Percentage dispatched by region (Based on seasonal forecast - 2008)

