



# INFOCADO WEEKLY REPORT

11th August to 17th August 2007 (Wk 33)

Green shading indicates dispatch data

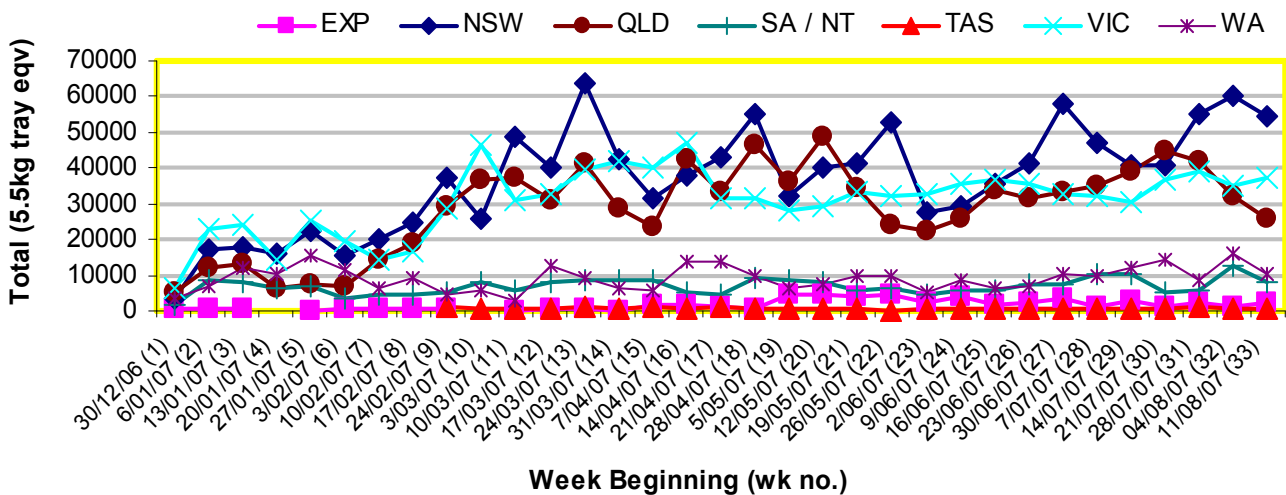
Yellow shading indicates forecast data

## Industry Dispatches 11th August to 17th August 2007 (Wk 33)

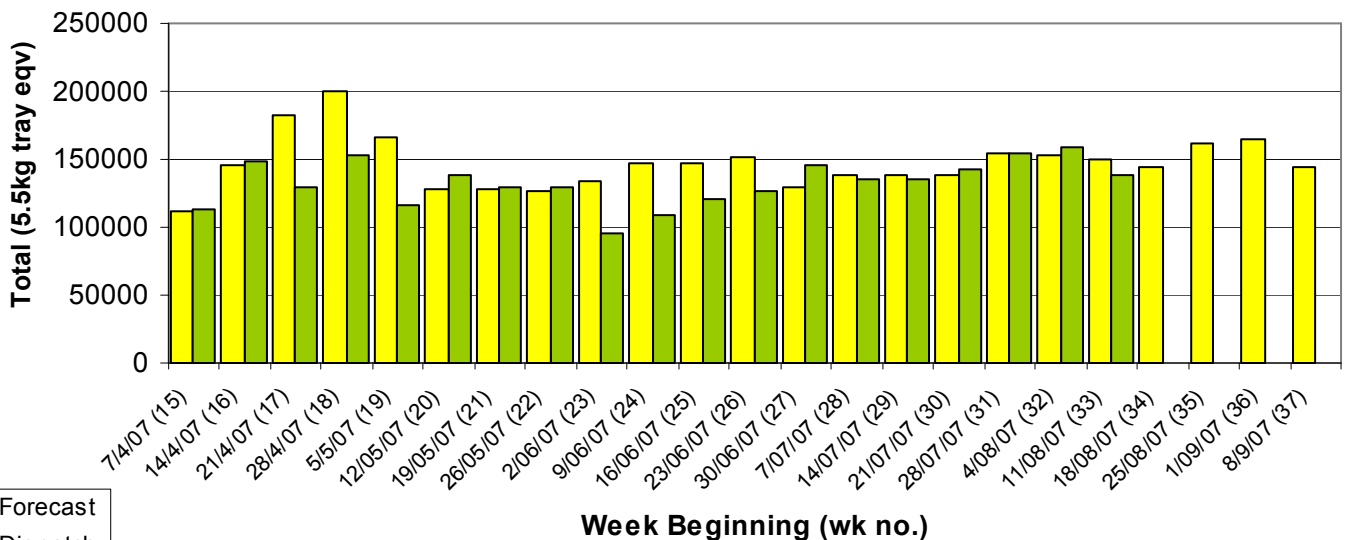
Dest. State	5.5kg	5.5kg	5.5kg	5.5kg	5.5kg	5.5kg	5.5kg	5.5kg	5.5kg	5.5kg	Bulk	P/PK	Other	5.5Kg Eqv Trays All	
	<16	16	18	20	22	23	25	28	28+	Total				10Kg	Kg
EXP									1,576	313					2,071
NSW	189	530	4,451	7,119	1,253	13,444	4,803	3,050	120		8,141	24,321	500	54,274	
QLD	4	18	3,662	835	447	872	7,060	1,627	160		3,173	27,976	320	25,599	
SA / NT		1	160	61	41	303	5,106	455	36		1,012			8,003	
TAS							720							720	
VIC	93	1,373	4,427	15,177	277	5,527	1,586	1,050	472		3,516	6,284		37,518	
WA	1	42	20	1,211		740	2,620	780			2,326	3,740		10,323	
<b>Total</b>	<b>287</b>	<b>1,964</b>	<b>12,720</b>	<b>24,403</b>	<b>2,018</b>	<b>20,886</b>	<b>21,895</b>	<b>8,538</b>	<b>1,101</b>		<b>18,268</b>	<b>62,321</b>	<b>820</b>	<b>138,507</b>	

### Throughput Australian avocados by destination State

Throughput 1st January 2007 to date = 3,799,225 5.5kg tray eqv



### Dispatch vs weekly forecast for all varieties and all packs (7th April 2007 to 14th September 2007)



### Major Capital City Weather Report – week ahead

City	Tue	Wed	Thu	Fri	Public Hols	Upcoming school Hols
Brisbane	19°	19°	19°	21°		22nd Sep-7th Oct
Melbourne	14°	17°	17°	19°	November 6—Melbourne Cup Day	22nd Sep-7th Oct
Perth	21°	21°	19°	19°	October 1—Queen's B'day	29th Sep—15th Oct
Sydney	18°	17°	19°	19°	October 1—Labour Day	29th Sep-14th Oct

#### Forecast Data (Week 33-37)

Variety	Trays - Total	Bulk	P/Pk	Other	All - Total
	5.5Kg Eqv	10Kg	Kg	Kg	5.5Kg Eqv
Week 33—begin 11/8/07					
Fuerte	196	120			<b>414</b>
Hass	124,141	9,191	18,500	2,600	<b>145,234</b>
Sharwil	860	295			<b>1,396</b>
Wurtz	2,000	460			<b>2,836</b>
<b>Week Total</b>	<b>127,197</b>	<b>10,066</b>	<b>18,500</b>	<b>2,600</b>	<b>149,881</b>
Week 34—begin 18/8/07					
Fuerte	266	51			<b>359</b>
Hass	121,549	8,452	23,054	3,185	<b>141,687</b>
Sharwil	870	240			<b>1,306</b>
Wurtz	900	300			<b>1,445</b>
<b>Week Total</b>	<b>123,585</b>	<b>9,043</b>	<b>23,054</b>	<b>3,185</b>	<b>144,798</b>
Week 35—begin 25/8/07					
Fuerte	240	119			<b>456</b>
Hass	133,825	9,915	20,500	3,600	<b>156,234</b>
Sharwil	1,800	550			<b>2,800</b>
Wurtz	1,400	600			<b>2,491</b>
<b>Week Total</b>	<b>137,265</b>	<b>11,184</b>	<b>20,500</b>	<b>3,600</b>	<b>161,982</b>
Week 36—begin 1/09/07					
Fuerte	100	110			<b>300</b>
Hass	136,105	10,099	20,500	3,600	<b>158,849</b>
Sharwil	1,300	550			<b>2,300</b>
Wurtz	1,900	680			<b>3,136</b>
<b>Week Total</b>	<b>139,405</b>	<b>11,439</b>	<b>20,500</b>	<b>3,600</b>	<b>164,585</b>
Week 37 begin—8/09/07					
Fuerte	200	10			<b>218</b>
Hass	119,882	8,777	20,500	3,750	<b>140,249</b>
Sharwil	500	200			<b>864</b>
Wurtz	1,200	550			<b>2,200</b>
<b>Week Total</b>	<b>121,782</b>	<b>9,537</b>	<b>20,500</b>	<b>3,750</b>	<b>143,531</b>

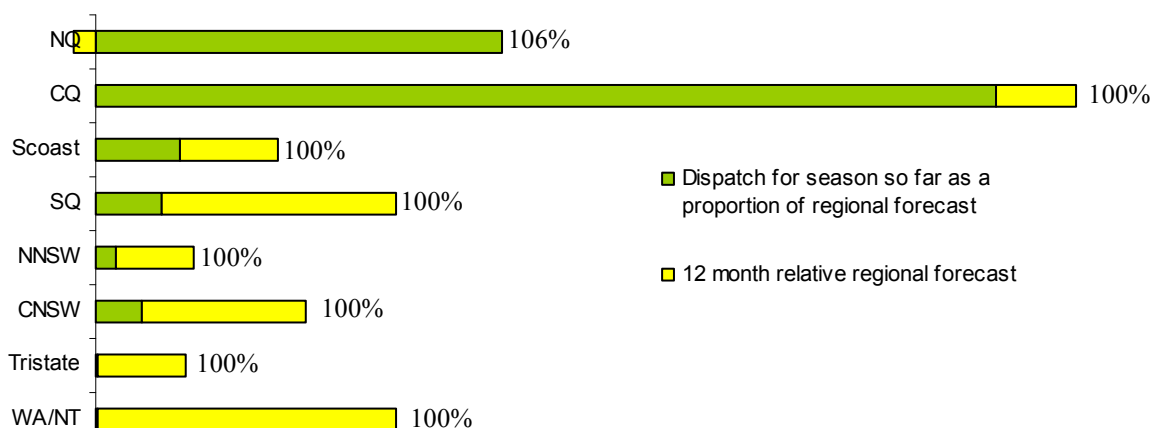
#### Dispatch Data (Week 33—begin 11/08/07)

Variety	Trays	Bulk	P/PK	Other	5.5Kg Eqv
	5.5kg eqv	10Kg	Kg	Kg	Total Trays
Fuerte	90	34	0	0	<b>152</b>
Hass	91,553	17,463	62,321	500	<b>134,726</b>
Pinkerton	0	203	0	320	<b>427</b>
Sharwil	1,043	357	0	0	<b>1,692</b>
Wurtz	1,126	211	0	0	<b>1,510</b>
<b>Grand</b>	<b>93,812</b>	<b>18,268</b>	<b>62,321</b>	<b>820</b>	<b>138,507</b>

#### Week 33 contributors

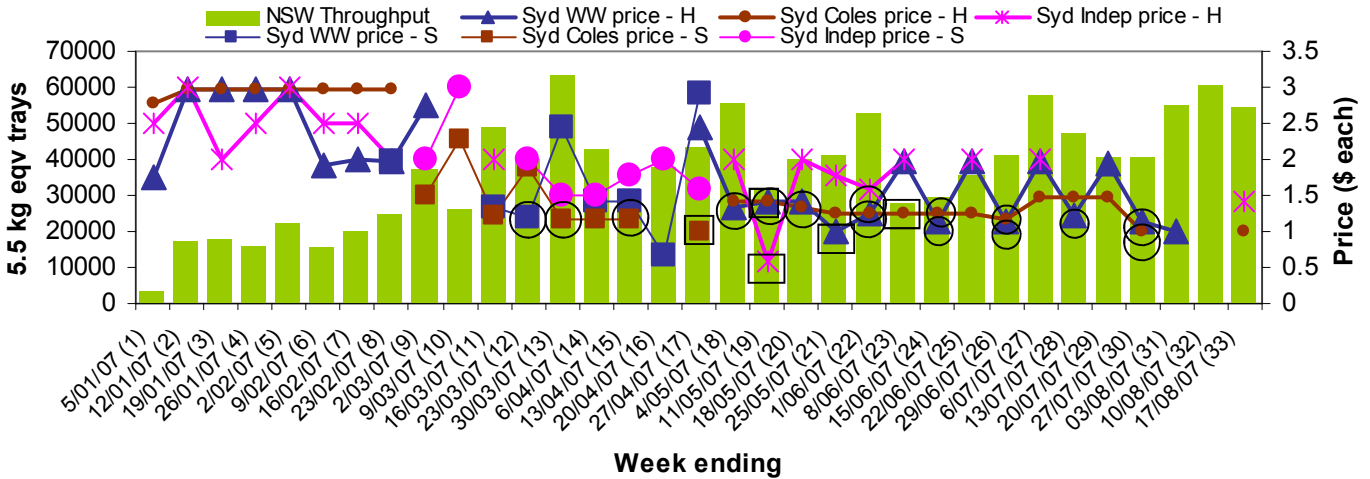
Avocado Estates  
 Balmoral Orchard  
 BT & RG Pegg  
 C F Fechner  
 Coastal Avocados  
 DJ Tottenham  
 Donovan Avocados  
 G & C Christensen  
 G & J Krenske  
 Goodlife Orchards  
 Googa Farms  
 Green Nugget Orchards  
 Green Pear Avocado  
 Green Pigeon Orchards  
 Jirel Holdings  
 Merrinee Farms  
 Midcoast Avocados  
 Mt Binga Orchards Pty Ltd  
 Natures Fruit Company  
 One Harvest  
 RG & DV Rohde  
 RM & KL Cornwall  
 Rob Farnsworth Pty Ltd  
 Simpsons Farms Pty Ltd (1)  
 Summerland House With No Steps  
 Sunfresh  
 Sunny Bluff Produce Pty Ltd  
 Sunnyspot Packhouse PL  
 Tenterfield Fruit Packers  
 The Avocado Grove  
 Touchwood Farming  
 Tropicado Avocados

#### Percentage dispatched by region (Based on seasonal forecast - 2007)

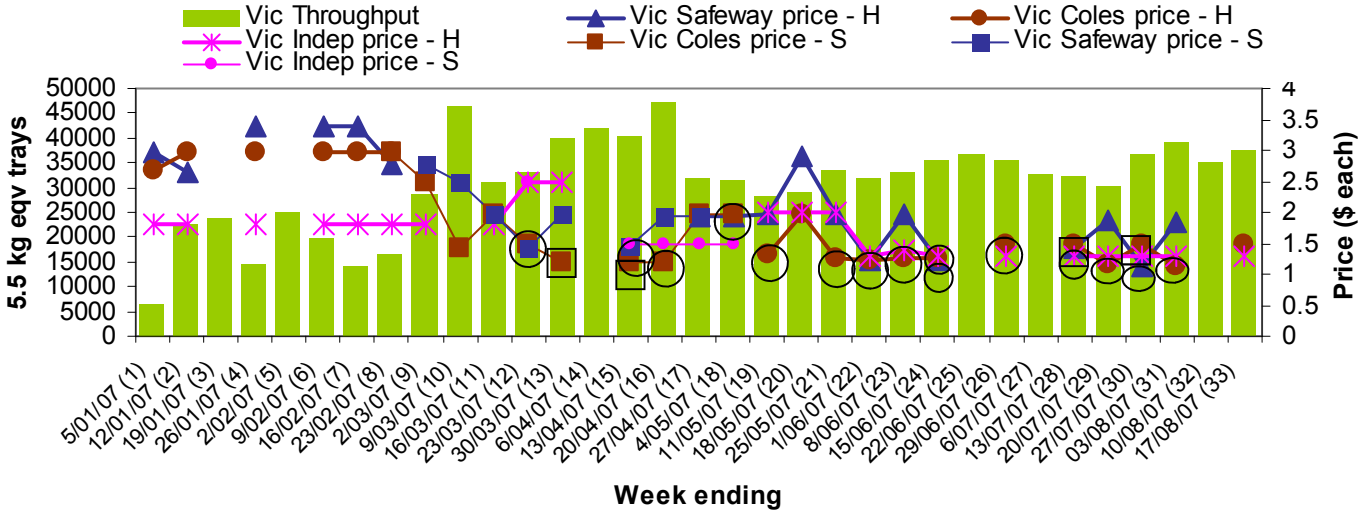


NB: H = Hass, S= Shepard, ○ = catalogue special □ = store special

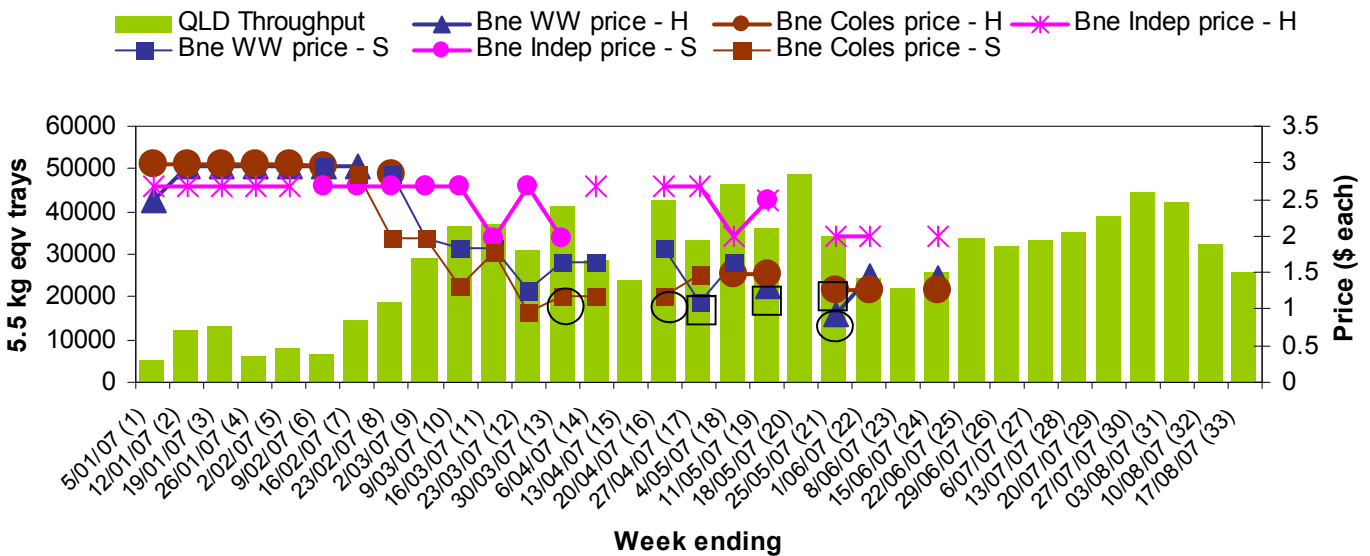
### Sydney Avocado Retail Prices vs Dispatches - Destination state NSW



### Melbourne Avocado Retail Prices vs Dispatches - Destination state Vic



### Brisbane Avocado Retail Prices vs Dispatches - Destination state Qld



For more detailed reports please go to [www.avocado.org.au](http://www.avocado.org.au) and login to Infocado. Instructions on accessing reports are available in your Infocado Information kit under 'Retrieving information'

For further assistance please contact: Joanna Embry, Ph: 07 3391 2344, Email: [infocado@avocado.org.au](mailto:infocado@avocado.org.au)