



# INFOCADO WEEKLY REPORT

9th - 15th August 2008 (Wk 33)

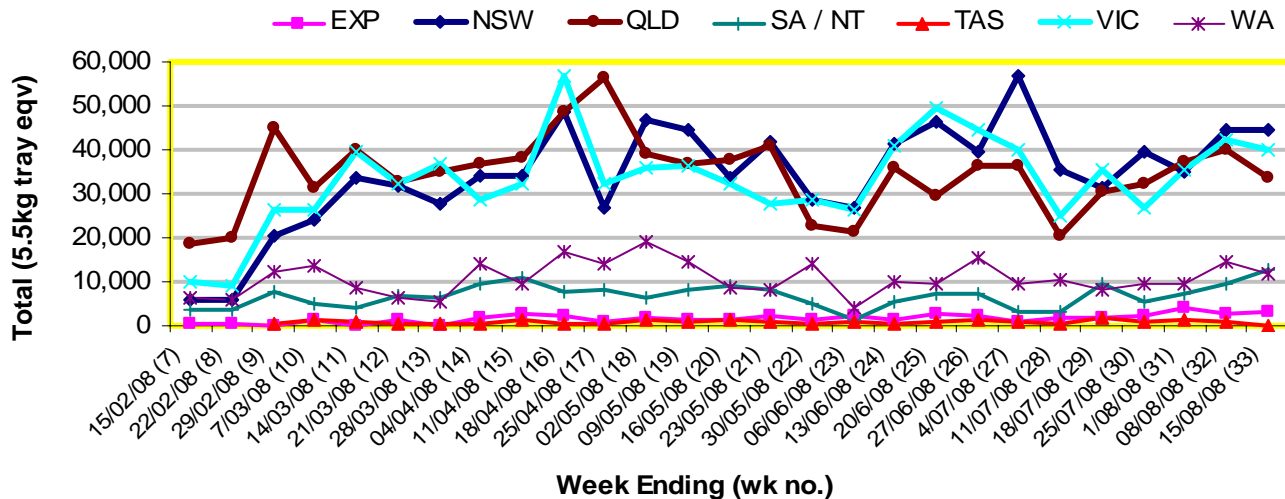
Green shading indicates dispatch data

Yellow shading indicates forecast data

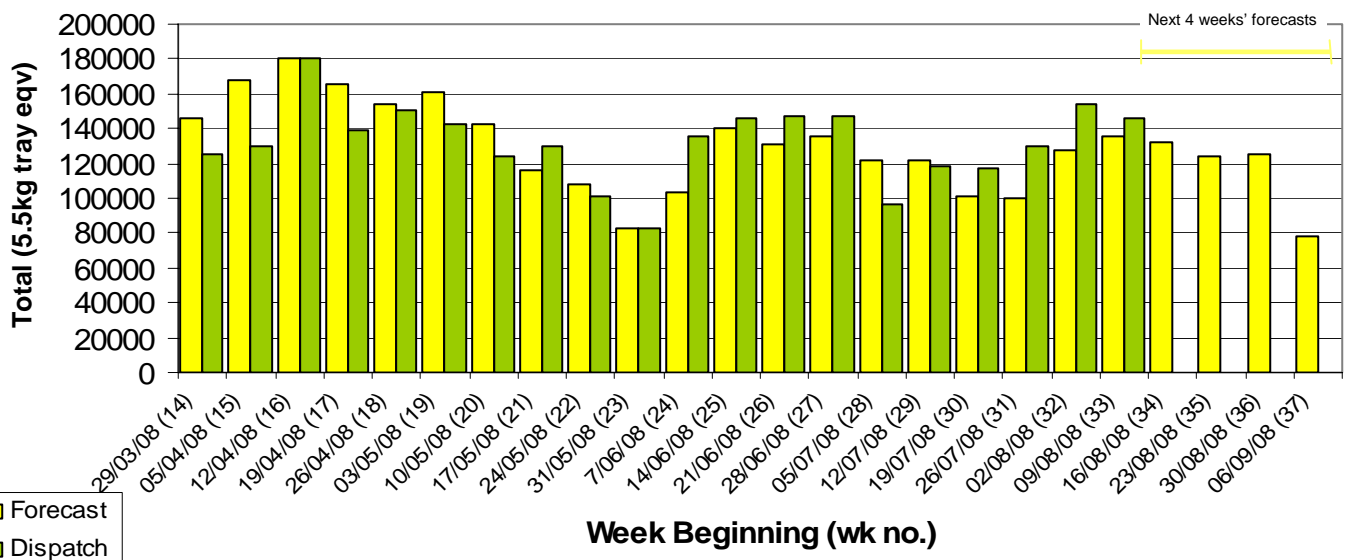
## Industry Dispatches 9th – 15th August 2008 (Wk 33)

Dest. State	5.5kg <16	5.5kg 16	5.5kg 18	5.5kg 20	5.5kg 22	5.5kg 23	5.5kg 25	5.5kg 28	5.5kg 28+	5.5kg Total	Bulk 10Kg	P/PK Kg	Other Kg	5.5Kg Eqv Trays All Total
EXP				15				1,301	1,622	2,938	80			3,083
NSW	572	2,494	12,104	7,024	1,584	5,359	3,479	2,652	377	35,645	4,509	5,103		44,771
QLD	1,528	1,228	1,761	8,100	299	7,290	4,794	1,022	217	26,239	3,126	8,053	1,060	33,580
SA / NT		159	785	891	325	4,525	3,246	954	243	11,128	868	660		12,826
TAS							148			148				148
VIC	1,078	3,811	11,494	7,268	744	4,797	1,832	1,010	12	32,046	3,758	5,748		39,924
WA	10	39	527	2,135	98	930	1,138	912	28	5,817	3,109	680		11,594
<b>Total</b>	<b>3,188</b>	<b>7,731</b>	<b>26,671</b>	<b>25,433</b>	<b>3,050</b>	<b>22,901</b>	<b>14,637</b>	<b>7,851</b>	<b>2,499</b>	<b>113,961</b>	<b>15,450</b>	<b>20,244</b>	<b>1,060</b>	<b>145,926</b>

## Throughput Australian avocados by destination State Throughput 1st January 2008 to date = 3,590,404 5.5kg tray eqv



## Dispatch vs weekly forecast for Australian Avocados - all varieties and all packs (29th March 2008 to 12th September 2008)



## Major Capital City Weather Report – week ahead

City	Tue	Wed	Thu	Fri	Public Hols	School Holidays
<b>Brisbane</b>	21	22°	23°	23°	25th Dec - Christmas	20th Sept - 5th Oct
<b>Sydney</b>	17°	20°	20°	16°	4th Nov - Melb. Cup Day	20th Sept - 5th Oct
<b>Melbourne</b>	15°	15°	13°	13°	29th Sept - Queen's B/day	27th Sept - 13th Oct
<b>Perth</b>	19°	18°	20°	22°	6th Oct - Labour Day	27th Sept - 13th Oct

### Forecast Data (Week 33-37)

Variety	Trays - Total	Bulk	P/Pk	Other	All - Total
	5.5Kg Eqv	10Kg	Kg	Kg	5.5Kg Eqv
Week 33 - begin 09/08/08					
Bacon		80			145
Fuerte	652	211			1,036
Gwen	250	10			268
Hass	104,192	10,816	11,160		125,886
Lamb Hass		250			455
Reed	5,000				5,000
Sharwil	1,670	90	1,518		2,110
Wurtz	900				900
<b>Week Total</b>	<b>112,664</b>	<b>11,457</b>	<b>12,678</b>		<b>135,800</b>
Week 34 - begin 16/08/08					
Bacon		40			73
Fuerte	585	185			921
Gwen	250	10			268
Hass	105,948	8,985	11,400	50	124,366
Lamb Hass	60	280			569
Reed	5,000				5,000
Sharwil	620	90	1,500		1,057
Wurtz	30	10			48
<b>Week Total</b>	<b>112,493</b>	<b>9,600</b>	<b>12,900</b>	<b>50</b>	<b>132,302</b>
Week 35 - begin 23/08/08					
Fuerte	350	50			441
Gwen	250	10			268
Hass	99,532	9,530	11,400		118,932
Lamb Hass	100	250			555
Reed	3,000				3,000
Sharwil	500	30	1,500		828
Wurtz	30	10			48
<b>Week Total</b>	<b>103,762</b>	<b>9,880</b>	<b>12,900</b>	<b>0</b>	<b>124,071</b>
Week 36 - begin 30/08/08					
Fuerte	380	45			462
Gwen	250	15			277
Hass	101,258	9,492	11,400		120,589
Reed	3,000				3,000
Sharwil	860	40	1,500		1,206
Wurtz	50	10			68
<b>Week Total</b>	<b>105,798</b>	<b>9,602</b>	<b>12,900</b>	<b>0</b>	<b>125,601</b>
Week 37 - begin 06/09/08					
Fuerte	250	10			268
Hass	65,365	6,612	1,400		77,642
Sharwil			1,500		273
<b>Week Total</b>	<b>65,615</b>	<b>6,622</b>	<b>2,900</b>		<b>78,182</b>

### Dispatch Data (Week 33 - begin 09/08/08)

Variety	Trays	Bulk	P/Pk	Other	5.5Kg Eqv
	5.5kg eqv	10Kg	Kg	Kg	Total Trays
Fuerte	357	93			526
Gwen	257	17			288
Hass	103,102	14,032	18,726	1,060	132,213
Lamb Hass	3,873	513			4,806
Reed	3,092	376			3,776
Sharwil	2,349	419	1,518		3,387
Wurtz	931				931
<b>Total</b>	<b>113,961</b>	<b>15,450</b>	<b>20,244</b>	<b>1,060</b>	<b>145,926</b>

### Week 33 contributors

Avowest  
 Balmoral Orchard  
 Blackboy Ridge Pty Ltd  
 BT & RG Pegg  
 Coastal Avocados  
 Donovan Avocados  
 Green Nugget Orchards  
 Green Pear Avocado  
 I & A Tolson  
 Jirel Holdings  
 Midcoast Avocados  
 Mountain Fresh  
 Natures Fruit Company  
 One Harvest  
 Simpsons Farms Pty Ltd  
 Summerland House With No Steps  
 Sunfresh  
 Sunnyspot Packhouse PL  
 Tenterfield Fruit Packers  
 The Avocado Grove  
 Touchwood Farming

### Percentage dispatched by region (Based on seasonal forecast - 2008)

