



# INFOCADO WEEKLY REPORT

18th August to 24th August 2007 (Wk 34)

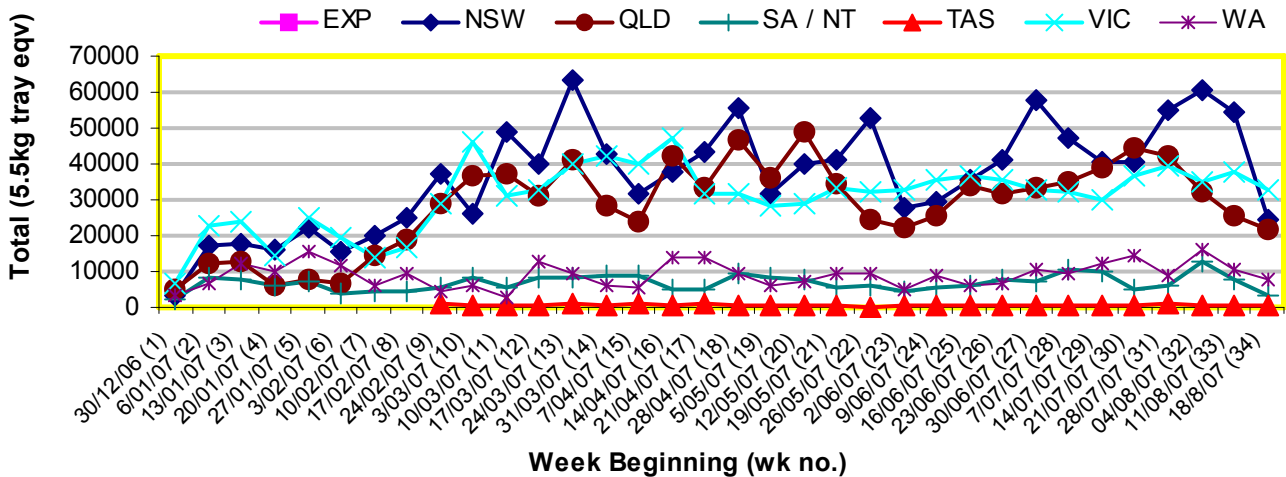
Green shading indicates dispatch data

Yellow shading indicates forecast data

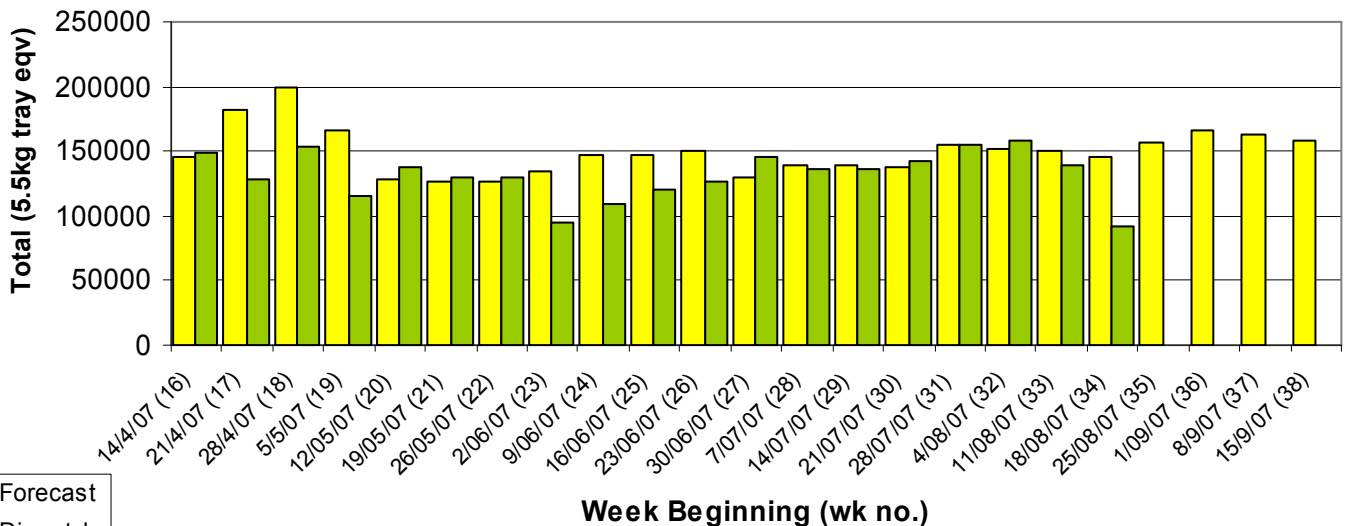
## Industry Dispatches 18th August to 24th August 2007 (Wk 34)

Dest. State	5.5kg	5.5kg	5.5kg	5.5kg	5.5kg	5.5kg	5.5kg	5.5kg	5.5kg	5.5kg	Bulk	P/PK	Other	5.5kg	5.5kg Eqv Trays All	
	<16	16	18	20	22	23	25	28	28+	Total				10Kg		Kg
EXP									696	670				1,366		1,366
NSW	21	1,784	2,656	5,124	799	4,972	2,437	1,437	140		2,072	5,808	45	19,370	24,201	
QLD	91	258	204	922	312	2,401	8,648	1,608	784		2,577	7,954	860	15,228	21,515	
SA / NT			288				288	2,339	288		176	66		3,203	3,535	
TAS								432						432	432	
VIC	54	2,403	3,904	10,613	419	7,563	1,853	1,014	7		2,307	4,320		27,830	32,810	
WA	9	176	364	866		627	2,479	377	36		1,384	2,184		4,934	7,847	
<b>Total</b>	<b>175</b>	<b>4,621</b>	<b>7,416</b>	<b>17,525</b>	<b>1,530</b>	<b>15,851</b>	<b>18,188</b>	<b>5,420</b>	<b>1,637</b>		<b>8,516</b>	<b>20,332</b>	<b>905</b>	<b>72,363</b>	<b>91,709</b>	

## Throughput Australian avocados by destination State Throughput 1st January 2007 to date = 3,890,932 5.5kg tray eqv



## Dispatch vs weekly forecast for all varieties and all packs (14th April 2007 to 21st September 2007)



### Major Capital City Weather Report – week ahead

City	Tue	Wed	Thu	Fri	Public Hols	School Holidays
<b>Brisbane</b>	25°	25°	24°	24°	December 25-26 Christmas & Boxing Days	22nd Sep-7th Oct
<b>Melbourne</b>	20°	18°	22°	15°	November 6—Melbourne Cup Day	22nd Sep-7th Oct
<b>Perth</b>	20°	19°	16°	19°	October 1—Queen's B'day	29th Sep—15th Oct
<b>Sydney</b>	27°	22°	25°	23°	October 1—Labour Day	29th Sep-14th Oct

#### Forecast Data (Week 34-38)

Variety	Trays - Total	Bulk	P/Pk	Other	All - Total
	5.5Kg Eqv	10Kg	Kg	Kg	5.5Kg Eqv
Week 34—begin 18/8/07					
Fuerte	266	51			<b>359</b>
Hass	121,549	8,452	23,054	3,185	<b>141,687</b>
Sharwil	870	240			<b>1,306</b>
Wurtz	900	300			<b>1,445</b>
<b>Week Total</b>	<b>123,585</b>	<b>9,043</b>	<b>23,054</b>	<b>3,185</b>	<b>144,798</b>
Week 35—begin 25/8/07					
Fuerte	240	119			<b>456</b>
Hass	130,356	9,062	20,400	3,500	<b>151,177</b>
Sharwil	1,800	550			<b>2,800</b>
Wurtz	1,400	600			<b>2,491</b>
<b>Week Total</b>	<b>133,796</b>	<b>10,331</b>	<b>20,400</b>	<b>3,500</b>	<b>156,925</b>
Week 36—begin 1/9/07					
Fuerte	100	110			<b>300</b>
Hass	138,303	9,819	20,500	3,600	<b>160,538</b>
Sharwil	1,300	550			<b>2,300</b>
Wurtz	1,900	680			<b>3,136</b>
<b>Week Total</b>	<b>141,603</b>	<b>11,159</b>	<b>20,500</b>	<b>3,600</b>	<b>166,274</b>
Week 37—begin 8/9/07					
Fuerte	100	10			<b>118</b>
Hass	137,960	9,717	20,500	3,750	<b>160,036</b>
Sharwil	600	230			<b>1,018</b>
Wurtz	1,200	550			<b>2,200</b>
<b>Week Total</b>	<b>139,860</b>	<b>10,507</b>	<b>20,500</b>	<b>3,750</b>	<b>163,373</b>
Week 38—begin 15/9/07					
Fuerte	100	10			<b>118</b>
Hass	136,553	9,238	20,500	3,000	<b>157,621</b>
Sharwil	500	200			<b>864</b>
Wurtz	200	50			<b>291</b>
<b>Week Total</b>	<b>137,353</b>	<b>9,498</b>	<b>20,500</b>	<b>3,000</b>	<b>158,894</b>

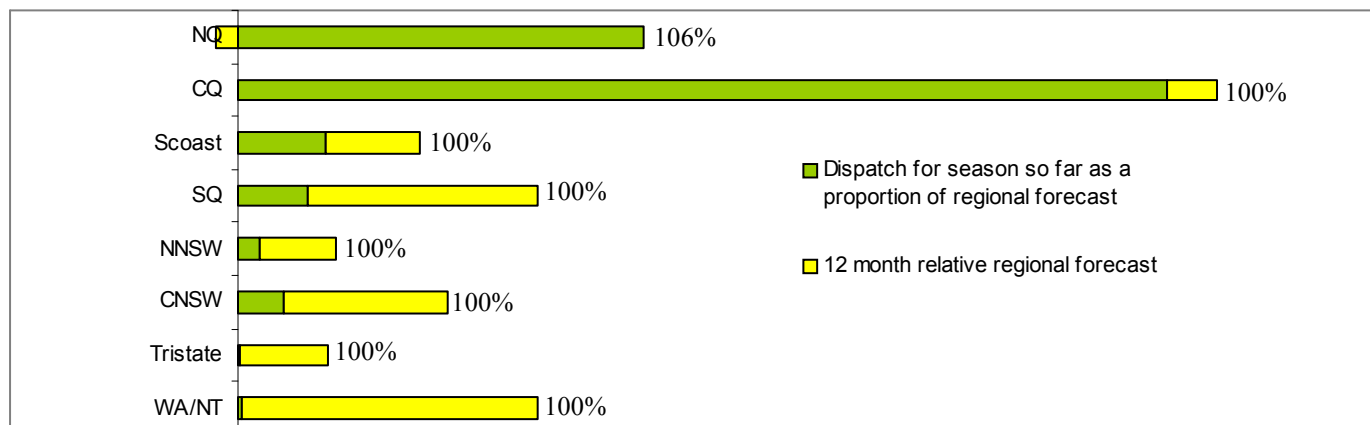
#### Dispatch Data (Week 34—begin 18/08/07)

Variety	Trays	Bulk	P/PK	Other	5.5Kg Eqv
	5.5kg eqv	10Kg	Kg	Kg	Total Trays
Fuerte	142	23	0	0	<b>184</b>
Hass	70,161	8,244	20,332	605	<b>88,957</b>
Pinkerton	215	0	0	300	<b>270</b>
Sharwil	1,019	210	0	0	<b>1,401</b>
Wurtz	826	39	0	0	<b>897</b>
<b>Grand</b>	<b>72,363</b>	<b>8,516</b>	<b>20,332</b>	<b>905</b>	<b>91,709</b>

#### Week 34 contributors

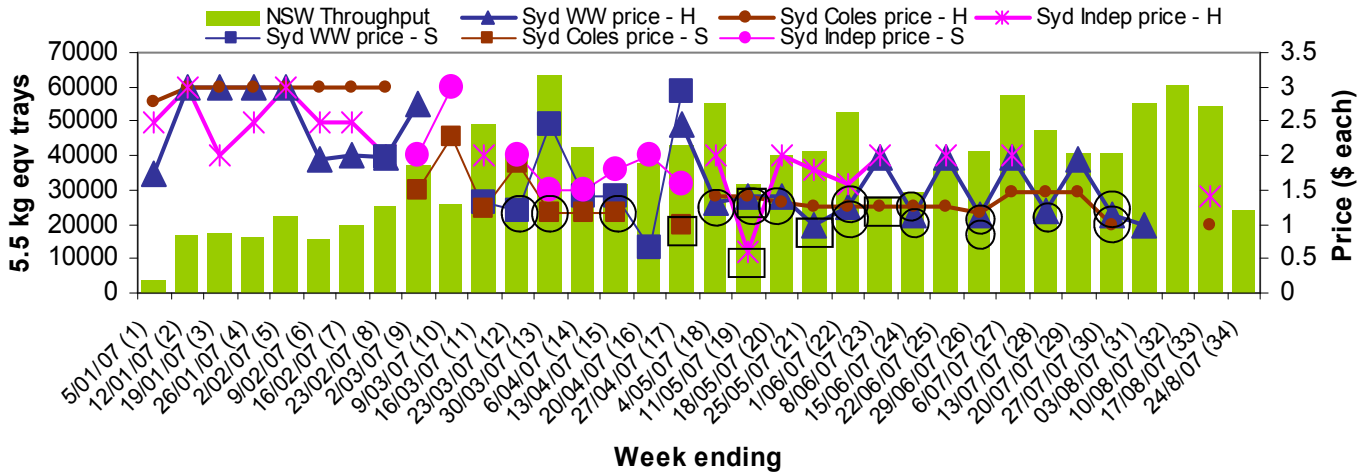
Avowest  
 Balmoral Orchard  
 Blackboy Ridge Pty Ltd  
 C F Fechner  
 Coastal Avocados  
 DJ Tottenham  
 Donovan Avocados  
 G & C Christensen  
 G & J Krenske  
 Goodlife Orchards  
 Green Nugget Orchards  
 Green Pear Avocado  
 Green Pigeon Orchards  
 I & A Tolson  
 JC & SK Smythe  
 Jirel Holdings  
 Midcoast Avocados  
 Natures Fruit Company  
 One Harvest  
 RM & KL Cornwall  
 Rob Farnsworth Pty Ltd  
 Simpsons Farms Pty Ltd  
 Summerland House With No Steps  
 Sunfresh  
 Sunnyspot Packhouse PL  
 Tenterfield Fruit Packers  
 The Avocado Grove  
 Touchwood Farming  
 Tropicado Avocados

#### Percentage dispatched by region (Based on seasonal forecast - 2007)

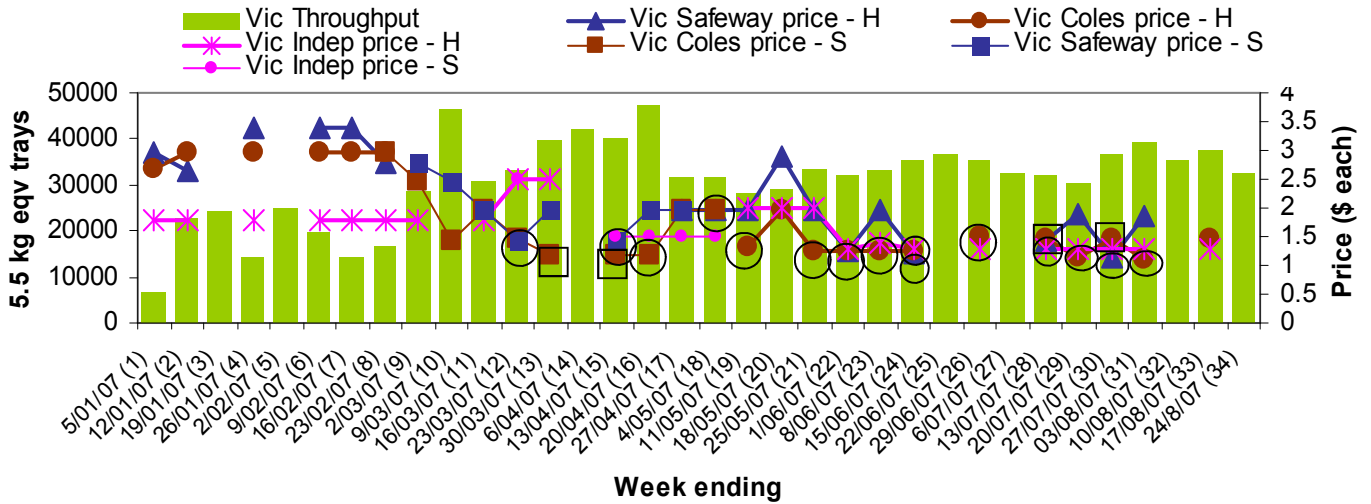


NB: H = Hass, S= Shepard, ○ = catalogue special □ = store special

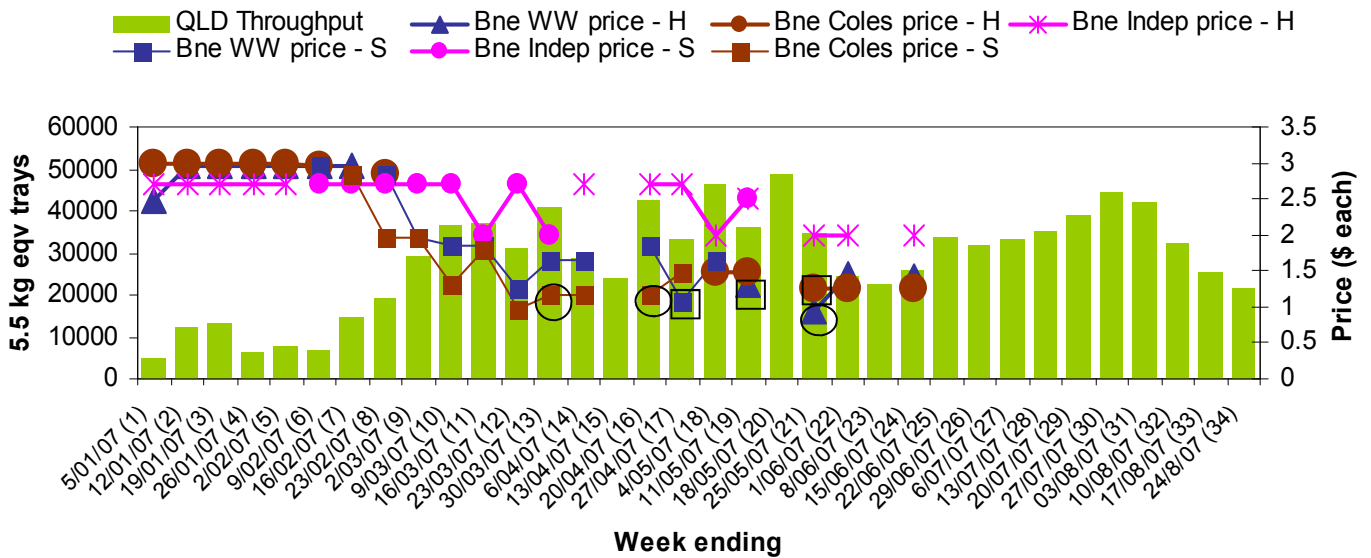
### Sydney Avocado Retail Prices vs Dispatches - Destination state NSW



### Melbourne Avocado Retail Prices vs Dispatches - Destination state Vic



### Brisbane Avocado Retail Prices vs Dispatches - Destination state Qld



For more detailed reports please go to [www.avocado.org.au](http://www.avocado.org.au) and login to Infocado. Instructions on accessing reports are available in your Infocado Information kit under 'Retrieving information'

For further assistance please contact: Joanna Embry, Ph: 07 3391 2344, Email: [infocado@avocado.org.au](mailto:infocado@avocado.org.au)