



# INFOCADO WEEKLY REPORT

16th - 22nd August 2008 (Wk 34)

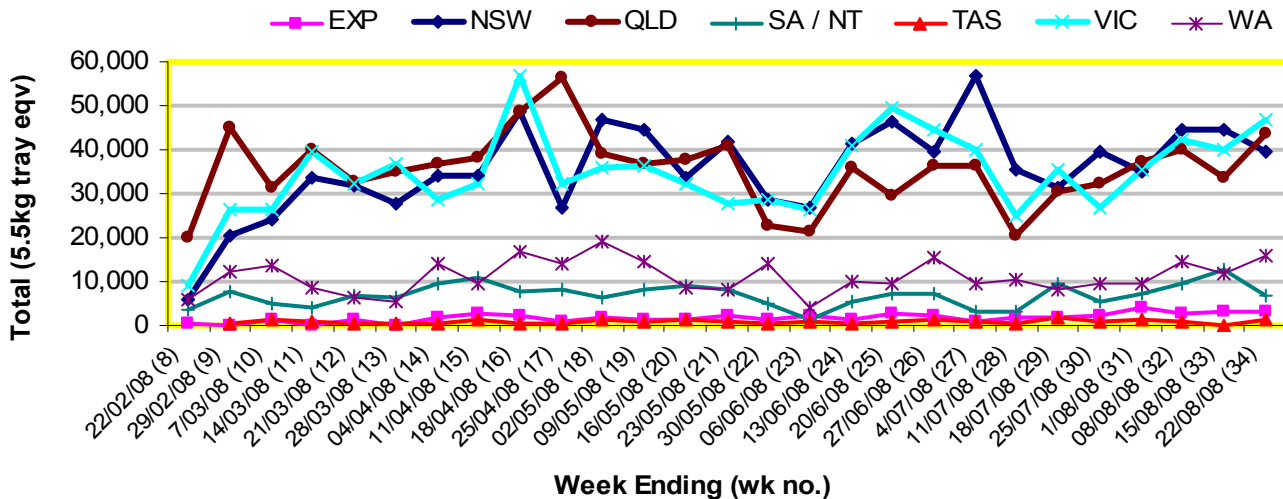
Green shading indicates dispatch data

Yellow shading indicates forecast data

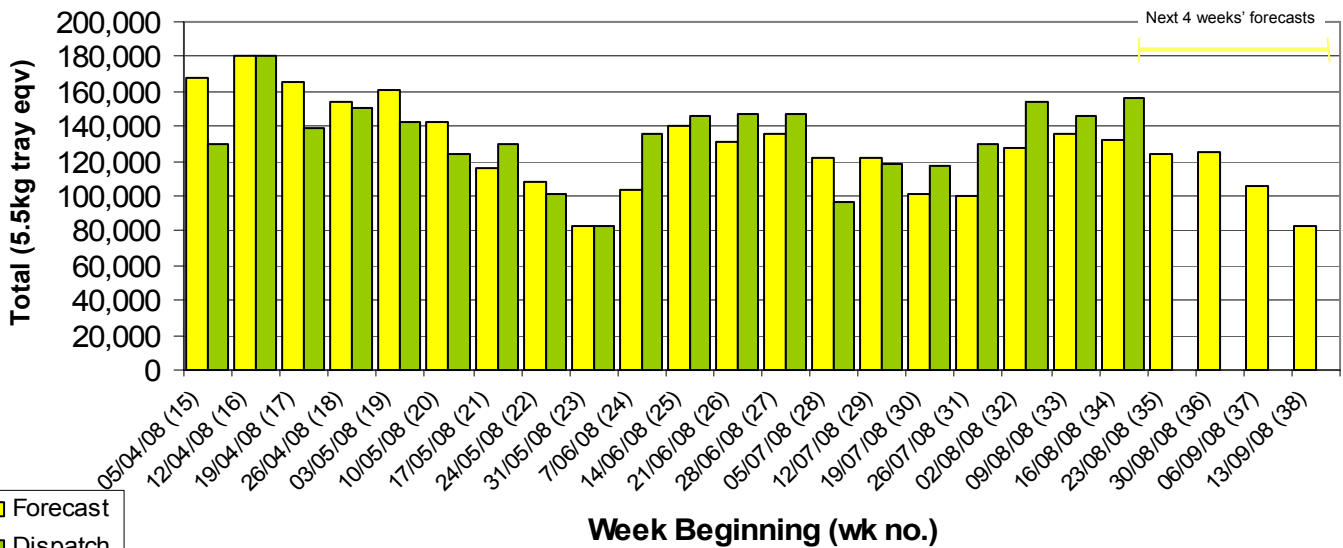
## Industry Dispatches 16th – 22nd August 2008 (Wk 34)

Dest. State	5.5kg									5.5kg Total	Bulk 10Kg	P/PK Kg	Other Kg	5.5Kg Eqv Trays All Total
	<16	16	18	20	22	23	25	28	28+					
EXP				120			41	1,521	1,187	2,869	155			3,151
NSW	572	1,854	9,839	4,756	1,340	7,008	2,781	1,413	242	29,805	4,750	5,051		39,359
QLD	2,005	1,155	4,776	8,419	1,427	10,826	4,794	1,272	65	34,739	3,938	8,700	1,150	43,690
SA / NT	113	419	315	552	219	605	2,073	983	155	5,434	709	660		6,843
TAS							1,335			1,335				1,335
VIC	918	4,760	8,366	8,663	1,093	7,077	3,798	1,107	38	35,820	5,399	5,436		46,624
WA	18	98	182	6,715		1,775	1,401	1,048	90	11,327	2,373	328		15,702
<b>Total</b>	<b>3,626</b>	<b>8,286</b>	<b>23,478</b>	<b>29,225</b>	<b>4,079</b>	<b>27,291</b>	<b>16,223</b>	<b>7,344</b>	<b>1,777</b>	<b>121,329</b>	<b>17,324</b>	<b>20,175</b>	<b>1,150</b>	<b>156,703</b>

### Throughput Australian avocados by destination State Throughput 1st January 2008 to date = 3,747,108 5.5kg tray eqv



### Dispatch vs weekly forecast for Australian Avocados - all varieties and all packs (5th April 2008 to 19th September 2008)



### Major Capital City Weather Report – week ahead

City	Tue	Wed	Thu	Fri	Public Hols	School Holidays
Brisbane	23°	23°	22°	21°	25th Dec - Christmas	20th Sept - 5th Oct
Sydney	20°	18°	17°	18°	4th Nov - Melb. Cup Day	20th Sept - 5th Oct
Melbourne	16°	15°	16°	17°	29th Sept - Queen's B/day	27th Sept - 13th Oct
Perth	21°	20°	20°	18°	6th Oct - Labour Day	27th Sept - 13th Oct

#### Forecast Data (Week 34-38)

Variety	Trays - Total	Bulk	P/Pk	Other	All - Total
	5.5Kg Eqv	10Kg	Kg	Kg	5.5Kg Eqv
Week 34 - begin 16/08/08					
Bacon		40			73
Fuerte	585	185			921
Gwen	250	10			268
Hass	105,948	8,985	11,400	50	124,366
Lamb Hass	60	280			569
Reed	5,000				5,000
Sharwil	620	90	1,500		1,057
Wurtz	30	10			48
<b>Week Total</b>	<b>112,493</b>	<b>9,600</b>	<b>12,900</b>	<b>50</b>	<b>132,302</b>
Week 35 - begin 23/08/08					
Fuerte	364	31			420
Gwen	250	10			268
Hass	98,995	9,560	9,700		118,141
Lamb Hass	100	250			555
Reed	3,500				3,500
Sharwil	500	90	1,500		937
Wurtz	30	10			48
<b>Week Total</b>	<b>103,739</b>	<b>9,951</b>	<b>11,200</b>		<b>123,868</b>
Week 36 - begin 30/08/08					
Fuerte	380	45			462
Gwen	250	15			277
Hass	100,931	9,582	9,700		120,117
Reed	3,400				3,400
Sharwil	860	40	1,500		1,206
Wurtz	50	10			68
<b>Week Total</b>	<b>105,871</b>	<b>9,692</b>	<b>11,200</b>		<b>125,529</b>
Week 37 - begin 06/09/08					
Fuerte	250	10			268
Hass	86,070	8,652	9,700	1,100	103,765
Reed	400				400
Sharwil	400	50	1,500		764
<b>Week Total</b>	<b>87,120</b>	<b>8,712</b>	<b>11,200</b>	<b>1,100</b>	<b>105,196</b>
Week 38 - begin 13/09/08					
Fuerte	250	10			268
Hass	69,309	5,950	9,700	1,000	82,073
Sharwil	300	30	1,500		628
<b>Week Total</b>	<b>69,859</b>	<b>5,990</b>	<b>11,200</b>	<b>1,000</b>	<b>82,968</b>

#### Dispatch Data (Week 34 - begin 16/08/08)

Variety	Trays	Bulk	P/Pk	Other	5.5Kg Eqv
	5.5kg eqv	10Kg	Kg	Kg	Total Trays
Fuerte	354	137			603
Gwen	70	2			74
Hass	112,472	14,413	18,525	1,150	142,254
Lamb Hass	2,330	555			3,339
Reed	4,803	1,920			8,294
Sharwil	1,299	239	1,650		2,034
Wurtz		58			105
<b>Total</b>	<b>121,328</b>	<b>17,324</b>	<b>20,175</b>	<b>1,150</b>	<b>156,703</b>

#### Week 34 contributors

Avowest  
 Balmoral Orchard  
 Coastal Avocados  
 Donovan Avocados  
 G & C Christensen  
 Googa Farms  
 Green Nugget Orchards  
 Green Pear Avocado  
 I & A Tolson  
 Jirel Holdings  
 Midcoast Avocados  
 Mountain Fresh  
 Mt Binga Orchards Pty Ltd  
 Natures Fruit Company  
 One Harvest  
 Simpsons Farms Pty Ltd  
 Summerland House With No Steps  
 Sunfresh  
 Sunnyspot Packhouse PL  
 Tenterfield Fruit Packers  
 The Avocado Grove  
 Touchwood Farming

#### Percentage dispatched by region (Based on seasonal forecast - 2008)

