



# INFOCADO WEEKLY REPORT

25th August to 31st August 2007 (Wk 35)

Green shading indicates dispatch data

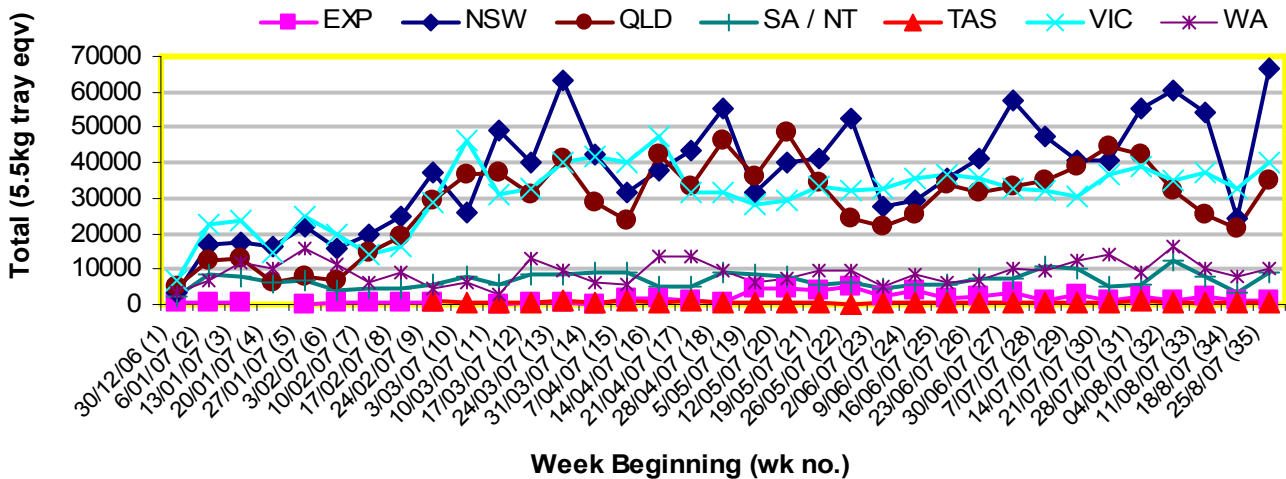
Yellow shading indicates forecast data

## Industry Dispatches 25th August to 31st August 2007 (Wk 35)

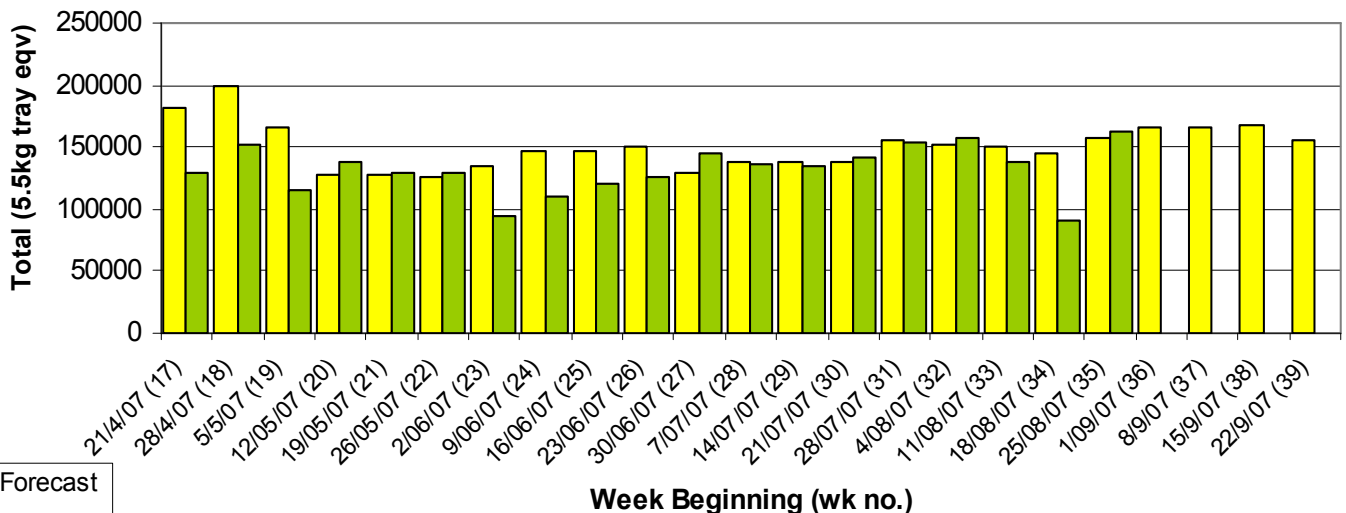
Dest. State	5.5kg	5.5kg	5.5kg	5.5kg	5.5kg	5.5kg	5.5kg	5.5kg	5.5kg	5.5kg	Bulk	P/PK	Other	5.5Kg Eqv Trays
	<16	16	18	20	22	23	25	28	28+	Total	10Kg	Kg	Kg	Total
EXP								720	440	1,160	74			1,295
NSW	86	1,455	7,333	12,675	900	10,679	11,058	1,882	483	46,551	10,133	6,292	1,401	66,374
QLD		1,584	495	1,167	889	3,158	14,855	1,852	614	24,614	4,673	11,478	350	35,261
SA / NT		3	190	611	88	584	6,280	486		8,242	455	132		9,093
TAS							720			720				720
VIC	26	1,754	7,221	12,202	89	6,040	2,687	1,497	133	31,649	4,032	6,660		40,191
WA	12	65	728	792		1,262	2,672	1,840	388	7,759	1,389	616		10,396
<b>Total</b>	<b>124</b>	<b>4,861</b>	<b>15,967</b>	<b>27,447</b>	<b>1,966</b>	<b>21,723</b>	<b>38,272</b>	<b>8,277</b>	<b>2,058</b>	<b>120,695</b>	<b>20,756</b>	<b>25,178</b>	<b>1,751</b>	<b>163,329</b>

## Throughput Australian avocados by destination State

Throughput 1st January 2007 to date = 4,054,262 5.5kg tray eqv



## Dispatch vs weekly forecast for all varieties and all packs (21st April 2007 to 29th September 2007)



### Major Capital City Weather Report – week ahead

City	Tue	Wed	Thu	Fri	Public Hols	School Holidays
<b>Brisbane</b>	22°	20°	22°	22°	December 25-26 Christmas & Boxing Days	22nd Sep-7th Oct
<b>Melbourne</b>	17°	17°	18°	19°	November 6—Melbourne Cup Day	22nd Sep-7th Oct
<b>Perth</b>	19°	17°	20°	17°	October 1—Queen's B'day	29th Sep—15th Oct
<b>Sydney</b>	16°	17°	17°	19°	October 1—Labour Day	29th Sep-14th Oct

#### Forecast Data (Week 35-39)

Variety	Trays - Total	Bulk	P/Pk	Other	All - Total
	5.5Kg Eqv	10Kg	Kg	Kg	5.5Kg Eqv
Week 35—begin 25/8/07					
Fuerte	240	119			<b>456</b>
Hass	130,356	9,062	20,400	3,500	<b>151,177</b>
Sharwil	1,800	550			<b>2,800</b>
Wurtz	1,400	600			<b>2,491</b>
<b>Week Total</b>	<b>133,796</b>	<b>10,331</b>	<b>20,400</b>	<b>3,500</b>	<b>156,925</b>
Week 36—begin 1/9/07					
Bacon	44				<b>44</b>
Fuerte	232	153			<b>510</b>
Hass	138,119	10,234	14,496	3,600	<b>160,017</b>
Sharwil	1,300	550			<b>2,300</b>
Wurtz	1,900	680			<b>3,136</b>
<b>Week Total</b>	<b>141,595</b>	<b>11,617</b>	<b>14,496</b>	<b>3,600</b>	<b>166,008</b>
Week 37—begin 8/9/07					
Fuerte	200	20			<b>236</b>
Hass	139,754	10,682	18,000	3,750	<b>163,131</b>
Sharwil	600	230			<b>1,018</b>
Wurtz	1,200	550			<b>2,200</b>
<b>Week Total</b>	<b>141,754</b>	<b>11,482</b>	<b>18,000</b>	<b>3,750</b>	<b>166,585</b>
Week 38—begin 15/9/07					
Fuerte	200	20			<b>236</b>
Hass	141,144	10,653	19,000	3,750	<b>164,650</b>
Sharwil	500	200			<b>864</b>
Wurtz	1,200	550			<b>2,200</b>
<b>Week Total</b>	<b>143,044</b>	<b>11,423</b>	<b>19,000</b>	<b>3,750</b>	<b>167,950</b>
Week 39—begin 22/9/07					
Fuerte	200	20			<b>236</b>
Hass	132,808	9,648	17,000	3,750	<b>154,123</b>
Wurtz	700	300			<b>1,245</b>
<b>Week Total</b>	<b>133,708</b>	<b>9,968</b>	<b>17,000</b>	<b>3,750</b>	<b>155,605</b>

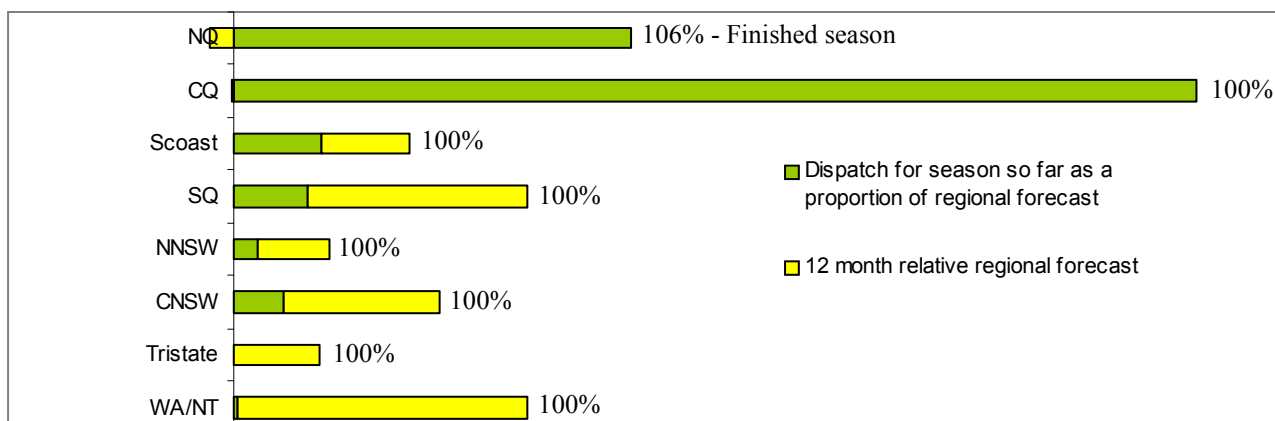
#### Dispatch Data (Week 35—begin 25/08/07)

Variety	Trays	Bulk	P/PK	Other	5.5Kg Eqv
	5.5kg eqv	10Kg	Kg	Kg	Total Trays
Bacon	44	0	0	0	<b>44</b>
Fuerte	236	173	0	0	<b>551</b>
Hass	119,203	20,083	25,178	1,751	<b>160,614</b>
Sharwil	608	224	0	0	<b>1,015</b>
Wurtz	604	208	0	0	<b>982</b>
<b>Grand</b>	<b>120695</b>	<b>20756</b>	<b>25178</b>	<b>1751</b>	<b>163,329</b>

#### Week 35 contributors

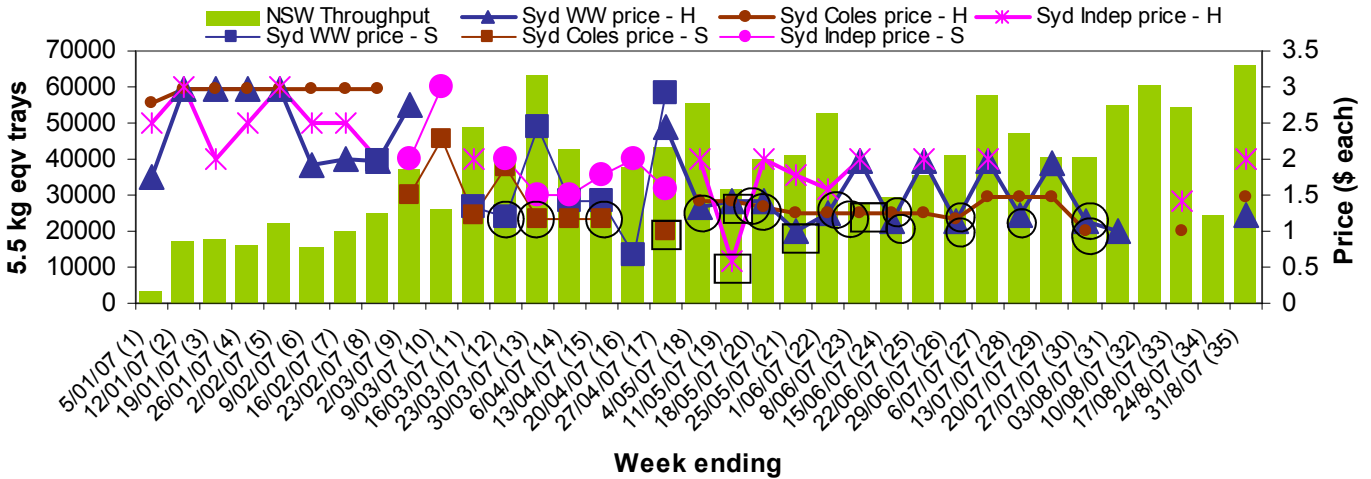
Avowest  
 Balmoral Orchard  
 BT & RG Pegg  
 C F Fechner  
 Coastal Avocados  
 Donovan Avocados  
 G & J Krenske  
 Goodlife Orchards  
 Googa Farms  
 Green Nugget Orchards  
 Green Pear Avocado  
 Green Pigeon Orchards  
 I & A Tolson  
 JC & SK Smythe  
 Merrinee Farms  
 Midcoast Avocados  
 Mt Binga Orchards Pty Ltd  
 Natures Fruit Company  
 One Harvest  
 RM & KL Cornwall  
 Rob Farnsworth Pty Ltd  
 Simpsons Farms Pty Ltd (1)  
 Summerland House With No Steps  
 Sunfresh  
 Sunnyspot Packhouse PL  
 Tenterfield Fruit Packers  
 The Avocado Grove  
 Touchwood Farming

#### Percentage dispatched by region (Based on seasonal forecast - 2007)

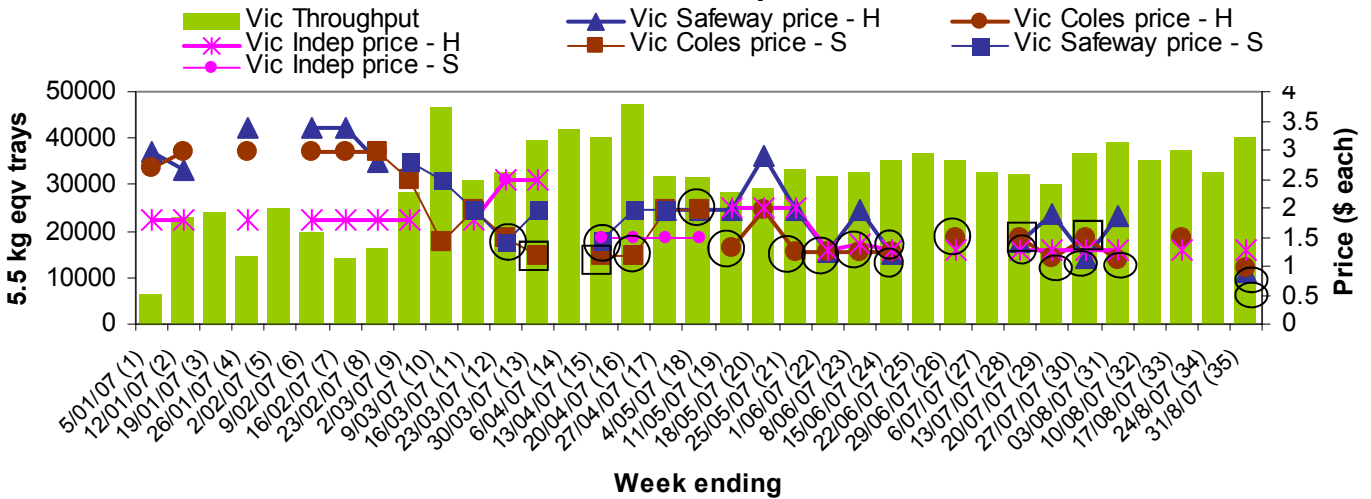


NB: H = Hass, S= Shepard, ○ = catalogue special □ = store special

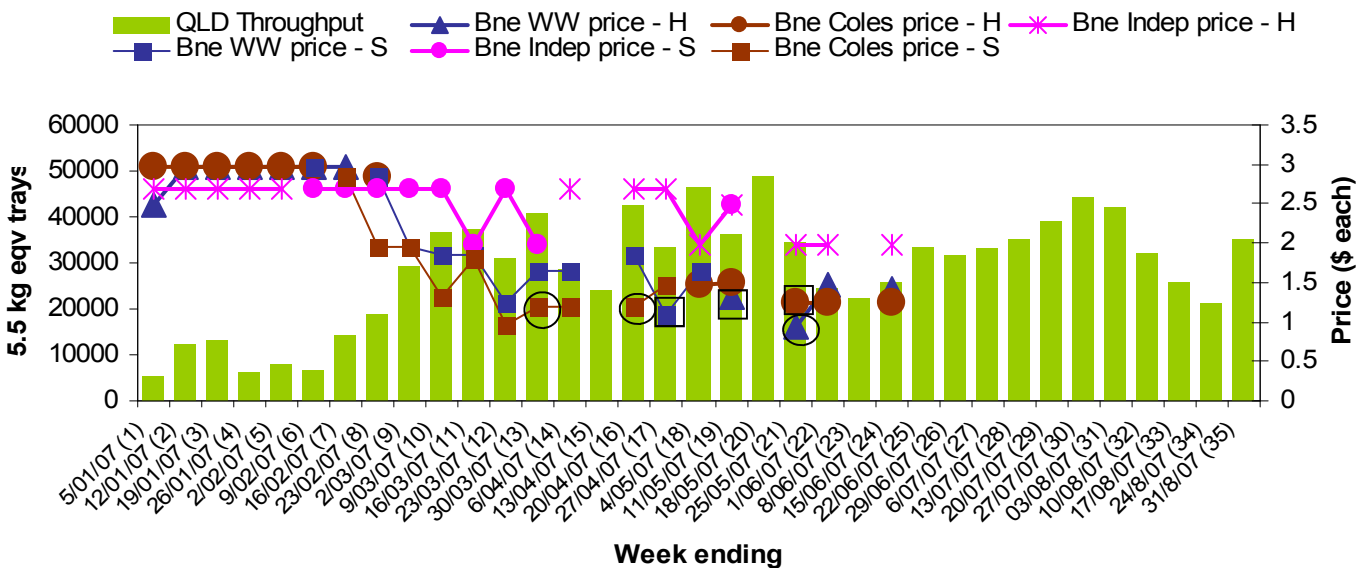
### Sydney Avocado Retail Prices vs Dispatches - Destination state NSW



### Melbourne Avocado Retail Prices vs Dispatches - Destination state Vic



### Brisbane Avocado Retail Prices vs Dispatches - Destination state Qld



For more detailed reports please go to [www.avocado.org.au](http://www.avocado.org.au) and login to Infocado. Instructions on accessing reports are available in your Infocado Information kit under 'Retrieving information'

For further assistance please contact: Joanna Embry, Ph: 07 3391 2344, Email: [infocado@avocado.org.au](mailto:infocado@avocado.org.au)