



# INFOCADO WEEKLY REPORT

23rd - 29th August 2008 (Wk 35)

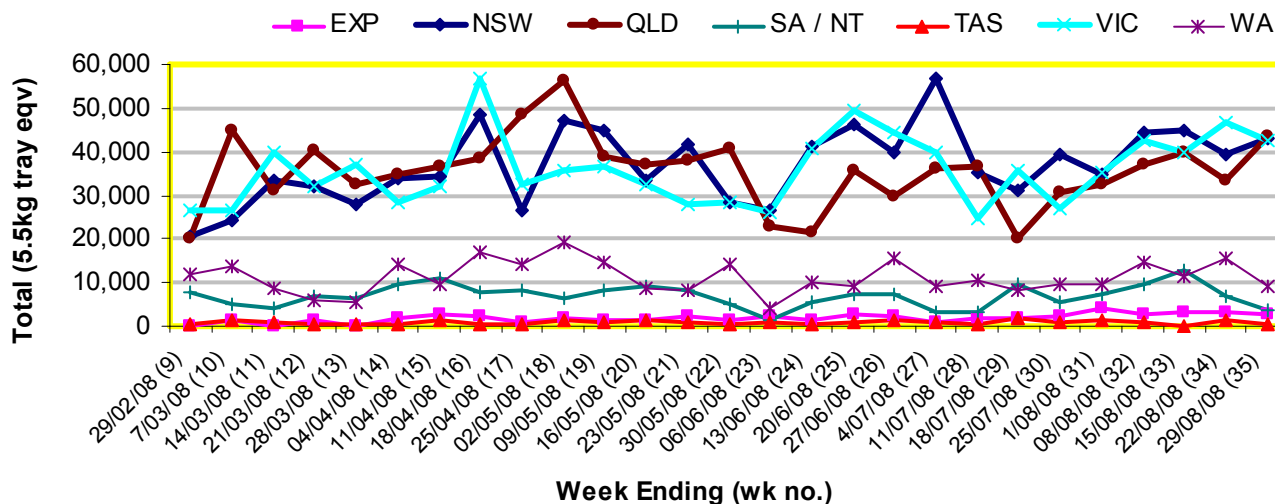
Green shading indicates dispatch data

Yellow shading indicates forecast data

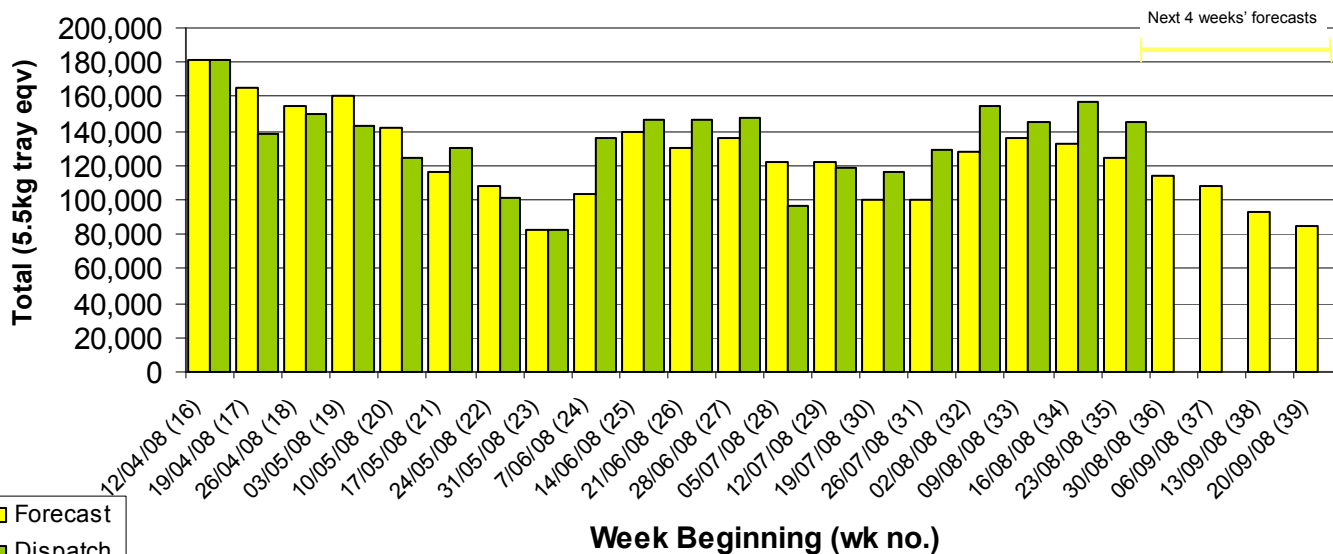
## Industry Dispatches 23rd – 29th August 2008 (Wk 35)

Dest. State	5.5kg	5.5kg	5.5kg	5.5kg	5.5kg	5.5kg	5.5kg	5.5kg	5.5kg	5.5kg	Bulk	P/PK	Other	5.5Kg Eqv	
	<16	16	18	20	22	23	25	28	28+	Total				10Kg	Kg
EXP								498	906	778	2,182	200			2,546
NSW	539	3,888	10,961	9,774	1,558	3,711	3,307	1,023	366	35,127	3,899	4,290	1,153	43,206	
QLD	1,913	3,334	4,773	8,361	1,614	7,199	4,990	1,939	1,021	35,144	3,922	4,546	952	43,275	
SA / NT	116	27	13	1,379	210	183	451	562	144	3,085	331	660		3,807	
TAS										445				445	
VIC	635	3,086	10,097	6,484	2,917	5,349	4,175	2,100	171	35,014	3,683	5,082		42,634	
WA		10	160	2,361		1,853	1,527	660		6,571	1,369			9,060	
<b>Total</b>	<b>3,203</b>	<b>10,345</b>	<b>26,004</b>	<b>28,359</b>	<b>6,299</b>	<b>18,295</b>	<b>15,393</b>	<b>7,190</b>	<b>2,480</b>	<b>117,568</b>	<b>13,404</b>	<b>14,578</b>	<b>2,105</b>	<b>144,973</b>	

### Throughput Australian avocados by destination State Throughput 1st January 2008 to date = 3,892,080 5.5kg tray eqv



### Dispatch vs weekly forecast for Australian Avocados - all varieties and all packs (12th April 2008 to 26th September 2008)



## Major Capital City Weather Report – week ahead

City	Tue	Wed	Thu	Fri	Public Hols	School Holidays
Brisbane	24°	23°	20°	19°	25th Dec - Christmas	20th Sept - 5th Oct
Sydney	20°	16°	16°	16°	4th Nov - Melb. Cup Day	20th Sept - 5th Oct
Melbourne	15°	16°	17°	17°	29th Sept - Queen's B/day	27th Sept - 13th Oct
Perth	22°	24°	24°	20°	6th Oct - Labour Day	27th Sept - 13th Oct

### Forecast Data (Week 35-39)

Variety	Trays - Total	Bulk	P/Pk	Other	All - Total
	5.5Kg Eqv	10Kg	Kg	Kg	5.5Kg Eqv
Week 35 - begin 23/08/08					
Fuerte	364	31			420
Gwen	250	10			268
Hass	98,995	9,560	9,700		118,141
Lamb Hass	100	250			555
Reed	3,500				3,500
Sharwil	500	90	1,500		937
Wurtz	30	10			48
<b>Week Total</b>	<b>103,739</b>	<b>9,951</b>	<b>11,200</b>		<b>123,868</b>
Week 36 - begin 30/08/08					
Fuerte	463	56			565
Gwen	250	15			277
Hass	90,031	7,482	9,600		105,380
Lamb Hass	100	50			191
Reed	2,400	2,000			6,036
Sharwil	950	52	1,500		1,318
Wurtz	50	10			68
<b>Week Total</b>	<b>94,244</b>	<b>9,665</b>	<b>11,100</b>		<b>113,835</b>
Week 37 - begin 06/09/08					
Fuerte	325	35			389
Gwen	50				50
Hass	85,290	8,772	9,600	1,100	103,184
Reed	3,400				3,400
Sharwil	400	50	1,500		764
Wurtz	50	10			68
<b>Week Total</b>	<b>89,515</b>	<b>8,867</b>	<b>11,100</b>	<b>1,100</b>	<b>107,855</b>
Week 38 - begin 13/09/08					
Fuerte	320	30			375
Hass	74,909	8,150	9,600	1,000	91,654
Reed	400				400
Sharwil	300	30	1,500		628
<b>Week Total</b>	<b>75,929</b>	<b>8,210</b>	<b>11,100</b>	<b>1,000</b>	<b>93,056</b>
Week 39 - begin 20/09/08					
Fuerte	250	15			277
Hass	68,650	7,470	9,600	500	84,068
Reed	300				300
Sharwil	300	20	1,500		609
<b>Week Total</b>	<b>69,500</b>	<b>7,505</b>	<b>11,100</b>	<b>500</b>	<b>85,254</b>

### Dispatch Data (Week 35 - begin 23/08/08)

Variety	Trays	Bulk	P/Pk	Other	5.5Kg Eqv
	5.5kg eqv	10Kg	Kg	Kg	Total Trays
Fuerte	358	37		151	452
Gwen	203	58			308
Hass	109,074	11,998	13,060	1,613	133,557
Lamb Hass	1,685	373			2,363
Reed	4,421	480			5,294
Sharwil	1,759	396	1,518	191	2,790
Wurtz	68	62		150	208
<b>Total</b>	<b>117,568</b>	<b>13,404</b>	<b>14,578</b>	<b>2,105</b>	<b>144,973</b>

### Week 35 contributors

#### Packhouses

Avowest  
 Balmoral Orchard  
 BT & RG Pegg  
 Coastal Avocados  
 Donovan Avocados  
 Green Nugget Orchards  
 Green Pear Avocado  
 I & A Tolson  
 Jirel Holdings  
 Midcoast Avocados  
 Mountain Fresh  
 Mt Binga Orchards P/L  
 Natures Fruit Company  
 One Harvest  
 Simpsons Farms P/L  
 Summerland HWNS  
 Sunfresh  
 Sunnyspot Packhouse  
 Tenterfield Fruit Packers  
 The Avocado Grove  
 Touchwood Farming

#### Wholesalers

Allcrops  
 Dykes Bros  
 Exotic Fruit Traders  
 Kelly's  
 La Manna Bananas  
 Mercer Mooney  
 Moraitis (Melbourne)  
 Moraitis (Sydney)  
 Murray Bros  
 Premier Fruits (Brisbane)  
 Premier Fruits (Melbourne)  
 Quality Produce International  
 Romeos Marketing  
 Ross & Co Fruit & Vegetables  
 Sculli & Co  
 The N&A Group  
 Tilbrook Marketing

### Percentage dispatched by region (Based on seasonal forecast - 2008)

