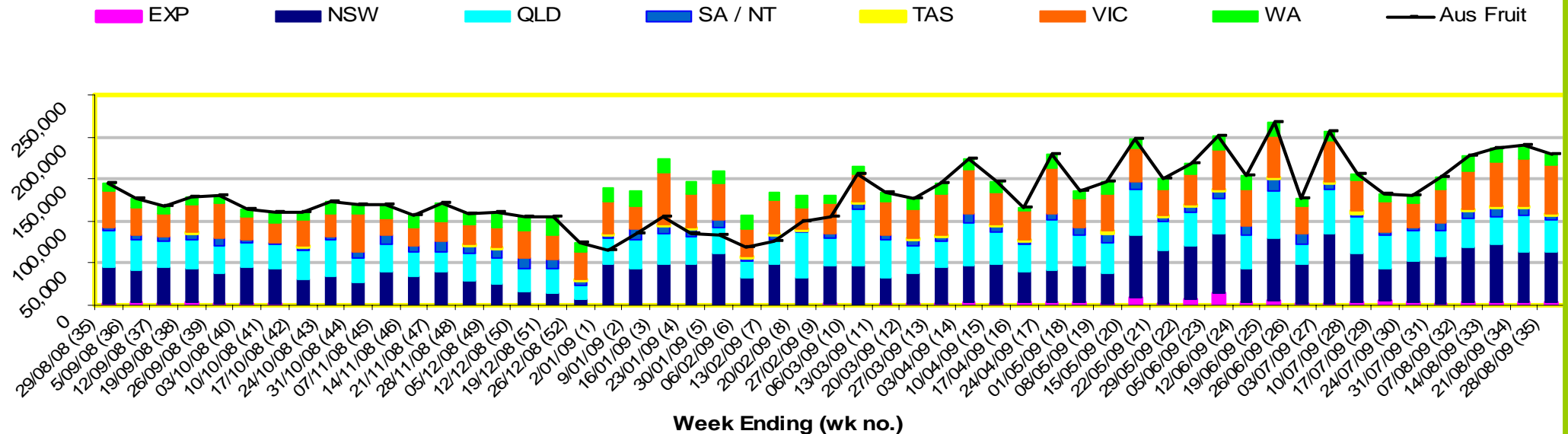


INFOCADO WEEKLY REPORT: 22nd - 28th August 2009 (Wk 35)

Industry Dispatches 22nd - 28th August 2009 (Wk 35)

Dest. State	5.5kg	5.5kg	5.5kg	5.5kg	5.5kg	5.5kg	5.5kg	5.5kg	5.5kg	5.5kg	Bulk	P/PK	Other	5.5Kg Eqv Trays All	
	<16	16	18	20	22	23	25	28	28+	Total				10Kg	Kg
EXP									2,230	1,143	3,373	528			4,333
NSW	531	2,223	8,505	11,898	3,278	7,154	3,759	1,842	449		39,639	9,701	11,817		59,426
QLD	324	100	1,009	2,187	412	13,110	8,367	2,830	578		28,917	3,689	8,324	2,348	37,564
SA / NT		11	77	156	35	652	4,191	663	12		5,797	280	132		6,330
TAS								430			430		144		456
VIC	353	3,557	15,036	12,636	843	5,227	3,877	1,521	231		43,281	7,681	5,964		58,330
WA	25	165	504	2,321		1,190	869	678	171		5,923	3,433			12,165
Total	1,233	6,056	25,131	29,198	4,568	27,333	21,493	9,764	2,584		127,360	25,312	26,381	2,348	178,606

Throughput Australian & NZ avocados by destination State Throughput 1st January 2009 to date = 5,460,323 5.5kg tray eqv

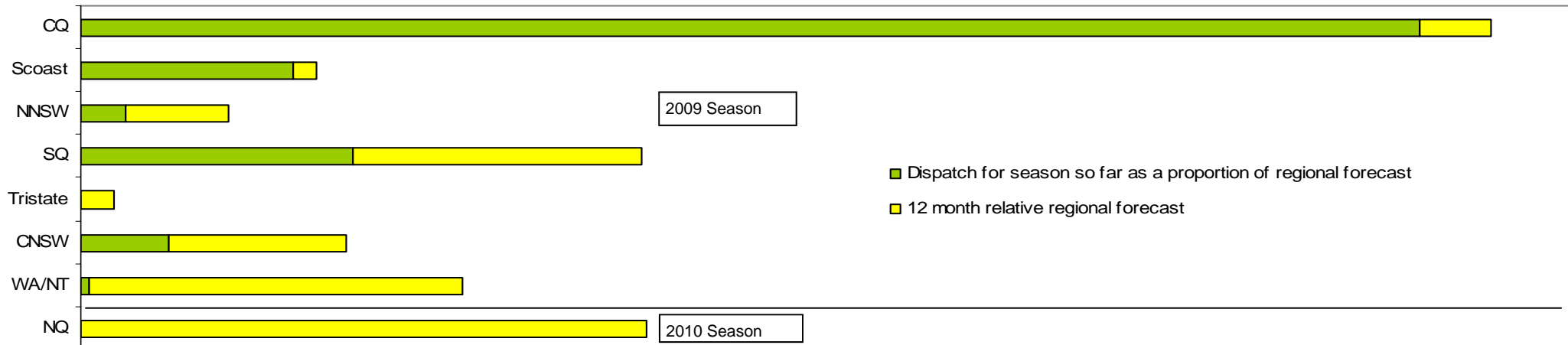


Comments from the CEO

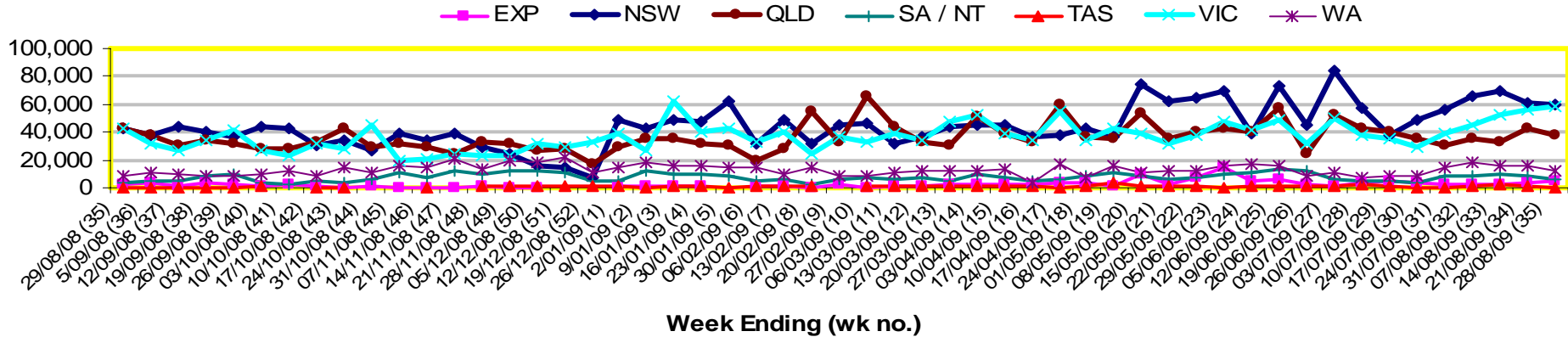
- Stock on hand is at its highest level since July.
- Avocados are on special in Sydney, Brisbane and Melbourne.
- For the fifth consecutive week, dispatches have been higher than forecast.
- Central Qld and Sunshine Coast are almost at the end of their season.



Percentage dispatched by region 2009 Season (Based on seasonal forecast - 2009)



Throughput Australian & NZ avocados by destination State
Throughput 1st January 2009 to date = 5,460,323 5.5kg tray eqv



Week 35 contributors - Packhouses

- | | |
|----------------------------------|--------------------------------|
| Avocado Industry Council (NZAGA) | Natures Fruit Company |
| Avowest | One Harvest |
| Balmoral Orchard | Perseverance Farming Co |
| Coastal Avocados | Serrata Enterprises |
| Donovan Family Investment Trust | Simpson Farms Pty Ltd |
| G & C Christensen | Summerland House With No Steps |
| Green Nugget Orchards | Sunfresh |
| Green Pear Avocado | Sunny Bluff Produce Pty Ltd |
| I & A Tolson | Sunnyspot Packhouse PL |
| Jirel Holdings | Tenterfield Fruit Packers |
| Midcoast Avocados | The Avocado Grove |
| Mountain Fresh | Touchwood Farming |
| Mt Binga Orchards Pty Ltd | |

Week 35 contributors - Wholesalers

- | | |
|-----------------------------------|---------------------------------|
| Costa Exchange Trading (Adelaide) | Sculli & Co Pty Ltd (Melbourne) |
| Dykes Bros (Melbourne) | The La Manna Group (Adelaide) |
| Etherington (Perth) | The La Manna Group (Brisbane) |
| Kelly's (Melbourne) | The La Manna Group (Melbourne) |
| Murray Bros (Brisbane) | United Fresh (Adelaide) |
| Romeos Marketing (Brisbane) | |

Sales Report including Direct Sales from Packhouses, Wholesale Sales and Stock on Hand at Wholesale Level

	Trays 5.5kg eqv (incl. Mod6 & P84)				Bulk 10kg Cartons				Pre-Pack Kg					Total (5.5kg eqv)				
	Hass	Shepard	Other	Total	Hass	Shepard	Other	Total	5.5kg eqv	Hass	Shepard	Other	Total	5.5kg eqv	Hass	Shepard	Other	Total
NSW																		
Total supermarket sales																		
Total non supermarket sales	# Data set not included because not enough NSW wholesalers contributed data this week																	
Total exports																		
Total sales																		
Total stock on hand																		
QLD																		
Total supermarket sales	18,589		267	18,856	814			814	1,480	3,038		1,914	4,952	900	20,621		615	21,236
Total non supermarket sales	14,076		39	14,115	438		1	439	798						14,872		41	14,913
Total exports	3,373			3,373	528			528	960						4,333			4,333
Total sales	36,038		306	36,344	1,780		1	1,781	3,238	3,038		1,914	4,952	900	39,826		656	40,482
Total stock on hand	48,215		127	48,342	560		11	571	1,038						49,234		147	49,381
SA & TAS																		
Total supermarket sales	5,500		42	5,542	62			62	113	333			333	61	5,673		42	5,715
Total non supermarket sales	3,003		100	3,103	820			820	1,491						4,494		100	4,594
Total exports																		
Total sales	8,503		142	8,645	882			882	1,604	333			333	61	10,167		142	10,309
Total stock on hand #	12,680		990	13,670	395			395	718	37			37	7	13,405		990	14,395
VIC																		
Total supermarket sales	22,381			22,381	2,557			2,557	4,649	5,964			5,964	1,084	28,115			28,115
Total non supermarket sales	6,376		2,022	8,398	760	768	1,123	2,651	4,820						7,758	1,396	4,064	13,218
Total exports																		
Total sales	28,757		2,022	30,779	3,317	768	1,123	5,208	9,469	5,964			5,964	1,084	35,872	1,396	4,064	41,333
Total stock on hand	7,692	1,190	3,956	12,838	3,638		3,589	7,227	13,140						14,307	1,190	10,482	25,978
WA																		
Total supermarket sales																		
Total non supermarket sales	# Full data set not included because not enough WA wholesalers contributed data this week																	
Total exports																		
Total sales	3,943		146	4,089	2,401		22	2,423	4,405						8,308		186	8,494
Total stock on hand #																		
TOTAL																		
Total supermarket sales	61,683		309	61,992	7,865			7,865	14,300	20,832		1,914	22,746	4,136	79,771		657	80,428
Total non supermarket sales	25,589		2,307	27,896	2,387	768	1,146	4,301	7,820						29,929	1,396	4,391	35,716
Total exports	3,373			3,373	528			528	960						4,333			4,333
Total sales	90,645		2,616	93,261	10,780	768	1,146	12,694	23,080	20,832		1,914	22,746	4,136	114,033	1,396	5,048	120,477
Total stock on hand	73,664	1,190	5,073	79,927	4,763		3,670	8,433	15,333	37			37	7	82,331	1,190	11,746	95,266

Weekly National Sales

