



# INFOCADO WEEKLY REPORT

## 8th September to 14th September 2007 (Wk 37)

Green shading indicates dispatch data

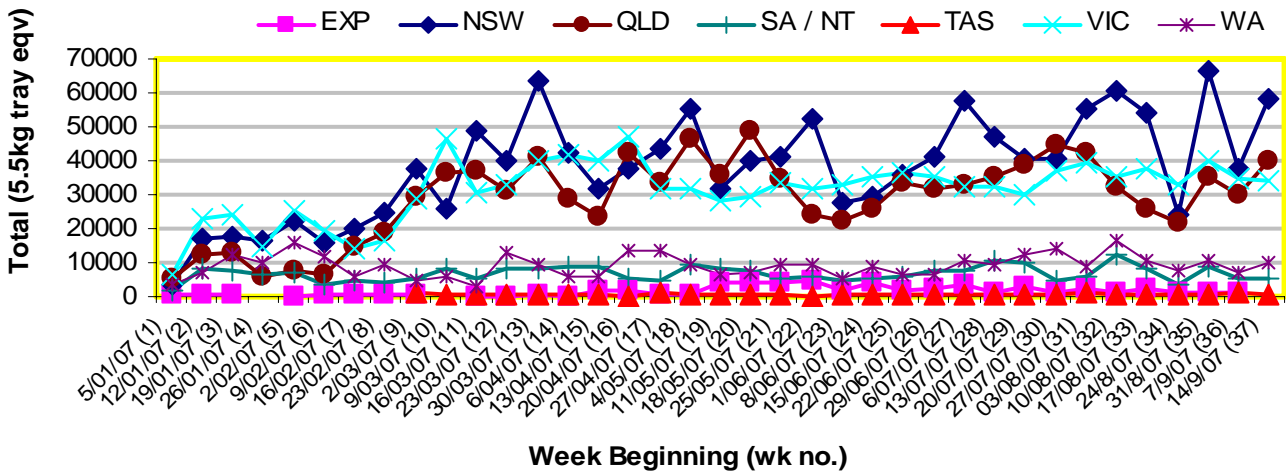
Yellow shading indicates forecast data

### Industry Dispatches 8th September to 14th September (Wk 37)

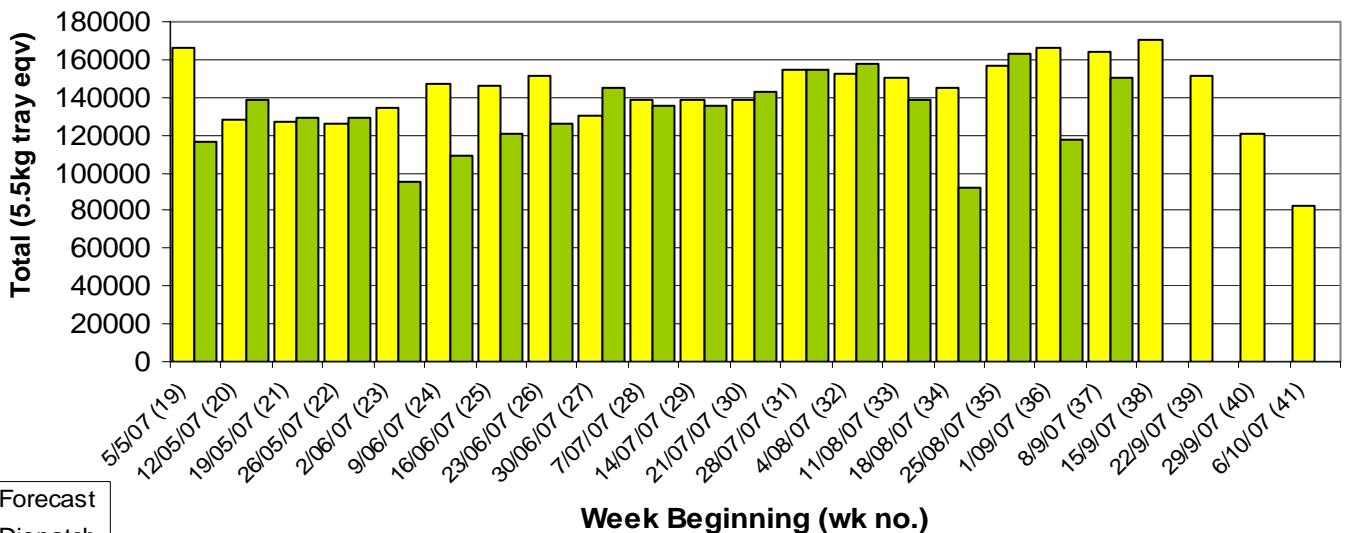
Dest. State	5.5kg	5.5kg	5.5kg	5.5kg	5.5kg	5.5kg	5.5kg	5.5kg	5.5kg	5.5kg	Bulk	P/PK	Other	5.5Kg Eqv Trays All
	<16	16	18	20	22	23	25	28	28+	Total	10Kg	Kg	Kg	Total
EXP								1,225	781	2,006	160			2,297
NSW	141	2,108	4,998	7,319	2,426	15,428	6,203	3,521	218	42,362	7,715	7,647	2,744	58,278
QLD		294	877	2,434	1,638	4,455	13,015	4,411	681	27,805	5,793	5,992	1,534	39,706
SA / NT		20	73	215	219	994	2,448	428		4,397	622	132		5,552
TAS							576			576				576
VIC	64	1,012	3,117	6,586	320	10,313	2,048	2,334	96	25,890	3,725	6,680	839	34,031
WA	11	123	330	848		1,466	2,713	858	120	6,469	2,069	176		10,263
<b>Total</b>	<b>216</b>	<b>3,557</b>	<b>9,395</b>	<b>17,402</b>	<b>4,603</b>	<b>32,656</b>	<b>27,003</b>	<b>12,777</b>	<b>1,896</b>	<b>109,505</b>	<b>20,084</b>	<b>20,627</b>	<b>5,117</b>	<b>150,701</b>

### Throughput Australian avocados by destination State

Throughput 1st January 2007 to date = 4,322,193 5.5kg tray eqv



### Dispatch vs weekly forecast for all varieties and all packs (5th May 2007 to 12th October 2007)



### Major Capital City Weather Report – week ahead

City	Tue	Wed	Thu	Fri	Public Hols	School Holidays
<b>Brisbane</b>	21°	26°	30°	25°	December 25-26 Christmas & Boxing Days	22nd Sep-7th Oct
<b>Melbourne</b>	21°	19°	17°	21°	November 6—Melbourne Cup Day	22nd Sep-7th Oct
<b>Perth</b>	18°	20°	22°	22°	October 1—Queen's B'day	29th Sep—15th Oct
<b>Sydney</b>	21°	25°	21°	24°	October 1—Labour Day	29th Sep-14th Oct

### Forecast Data (Week 37-41)

Variety	Trays - Total	Bulk	P/Pk	Other	All - Total
	5.5Kg Eqv	10Kg	Kg	Kg	5.5Kg Eqv
Week 37—begin 8/9/07					
Fuerte	209	6			220
Gwen	260	80			405
Hass	137,457	10,437	18,000	3,800	160,397
Sharwil	600	230			1,018
Wurtz	1,200	550			2,200
<b>Week Total</b>	<b>139,726</b>	<b>11,303</b>	<b>18,000</b>	<b>3,800</b>	<b>164,241</b>
Week 38—begin 15/9/07					
Fuerte	203	15			230
Gwen	500	120			718
Hass	143,965	10,029	20,000	3,750	166,518
Lamb Hass	150	160			441
Sharwil	500	200			864
Wurtz	1,200	550			2,200
<b>Week Total</b>	<b>146,518</b>	<b>11,074</b>	<b>20,000</b>	<b>3,750</b>	<b>170,971</b>
Week 39—begin 22/9/07					
Fuerte	200	20			236
Gwen	500	100			682
Hass	127,610	9,909	17,000	3,750	149,399
Lamb Hass	100	50			191
Wurtz	700	300			1,245
<b>Week Total</b>	<b>129,110</b>	<b>10,379</b>	<b>17,000</b>	<b>3,750</b>	<b>151,754</b>
Week 40—begin 29/9/07					
Fuerte	150	10			168
Hass	96,672	10,299	21,000	3,750	119,897
Lamb Hass	100	50			191
Wurtz	200	50			291
<b>Week Total</b>	<b>97,122</b>	<b>10,409</b>	<b>21,000</b>	<b>3,750</b>	<b>120,547</b>
Week 41—begin 6/10/07					
Fuerte	150	10			168
Hass	61,232	8,649	21,000	3,600	81,430
Lamb Hass	100	50			191
Wurtz	200	50			291
<b>Week Total</b>	<b>61,682</b>	<b>8,759</b>	<b>21,000</b>	<b>3,600</b>	<b>82,080</b>

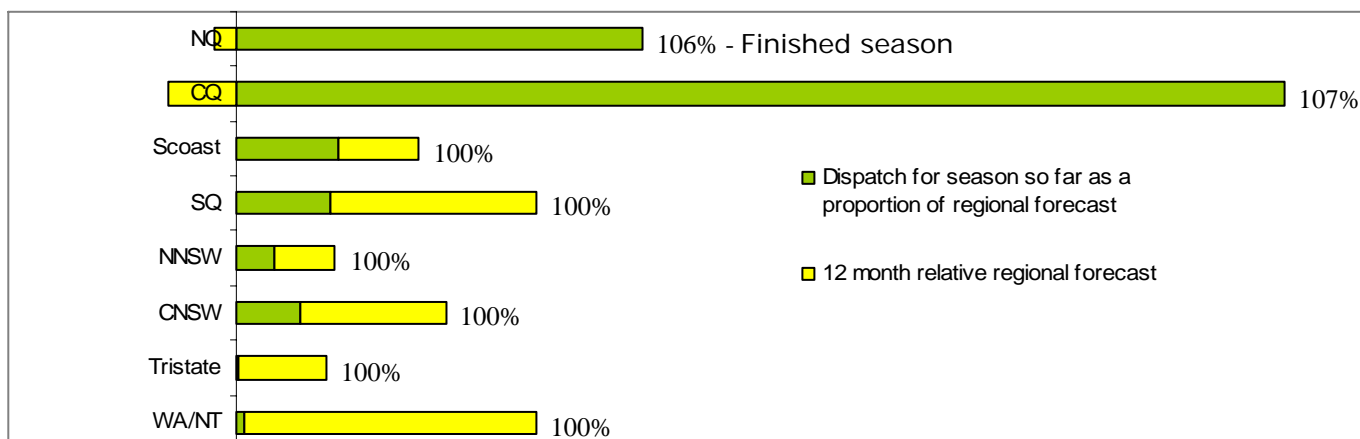
### Dispatch Data (Week 37—begin 8/9/07)

Variety	Trays	Bulk	P/PK	Other	5.5Kg Eqv
	5.5kg eqv	10Kg	Kg	Kg	Total Trays
Fuerte	203	15	0	0	230
Gwen	514	121	0	0	734
Hass	106,950	19,293	20,627	4,817	146,654
Lamb Hass	0	226	0	0	411
Pinkerton	51	10	0	300	124
Sharwil	661	202	0	0	1,028
Wurtz	1,126	217	0	0	1521
<b>Grand</b>	<b>109,505</b>	<b>20,084</b>	<b>20,627</b>	<b>5,117</b>	<b>150,701</b>

### Week 37 contributors

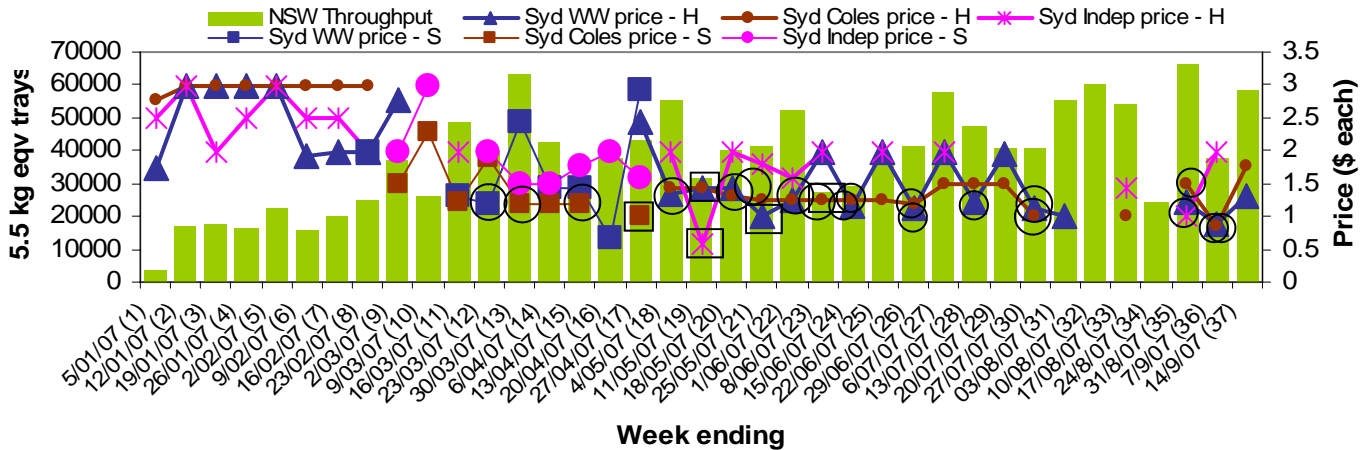
Avowest  
 Balmoral Orchard  
 Blackboy Ridge Pty Ltd  
 BT & RG Pegg  
 C F Fechner  
 Coastal Avocados  
 DJ Tottenham  
 Donovan Avocados  
 Goodlife Orchards  
 Green Nugget Orchards  
 Green Pigeon Orchards  
 I & A Tolson  
 JC & SK Smythe  
 Jirel Holdings  
 Merrinee Farms  
 Midcoast Avocados  
 Mt Binga Orchards Pty Ltd  
 Natures Fruit Company  
 One Harvest  
 RM & KL Cornwall  
 Rob Farnsworth Pty Ltd  
 Simpsons Farms Pty Ltd (1)  
 Summerland House With No Steps  
 Sunnyspot  
 Sunfresh  
 Tenterfield Fruit Packers  
 The Avocado Grove  
 Touchwood Farming

### Percentage dispatched by region (Based on seasonal forecast - 2007)

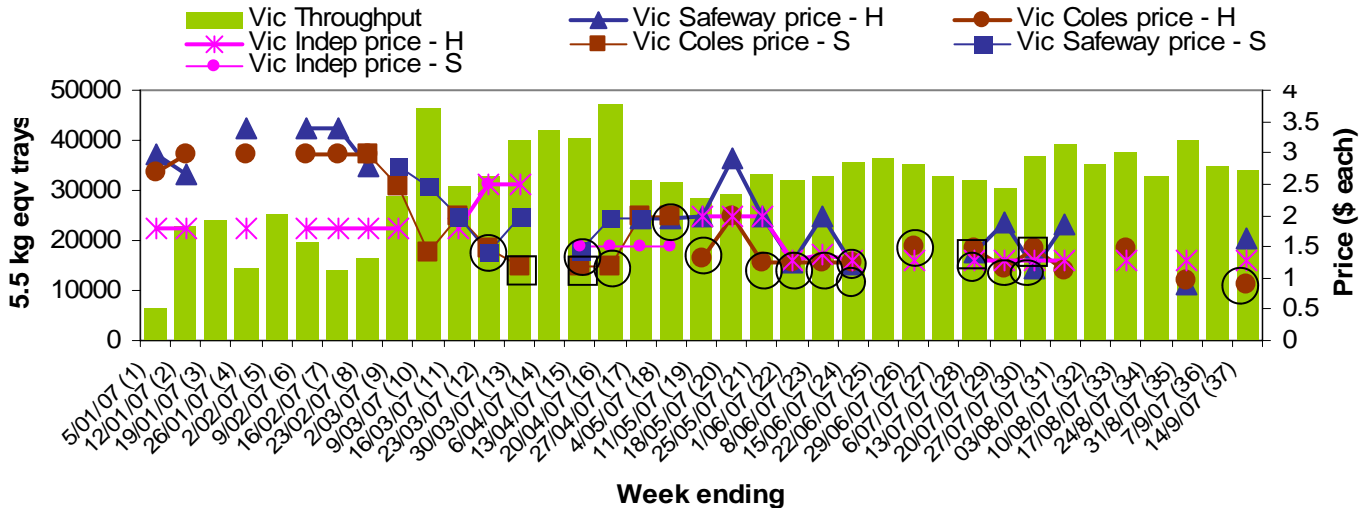


NB: H = Hass, S= Shepard, ○ = catalogue special □ = store special

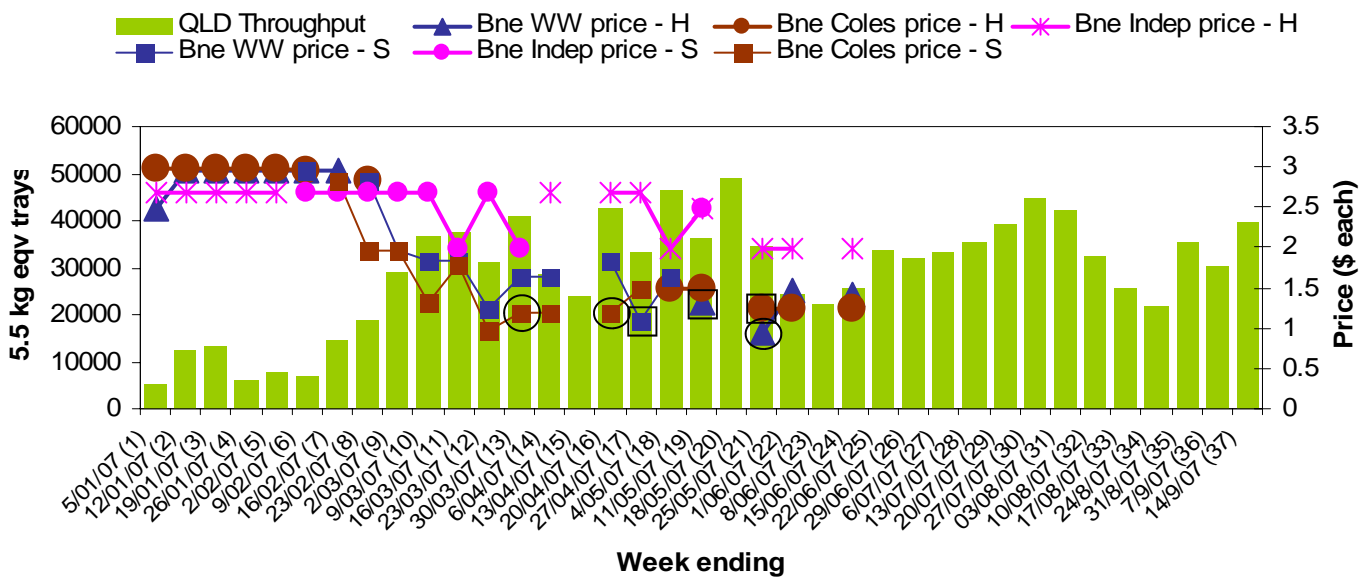
### Sydney Avocado Retail Prices vs Dispatches - Destination state NSW



### Melbourne NSW Avocado Retail Prices vs Dispatches - Destination state Vic



### Brisbane Avocado Retail Prices vs Dispatches - Destination state Qld



For more detailed reports please go to [www.avocado.org.au](http://www.avocado.org.au) and login to Infocado. Instructions on accessing reports are available in your Infocado Information kit under 'Retrieving information'

For further assistance please contact: Joanna Embry, Ph: 07 3391 2344, Email: [infocado@avocado.org.au](mailto:infocado@avocado.org.au)