



INFOCADO WEEKLY REPORT

15th September to 21st September 2007 (Wk 38)

Green shading indicates dispatch data

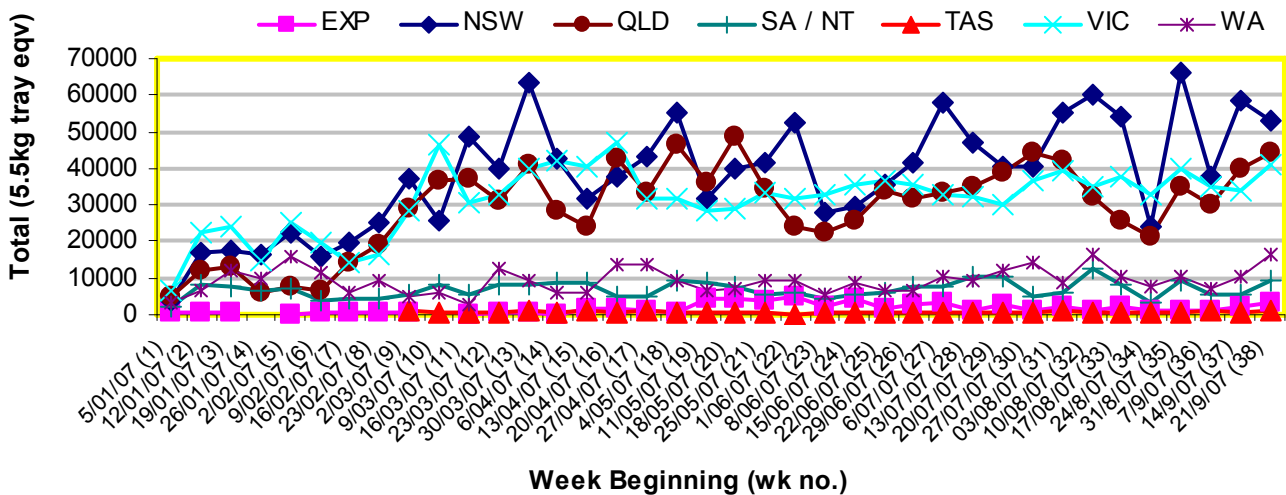
Yellow shading indicates forecast data

Industry Dispatches 15th September to 21st September (Wk 38)

Dest. State	5.5kg	5.5kg	5.5kg	5.5kg	5.5kg	5.5kg	5.5kg	5.5kg	5.5kg	5.5kg	Bulk	P/PK	Other	5.5Kg Eqv Trays All
	<16	16	18	20	22	23	25	28	28+	Total	10Kg	Kg	Kg	Total
EXP							864	1,392	672	2,928	90			3,092
NSW	58	986	4,613	8,622	2,140	8,892	7,876	3,983	318	37,488	6,173	23,577	405	53,073
QLD	18	102	1,357	869	2,495	4,860	12,658	5,631	419	28,409	6,955	17,415	1,200	44,438
SA / NT	2	32	144	235	149	2,772	3,057	917		7,308	1,130	198		9,399
TAS							864			864				864
VIC	198	611	4,345	13,581	298	8,444	2,228	1,209		30,914	4,710	6,088	1,636	40,882
WA	48	251	638	2,084		4,346	2,476	318	172	10,333	3,279	411		16,370
Total	324	1,982	11,097	25,391	5,082	29,314	30,023	13,450	1,581	118,244	22,337	47,689	3,241	168,117

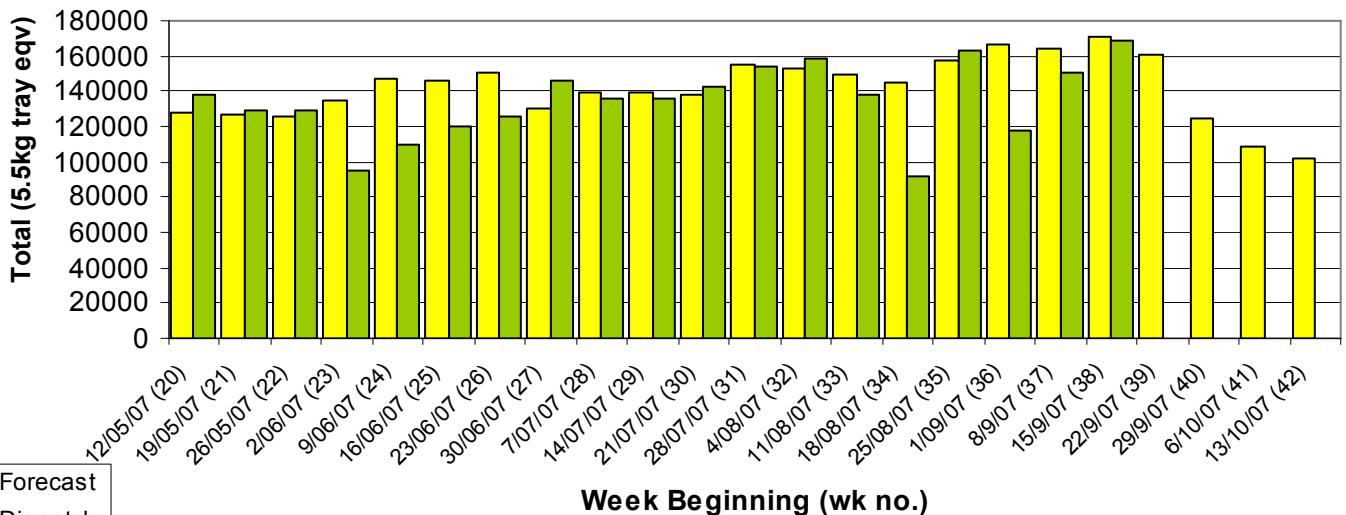
Throughput Australian avocados by destination State

Throughput 1st January 2007 to date = 4,490,310 5.5kg tray eqv



Dispatch vs weekly forecast for all varieties and all packs

(12th May 2007 to 19th October 2007)



Major Capital City Weather Report – week ahead

City	Thu	Fri	Sat	Sun	Public Hols	School Holidays
Brisbane	30°	28°	28°	26°	December 25-26 Christmas & Boxing Days	22nd Sep-7th Oct
Melbourne	20°	16°	17°	20°	November 6—Melbourne Cup Day	22nd Sep-7th Oct
Perth	20°	23°	24°	22°	October 1—Queen's B'day	29th Sep—15th Oct
Sydney	22°	26°	21°	23°	October 1—Labour Day	29th Sep-14th Oct

Forecast Data (Week 38-42)

Variety	Trays - Total	Bulk	P/Pk	Other	All - Total
	5.5Kg Eqv	10Kg	Kg	Kg	5.5Kg Eqv
Week 38—begin 15/9/07					
Fuerte	203	15			230
Gwen	500	120			718
Hass	143,965	10,029	20,000	3,750	166,518
Lamb Hass	150	160			441
Sharwil	500	200			864
Wurtz	1,200	550			2,200
Week Total	146,518	11,074	20,000	3,750	170,971
Week 39—begin 22/9/07					
Fuerte	158	12			180
Gwen	500	100			682
Hass	136,357	9,419	26,482	3,750	158,979
Lamb Hass	100	50			191
Wurtz	700	300			1,245
Week Total	137,815	9,881	26,482	3,750	161,277
Week 40—begin 29/9/07					
Fuerte	190	10			208
Hass	100,797	10,032	25,000	3,750	124,264
Lamb Hass	100	50			191
Wurtz	200	50			291
Week Total	101,287	10,142	25,000	3,750	124,954
Week 41—begin 6/10/07					
Fuerte	150	10			168
Hass	85,897	9,426	24,000	3,600	108,054
Lamb Hass	200	50			291
Wurtz	200	50			291
Week Total	86,447	9,536	24,000	3,600	108,804
Week 42—begin 13/10/07					
Hass	80,128	8,621	24,000	3,600	100,822
Lamb Hass	300	50			391
Wurtz	300	50			391
Week Total	80,728	8,721	24,000	3,600	101,603

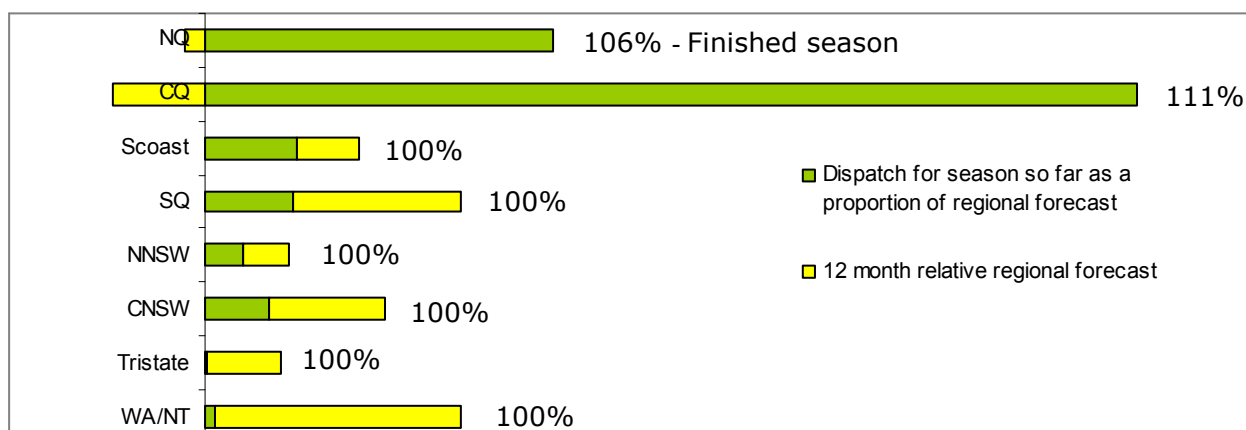
Dispatch Data (Week 38—begin 15/9/07)

Variety	Trays	Bulk	P/PK	Other	5.5Kg Eqv
	5.5kg eqv	10Kg	Kg	Kg	Total Trays
Fuerte	158	12	0	0	180
Hass	115,844	21,449	47,689	2,441	163,957
Lamb Hass	447	82	0	0	596
Pinkerton	144	0	0	800	289
Reed	164	0	0	0	164
Sharwil	439	107	0	0	634
Wurtz	1,048	687	0	0	2,297
Total	118,244	22,337	47,689	3,241	168,117

Week 38 contributors

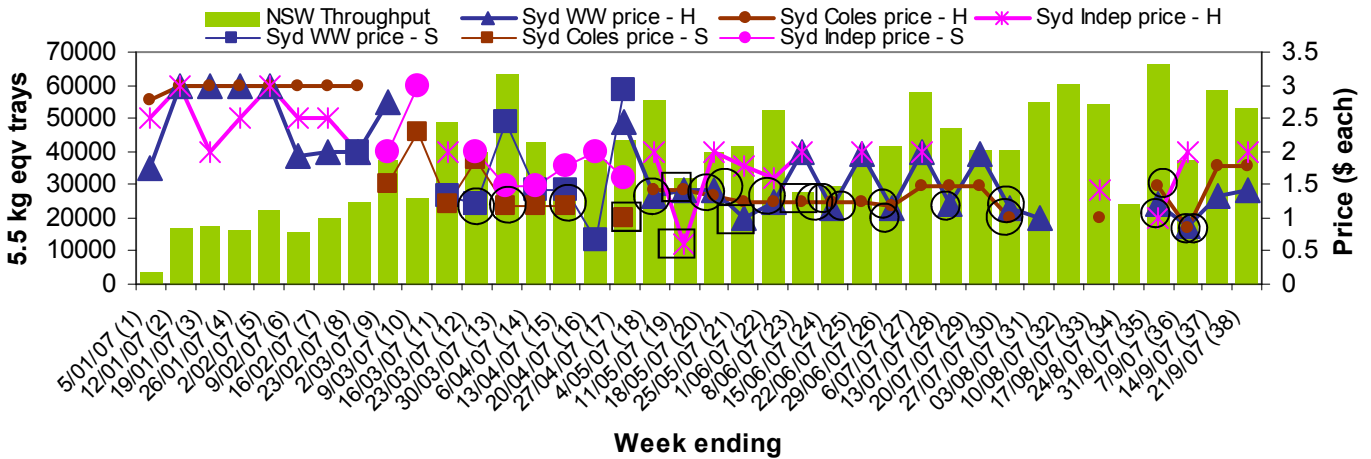
Avowest
 Balmoral Orchard
 Blackboy Ridge Pty Ltd
 BT & RG Pegg
 Chinoola Orchards
 Coastal Avocados
 DJ Tottenham
 Donovan Avocados
 Goodlife Orchards
 Googa Farms
 Green Nugget Orchards
 Green Pear Avocado
 Green Pigeon Orchards
 I & A Tolson
 JC & SK Smythe
 Jirel Holdings
 Merrinee Farms
 Midcoast Avocados
 Mt Binga Orchards Pty Ltd
 Natures Fruit Company
 One Harvest
 RG & DV Rohde
 RM & KL Cornwall
 Rob Farnsworth Pty Ltd
 Summerland House With No Steps
 Sunfresh
 Sunnyspot Packhouse PL
 Tenterfield Fruit Packers
 The Avocado Grove
 Touchwood Farming
 WJ Row

Percentage dispatched by region (Based on seasonal forecast - 2007)

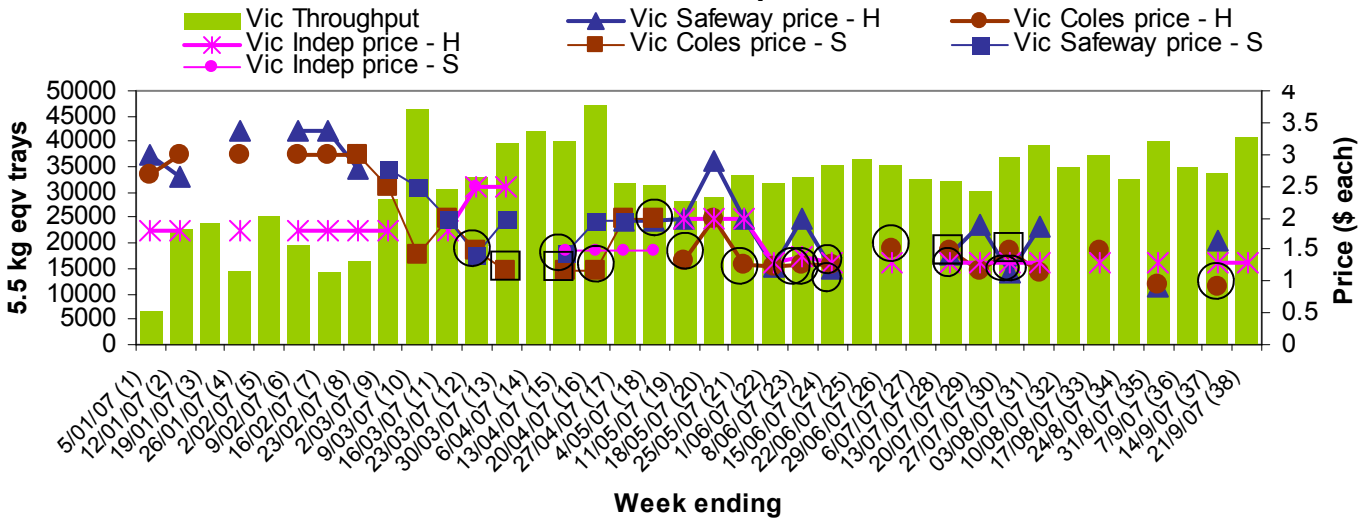


NB: H = Hass, S= Shepard, ○ = catalogue special □ = store special

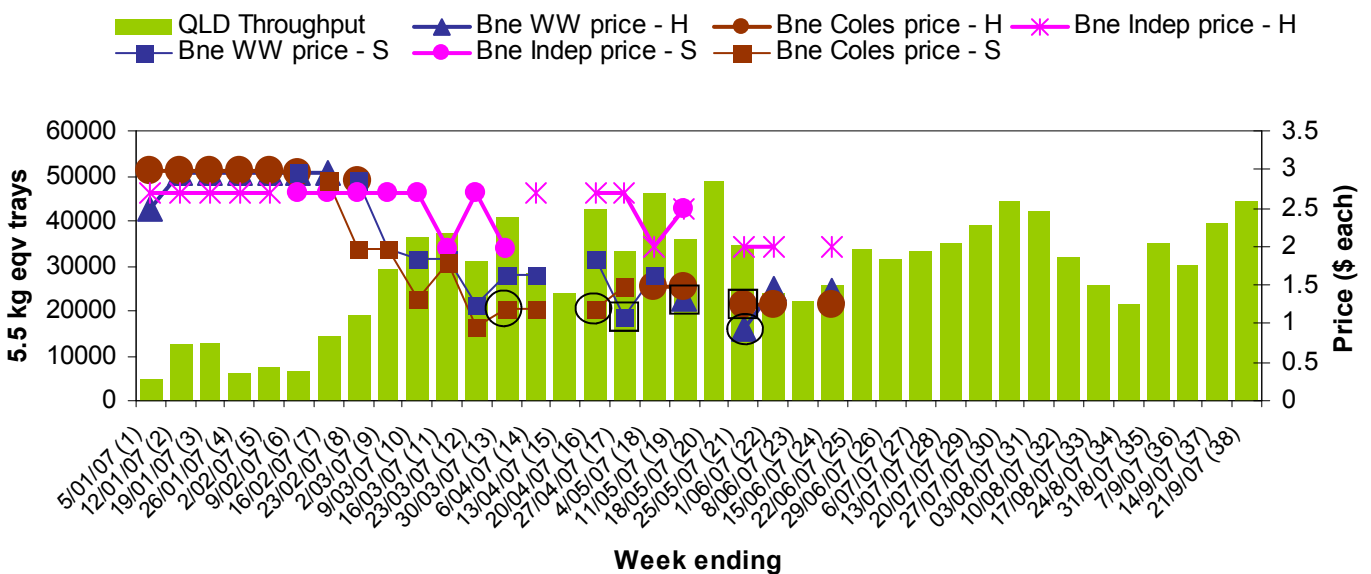
Sydney Avocado Retail Prices vs Dispatches - Destination state NSW



Melbourne Avocado Retail Prices vs Dispatches - Destination state Vic



Brisbane Avocado Retail Prices vs Dispatches - Destination state Qld



For more detailed reports please go to www.avocado.org.au and login to Infocado. Instructions on accessing reports are available in your Infocado Information kit under 'Retrieving information'

For further assistance please contact: Joanna Embry, Ph: 07 3391 2344, Email: infocado@avocado.org.au