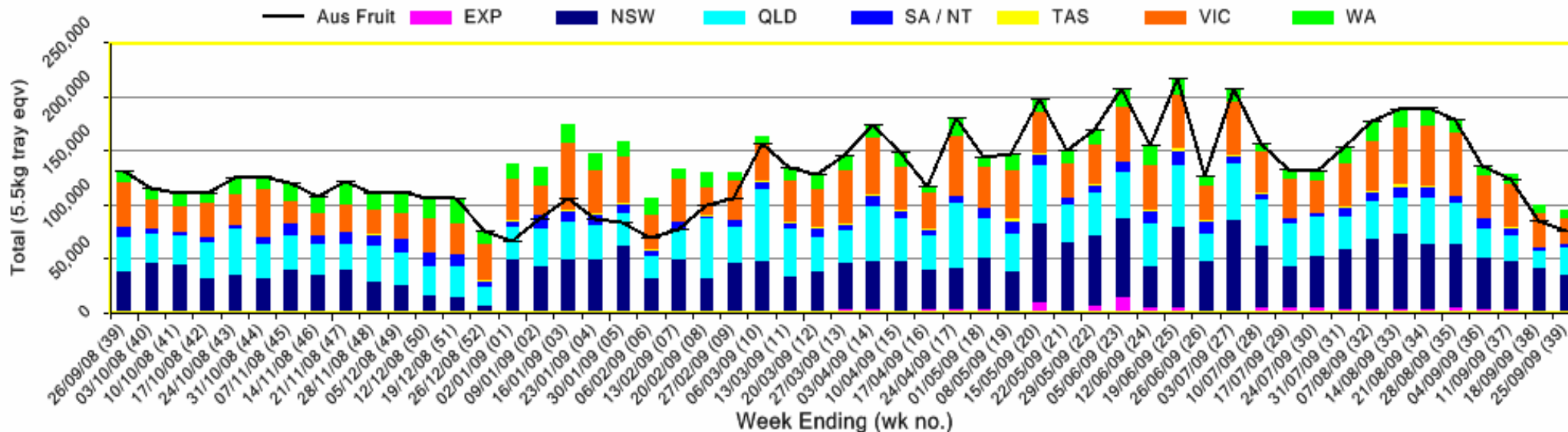


# INFOCADO WEEKLY REPORT: 19th - 25th September 2009 (Wk 39)

## Industry Dispatches 19th September - 25th September 2009 (Wk 39)

Dest. State	5.5kg	5.5kg	5.5kg	5.5kg	5.5kg	5.5kg	5.5kg	5.5kg	5.5kg	Trays - Total	Bulk	P/PK	Other	5.5Kg Eqv Trays All
	<16	16	18	20	22	23	25	28	28+	5.5Kg Eqv	10Kg	Kg	Kg	Total
EXP								585	719	1,304	228			1,719
NSW	1,252	1,702	4,644	5,914	1,631	4,154	3,963	860	1,115	25,235	4,319			33,088
QLD	328	673	2,093	4,083	1,302	3,960	5,996	1,459	1,466	21,360	2,059	2,642	574	25,688
SA / NT	83	55	80	688	57	563	544	417	135	2,622	201			2,987
TAS							267			267				267
VIC	794	1,634	5,103	4,763	773	2,465	4,257	1,000	1,337	22,126	1,129		100	24,197
WA	12	135	641	2,140		1,531	1,285	615		6,359	647			7,535
<b>Total</b>	<b>2,469</b>	<b>4,199</b>	<b>12,561</b>	<b>17,588</b>	<b>3,763</b>	<b>12,673</b>	<b>16,312</b>	<b>4,936</b>	<b>4,772</b>	<b>79,273</b>	<b>8,583</b>	<b>2,642</b>	<b>674</b>	<b>95,481</b>

Throughput Australian & NZ avocados by destination state  
Throughput 1st January 2009 to date = 5,920,196 5.5kg tray eqv



### Comments from the CEO

- The Central Queensland season is now finished and fruit volumes remain low in the market but should increase in the coming weeks with significant increases in fruit volumes expected from New Zealand.
- All states except NSW and Tasmania are currently on school holidays.
- Retail prices in NSW have increased significantly to \$2.48 each in both Coles and Woolworths stores.

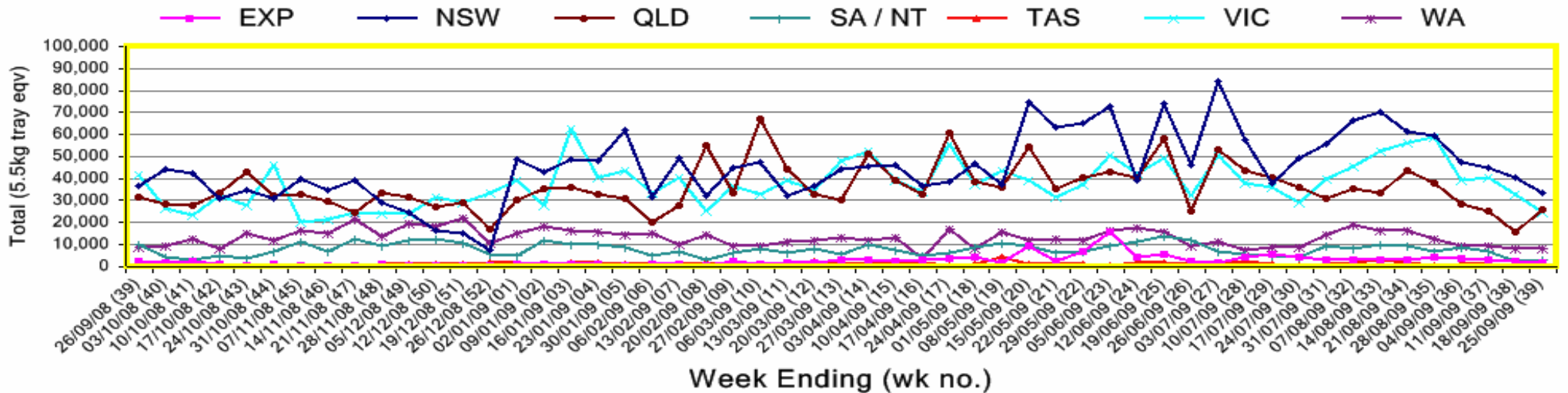




Percentage dispatched by region (Based on seasonal forecast - 2009)



Throughput Australian & NZ avocados by destination state  
Throughput 1st January 2009 to date = 5,920,196 5.5kg tray eqv



**Week 39 contributors - Packhouses**

NZ Avocado Industry Council	I & A Tolson	Serrata Enterprises
Avowest	Jirel Holdings	Summerland House With No Steps
Balmoral Orchard	Merrinee Farms	Sunfresh
Coastal Avocados	Midcoast Avocados	Sunnyspot Packhouse PL
Googa Farms	Mountain Fresh	Tenterfield Fruit Packers
Green Nugget Orchards	Natures Fruit Company	The Avocado Grove
Green Pear Avocado	Perseverance Farming Co	WJ Row

**Week 39 contributors - Wholesalers**

Costa Exchange Trading (Adelaide)	Sculli & Co Pty Ltd (Melbourne)
Dykes Bros (Melbourne)	The La Manna Group (Adelaide)
Etherington (Perth)	The La Manna Group (Brisbane)
Kelly's (Melbourne)	The La Manna Group (Melbourne)
Murray Bros (Brisbane)	United Fresh (Adelaide)
Romeos Marketing (Brisbane)	

**Sales Report including Direct Sales from Packhouses, Wholesale Sales and Stock on Hand at Wholesale Level**

	Trays 5.5kg eqv (incl. Mod6 & P84)				Bulk 10Kg Cartons					Pre-Pack Kg					Total (5.5Kg Eqv)			
	Hass	Shepard	Other	Total	Hass	Shepard	Other	Total	5.5Kg Eqv	Hass	Shepard	Other	Total	5.5Kg Eqv	Hass	Shepard	Other	Total
NSW																		
<b>Total supermarket sales</b>																		
<b>Total non supermarket sales</b>																		
<b>Total exports</b>																		
<b>Total sales</b>																		
<b>Total Stock on Hand</b>																		
QLD																		
<b>Total supermarket sales</b>	16,622		152	16,774	234		14	248	451	742			742	135	17,183		177	17,360
<b>Total non supermarket sales</b>	12,924		92	13,016	266			266	484						13,408		92	13,500
<b>Total exports</b>	1,000			1,000	228			228	415						1,415			1,415
<b>Total sales</b>	30,546		244	30,790	728		14	742	1,349	742			742	135	32,005		269	32,274
<b>Total Stock on Hand</b>	20,657		76	20,733	121			121	220						20,877		76	20,953
SA & TAS																		
<b>Total supermarket sales</b>	4,147		1,115	5,262	82			82	149	40			40	7	4,304		1,115	5,418
<b>Total non supermarket sales</b>	3,125		1,061	4,186	684			684	1,244						4,369		1,061	5,430
<b>Total exports</b>																		
<b>Total sales</b>	7,272		2,176	9,448	766			766	1,393	40			40	7	8,672		2,176	10,848
<b>Total Stock on Hand</b>	6,180		1,207	7,387	1,119			1,119	2,035	68			68	12	8,227		1,207	9,434
VIC																		
<b>Total supermarket sales</b>	10,728			10,728	186			186	338						11,066			11,066
<b>Total non supermarket sales</b>	6,291		3,030	9,321	1,883		1,129	3,012	5,476						9,714		5,083	14,797
<b>Total exports</b>																		
<b>Total sales</b>	17,018		3,030	20,049	2,069		1,129	3,198	5,815						20,780		5,083	25,863
<b>Total Stock on Hand</b>	5,746		399	6,145	3,241		3,786	7,027	12,776						11,639		7,283	18,921
WA																		
<b>Total supermarket sales</b>																		
<b>Total non supermarket sales</b>																		
<b>Total exports</b>																		
<b>Total sales</b>	3,685		33	3,718	754		31	785	1,427						5,056		89	5,145
<b>Total Stock on Hand</b>																		
Total																		
<b>Total supermarket sales</b>	39,926		1,267	41,193	594		14	608	1,105	782			782	142	41,148		1,292	42,440
<b>Total non supermarket sales</b>	25,546		4,217	29,763	3,527		1,160	4,687	8,522						31,959		6,326	38,284
<b>Total exports</b>	1,152			1,152	228			228	415						1,567			1,567
<b>Total sales</b>	66,624		5,483	72,107	4,349		1,174	5,523	10,042	782			782	142	74,673		7,618	82,291
<b>Total Stock on Hand</b>	36,866		1,709	38,575	4,562		3,804	8,366	15,211	68			68	12	45,173		8,625	53,798

