



INFOCADO WEEKLY REPORT

29th September to 5th October 2007 (Wk 40)

Green shading indicates dispatch data

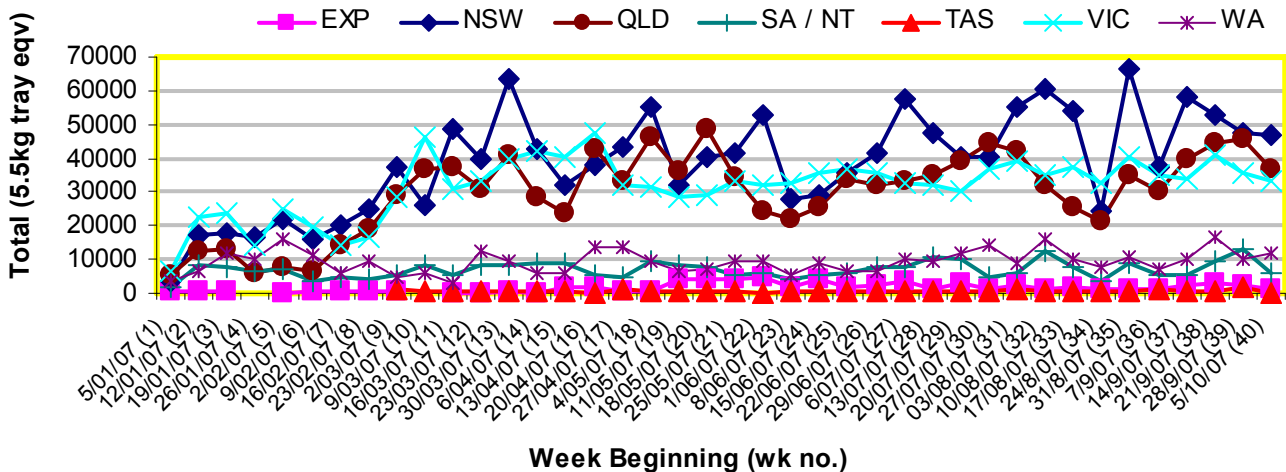
Yellow shading indicates forecast data

Industry Dispatches 29th September to 5th October (Wk 40)

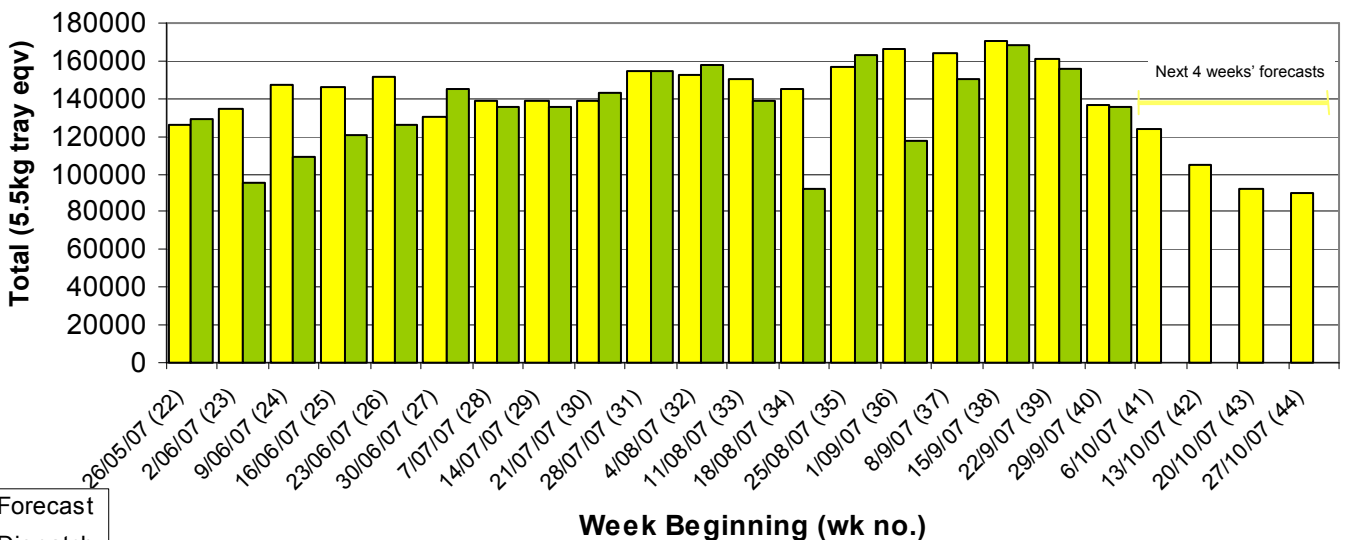
Dest. State	5.5kg	5.5kg	5.5kg	5.5kg	5.5kg	5.5kg	5.5kg	5.5kg	5.5kg	5.5kg	Bulk	P/PK	Other	5.5Kg Eqv Trays All
	<16	16	18	20	22	23	25	28	28+	Total	10Kg	Kg	Kg	Total
EXP								216	726	942	90			1,106
NSW	812	1,787	4,443	7,136	2,278	7,965	7,413	5,071	153	37,058	3,361	18,832	600	46,702
QLD	14	424	760	1,361	1,901	6,881	10,983	2,664	990	25,978	3,943	18,604	1,350	36,775
SA / NT	2	70	223	448	115	420	1,375	973	5	3,631	1,311			6,015
TAS								264		264				264
VIC	66	868	3,597	8,445	971	5,719	3,610	1,401	96	24,773	3,915	4,884	1,273	33,010
WA	1	244	1,562	2,261	113	2,471	2,181	560	94	9,487	1,125	700		11,659
Total	895	3,393	10,585	19,651	5,378	23,456	25,826	10,885	2,064	102,133	13,745	43,020	3,223	135,532

Throughput Australian avocados by destination State

Throughput 1st January 2007 to date = 4,781,776 5.5kg tray eqv



Dispatch vs weekly forecast for all varieties and all packs (26th May 2007 to 2nd November 2007)



Major Capital City Weather Report – week ahead

City	Tue	Wed	Thu	Fri	Public Hols	School Holidays
Brisbane	28°	27°	29°	34°	December 25-26 Christmas & Boxing Days	15th Dec-28th Jan
Melbourne	19°	24°	19°	15°	November 6—Melbourne Cup Day	22nd Dec-28th Jan
Perth	20°	20°	22°	24°	December 25-26 Christmas & Boxing Days	29th Sep—15th Oct
Sydney	21°	23°	27°	24°	December 25-26 Christmas & Boxing Days	29th Sep-14th Oct

Forecast Data (Week 40-44)

Variety	Trays - Total	Bulk	P/Pk	Other	All - Total
	5.5Kg Eqv	10Kg	Kg	Kg	5.5Kg Eqv
Week 40—begin 29/9/07					
Fuerte	190	10			208
Hass	107,993	11,307	36,314	3,850	135,854
Lamb Hass	100	50			191
Wurtz	200	50			291
Week Total	108,483	11,417	36,314	3,850	136,544
Week 41—begin 6/10/07					
Fuerte	150	10			168
Gwen	450	60			559
Hass	95,030	11,283	30,670	3,600	121,776
Lamb Hass	300	300			845
Wurtz	200	50			291
Week Total	96,130	11,703	30,670	3,600	123,639
Week 42—13/10/07					
Hass	79,718	10,374	29,000	3,600	104,508
Lamb Hass	300	50			391
Wurtz	300	50			391
Week Total	80,318	10,474	29,000	3,600	105,290
Week 43—20/10/07					
Gwen	250	30			305
Hass	67,994	9,606	28,000	3,850	91,250
Lamb Hass	300	50			391
Wurtz	300	100			482
Week Total	68,844	9,786	28,000	3,850	92,428
Week 44—27/10/07					
Hass	57,482	14,510	30,000	3,000	89,864
Wurtz	300	100			482
Week Total	57,782	14,610	30,000	3,000	90,346

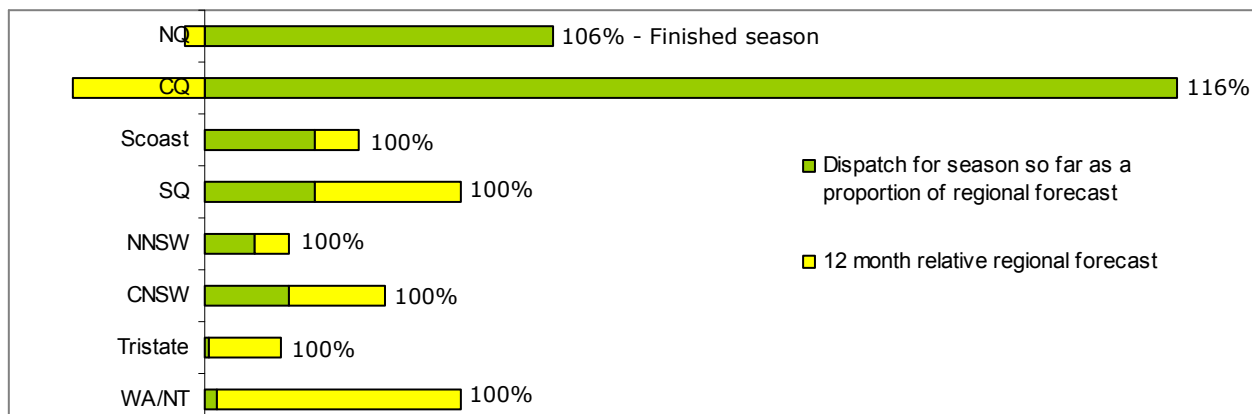
Dispatch Data (Week 40—begin 29/9/07)

Variety	Trays	Bulk	P/PK	Other	5.5Kg Eqv
	5.5kg eqv	10Kg	Kg	Kg	Total Trays
Gwen	46	293	0	0	579
Hass	97,776	12,364	43,020	2,773	128,582
Lamb Hass	2,483	488	0	0	3,370
Reed	301	64	0	450	499
Sharwil	164	9	0	0	180
Wurtz	1,363	527	0	0	2,321
Grand	102,133	13,745	43,020	3,223	135,532

Week 40 contributors

Avowest
 Balmoral Orchard
 BT & RG Pegg
 C F Fechner
 Chinoola Orchards
 Chislett Developments Pty Ltd
 Coastal Avocados
 Donovan Avocados
 Green Nugget Orchards
 Green Pear Avocado
 Green Pigeon Orchards
 I & A Tolson
 JC & SK Smythe
 Jirel Holdings
 Merrinee Farms
 Midcoast Avocados
 Mt Binga Orchards Pty Ltd
 Natures Fruit Company
 One Harvest
 Perseverance Farming Co
 Rob Farnsworth Pty Ltd
 Simpsons Farms Pty Ltd (1)
 Summerland House With No Steps
 Sunfresh
 Sunnyspot Packhouse PL
 Tenterfield Fruit Packers
 The Avocado Grove
 WJ Row

Percentage dispatched by region (Based on seasonal forecast - 2007)



NB: Recently we asked for feedback regarding the relevance and usefulness of the price data presented on the 3rd page of this weekly report. Based on that feedback, we have suspended it's inclusion in it's current form. We are investigating better, more comprehensive alternatives.