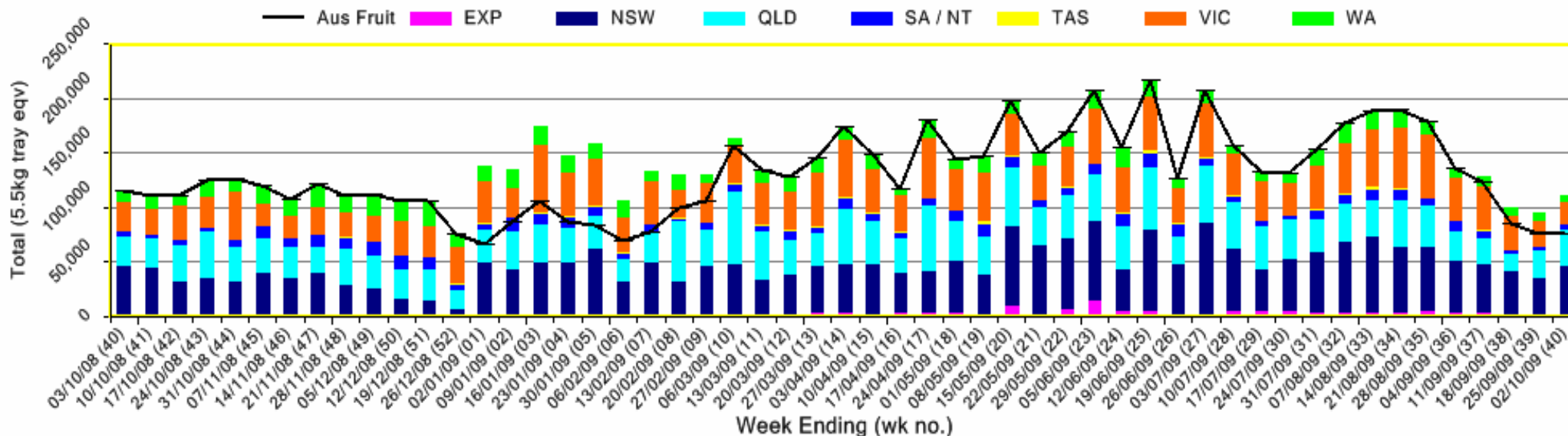


INFOCADO WEEKLY REPORT: 26th September - 2nd October 2009 (Wk 40)

| Industry Dispatches 26th September - 2nd October 2009 (Wk 40) | | | | | | | | | | | | | | |
|---|--------------|--------------|---------------|---------------|--------------|---------------|---------------|--------------|--------------|---------------|--------------|---------------|------------|----------------|
| Dest. State | 5.5kg | 5.5kg | 5.5kg | 5.5kg | 5.5kg | 5.5kg | 5.5kg | 5.5kg | 5.5kg | Trays - | Bulk | P/PK | Other | 5.5Kg Eqv |
| | <16 | 16 | 18 | 20 | 22 | 23 | 25 | 28 | 28+ | 5.5Kg Eqv | 10Kg | Kg | Kg | Total |
| EXP | | | | | | | | 940 | 684 | 1,624 | 150 | | | 1,897 |
| NSW | 692 | 2,064 | 6,669 | 7,551 | 1,810 | 4,027 | 8,165 | 1,316 | 3,049 | 35,343 | 3,338 | 12,221 | | 43,634 |
| QLD | 105 | 533 | 2,611 | 5,558 | 1,372 | 4,572 | 9,048 | 1,755 | 2,661 | 28,215 | 2,350 | 6,774 | 130 | 33,744 |
| SA / NT | | 11 | 483 | 1,583 | 68 | 1,121 | 981 | 107 | 45 | 4,399 | 235 | | | 4,826 |
| TAS | | | | | | | 134 | | | 134 | | | | 134 |
| VIC | 464 | 2,150 | 3,707 | 4,579 | 722 | 2,262 | 3,364 | 804 | 828 | 18,880 | 847 | 2,794 | | 20,928 |
| WA | 26 | 197 | 535 | 1,545 | | 1,117 | 1,141 | 719 | | 5,280 | 560 | | | 6,298 |
| Total | 1,287 | 4,955 | 14,005 | 20,816 | 3,972 | 13,099 | 22,833 | 5,641 | 7,267 | 93,875 | 7,480 | 21,789 | 130 | 111,461 |

Throughput Australian & NZ avocados by destination state
Throughput 1st January 2009 to date = 6,031,657 5.5kg tray eqv

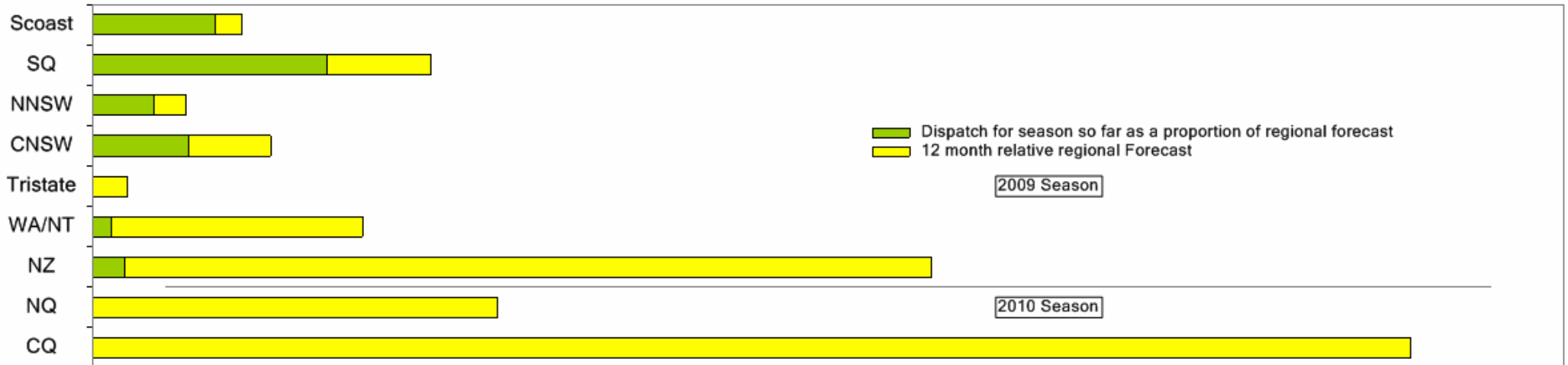


Comments from the CEO

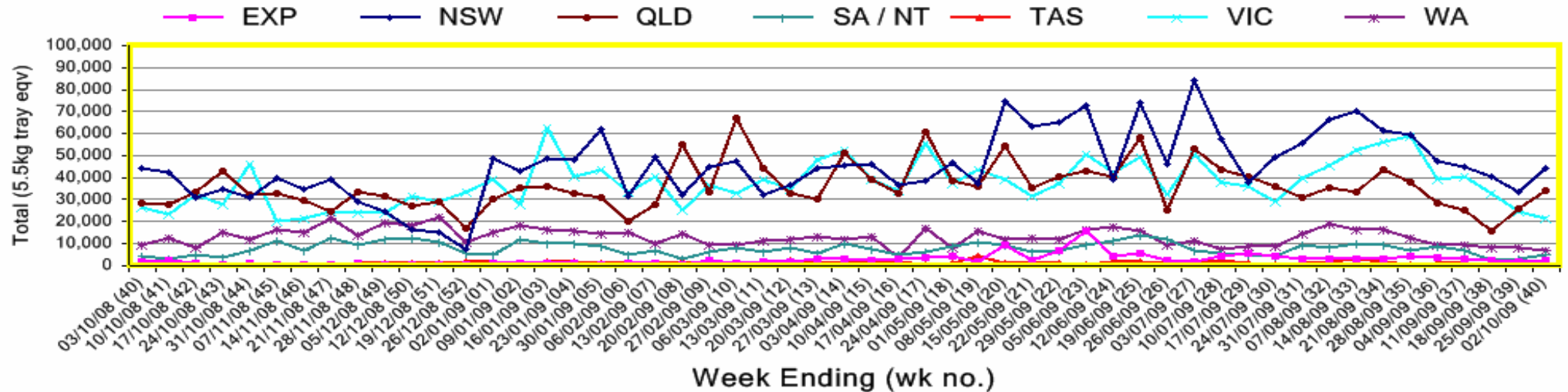
- Dispatches were lower than forecast last week mainly as a result of New Zealand dispatches being lower than forecast.
- School holidays have now finished in Queensland and Victoria but are still going in New South Wales, South Australia, ACT and Western Australia.
- As of next week the retail price reporting will be changing to include more detailed reporting.



Percentage dispatched by region (Based on seasonal forecast - 2009)



Throughput Australian & NZ avocados by destination state
Throughput 1st January 2009 to date = 6,031,657 5.5kg tray eqv



Week 40 contributors - Packhouses

| | | |
|-----------------------------|-------------------------|--------------------------------|
| NZ Avocado Industry Council | I & A Tolson | Serrata Enterprises |
| Avowest | Jirel Holdings | Summerland House With No Steps |
| Balmoral Orchard | Midcoast Avocados | Sunfresh |
| Coastal Avocados | Mountain Fresh | Sunnyspot Packhouse PL |
| Googa Farms | Natures Fruit Company | Tenterfield Fruit Packers |
| Green Nugget Orchards | One Harvest | The Avocado Grove |
| Green Pear Avocado | Perseverance Farming Co | |

Week 40 contributors - Wholesalers

| | |
|-----------------------------|---------------------------------|
| Costa Exchange | Sculli & Co Pty Ltd (Melbourne) |
| Dykes Bros (Melbourne) | The La Manna Group (Adelaide) |
| Etherington (Perth) | The La Manna Group (Brisbane) |
| Kelly's (Melbourne) | The La Manna Group (Melbourne) |
| Murray Bros (Brisbane) | United Fresh (Adelaide) |
| Romeos Marketing (Brisbane) | |

Sales Report including Direct Sales from Packhouses, Wholesale Sales and Stock on Hand at Wholesale Level

| | Trays 5.5kg eqv (incl. Mod6 & P84) | | | | Bulk 10Kg Cartons | | | | | Pre-Pack Kg | | | | | Total (5.5Kg Eqv) | | | |
|------------------------------------|---|---------|-------|--------|-------------------|---------|-------|-------|-----------|-------------|---------|-------|--------|-----------|-------------------|---------|-------|--------|
| | Hass | Shepard | Other | Total | Hass | Shepard | Other | Total | 5.5Kg Eqv | Hass | Shepard | Other | Total | 5.5Kg Eqv | Hass | Shepard | Other | Total |
| NSW | | | | | | | | | | | | | | | | | | |
| Total supermarket sales | | | | | | | | | | | | | | | | | | |
| Total non supermarket sales | # Data set not included because not enough NSW wholesalers contributed data this week | | | | | | | | | | | | | | | | | |
| Total exports | | | | | | | | | | | | | | | | | | |
| Total sales | | | | | | | | | | | | | | | | | | |
| Total Stock on Hand | | | | | | | | | | | | | | | | | | |
| QLD | | | | | | | | | | | | | | | | | | |
| Total supermarket sales | 17,435 | | 1,157 | 18,592 | 209 | | 106 | 315 | 573 | 4,527 | | 1,287 | 5,814 | 1,057 | 18,638 | | 1,584 | 20,222 |
| Total non supermarket sales | 14,907 | | 76 | 14,983 | 90 | | | 90 | 164 | | | | | | 15,071 | | 76 | 15,147 |
| Total exports | 1,320 | | | 1,320 | 150 | | | 150 | 273 | | | | | | 1,593 | | | 1,593 |
| Total sales | 33,662 | | 1,233 | 34,895 | 449 | | 106 | 555 | 1,009 | 4,527 | | 1,287 | 5,814 | 1,057 | 35,301 | | 1,660 | 36,961 |
| Total Stock on Hand | 16,954 | | | 16,954 | 33 | | | 33 | 60 | | | | | | 17,014 | | | 17,014 |
| SA & TAS | | | | | | | | | | | | | | | | | | |
| Total supermarket sales | 5,087 | | | 5,087 | 85 | | | 85 | 155 | 15 | | | 15 | 3 | 5,245 | | | 5,245 |
| Total non supermarket sales | 3,779 | | 559 | 4,338 | 723 | | | 723 | 1,315 | | | | | | 5,094 | | 559 | 5,653 |
| Total exports | | | | | | | | | | | | | | | | | | |
| Total sales | 8,866 | | 559 | 9,425 | 808 | | | 808 | 1,469 | 15 | | | 15 | 3 | 10,338 | | 559 | 10,897 |
| Total Stock on Hand | 6,821 | | 662 | 7,483 | 1,039 | | | 1,039 | 1,889 | 53 | | | 53 | 10 | 8,720 | | 662 | 9,382 |
| VIC | | | | | | | | | | | | | | | | | | |
| Total supermarket sales | 1,090 | | 537 | 1,626 | 320 | | | 320 | 582 | 2,794 | | | 2,794 | 508 | 2,180 | | 537 | 2,716 |
| Total non supermarket sales | 6,431 | | 559 | 6,990 | 1,729 | | 611 | 2,340 | 4,255 | | | | | | 9,575 | | 1,670 | 11,245 |
| Total exports | | | | | | | | | | | | | | | | | | |
| Total sales | 7,521 | | 1,096 | 8,617 | 2,049 | | 611 | 2,660 | 4,836 | 2,794 | | | 2,794 | 508 | 11,755 | | 2,206 | 13,961 |
| Total Stock on Hand | 6,311 | | 628 | 6,939 | 2,653 | | 3,176 | 5,829 | 10,598 | | | | | | 11,135 | | 6,403 | 17,537 |
| WA | | | | | | | | | | | | | | | | | | |
| Total supermarket sales | | | | | | | | | | | | | | | | | | |
| Total non supermarket sales | | | | | | | | | | | | | | | | | | |
| Total exports | | | | | | | | | | | | | | | | | | |
| Total sales | 4,659 | | 27 | 4,686 | 632 | | 9 | 641 | 1,165 | | | | | | 5,808 | | 43 | 5,852 |
| Total Stock on Hand | | | | | | | | | | | | | | | | | | |
| Total | | | | | | | | | | | | | | | | | | |
| Total supermarket sales | 37,307 | | 1,694 | 39,001 | 660 | | 106 | 766 | 1,393 | 19,557 | | 1,287 | 20,844 | 3,790 | 42,063 | | 2,120 | 44,184 |
| Total non supermarket sales | 28,985 | | 1,221 | 30,206 | 3,174 | | 620 | 3,794 | 6,898 | | | | | | 34,756 | | 2,348 | 37,105 |
| Total exports | 1,624 | | | 1,624 | 150 | | | 150 | 273 | | | | | | 1,897 | | | 1,897 |
| Total sales | 67,917 | | 2,915 | 70,832 | 3,984 | | 726 | 4,710 | 8,564 | 19,557 | | 1,287 | 20,844 | 3,790 | 78,716 | | 4,469 | 83,185 |
| Total Stock on Hand | 35,213 | | 1,290 | 36,503 | 3,790 | | 3,185 | 6,975 | 12,682 | 53 | | | 53 | 10 | 42,114 | | 7,081 | 49,194 |

