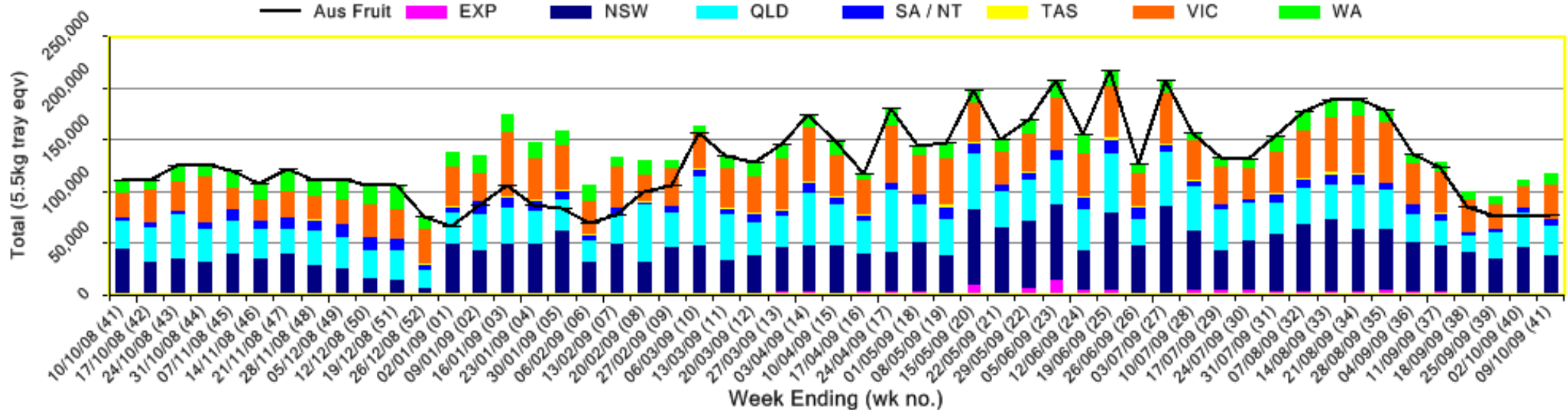


INFOCADO WEEKLY REPORT: 3rd - 9th October 2009 (Wk 41)

Industry Dispatches 3rd October - 9th October 2009 (Wk 41)

Dest. State	5.5kg	5.5kg	5.5kg	5.5kg	5.5kg	5.5kg	5.5kg	5.5kg	5.5kg	Trays - Total	Bulk	P/PK	Other	5.5Kg Eqv
	<16	16	18	20	22	23	25	28	28+	5.5Kg Eqv	10Kg	Kg	Kg	Total
EXP								1,086	463	1,549	150			1,822
NSW	208	1,266	4,000	6,479	1,377	3,554	8,568	1,079	3,311	29,842	2,334	9,829		35,873
QLD	44	382	2,732	5,373	1,508	4,175	6,884	1,661	1,407	24,166	2,119	5,666	2,393	29,484
SA / NT	246	136	482	494	36	1,486	1,395	220	30	4,525	532			5,492
TAS		14	44	108		60	212	20	91	549				549
VIC	270	2,571	6,025	6,117	623	3,832	7,145	1,325	2,536	30,444	1,291	1,815		33,121
WA	19	202	731	3,280		2,572	1,820	1,466		10,090	903			11,732
Total	787	4,571	14,014	21,851	3,544	15,679	26,024	6,857	7,838	101,165	7,329	17,310	2,393	118,072

Throughput Australian & NZ avocados by destination state
Throughput 1st January 2009 to date = 6,149,730 5.5kg tray eqv

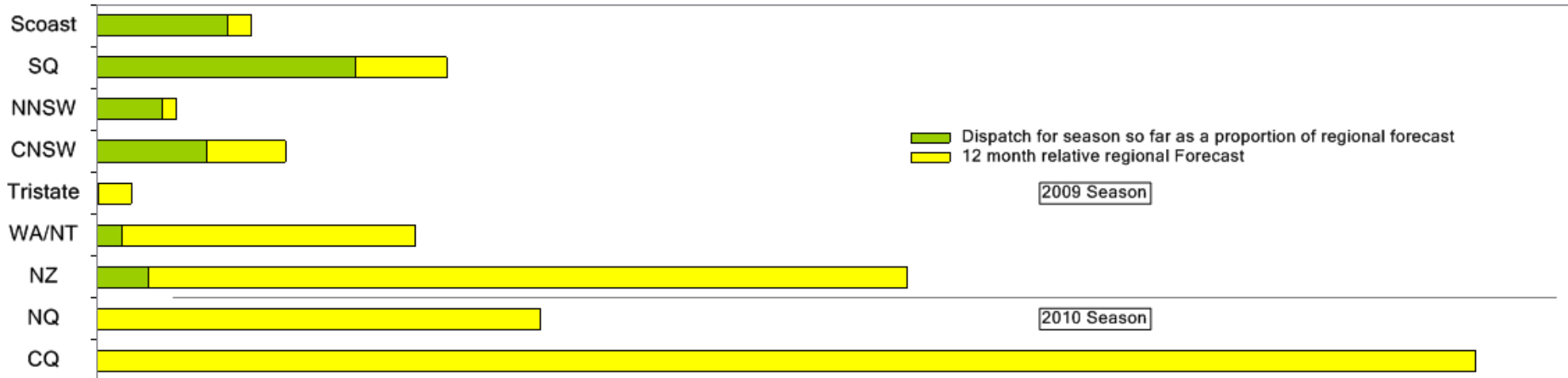


Comments from the CEO

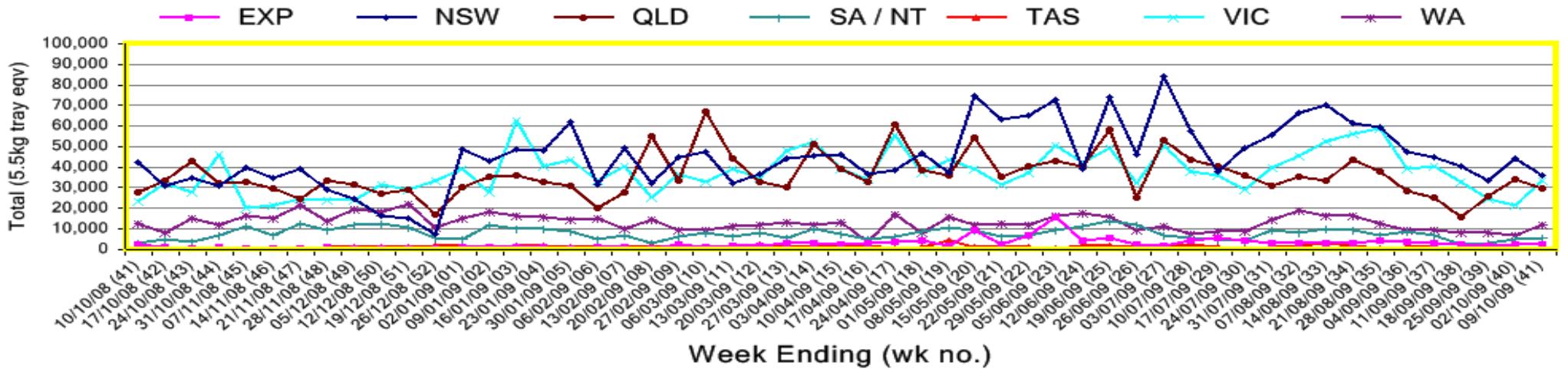
- Please note that September Dry Matter results are attached to this week's report.
- New Zealand Dispatches were again lower than was forecast for last week.



Percentage dispatched by region (Based on seasonal forecast - 2009)



Throughput Australian & NZ avocados by destination state
Throughput 1st January 2009 to date = 6,149,730 5.5kg tray eqv



Week 41 contributors - Packhouses

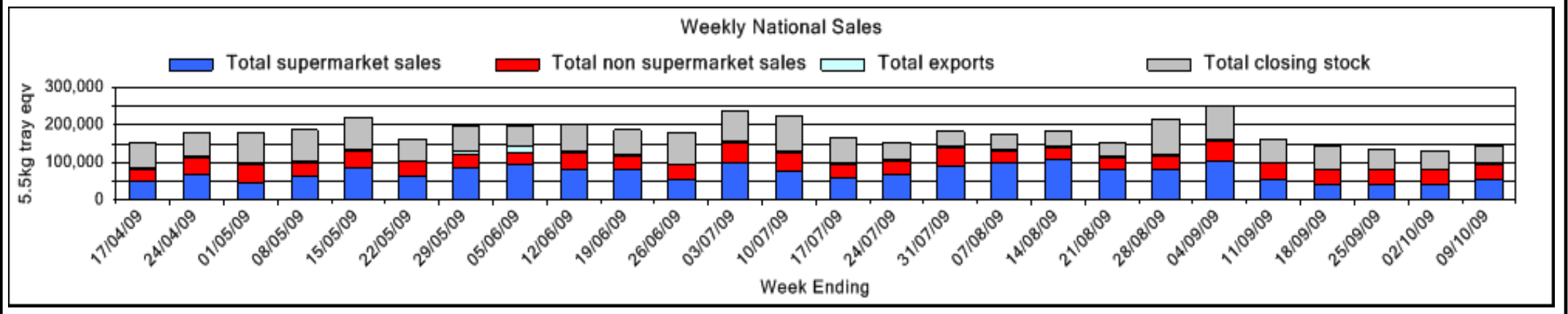
- | | |
|----------------------------------|---------------------------|
| Avocado Industry Council (NZAGA) | I & A Tolson |
| Avonova | Merrinee Farms |
| Avowest | Midcoast Avocados |
| Balmoral Orchard | Mt Binga Orchards Pty Ltd |
| C F Fechner | Natures Fruit Company |
| Chinoola Orchards | One Harvest |
| Chislett Developments Pty Ltd | Perseverance Farming Co |
| Coastal Avocados | Serrata Enterprises |
| G & C Christensen | Sunfresh |
| Googa Farms | Sunnyspot Packhouse PL |
| Green Nugget Orchards | The Avocado Grove |
| Green Pear Avocado | |

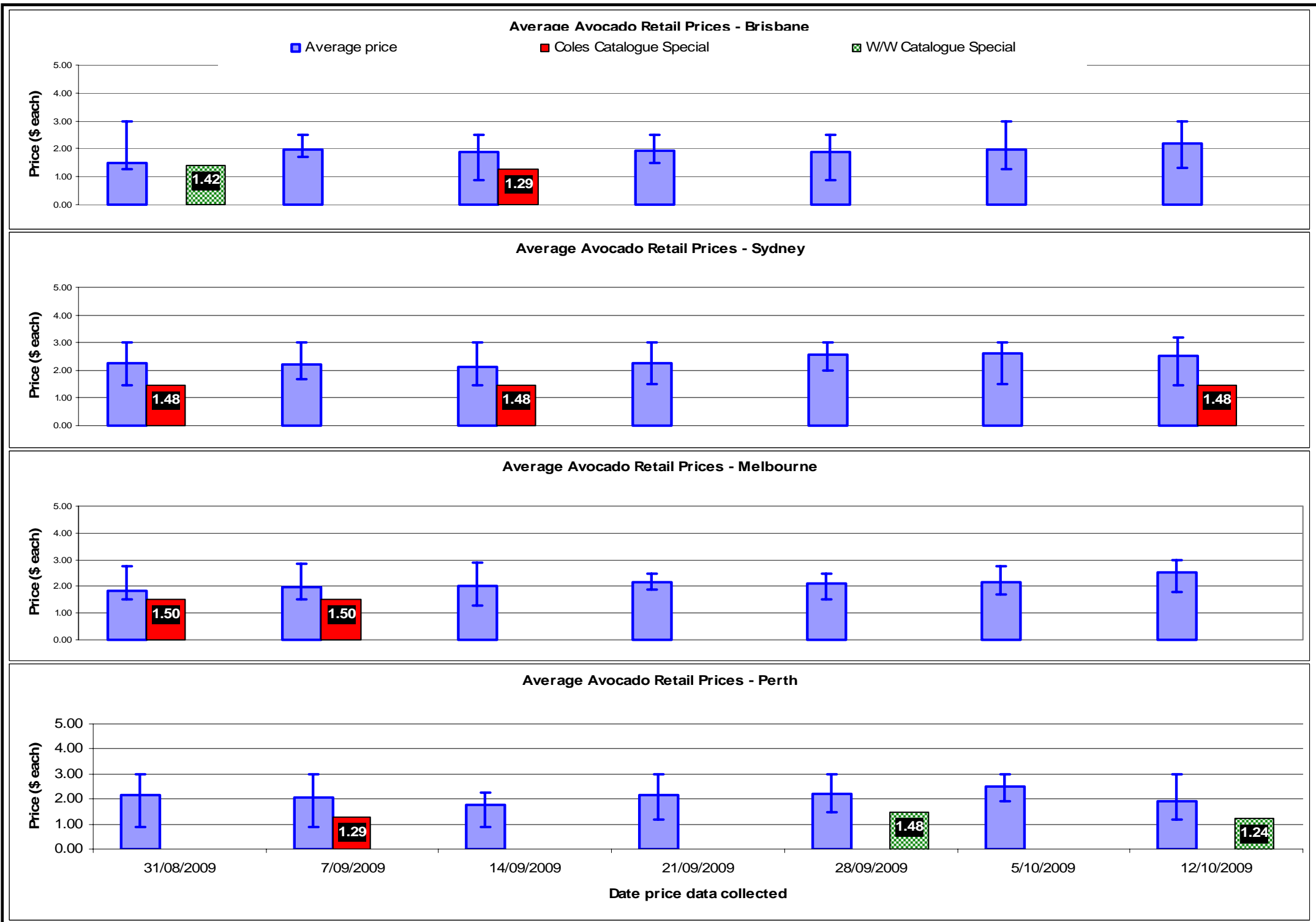
Week 41 contributors - Wholesalers

- | | |
|------------------------------------|---------------------------------------|
| Costa Exchange Trading (Adelaide) | Quality Produce International (Perth) |
| Dykes Bros (Melbourne) | Romeos Marketing (Brisbane) |
| Etherington (Perth) | Sculli & Co Pty Ltd (Melbourne) |
| Kelly's (Melbourne) | The La Manna Group (Adelaide) |
| Mercer Mooney (Perth) | The La Manna Group (Brisbane) |
| Murray Bros (Brisbane) | The La Manna Group (Melbourne) |
| Premier Fruits Pty Ltd (Melbourne) | United Fresh (Adelaide) |

Sales Report including Direct Sales from Packhouses, Wholesale Sales and Stock on Hand at Wholesale Level

	Trays 5.5kg eqv (incl. Mod6 & P84)				Bulk 10Kg Cartons					Pre-Pack Kg					Total (5.5Kg Eqv)			
	Hass	Shepard	Other	Total	Hass	Shepard	Other	Total	5.5Kg Eqv	Hass	Shepard	Other	Total	5.5Kg Eqv	Hass	Shepard	Other	Total
NSW																		
Total supermarket sales																		
Total non supermarket sales	# Data set not included because not enough NSW wholesalers contributed data this week																	
Total exports																		
Total sales	20,236			20,236						9,009			9,009	1,638	21,874			21,874
Total Stock on Hand																		
QLD																		
Total supermarket sales	14,333		4	14,337						2,203		1,188	3,391	617	14,734		220	14,954
Total non supermarket sales	15,589			15,589	82			82	149						15,738			15,738
Total exports	1,549			1,549	150			150	273						1,822			1,822
Total sales	31,471		4	31,475	232			232	422	2,203		1,188	3,391	617	32,293		220	32,513
Total Stock on Hand	11,799			11,799	31			31	56						11,855			11,855
SA & TAS																		
Total supermarket sales	3,840			3,840	47			47	85	37			37	7	3,932			3,932
Total non supermarket sales	3,829		426	4,254	526			526	956						4,785		426	5,211
Total exports																		
Total sales	7,669		426	8,094	573			573	1,042	37			37	7	8,717		426	9,143
Total Stock on Hand	7,450		663	8,113	974			974	1,771	16			16	3	9,224		663	9,887
VIC																		
Total supermarket sales	13,016			13,016	245			245	445	1,815			1,815	330	13,792			13,792
Total non supermarket sales	6,870		895	7,765	2,841		398	3,239	5,889						12,035		1,619	13,654
Total exports																		
Total sales	19,886		895	20,781	3,086		398	3,484	6,335	1,815			1,815	330	25,827		1,619	27,445
Total Stock on Hand	9,138		349	9,487	51		2,738	2,789	5,071						9,231		5,328	14,558
WA																		
Total supermarket sales	1,196			1,196											1,196			1,196
Total non supermarket sales	4,435	10		4,445	1,427	36	9	1,472	2,676						7,030	75	16	7,121
Total exports																		
Total sales	5,631	10		5,641	1,427	36	9	1,472	2,676						8,226	75	16	8,317
Total Stock on Hand	7,461		156	7,617	821		192	1,013	1,842						8,954		505	9,459
Total																		
Total supermarket sales	52,622		4	52,626	292			292	531	13,064		1,188	14,252	2,591	55,528		220	55,748
Total non supermarket sales	30,722	10	1,321	32,053	4,876	36	407	5,319	9,671						39,588	75	2,061	41,724
Total exports	1,549			1,549	150			150	273						1,822			1,822
Total sales	84,893	10	1,325	86,228	5,318	36	407	5,761	10,475	13,064		1,188	14,252	2,591	96,937	75	2,281	99,294
Total Stock on Hand	35,848		1,168	37,017	1,877		2,930	4,807	8,740	16			16	3	39,264		6,496	45,760



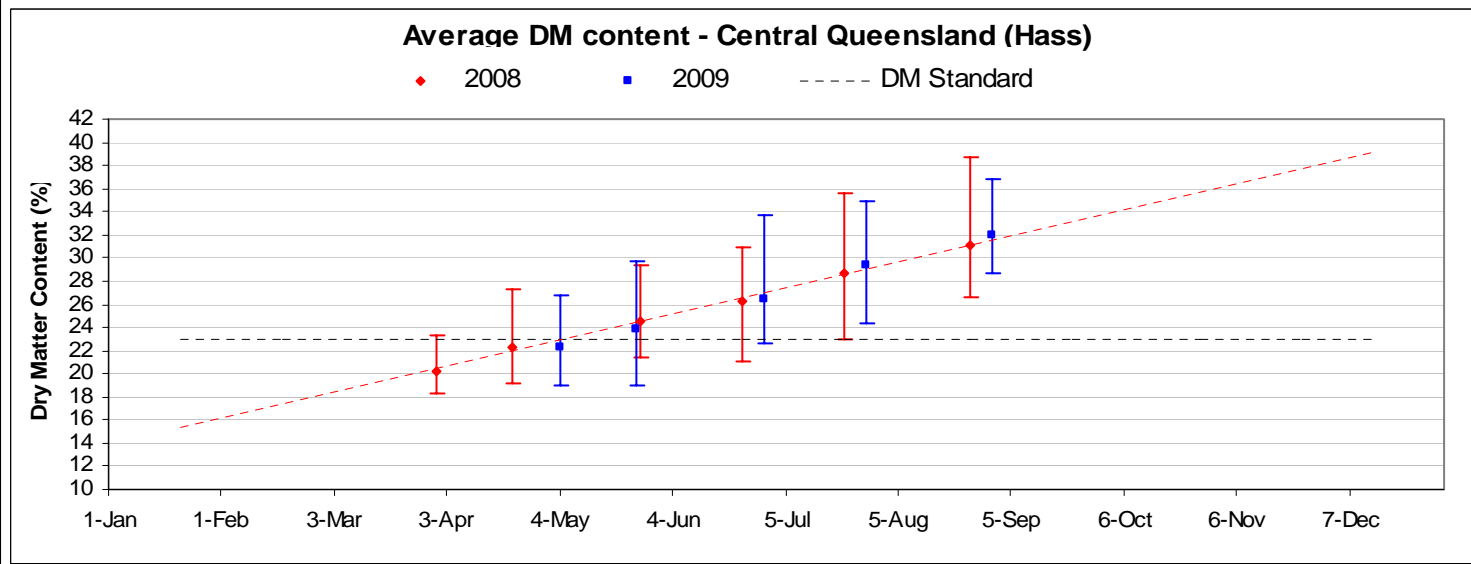
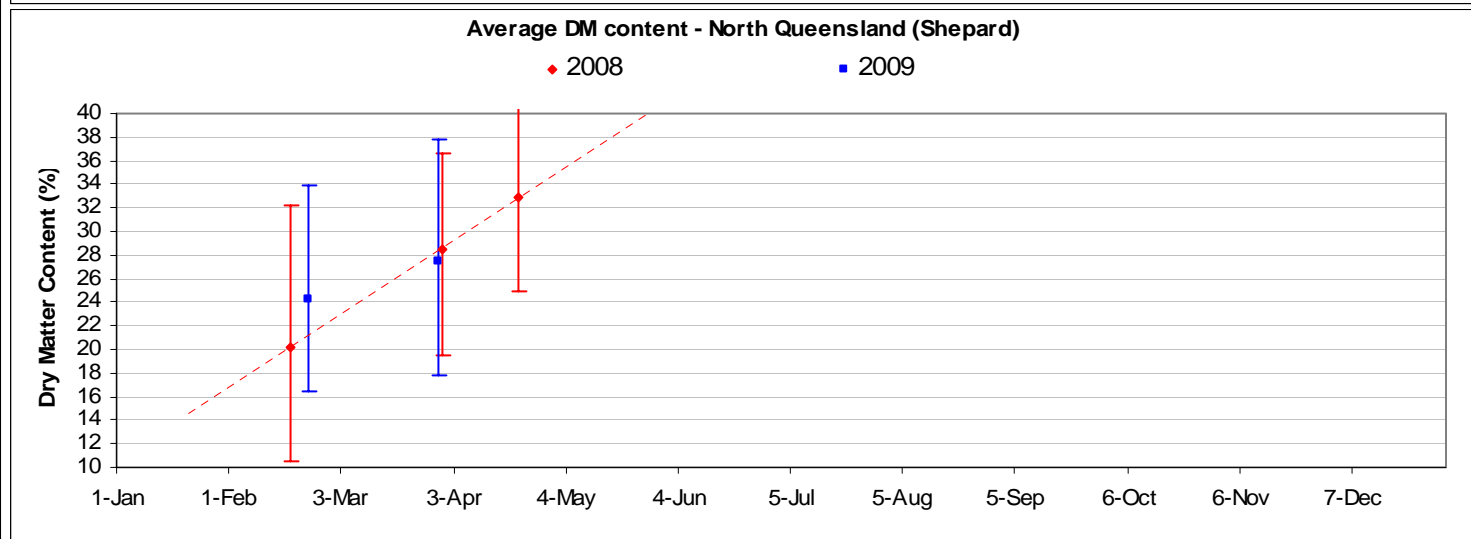
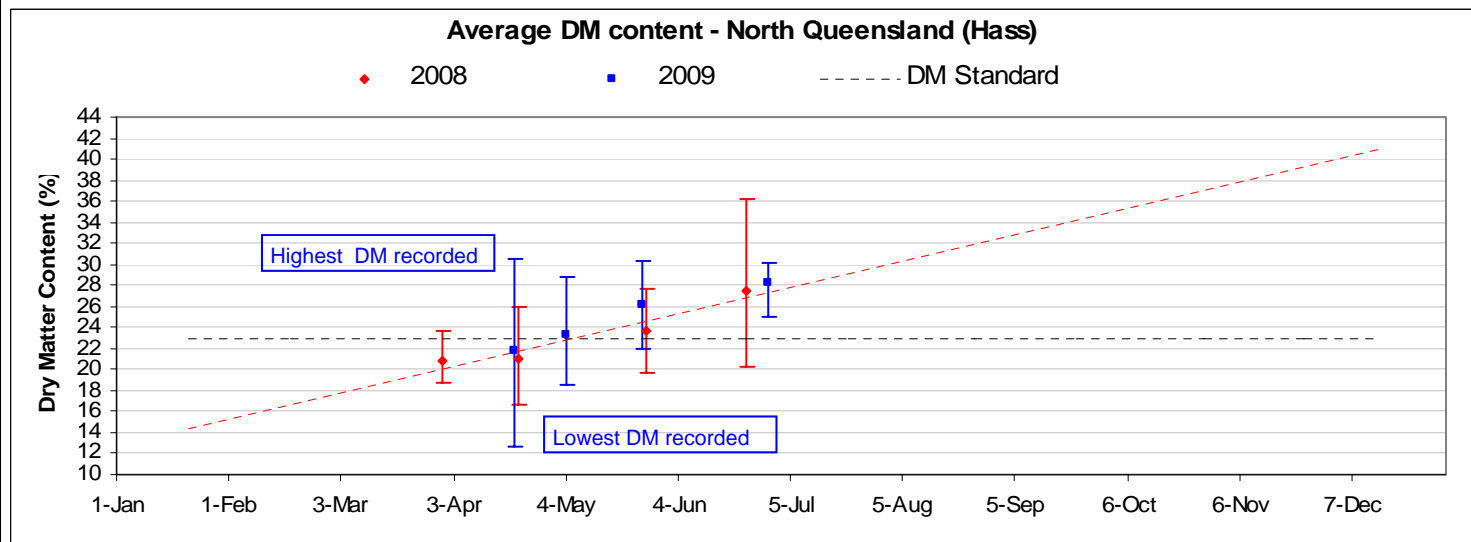




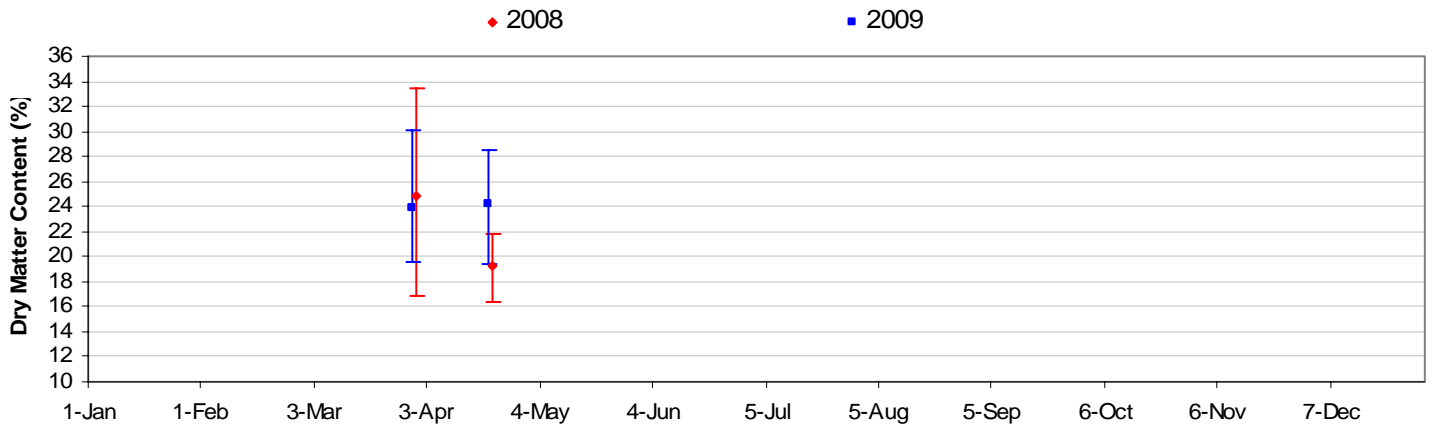
Avocado DM Content Report

Fruit collected 28th September 2009

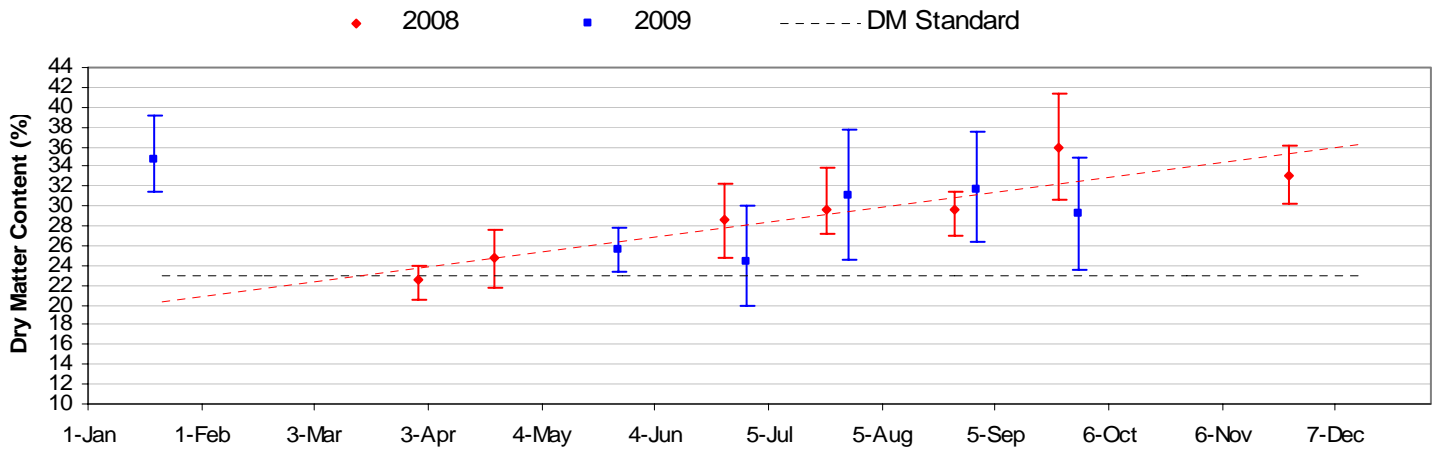
Dry Matter Intervals	Proportion of Fruit tested for each Dry matter interval 28th September 2009									
	NQ		CQ		SC	SQ	NNSW	CNSW	Tri	WA
	Hass	Shepard	Hass	Shepard	Hass	Hass	Hass	Hass	Hass	Hass
<=18%					0%	0%	0%	0%	0%	
18.1%-20.9%					0%	0%	0%	0%	0%	
21%-22.9%					0%	0%	0%	7%	0%	
23%-28%					37%	7%	20%	23%	25%	
27.1%-40%					63%	85%	80%	53%	75%	
>40%					0%	8%	0%	17%	0%	



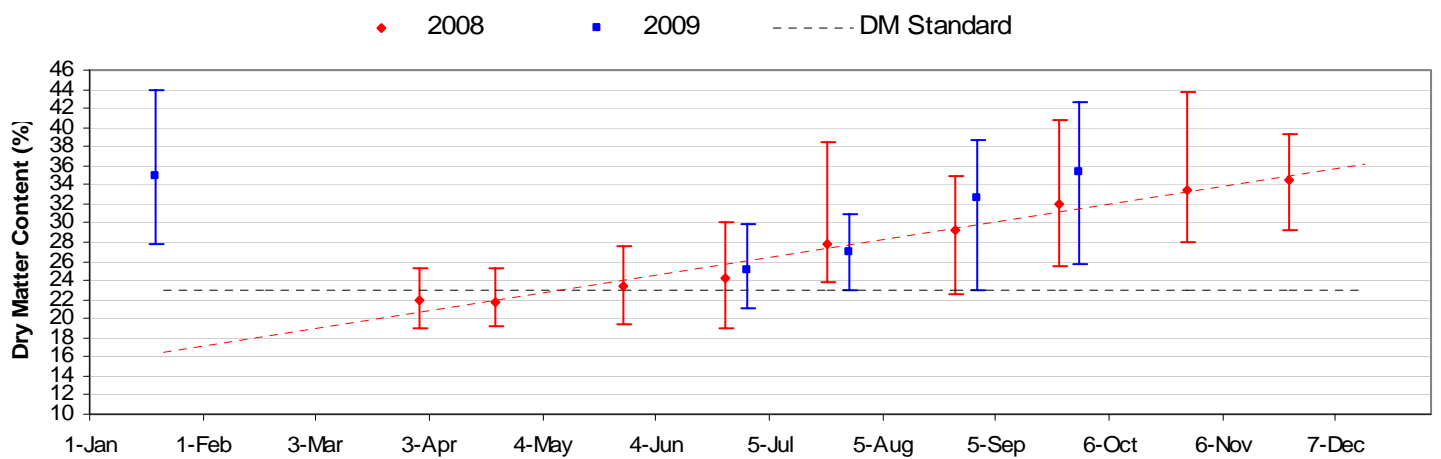
Average DM content - Central Queensland (Shepard)



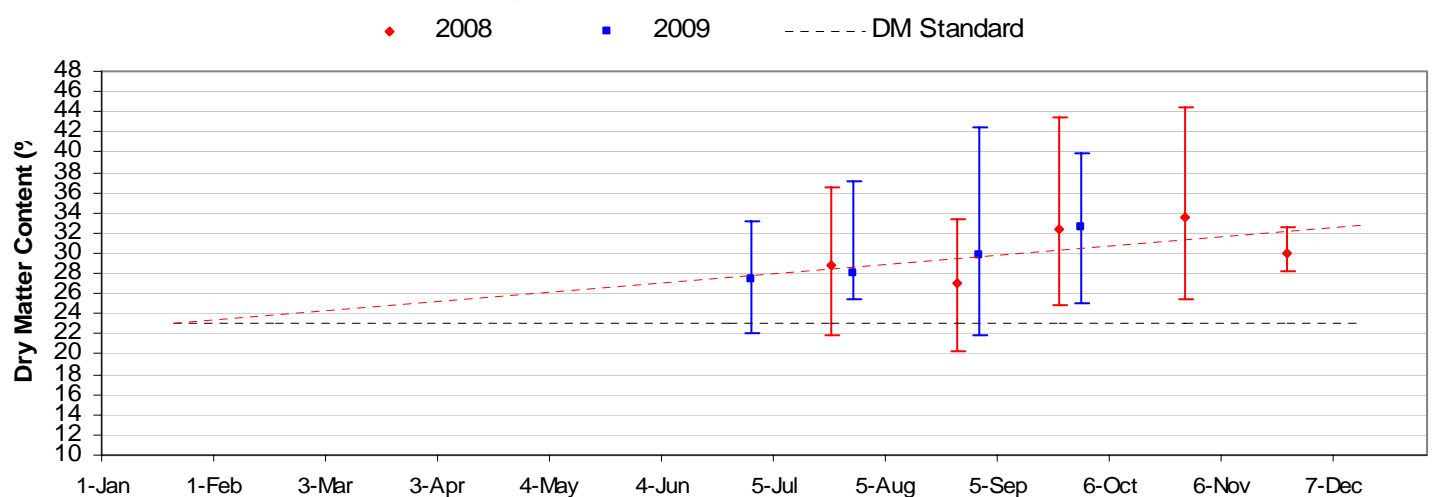
Average DM content - Sunshine Coast (Hass)



Average DM content - South Qld (Hass)

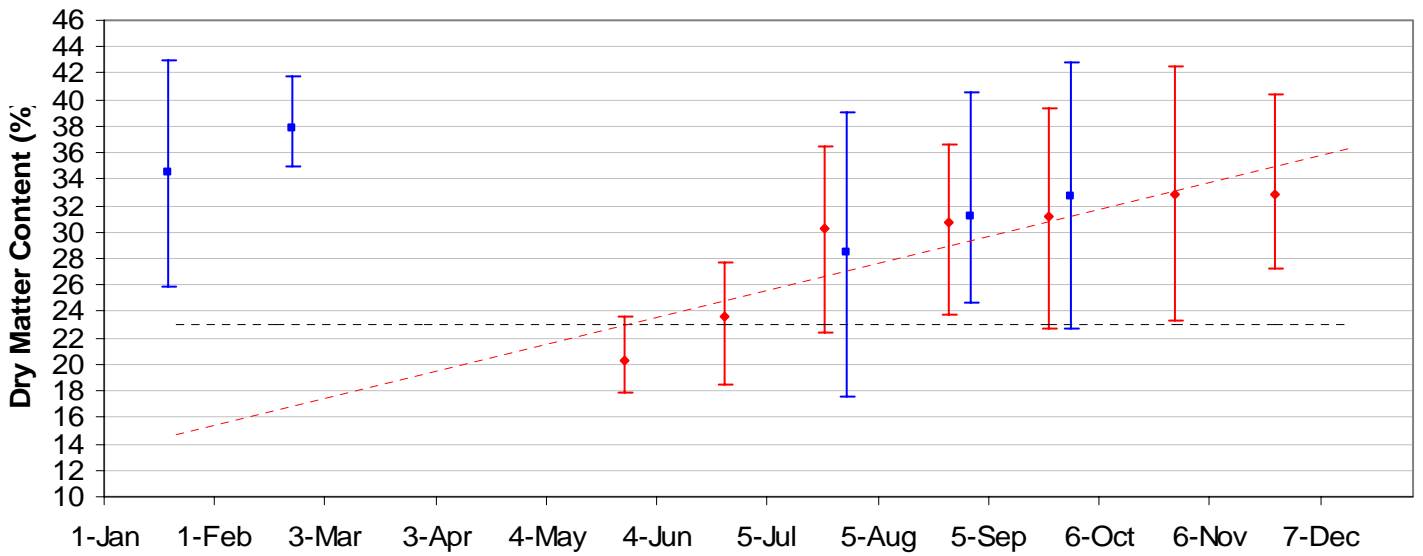


Average DM content - Northern NSW (Hass)



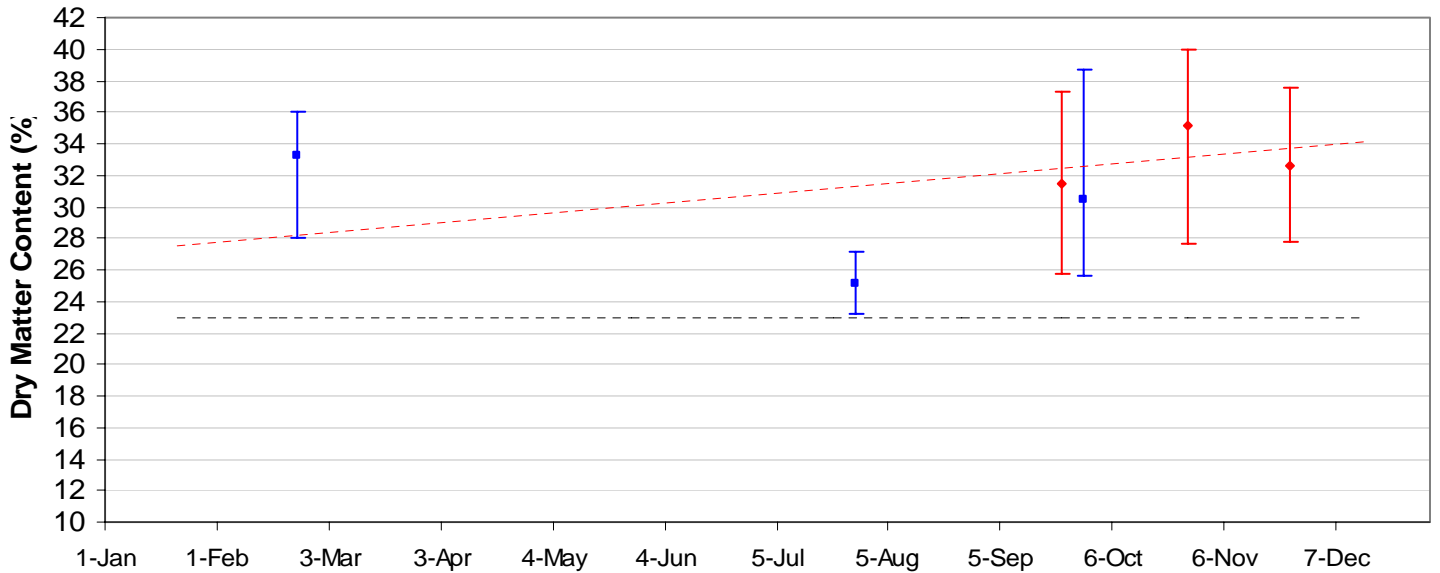
Average DM content - Central NSW (Hass)

◆ 2008 ■ 2009 - - - - DM Standard



Average DM content - Tristate (Hass)

◆ 2008 ■ 2009 - - - - DM Standard



Average DM content - WA (Hass)

◆ 2008 ■ 2009 - - - - DM Standard

