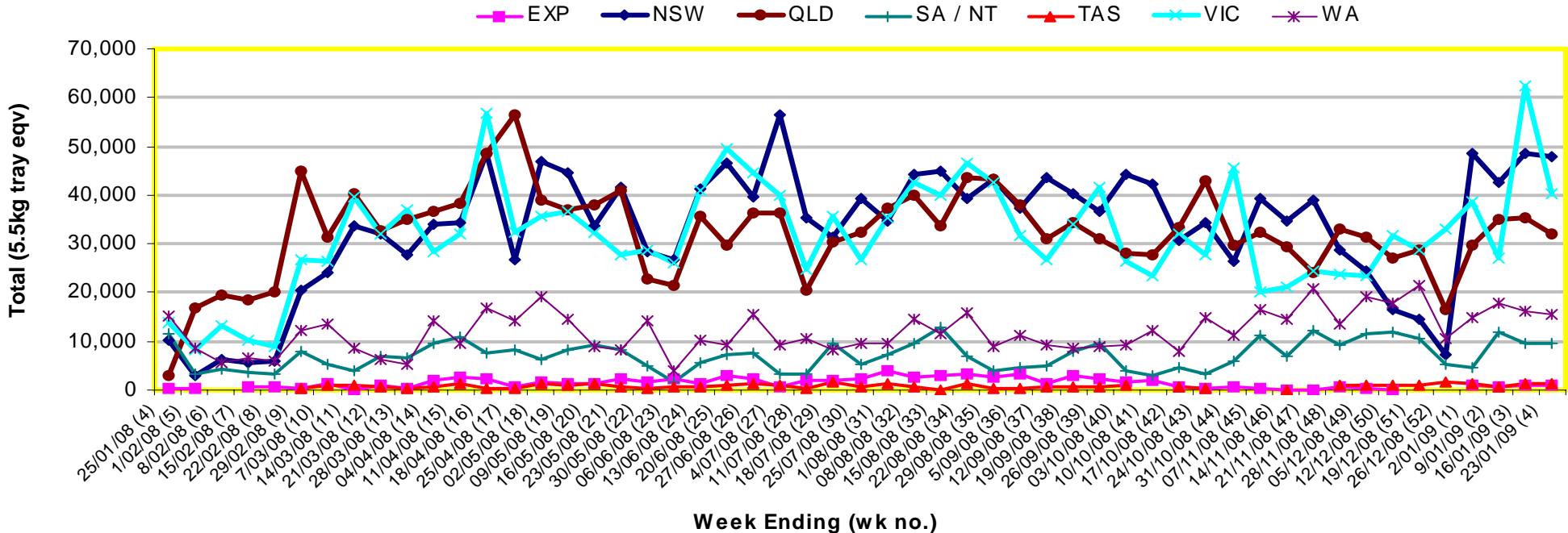




INFOCADO WEEKLY REPORT: 17th - 23rd January 2009 (Wk 4)

Industry Dispatches 17th - 23rd January 2009 (Wk 4)													
Dest. State	5.5kg	5.5kg	5.5kg	5.5kg	5.5kg	5.5kg	5.5kg	5.5kg	5.5kg	5.5kg	Bulk	P/PK	5.5Kg Eqv Trays All
	<16	16	18	20	22	23	25	28	28+	Total	10Kg	Kg	Total
EXP									880	880			880
NSW	15	3,227	8,243	11,291	168	9,032	6,297	4,166	2,132	44,571	1,893		48,013
QLD	309	1,827	4,160	6,632	290	6,742	5,414	2,653	1,965	29,992	896	1,853	31,958
SA / NT	130	633	138	564		1,611	3,564	910	35	7,585	591	5,000	9,569
TAS							1,187			1,187			1,187
VIC	293	2,904	8,579	11,216		6,755	3,827	2,592	1,220	37,386	1,552		40,208
WA	1	571	755	1,888		4,766	2,943	1,314	35	12,273	1,317	5,000	15,577
Total	748	9,162	21,875	31,591	458	28,906	23,232	12,515	5,387	133,874	6,249	11,853	147,391

Throughput Australian & NZ avocados by destination State
Throughput 1st January 2009 to date = 596,385 5.5kg tray eqv



Forecast Data (Week 4 - 8)

Variety	Trays - Total	Bulk	P/Pk	All - Total
	5.5Kg Eqv	10Kg	Kg	5.5Kg Eqv
Week 4—begin 17/01/09				
Gwen	1,350	170		1,659
Hass	130,000	6,308	10,290	143,340
Lamb Hass	760	40		833
Reed	190	20		226
Shepard	6,000	500		6,909
Wurtz	20			20
Week Total	138,320	7,038	10,290	152,987
Week 5—begin 24/01/09				
Gwen	500	90		664
Hass	118,528	4,801	9,290	128,946
Lamb Hass	900	50		991
Reed	1,050	50		1,141
Shepard	6,473	500		7,382
Week Total	127,450	5,491	9,290	139,123
Week 6—begin 31/01/09				
Gwen	900	90		1,064
Hass	116,632	3,528	9,290	124,736
Lamb Hass	900	50		991
Reed	800	20		836
Shepard	11,469	1,030		13,342
Week Total	130,701	4,718	9,290	140,968
Week 7—begin 7/02/09				
Hass	108,780	2,738	9,290	115,447
Lamb Hass	600	40		673
Shepard	12,866	260	4,000	14,066
Week Total	122,246	3,038	13,290	130,186
Week 8—begin 14/02/09				
Hass	85,814	2,528	5,000	91,319
Shepard	10,811	460	6,000	12,738
Week Total	96,625	2,988	11,000	104,058

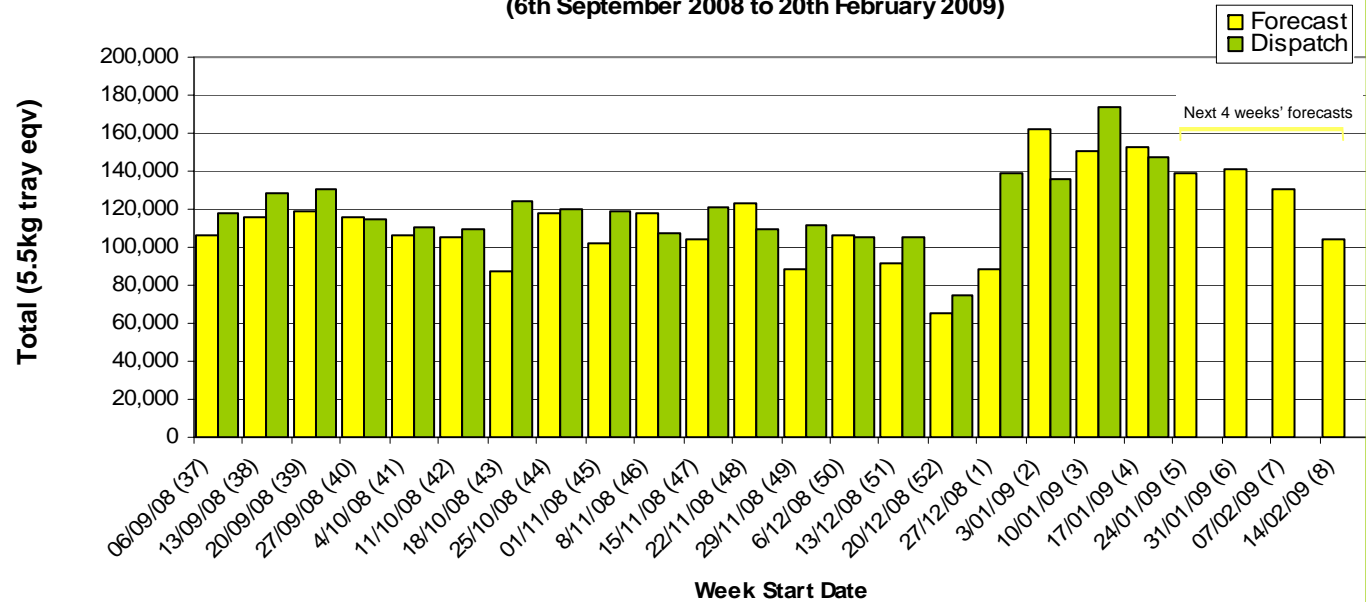
Green shading indicates dispatch data

Yellow shading indicates forecast data

Dispatch Data (Week 4 - begin 17/01/09)

Variety	Trays	Bulk	P/PK	5.5Kg Eqv
	5.5kg eqv	10Kg	Kg	Total Trays
Gwen	1,066	195		1,421
Hass	128,013	5,666	11,853	140,470
Lamb Hass	784	52		879
Reed	147	9		163
Shepard	3,848	327		4,443
Wurtz	16			16
Total	133,874	6,249	11,853	147,391

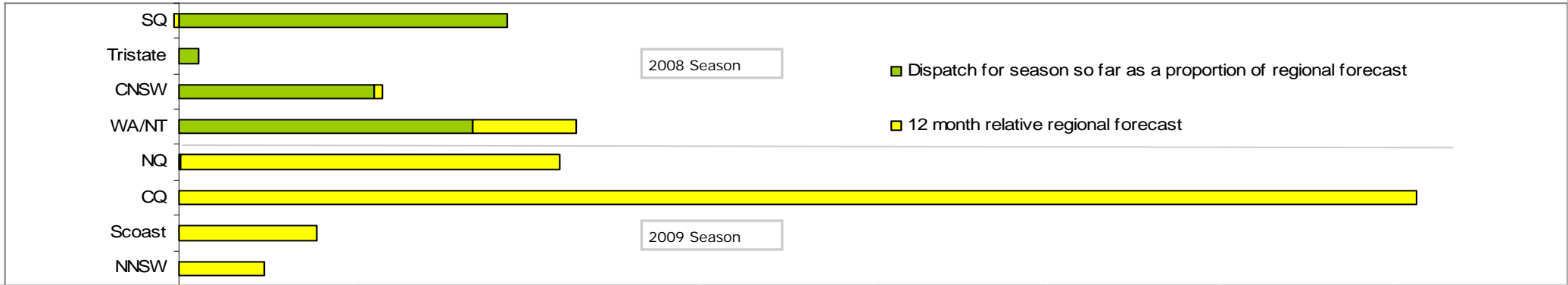
Dispatch vs weekly forecast for Australian & NZ Avocados - all varieties and all packs (6th September 2008 to 20th February 2009)



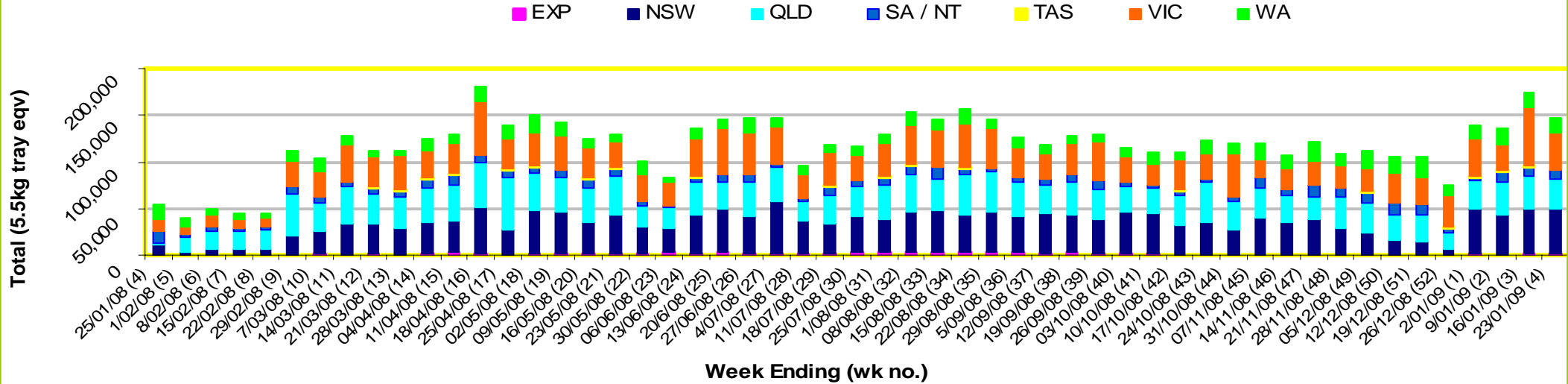
New Zealand Avocado Exports—Forecast v Import Statistics (5.5kg eqv trays) August 2008-April 2009

Export Dest'n	Aug	Sep	Oct	Nov	Dec	Jan	Feb	Mar	Apr	Total to date
NZ Export Forecast		26,730	177,487	319,958	378,497	304,722	122,824	6,282		1,336,500
Australia	0	7,713	210,274	312,989	345,200					876,176
USA										
Japan		3,920	21,563	37,519	24,334					87,335
Total	0	11,633	231,837	350,508	369,534					963,511

Percentage dispatched by region (Based on seasonal forecast - 2008)



Throughput Australian & NZ avocados by destination State
Throughput 1st January 2009 to date = 596,385 5.5kg tray eqv



Week 4 contributors - Packhouses

- | | |
|-----------------------------------|-------------------------------|
| Adv. Packing & Marketing Services | I & A Tolson |
| NZ Avocado Industry Council | Kulnura Ambrosia Avocados |
| AvoLand | Lavers Orchards |
| Avonova | Mariners Rest |
| C F Fechner | Midcoast Avocados |
| Chinoola Orchards | Natures Fruit Company |
| Chislett Developments Pty Ltd | RM & KL Cornwall |
| Coastal Avocados | Sunfresh |
| Delroy Orchards | VP & EA Farrell |
| Gunnado Farm | Willow Creek Strawberries P/L |
| Hilltop Mareeba | Zanfar Pty Ltd |

Week 4 contributors - Wholesalers

- | | |
|-----------------------------------|---------------------------------------|
| Barkers (Melbourne) | Murray Bros (Brisbane) |
| Costa Exchange Trading (Adelaide) | Premier Fruits Pty Ltd (Melbourne) |
| Costa Exchange Trading (Brisbane) | Quality Produce International (Perth) |
| Dykes Bros (Melbourne) | Sculli & Co Pty Ltd (Melbourne) |
| Etherington (Perth) | The La Manna Group (Adelaide) |
| Exotic Fruit Traders (Sydney) | The La Manna Group (Brisbane) |
| Kelly's (Melbourne) | The La Manna Group (Melbourne) |
| Mercer Mooney (Perth) | |

Sales Report including Direct Sales from Packhouses, Wholesale Sales and Stock on Hand at Wholesale Level

	Trays 5.5kg eqv (incl. Mod6 & P84)				Bulk 10kg Cartons				Pre-Pack Kg					Total (5.5kg eqv)				
	Hass	Shepard	Other	Total	Hass	Shepard	Other	Total	5.5kg eqv	Hass	Shepard	Other	Total	5.5kg eqv	Hass	Shepard	Other	Total
NSW																		
Total supermarket sales																		
Total non supermarket sales																		
Total exports																		
Total sales	23,582			23,582	1,100			1,100	2,000						25,582			25,582
Total stock on hand																		
QLD																		
Total supermarket sales																		
Total non supermarket sales																		
Total exports																		
Total sales	40,325		293	40,618	149			149	271	2,671			2,671	486	41,082		293	41,375
Total stock on hand																		
SA & TAS																		
Total supermarket sales																		
Total non supermarket sales																		
Total exports																		
Total sales	9,894		279	10,173	787			787	1,431	5,218			5,218	949	12,274		279	12,553
Total stock on hand #																		
VIC																		
Total supermarket sales	17,212			17,212											17,212			17,212
Total non supermarket sales	7,374	16	100	7,490	506			506	920					8,294	16	100	8,410	
Total exports																		
Total sales	24,586	16	100	24,702	506			506	920					25,506	16	100	25,622	
Total stock on hand	27,972	128	124	28,224	477			477	867					28,839	128	124	29,091	
WA																		
Total supermarket sales	4,876		12	4,888						5,000			5,000	909	5,786		12	5,798
Total non supermarket sales	5,214			5,214	1,675			1,675	3,045					8,259			8,259	
Total exports																		
Total sales	10,090		12	10,102	1,675			1,675	3,045	5,000			5,000	909	14,045		12	14,057
Total stock on hand #	11,226			11,226	710			710	1,291					12,517			12,517	
TOTAL																		
Total supermarket sales	85,320		26	85,346						12,841			12,841	2,335	87,655		26	87,681
Total non supermarket sales	22,277	16	658	22,951	4,217			4,217	7,667	48			48	9	29,953	16	658	30,627
Total exports	880			880										880			880	
Total sales	108,478	16	684	109,178	4,217			4,217	7,667	12,889			12,889	2,343	118,488	16	684	119,188
Total stock on hand	61,185	128	301	61,614	1,902			1,919	3,489	189			189	34	64,678	128	332	65,138

Weekly National Sales

