



# INFOCADO WEEKLY REPORT

3rd to 9th November 2007 (Wk 45)

Green shading indicates dispatch data

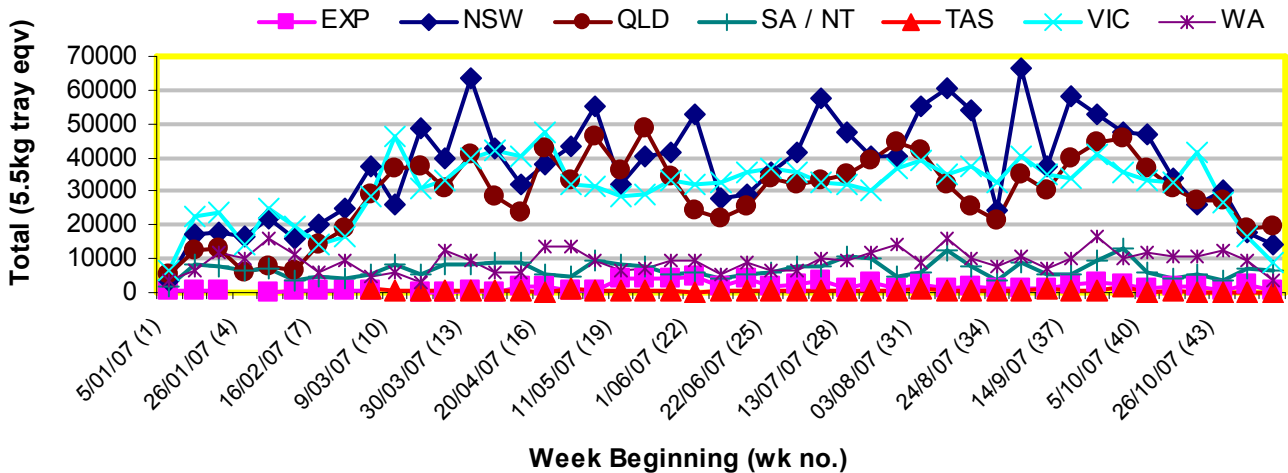
Yellow shading indicates forecast data

## Industry Dispatches 3rd November to 9th November (Wk 45)

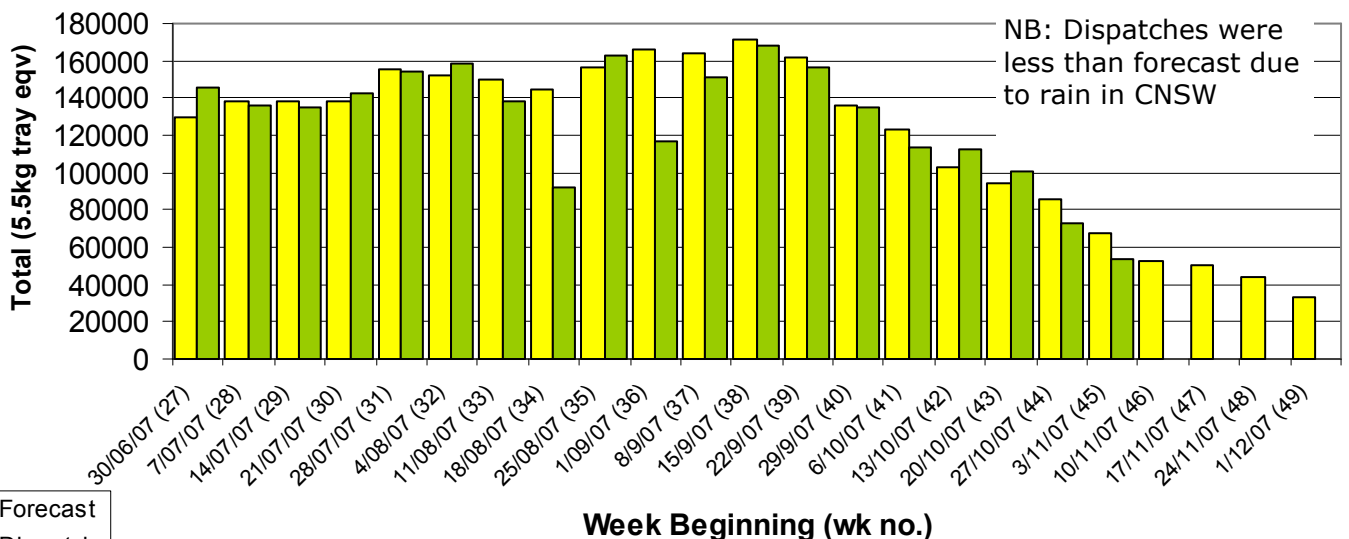
Dest. State	5.5kg <16	5.5kg 16	5.5kg 18	5.5kg 20	5.5kg 22	5.5kg 23	5.5kg 25	5.5kg 28	5.5kg 28+	5.5kg Total	Bulk 10Kg	P/PK Kg	Other Kg	5.5Kg Eqv Trays All Total
EXP								584	168	752	20			788
NSW	107	696	1,615	2,687	558	1,294	2,049	919	148	10,073	2,309		300	14,326
QLD	33	352	1,395	1,234	3,549	1,668	4,086	2,156	6	14,479	1,569	10,649	400	19,341
SA / NT	39	77	1,363	1,578	44	623	1,144	486		5,354	694			6,616
TAS								10		10				10
VIC	36	223	1,325	1,570	260	1,292	1,349	501	18	6,574	1,243			8,834
WA		6	312	74		1,149	580	537		2,658	631			3,805
<b>Total</b>	<b>215</b>	<b>1,354</b>	<b>6,010</b>	<b>7,143</b>	<b>4,411</b>	<b>6,026</b>	<b>9,208</b>	<b>5,193</b>	<b>340</b>	<b>39,900</b>	<b>6,466</b>	<b>10,649</b>	<b>700</b>	<b>53,719</b>

## Throughput Australian avocados by destination State

Throughput 1st January 2007 to date = 5,235,888 5.5kg tray eqv



## Dispatch vs weekly forecast for Australian Avocados - all varieties and all packs (30th June 2007 to 7th December 2007)



### Major Capital City Weather Report – week ahead

City	Fri	Sat	Sun	Mon	Public Hols	School Holidays
<b>Brisbane</b>	26°	26°	26°	27°	December 25-26 Christmas & Boxing Days	15th Dec-28th Jan
<b>Melbourne</b>	21°	24°	29°	33°	December 25-26 Christmas & Boxing Days	22nd Dec-28th Jan
<b>Perth</b>	25°	26°	23°	21°	December 25-26 Christmas & Boxing Days	14th Dec—3rd Feb
<b>Sydney</b>	25°	26°	26°	26°	December 25-26 Christmas & Boxing Days	22nd Dec—28th Jan

### Forecast Data (Week 45-49)

Variety	Trays - Total	Bulk	P/Pk	Other	All - Total
	5.5Kg Eqv	10Kg	Kg	Kg	5.5Kg Eqv
Week 45—begin 3/11/07					
Gwen	300	10			<b>318</b>
Hass	51,647	7,206	8,100	250	<b>66,267</b>
Lamb Hass	550	130			<b>786</b>
<b>Week Total</b>	<b>52,497</b>	<b>7,346</b>	<b>8,100</b>	<b>250</b>	<b>67,371</b>
Week 46—begin 10/11/07					
Gwen	420	40			<b>493</b>
Hass	41,145	5,246	6,500	250	<b>51,910</b>
Lamb Hass	300			1	<b>300</b>
<b>Week Total</b>	<b>41,865</b>	<b>5,286</b>	<b>6,500</b>	<b>251</b>	<b>52,704</b>
Week 47—begin 17/11/07					
Gwen	420	40			<b>493</b>
Hass	38,814	5,295	6,500	250	<b>49,668</b>
Lamb Hass	500	30			<b>555</b>
<b>Week Total</b>	<b>39,734</b>	<b>5,365</b>	<b>6,500</b>	<b>250</b>	<b>50,716</b>
Week 48— begin 24/11/07					
Gwen	540	40			<b>613</b>
Hass	33,464	4,440	6,500		<b>42,719</b>
Lamb Hass	60			100	<b>78</b>
<b>Week Total</b>	<b>34,064</b>	<b>4,480</b>	<b>6,500</b>	<b>100</b>	<b>43,409</b>
Week 49— begin 1/12/07					
Gwen	540	40			<b>613</b>
Hass	25,464	3,260	6,500		<b>32,573</b>
Lamb Hass	150	30			<b>205</b>
Reed	200				<b>200</b>
<b>Week Total</b>	<b>26,354</b>	<b>3,330</b>	<b>6,500</b>	<b>0</b>	<b>33,591</b>

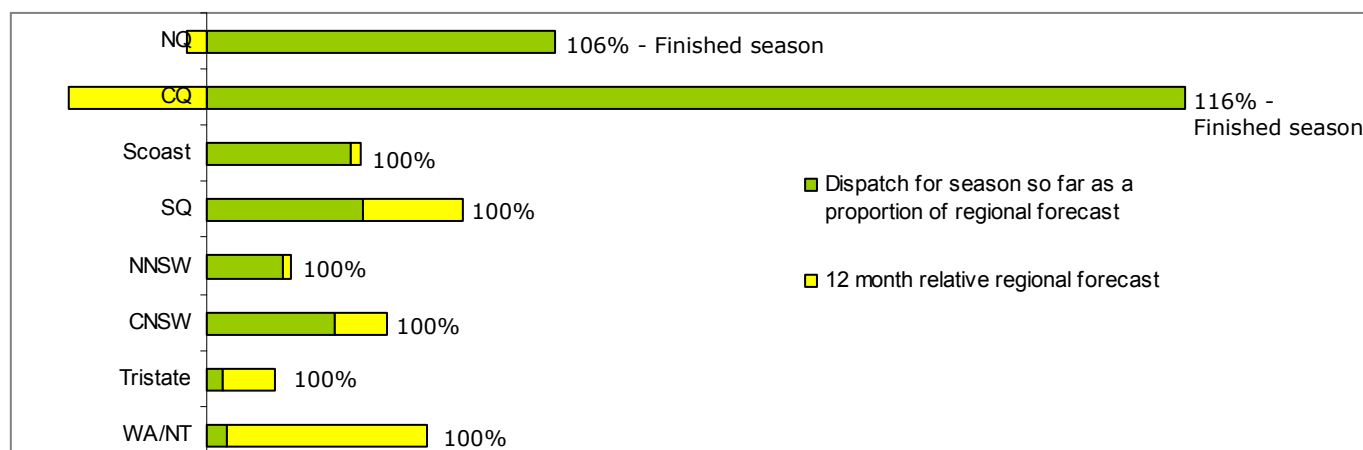
### Dispatch Data (Week 45—begin 3/11/07)

Variety	Trays	Bulk	P/PK	Other	5.5Kg Eqv
	5.5kg eqv	10Kg	Kg	Kg	Total Trays
Gwen	440	39	0	0	<b>511</b>
Hass	38,635	6,361	10,649	700	<b>52,263</b>
Lamb Hass	472	31	0	0	<b>528</b>
Pinkerton	91	0	0	0	<b>91</b>
Reed	143	0	0	0	<b>143</b>
Sharwil	119	35	0	0	<b>183</b>
<b>Grand Total</b>	<b>39,900</b>	<b>6,466</b>	<b>10,649</b>	<b>700</b>	<b>53,719</b>

### Week 45 contributors

Avonova  
 Balmoral Orchard  
 C F Fechner  
 Chinoola Orchards  
 Coastal Avocados  
 DJ Tottenham  
 Green Nugget Orchards  
 Green Pear Avocado  
 I & A Tolson  
 Karri ry Produce  
 Merrinee Farms  
 Midcoast Avocados  
 Natures Fruit Company  
 One Harvest  
 RM & KL Cornwall  
 Rob Farnsworth Pty Ltd  
 Summerland House With No Steps  
 Sunfresh  
 Sunnyspot Packhouse PL  
 Sunrise Avocados  
 Tam MT Farm Management  
 Tenterfield Fruit Packers  
 Vitor Marketing Pty Ltd  
 WJ Row

### Percentage dispatched by region (Based on seasonal forecast - 2007)



**NB: Recently we asked for feedback regarding the relevance and usefulness of the price data presented on the 3rd page of this weekly report. Based on that feedback, we have suspended it's inclusion in it's current form. We are investigating better, more comprehensive alternatives.**