



INFOCADO WEEKLY REPORT

10th to 16th November 2007 (Wk 46)

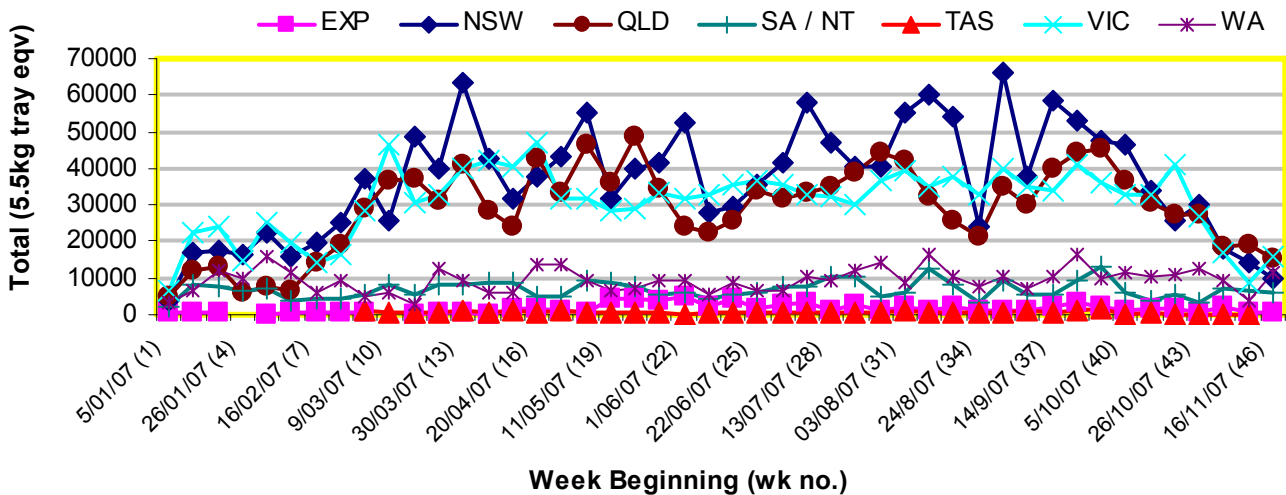
Green shading indicates dispatch data

Yellow shading indicates forecast data

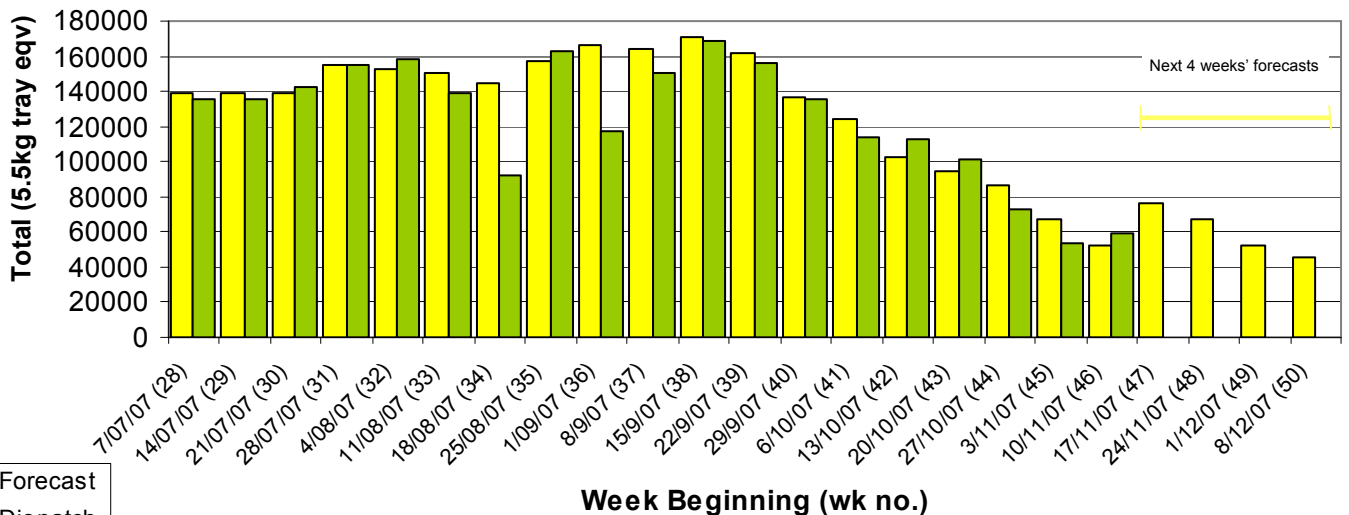
Industry Dispatches 10th to 16th November (Wk 46)

Dest. State	5.5kg	5.5kg	5.5kg	5.5kg	5.5kg	5.5kg	5.5kg	5.5kg	5.5kg	5.5kg	Bulk	P/PK	Other	5.5Kg Eqv Trays All
	<16	16	18	20	22	23	25	28	28+	Total	10Kg	Kg	Kg	Total
EXP								584	168	752	20			788
NSW	28	242	1,536	1,094	270	762	1,085	1,097	58	6,172	1,981		160	9,803
QLD	33	138	1,351	493	2,705	956	3,182	1,805	5	10,668	2,061	4,514	210	15,274
SA / NT	57	233	661	1,117	55	675	325	881		4,004	1,115			6,031
TAS														
VIC	26	516	1,430	3,174	258	3,024	2,369	1,733	114	12,644	1,689			15,715
WA		5	653	1,669		2,407	2,844	1,291		8,869	1,517			11,627
Total	144	1,134	5,631	7,547	3,288	7,824	9,805	7,391	345	43,109	8,383	4,514	370	59,239

Throughput Australian avocados by destination State Throughput 1st January 2007 to date = 5,295,126 5.5kg tray eqv



Dispatch vs weekly forecast for Australian Avocados - all varieties and all packs (7th July to 14th December 2007)



Major Capital City Weather Report – week ahead

City	Wed	Thu	Fri	Sat	Public Hols	School Holidays
Brisbane	27°	28°	24°	25°	December 25-26 Christmas & Boxing Days	15th Dec-28th Jan
Melbourne	18°	22°	24°	24°	December 25-26 Christmas & Boxing Days	22nd Dec-28th Jan
Perth	29°	33°	35°	35°	December 25-26 Christmas & Boxing Days	14th Dec—3rd Feb
Sydney	25°	22°	22°	24°	December 25-26 Christmas & Boxing Days	22nd Dec—28th Jan

Forecast Data (Week 46-50)

Variety	Trays - Total	Bulk	P/Pk	Other	All - Total
	5.5Kg Eqv	10Kg	Kg	Kg	5.5Kg Eqv
Week 46—begin 10/11/07					
Gwen	420	40			493
Hass	41,145	5,246	6,500	250	51,910
Lamb Hass	300			1	300
Week Total	41,865	5,286	6,500	251	52,704
Week 47—begin 17/11/07					
Gwen	520	40			593
Hass	57,078	9,006	6,500	250	74,680
Lamb Hass	800	30			855
Week Total	58,398	9,076	6,500	250	76,127
Week 48—begin 24/11/07					
Gwen	2,040	240			2,476
Hass	47,474	8,065	6,500	200	63,356
Lamb Hass	860	30		100	933
Week Total	50,374	8,335	6,500	300	66,766
Week 49— begin 1/12/07					
Gwen	540	40			613
Hass	37,564	6,775	6,500	200	51,100
Lamb Hass	150	30			205
Reed	450	60			559
Week Total	38,704	6,905	6,500	200	52,477
Week 50— begin 8/12/07					
Gwen	650	60			759
Hass	31,484	5,900	6,500		43,393
Lamb Hass	230	30		100	303
Reed	450	60			559
Week Total	32,814	6,050	6,500	100	45,014

Dispatch Data (Week 46—begin 10/11/07)

Variety	Trays	Bulk	P/PK	Other	5.5Kg Eqv
	5.5kg eqv	10Kg	Kg	Kg	Total Trays
Gwen	3,706	566	0	0	4,735
Hass	38,032	7,680	4,514	160	52,846
Lamb Hass	647	77	0	0	787
Pinkerton	91	0	0	0	91
Reed	353	25	0	210	436
Sharwil	161	0	0	0	161
Wurtz	119	35	0	0	183
Grand Total	43,109	8,383	4,514	370	59,239

Week 46 contributors

AvoLand
 Avonova
 Balmoral Orchard
 C F Fechner
 Chinoola Orchards
 Chislett Developments Pty Ltd
 Coastal Avocados
 DJ Tottenham
 Green Nugget Orchards
 Karri ry Produce
 Merrinee Farms
 Midcoast Avocados
 Mt Binga Orchards Pty Ltd
 Natures Fruit Company
 One Harvest
 RM & KL Cornwall
 Rob Farnsworth Pty Ltd
 Summerland House With No Steps
 Sunfresh
 Sunnyspot Packhouse PL
 Sunrise Avocados
 Tam MT Farm Management
 Vitor Marketing Pty Ltd
 WJ Row

Percentage dispatched by region (Based on seasonal forecast - 2007)

