



INFOCADO WEEKLY REPORT

1st to 7th December 2007 (Wk 49)

Green shading indicates dispatch data

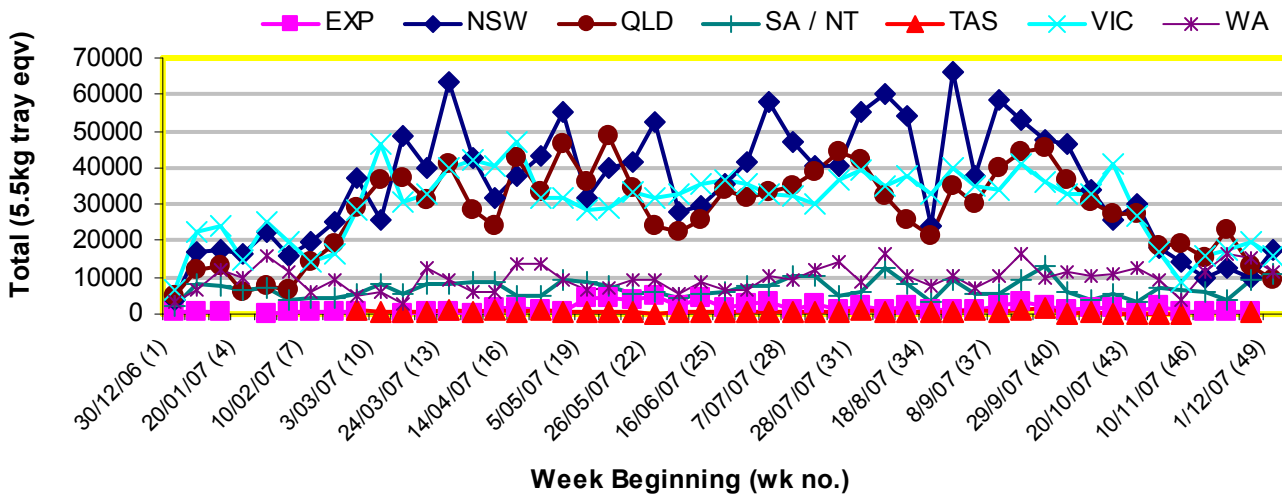
Yellow shading indicates forecast data

Industry Dispatches 1st to 7th December (Wk 49)

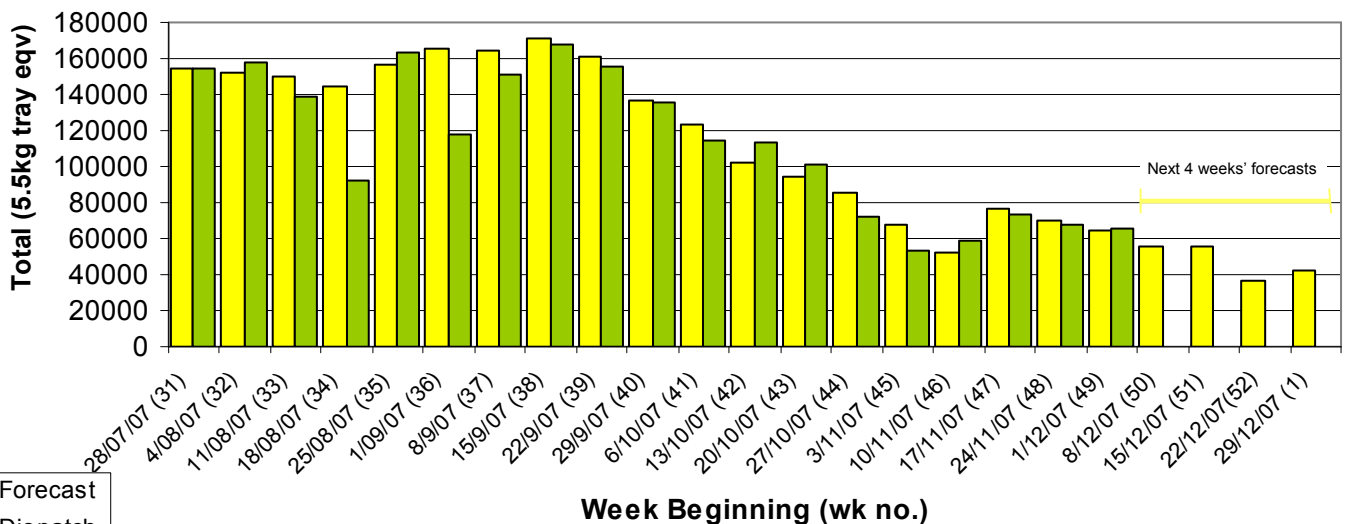
Dest. State	5.5kg <16	5.5kg 16	5.5kg 18	5.5kg 20	5.5kg 22	5.5kg 23	5.5kg 25	5.5kg 28	5.5kg 28+	5.5kg Total	Bulk 10Kg	P/PK Kg	Other Kg	5.5Kg Eqv Trays All Total
EXP														
NSW	115	559	1,490	2,269	305	2,817	1,967	1,580	12	11,114	3,516		290	17,560
QLD	1	83	702	568	1,275	638	1,360	1,233	7	5,867	1,111	8,844		9,495
SA / NT	155	71	191	396	2,165	2,203	2,775	1,320	16	9,292	1,027			11,159
TAS														
VIC	160	516	1,777	3,029	47	2,858	1,682	1,985	185	12,239	2,042			15,952
WA		54	362	1,769		2,911	2,458	1,611		9,165	945	3,990		11,608
Total	431	1,283	4,522	8,031	3,792	11,427	10,242	7,729	220	47,677	8,641	12,834	290	65,774

Throughput Australian avocados by destination State

Throughput 1st January 2007 to date = 5,502,552 5.5kg tray eqv



Dispatch vs weekly forecast for Australian Avocados - all varieties and all packs (28th July 2007 to 4th January 2008)



Major Capital City Weather Report – week ahead

City	Tue	Wed	Thu	Fri	Public Hols	School Holidays
Brisbane	27°	28°	24°	25°	December 25-26 Christmas & Boxing Days	15th Dec-28th Jan
Melbourne	18°	22°	24°	24°	December 25-26 Christmas & Boxing Days	22nd Dec-28th Jan
Perth	29°	33°	35°	35°	December 25-26 Christmas & Boxing Days	14th Dec—3rd Feb
Sydney	25°	22°	22°	24°	December 25-26 Christmas & Boxing Days	22nd Dec—28th Jan

Forecast Data (Week 49-1)

Variety	Trays - Total	Bulk	P/Pk	Other	All - Total
	5.5Kg Eqv	10Kg	Kg	Kg	5.5Kg Eqv
Week 49—begin 1/12/07					
Gwen	1,404	78			1,546
Hass	43,155	8,647	6,050	200	60,013
Lamb Hass	700	50			791
Reed	1,250	20		300	1,341
Sharwil	500	200			864
Week Total	47,009	8,995	6,050	500	64,555
Week 50—begin 8/12/07					
Gwen	1,704	101			1,888
Hass	37,512	5,896	1,150	200	48,477
Lamb Hass	450	50		100	559
Reed	3,450	360			4,105
Sharwil	500	200			864
Week Total	43,616	6,607	1,150	300	55,893
Week 51—begin 15/12/07					
Gwen	2,030	95			2,203
Hass	40,244	5,291	200	100	49,918
Lamb Hass	220	20			256
Reed	2,800	260			3,273
Week Total	45,294	5,666	200	100	55,650
Week 52— begin 22/12/07					
Gwen	1,600	90			1,764
Hass	25,688	4,564	200		34,022
Lamb Hass	110	10			128
Reed	600	60			709
Week Total	27,998	4,724	200	0	36,623
Week 1— begin 29/12/07					
Gwen	1,000	70			1,127
Hass	31,800	4,396	200		39,829
Lamb Hass	220	20			256
Reed	600	60			709
Week Total	33,620	4,546	200	0	41,921

Dispatch Data (Week 49—begin 1/12/07)

Variety	Trays	Bulk	P/PK	Other	5.5Kg Eqv
	5.5kg eqv	10Kg	Kg	Kg	Total Trays
Gwen	925	167	0	0	1,229
Hass	43,691	8,078	12,834	290	60,764
Lamb Hass	2,084	352	0	0	2,724
Reed	604	42	0	0	680
Sharwil	330	2	0	0	334
Wurtz	43	0	0	0	43
Total	47,677	8,641	12,834	290	65,774

Week 49 contributors

Avonova
C F Fechner
Chinoola Orchards
Chislett Developments Pty Ltd
Coastal Avocados
Delroy Orchards
DJ Tottenham
Green Nugget Orchards
Karri Country Produce
Kulnura Ambrosia Avocados
Mariners Rest
Midcoast Avocados
Natures Fruit Company
One Harvest
Pack House / Supplier
RM & KL Cornwall
Rob Farnsworth Pty Ltd
Sunfresh
Sunnyspot Packhouse PL
Sunrise Avocados
Tam MT Farm Management
Vitor Marketing Pty Ltd
WJ Row

New Zealand Avocado Exports—Forecast v Import Statistics ('000 5.5kg eqv trays)

Export Dest'n	Aug	Sep	Oct	Nov	Dec	Jan	Feb	Mar	Apr	Total to date
NZ Export Forecast		100	350	600	550	600	450	140	10	2,800
Australia	0.4		163	Avail mid Dec						163
USA		75	187	100	66 to 2/12/07					429
Japan		26	43	Avail end Dec						69
Total		101	393	100+						661

Percentage dispatched by region (Based on seasonal forecast - 2007)

