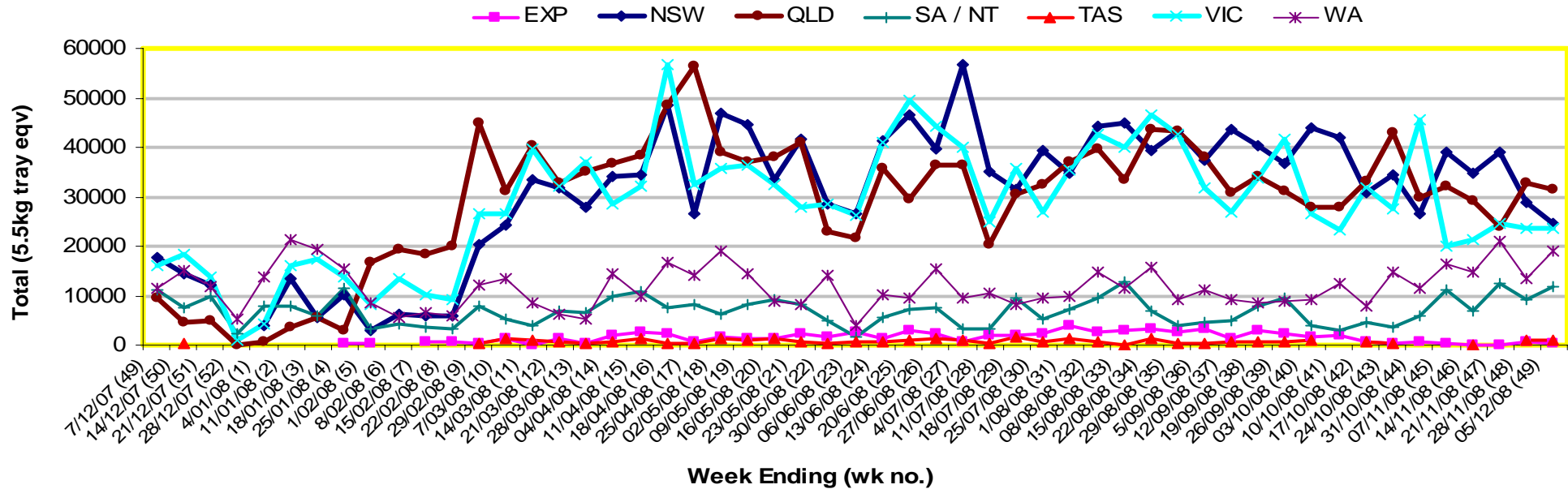


# INFOCADO WEEKLY REPORT: 29th November - 5th December 2008 (Wk 49)

## Industry Dispatches 29th November - 5th December 2008 (Wk 49)

Dest. State	5.5kg										5.5kg Total	Bulk 10Kg	P/PK Kg	Other Kg	5.5Kg Eqv Trays All Total
	<16	16	18	20	22	23	25	28	28+						
EXP								111	177	288					288
NSW	52	1,600	3,351	4,294	102	3,501	2,751	2,202	30	17,883	3,645				24,510
QLD	98	852	4,430	5,906	626	5,093	4,252	1,766	29	23,052	3,758	7,760	420		31,372
SA / NT	8	21	138	1,425	13	2,676	4,102	372		8,755	606	10,000			11,675
TAS								890		890					890
VIC	975	1,266	6,130	4,866	114	3,308	2,013	1,388	12	20,072	1,898				23,523
WA		392	946	2,253		4,346	4,531	1,535	47	14,050	2,269	5,000			19,084
<b>Total</b>	<b>1,133</b>	<b>4,131</b>	<b>14,995</b>	<b>18,744</b>	<b>855</b>	<b>18,924</b>	<b>18,539</b>	<b>7,374</b>	<b>295</b>	<b>84,990</b>	<b>12,176</b>	<b>22,760</b>	<b>420</b>		<b>111,342</b>

### Throughput Australian avocados by destination State Throughput 1st January 2008 to date = 5,548,220 5.5kg tray eqv



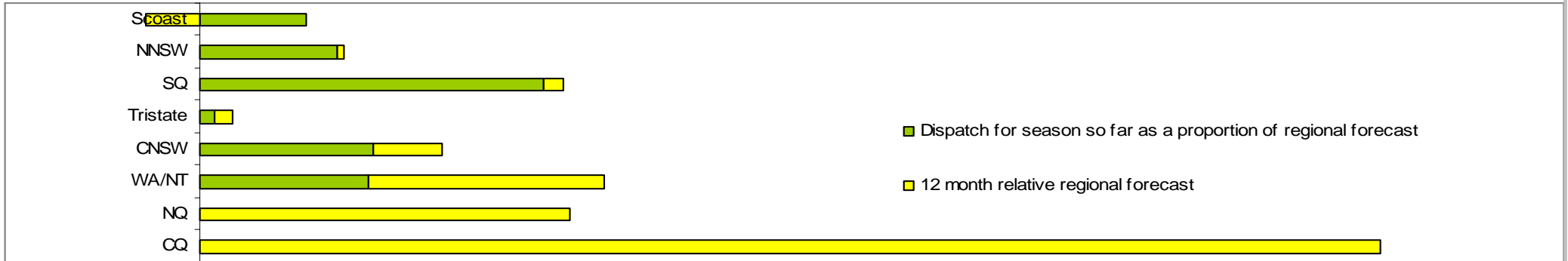
### Comments from the CEO

- Volumes continue to sit around 100,000 to 120,000 trays per week of Australian fruit into the market each week, even with the lower forecasts.
- The Infocado system continues to see new contributors participate with over 130 packhouse contributors over the full season and between 15 to 20 wholesaler contributors. Only contributors receive the weekly report.
- **Please note that the dates for data submission over the Christmas/New Year period are all as per normal.**

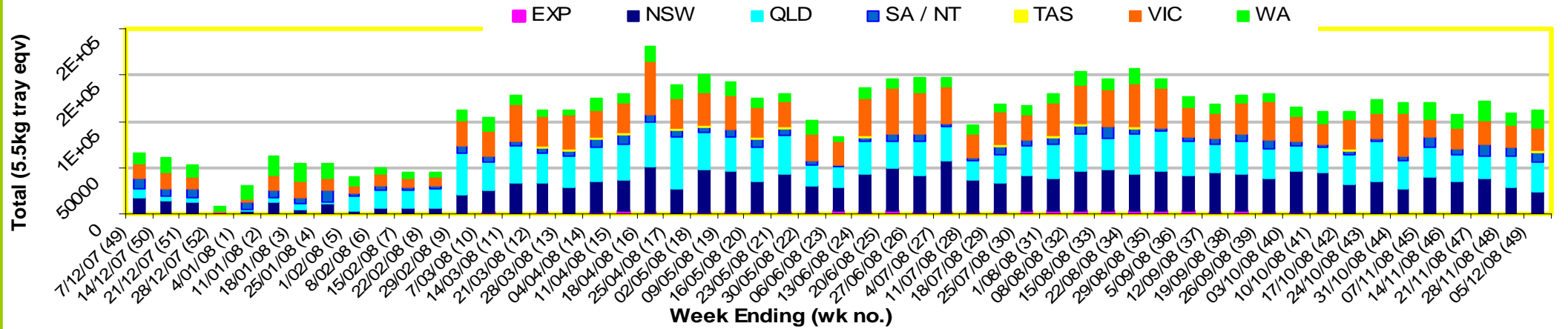




Percentage dispatched by region (Based on seasonal forecast - 2008)



Throughput Australian avocados by destination State  
Throughput 1st January 2008 to date = 5,548,220 5.5kg tray eqv



Week 49 contributors—Packhouses

- |                                      |                           |
|--------------------------------------|---------------------------|
| Advance Packing & Marketing Services | Midcoast Avocados         |
| AvoLand                              | Mt Binga Orchards Pty Ltd |
| Avonova                              | Natures Fruit Company     |
| C F Fechner                          | One Harvest               |
| Chinoola Orchards                    | Perseverance Farming Co   |
| Coastal Avocados                     | Rob Farnsworth Pty Ltd    |
| Delroy Orchards                      | Summerland HWNS           |
| DG & CJ Kafer                        | Sunfresh                  |
| DJ & BD Tottenham                    | Sunnyspot Packhouse PL    |
| Green Nugget Orchards                | Sunrise Avocados          |
| Jirel Holdings                       | Tam MT Farm Management    |
| Mariners Rest                        | VP & EA Farrell           |
| Merrinee Farms                       | WJ Row                    |

Week 49 contributors—Wholesalers

- |                                   |                                       |
|-----------------------------------|---------------------------------------|
| Barkers (Melbourne)               | Murray Bros (Brisbane)                |
| Costa Exchange Trading (Adelaide) | Premier Fruits Pty Ltd (Melbourne)    |
| Costa Exchange Trading (Brisbane) | Quality Produce International (Perth) |
| Dykes Bros (Melbourne)            | Romeos Marketing (Brisbane)           |
| Etherington (Perth)               | Sculli & Co Pty Ltd (Melbourne)       |
| Exotic Fruit Traders (Sydney)     | The La Manna Group (Adelaide)         |
| Kelly's (Melbourne)               | The La Manna Group (Brisbane)         |
| Moraitis (Melbourne)              | The La Manna Group (Melbourne)        |
| Moraitis (Sydney)                 | United Fresh (Adelaide)               |

**Sales Report including Direct Sales from Packhouses, Wholesale Sales and Stock on Hand at Wholesale Level**

	Trays 5.5kg eqv (incl. Mod6 & P84)				Bulk 10kg Cartons					Pre-Pack Kg					Total (5.5kg eqv)			
	Hass	Shepard	Other	Total	Hass	Shepard	Other	Total	5.5kg eqv	Hass	Shepard	Other	Total	5.5kg eqv	Hass	Shepard	Other	Total
<b>NSW</b>																		
Total supermarket sales																		
Total non supermarket sales	# Detail not included because currently not enough NSW wholesale data in the system																	
Total exports																		
Total sales	14,829			14,829	1,459			1,459	2,653									17,482
Total stock on hand																		
<b>QLD</b>																		
Total supermarket sales	13,587		250	13,837	396		31	427	776	5,493			5,493	999	15,306		306	15,612
Total non supermarket sales	16,273		42	16,315	458			458	833						17,105		42	17,148
Total exports	288			288											288			288
Total sales	30,148		292	30,440	854		31	885	1,609	5,493			5,493	999	32,700		348	33,048
Total stock on hand	37,695		749	38,445	198			198	360	36			36	7	38,062		749	38,811
<b>SA &amp; TAS</b>																		
Total supermarket sales	11,805			11,805	15			15	27	10,138			10,138	1,843	13,676			13,676
Total non supermarket sales	4,746		13	4,759	597			597	1,085						5,831		13	5,844
Total exports																		
Total sales	16,551		13	16,564	612			612	1,113	10,138			10,138	1,843	19,507		13	19,520
Total stock on hand #	10,946		806	11,752	888			888	1,615	18			18	3	12,564		806	13,370
<b>VIC</b>																		
Total supermarket sales	3,825			3,825	59			59	107						3,932			3,932
Total non supermarket sales	11,374		110	11,484	896			896	1,629						13,003		110	13,113
Total exports																		
Total sales	15,199		110	15,309	955			955	1,736						16,936		110	17,046
Total stock on hand	24,028		521	24,549	1,011			1,011	1,838						25,866		521	26,387
<b>WA</b>																		
Total supermarket sales																		
Total non supermarket sales	# Detail not included because currently not enough WA wholesale data in the system																	
Total exports																		
Total sales	9,461		104	9,565	591		86	677	1,231	5,000			5,000	909	11,445		260	11,705
Total stock on hand #																		
<b>TOTAL</b>																		
Total supermarket sales	35,862		298	36,160	470		31	501	911	20,631			20,631	3,751	40,468		354	40,822
Total non supermarket sales	50,038		221	50,259	4,001		86	4,087	7,431						57,312		377	57,690
Total exports	288			288											288			288
Total sales	86,188		519	86,707	4,471		117	4,588	8,342	20,631			20,631	3,751	98,068		732	98,800
Total stock on hand	91,935		2,198	94,134	3,132		169	3,301	6,002	54			54	10	97,640		2,506	100,145

**Weekly National Sales**

