



# INFOCADO WEEKLY REPORT

15th to 21st December 2007 (Wk 51)



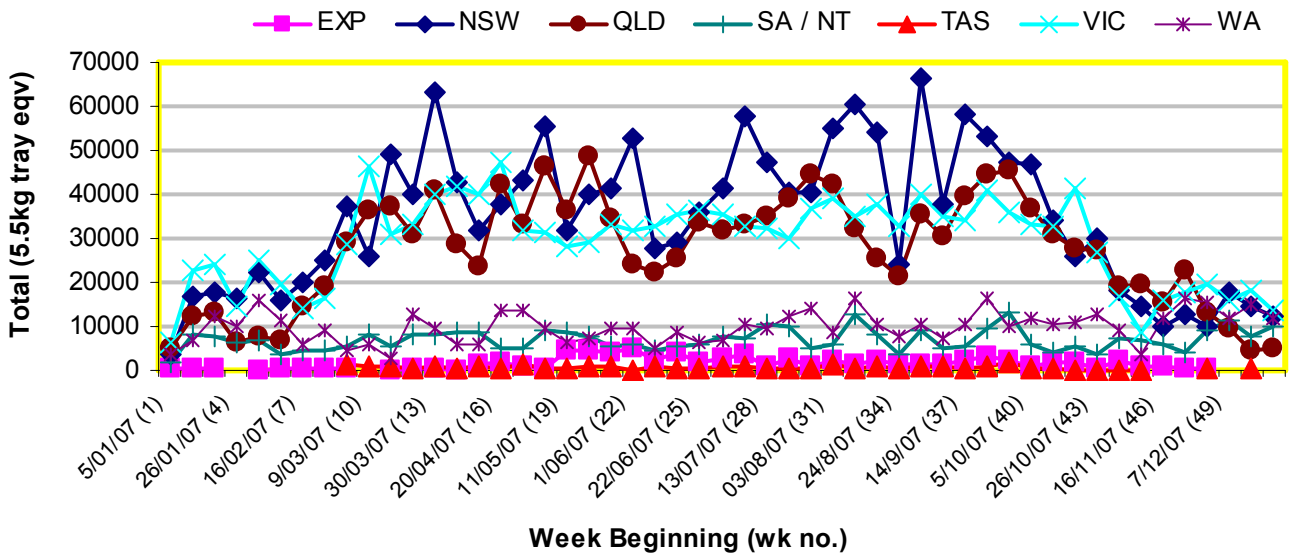
Green shading indicates dispatch data

Yellow shading indicates forecast data

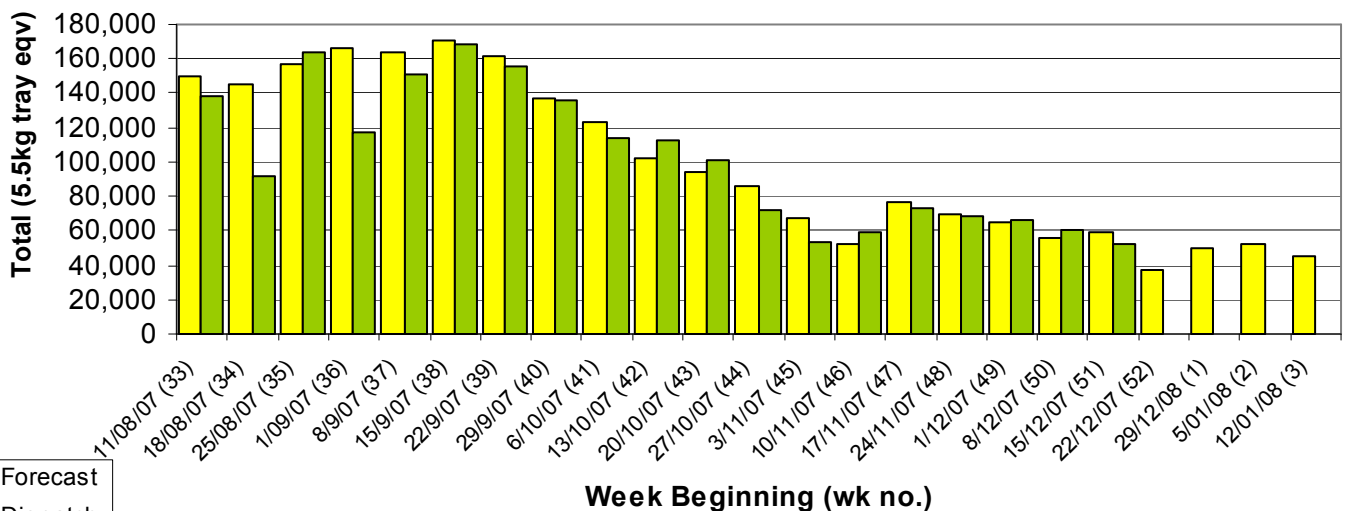
## Industry Dispatches 15th to 21st December (Wk 51)

| Dest. State  | 5.5kg      | 5.5kg        | 5.5kg        | 5.5kg        | 5.5kg     | 5.5kg        | 5.5kg        | 5.5kg        | 5.5kg     | 5.5kg         | Bulk         | P/PK | Other     | 5.5Kg Eqv Trays All |
|--------------|------------|--------------|--------------|--------------|-----------|--------------|--------------|--------------|-----------|---------------|--------------|------|-----------|---------------------|
|              | <16        | 16           | 18           | 20           | 22        | 23           | 25           | 28           | 28+       | Total         | 10Kg         | Kg   | Kg        | Total               |
| EXP          |            |              |              |              |           |              |              |              |           |               |              |      |           |                     |
| NSW          | 68         | 497          | 1,166        | 1,933        |           | 1,752        | 1,531        | 1,625        |           | 8,572         | 1,936        |      | 80        | 12,107              |
| QLD          |            | 60           | 256          | 418          | 35        | 742          | 628          | 889          | 13        | 3,041         | 980          |      |           | 4,823               |
| SA / NT      | 11         | 46           | 676          | 1,128        |           | 1,242        | 2,097        | 2,173        |           | 7,373         | 1,417        |      |           | 9,949               |
| TAS          |            |              |              |              |           |              |              |              |           |               |              |      |           |                     |
| VIC          | 23         | 417          | 1,134        | 2,472        | 30        | 2,110        | 1,664        | 1,542        | 37        | 9,429         | 2,418        |      |           | 13,825              |
| WA           |            | 20           | 173          | 1,575        |           | 3,657        | 2,926        | 1,347        |           | 9,698         | 1,130        |      |           | 11,753              |
| <b>Total</b> | <b>102</b> | <b>1,040</b> | <b>3,405</b> | <b>7,526</b> | <b>65</b> | <b>9,503</b> | <b>8,846</b> | <b>7,576</b> | <b>50</b> | <b>38,113</b> | <b>7,881</b> |      | <b>80</b> | <b>52,457</b>       |

## Throughput Australian avocados by destination State Throughput 1st January 2007 to date = 5,615,464 5.5kg tray eqv



## Dispatch vs weekly forecast for Australian Avocados - all varieties and all packs (11th August 2007 to 18th January 2008)



### Major Capital City Weather Report – week ahead

| City      | Tue | Wed | Thu | Fri | Public Hols                               | School Holidays   |
|-----------|-----|-----|-----|-----|---|-------------------|
| Brisbane  | 27° | 26° | 26° | 27° | December 25-26<br>Christmas & Boxing Days | 15th Dec-28th Jan |
| Melbourne | 29° | 26° | 30° | 33° | December 25-26<br>Christmas & Boxing Days | 22nd Dec-28th Jan |
| Perth     | 38° | 40° | 33° | 29° | December 25-26<br>Christmas & Boxing Days | 14th Dec—3rd Feb  |
| Sydney    | 22° | 24° | 27° | 27° | December 25-26<br>Christmas & Boxing Days | 22nd Dec—28th Jan |

### Forecast Data (Week 51-3)

| Variety                | Trays - Total | Bulk         | P/Pk       | Other      | All - Total   |
|------------------------|---------------|--------------|------------|------------|---------------|
|                        | 5.5Kg Eqv     | 10Kg         | Kg         | Kg         | 5.5Kg Eqv     |
| Week 51—begin 15/12/07 |               |              |            |            |               |
| Gwen                   | 1,730         | 115          |            |            | 1,939         |
| Hass                   | 42,521        | 5,466        | 250        | 100        | 52,522        |
| Lamb Hass              | 220           | 20           |            |            | 256           |
| Reed                   | 4,300         | 260          |            | 350        | 4,837         |
| Wurtz                  | 20            | 1            |            |            | 22            |
| <b>Week Total</b>      | <b>48,791</b> | <b>5,862</b> | <b>250</b> | <b>450</b> | <b>59,576</b> |
| Week 52—begin 22/12/07 |               |              |            |            |               |
| Gwen                   | 1,500         | 90           |            |            | 1,664         |
| Hass                   | 26,188        | 4,794        | 150        |            | 34,931        |
| Lamb Hass              | 190           | 10           |            | 100        | 226           |
| Reed                   | 600           | 60           |            |            | 709           |
| <b>Week Total</b>      | <b>28,478</b> | <b>4,954</b> | <b>150</b> | <b>100</b> | <b>37,530</b> |
| Week 1—begin 29/12/07  |               |              |            |            |               |
| Gwen                   | 1,300         | 70           |            |            | 1,427         |
| Hass                   | 38,088        | 5,020        | 200        |            | 47,251        |
| Lamb Hass              | 220           | 20           |            |            | 256           |
| Reed                   | 500           | 60           |            |            | 609           |
| <b>Week Total</b>      | <b>40,108</b> | <b>5,170</b> | <b>200</b> | <b>0</b>   | <b>49,544</b> |
| Week 2— begin 5/01/08  |               |              |            |            |               |
| Gwen                   | 1,100         | 90           |            |            | 1,264         |
| Hass                   | 39,738        | 5,390        | 150        |            | 49,565        |
| Lamb Hass              | 220           | 20           |            |            | 256           |
| Reed                   | 650           | 70           |            |            | 777           |
| <b>Week Total</b>      | <b>41,708</b> | <b>5,570</b> | <b>150</b> | <b>0</b>   | <b>51,862</b> |
| Week 3— begin 5/01/08  |               |              |            |            |               |
| Gwen                   | 1,400         | 100          |            |            | 1,582         |
| Hass                   | 33,300        | 5,074        |            |            | 42,525        |
| Lamb Hass              | 220           | 20           |            |            | 256           |
| Reed                   | 600           | 60           |            |            | 709           |
| <b>Week Total</b>      | <b>35,520</b> | <b>5,254</b> | <b>0</b>   | <b>0</b>   | <b>45,073</b> |

### Dispatch Data (Week 51—begin 5/12/07)

| Variety      | Trays         | Bulk         | P/PK | Other     | 5.5Kg Eqv     |
|--------------|---------------|--------------|------|-----------|---------------|
|              | 5.5kg eqv     | 10Kg         | Kg   | Kg        | Total Trays   |
| Gwen         | 834           | 100          |      |           | 1,016         |
| Hass         | 36,812        | 7,740        |      | 80        | 50,900        |
| Lamb Hass    | 180           | 26           |      |           | 227           |
| Reed         | 146           | 2            |      |           | 150           |
| Sharwil      | 7             | 1            |      |           | 9             |
| Wurtz        | 134           | 12           |      |           | 156           |
| <b>Total</b> | <b>38,113</b> | <b>7,881</b> |      | <b>80</b> | <b>52,457</b> |

### Week 51 contributors

AvoLand  
 Avonova  
 C F Fechner  
 Chinoola Orchards  
 Coastal Avocados  
 DJ Tottenham  
 Karri ry Produce  
 Kulnura Ambrosia Avocados  
 Midcoast Avocados  
 Natures Fruit Company  
 Sunfresh  
 Sunrise Avocados  
 Tam MT Farm Management  
 VP & EA Farrell  
 WJ Row

### New Zealand Avocado Exports—Forecast v Import Statistics (5.5kg eqv trays)

| Export Dest'n             | Aug        | Sep           | Oct            | Nov             | Dec                | Jan     | Feb     | Mar     | Apr    | Total to date  |
|---------------------------|------------|---------------|----------------|-----------------|--------------------|---------|---------|---------|--------|----------------|
| <b>NZ Export Forecast</b> |            | 100,000       | 350,000        | 600,000         | 550,000            | 600,000 | 450,000 | 140,000 | 10,000 | 2,800,000      |
| <b>Australia</b>          | 355        |               | 163,000        | 471,000         |                    |         |         |         |        | 634,355        |
| <b>USA</b>                |            | 51,500        | 71,500         | 26,500          | 78,000 to 16/12/07 |         |         |         |        | 227,500        |
| <b>Japan</b>              |            | 26,000        | 43,000         | Avail end Dec   |                    |         |         |         |        | 69,000         |
| <b>Total</b>              | <b>355</b> | <b>77,500</b> | <b>277,500</b> | <b>497,500+</b> | <b>78,000+</b>     |         |         |         |        | <b>930,855</b> |

### Percentage dispatched by region (Based on seasonal forecast - 2007)

