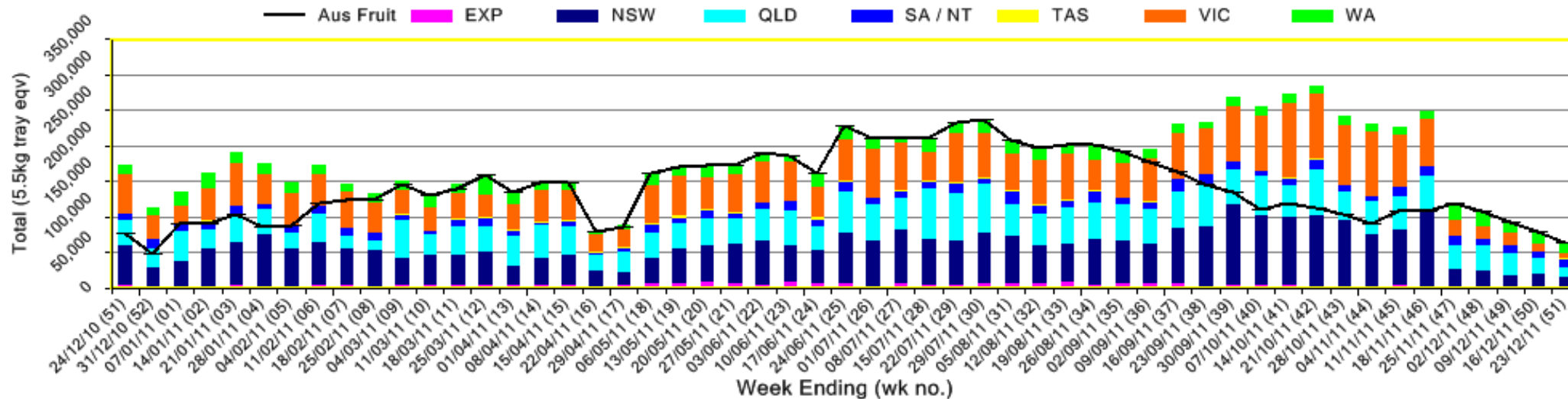


INFOCADO WEEKLY REPORT: 17th - 23rd December 2011 (Wk 51)

Industry Dispatches By Destination State and Count Size : 17th December - 23rd December 2011 (Wk 51)

Dest. State	5.5kg	5.5kg	5.5kg	5.5kg	5.5kg	5.5kg	5.5kg	5.5kg	5.5kg	5.5kg	Trays - Total	Bulk	Other	5.5Kg Eqv
	<16	16	18	20	22	23	25	28	28+	5.5Kg Eqv	10Kg	Kg	Total	
EXP									1,256	755	2,011	354		2,655
NSW	1,086	2,193	3,770	845	456	490	294	350			9,484	1,507		12,224
QLD	413	721	2,121	1,584	195	854	1,553	725	444		8,610	2,453	350	13,134
SA / NT		144	2,891	4,047	1,672	1,890	2,223	261			13,128			13,128
TAS	240										240			240
VIC	46	661	2,672	1,090	183	803	453	469	97		6,474	844		8,009
WA	172	629	1,050	2,540		3,613	2,929	953			11,886	821		13,379
Total	1,957	4,348	12,504	10,106	2,506	7,650	7,452	4,014	1,296	51,833	5,979	350	62,768	

Throughput Australian & NZ avocados by destination state
Throughput 1st January 2011 to date = 9,142,393 5.5kg tray eqv



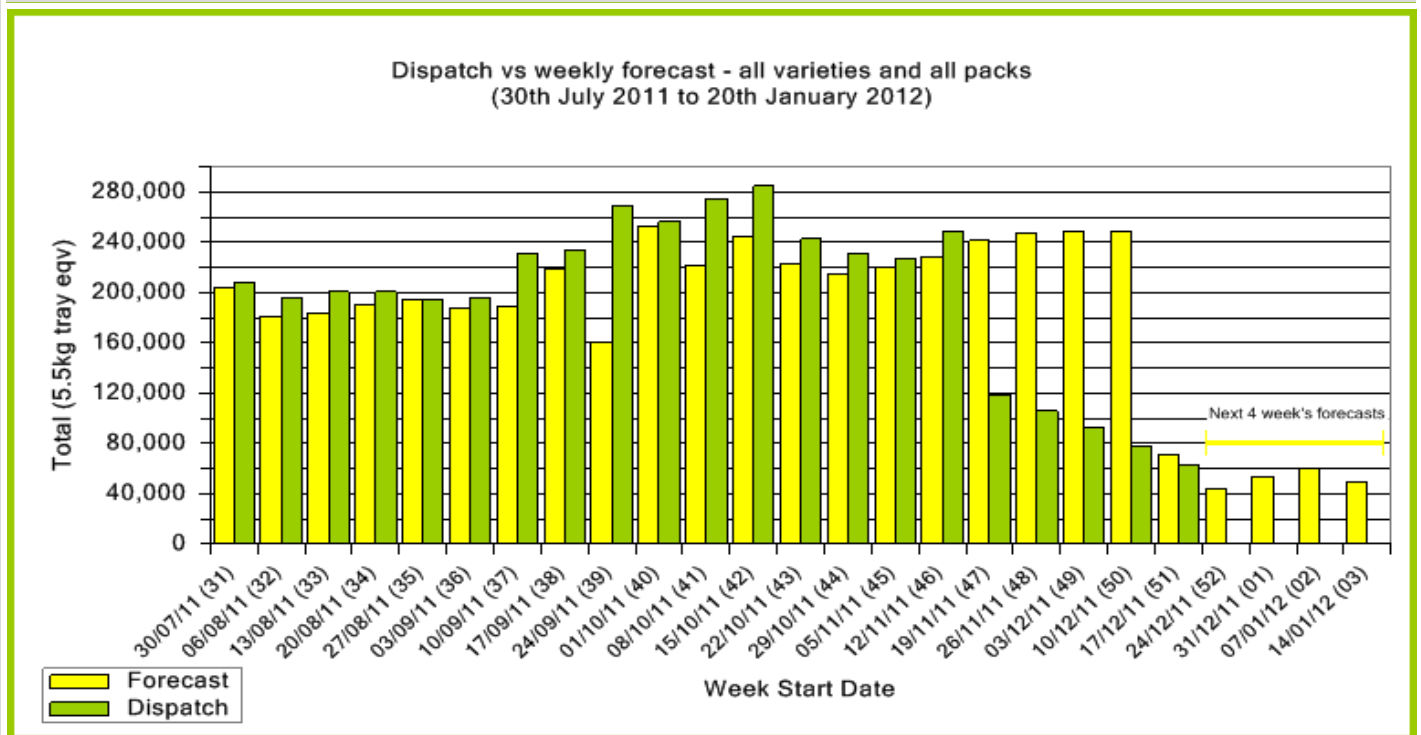
Comments From the CEO

- NZ dispatches and forecasts are not included in this week's report.
- The Team at Avocados Australia would like to wish everyone a very happy and safe New Years.
- Contributors are reminded that the Infocado system will be running as usual over the festive break. Data will be due in on Wednesday 4th January with the report due out on Thursday 5th January.



Forecast Data (Week 51 - 3)			
Variety	Trays - Total	Bulk	All - Total
	5.5Kg Eqv	10Kg	5.5Kg Eqv
Week 51 - begin 17/12/2011			
Gwen	200	90	364
Hass	57,270	6,510	69,106
Lamb Hass	650	80	795
Reed	100		100
Wurtz	20	500	929
Week Total	58,240	7,180	71,295
Week 52 - begin 24/12/2011			
Gwen	200	70	327
Hass	33,754	5,192	43,194
Lamb Hass	250		250
Reed	471	50	562
Wurtz	10		10
Week Total	34,685	5,312	44,343
Week 1 - begin 31/12/2011			
Gwen	600	140	855
Hass	36,390	8,400	51,663
Lamb Hass	450	50	541
Reed	742		742
Wurtz	5		5
Week Total	38,187	8,590	53,805
Week 2 - begin 07/01/2012			
Gwen	800	150	1,073
Hass	42,740	8,576	58,333
Lamb Hass	450	100	632
Reed	742		742
Week Total	44,732	8,826	60,779
Week 3 - begin 14/01/2012			
Gwen	600	225	1,009
Hass	38,000	5,550	48,091
Lamb Hass	450	100	632
Week Total	39,050	5,875	49,732

Green shading indicates dispatch data		Yellow shading indicates forecast data		
Dispatch Data (Week 51 - begin 17/12/2011)				
Variety	Trays	Bulk	Other	5.5Kg Eqv
	5.5Kg Eqv	10Kg	Kg	Total Trays
Gwen	298	81		445
Hass	49,949	5,775		60,449
Lamb Hass	528	71		657
Reed	932	44		1,012
Sharwil	126	8	350	205
Total	51,833	5,979	350	62,768



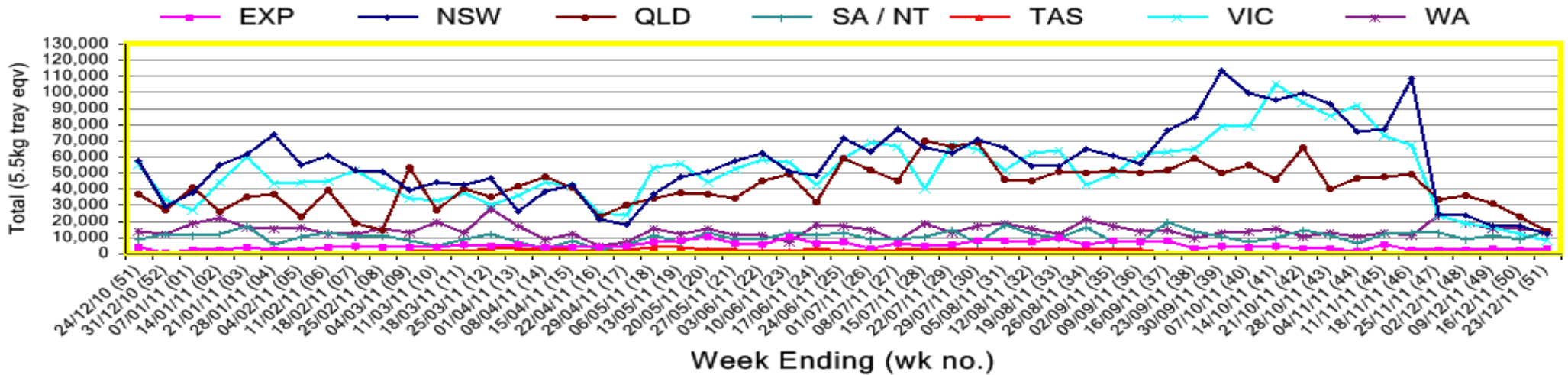
New Zealand Avocado Exports—Forecast v Import Statistics (5.5kg eqv trays) August 2011-April 2012										
Export Dest'n	Aug	Sep	Oct	Nov	Dec	Jan	Feb	Mar	Apr	Total to date
NZ Export to Australia Forecast	33,520	313,264	508,152	667,235	591,141	660,876	305,159	26,101	10,208	3,115,656
Australia		314,209	617,690	655,540						1,587,439
USA		11,782	47,380	36,098						95,260
Japan	818	24,196	106,337	123,344						254,695
Total	818	350,187	771,407	814,982						1,937,394

Percentage dispatched by region (Based on seasonal forecast - 2011)

■ Dispatch for season so far as a proportion of regional forecast
■ 12 month relative regional Forecast



Throughput Australian & NZ avocados by destination state
Throughput 1st January 2011 to date = 9,142,393 5.5kg tray eqv



Week 51 contributors - Packhouses

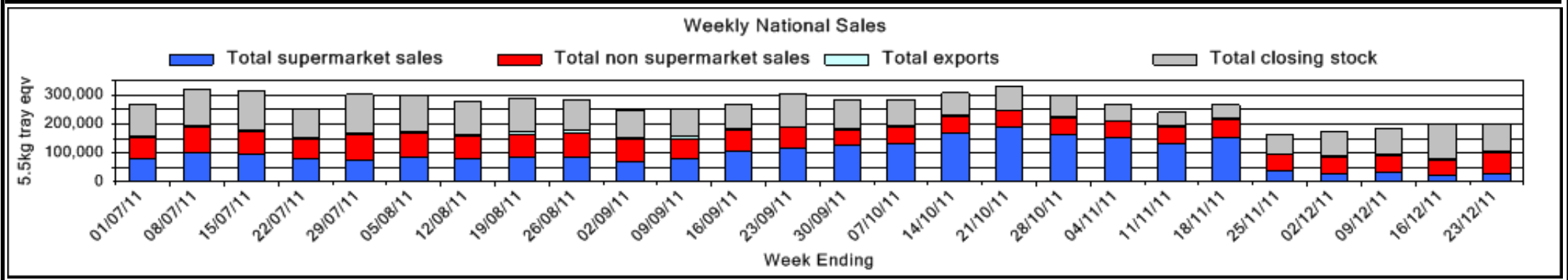
Advance Packing & Marketing Services P/L	I & A Tolson
C F Fechner	Midcoast Avocados
Chinoola Orchards	Natures Fruit Company
Chislett Developments Pty Ltd	Sunfresh
Coastal Avocados	Vitor Marketing Pty Ltd
Delroy Orchards	VP & EA Farrell

Week 51 contributors - Wholesalers

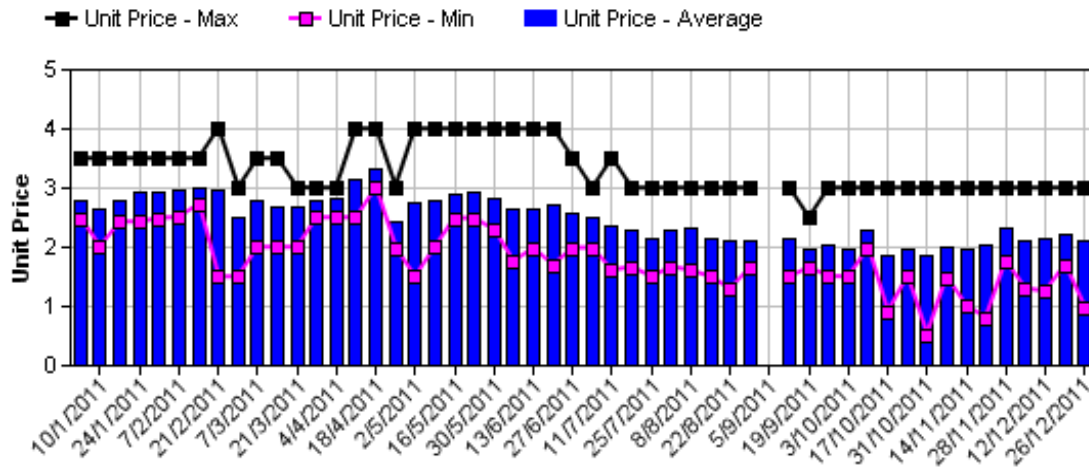
Allcrops Pty Ltd (Sydney)	Freshmax Pty Ltd (Brisbane)
Avanti Fresh Produce Pty Ltd (Melbourne)	Kelly's (Melbourne)
Costa Farms (Adelaide)	Murray Bros (Brisbane)
Costa Farms (Brisbane)	Sculli & Co Pty Ltd (Melbourne)
Costa Farms (Perth)	Sinclair & Antico (Aust) Pty Ltd (Sydney)
Dykes Bros (Melbourne)	The La Manna Group (Adelaide)
Etherington (Perth)	The La Manna Group (Brisbane)
Exotic Fruit Traders (Sydney)	The La Manna Group (Melbourne)
Fresh Choice WA Pty Ltd (Perth)	United Fresh (Adelaide)
Fresh Express Produce Pty Ltd (Perth)	

Sales Report including Direct Sales from Packhouses, Wholesale Sales and Stock on Hand at Wholesale Level

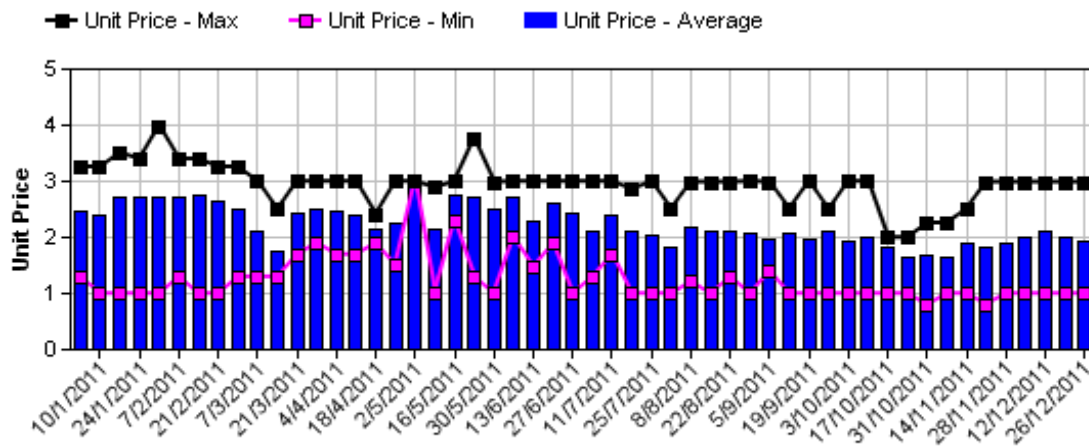
	Trays 5.5kg eqv (incl. Mod6 & P84)				Bulk 10Kg Cartons					Pre-Pack Kg					Total (5.5Kg Eqv)			
	Hass	Shepard	Other	Total	Hass	Shepard	Other	Total	5.5Kg Eqv	Hass	Shepard	Other	Total	5.5Kg Eqv	Hass	Shepard	Other	Total
NSW																		
Total supermarket sales	36			36	16			16	29						65			65
Total non supermarket sales	14,645			14,645	1,311			1,311	2,384						17,029			17,029
Total exports																		
Total sales	14,681			14,681	1,327			1,327	2,413						17,094			17,094
Total Stock on Hand	6,223			6,223	317			317	576						6,799			6,799
QLD																		
Total supermarket sales	4,184			4,184	116			116	211						4,395			4,395
Total non supermarket sales	22,893		902	23,795	939		119	1,058	1,924						24,600	1,118		25,719
Total exports	500			500											500			500
Total sales	27,577		902	28,479	1,055		119	1,174	2,135						29,495	1,118		30,614
Total Stock on Hand	22,138		602	22,740	1,766		89	1,855	3,373						25,349		764	26,113
SA & TAS																		
Total supermarket sales	15,869			15,869	21			21	38						15,907			15,907
Total non supermarket sales	5,086		26	5,112	677		2	679	1,235						6,317		30	6,347
Total exports																		
Total sales	20,955		26	20,981	698		2	700	1,273						22,224		30	22,254
Total Stock on Hand	20,880		124	21,004	1,313		600	1,913	3,478						23,267		1,215	24,482
VIC																		
Total supermarket sales																		
Total non supermarket sales	10,294		305	10,600	827		308	1,135	2,064						11,798		865	12,663
Total exports																		
Total sales	10,294		305	10,600	827		308	1,135	2,064						11,798		865	12,663
Total Stock on Hand	29,409		143	29,552	902		16	918	1,669						31,049		172	31,221
WA																		
Total supermarket sales	7,983			7,983	214			214	389						8,372			8,372
Total non supermarket sales	8,434			8,434	1,700			1,700	3,091						11,525			11,525
Total exports	1,511			1,511	354			354	644						2,155			2,155
Total sales	17,928			17,928	2,268			2,268	4,124						22,052			22,052
Total Stock on Hand	7,267			7,267	836			836	1,520						8,787			8,787
Total																		
Total supermarket sales	28,072			28,072	367			367	667						28,739			28,739
Total non supermarket sales	61,352		1,233	62,586	5,454		429	5,883	10,696						71,269		2,013	73,282
Total exports	2,011			2,011	354			354	644						2,655			2,655
Total sales	91,435		1,233	92,669	6,175		429	6,604	12,007						102,663		2,013	104,676
Total Stock on Hand	85,917		869	86,786	5,134		705	5,839	10,616						95,251		2,151	97,402



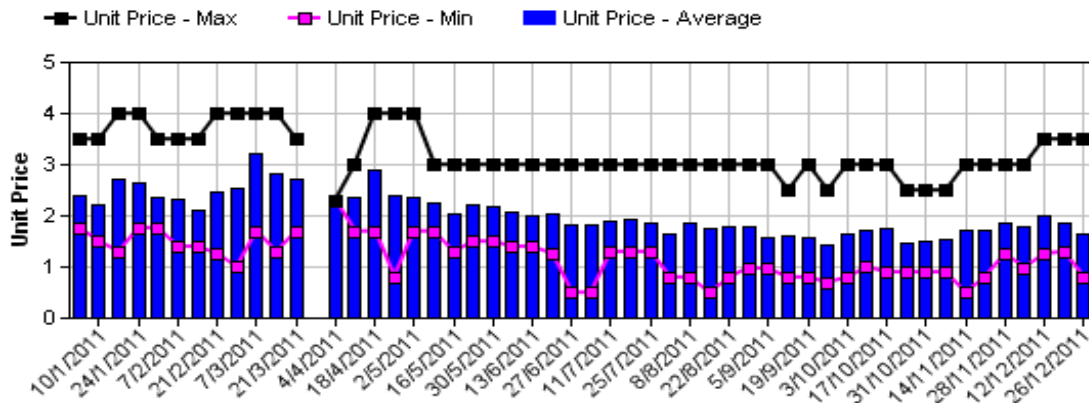
Hass Avocado Average Retail Prices - Sydney



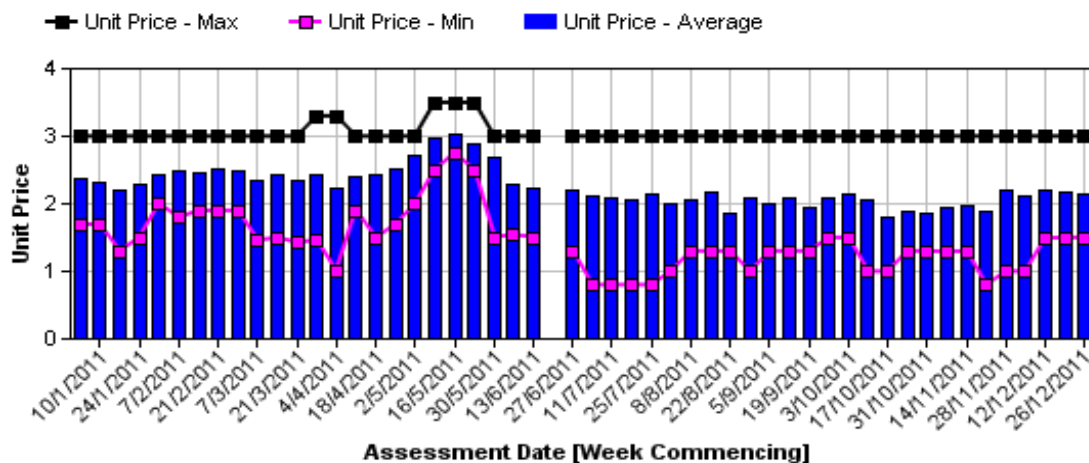
Hass Avocado Average Retail Prices - Melbourne



Hass Avocado Average Retail Prices - Brisbane

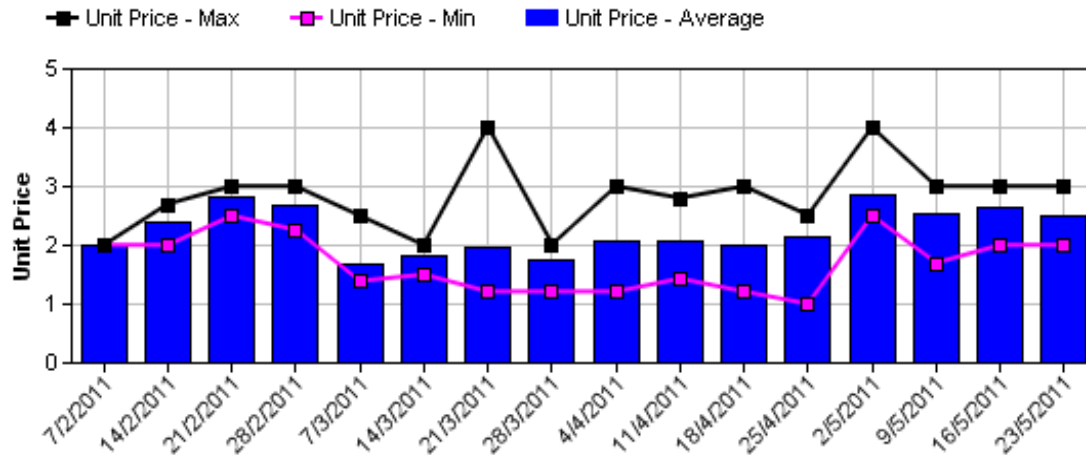


Hass Avocado Average Retail Prices - Perth

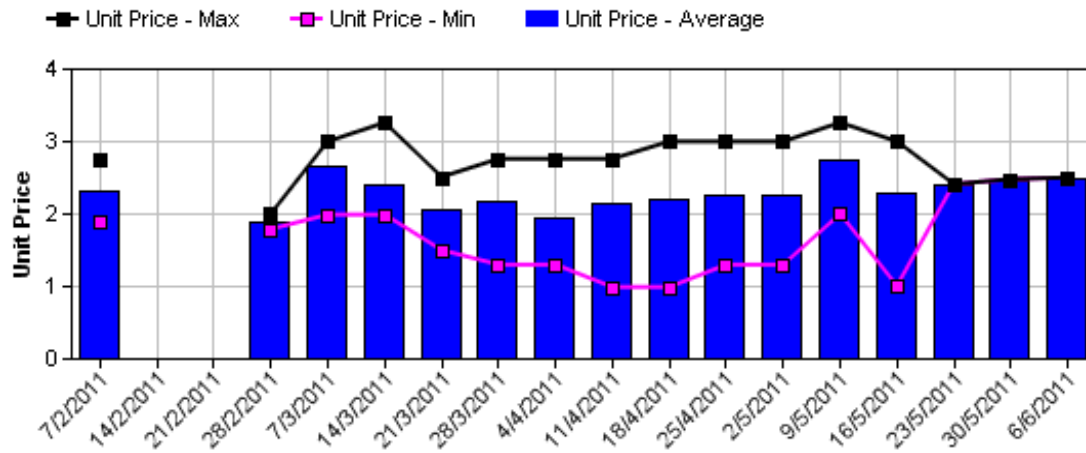


Assessment Date [Week Commencing]

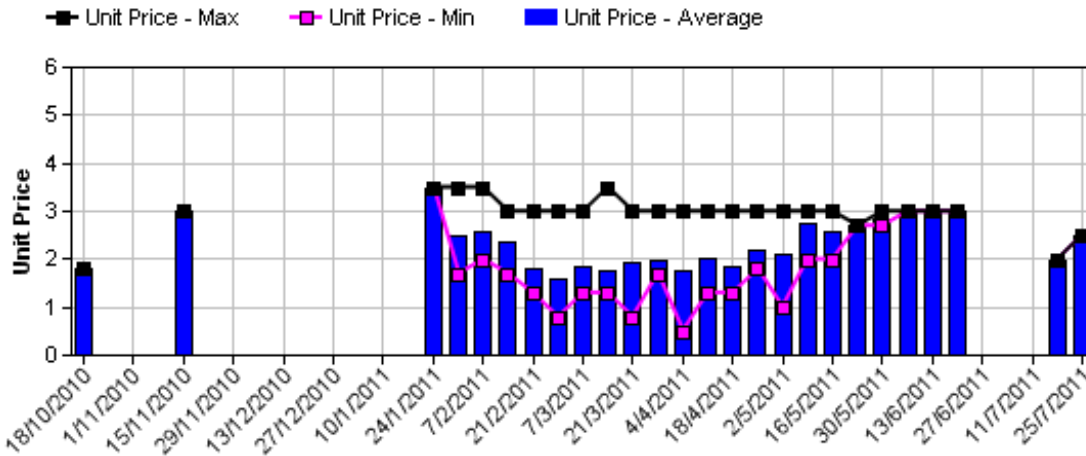
Shepard Avocado Average Retail Prices - Sydney



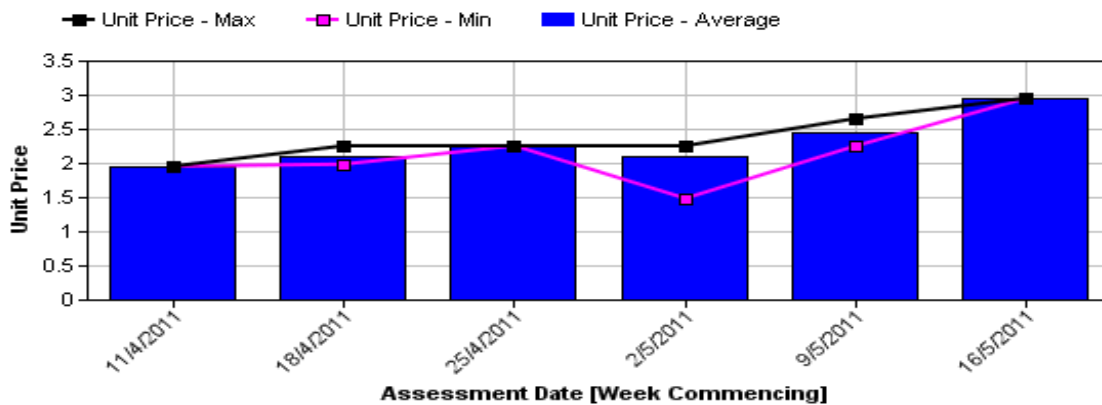
Shepard Avocado Average Retail Prices - Melbourne



Shepard Avocado Average Retail Prices - Brisbane



Shepard Avocado Average Retail Prices - Perth



Retail Prices by City, Store and Variety - 28th December 2011

Store	Var	Av Wt (g)	Unit Price	Special	Country of Origin
SYDNEY					
Woolworths	Hass	235	0.98	Store	NZ
Woolworths	Hass	250	0.98	Store	NZ
Woolworths	Hass	215	1.48	Store	NZ
I	Hass	320	1.66	No	Mixed
I	Reed	470	1.66	No	Aus
Coles	Hass	240	1.75	Cat	NZ
Coles	Hass	285	1.75	Cat	NZ
Coles	Hass	280	1.75	Cat	NZ
IGA	Hass	245	1.99	No	NZ
I	Reed	415	2.49	No	Aus
I	Hass	300	2.49	No	Aus
I	Reed	490	2.49	No	Aus
Foodworks	Hass	300	2.49	No	Aus
I	Hass	270	2.50	Store	Mixed
IGA	Hass	275	2.50	No	Aus
I	Hass	285	2.50	Store	Mixed
I	Reed	495	2.99	No	Aus
I	Hass	325	2.99	No	Aus
I	Hass	310	2.99	No	Aus
I	Hass	270	2.99	No	Aus
BRISBANE					
Coles	Hass	260	0.80	Store	NZ
Woolworths	Hass	220	0.98	Store	Aus
Woolworths	Hass	220	0.99	Store	NS
Woolworths	Hass	170	0.99	Store	Aus
I	Hass	235	1.00	Store	Aus
IGA	Hass	220	1.29	Store	Aus
Coles	Hass	255	1.30	Store	NZ
Coles	Hass	280	1.30	No	NS
I	Hass	200	1.69	Store	NS
I	Hass	145	1.69	Store	Aus
IGA	Hass	175	1.75	No	NZ
I	Hass	285	1.99	Store	NZ
I	Wurtz	410	2.49	No	Aus
I	Hass	300	2.89	Store	Aus
I	Hass	295	2.99	Store	Aus
I	Reed	320	2.99	No	Aus
I	Wurtz	315	2.99	Store	Aus
I	Hass	275	3.49	Store	Aus

Store	Var	Av Wt (g)	Unit Price	Special	Country of Origin
MELBOURNE					
I	Hass	250	0.99	No	NS
Coles	Hass	260	1.48	Cat	NZ
Coles	Hass	285	1.48	Cat	NZ
Coles	Hass	275	1.48	Cat	NZ
IS	Hass	275	1.69	No	NZ
Safeway	Hass	275	1.98	No	NZ
Safeway	Hass	290	1.98	No	NZ
Safeway	Hass	290	1.98	No	NZ
I	Hass	260	1.99	No	Aus
I	Hass	255	1.99	No	NS
I	Hass	245	1.99	No	Aus
I	Hass	285	2.50	No	Aus
I	Hass	290	2.50	No	Aus
I	Hass	280	2.98	No	Aus
PERTH					
IGA	Hass	275	1.49	Store	Aus
I	Hass	200	1.49	Store	Aus
IS	Hass	240	1.5	Store	Aus
Woolworths	Hass	220	1.98	Store	Aus
Woolworths	Hass	240	1.98	Store	Aus
Coles	Hass	230	1.98	No	Aus
Woolworths	Hass	230	1.98	Store	Aus
IGA	Hass	240	1.99	Store	Aus
I	Hass	290	1.99	No	Aus
I	Hass	235	1.99	No	Aus
Coles	Hass	300	1.99	No	Aus
I	Hass	255	2.49	No	Aus
IGA	Hass	230	2.49	No	Aus
I	Hass	295	2.99	No	Aus
IGA	Hass	280	2.99	No	Aus

Size ranges based on 5.5kg trays	
Size	Weight Range
28	185 - 208g
25	208 - 230g
23	230 - 245g
22	245 - 263g
20	263 - 290g
18	290 - 325g
16	325 - 363g

Special Codes

Cat = fruit is on catalogue special for that city this week
 Store = fruit is on special in that store only this week

Store Codes

I = Independent Fruit and Vegetable stores
 IC = Independent Fruit and Vegetable store Chains
 IS = Independent Supermarkets

Country of Origin Codes

Aus = display sign indicates fruit is from Australia
 NZ = display sign indicates fruit is from New Zealand
 NS = display sign doesn't say where fruit is from