



# INFOCADO WEEKLY REPORT

26th January to 1st February 2008 (Wk 5)

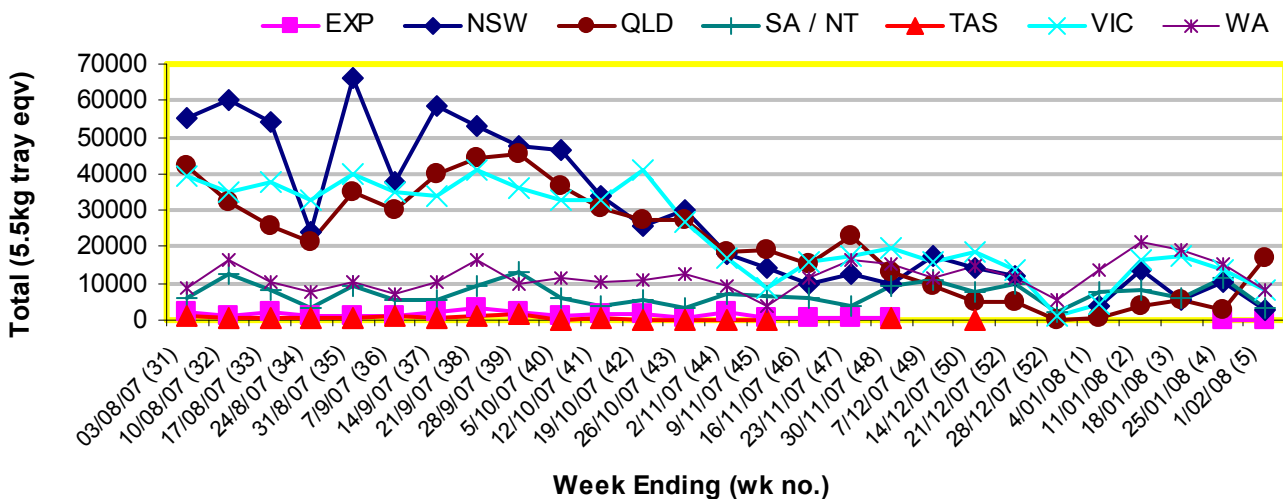
Green shading indicates dispatch data

Yellow shading indicates forecast data

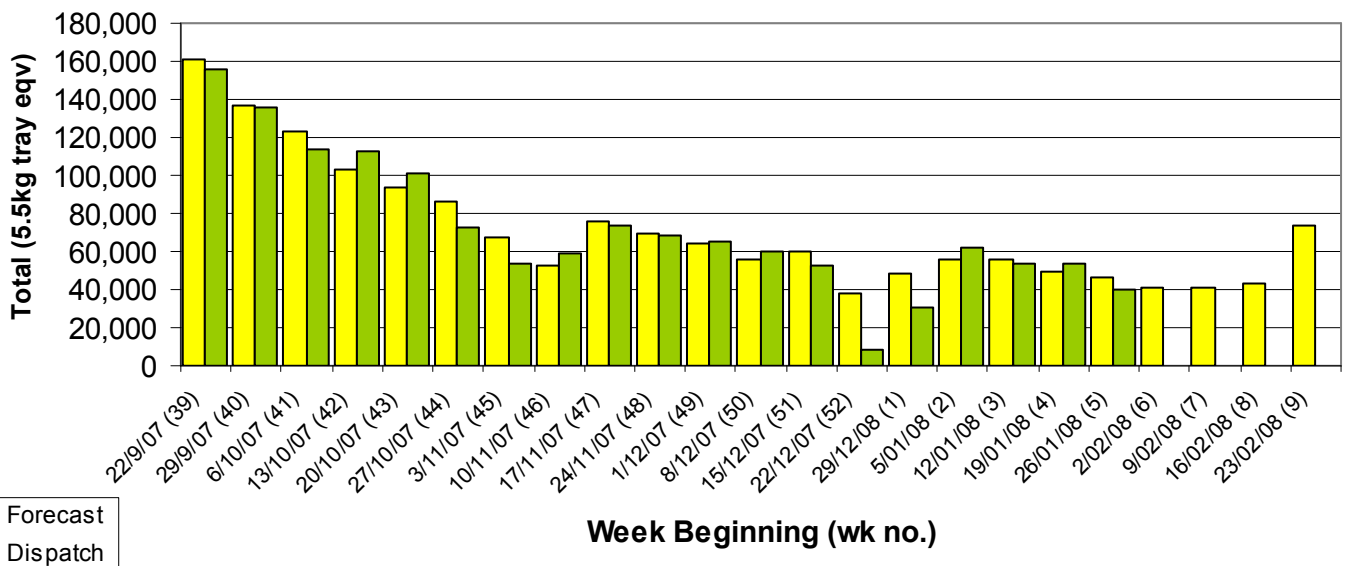
## Industry Dispatches 26th January to 1st February 2008 (Wk 5)

Dest. State	5.5kg	5.5kg	5.5kg	5.5kg	5.5kg	5.5kg	5.5kg	5.5kg	5.5kg	5.5kg	Bulk	P/PK	Other	5.5Kg Eqv Trays All
	<16	16	18	20	22	23	25	28	28+	Total	10Kg	Kg	Kg	Total
EXP									143	143	47			228
NSW	2	20	220	636	32	755	457	55		2,177	410			2,922
QLD		101	593	1,731	285	2,668	1,667	2,974	322	10,341	3,489			16,685
SA / NT		13	499	1,187		449	632	316		3,096	74			3,231
TAS														
VIC	33	323	847	2,412	55	1,321	618	551		6,160	1,072			8,109
WA		67	542	1,061		2,397	2,102	957	19	7,145	482	2,500		8,476
<b>Total</b>	<b>35</b>	<b>524</b>	<b>2,701</b>	<b>7,027</b>	<b>372</b>	<b>7,590</b>	<b>5,476</b>	<b>4,996</b>	<b>341</b>	<b>29,062</b>	<b>5,574</b>	<b>2,500</b>		<b>39,652</b>

### Throughput Australian avocados by destination State Throughput 1st January 2008 to date = 240,644 5.5kg tray eqv



### Dispatch vs weekly forecast for Australian Avocados - all varieties and all packs (22nd September 2007 to 29th February 2008)



### Major Capital City Weather Report – week ahead

City	Tue	Wed	Thu	Fri	Public Hols	School Holidays
Brisbane	27°	27°	30°	31°	Easter—21/3/08 & 24/3/08	5th Apr—13th Apr
Melbourne	25°	24°	21°	20°	Labour Day—10/3/08	21st Mar—6th Apr
Perth	32°	26°	29°	31°	Labour Day—3/3/08	12th Apr-27th Apr
Sydney	24°	25°	24°	25°	Easter—21/3/08 & 24/3/08	12th Apr—27th Apr

#### Forecast Data (Week 5-9)

Variety	Trays - Total	Bulk	P/Pk	Other	All - Total
	5.5Kg Eqv	10Kg	Kg	Kg	5.5Kg Eqv
Week 5—begin 26/01/08					
Gwen	500	10			<b>518</b>
Hass	25,779	2,504	2,000		<b>30,696</b>
Reed	873	56			<b>975</b>
Shepard	14,000	350			<b>14,636</b>
<b>Week Total</b>	<b>41,152</b>	<b>2,920</b>	<b>2,000</b>		<b>46,825</b>
Week 6—begin 2/02/08					
Hass	18,320	2,231	2,500		<b>22,831</b>
Lamb Hass	180				<b>180</b>
Reed	830	16			<b>859</b>
Shepard	15,500	1,150		400	<b>17,664</b>
<b>Week Total</b>	<b>34,830</b>	<b>3,397</b>	<b>2,500</b>	<b>400</b>	<b>41,534</b>
Week 7—begin 9/02/08					
Hass	14,650	1,391	2,500		<b>17,634</b>
Lamb Hass	120				<b>120</b>
Reed	50	16			<b>79</b>
Shepard	18,300	1,750	7,150	400	<b>22,855</b>
<b>Week Total</b>	<b>33,120</b>	<b>3,157</b>	<b>9,650</b>	<b>400</b>	<b>40,688</b>
Week 8— begin 16/02/08					
Hass	12,100	1,062	2,500		<b>14,486</b>
Lamb Hass	120				<b>120</b>
Reed	50	16			<b>79</b>
Shepard	22,500	2,200	7,150	800	<b>27,945</b>
Wurtz	100				<b>100</b>
<b>Week Total</b>	<b>34,870</b>	<b>3,278</b>	<b>9,650</b>	<b>800</b>	<b>42,730</b>
Week 9— begin 23/02/08					
Hass	5,900	342	2,500		<b>6,977</b>
Shepard	57,500	2,700	22,000	800	<b>66,554</b>
Wurtz	100				<b>100</b>
<b>Week Total</b>	<b>63,500</b>	<b>3,042</b>	<b>24,500</b>	<b>800</b>	<b>73,631</b>

#### Dispatch Data (Week 5—begin 26/01/08)

Variety	Trays	Bulk	P/PK	Other	5.5Kg Eqv
	5.5kg eqv	10Kg	Kg	Kg	Total Trays
Hass	16,713	1,702	2,500		<b>20,263</b>
Reed	106	9			<b>122</b>
Shepard	12,119	3,863			<b>19,143</b>
Wurtz	124				<b>124</b>
<b>Total</b>	<b>29,062</b>	<b>5,574</b>	<b>2,500</b>		<b>39,652</b>

#### Week 5 contributors

Avocados With Altitude  
 Avonova  
 Battistin Orchards  
 Coastal Avocados  
 Delroy Orchards  
 Gunnadoo Farm  
 Karri Country Produce  
 Lavers Orchards  
 Lone Gum Avocados  
 Mariners Rest  
 Midcoast Avocados  
 Natures Fruit Company  
 One Harvest  
 RM & KL Cornwall  
 Rocky Creek Orchards  
 Simpsons Farms  
 Sunfresh  
 Theart Farming Pty Ltd  
 VP & EA Farrell

*The volume figures contained in the "New Zealand Avocado Exports" is based on a combination of export statistics from NZ and arrival volumes into the specified market. We cross-check the various sources against each other to verify the data. When the data is checked and verified the table in this report is updated/corrected. Please note New Zealand has lowered its export crop forecast from 2.8 to 2.5 million trays.*

#### New Zealand Avocado Exports—Forecast v Import Statistics (5.5kg eqv trays)

Export Dest'n	Aug	Sep	Oct	Nov	Dec	Jan	Feb	Mar	Apr	Total to date
<b>NZ Export Forecast</b>		100,000	350,000	650,000	650,000	350,000	375,000	25,000		<b>2,500,000</b>
<b>Australia</b>	355		163,000	471,000	464,166	Avail mid Feb				<b>1,098,521</b>
<b>USA</b>		42,483	146,176	101,451	146,742	32,727				<b>469,579</b>
<b>Japan</b>	1,997	19,044	41,144	53,557	57,757	14,834+				<b>188,333</b>
<b>Total</b>	<b>2,352</b>	<b>61,527</b>	<b>350,320</b>	<b>626,008</b>	<b>668,665</b>	<b>47,561</b>				<b>1,756,433</b>

#### Percentage dispatched by region (Based on seasonal forecast - 2008)

