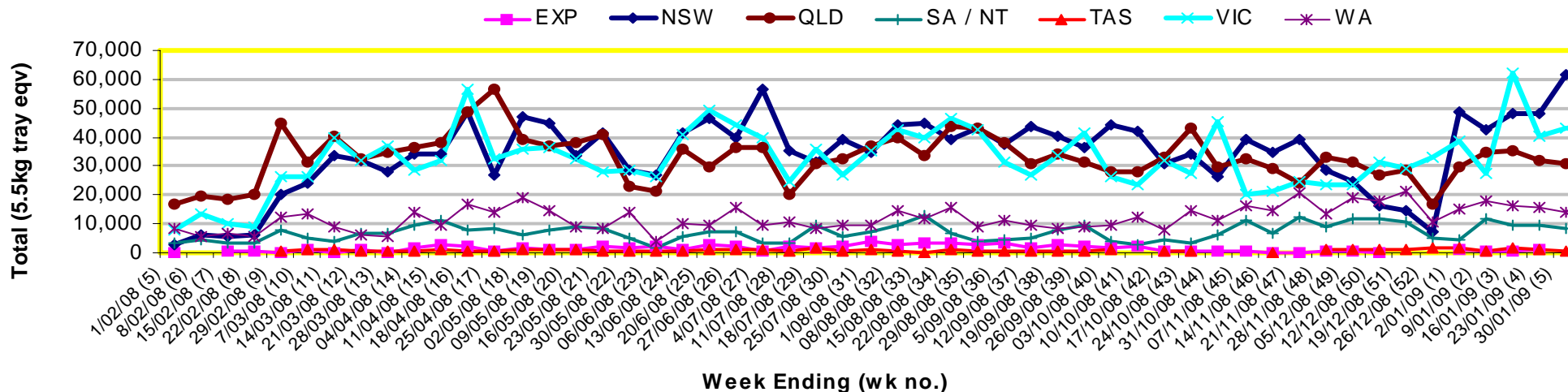


# INFOCADO WEEKLY REPORT: 24th - 30th January 2009 (Wk 5)

## Industry Dispatches 24th - 30th January 2009 (Wk 5)

Dest. State	5.5kg	5.5kg	5.5kg	5.5kg	5.5kg	5.5kg	5.5kg	5.5kg	5.5kg	5.5kg	Bulk	P/PK	Other	5.5Kg Eqv Trays All
	<16	16	18	20	22	23	25	28	28+	Total	10Kg	Kg	Kg	Total
NSW	145	3,232	9,520	14,343	146	12,982	8,893	4,418	3,781	57,460	2,282			61,609
QLD		891	2,514	5,116	666	5,033	4,973	2,144	1,775	23,112	3,929	790	1,600	30,691
SA / NT	72	250	286	1,472		1,704	2,963	368		7,115	464	2,500		8,414
TAS							593			593				593
VIC	131	2,686	7,416	13,130	152	6,484	3,971	3,473	1,337	38,780	2,423			43,185
WA	2	395	930	2,317	311	2,472	3,296	1,440	50	11,213	1,178	3,700		14,028
<b>Total</b>	<b>350</b>	<b>7,454</b>	<b>20,666</b>	<b>36,378</b>	<b>1,275</b>	<b>28,675</b>	<b>24,689</b>	<b>11,843</b>	<b>6,943</b>	<b>138,273</b>	<b>10,276</b>	<b>6,990</b>	<b>1,600</b>	<b>158,519</b>

### Throughput Australian & NZ avocados by destination State Throughput 1st January 2009 to date = 755, 605 5.5kg tray eqv



### Comments from the CEO

- The volume of dispatches is again above the forecast by about 20,000 trays.
- This week the NSW market hit a total dispatch record for the last 52 weeks.
- Sunshine Coast, Tri State and Central NSW have all about finished seasons, with Western Australia in their last stage of dispatching.
- North Queensland has begun marketing Shepard in the last two weeks.



**Forecast Data (Week 5 - 9)**

Variety	Trays - Total	Bulk	P/PK	Proc	All - Total
	5.5Kg Eqv	10Kg	Kg	Kg	5.5Kg Eqv
Week 5—begin 24/01/09					
Gwen	500	90			664
Hass	118,528	4,801	9,290		128,946
Lamb Hass	900	50			991
Reed	1,050	50			1,141
Shepard	6,473	500			7,382
<b>Week Total</b>	<b>127,450</b>	<b>5,491</b>	<b>9,290</b>		<b>139,123</b>
Week 6—begin 31/01/09					
Gwen	900	90			1,064
Hass	129,552	6,180	9,290	100	142,495
Lamb Hass	300				300
Reed	800	20			836
Shepard	28,071	230			28,489
<b>Week Total</b>	<b>159,623</b>	<b>6,520</b>	<b>9,290</b>	<b>100</b>	<b>173,185</b>
Week 7—begin 7/02/09					
Hass	122,905	5,276	9,290		134,187
Lamb Hass	600	40			673
Shepard	32,368	460	4,000		33,931
<b>Week Total</b>	<b>155,873</b>	<b>5,776</b>	<b>13,290</b>		<b>168,791</b>
Week 8—begin 14/02/09					
Hass	83,851	2,648	5,000		89,575
Lamb Hass	200	20			236
Shepard	31,913	760	16,000		36,204
<b>Week Total</b>	<b>115,964</b>	<b>3,428</b>	<b>21,000</b>		<b>126,015</b>
Week 9—begin 21/02/09					
Hass	65,712	2,466	5,000		71,105
Shepard	30,929	700	17,000		35,293
<b>Week Total</b>	<b>96,641</b>	<b>3,166</b>	<b>22,000</b>		<b>106,397</b>

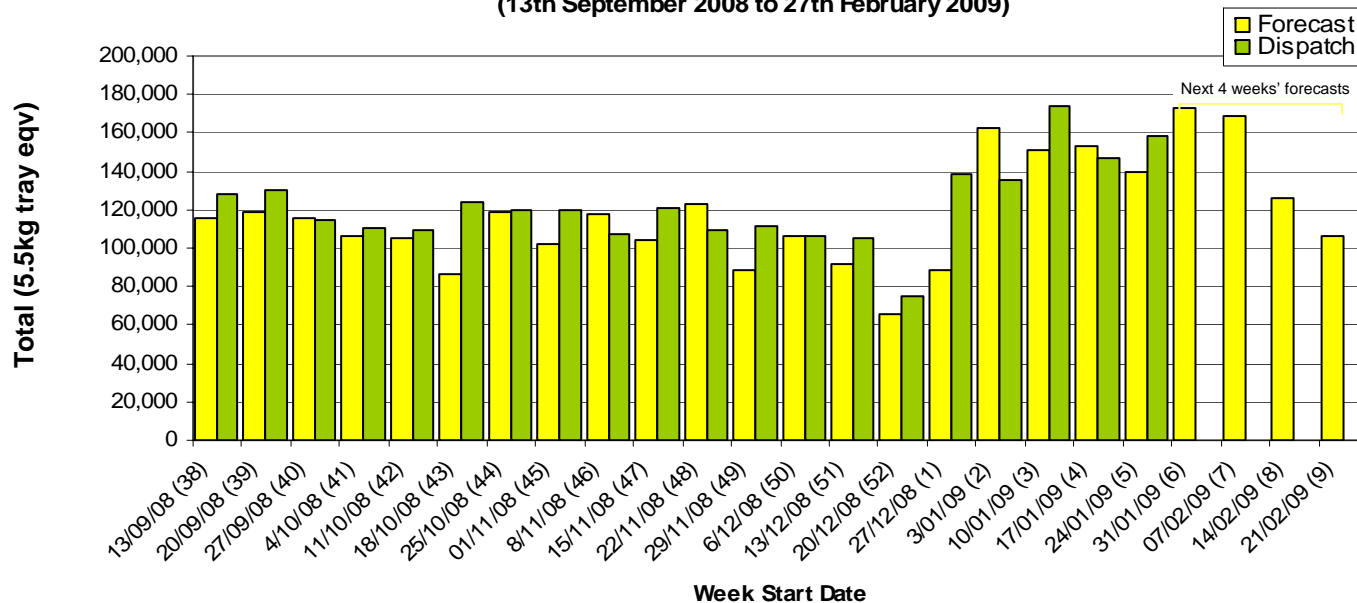
Green shading indicates dispatch data

Yellow shading indicates forecast data

**Dispatch Data (Week 5 - begin 24/01/09)**

Variety	Trays	Bulk	P/PK	Other	5.5Kg Eqv
	5.5kg eqv	10Kg	Kg	Kg	Total Trays
Gwen	149	85			304
Hass	128,083	9,519	6,990		146,661
Lamb Hass	1,124	144			1,386
Reed	138	80			283
Shepard	8,779	448		1,600	9,885
<b>Total</b>	<b>138,273</b>	<b>10,276</b>	<b>6,990</b>	<b>1,600</b>	<b>158,519</b>

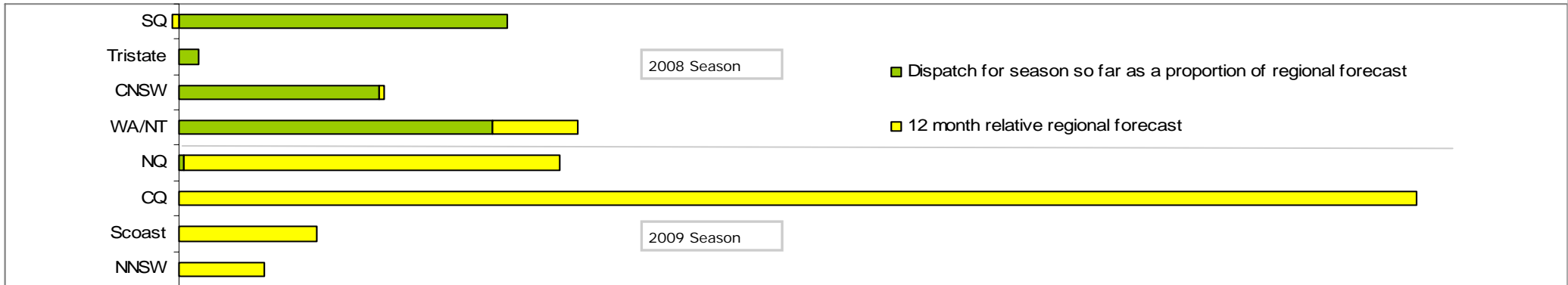
**Dispatch vs weekly forecast for Australian & NZ Avocados - all varieties and all packs (13th September 2008 to 27th February 2009)**



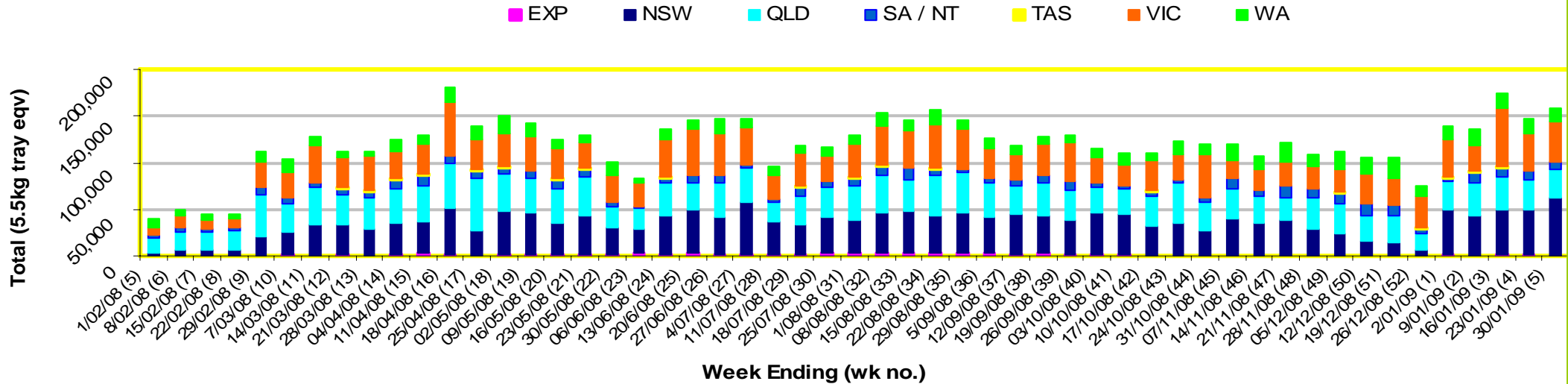
**New Zealand Avocado Exports—Forecast v Import Statistics (5.5kg eqv trays) August 2008-April 2009**

Export Dest'n	Aug	Sep	Oct	Nov	Dec	Jan	Feb	Mar	Apr	Total to date
<b>NZ Export Forecast</b>		7,713	210,274	312,989	345,200					876,176
<b>Australia</b>		7,713	210,274	312,989	345,200					876,176
<b>USA</b>										
<b>Japan</b>		3,920	21,563	37,519	27,534	9,600				100,135
<b>Total</b>		11,633	231,837	350,508	372,734	9,600				976,311

Percentage dispatched by region (Based on seasonal forecast - 2008)



Throughput Australian & NZ avocados by destination State  
Throughput 1st January 2009 to date = 755,605 5.5kg tray eqv



Week 5 contributors - Packhouses

- |                                   |                               |
|-----------------------------------|-------------------------------|
| Advance Packing & Marketing Serv. | Lavers Orchards               |
| NZ Avocado Industry Council       | Lone Gum Avocados             |
| Avocados With Altitude            | Mariners Rest                 |
| AvoLand                           | Merrinee Farms                |
| Avonova                           | Midcoast Avocados             |
| Coastal Avocados                  | Natures Fruit Company         |
| Delroy Orchards                   | One Harvest                   |
| Hilltop Mareeba                   | Sunfresh                      |
| I & A Tolson                      | Tam MT Farm Management        |
| ID & AM Leighton                  | VP & EA Farrell               |
| Kulnura Ambrosia Avocados         | Willow Creek Strawberries P/L |

Week 5 contributors - Wholesalers

- |                                   |                                 |
|-----------------------------------|---------------------------------|
| Barkers (Melbourne)               | Murray Bros (Brisbane)          |
| Costa Exchange Trading (Adelaide) | Sculli & Co Pty Ltd (Melbourne) |
| Costa Exchange Trading (Brisbane) | The La Manna Group (Adelaide)   |
| Dykes Bros (Melbourne)            | The La Manna Group (Brisbane)   |
| Etherington (Perth)               | The La Manna Group (Melbourne)  |
| Kelly's (Melbourne)               | United Fresh (Adelaide)         |

### Sales Report including Direct Sales from Packhouses, Wholesale Sales and Stock on Hand at Wholesale Level

	Trays 5.5kg eqv (incl. Mod6 & P84)				Bulk 10kg Cartons					Pre-Pack Kg					Total (5.5kg eqv)			
	Hass	Shepard	Other	Total	Hass	Shepard	Other	Total	5.5kg eqv	Hass	Shepard	Other	Total	5.5kg eqv	Hass	Shepard	Other	Total
<b>NSW</b>																		
Total supermarket sales																		
Total non supermarket sales																		
Total exports																		
Total sales	29,889			29,889											29,889			29,889
Total stock on hand																		
<b>QLD</b>																		
Total supermarket sales	12,639			12,639	3,289			3,289	5,980	1,210			1,210	220	18,839			18,839
Total non supermarket sales	16,182		142	16,324	233			233	424						16,606		142	16,748
Total exports																		
Total sales	28,821		142	28,963	3,522			3,522	6,404	1,210			1,210	220	35,445		142	35,587
Total stock on hand	20,279		155	20,434	112			112	204	222			222	40	20,523		155	20,678
<b>SA &amp; TAS</b>																		
Total supermarket sales	9,466			9,466						2,586			2,586	470	9,936			9,936
Total non supermarket sales	3,884		135	4,019	476			476	865						4,749		135	4,884
Total exports																		
Total sales	13,350		135	13,485	476			476	865	2,586			2,586	470	14,686		135	14,821
Total stock on hand #	5,651		134	5,785	965			982	1,785	81			81	15	7,420		165	7,585
<b>VIC</b>																		
Total supermarket sales	21,401			21,401											21,401			21,401
Total non supermarket sales	6,123	237	200	6,560	392			392	713						6,836	237	200	7,273
Total exports																		
Total sales	27,525	237	200	27,962	392			392	713						28,237	237	200	28,674
Total stock on hand	30,598	515	224	31,337	1,048			1,048	1,905						32,504	515	224	33,243
<b>WA</b>																		
Total supermarket sales																		
Total non supermarket sales																		
Total exports																		
Total sales	3,123			3,123	745			745	1,355	2,500			2,500	455	4,932			4,932
Total stock on hand #																		
<b>TOTAL</b>																		
Total supermarket sales	73,647			73,647	3,481			3,481	6,329	6,296			6,296	1,145	81,121			81,121
Total non supermarket sales	29,061	237	477	29,775	1,654			1,654	3,007						32,069	237	477	32,783
Total exports																		
Total sales	102,708	237	477	103,422	5,135			5,135	9,336	6,296			6,296	1,145	113,189	237	477	113,903
Total stock on hand	64,093	515	513	65,121	2,465			2,482	4,513	303			303	55	68,630	515	544	69,689

# Full data set not included because not enough Sydney wholesalers contributed data this week

# Full data set not included because not enough WA wholesalers contributed data this week

**Weekly National Sales**

